

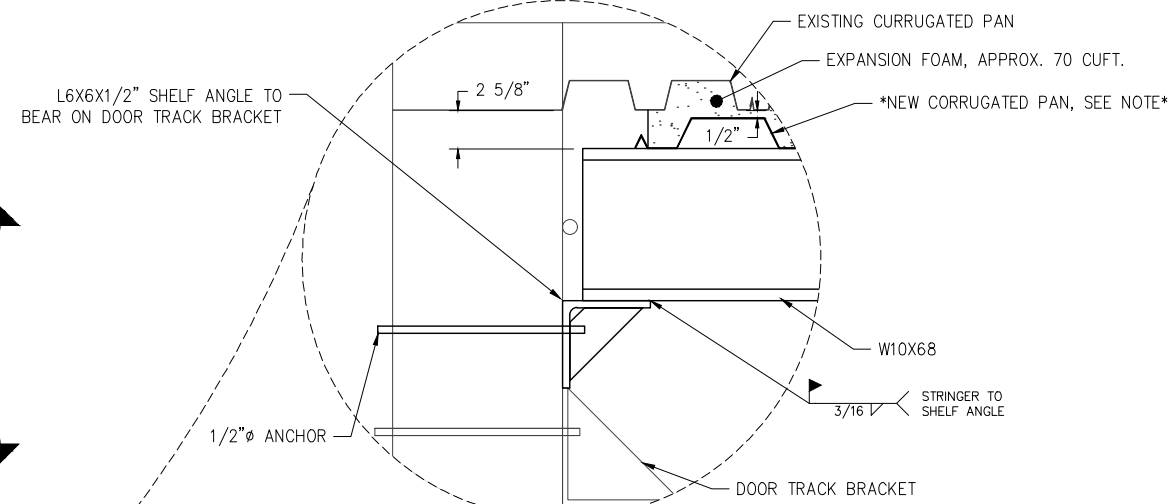
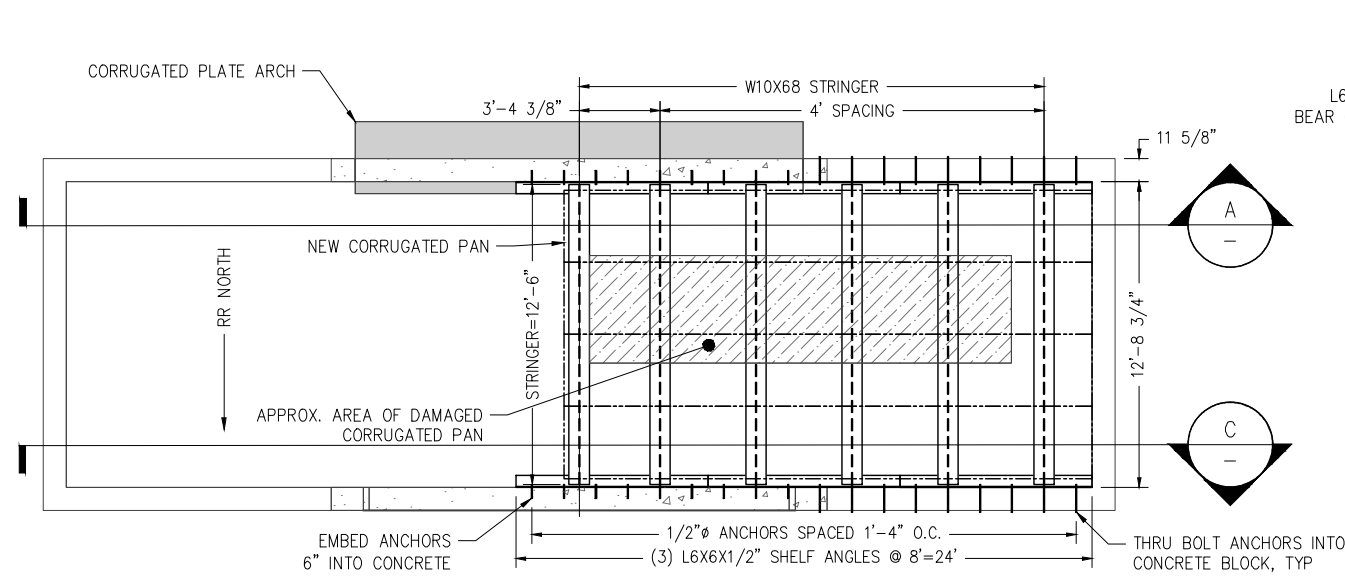
DRAWING LOCATION: P:\ENGINEERING\TUNNELS\MP\_F05\_8 PORTAGE TUNNEL\5. PROJECTS\DOOR 4 SHORING\DOOR 4 PORTAL SHORING.DWG  
 PUBLISHED CTB  
 SCALE AS NOTED  
 DATE 4/29/2024 1:09 PM  
 TIME  
 AS NOTED

SCOPE OF WORK:

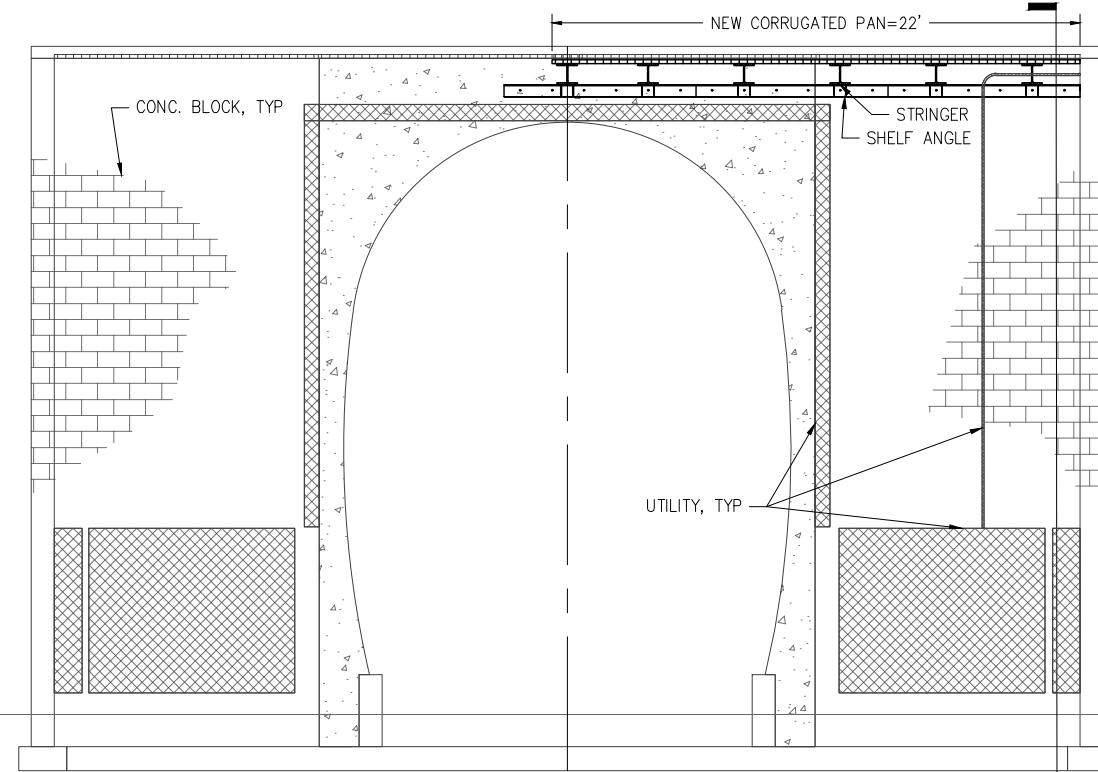
1. RE-LOCATE ANY UTILITIES AS NEEDED.
2. DRILL AND INSTALL ANCHORS INTO CONCRETE/CONCRETE BLOCKS AND INSTALL SHELF ANGLES.
3. INSTALL STRINGERS.
4. INSTALL CORRUGATED PAN AND SEAL EDGES.
5. DRILL HOLES THROUGH ROOF AND PUMP STRUCTURAL EXPANDING FOAM TO FILL VOID BETWEEN STEEL PANS.

NOTE:

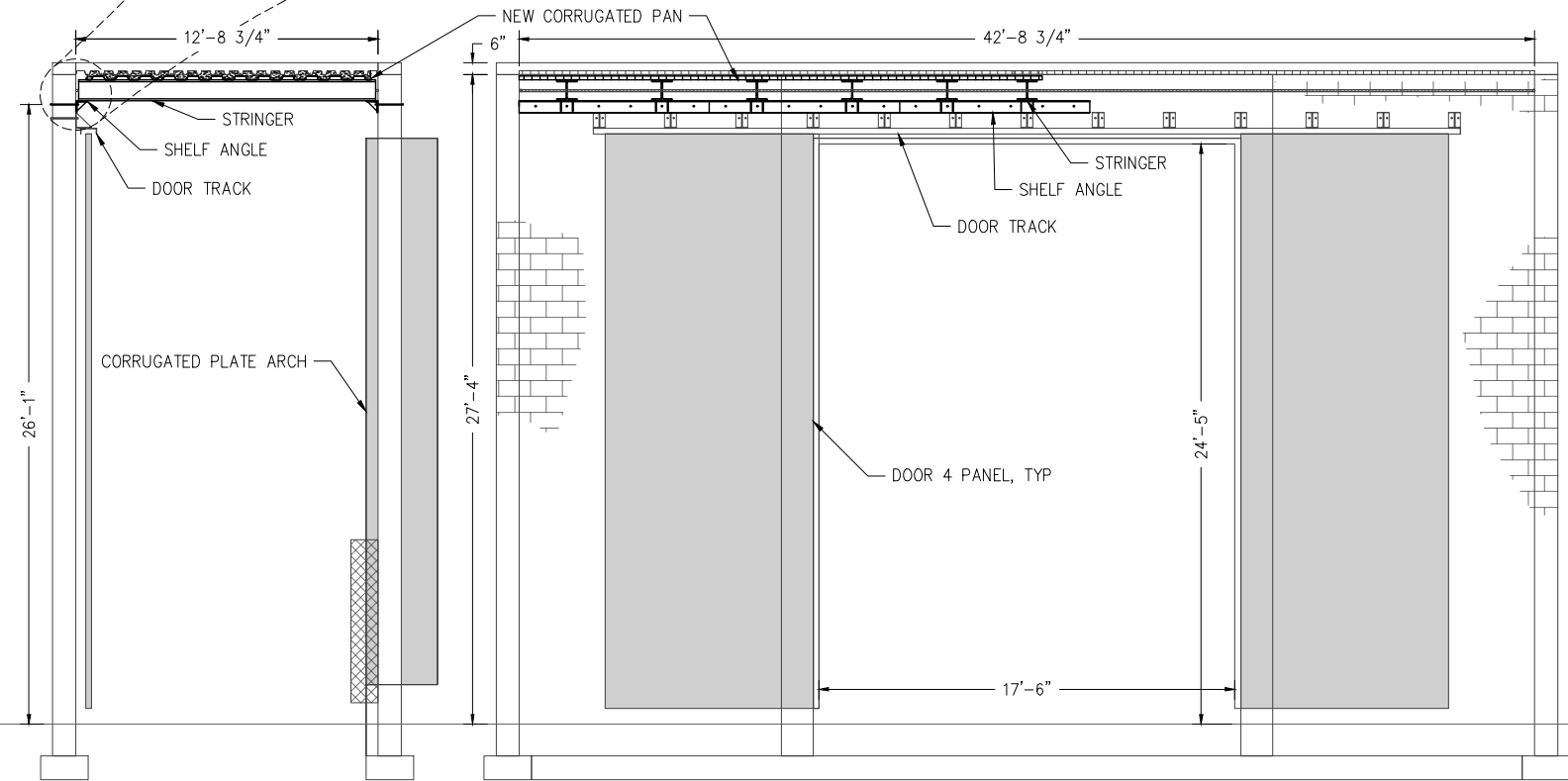
\*USE ARRC SURPLUS 'VERCO W2-36 FORMLOC' FROM SEWARD PASSENGER DOCK PROJECT.\*



TOP VIEW



**A SECTION VIEW**  
SCALE: 1/4" = 1'-0"



**B SECTION VIEW**  
SCALE: 1/4" = 1'-0"

**C SECTION VIEW**  
SCALE: 1/4" = 1'-0"

DESIGNED BY:	DJS
CHECKED BY:	ARRC
DRAFTED BY:	DJS

ALASKA RAILROAD CORPORATION  
 PO BOX 107500, ANCHORAGE, AK 99510-7500  
 327 W SHIP CREEK AVE  
 ANCHORAGE, AK 99501  
 (907) 265-2300

KEY MAP

A/E FIRM

ENGINEERING DEPARTMENT  
 P.O. BOX 107500  
 ANCHORAGE, ALASKA 99510-7500

PROJECT: PORTAGE TUNNEL, DOOR 4

SHEET TITLE: SHORING CONCEPT

AFE NO.	XXX
YEAR	2024
SHEET	1 OF 1