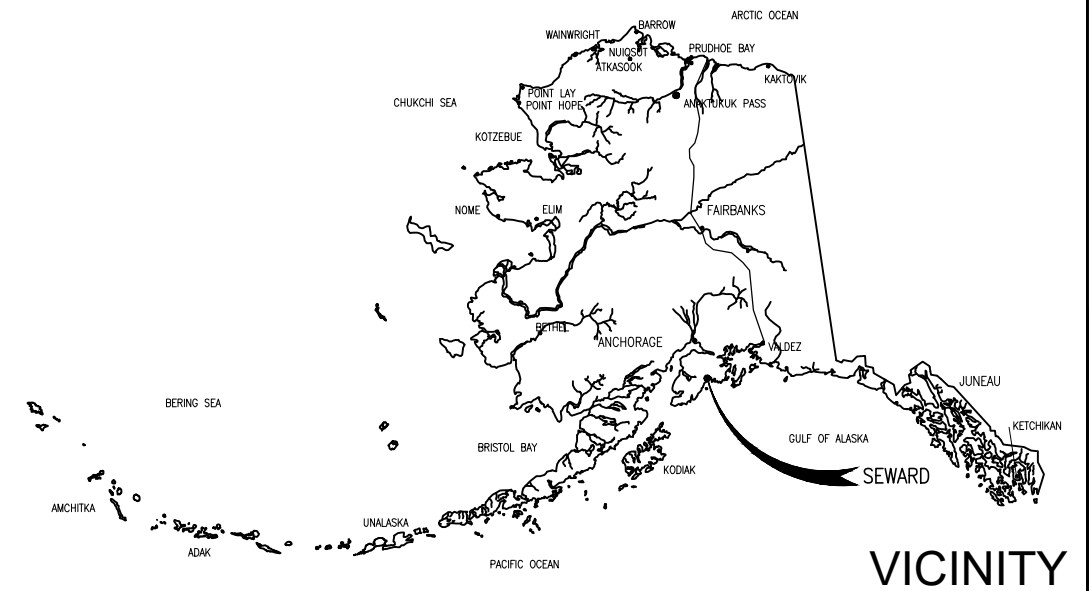


Z:\project\2252.06 ARRC Marine Term Contract SMD Pass Term Tech Support\Civil\Research\ACAD\2252.06 - Cover Sheet.dwg

Plotted 1/27/2022 10:38 AM by Jean Cumlad



VICINITY

Alaska Railroad Seward Passenger Dock SEWARD, ALASKA



PRELIMINARY DRAWINGS

Designed By: 01/27/2022



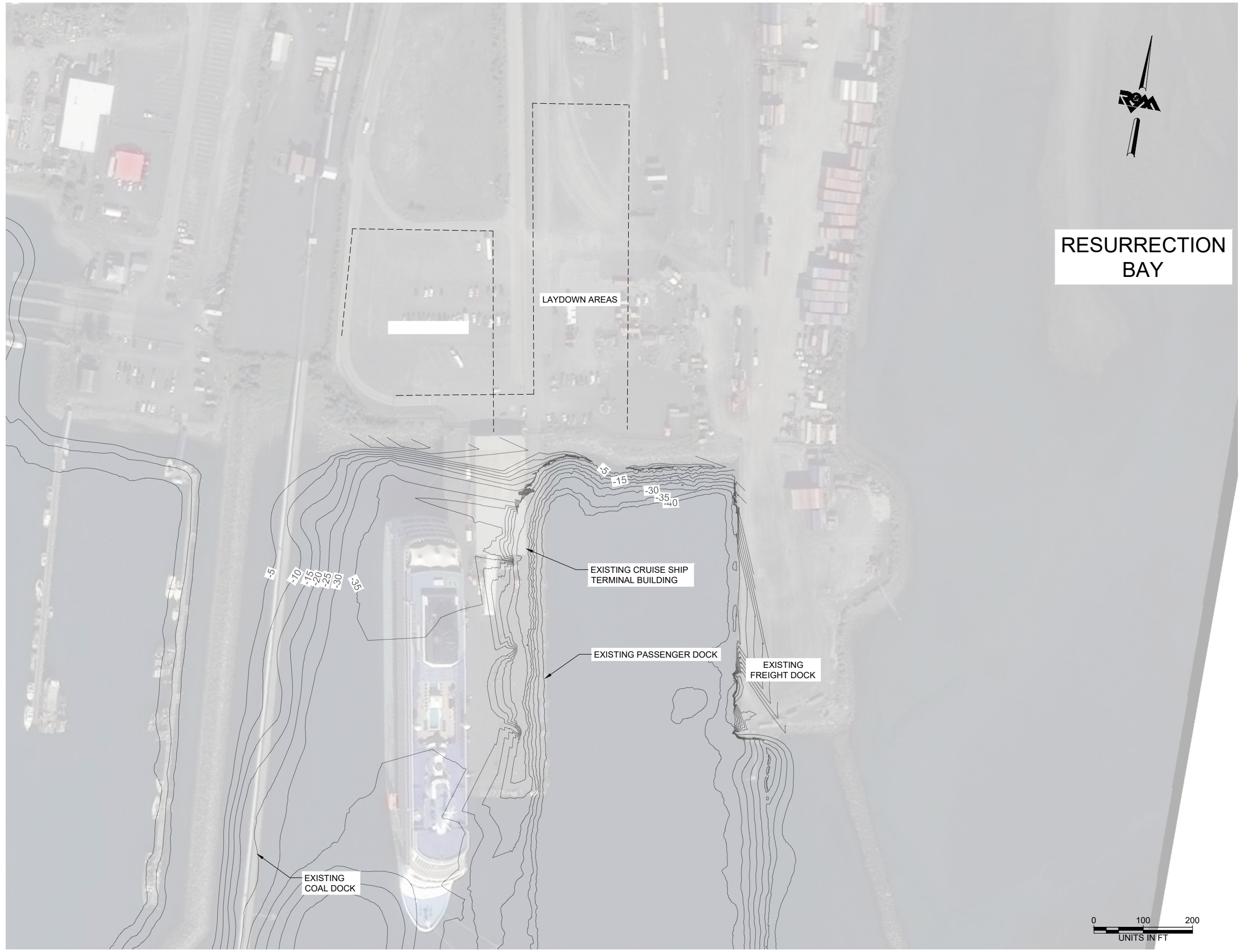
R&M CONSULTANTS, INC.
 9101 Vanguard Drive
 Anchorage, Alaska 99507
 rmconsult.com • email@rmconsult.com
 phone: 907.522.1707 • fax: 907.522.3403
 CORPORATE AUTHORIZATION NUMBER: AECC111

CONCEPT FOR DISCUSSION

SHEET INDEX

- G1 - COVER
- G2 - DESIGN CRITERIA SHEET
- G3 - EXISTING SITE
- G4 - EXISTING PLAN
- G5 - SECTION A-A
- G6 - SECTION B-B
- C1 - CONCEPT SITE
- C2 - CONCEPT SITE
- C3 - CONCEPT SECTION
- C4 - CONCEPT SECTION
- C5 - CONCEPT SECTION

G1.0



RESURRECTION BAY



EXISTING SITE
Scale: 1:100

CONCEPT FOR DISCUSSION

R&M CONSULTANTS, INC.
 9101 Vanguard Drive
 Anchorage, Alaska 99507
 riconsult.com • email@riconsult.com
 phone: 907.522.1707 • fax: 907.522.3403
 CORPORATE AUTHORIZATION NUMBER AECC111

*Alaska Railroad
 Seward Passenger
 Dock*

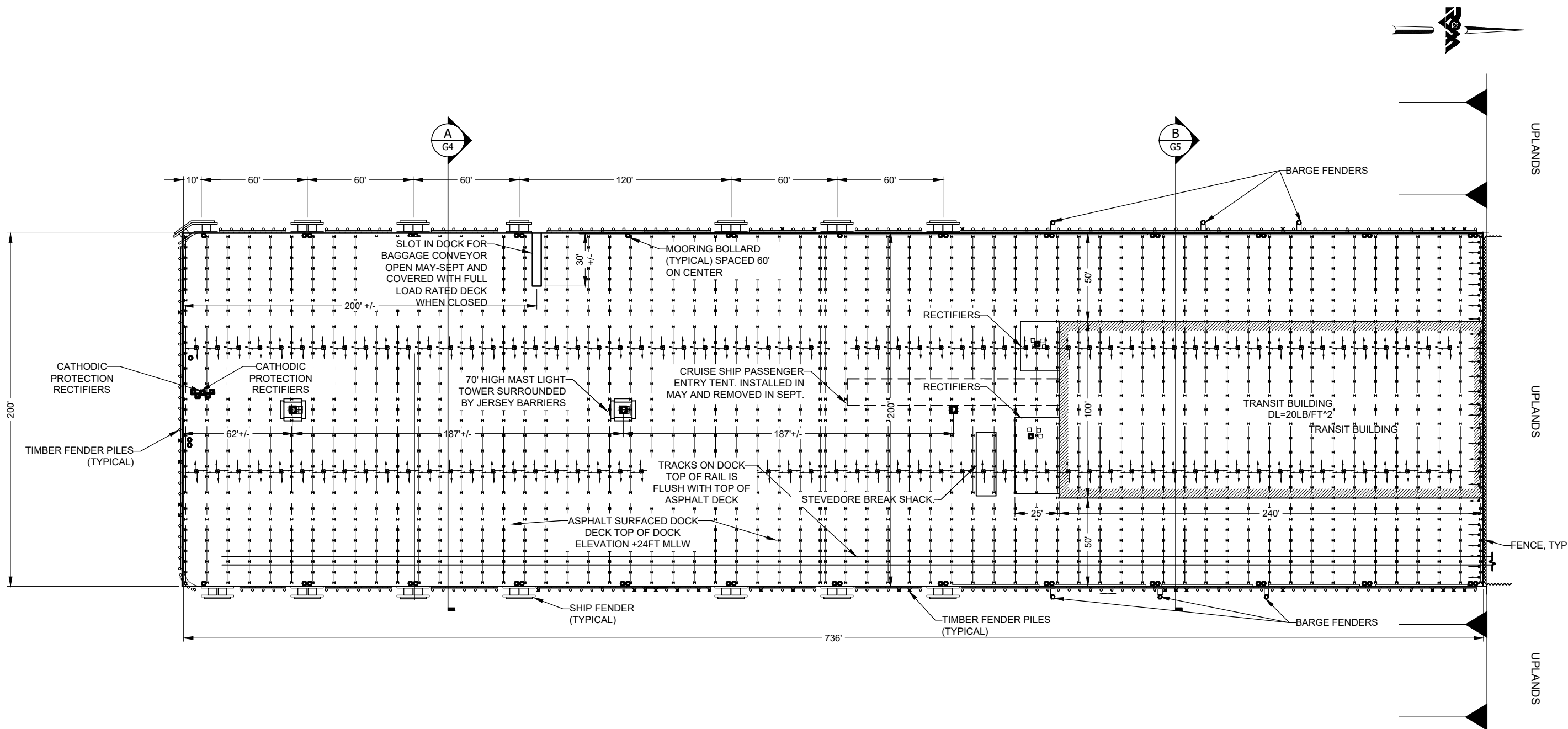
No.	Description	Date

Drawn by: JVC Checked by: JCD
 Date: JANUARY 2022
 Title: CONCEPT DRAWINGS
 Project No: 2252.06
 SHEET TITLE: EXISTING SITE
 SHEET NO:

G3

Z:\project\2252.06 ARRC Marine Term Contract SWD Pass Term Tech Support\Civil\Research\ACAD\2252.06 - Existing Plan And Sections.dwg

Plotted 1/25/2022 9:33 AM by Jean Cumlat



EXISTING PLAN

Scale: 1:30

UPLANDS

UPLANDS

UPLANDS

R&M CONSULTANTS, INC.
 9101 Vanguard Drive
 Anchorage, Alaska 99507
 rmcconsult.com • email@rmconsult.com
 phone: 907.522.1707 • fax: 907.522.3403
 CORPORATE AUTHORIZATION NUMBER AEC0111

*Alaska Railroad
 Seward Passenger
 Dock*



No.	Description	Date

Drawn By: JVC Checked By: JCD

Date: JANUARY 2022
 Title: CONCEPT DRAWINGS
 Project No: 2252.06

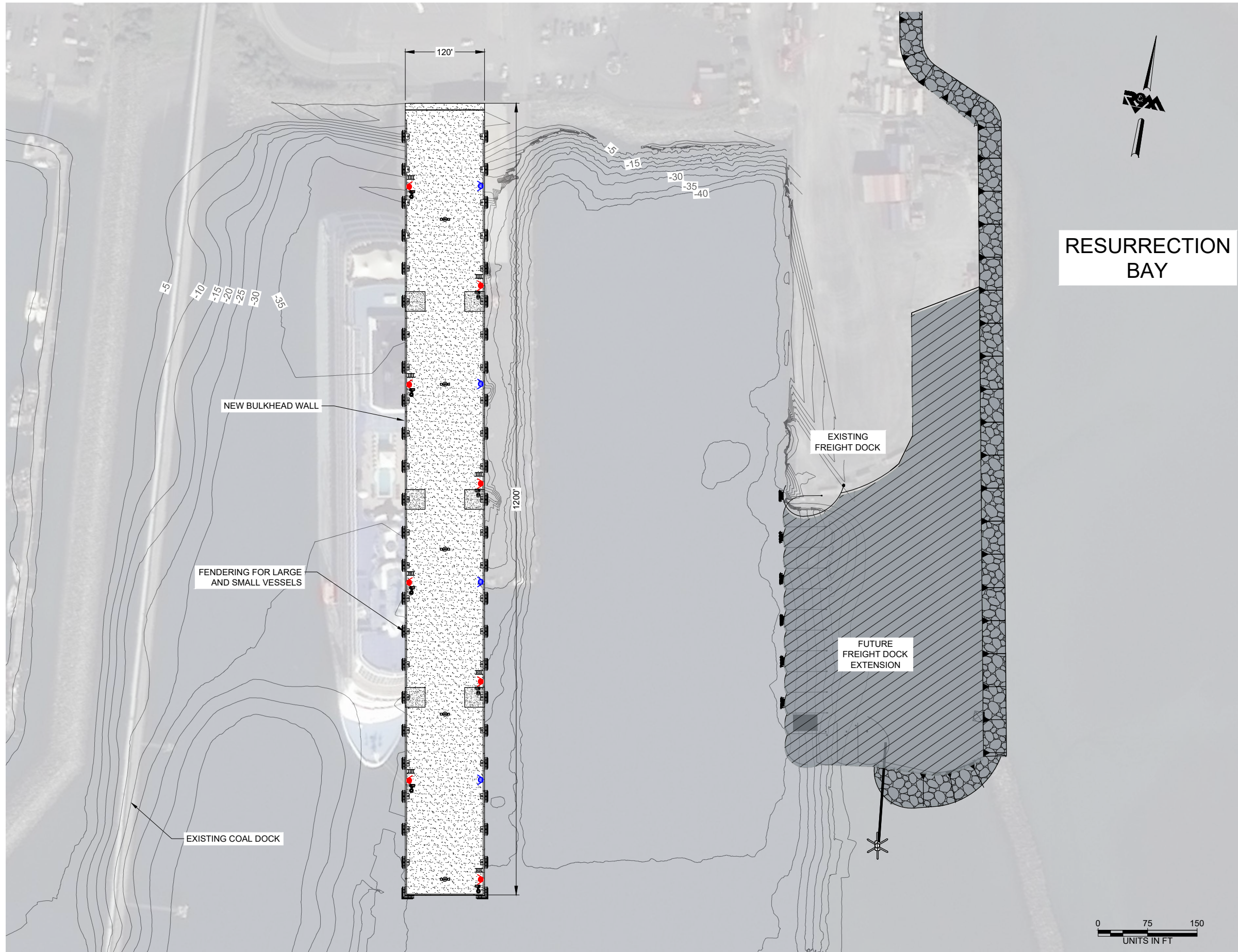
SHEET TITLE:
 EXISTING PLAN

SHEET NO:

CONCEPT FOR DISCUSSION

G4

Z:\project\2252.06 ARRC Marine Term Contract SWD Pass Term Tech Support\Civil\Research\ACAD\2252.06 - Site Plan.dwg
 Plotted 1/27/2022 3:05 PM by Jean Cumlat



CONCEPT SITE

Scale: 1:75

CONCEPT FOR DISCUSSION



*Alaska Railroad
 Seward Passenger
 Dock*



No.	Description	Date

Drawn by: JVC Checked by: JCD

Date: JANUARY 2022

Project: CONCEPT DRAWINGS

Project No: 2252.06

SHEET TITLE:

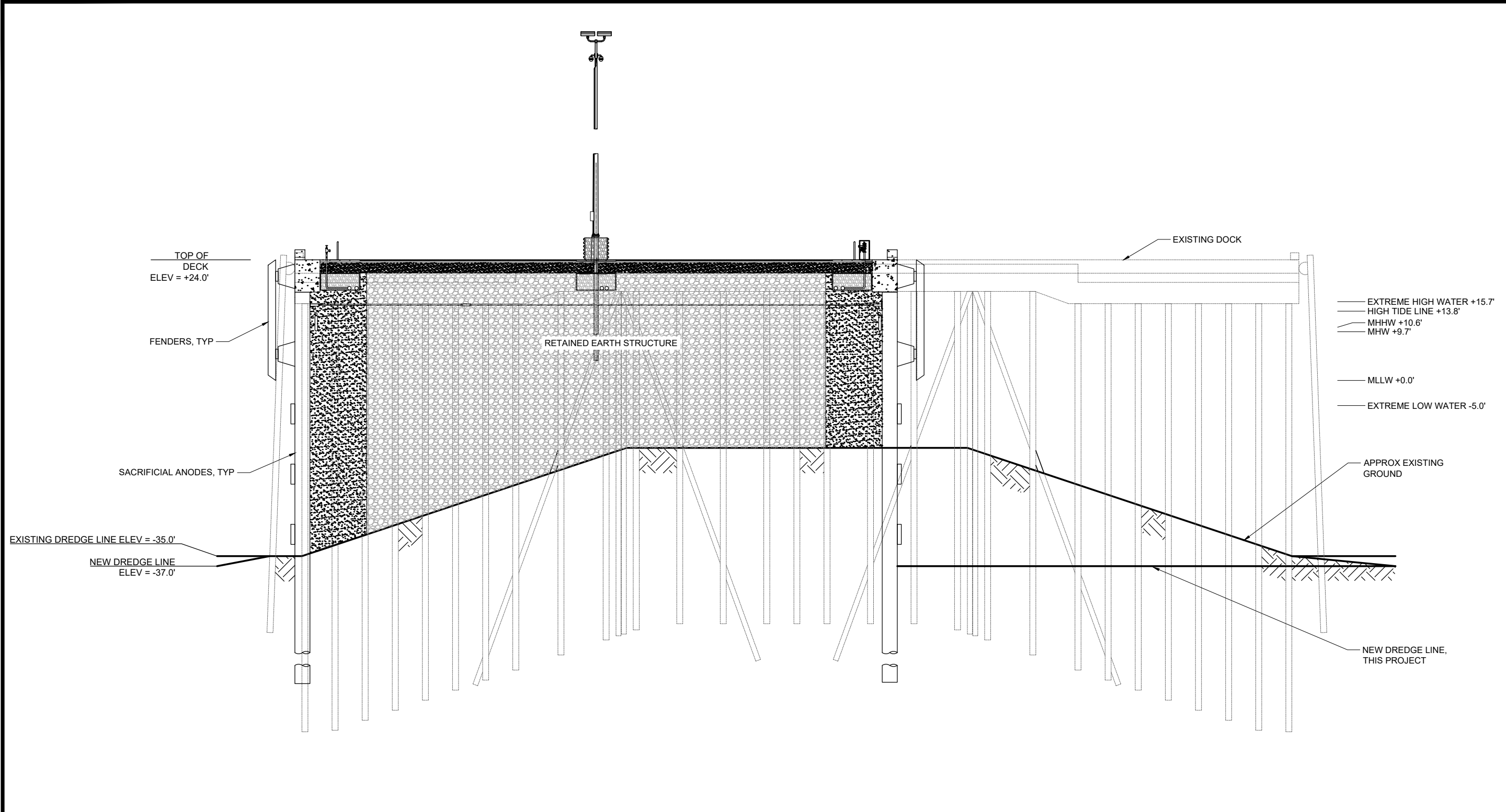
EXISTING SITE

SHEET NO:

C1

Z:\project\2252.06 ARRC Marine Term Contract SWD Pass Term Tech Support\Civil\Research\ACAD\2252.06 - Concept Section.dwg

Plotted 1/26/2022 3:03 PM by Jean Cumlat



CONCEPT SECTION
Scale: 1" = 10'

R&M CONSULTANTS, INC.
9101 Vanguard Drive
Anchorage, Alaska 99507
rmconsult.com • email@rmconsult.com
phone: 907.522.1707 • fax: 907.522.3403
CORPORATE AUTHORIZATION NUMBER AEC111

Alaska Railroad
Seward Passenger
Dock

No.	Description	Date

Drawn by: JVC Checked by: JCD
Date: JANUARY 2022
Project: CONCEPT DRAWINGS
Project No: 2252.06
SHEET TITLE:
CONCEPT SECTION

SHEET NO:
C3

CONCEPT FOR DISCUSSION

