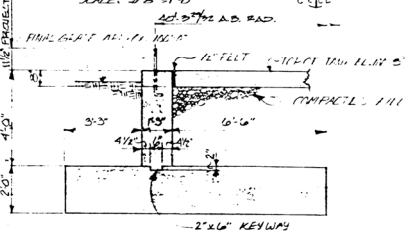


FOUNDATION OF 80' DIA. TANKS
SCALE: 1/4" = 1'-0"

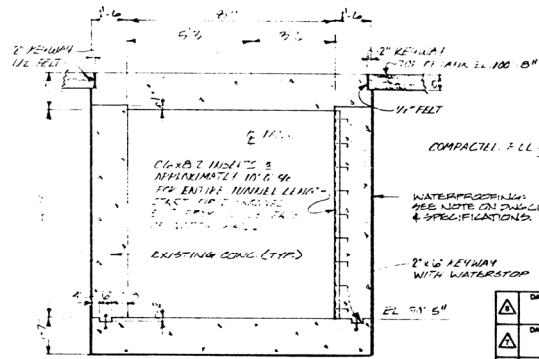
NOTES

1. ONE DOUBLE OF SECTION INDICATOR REFERS TO ONE WITH FRAMING SECTION.
2. THE OTHER DOUBLE REFERS TO SECTION WITH SUPPORTING SECTION.
3. REFER TO DOUBLE LINE FOR GENERAL CONCRETE NOTES.

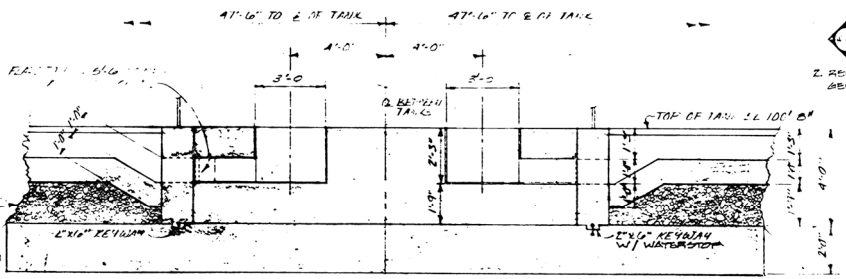
TYPICAL KEYWAY DETAIL
SCALE: 3/4" = 1'-0"



SECTION
SCALE: 3/4" = 1'-0"

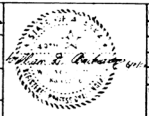


SECTION
SCALE: 3/4" = 1'-0"



SECTION A-A
SCALE: 3/4" = 1'-0"

DATE	DESCRIPTION	DATE	DESCRIPTION
1-1-81	ERC AT TANKS RELOCATED	5-14-81	GENERAL REVISION
5-5-81	GENERAL REVISION	7-19-81	REVISED AERATION PAN OPENING
1-1-82	GENERAL REVISIONS	6-23-81	ORIGINAL ISSUE



DATE 5-14-81
SCALE AS SHOWN
DRAWN BY J.P.
CHECKED BY R.B.A.
APPROVED BY R.B.A.
PRINTED
366.09

PLAN - LARGE STORAGE FOUNDATION FRAMING

TECHNICAL SERVICES DIVISION
STATE OF ALASKA
SEWARD, ALASKA

KIBCOR ENGINEERING COMPANY
Anchorage, Alaska

PLAN 3052 SHEET 5

C2