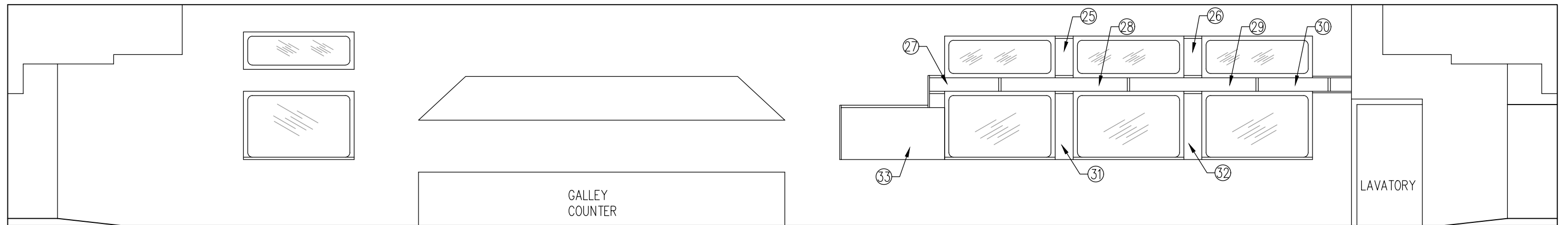


A End

B End

A
1
ARR 352 WALL LAMINATES
RIGHT SIDE INTERIOR ELEVATION



B End


A End

B
1
ARR 352 WALL LAMINATES
LEFT SIDE INTERIOR ELEVATION

WALL LAMINATES					
PN	DIM		PN	DIM	
1	24 1/4 x 23 3/4		12	12 1/4 x 24 1/4	
2	12 1/4 x 24		13	12 1/8 x 24 1/4	
3	12 1/4 x 24		14	14 3/4 x 24 1/4	
4	12 1/4 x 24		15	11 3/8 x 24	
5	14 3/4 x 24		16	11 1/4 x 24 1/4	
6	60 x 6 1/4		17	11 1/8 x 24 1/8	
7	81 x 6 1/4		18	44 3/8 x 8 3/8	
8	81 1/4 x 6 3/8		19	81 x 8 3/8	
9	80 3/4 x 6 1/4		20	81 x 8 5/8	
10	48 7/8 x 6 1/4		21	34 x 8 5/8	
11	12 1/8 x 24 1/4		22	12 x 40 1/4	
			23	11 1/2 x 40 1/4	
			24	11 5/8 x 40 1/4	
			25	11 1/4 x 23 3/4	
			26	11 1/4 x 23 3/4	
			27	44 3/8 x 8 1/4	
			28	81 x 8 1/4	
			29	81 1/8 x 8 1/8	
			30	44 3/4 x 8 1/4	
			31	11 3/4 x 55 1/4	
			32	11 5/8 x 55 1/4	
			33	66 X 33	

NOTES:

1. WALL LAMINATE TO BE FORMICA 920-58 'ALMOND', MATTE FINISH.
2. ALLOW 1/8" GAP BETWEEN LAMINATE AND SOLID SURFACE WALL TRIM AND WINDOW SURROUNDS TO ALLOW FOR EXPANSION AND CONTRACTION.
3. FASTEN LAMINATE TO WALL USING 3M 1357 CONTACT ADHESIVE OR SIMILAR.
4. CAULK PERIMETER OF INSTALLED LAMINATES USING CLEAR SILICONE.

 ALASKA RAILROAD CORPORATION ENGINEERING SERVICES P.O. BOX 107500, ANCHORAGE, ALASKA 99510-7500		
PROJECT : MOTIVE POWER AND EQUIPMENT PASSENGER EQUIPMENT		
TITLE: ARR 352 INTERIOR REFURBISHMENT WALL LAMINATE		
DESIGNED BY: CDL	SCALE : NTS	AFE NO.: 10970 2022 FTA
DRAWN BY: CDL	DATE : NOVEMBER 2022	ACAD FILE:
CHECKED BY: ARRC		DWG NO. 1 OF 1
APPROVED BY: ARRC		