

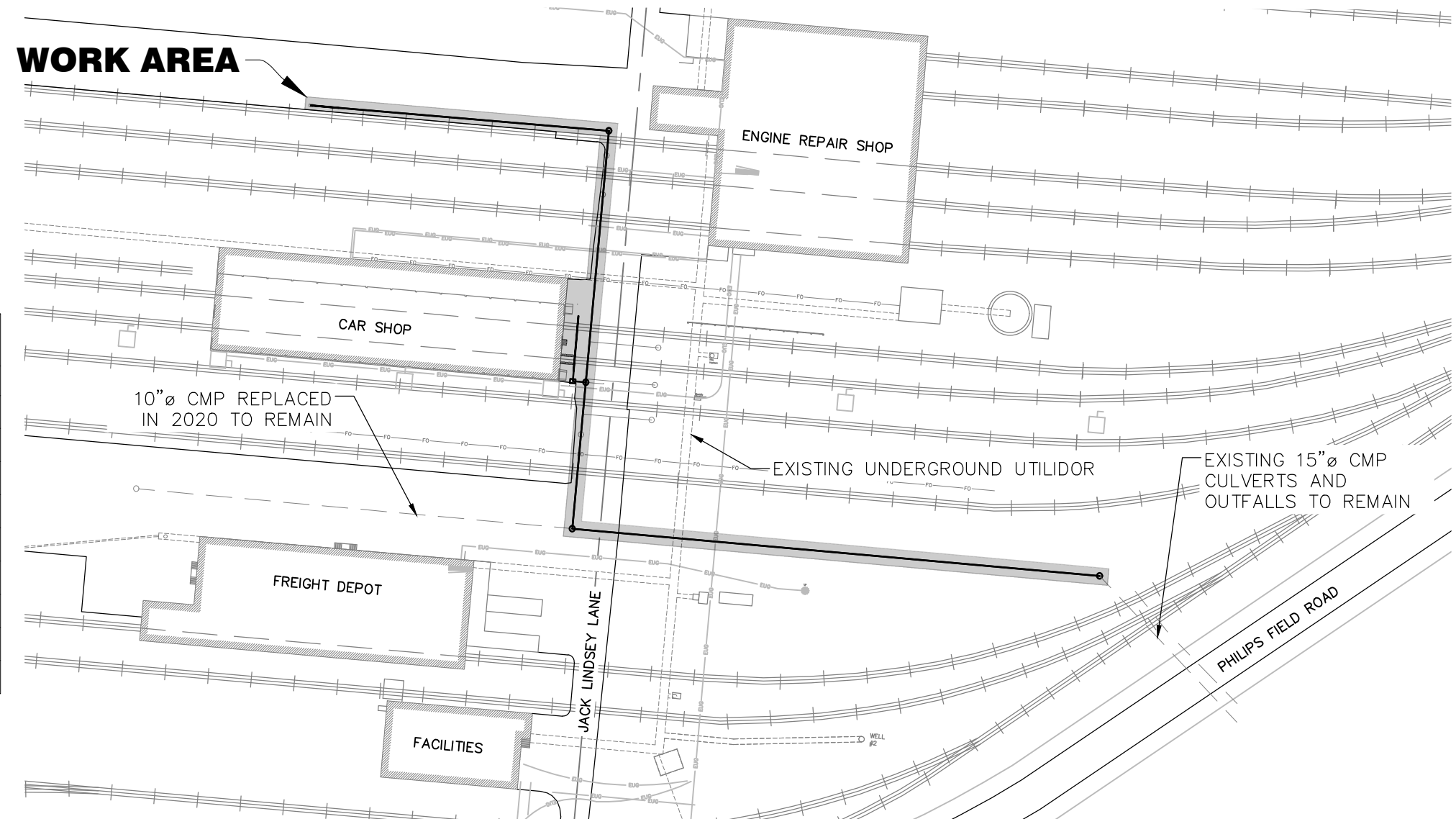


Alaska Railroad Corporation

FAIRBANKS RAILYARD DRAINAGE REHABILITATION

WORK UNDER THIS PROJECT SCOPE INCLUDES INSTALLATION AND REPLACEMENT OF STORM DRAIN PIPE AND STRUCTURES THROUGHOUT THE YARD AREA.

| DRAWING INDEX: | | |
|----------------|----|------------------------------|
| DRAWING NO. | ID | DESCRIPTION |
| 1 | T1 | TITLE SHEET (THIS DRAWING) |
| 2 | P1 | SITE PLAN |
| 3 | P2 | PLAN AND PROFILE SHEET 1 |
| 4 | P3 | PLAN AND PROFILE SHEET 2 |
| 5 | P4 | PLAN AND PROFILE SHEET 3 |
| 6 | G1 | CAR SHOP GRADING PLAN |
| 7 | D1 | EXISTING UTILITY DETAILS |
| 8 | D2 | PROPOSED STORM DRAIN DETAILS |
| 9 | D3 | TRACK SECTION DETAILS |



SAFETY

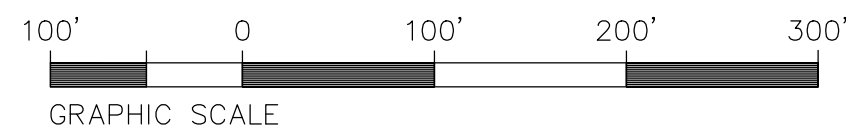
Mandatory Minimum Personal Protective Equipment (PPE):

All contractor personnel shall at all times wear at least:

- Hard hats
- Safety glasses
- Safety toe work boots
- Reflective vests

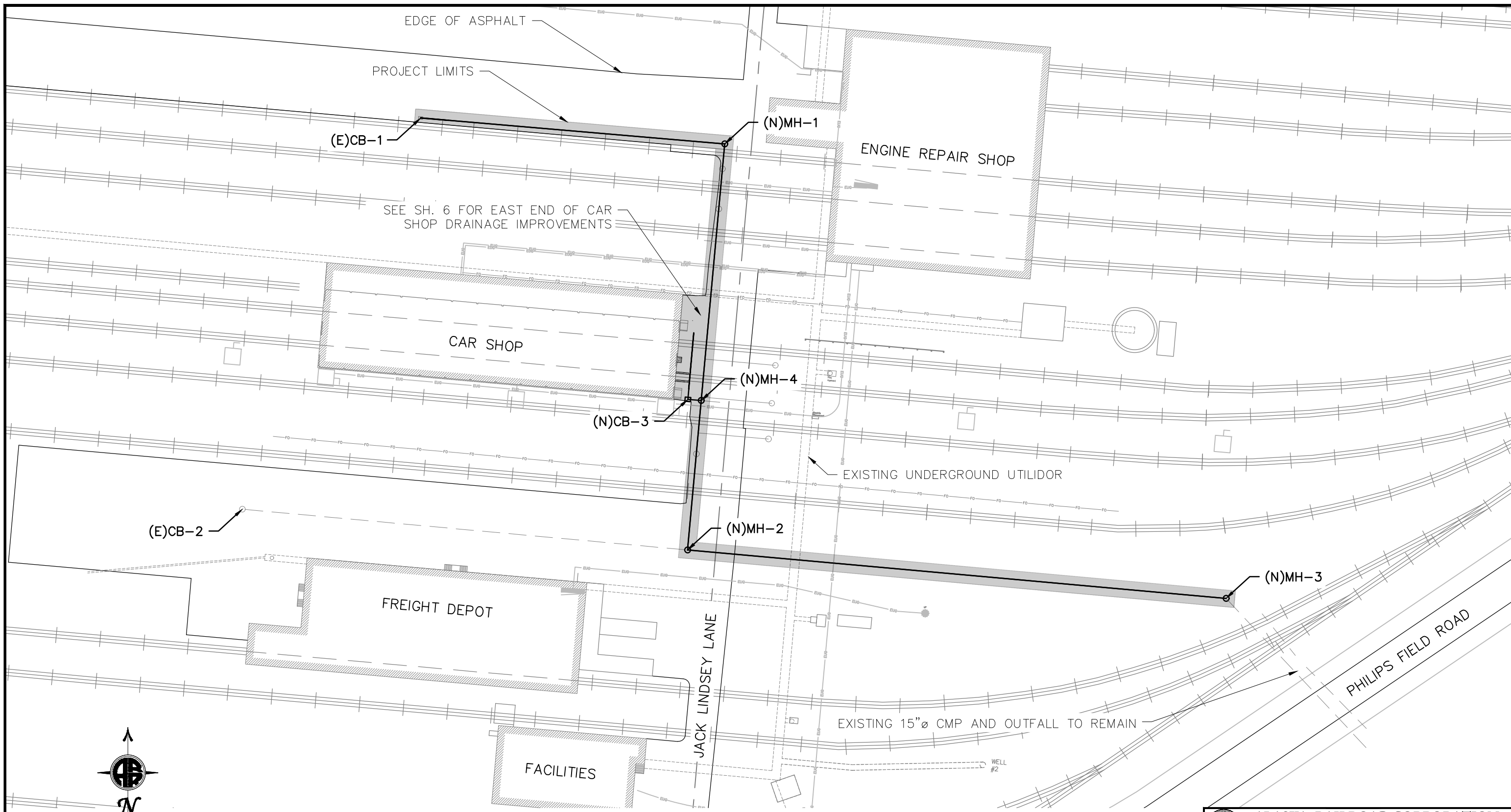
Contractor shall have and comply with a Trenching Plan meeting OSHA requirements at all times.

All workers shall attend a preconstruction safety meeting given by Alaska Railroad.



| REV. | DATE | BY | REVISION |
|------|------|----|----------|
| | | | |
| | | | |
| | | | |

| | | |
|---|------------------|------------------------------|
| ALASKA RAILROAD CORPORATION ENGINEERING SERVICES P.O. BOX 107500, ANCHORAGE, ALASKA 99510-7500 | | |
| PROJECT : FAIRBANKS RAILYARD DRAINAGE REHABILITATION | | |
| TITLE: TITLE SHEET | | |
| DESIGNED BY: ARRC | SCALE : AS NOTED | AFE NO.: 10918 |
| DRAWN BY: BLG | DATE : 1/25/2023 | ACAD FILE: |
| CHECKED BY: BAO | | DWG NO. 1 OF 9 |
| APPROVED BY: ARRC | | |




FAIRBANKS CAR SHOP STORM DRAIN PLAN
NO SCALE

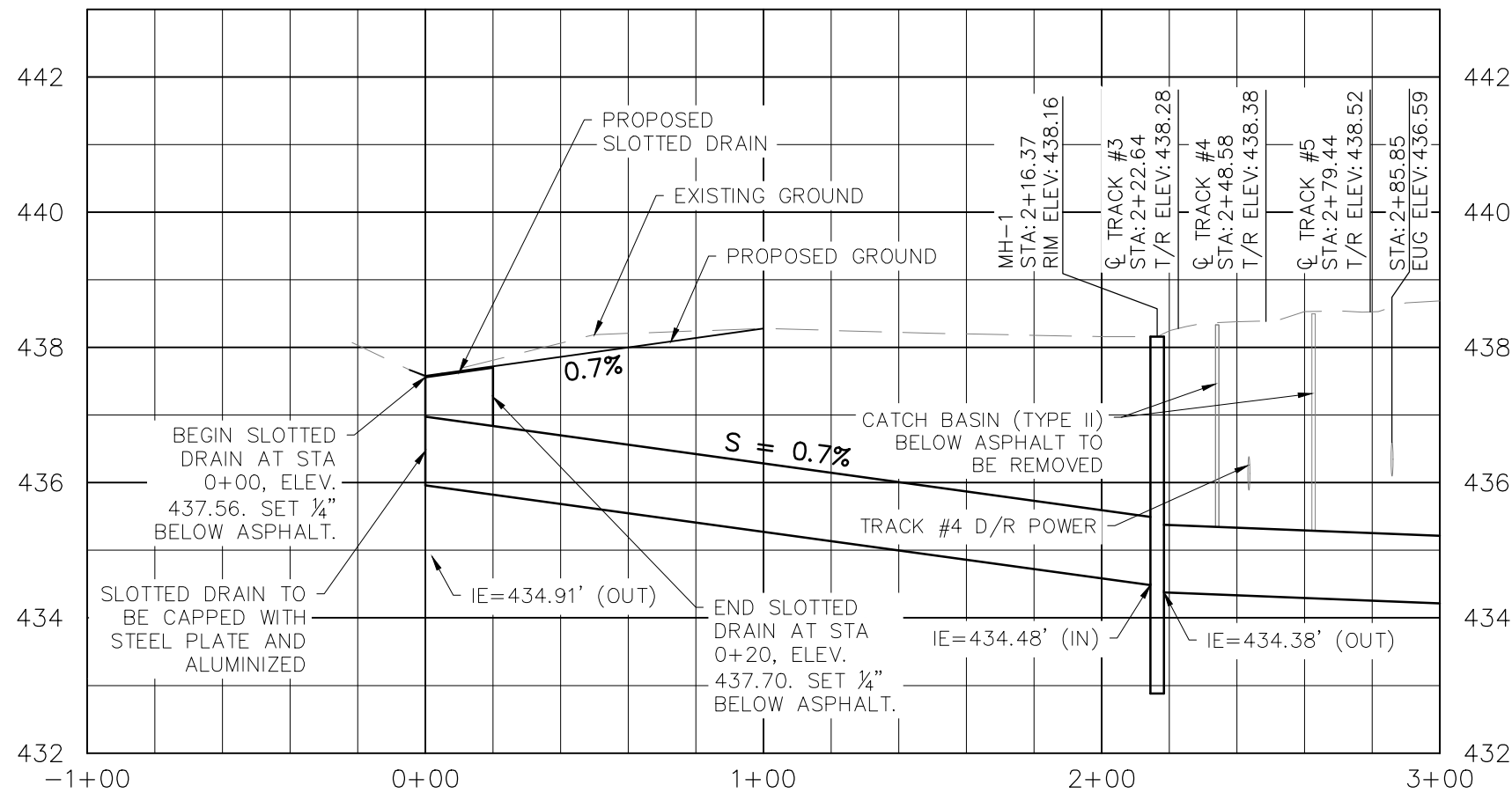
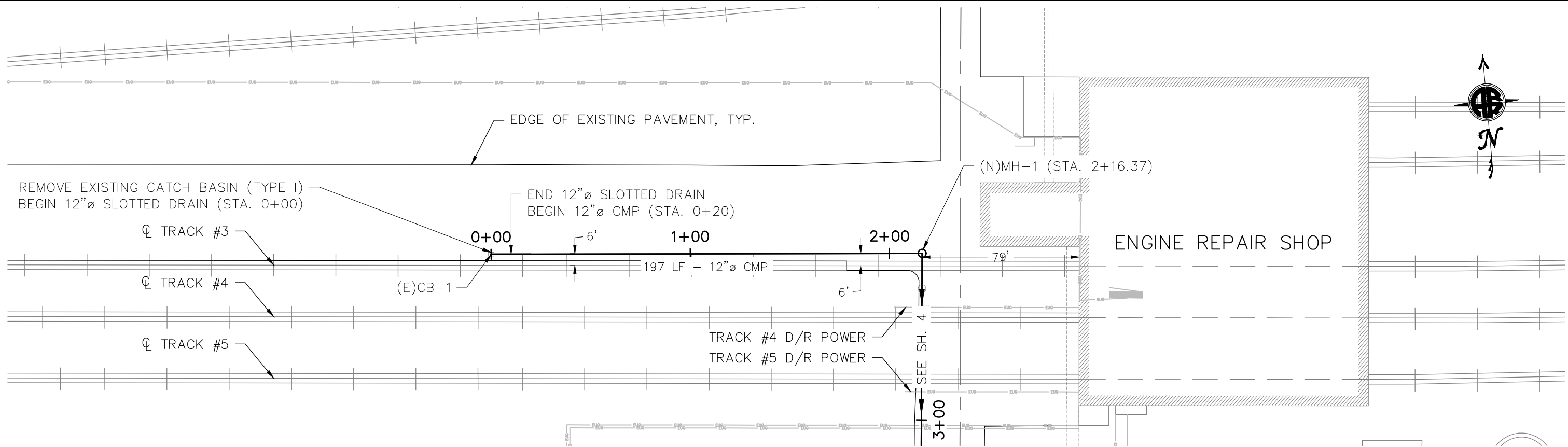


- NOTES:
1. COORDINATE WITH ALASKA RAILROAD CORPORATION FOR LOCATES OF BURIED UTILITIES WITHIN RAILYARD.
 2. MINIMIZE ASPHALT CUTTING TO EXTENT REQUIRED TO EXCAVATE, REPLACE, AND INSTALL PIPES AND STRUCTURES.
 3. MATCH EXISTING ASPHALT GRADES AND GRADE AREAS AROUND INLETS TO DRAIN TO THE INLET.
 4. REMOVE AND REPLACE EXISTING SIGNS AND ABOVE GROUND STRUCTURES AS REQUIRED TO CONDUCT WORK.



| REV. | DATE | BY | REVISION |
|------|------|----|----------|
| | | | |
| | | | |
| | | | |

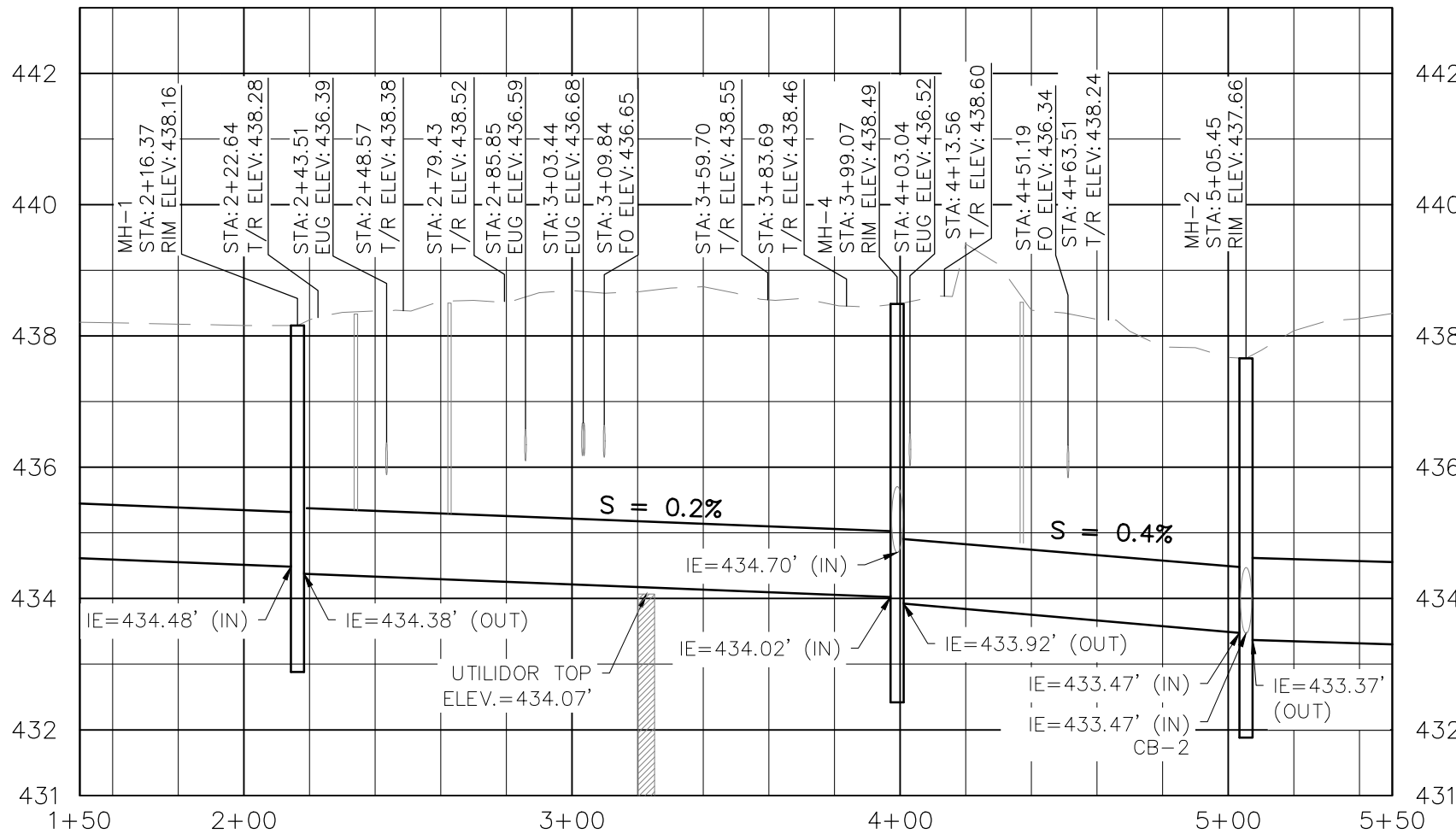
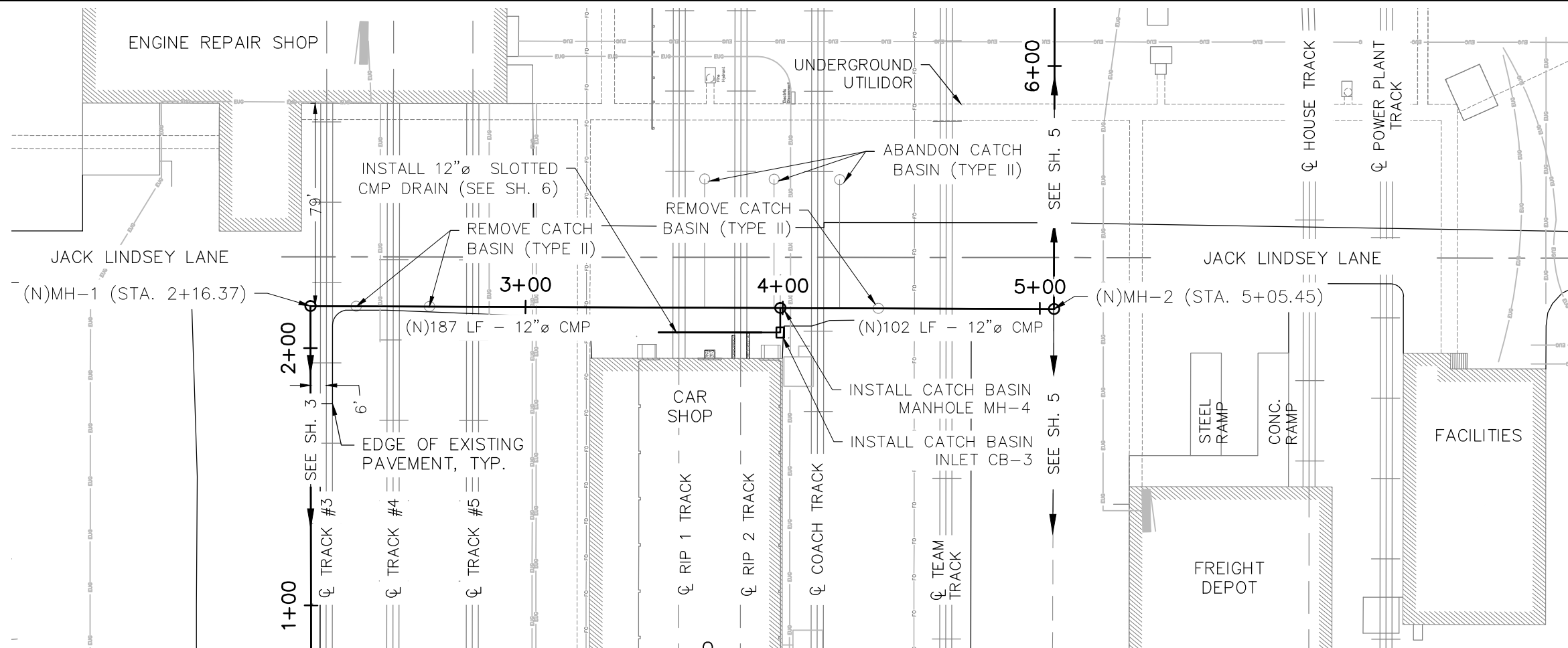
| | | |
|---|------------------|------------------------------|
|  ALASKA RAILROAD CORPORATION ENGINEERING SERVICES P.O. BOX 107500, ANCHORAGE, ALASKA 99510-7500 | | |
| PROJECT : FAIRBANKS RAILYARD DRAINAGE REHABILITATION | | |
| TITLE: SITE PLAN | | |
| DESIGNED BY: ARRC | SCALE : AS NOTED | AFE NO.: 10918 |
| DRAWN BY: BLG | DATE : 1/25/2023 | ACAD FILE: |
| CHECKED BY: BAO | | DWG NO. 2 OF 9 |
| APPROVED BY: ARRC | | |



VERIFY ALL UNDERGROUND UTILITIES PRIOR TO DIGGING
LOCATE CALL CENTER OF ALASKA (811)
- FAIRBANKS1.807.458.6400
- STATEWIDE1.800.478.3121
WHO WILL NOTIFY SUBSCRIBED UTILITIES ONLY. OTHER UTILITIES NEED TO BE CONTACTED INDIVIDUALLY.

| | | |
|---|------------------|------------------------------|
| ALASKA RAILROAD CORPORATION ENGINEERING SERVICES P.O. BOX 107500, ANCHORAGE, ALASKA 99510-7500 | | |
| | | |
| TITLE: PLAN AND PROFILE | | |
| DESIGNED BY: ARRC | SCALE : AS NOTED | AFE NO.: 10918 |
| DRAWN BY: BLG | DATE : 1/25/2023 | ACAD FILE: |
| CHECKED BY: BAO | | DWG NO. 3 OF 9 |
| APPROVED BY: ARRC | | |

| REV. | DATE | BY | REVISION |
|------|------|----|----------|
| | | | |
| | | | |
| | | | |



| REV. | DATE | BY | REVISION |
|------|------|----|----------|
| | | | |
| | | | |
| | | | |

alaska811
 DIGILINE INC.

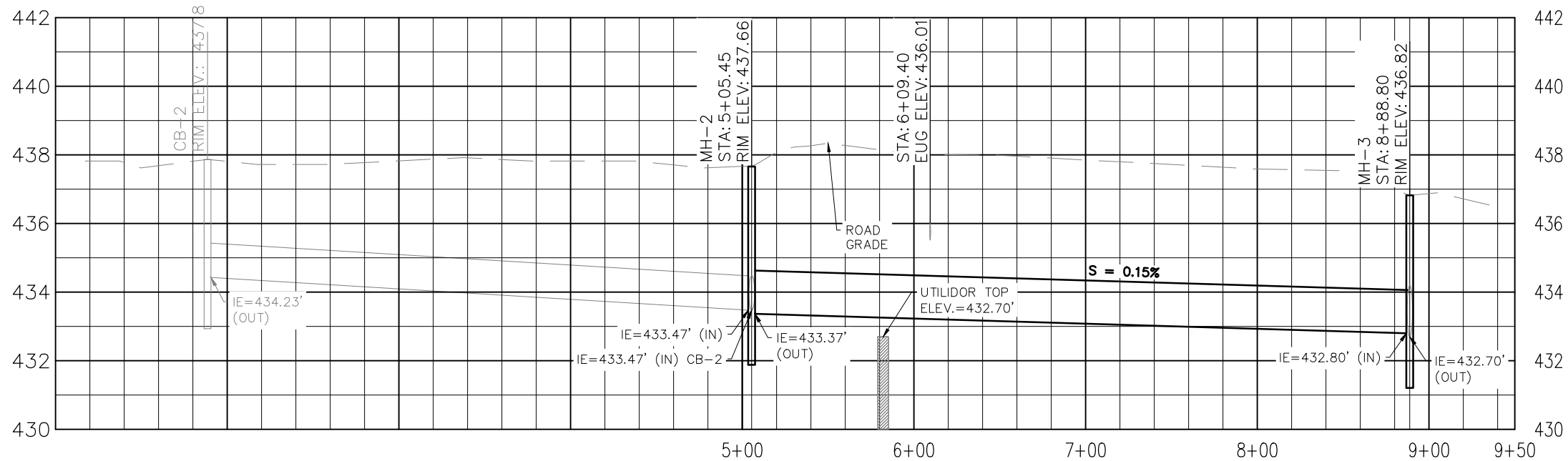
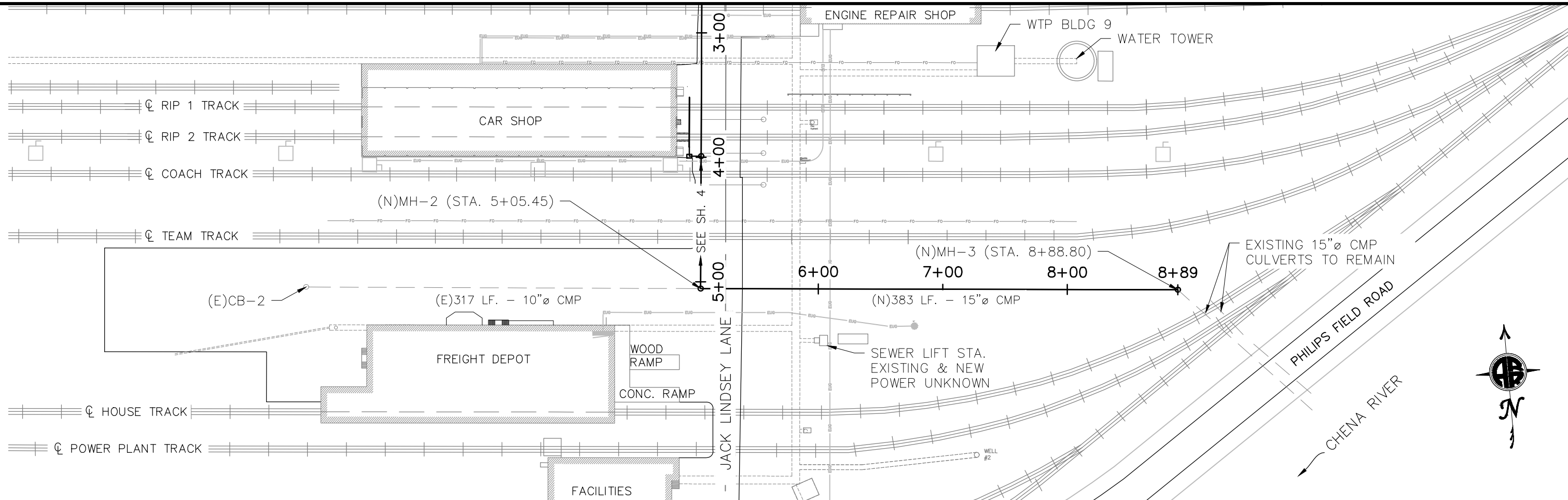
VERIFY ALL UNDERGROUND UTILITIES PRIOR TO DIGGING
 LOCATE CALL CENTER OF ALASKA (811)
 - FAIRBANKS1.800.458.6400
 - STATEWIDE1.800.478.3121
 WHO WILL NOTIFY SUBSIDIARY UTILITIES ONLY. OTHER
 UTILITIES NEED TO BE CONTACTED INDIVIDUALLY.

ALASKA RAILROAD CORPORATION
 ENGINEERING SERVICES
 P.O. BOX 107500, ANCHORAGE, ALASKA 99510-7500

PROJECT : **FAIRBANKS RAILYARD DRAINAGE REHABILITATION**

TITLE: **PLAN AND PROFILE**

| | | |
|-------------------|------------------|------------------------------|
| DESIGNED BY: ARRC | SCALE : AS NOTED | AFE NO.: 10918 |
| DRAWN BY: BLG | DATE : 1/25/2022 | ACAD FILE: |
| CHECKED BY: BAO | | DWG NO. 4 OF 9 |
| APPROVED BY: ARRC | | |



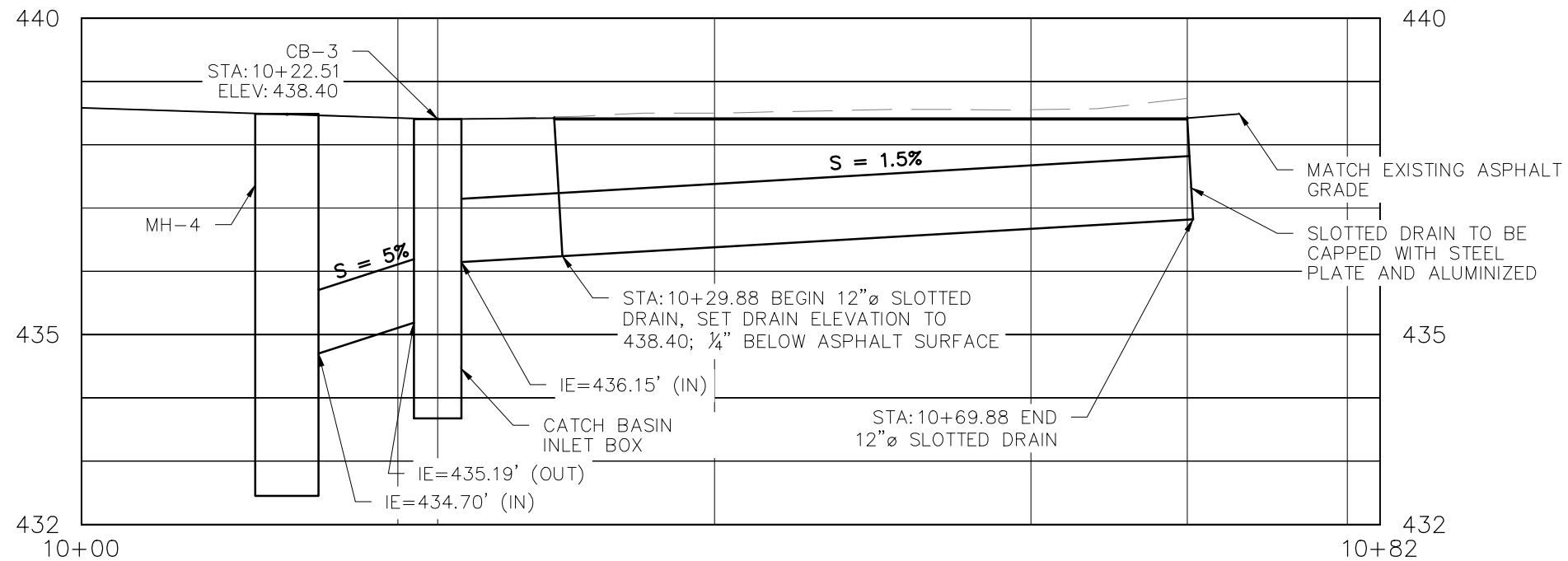
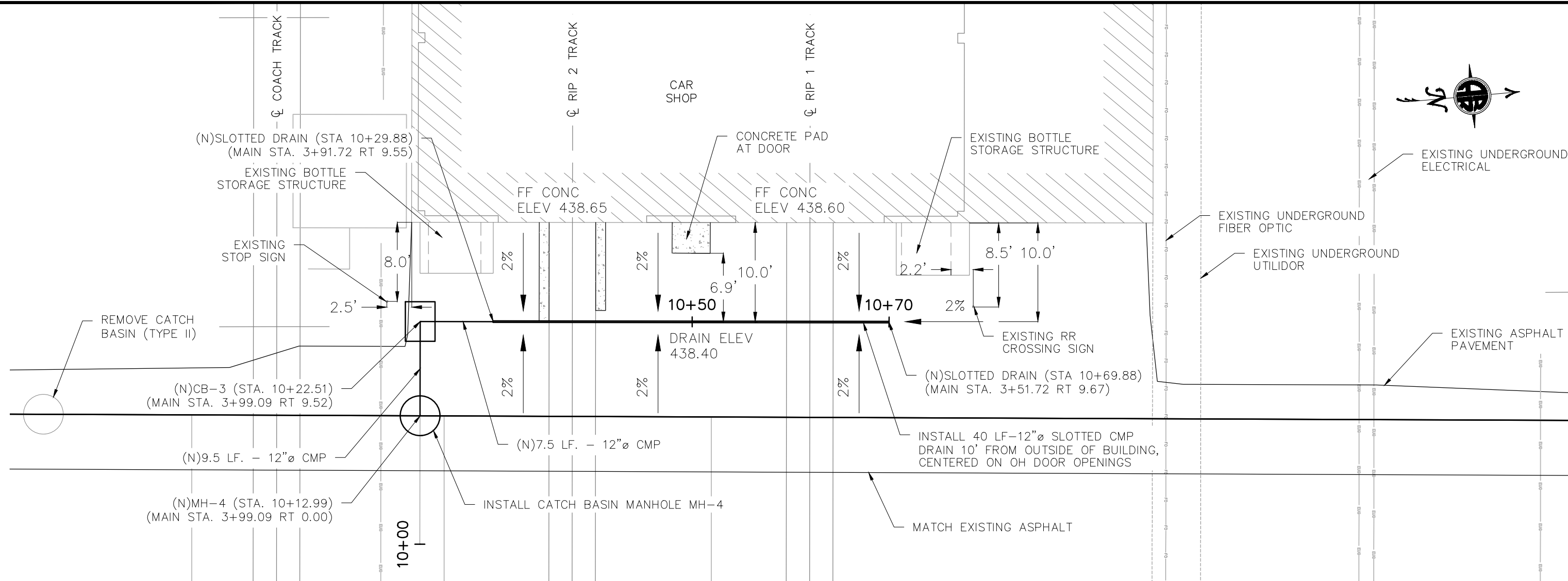
NOTE:
ALL ELEVATION DATA
BASED OFF EXISTING INVERT
OF 15" CMP OUT OF MH-3.



VERIFY ALL UNDERGROUND UTILITIES PRIOR TO DIGGING
LOCATE CALL CENTER OF ALASKA (811)
- FAIRBANKS1.807.458.6400
- STATEWIDE1.800.478.3121
WHO WILL NOTIFY SUBSIDED UTILITIES ONLY. OTHER
UTILITIES NEED TO BE CONTACTED INDIVIDUALLY.

| | | |
|---|------------------|------------------------------|
| ALASKA RAILROAD CORPORATION ENGINEERING SERVICES P.O. BOX 107500, ANCHORAGE, ALASKA 99510-7500 | | |
| PROJECT : FAIRBANKS RAILYARD DRAINAGE REHABILITATION | | |
| TITLE: PLAN AND PROFILE | | |
| DESIGNED BY: ARRC | SCALE : AS NOTED | AFE NO.: 10918 |
| DRAWN BY: BLG | DATE : 1/25/2023 | ACAD FILE: |
| CHECKED BY: BAO | | DWG NO. 5 OF 9 |
| APPROVED BY: ARRC | | |

| REV. | DATE | BY | REVISION |
|------|------|----|----------|
| | | | |
| | | | |
| | | | |

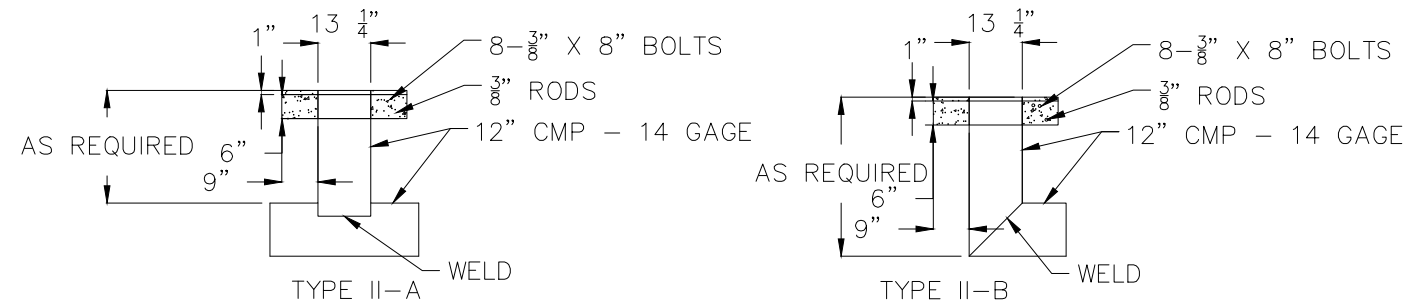


| REV. | DATE | BY | REVISION |
|------|------|----|----------|
| | | | |
| | | | |
| | | | |

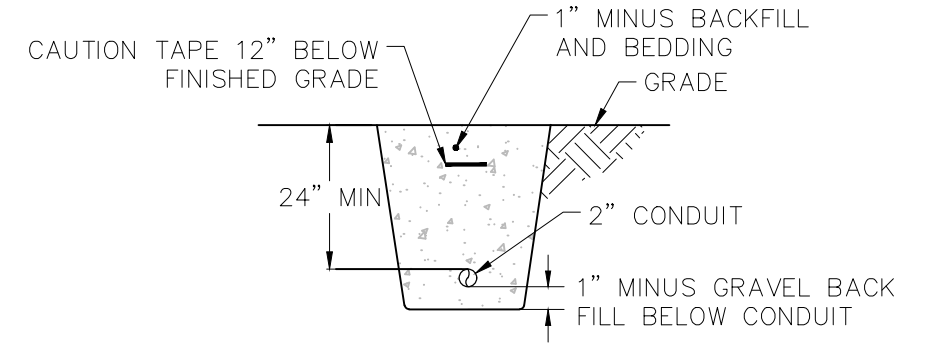
alaska811
DIGILINE INC.

VERIFY ALL UNDERGROUND UTILITIES PRIOR TO DIGGING
LOCATE CALL CENTER OF ALASKA (811)
- FAIRBANKS1.807.458.6400
- STATEWIDE1.800.478.3121
WHO WILL NOTIFY SUBSCRIBED UTILITIES ONLY. OTHER UTILITIES NEED TO BE CONTACTED INDIVIDUALLY.

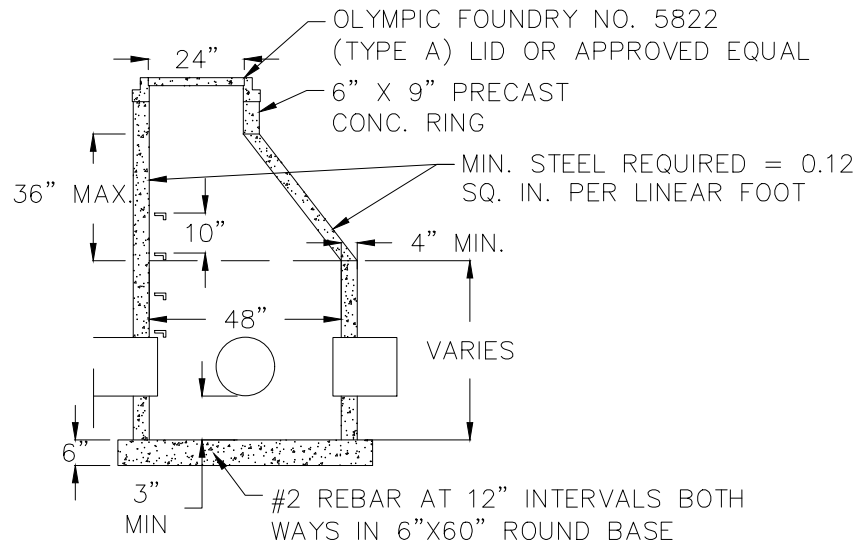
| | | |
|---|-------------------------|---------------------------|
| ALASKA RAILROAD CORPORATION ENGINEERING SERVICES P.O. BOX 107500, ANCHORAGE, ALASKA 99510-7500 | | |
| PROJECT : FAIRBANKS RAILYARD DRAINAGE REHABILITATION | | |
| TITLE: CAR SHOP REGRADING SLOTTED DRAIN PLAN AND PROFILE | | |
| DESIGNED BY: ARRC | SCALE : AS NOTED | AFE NO.: 10918 |
| DRAWN BY: BLG | DATE : 1/25/2023 | ACAD FILE: DWG NO. |
| CHECKED BY: BAO | | 6 OF 9 |
| APPROVED BY: ARRC | | |



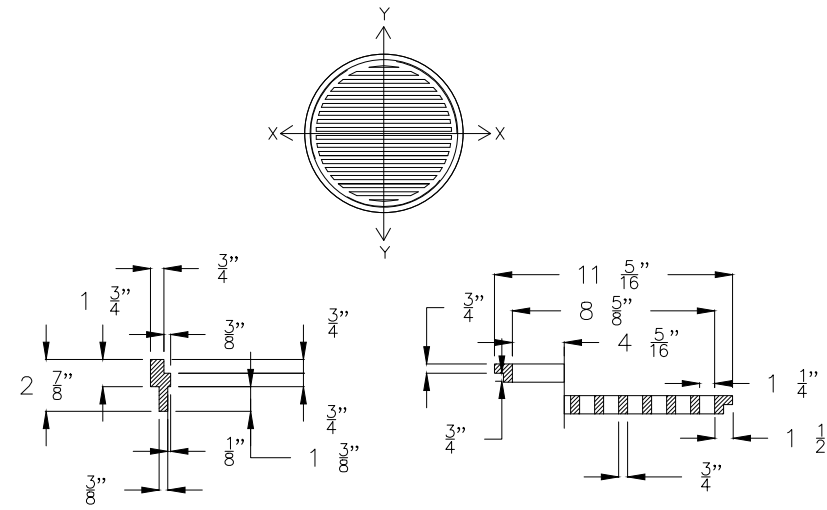
EXISTING CMP CATCH BASINS, TYPE II
NO SCALE
FOR REFERENCE ONLY



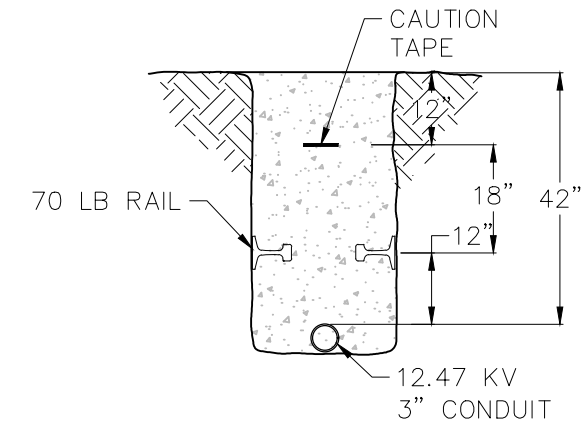
UNDERGROUND ELECTRICAL THROUGH YARD FOR REFERENCE ONLY



EXISTING PRECAST CATCH BASIN MANHOLE
NO SCALE
FOR REFERENCE ONLY

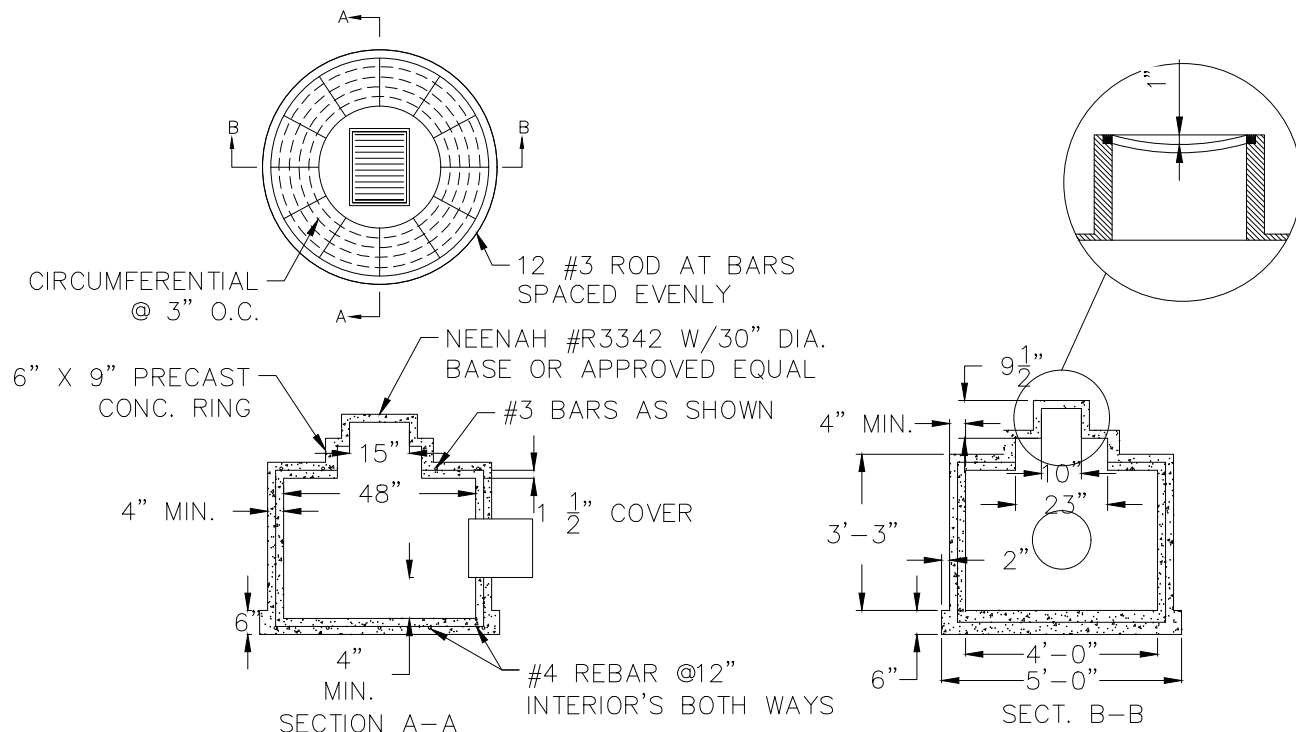


EXISTING TYPE II CATCH BASIN FRAME AND GRATE
NO SCALE
FOR REFERENCE ONLY



UNDERGROUND ELECTRICAL THROUGH YARD FOR REFERENCE ONLY

EUG STA. 6+09.40



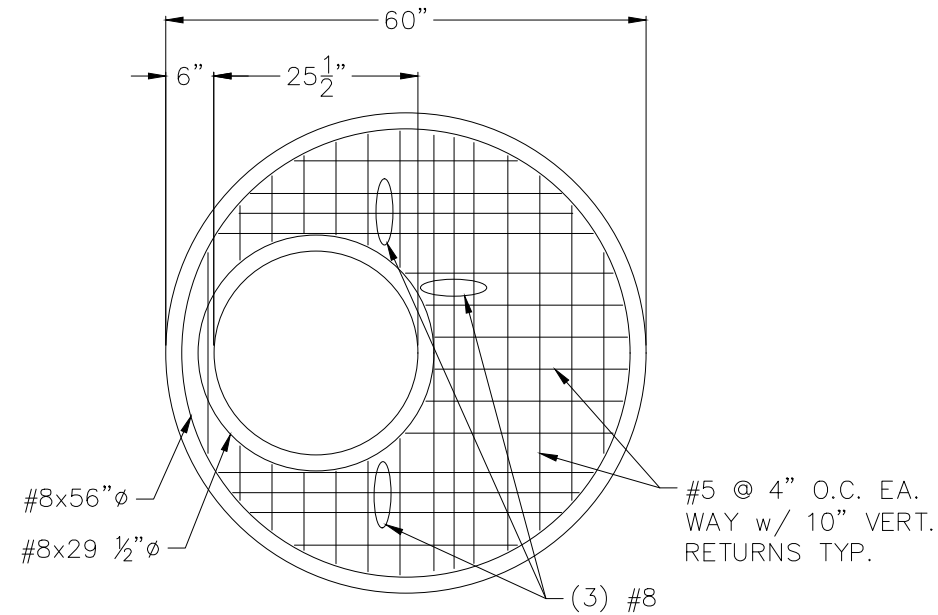
EXISTING CATCH BASIN, TYPE I
NO SCALE
FOR REFERENCE ONLY



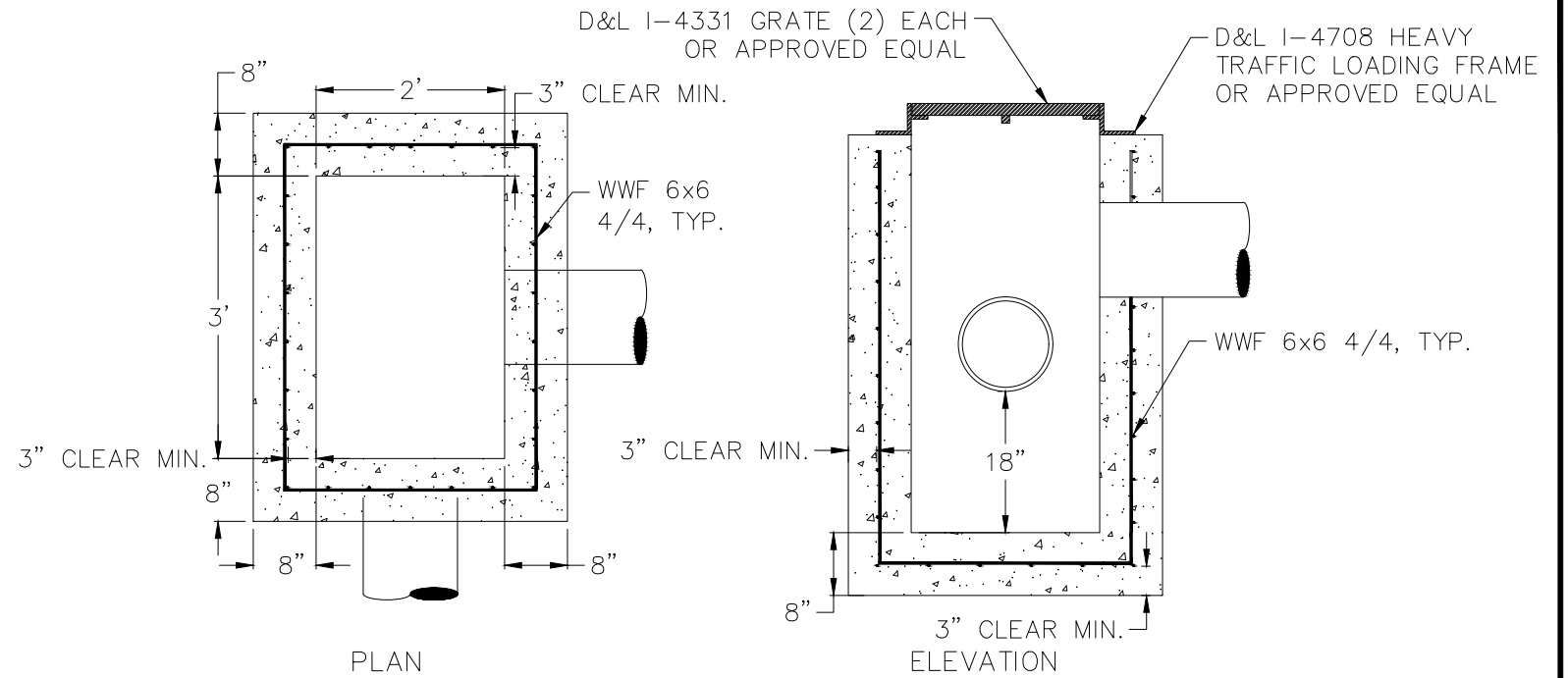
VERIFY ALL UNDERGROUND UTILITIES PRIOR TO DIGGING
LOCATE CALL CENTER OF ALASKA (811)
- FAIRBANKS1.807.458.6400
- STATEWIDE1.800.478.3121
WHO WILL NOTIFY SUBSCRIBED UTILITIES ONLY. OTHER UTILITIES NEED TO BE CONTACTED INDIVIDUALLY.

| | | |
|---|------------------|------------------------------|
| ALASKA RAILROAD CORPORATION ENGINEERING SERVICES P.O. BOX 107500, ANCHORAGE, ALASKA 99510-7500 | | |
| PROJECT : FAIRBANKS RAILYARD DRAINAGE REHABILITATION | | |
| TITLE: EXISTING UTILITY DETAILS | | |
| DESIGNED BY: ARRC | SCALE : AS NOTED | AFE NO.: 10918 |
| DRAWN BY: BLG | DATE : 1/25/2023 | ACAD FILE: |
| CHECKED BY: BAO | | DWG NO. 7 OF 9 |
| APPROVED BY: ARRC | | |

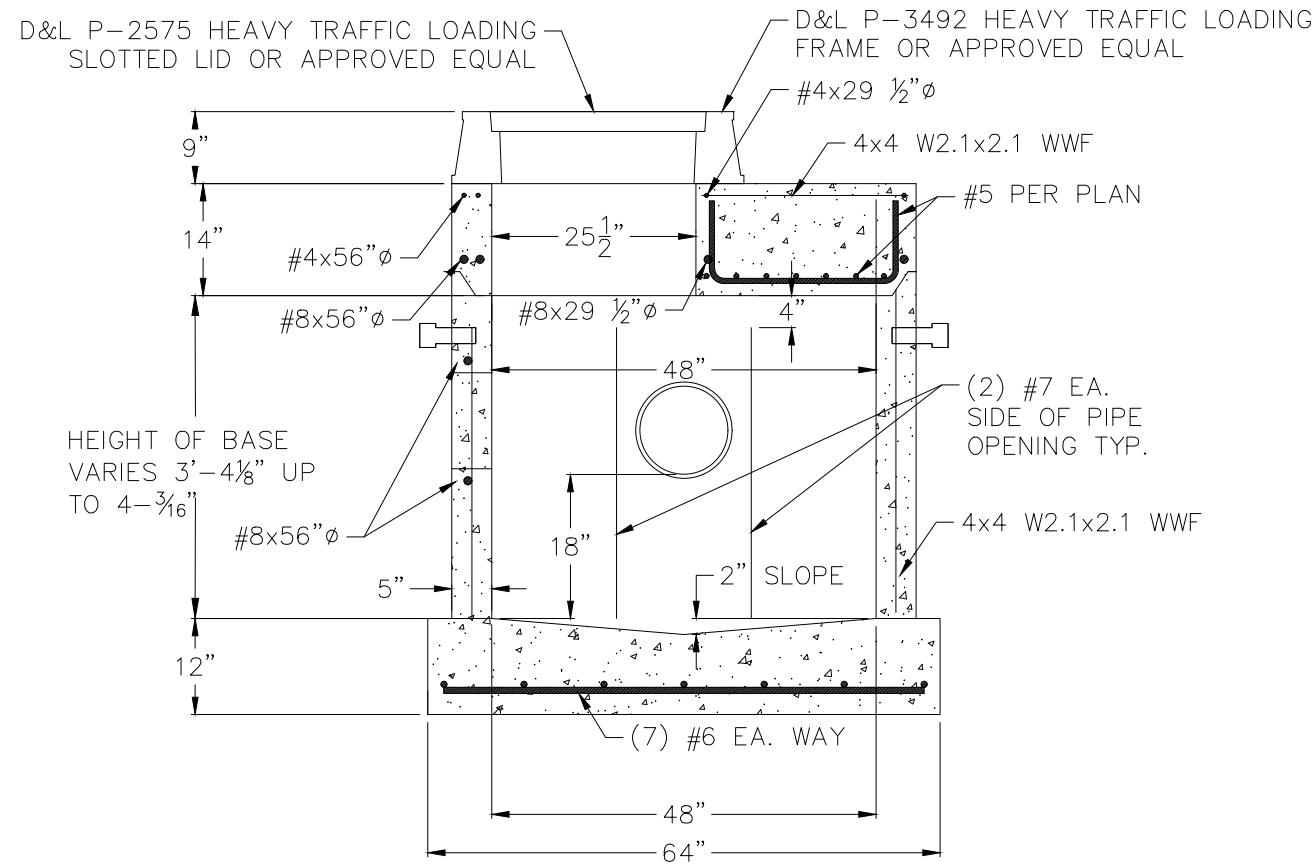
| REV. | DATE | BY | REVISION |
|------|------|----|----------|
| | | | |
| | | | |
| | | | |



PROPOSED FLAT MANHOLE LID
NO SCALE



PROPOSED PRECAST CATCH BASIN INLET,
TYPE A
NO SCALE

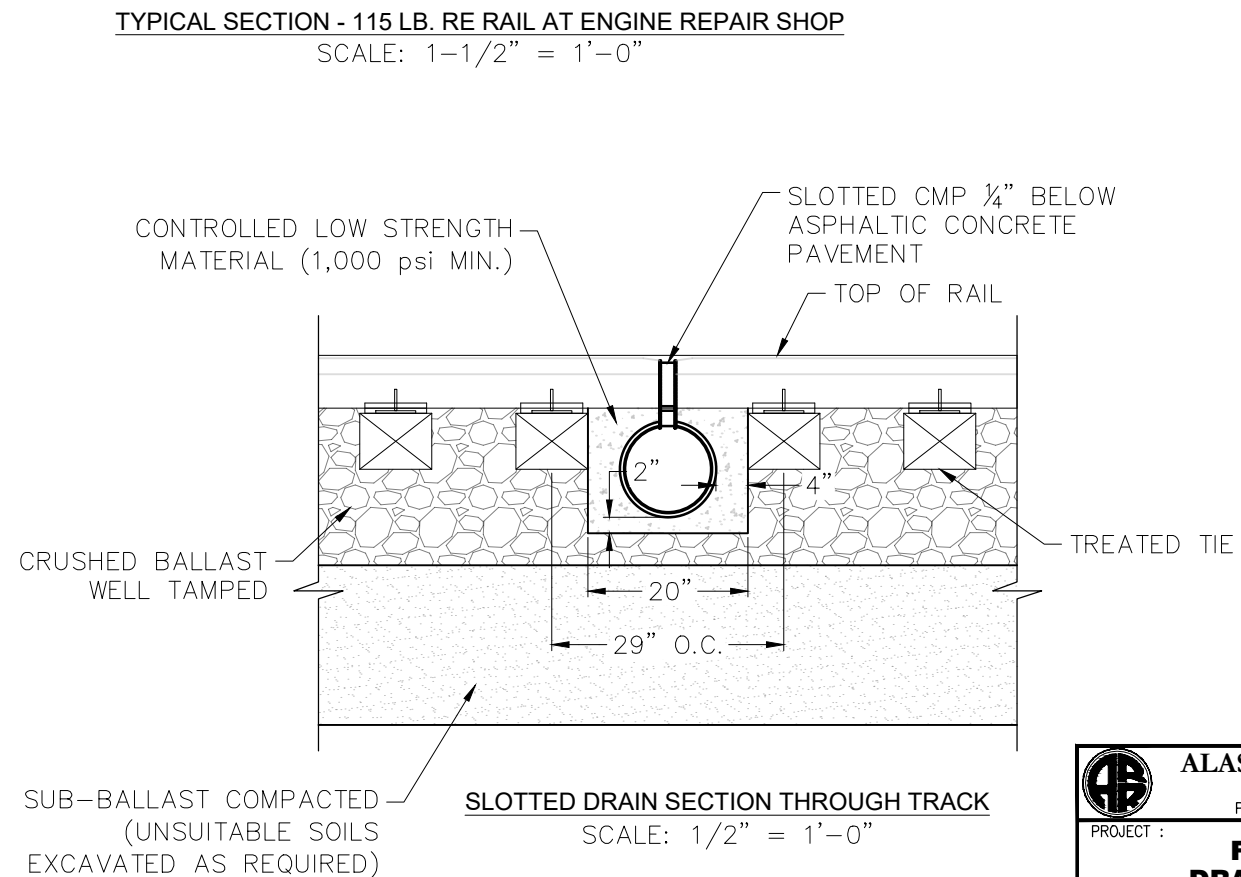
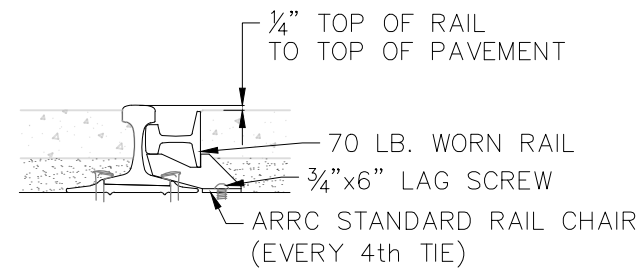
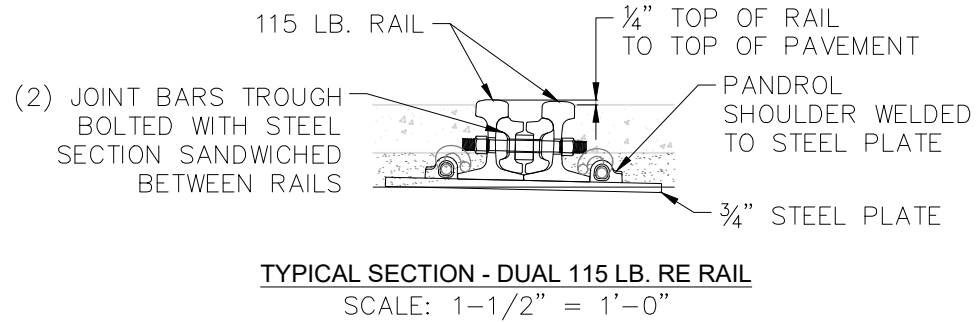
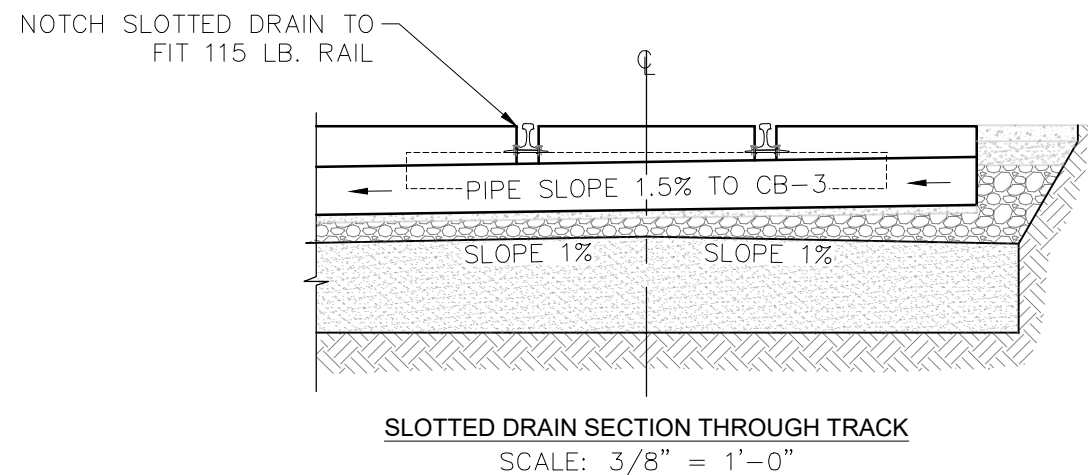
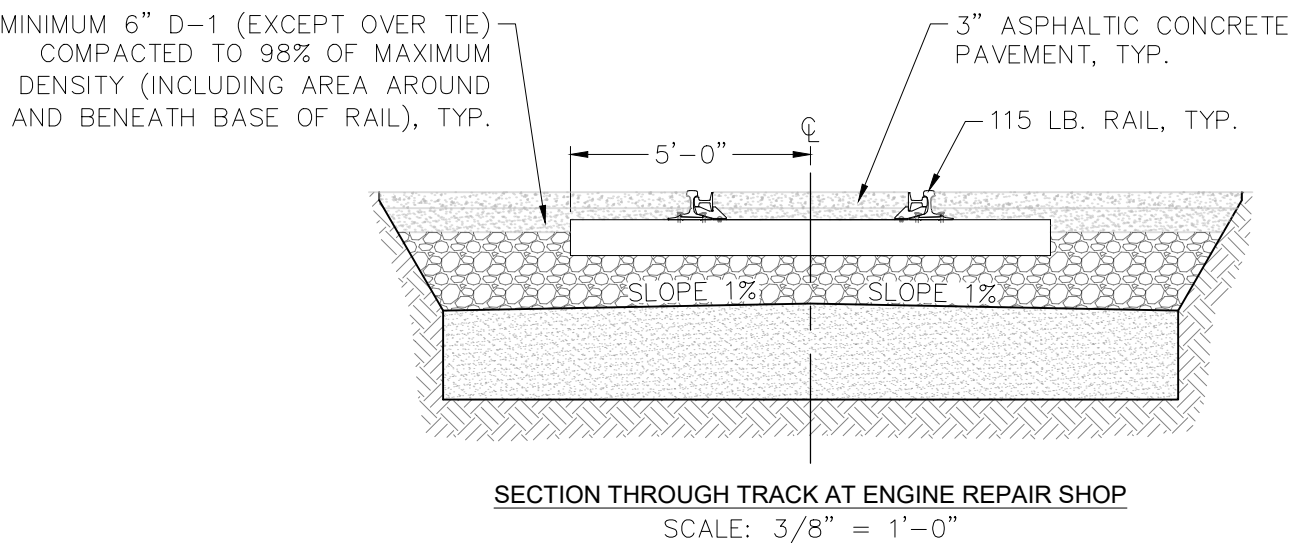
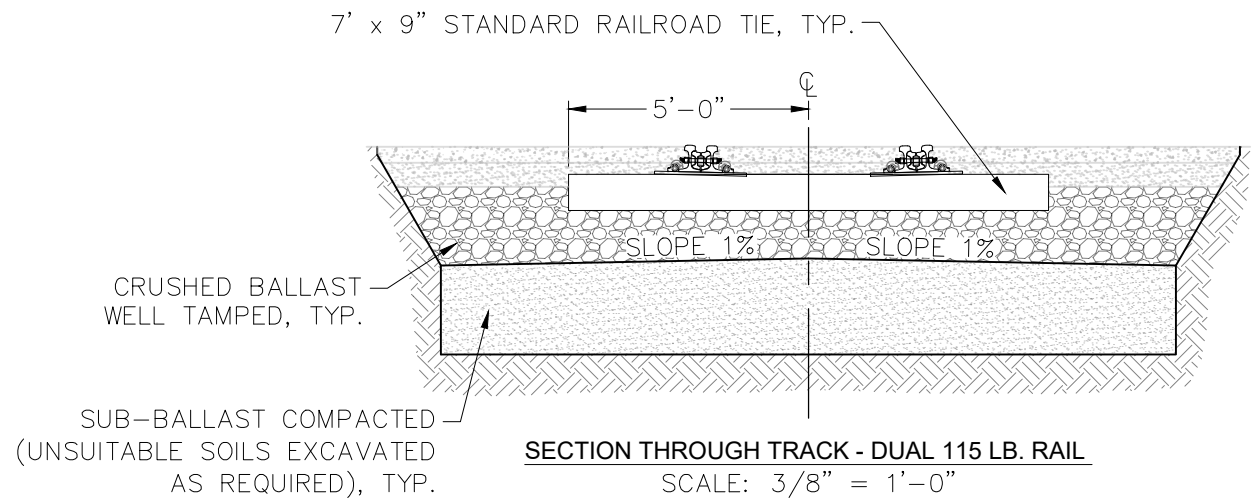


PROPOSED PRECAST CATCH BASIN
MANHOLE
NO SCALE

- NOTES:
1. PROPOSED CATCH BASIN MANHOLES TO MEET REQUIRED LOAD RATING OF DESIGN VEHICLE TOYOTA LOAD HANDLER - LH3.
 2. PROPOSED CATCH BASIN INLET TO MEET HS-20 LOAD RATING.

| REV. | DATE | BY | REVISION |
|------|------|----|----------|
| | | | |
| | | | |
| | | | |

| | | |
|---|------------------|------------------------------|
| ALASKA RAILROAD CORPORATION ENGINEERING SERVICES P.O. BOX 107500, ANCHORAGE, ALASKA 99510-7500 | | |
| PROJECT : FAIRBANKS RAILYARD DRAINAGE REHABILITATION | | |
| TITLE: PROPOSED STORM DRAIN DETAILS | | |
| DESIGNED BY: ARRC | SCALE : AS NOTED | AFE NO.: 10918 |
| DRAWN BY: BLG | DATE : 1/25/2023 | ACAD FILE: |
| CHECKED BY: BAO | | DWG NO. 8 OF 9 |
| APPROVED BY: ARRC | | |



- NOTES:**
1. TIE SPACING TO BE 19 1/2" C/C THROUGH CROSSING.
 2. COORDINATE MOVEMENT OF TIES TO PLACE SLOTTED DRAIN WITH ARRC REPRESENTATIVE.
 3. ALL TIES, TIE PLATES, JOINT FASTENINGS, SPIKES, AND ASSOCIATED HARDWARE SHALL BE LEFT IN PLACE AND NOT REMOVED. ANY DAMAGE TO 115 LB. RAIL WILL REQUIRE REPLACEMENT OF DAMAGED RAIL SECTION.
 4. 115 LB. RUNNING RAIL MUST NOT BE CUT OR SCORED. CONTRACTOR WILL BE REQUIRED TO EXCAVATE AROUND TRACK AND RAILS; TRACK WILL NOT BE REMOVED.

| REV. | DATE | BY | REVISION |
|------|------|----|----------|
| | | | |
| | | | |
| | | | |

| | | |
|---|------------------|------------------------------|
| ALASKA RAILROAD CORPORATION ENGINEERING SERVICES P.O. BOX 107500, ANCHORAGE, ALASKA 99510-7500 | | |
| PROJECT : FAIRBANKS RAILYARD DRAINAGE REHABILITATION | | |
| TITLE: TRACK SECTION DETAILS | | |
| DESIGNED BY: ARRC | SCALE : AS NOTED | AFE NO.: 10918 |
| DRAWN BY: BLG | DATE : 1/25/2023 | ACAD FILE: |
| CHECKED BY: BAO | | DWG NO. 9 OF 9 |
| APPROVED BY: ARRC | | |