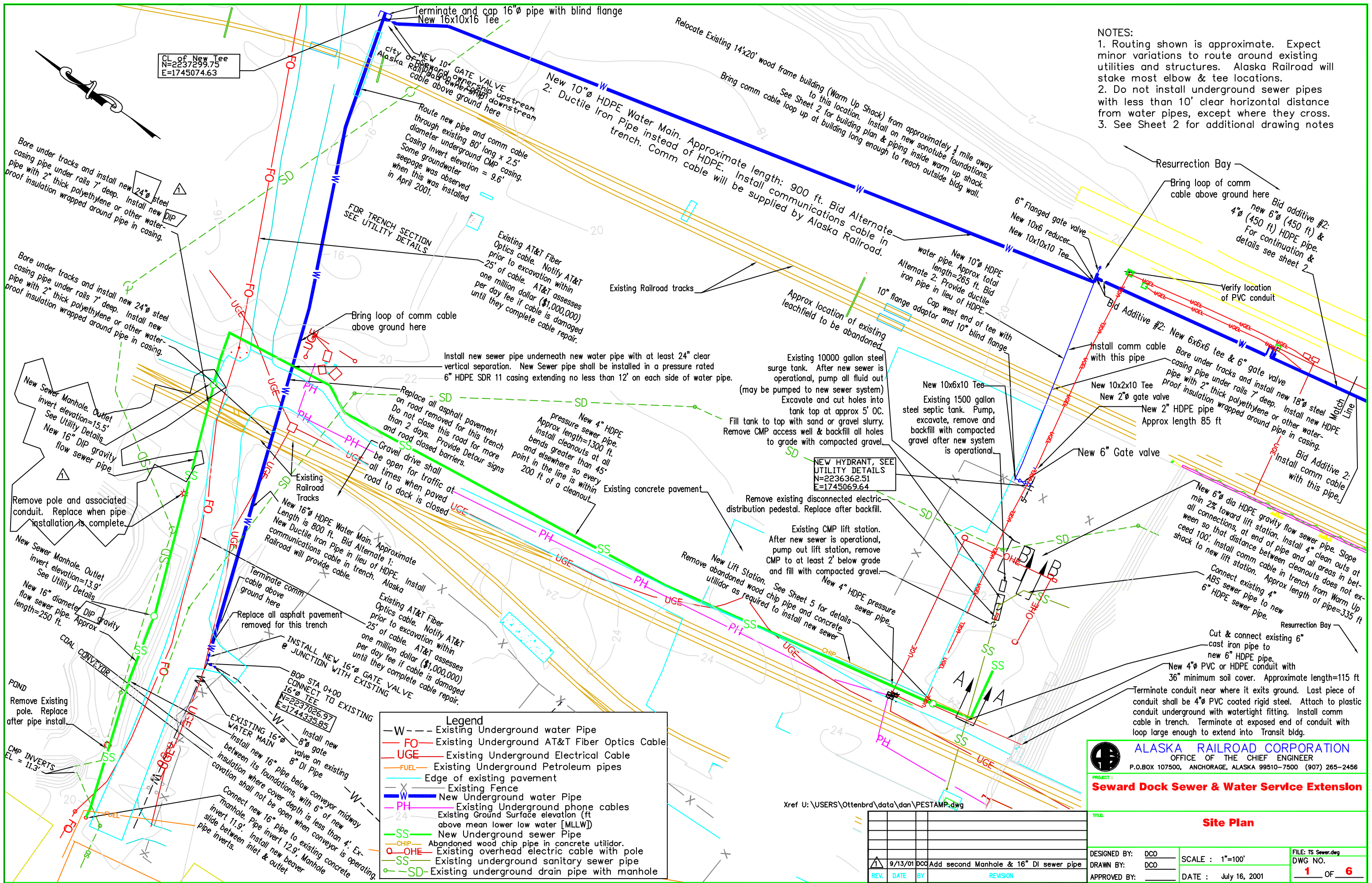


- NOTES:
1. Routing shown is approximate. Expect minor variations to route around existing utilities and structures. Alaska Railroad will stake most elbow & tee locations.
  2. Do not install underground sewer pipes with less than 10' clear horizontal distance from water pipes, except where they cross.
  3. See Sheet 2 for additional drawing notes



CL of New Tee  
N=2237299.75  
E=1745074.63

BOP STA 0+00  
CONNECT TO EXISTING  
16" DI TEE  
N=2237026.97  
E=1744335.85

**Legend**

- W- - Existing Underground water Pipe
- FO- Existing Underground AT&T Fiber Optics Cable
- UGE- Existing Underground Electrical Cable
- FUEL- Existing Underground Petroleum pipes
- - Edge of existing pavement
- X- Existing Fence
- W- New Underground water Pipe
- PH- Existing Underground phone cables
- 24- Existing Ground Surface elevation (ft above mean lower low water [MLLW])
- SS- New Underground sewer Pipe
- CHIP- Abandoned wood chip pipe in concrete utilidor.
- OHE- Existing overhead electric cable with pole
- SS- Existing underground sanitary sewer pipe
- SD- Existing underground drain pipe with manhole

REV.	DATE	BY	REVISION
1	9/13/01	DCO	Add second Manhole & 16" DI sewer pipe

**ALASKA RAILROAD CORPORATION**  
OFFICE OF THE CHIEF ENGINEER  
P.O. BOX 107500, ANCHORAGE, ALASKA 99510-7500 (907) 265-2456

**Seward Dock Sewer & Water Service Extension**

**Site Plan**

DESIGNED BY: DCO  
DRAWN BY: DCO  
APPROVED BY:

SCALE: 1"=100'  
DATE: July 16, 2001

FILE: TS Sewer.dwg  
DWG NO. 1 OF 6