



Alaska Railroad Corporation
327 W. Ship Creek Ave.
Anchorage, AK 99501

June 6, 2022

Addendum 1
ITB #22-37-209901
ARRC Passenger Coach Repainting and Repair

Addendum number 1 has been issued for questions/ clarification.

The Closing Date for this ITB has changed.
Bids will be received until Thursday June 9, 2022 @ 3:00 PM Alaska time.

Questions:

1. Please confirm that there is no interior covering necessary for Windows A1R and A1L after removal and sheeting over of the windows. **No interior covering is required after sheeting in the two windows.**

Clarifications:

Please see the changes to the Side Sill Repair.

1. Change repair of side sheeting to remove and replace lower **8"** of sheeting to fully remove corrosion.
2. Change replacement weld method to two plug welds @ 4" spacing instead of continuous lower fillet weld.

Replace page 8 of the ITB with the one attached herein, and the updated drawings also attached.

All other terms and conditions remain unchanged.
If there are any questions regarding this addendum please let me know.

Thank you,

Greg C Goemer
Sr. Contract Administrator
Alaska Railroad Corporation

3. Replace sheeting and repair underlying structure where decay is found.
4. Paint exterior-exposed, bare-metal window frames to match window seals.
5. Reinstall windows using existing rubber seals and Sikaflex.

Side Sill Repair

1. Block trucks solid.
2. Support side sill with jacks installed a maximum of four (4) feet on center, including additional jacks a minimum of four (4) feet beyond the limits of the repair. Supports shall be located to prevent sagging or distortion to any part of the passenger car while damaged areas are removed. Place supports in locations where contact with the car body structure has sufficient strength to carry the anticipated load without causing damage.
3. Mirror side sill supports on opposite side of coach to maintain lateral car balance.
4. Cut and remove lower 4" 8" of side sheeting, both sides of car, in lengths not exceeding twenty (20) feet.
5. Power tool clean inner structure to bare metal and degrease. **Grit blast exposed side sill to white metal.** Any damage to underlying structure must be inspected with owner's representative and repaired as instructed.
6. If corrosion is found above the location of cut, remove additional side sheet ~~up to 7"~~ **as required** above lower edge of sidesill frame.
7. Coat all exposed **side sill &** inner structure with organic zinc primer (Dimetcote or approved equal).
8. Replace side sheeting with 12ga ASTM A242/A588 (weathering steel). New sheeting to be continuously groove welded to existing side sheeting at top and ~~filet~~-**plug** welded to side sill structure ~~at bottom~~ as indicated in Attachment A.
9. Repeat steps 2-8 until all side sill repairs are made on both sides of coach.

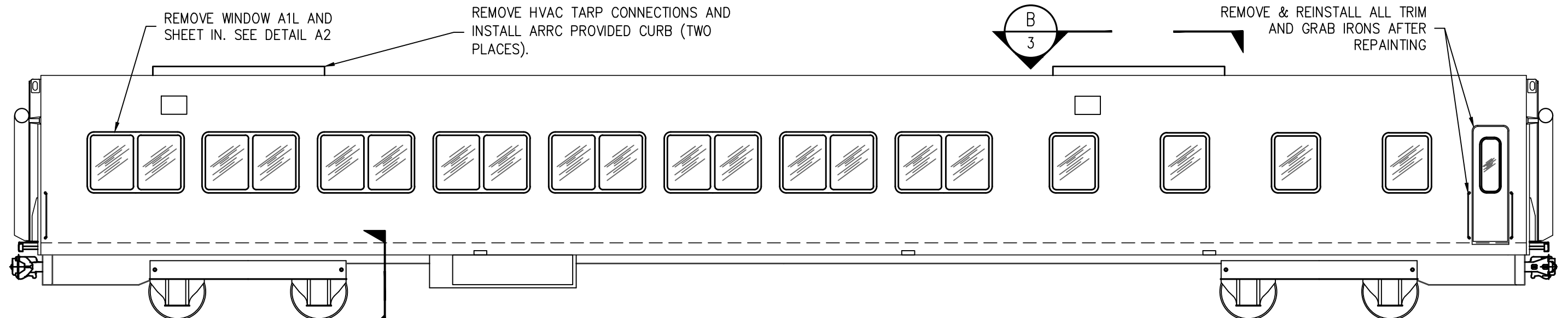
A-End Window Framing and Sheeting

1. Remove A1R & A1L window glazing and seals and return to ARRC.
2. Frame in window opening with fabricated weathering steel c-channel section per Attachment A.
3. Sheet-in window openings using 12ga ASTM A242/A588 (weathering steel), fully weld perimeter and flare bevel weld to new framing per Attachment A.
4. Grind exterior smooth.
5. Apply minimum amount of new body filler to provide a smooth to smooth-rolling exterior surface.

Paint

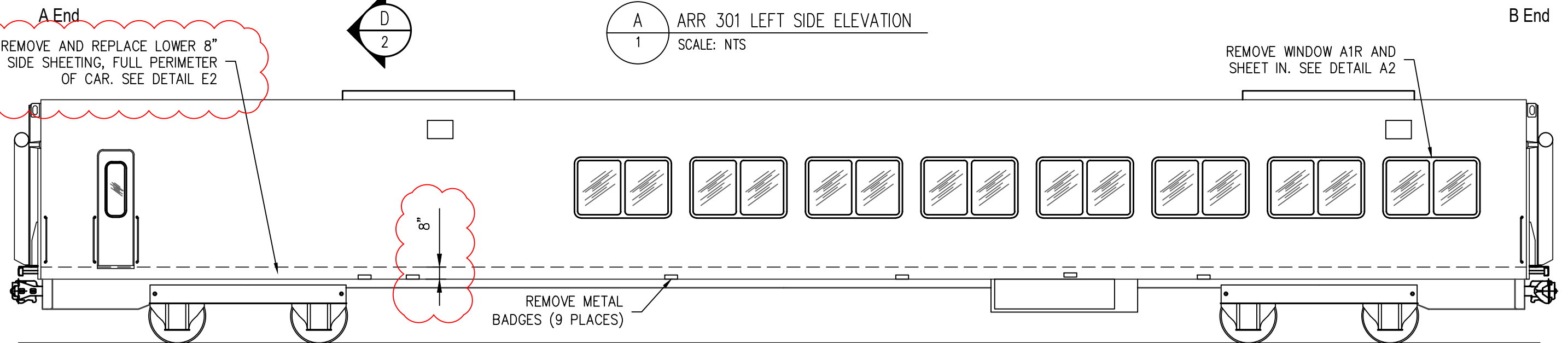
1. After all coach repairs and improvements are made, paint car per Appendix B, 'Specifications for the repainting of passenger cars and locomotive exteriors' and Attachment A page 4, 'ARR 301 Paint and Styling Details'.

P:\Engineering\Motive Power and Equipment\2. Passenger Equipment Rehab\2022 Projects\ARR 301 Heavy Paint\ARR 301 Paint and Repairs, post_investigation.dwg VPort: 11x17 Plot Style: -----

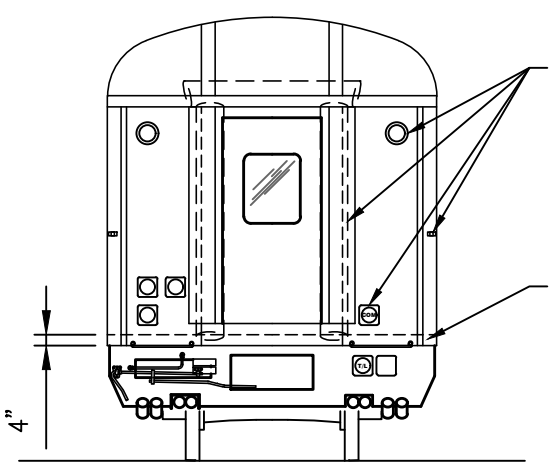


A
1 ARR 301 LEFT SIDE ELEVATION
SCALE: NTS

REMOVE AND REPLACE LOWER 8" OF SIDE SHEETING, FULL PERIMETER OF CAR. SEE DETAIL E2



B
1 ARR 301 RIGHT SIDE ELEVATION
SCALE: NTS



C
1 ARR 301 TYPICAL END ELEVATION
SCALE: NTS

REMOVE & REINSTALL ALL TRAINLINE RECEPTACLES, BLUE FLAG BRACKETS, INTER-CAR DIAPHRAGMS AND END LIGHTS AFTER REPAINTING.

REMOVE AND REPLACE LOWER 4" OF END SILL SHEETING WHERE VISIBLY CORRUGATED OR SHOWING SIGNS OF DECAY.

ALASKA RAILROAD CORPORATION
ENGINEERING SERVICES
P.O. BOX 107500, ANCHORAGE, ALASKA 99510-7500

PROJECT : **MOTIVE POWER AND EQUIPMENT PASSENGER COACHES**

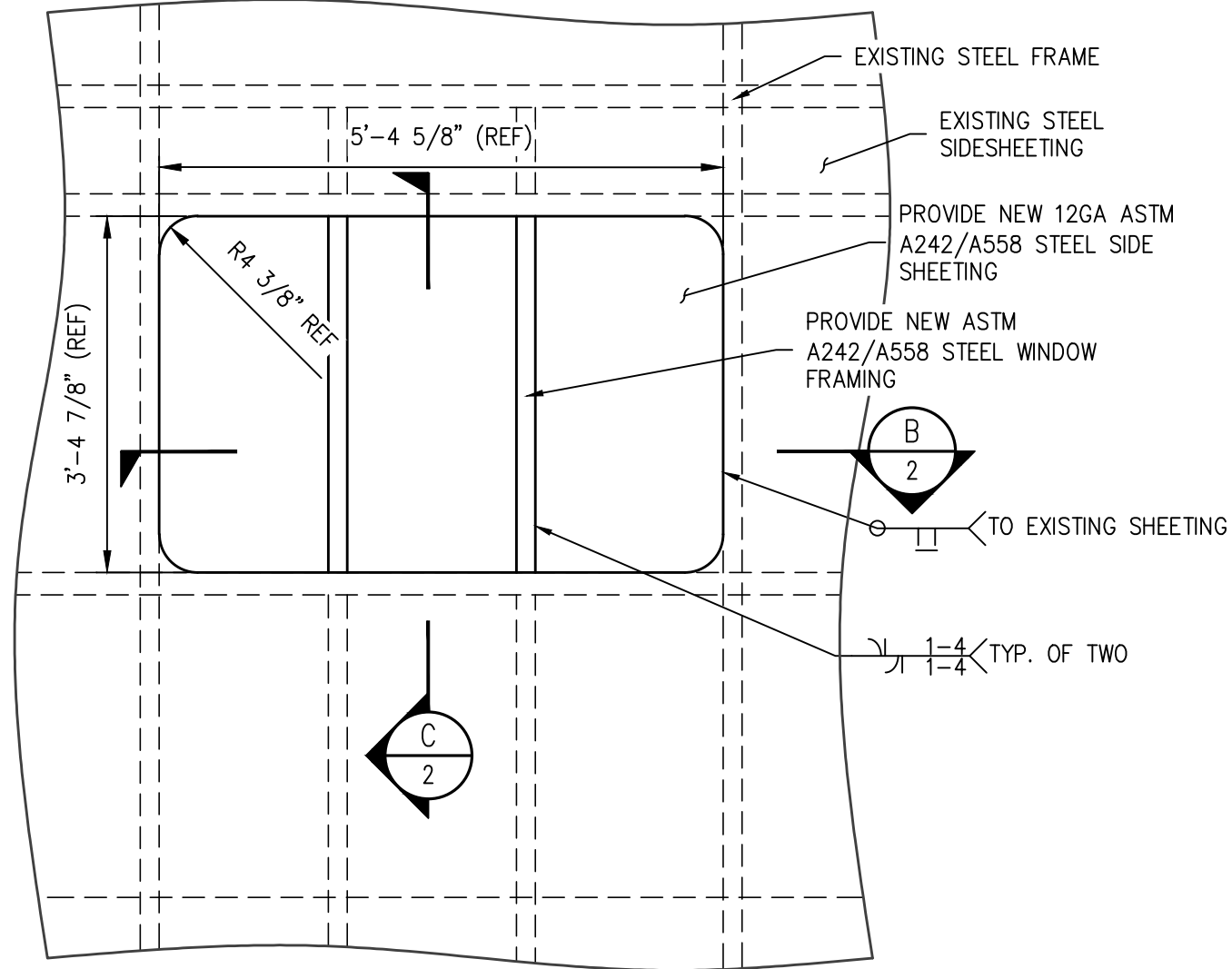
TITLE: **ARR 301 PAINT AND REPAIRS ELEVATION VIEWS**

REV.	DATE	BY	REVISION

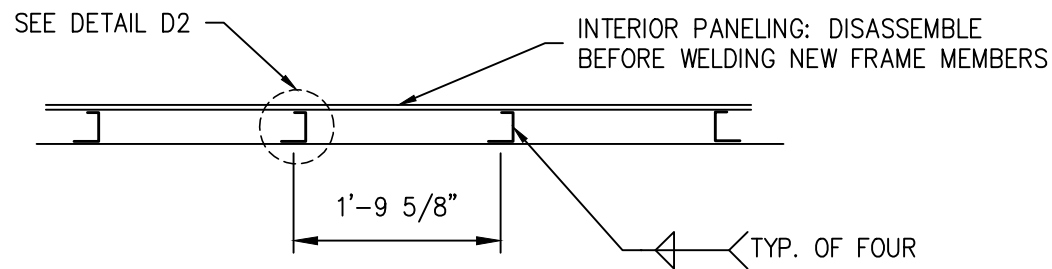
DESIGNED BY: CDL SCALE : AS NOTED
 CHECKED BY: ARRC DATE : MAY 2022
 APPROVED BY: ARRC

DWG NO. **1** OF **4**

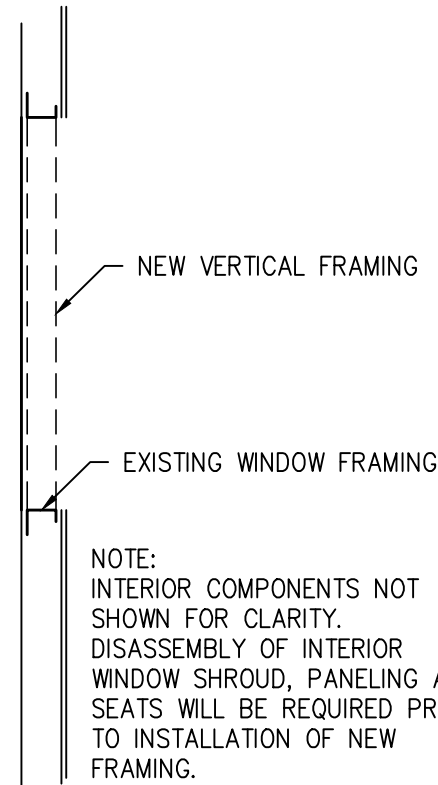
P:\Engineering\Motive Power and Equipment\2. Passenger\Passenger Equipment Rehab\2022 Projects\ARR 301 Heavy Paint and Repairs, post investigation.dwg VPort: 11x17 (2) Plot Style: -----



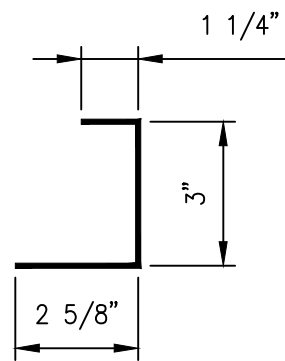
A
2
ARR 301 WINDOW DETAIL
SCALE: NTS



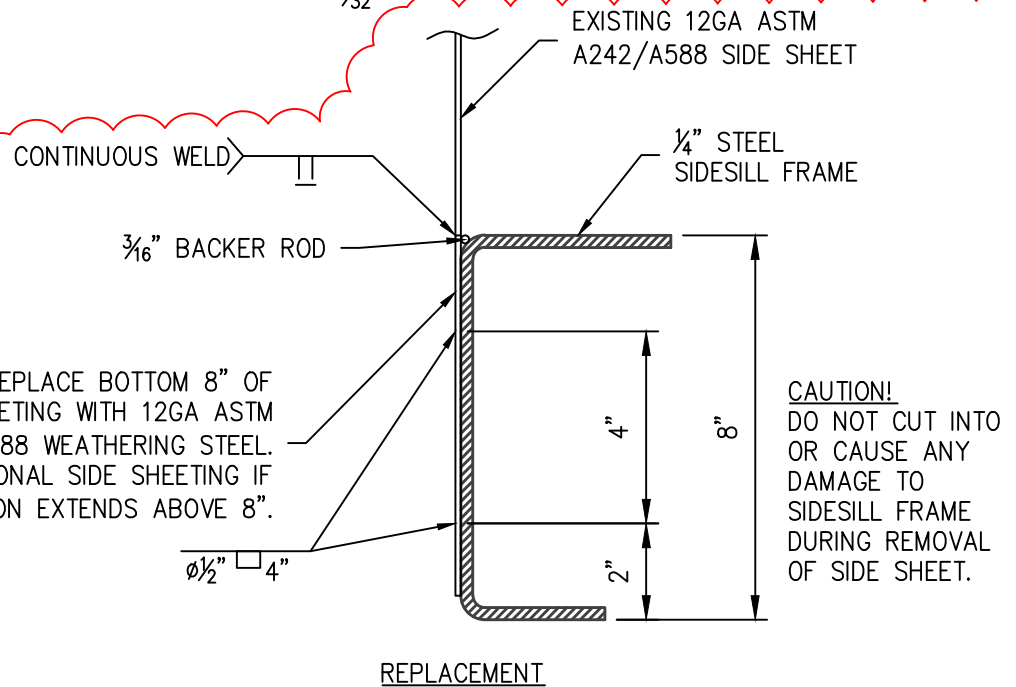
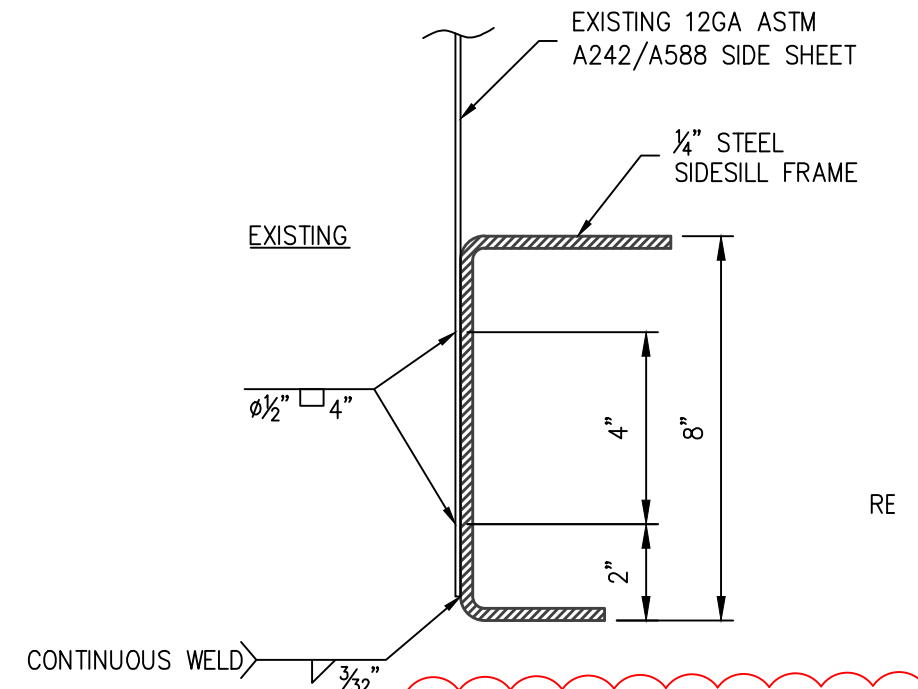
B
2
ARR 301 WINDOW SECTION
SCALE: NTS



C
2
ARR 301 WINDOW SECTION
SCALE: NTS



D
2
NEW WINDOW FRAME SECTION
FABRICATE FROM 3/16 ASTM A242 OR A588



REMOVE & REPLACE BOTTOM 8" OF SIDE SHEETING WITH 12GA ASTM A242/A588 WEATHERING STEEL. REMOVE ADDITIONAL SIDE SHEETING IF CORROSION EXTENDS ABOVE 8".

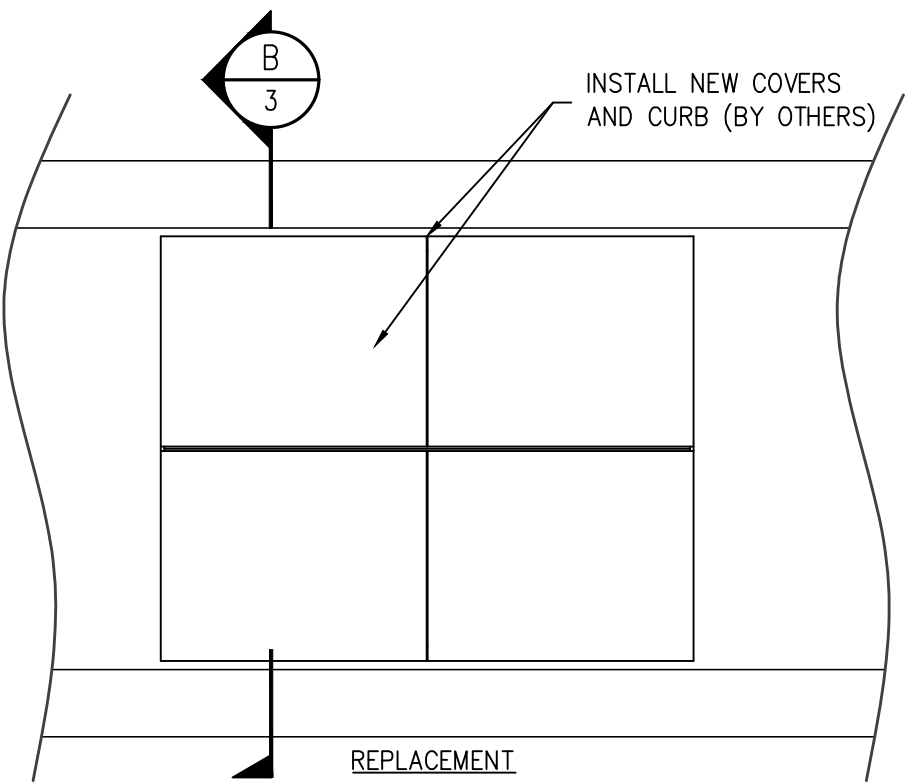
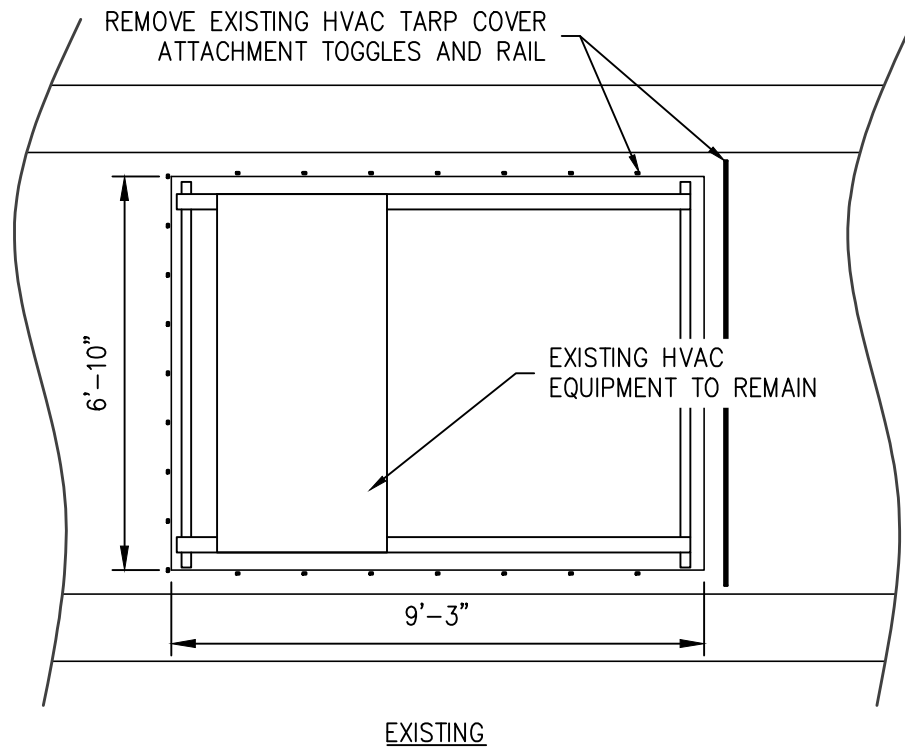
CAUTION!
DO NOT CUT INTO OR CAUSE ANY DAMAGE TO SIDESILL FRAME DURING REMOVAL OF SIDE SHEET.

E
2
SIDE SILL SECTION; EXISTING & REPLACEMENT
SCALE: NTS

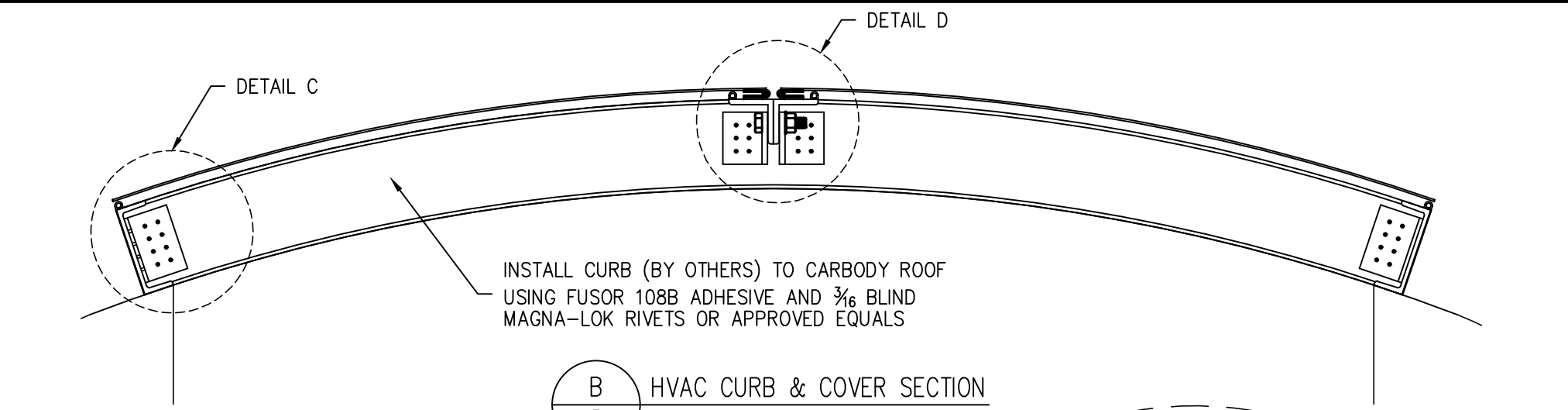
REV.	DATE	BY	REVISION

ALASKA RAILROAD CORPORATION ENGINEERING SERVICES P.O. BOX 107500, ANCHORAGE, ALASKA 99510-7500			
PROJECT : MOTIVE POWER AND EQUIPMENT PASSENGER COACHES			
TITLE: ARR 301 PAINT AND REPAIRS WINDOW SHEETING AND SIDE SILL REPAIR			
DESIGNED BY: CDL	SCALE : AS NOTED	DWG NO.	
CHECKED BY: ARRC	DATE : MAY 2022	2 OF 4	
APPROVED BY: ARRC			

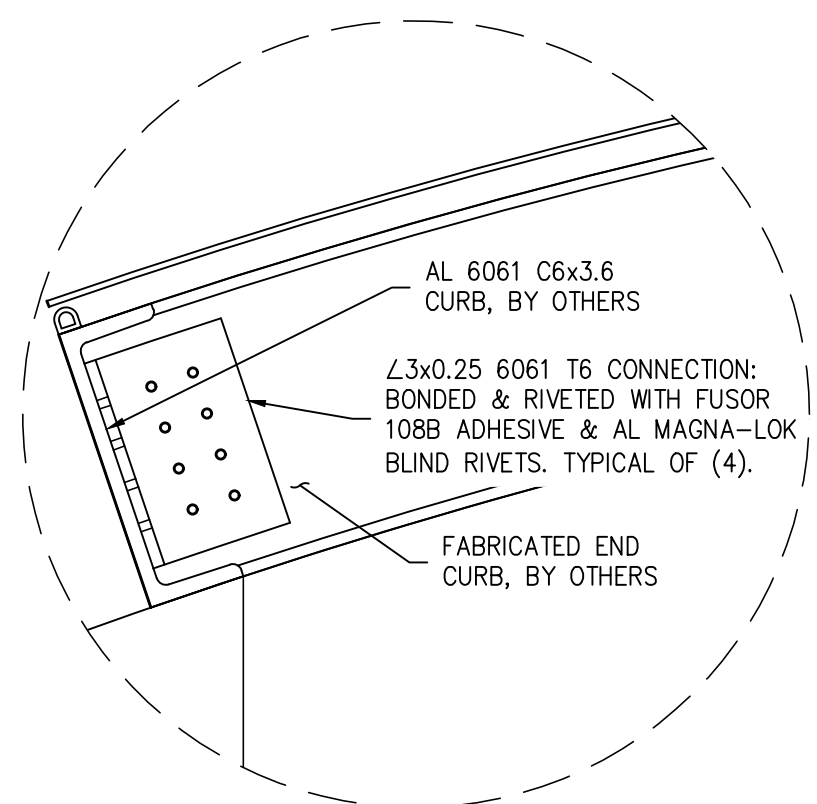
P:\Engineering\Motive Power and Equipment\2. Passenger\Passenger Equipment Rehab\2022 Projects\ARR 301 Heavy Paint\ARR 301 Paint and Repairs, post investigation.dwg VPort: 11x17 (3) Plot Style: -----



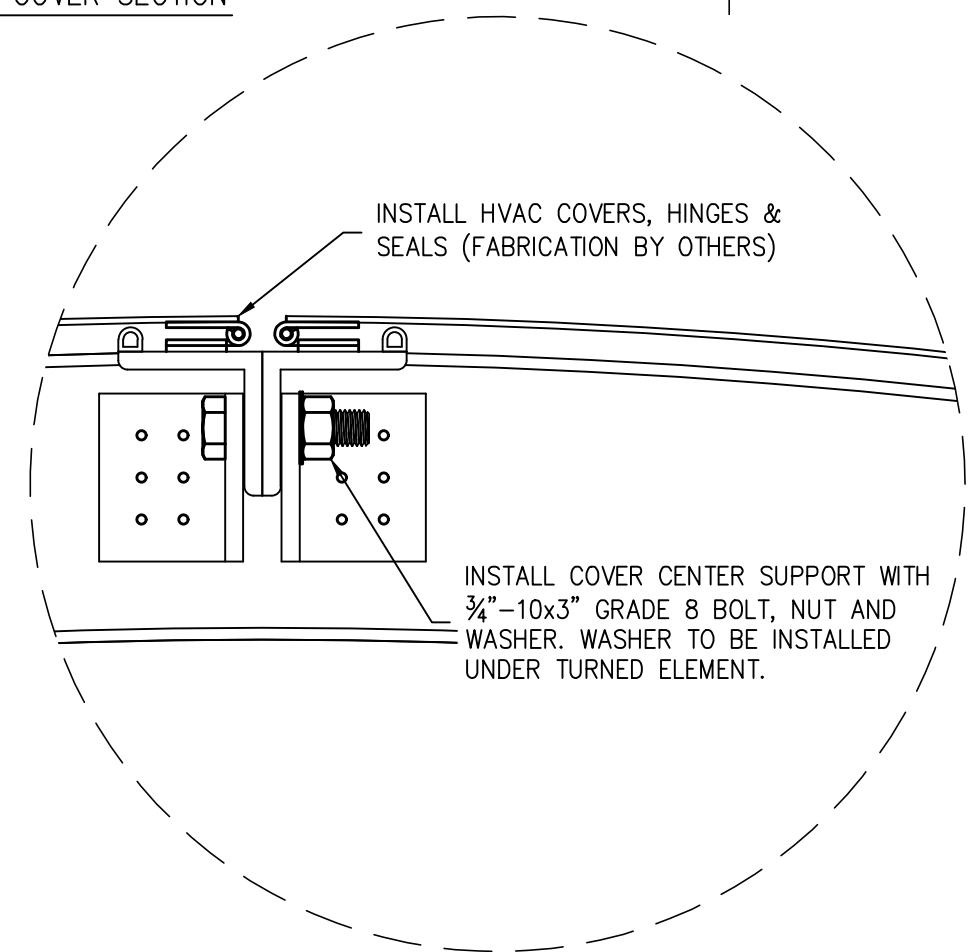
A
3 HVAC COVERS - TOP VIEW EXISTING & REPLACEMENT
SCALE: NTS



B
3 HVAC CURB & COVER SECTION
SCALE: NTS



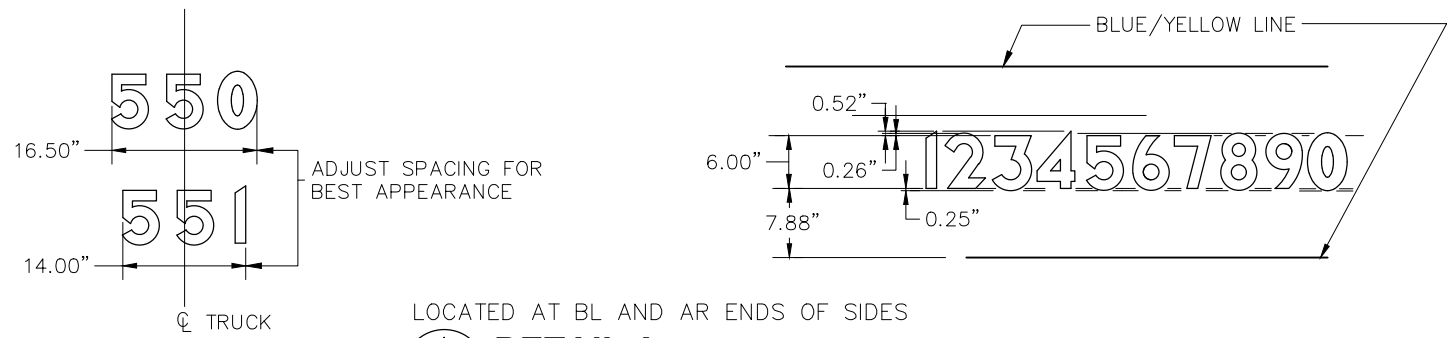
C
3 HVAC CURB DETAIL
SCALE: NTS



D
3 HVAC CURB & COVER DETAIL
SCALE: NTS

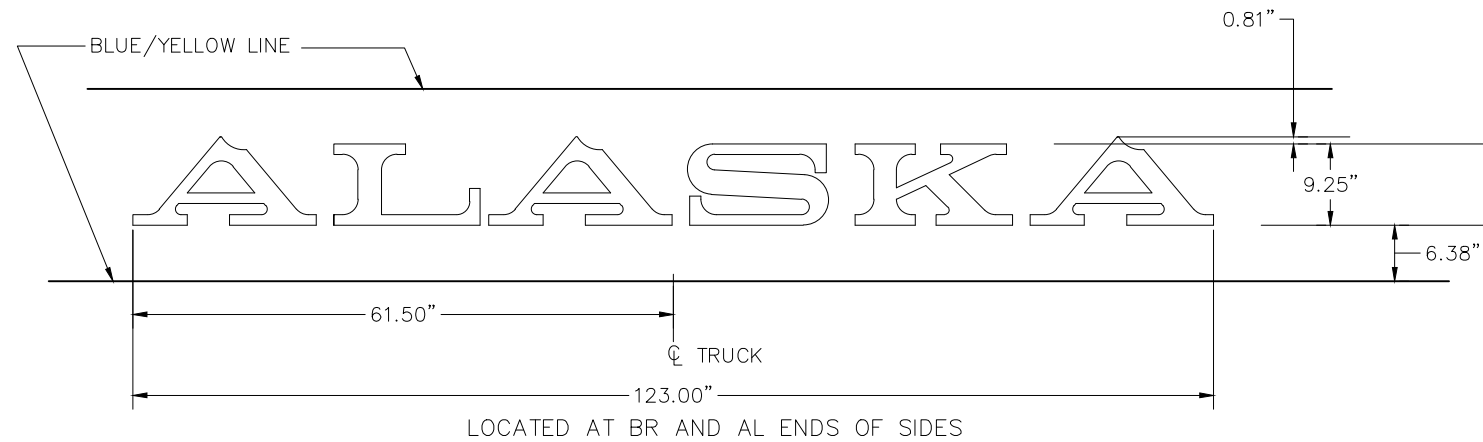
REV.	DATE	BY	REVISION

ALASKA RAILROAD CORPORATION ENGINEERING SERVICES P.O. BOX 107500, ANCHORAGE, ALASKA 99510-7500			
PROJECT :			
MOTIVE POWER AND EQUIPMENT PASSENGER COACHES			
TITLE:			
ARR 301 PAINT AND REPAIRS HVAC COVERS			
DESIGNED BY: <u>CDL</u>	SCALE : AS NOTED	DWG NO.	
CHECKED BY: <u>ARRC</u>	DATE : MAY 2022	3 OF 4	
APPROVED BY: <u>ARRC</u>			



LOCATED AT BL AND AR ENDS OF SIDES

A
1
DETAIL A
NO SCALE



LOCATED AT BR AND AL ENDS OF SIDES

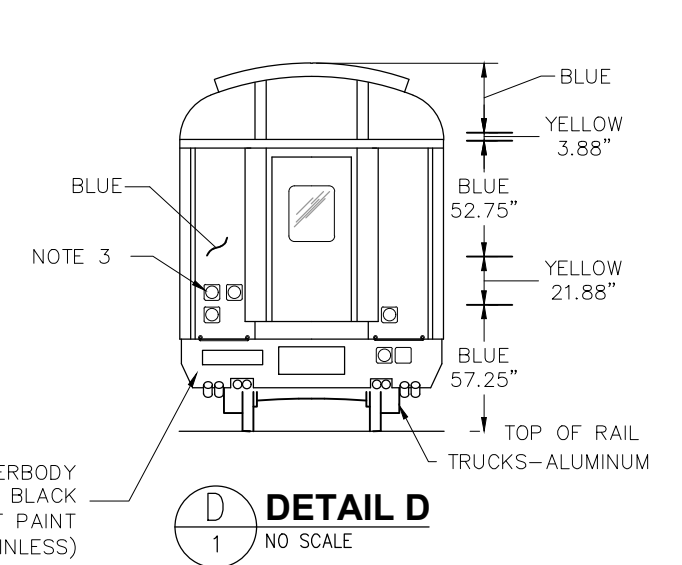
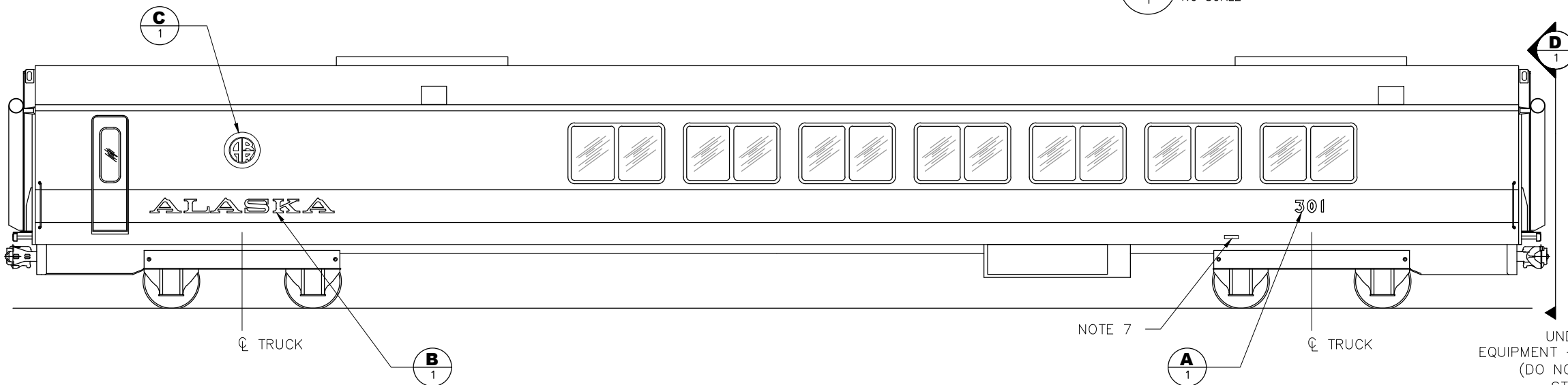
B
1
DETAIL B
NO SCALE

- GENERAL NOTES:**
- DO NOT PAINT STAINLESS STEEL, OTHER BRIGHT METAL, COUPLERS OR WHEELS.
 - ALL PAINTING TO BE IN ACCORDANCE WITH ARRC SPECIFICATION FOR PAINTING OF ROLLING STOCK.
 - COLOR CODE FOR TRAINLINE RECEPTACLES:
 COMMUNICATIONS LIGHT BLUE
 DUMMY WHITE
 POWER RED
 LOCOMOTIVE MU YELLOW
 - DETAILS OF GRAPHICS ARE DOCUMENTED IN THE AUTOCAD FILE OF THIS DRAWING.
 - DIMENSIONS SHOWN IN DETAIL E APPLY AT BODY BOLSTERS. LINES ARE TO FOLLOW CARBODY CAMBER.
 - INTERIOR OF VESTIBULES ARE CONSIDERED EXTERIOR. VERTICAL SURFACES AND CEILINGS ARE TO BE PAINTED BLUE.
 - PAINT ALL UNDER CAR EQUIPMENT BLACK, TRUCKS TO BE PAINTED ALUMINUM SILVER.
 - STAINLESS STEEL GRAB-IRONS TO REMAIN UNPAINTED, MILD STEEL GRAB IRONS MOUNTED TO A OR B ENDS PAINTED YELLOW.
 - AEI TAGS (2) ARE SIDE SPECIFIC; MARK AND REPLACE TO SAME SIDE, SAME LOCATION.
 - NEW RETRO-REFLECTIVE EMERGENCY ACCESS SIGNS WILL BE INSTALLED BY ALASKA RAILROAD.
 - DRAWING DOES NOT PURPORT TO SHOW CONSTRUCTION IN ABSOLUTE AND COMPLETE DETAIL.



24" DIAMETER LOGOTYPE.
 HORIZONTAL POSITION: CENTERED ABOVE ϕ OF TRUCK, LOCATED ONLY AT BR END.
 VERTICAL POSITION: CENTERED IN 52.75" BLUE STRIPE.

C
1
DETAIL C
NO SCALE



D
1
DETAIL D
NO SCALE

ALASKA RAILROAD CORPORATION ENGINEERING SERVICES P.O. BOX 107500, ANCHORAGE, ALASKA 99510-7500			
PROJECT : MOTIVE POWER AND EQUIPMENT PASSENGER COACHES			
TITLE: ARR 301 PAINT AND REPAIR PAINT AND STENCIL ARRANGEMENT			
DESIGNED BY: CDL	SCALE : AS NOTED	DWG NO.	
CHECKED BY: ARRC	DATE : MAY 2022	4 OF 4	
APPROVED BY: ARRC			

REV.	DATE	BY	REVISION