

Opportunity Occupations: Louisiana

Exploring Economic Opportunity for Workers in the Southeast



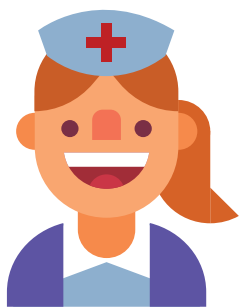
What Are Opportunity Occupations?

Opportunity occupations are occupations that are generally accessible to workers without a bachelor's degree and that pay more than the national median wage (\$41,950 in 2020), adjusted for local cost-of-living differences. They offer economic opportunity for middle-skill workers—those who have finished a high school degree but have not completed college—and for workers in certain occupations who do not have a high school degree.

What Are the Jobs?

Top 10 Opportunity Occupations

Median Annual Wage and Number of Employed in 2020



\$66K

Registered Nurses

41,690 employed



\$42K

Tractor-Trailer Truck Drivers

20,610 employed



\$64K

Supervisors of Construction Trades and Extraction Workers

12,700 employed



\$52K

Welders, Cutters, Solderers, and Brazers

11,840 employed



\$42K

Executive Secretaries and Admin. Assistants

11,320 employed

 Carpenters - **\$46K/0,930 employed**

 Electricians - **\$52K/10,810 employed**

 Police and Sheriff's Patrol Officers - **\$42K/10,700 employed**

 Supervisors of Production and Operating Workers - **\$71K/9,410 employed**

 Plumbers, Pipefitters, and Steamfitters - **\$57K/8,710 employed**

Where Are the Jobs?

Selected Metropolitan Areas

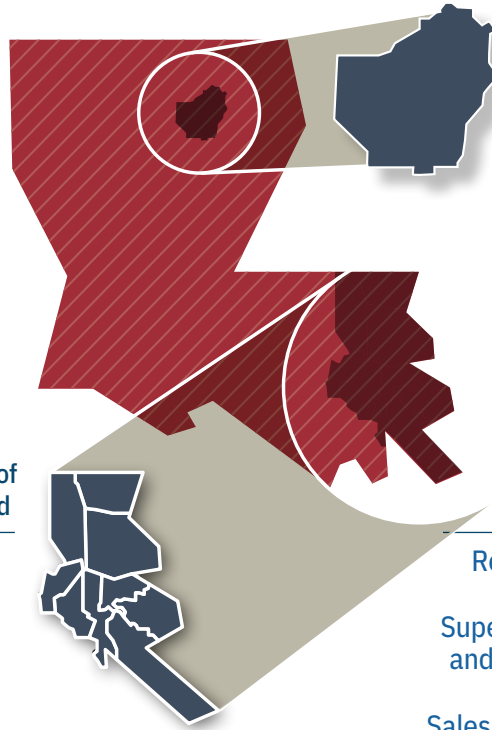
Top Opportunity Occupations, Median Wage, and Number of Employed in 2020

New Orleans-Metairie

26.5%

of workers are employed in opportunity occupations.

Occupation	Median Wage	Number of Employed
Registered Nurses	\$70K	14,290
Tractor-Trailer Truck Drivers	\$42K	4,300
Licensed Practical and Vocational Nurses	\$45K	3,970
Police and Sheriff's Patrol Officers	\$50K	3,120
Electricians	\$52K	2,610



Monroe

32.3%

of workers are employed in opportunity occupations.

Occupation	Median Wage	Number of Employed
Registered Nurses	\$65K	2,050
Supervisors of Office and Admin. Workers	\$46K	900
Sales Representatives	\$50K	590
Supervisors of Production and Operating Workers	\$51K	420
Industrial Machinery Mechanics	\$55K	350

Opportunity Occupations in Louisiana

Distribution of Employment by Wages in 2020



43.8%

Lower Wage Employment

33.1%

Opportunity Employment

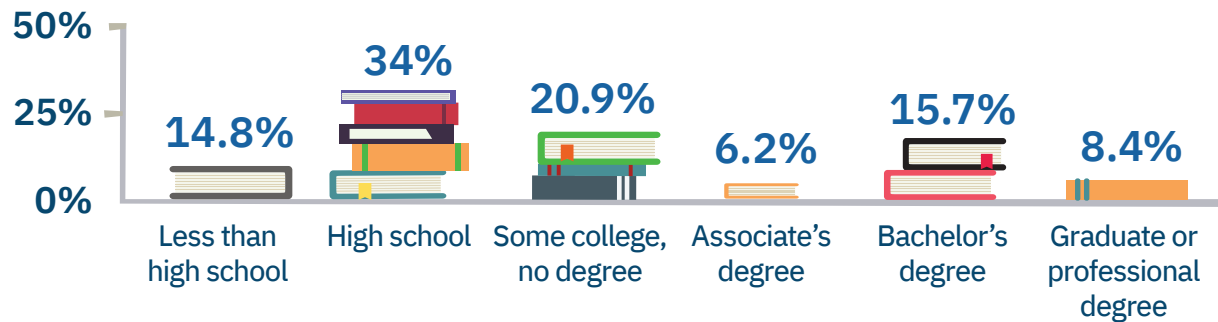
23.0%

Higher Wage, BA Degree Required

Educational Attainment in Louisiana

How Many Pursue Higher Education?

Educational Attainment for People over 25 (2019)



UNEMPLOYMENT RATE BY EDUCATIONAL ATTAINMENT FOR PEOPLE between 25 and 65 (2019)

12.8%

Less than high school

6.5%

High school

4.9%

Some college or associate's degree

2.4%

Bachelor's degree or higher

MEDIAN EARNINGS BY EDUCATIONAL ATTAINMENT FOR PEOPLE OVER 25 (2019)

\$21.9K

Less than high school

\$30.3K

High school

\$34.5K

Some college or associate's degree

\$50.0K

Bachelor's degree

\$60.7K

Graduate or professional degree