

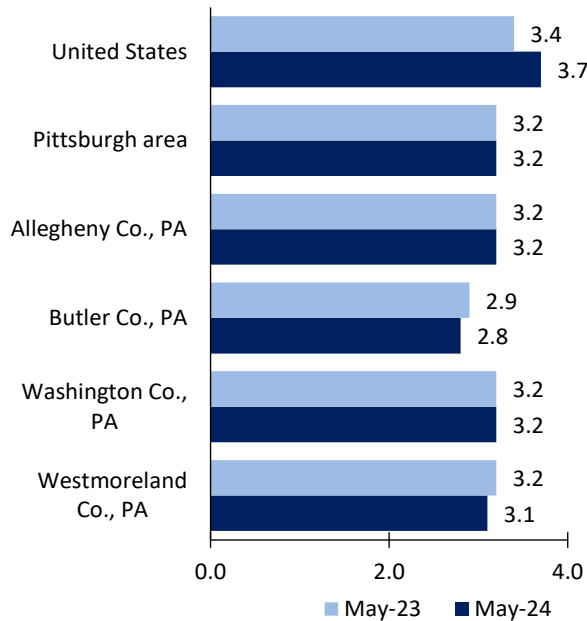
Pittsburgh area Economic Summary

Updated July 05, 2024

This summary presents a sampling of economic information for the area; supplemental data are provided for regions and the nation. Subjects include **unemployment, employment, wages, prices, spending, and benefits**. All data are not seasonally adjusted and some may be subject to revision. Area definitions may differ by subject. For more area summaries and geographic definitions, see www.bls.gov/regions/economic-summaries.htm.

Unemployment rates for the nation and selected areas

Unemployment rates

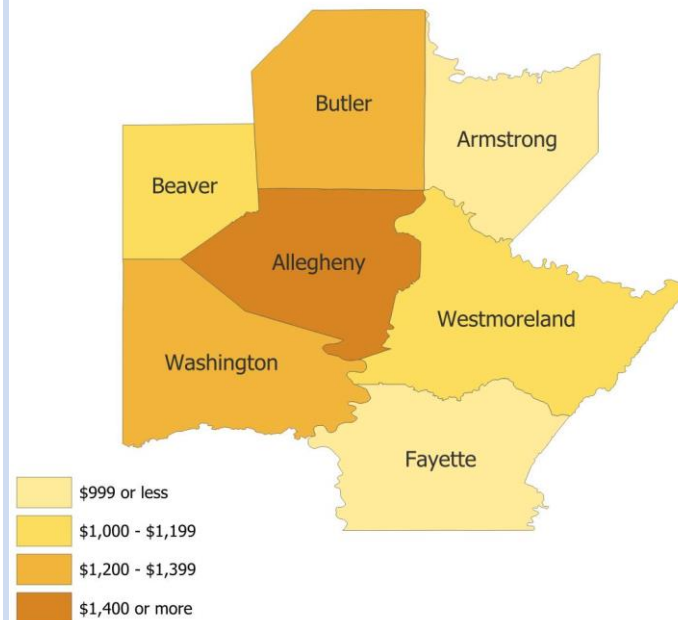


Source: U.S. BLS, Local Area Unemployment Statistics.

Average weekly wages for all industries by county

Pittsburgh area, fourth quarter 2023

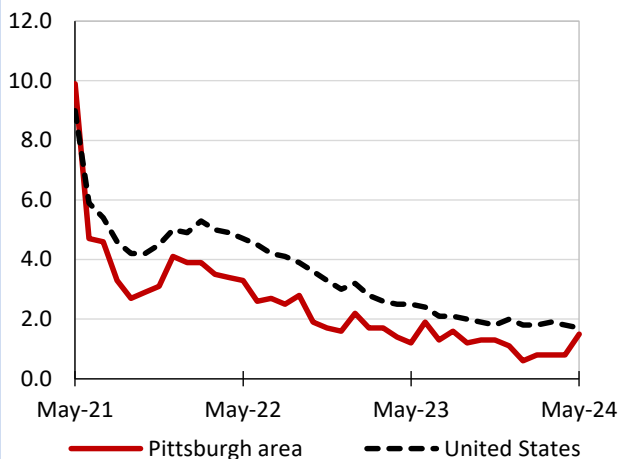
(U.S. = \$1,435; Area = \$1,362)



Source: U.S. BLS, Quarterly Census of Employment and Wages.

Over-the-year changes in employment on nonfarm payrolls and employment by major industry sector

12-month percent changes in employment



Source: U.S. BLS, Current Employment Statistics.

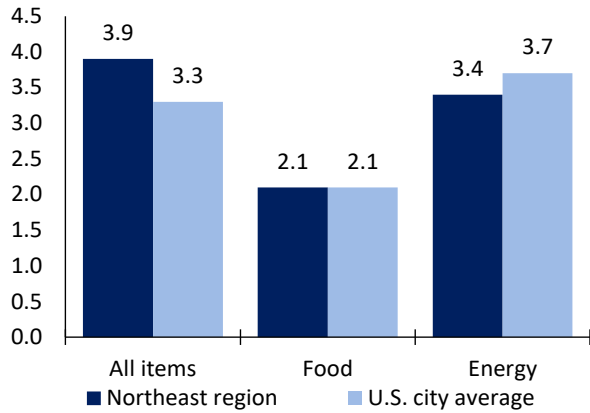
| Pittsburgh area employment (number in thousands) | May 2024 | Change from May 2023 to May 2024 | |
|--|----------|----------------------------------|---------|
| | | Number | Percent |
| Total nonfarm | 1,182.0 | 18.0 | 1.5 |
| Mining and logging | 8.5 | 0.2 | 2.4 |
| Construction | 56.2 | -1.9 | -3.3 |
| Manufacturing | 86.1 | 1.7 | 2.0 |
| Trade, transportation, and utilities | 206.3 | 1.7 | 0.8 |
| Information | 21.3 | -0.3 | -1.4 |
| Financial activities | 74.0 | 1.7 | 2.4 |
| Professional and business services | 186.9 | -3.3 | -1.7 |
| Education and health services | 256.6 | 11.3 | 4.6 |
| Leisure and hospitality | 123.3 | 4.5 | 3.8 |
| Other services | 48.7 | 0.9 | 1.9 |
| Government | 114.1 | 1.5 | 1.3 |

Source: U.S. BLS, Current Employment Statistics.



Over-the-year change in the prices paid by urban consumers for selected categories

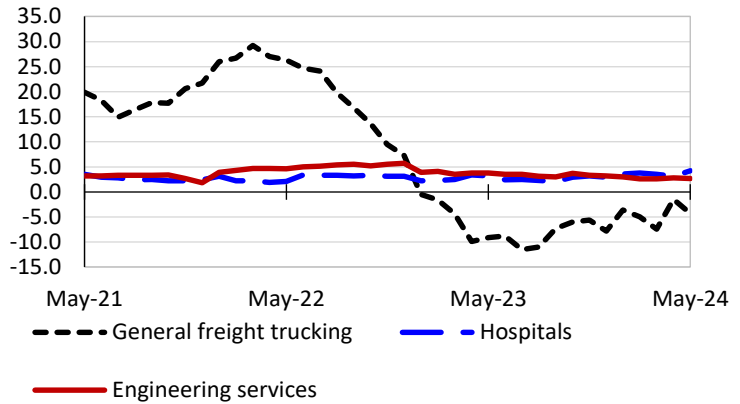
12-month percent change in CPI-U, May 2024



Source: U.S. BLS, Consumer Price Index.

Over-the-year changes in the selling prices received by producers for selected industries nationwide

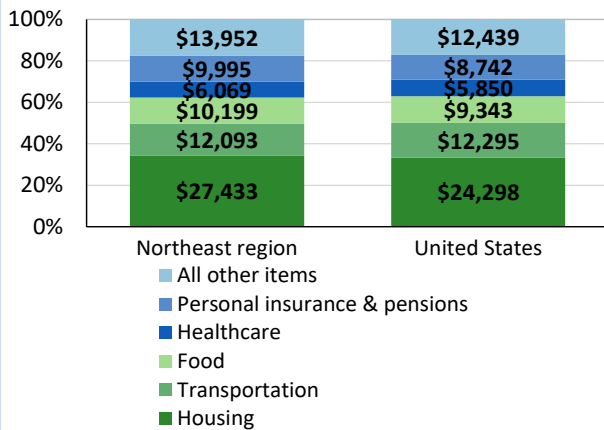
12-month percent changes in PPI



Source: U.S. BLS, Producer Price Index.

Average annual spending and percent distribution for selected categories

Average annual expenditures, United States and Northeast region, 2022



Source: U.S. BLS, Consumer Expenditure Survey.

Average hourly wages for selected occupations

| Occupation | Pittsburgh area | United States |
|--|-----------------|---------------|
| All occupations | \$29.60 | \$31.48 |
| Civil engineers | 46.89 | 48.64 |
| Accountants and auditors | 38.80 | 43.65 |
| Carpenters | 30.00 | 29.31 |
| Substance abuse, behavioral disorder, and mental health counselors | 25.94 | 28.89 |
| Office clerks, general | 20.67 | 20.94 |
| Cashiers | 13.63 | 14.77 |

Source: U.S. BLS, Occupational Employment and Wage Statistics, May 2023.

Employer costs per hour worked for wages and selected employee benefits by geographic division

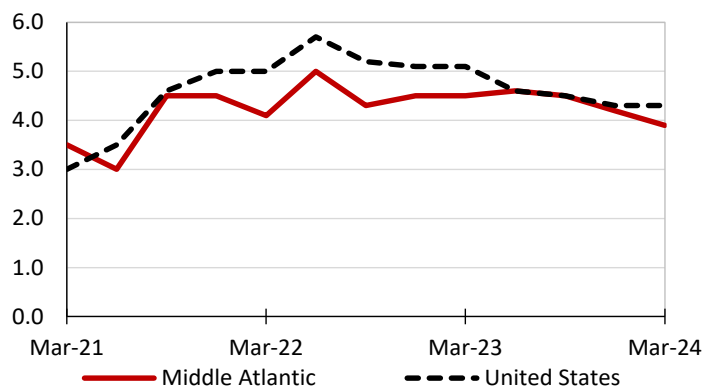
| Private industry, March 2024 | Middle Atlantic | United States |
|------------------------------|-----------------|---------------|
| Total compensation | \$53.35 | \$43.78 |
| Wages and salaries | 36.97 | 30.76 |
| Total benefits | 16.38 | 13.02 |
| Paid leave | 4.39 | 3.31 |
| Vacation | 2.19 | 1.69 |
| Supplemental pay | 1.87 | 1.77 |
| Insurance | 3.99 | 3.20 |
| Retirement and savings | 2.20 | 1.52 |
| Legally required benefits | 3.94 | 3.21 |

(1) The states that compose the Middle Atlantic census division are: NJ, NY, and PA.

Source: U.S. BLS, Employer Costs for Employee Compensation.

Over-the-year changes in wages and salaries

12-month percent changes in ECI



Source: U.S. BLS, Employment Cost Index.

