

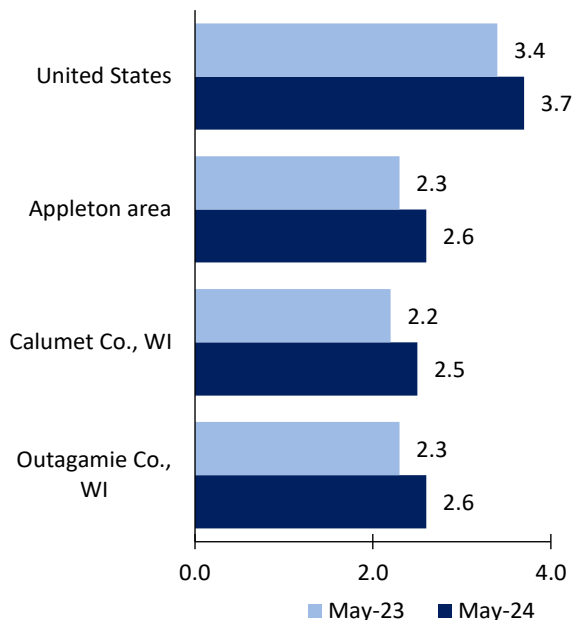
# Appleton Area Economic Summary

Updated July 03, 2024

This summary presents a sampling of economic information for the area; supplemental data are provided for regions and the nation. Subjects include **unemployment, employment, wages, prices, spending, and benefits**. All data are not seasonally adjusted and some may be subject to revision. Area definitions may differ by subject. For more area summaries and geographic definitions, see [www.bls.gov/regions/economic-summaries.htm](http://www.bls.gov/regions/economic-summaries.htm).

## Unemployment rates for the nation and selected areas

### Unemployment rates



Source: U.S. BLS, Local Area Unemployment Statistics.

## Average weekly wages for all industries by county

### Appleton area, fourth quarter 2023

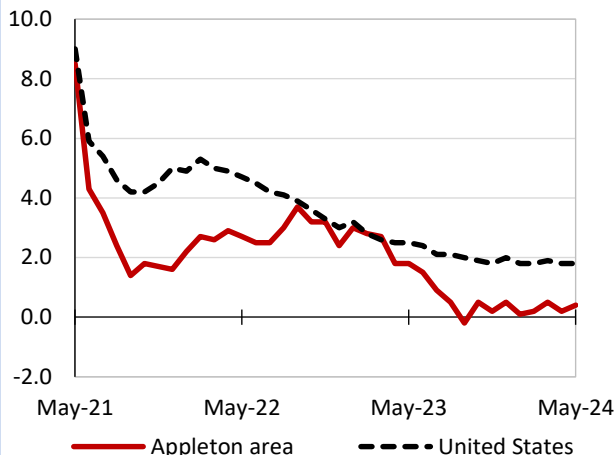
(U.S. = \$1,435; Area = \$1,189)



Source: U.S. BLS, Quarterly Census of Employment and Wages.

## Over-the-year changes in employment on nonfarm payrolls and employment by major industry sector

### 12-month percent changes in employment



Source: U.S. BLS, Current Employment Statistics.

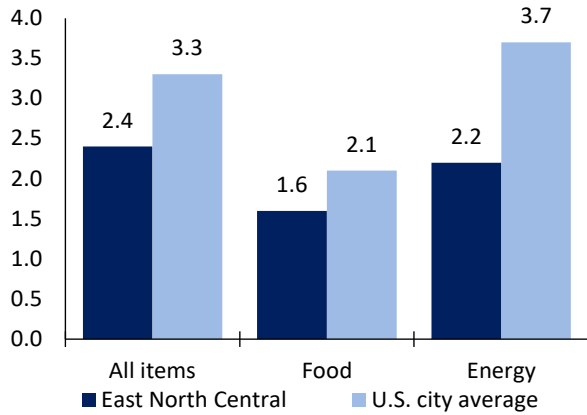
| Appleton area employment<br>(number in thousands) | May 2024 | Change from May 2023 to May 2024 |         |
|---|----------|----------------------------------|---------|
|   |          | Number                           | Percent |
| Total nonfarm                                     | 129.9    | 0.5                              | 0.4     |
| Mining, logging, and construction                 | 10.3     | 0.1                              | 1.0     |
| Manufacturing                                     | 24.5     | -0.5                             | -2.0    |
| Trade, transportation, and utilities              | 24.9     | 0.3                              | 1.2     |
| Information                                       | 1.3      | -0.1                             | -7.1    |
| Financial activities                              | 6.0      | 0.0                              | 0.0     |
| Professional and business services                | 13.9     | 0.1                              | 0.7     |
| Education and health services                     | 17.0     | 0.3                              | 1.8     |
| Leisure and hospitality                           | 12.4     | -0.2                             | -1.6    |
| Other services                                    | 7.1      | 0.2                              | 2.9     |
| Government  | 12.5     | 0.3                              | 2.5     |

Source: U.S. BLS, Current Employment Statistics.



Over-the-year change in the prices paid by urban consumers for selected categories

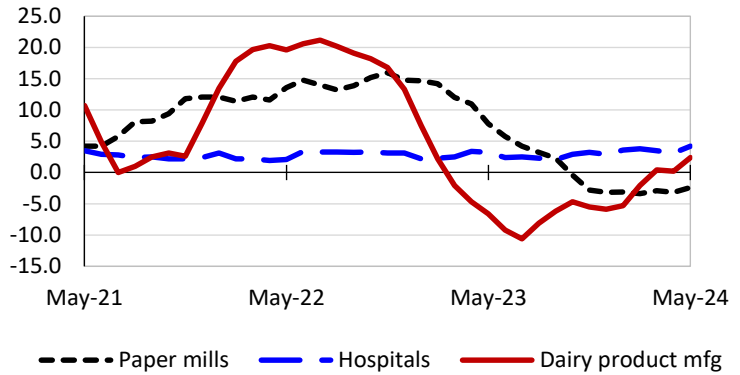
12-month percent change in CPI-U, May 2024



Source: U.S. BLS, Consumer Price Index.

Over-the-year changes in the selling prices received by producers for selected industries nationwide

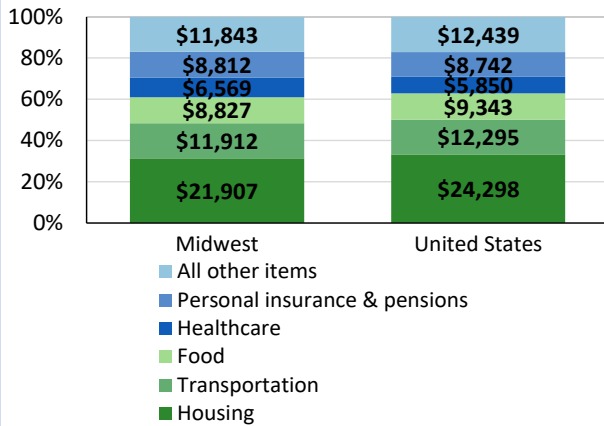
12-month percent changes in PPI



Source: U.S. BLS, Producer Price Index.

Average annual spending and percent distribution for selected categories

Average annual expenditures, United States and Midwest, 2022



Source: U.S. BLS, Consumer Expenditure Survey.

Average hourly wages for selected occupations

| Occupation                               | Appleton area | United States |
|--|---------------|---------------|
| All occupations                          | \$27.53       | \$31.48       |
| Accountants and auditors                 | 39.96         | 43.65         |
| Electricians                             | 34.15         | 32.60         |
| Welders, cutters, solderers, and brazers | 25.81         | 25.31         |
| Maintenance and repair workers, general  | 24.44         | 23.87         |
| Industrial truck and tractor operators   | 21.65         | 21.98         |
| Customer service representatives         | 20.49         | 20.92         |

Source: U.S. BLS, Occupational Employment and Wage Statistics, May 2023.

Employer costs per hour worked for wages and selected employee benefits by geographic division

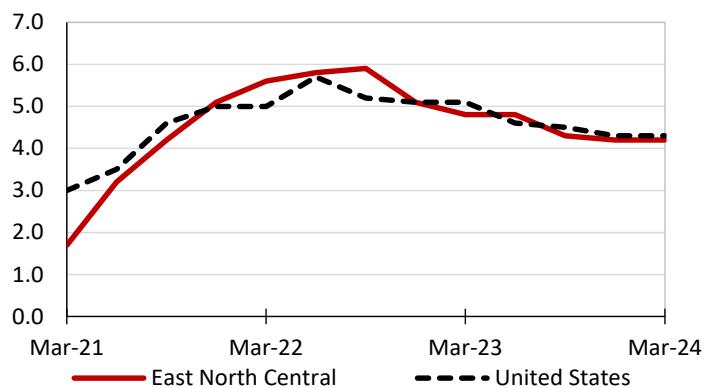
| Private industry, March 2024 | East North Central (1) | United States |
|------------------------------|------------------------|---------------|
| Total compensation           | \$42.50                | \$43.78       |
| Wages and salaries           | 29.43                  | 30.76         |
| Total benefits               | 13.07                  | 13.02         |
| Paid leave                   | 3.09                   | 3.31          |
| Vacation                     | 1.63                   | 1.69          |
| Supplemental pay             | 1.98                   | 1.77          |
| Insurance                    | 3.34                   | 3.20          |
| Retirement and savings       | 1.61                   | 1.52          |
| Legally required benefits    | 3.05                   | 3.21          |

(1) The states that compose the East North Central census division are: IL, IN, MI, OH, and WI.

Source: U.S. BLS, Employer Costs for Employee Compensation.

Over-the-year changes in wages and salaries

12-month percent changes in ECI



Source: U.S. BLS, Employment Cost Index.

