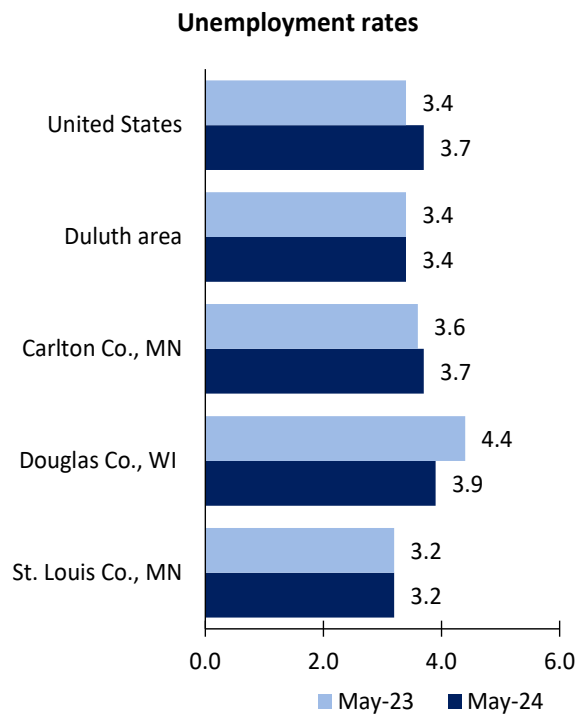


Duluth Area Economic Summary

Updated July 03, 2024

This summary presents a sampling of economic information for the area; supplemental data are provided for regions and the nation. Subjects include **unemployment, employment, wages, prices, spending, and benefits**. All data are not seasonally adjusted and some may be subject to revision. Area definitions may differ by subject. For more area summaries and geographic definitions, see www.bls.gov/regions/economic-summaries.htm.

Unemployment rates for the nation and selected areas

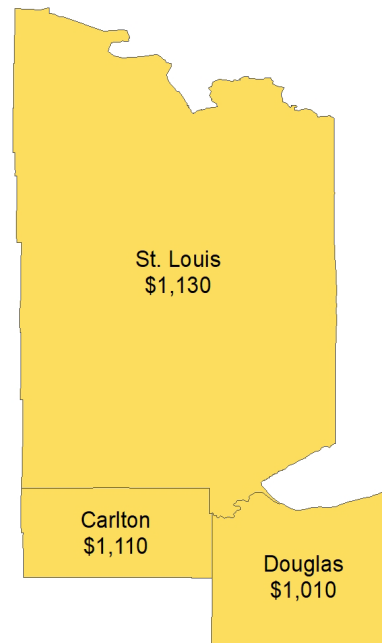


Source: U.S. BLS, Local Area Unemployment Statistics.

Average weekly wages for all industries by county

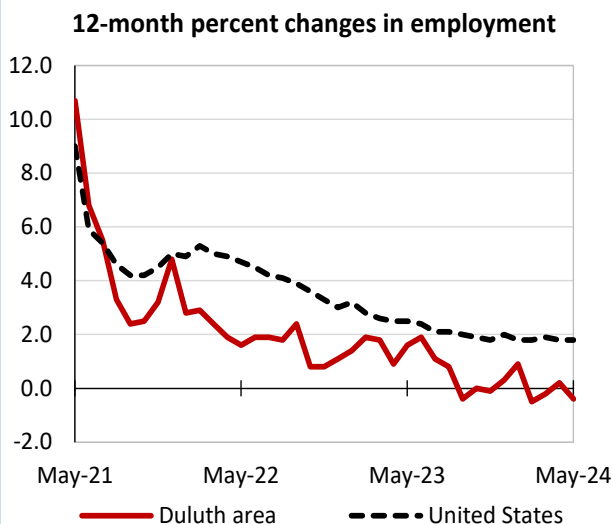
Duluth area, fourth quarter 2023

(U.S. = \$1,435; Area = \$1,113)



Source: U.S. BLS, Quarterly Census of Employment and Wages.

Over-the-year changes in employment on nonfarm payrolls and employment by major industry sector



Source: U.S. BLS, Current Employment Statistics.

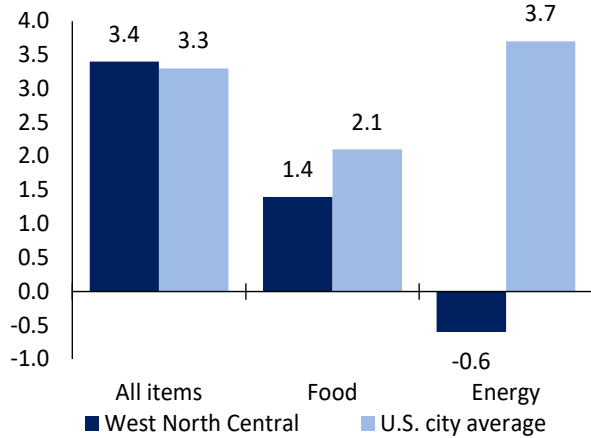
Duluth area employment (number in thousands)	May 2024	Change from May 2023 to May 2024	
		Number	Percent
Total nonfarm	132.6	-0.5	-0.4
Mining, logging, and construction	9.1	-1.1	-10.8
Manufacturing	8.4	0.0	0.0
Trade, transportation, and utilities	24.6	0.8	3.4
Information	1.0	0.0	0.0
Financial activities	4.9	-0.1	-2.0
Professional and business services	7.5	-0.2	-2.6
Education and health services	32.1	1.2	3.9
Leisure and hospitality	14.3	-0.1	-0.7
Other services	6.4	0.4	6.7
Government	24.3	-1.4	-5.4

Source: U.S. BLS, Current Employment Statistics.



Over-the-year change in the prices paid by urban consumers for selected categories

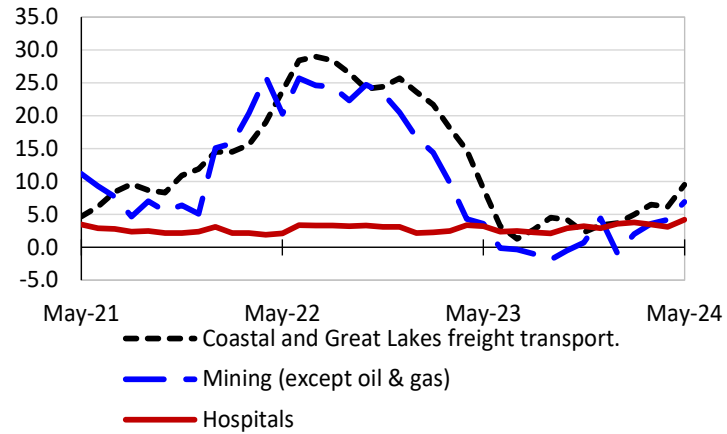
12-month percent change in CPI-U, May 2024



Source: U.S. BLS, Consumer Price Index.

Over-the-year changes in the selling prices received by producers for selected industries nationwide

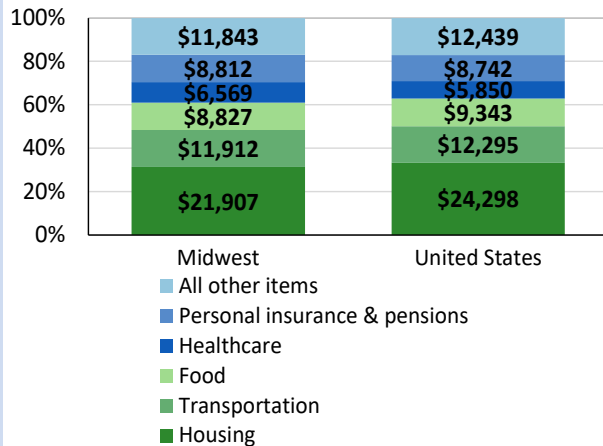
12-month percent changes in PPI



Source: U.S. BLS, Producer Price Index.

Average annual spending and percent distribution for selected categories

Average annual expenditures, United States and Midwest, 2022



Source: U.S. BLS, Consumer Expenditure Survey.

Average hourly wages for selected occupations

Occupation	Duluth area	United States
All occupations	\$28.13	\$31.48
Occupational health and safety specialists	41.98	41.14
Career/technical education teachers, postsecondary	36.43	32.84
Insurance sales agents	34.88	38.32
Mental health and substance abuse social workers	32.66	30.71
Heavy and tractor-trailer truck drivers	29.28	26.92
Cooks, restaurant	16.88	17.34

Source: U.S. BLS, Occupational Employment and Wage Statistics, May 2023.

Employer costs per hour worked for wages and selected employee benefits by geographic division

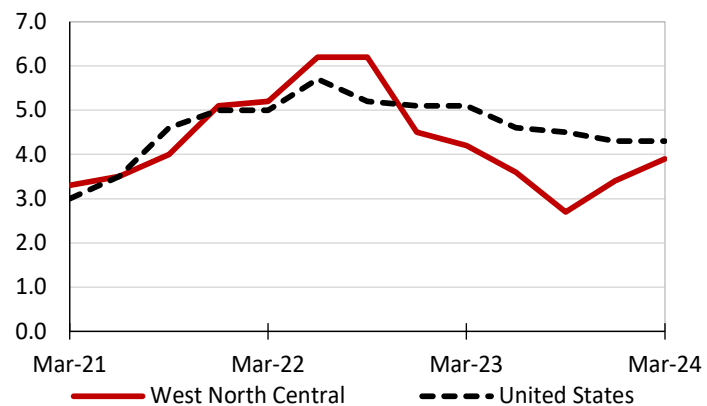
Private industry, March 2024	West North Central (1)	United States
Total compensation	\$39.02	\$43.78
Wages and salaries	27.09	30.76
Total benefits	11.94	13.02
Paid leave	2.77	3.31
Vacation	1.46	1.69
Supplemental pay	1.73	1.77
Insurance	3.39	3.20
Retirement and savings	1.20	1.52
Legally required benefits	2.85	3.21

(1) The states that compose the West North Central census division are: IA, KS, MN, MO, NE, ND, and SD.

Source: U.S. BLS, Employer Costs for Employee Compensation.

Over-the-year changes in wages and salaries

12-month percent changes in ECI



Source: U.S. BLS, Employment Cost Index.

