

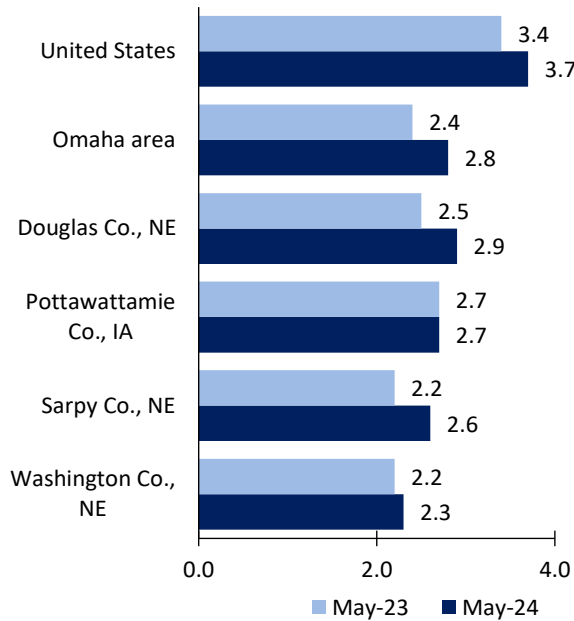
Omaha Area Economic Summary

Updated July 03, 2024

This summary presents a sampling of economic information for the area; supplemental data are provided for regions and the nation. Subjects include **unemployment, employment, wages, prices, spending, and benefits**. All data are not seasonally adjusted and some may be subject to revision. Area definitions may differ by subject. For more area summaries and geographic definitions, see www.bls.gov/regions/economic-summaries.htm.

Unemployment rates for the nation and selected areas

Unemployment rates

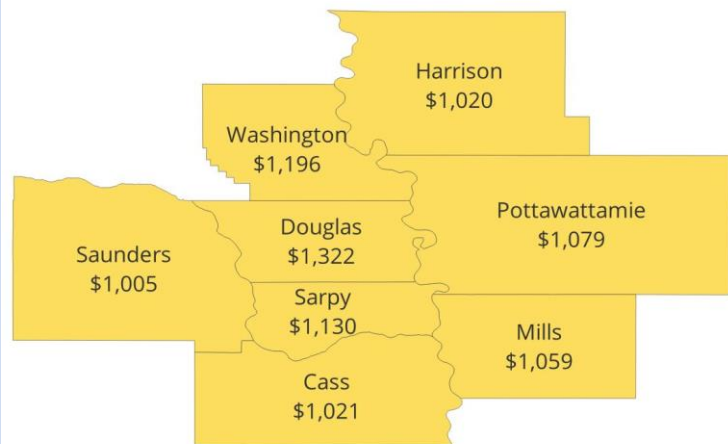


Source: U.S. BLS, Local Area Unemployment Statistics.

Average weekly wages for all industries by county

Omaha area, fourth quarter 2023

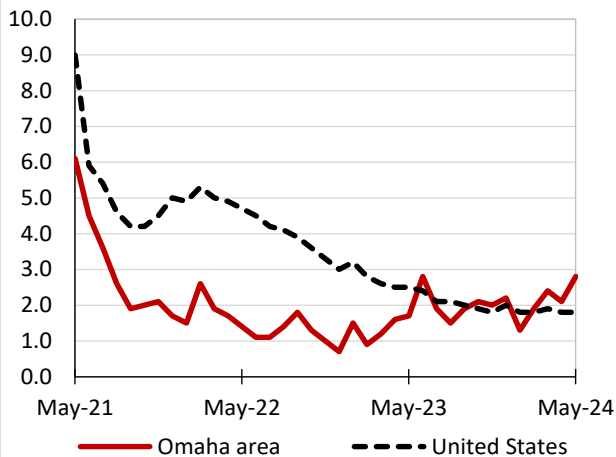
(U.S. = \$1,435; Area = \$1,257)



Source: U.S. BLS, Quarterly Census of Employment and Wages.

Over-the-year changes in employment on nonfarm payrolls and employment by major industry sector

12-month percent changes in employment



Source: U.S. BLS, Current Employment Statistics.

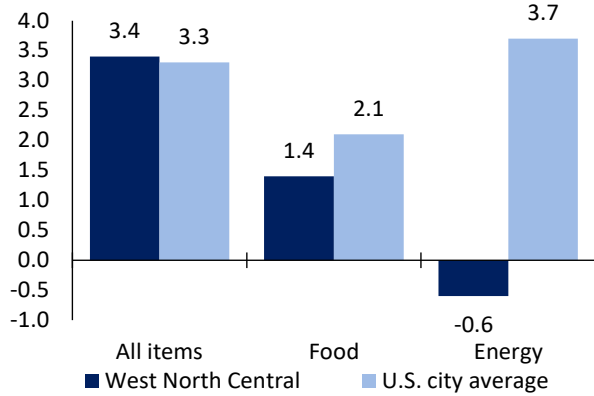
| Omaha area employment (number in thousands) | May 2024 | Change from May 2023 to May 2024 | |
|--|----------|----------------------------------|---------|
| | | Number | Percent |
| Total nonfarm | 523.4 | 14.5 | 2.8 |
| Mining, logging, and construction | 34.5 | 0.7 | 2.1 |
| Manufacturing | 36.8 | 1.2 | 3.4 |
| Trade, transportation, and utilities | 96.5 | 2.9 | 3.1 |
| Information | 9.4 | 0.2 | 2.2 |
| Financial activities | 37.9 | -1.6 | -4.1 |
| Professional and business services | 74.0 | -0.1 | -0.1 |
| Education and health services | 89.8 | 5.9 | 7.0 |
| Leisure and hospitality | 57.6 | 3.3 | 6.1 |
| Other services | 17.1 | 0.0 | 0.0 |
| Government | 69.8 | 2.0 | 2.9 |

Source: U.S. BLS, Current Employment Statistics.



Over-the-year change in the prices paid by urban consumers for selected categories

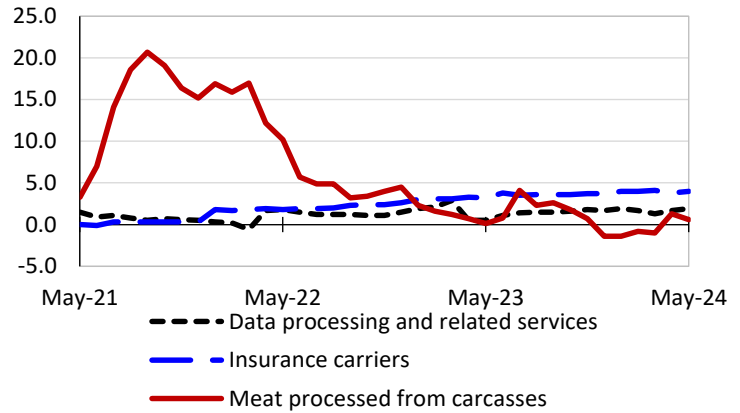
12-month percent change in CPI-U, May 2024



Source: U.S. BLS, Consumer Price Index.

Over-the-year changes in the selling prices received by producers for selected industries nationwide

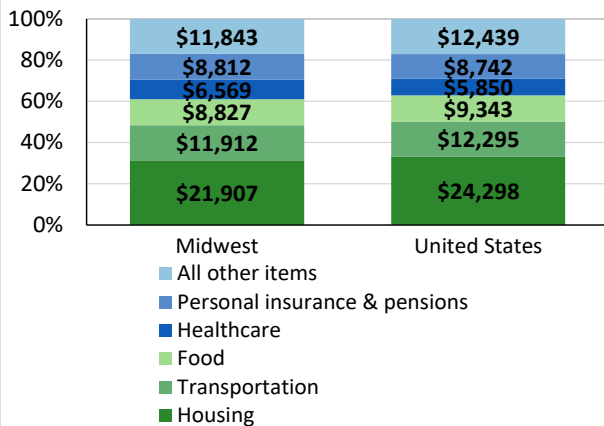
12-month percent changes in PPI



Source: U.S. BLS, Producer Price Index.

Average annual spending and percent distribution for selected categories

Average annual expenditures, United States and Midwest, 2022



Source: U.S. BLS, Consumer Expenditure Survey.

Average hourly wages for selected occupations

| Occupation | Omaha area | United States |
|---|------------|---------------|
| All occupations | \$29.34 | \$31.48 |
| Registered nurses | 39.29 | 45.42 |
| Compliance officers | 32.77 | 38.55 |
| Heavy and tractor-trailer truck drivers | 26.43 | 26.92 |
| Packaging and filling machine operators and tenders | 21.44 | 19.81 |
| Customer service representatives | 20.02 | 20.92 |
| Retail salespersons | 16.67 | 17.64 |

Source: U.S. BLS, Occupational Employment and Wage Statistics, May 2023.

Employer costs per hour worked for wages and selected employee benefits by geographic division

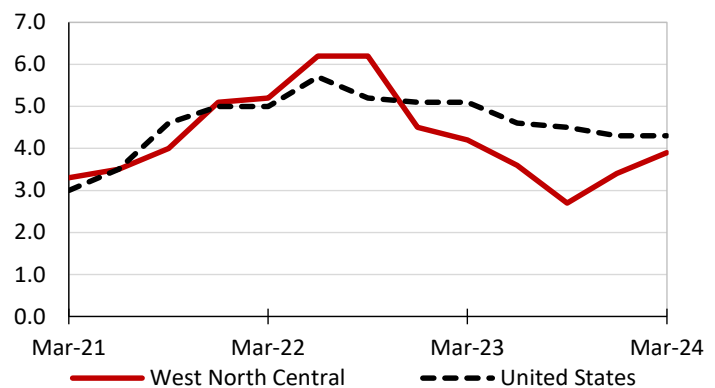
| Private industry, March 2024 | West North Central (1) | United States |
|------------------------------|------------------------|---------------|
| Total compensation | \$39.02 | \$43.78 |
| Wages and salaries | 27.09 | 30.76 |
| Total benefits | 11.94 | 13.02 |
| Paid leave | 2.77 | 3.31 |
| Vacation | 1.46 | 1.69 |
| Supplemental pay | 1.73 | 1.77 |
| Insurance | 3.39 | 3.20 |
| Retirement and savings | 1.20 | 1.52 |
| Legally required benefits | 2.85 | 3.21 |

(1) The states that compose the West North Central census division are: IA, KS, MN, MO, NE, ND, and SD.

Source: U.S. BLS, Employer Costs for Employee Compensation.

Over-the-year changes in wages and salaries

12-month percent changes in ECI



Source: U.S. BLS, Employment Cost Index.

