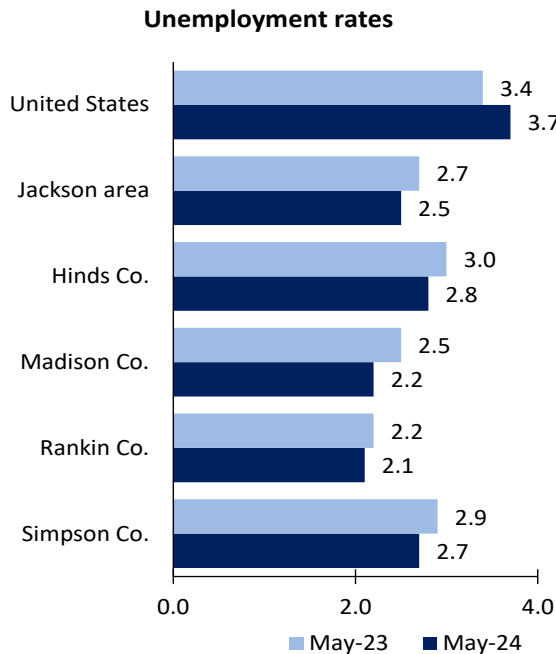


Jackson, MS, Area Economic Summary

Updated July 03, 2024

This summary presents a sampling of economic information for the area; supplemental data are provided for regions and the nation. Subjects include **unemployment, employment, wages, prices, spending, and benefits**. All data are not seasonally adjusted and some may be subject to revision. Area definitions may differ by subject. For more area summaries and geographic definitions, see www.bls.gov/regions/economic-summaries.htm.

Unemployment rates for the nation and selected areas

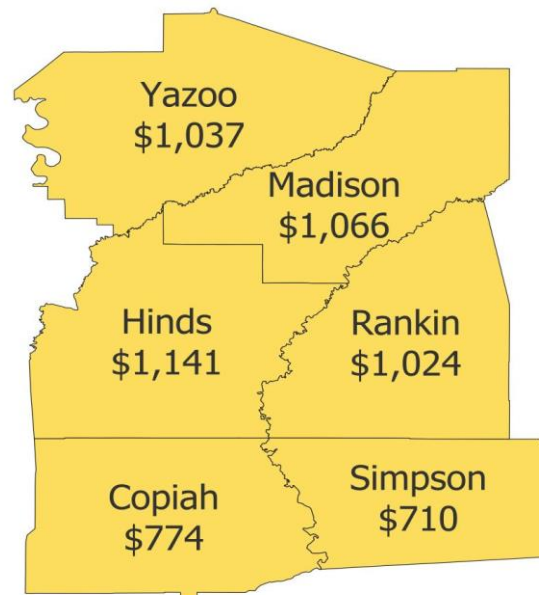


Source: U.S. BLS, Local Area Unemployment Statistics.

Average weekly wages for all industries by county

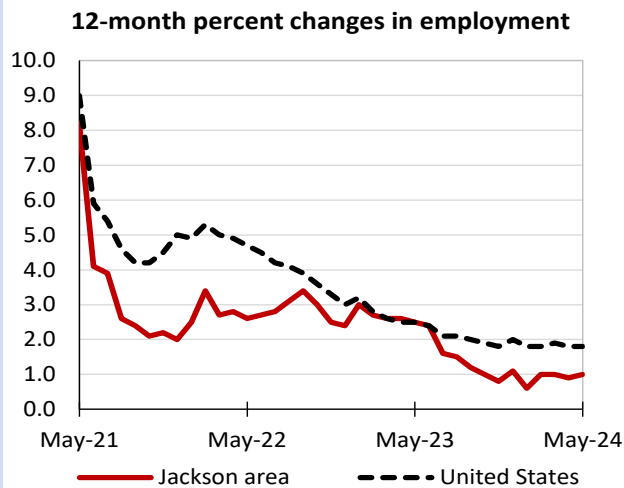
Jackson area, fourth quarter 2023

(U.S. = \$1,435; Area = \$1,068)



Source: U.S. BLS, Quarterly Census of Employment and Wages.

Over-the-year changes in employment on nonfarm payrolls and employment by major industry sector



Source: U.S. BLS, Current Employment Statistics.

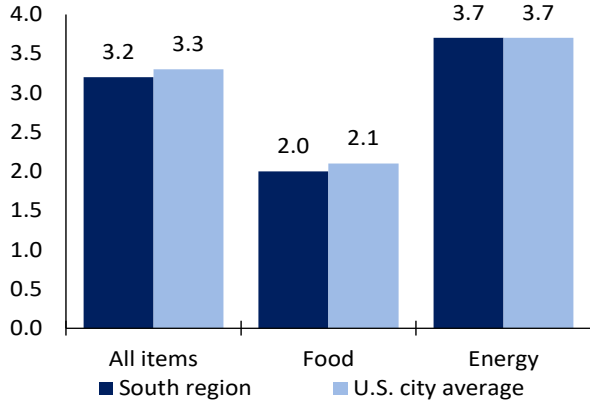
Jackson area employment (number in thousands)	May 2024	Change from May 2023 to May 2024	
		Number	Percent
Total nonfarm	285.4	2.8	1.0
Mining and logging	0.8	0.0	0.0
Construction	12.9	0.6	4.9
Manufacturing	19.3	0.3	1.6
Trade, transportation, and utilities	55.8	-0.4	-0.7
Information	2.7	-0.2	-6.9
Financial activities	15.8	-0.1	-0.6
Professional and business services	37.1	-1.0	-2.6
Education and health services	47.7	2.7	6.0
Leisure and hospitality	26.4	-0.5	-1.9
Other services	12.6	-0.1	-0.8
Government	54.3	1.5	2.8

Source: U.S. BLS, Current Employment Statistics.



Over-the-year change in the prices paid by urban consumers for selected categories

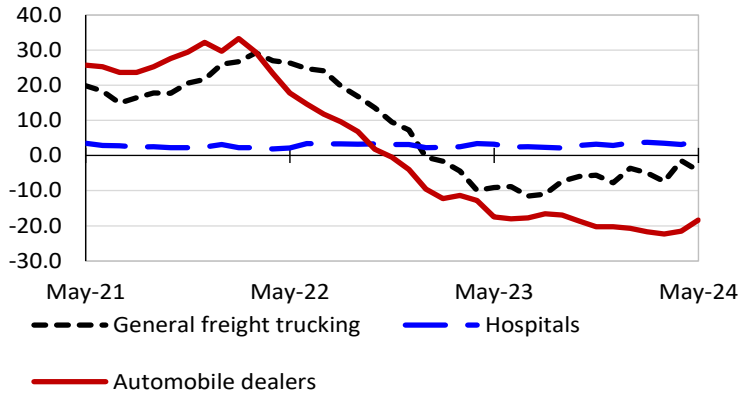
12-month percent change in CPI-U, May 2024



Source: U.S. BLS, Consumer Price Index.

Over-the-year changes in the selling prices received by producers for selected industries nationwide

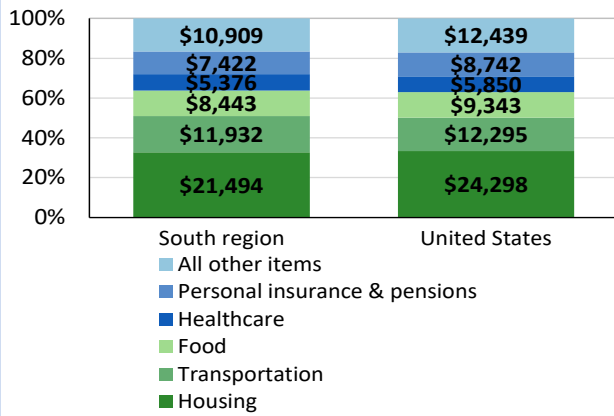
12-month percent changes in PPI



Source: U.S. BLS, Producer Price Index.

Average annual spending and percent distribution for selected categories

Average annual expenditures, United States and South region, 2022



Source: U.S. BLS, Consumer Expenditure Survey.

Average hourly wages for selected occupations

Occupation	Jackson area	United States
All occupations	\$24.51	\$31.48
General and operations managers	53.23	62.18
Registered nurses	38.93	45.42
Accountants and auditors	36.51	43.65
Heavy and tractor-trailer truck drivers	28.74	26.92
Construction laborers	18.18	23.69
Customer service representatives	17.55	20.92

Source: U.S. BLS, Occupational Employment and Wage Statistics, May 2023.

Employer costs per hour worked for wages and selected employee benefits by geographic division

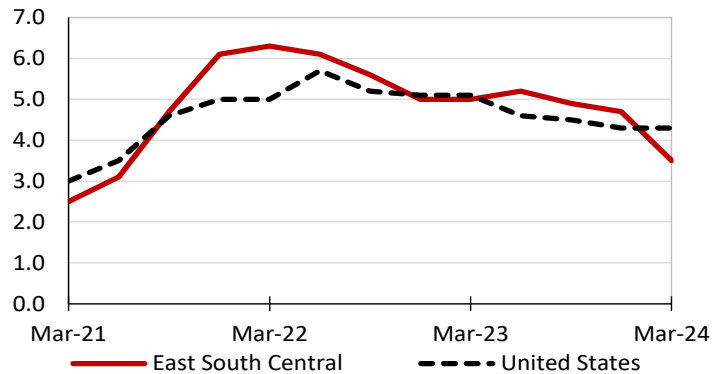
Private industry, March 2024	East South Central (1)	United States
Total compensation	\$32.17	\$43.78
Wages and salaries	23.19	30.76
Total benefits	8.99	13.02
Paid leave	2.08	3.31
Vacation	1.04	1.69
Supplemental pay	1.28	1.77
Insurance	2.48	3.20
Retirement and savings	0.82	1.52
Legally required benefits	2.33	3.21

(1) The states that compose the East South Central census division are: AL, KY, MS, and TN.

Source: U.S. BLS, Employer Costs for Employee Compensation.

Over-the-year changes in wages and salaries

12-month percent changes in ECI



Source: U.S. BLS, Employment Cost Index.