

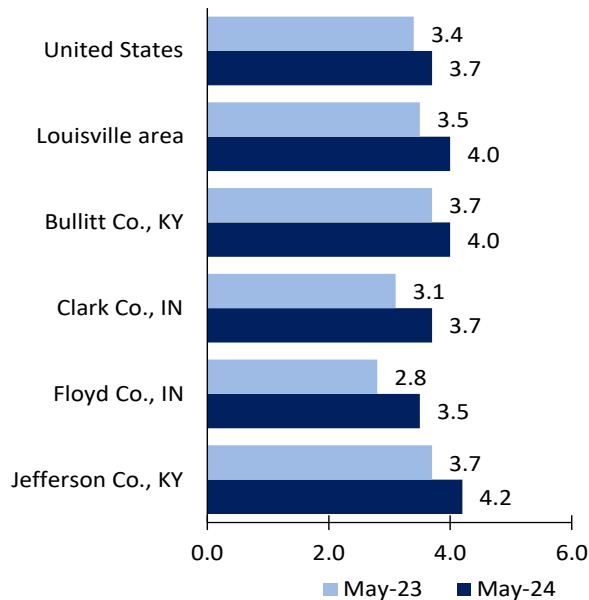
Louisville, KY-IN, Area Economic Summary

Updated July 03, 2024

This summary presents a sampling of economic information for the area; supplemental data are provided for regions and the nation. Subjects include **unemployment, employment, wages, prices, spending, and benefits**. All data are not seasonally adjusted and some may be subject to revision. Area definitions may differ by subject. For more area summaries and geographic definitions, see www.bls.gov/regions/economic-summaries.htm.

Unemployment rates for the nation and selected areas

Unemployment rates

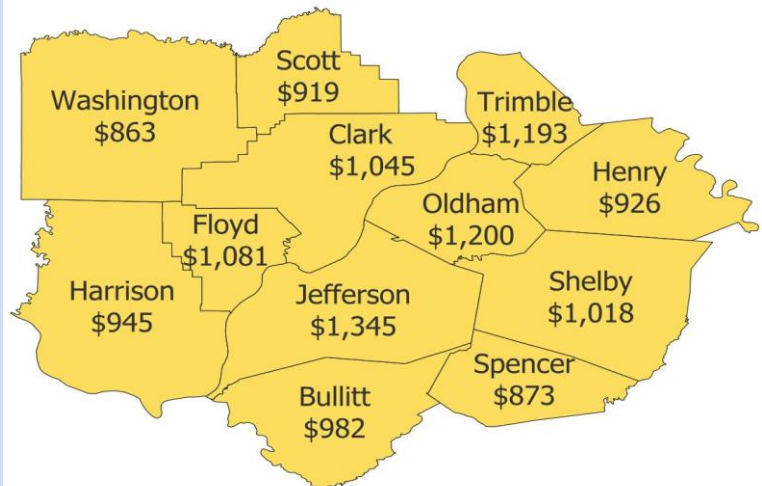


Source: U.S. BLS, Local Area Unemployment Statistics.

Average weekly wages for all industries by county

Louisville area, fourth quarter 2023

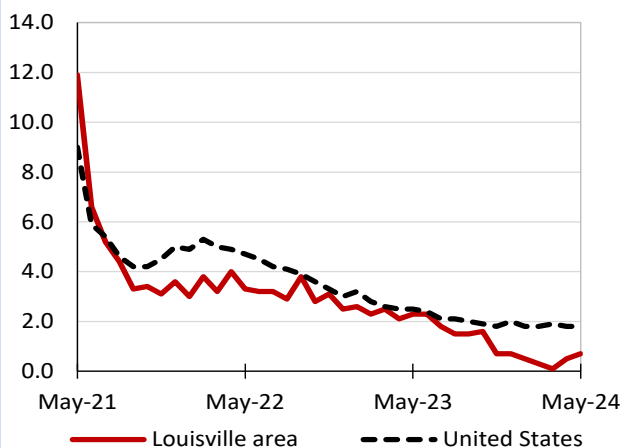
(U.S. = \$1,435; Area = \$1,259)



Source: U.S. BLS, Quarterly Census of Employment and Wages.

Over-the-year changes in employment on nonfarm payrolls and employment by major industry sector

12-month percent changes in employment



Source: U.S. BLS, Current Employment Statistics.

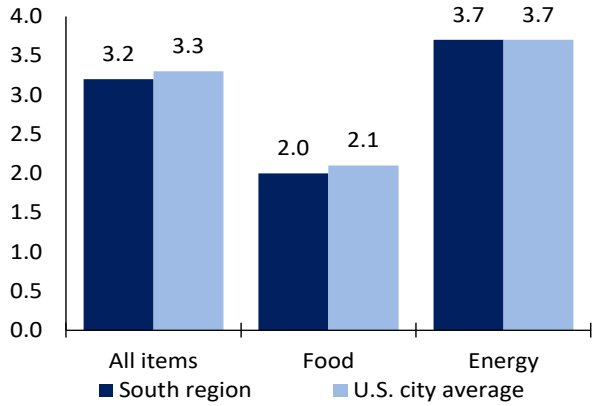
| Louisville area employment (number in thousands) | May 2024 | Change from May 2023 to May 2024 | |
|---|----------|----------------------------------|---------|
| | | Number | Percent |
| Total nonfarm | 702.0 | 5.1 | 0.7 |
| Mining, logging, and construction | 33.2 | 0.7 | 2.2 |
| Manufacturing | 81.0 | -1.7 | -2.1 |
| Trade, transportation, and utilities | 159.1 | -1.2 | -0.7 |
| Information | 8.5 | -0.5 | -5.6 |
| Financial activities | 46.6 | -0.8 | -1.7 |
| Professional and business services | 89.8 | 1.0 | 1.1 |
| Education and health services | 109.9 | 5.6 | 5.4 |
| Leisure and hospitality | 72.9 | 0.2 | 0.3 |
| Other services | 27.0 | 0.8 | 3.1 |
| Government | 74.0 | 1.0 | 1.4 |

Source: U.S. BLS, Current Employment Statistics.



Over-the-year change in the prices paid by urban consumers for selected categories

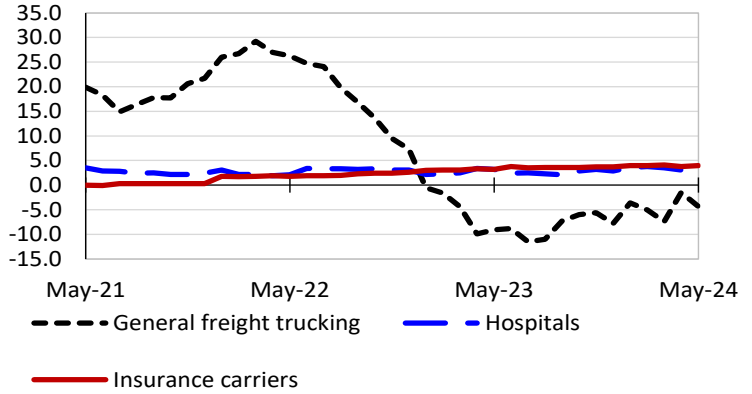
12-month percent change in CPI-U, May 2024



Source: U.S. BLS, Consumer Price Index.

Over-the-year changes in the selling prices received by producers for selected industries nationwide

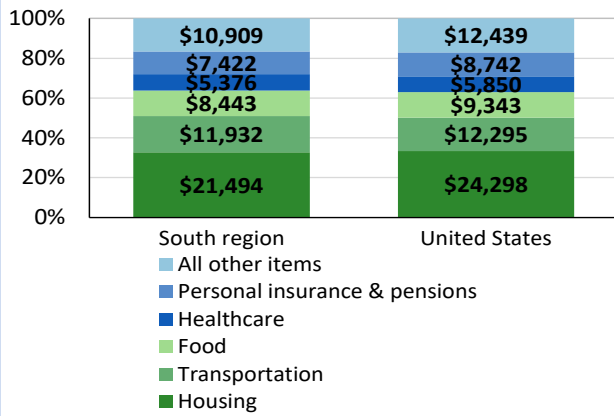
12-month percent changes in PPI



Source: U.S. BLS, Producer Price Index.

Average annual spending and percent distribution for selected categories

Average annual expenditures, United States and South region, 2022



Source: U.S. BLS, Consumer Expenditure Survey.

Average hourly wages for selected occupations

| Occupation | Louisville area | United States |
|--|-----------------|---------------|
| All occupations | \$27.87 | \$31.48 |
| General and operations managers | 51.82 | 62.18 |
| Registered nurses | 41.16 | 45.42 |
| Accountants and auditors | 37.91 | 43.65 |
| Cargo and freight agents | 23.01 | 25.22 |
| Construction laborers | 22.53 | 23.69 |
| Industrial truck and tractor operators | 22.34 | 21.98 |

Source: U.S. BLS, Occupational Employment and Wage Statistics, May 2023.

Employer costs per hour worked for wages and selected employee benefits by geographic division

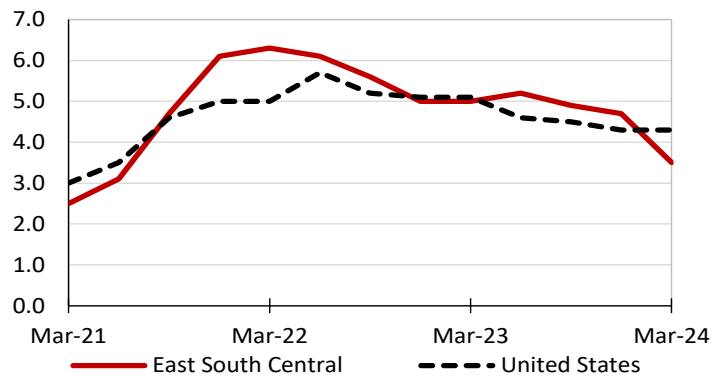
| Private industry, March 2024 | East South Central (1) | United States |
|------------------------------|------------------------|---------------|
| Total compensation | \$32.17 | \$43.78 |
| Wages and salaries | 23.19 | 30.76 |
| Total benefits | 8.99 | 13.02 |
| Paid leave | 2.08 | 3.31 |
| Vacation | 1.04 | 1.69 |
| Supplemental pay | 1.28 | 1.77 |
| Insurance | 2.48 | 3.20 |
| Retirement and savings | 0.82 | 1.52 |
| Legally required benefits | 2.33 | 3.21 |

(1) The states that compose the East South Central census division are: AL, KY, MS, and TN.

Source: U.S. BLS, Employer Costs for Employee Compensation.

Over-the-year changes in wages and salaries

12-month percent changes in ECI



Source: U.S. BLS, Employment Cost Index.