

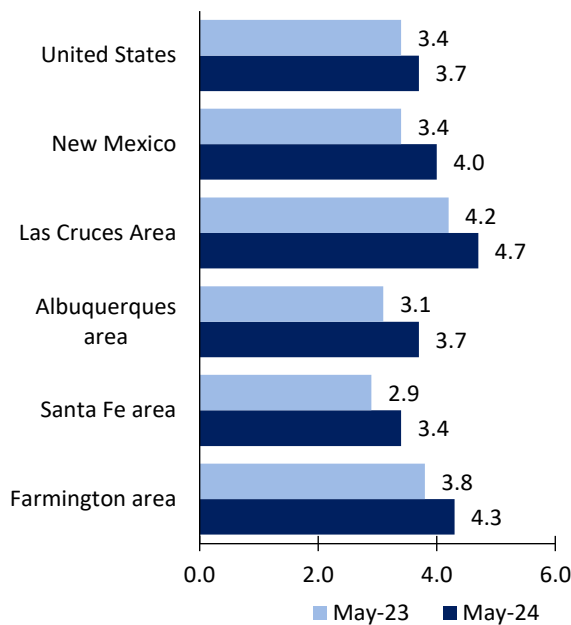
# Las Cruces Area Economic Summary

Updated July 05, 2024

This summary presents a sampling of economic information for the area; supplemental data are provided for regions and the nation. Subjects include **unemployment, employment, wages, prices, spending, and benefits**. All data are not seasonally adjusted and some may be subject to revision. Area definitions may differ by subject. For more area summaries and geographic definitions, see [www.bls.gov/regions/economic-summaries.htm](http://www.bls.gov/regions/economic-summaries.htm).

## Unemployment rates for the nation and selected areas

Unemployment rates

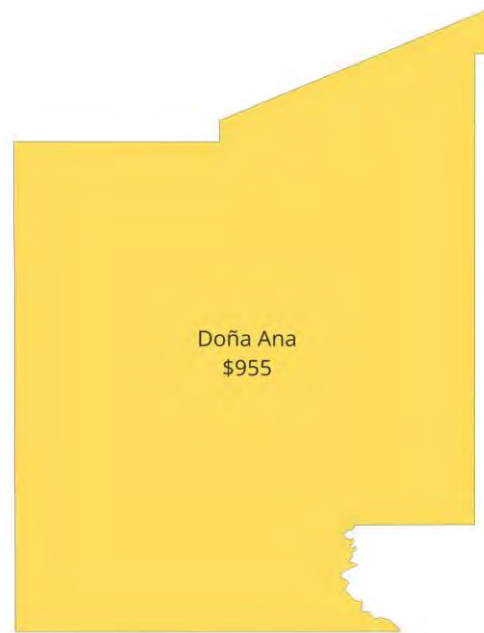


Source: U.S. BLS, Local Area Unemployment Statistics.

## Average weekly wages for all industries by county

### Las Cruces area, fourth quarter 2023

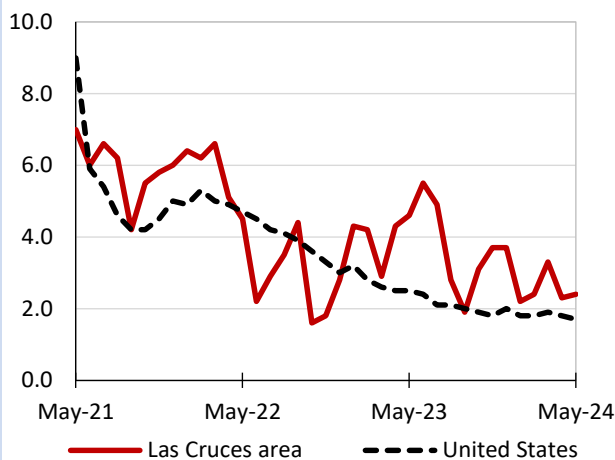
(U.S. = \$1,435; Area = \$955)



Source: U.S. BLS, Quarterly Census of Employment and Wages.

## Over-the-year changes in employment on nonfarm payrolls and employment by major industry sector

12-month percent changes in employment



Source: U.S. BLS, Current Employment Statistics.

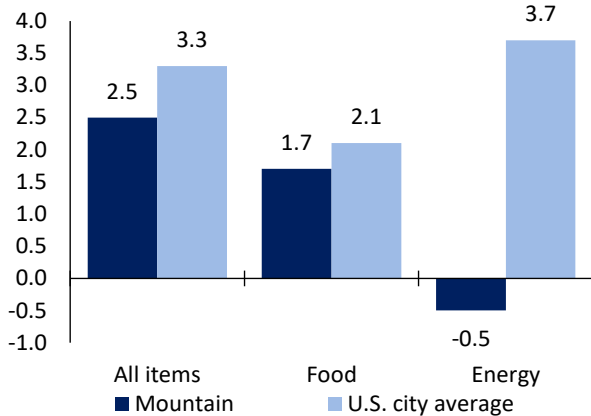
| Las Cruces area employment<br>(number in thousands) | May 2024 | Change from May 2023 to May 2024 |         |
|---|----------|----------------------------------|---------|
|   |          | Number                           | Percent |
| Total nonfarm                                       | 81.7     | 1.9                              | 2.4     |
| Mining, logging, and construction                   | 4.1      | 0.0                              | 0.0     |
| Manufacturing                                       | 3.5      | 0.2                              | 6.1     |
| Trade, transportation, and utilities                | 12.0     | -0.1                             | -0.8    |
| Information   | 0.6      | 0.0                              | 0.0     |
| Financial activities                                | 2.7      | 0.0                              | 0.0     |
| Professional and business services                  | 7.5      | 0.4                              | 5.6     |
| Education and health services                       | 17.8     | 0.1                              | 0.6     |
| Leisure and hospitality                             | 9.4      | 0.1                              | 1.1     |
| Other services                                      | 2.1      | 0.1                              | 5.0     |
| Government  | 22.0     | 1.1                              | 5.3     |

Source: U.S. BLS, Current Employment Statistics.



Over-the-year change in the prices paid by urban consumers for selected categories

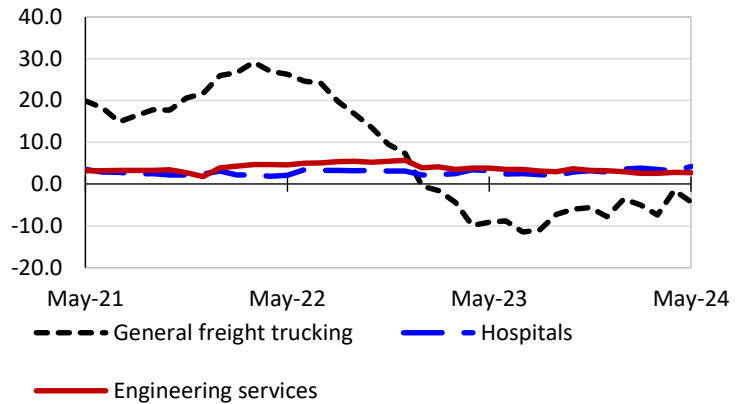
12-month percent change in CPI-U, May 2024



Source: U.S. BLS, Consumer Price Index.

Over-the-year changes in the selling prices received by producers for selected industries nationwide

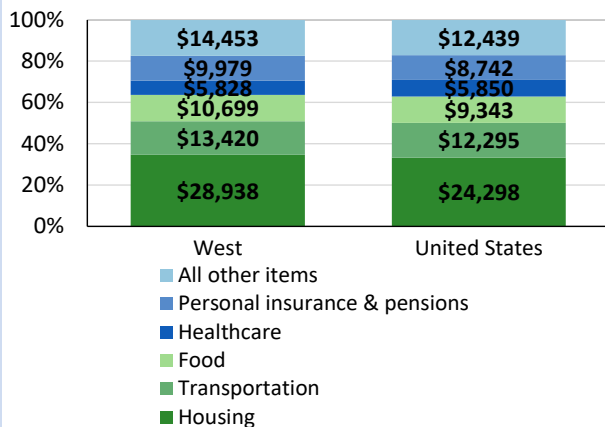
12-month percent changes in PPI



Source: U.S. BLS, Producer Price Index.

Average annual spending and percent distribution for selected categories

Average annual expenditures, United States and West, 2022



Source: U.S. BLS, Consumer Expenditure Survey.

Average hourly wages for selected occupations

| Occupation                  | Las Cruces area | United States |
|-----------------------------|-----------------|---------------|
| All occupations             | \$24.85         | \$31.48       |
| Registered nurses           | 39.88           | 45.42         |
| Accountants and auditors    | 33.25           | 43.65         |
| Human resources specialists | 27.78           | 36.57         |
| Construction laborers       | 17.82           | 23.69         |
| Retail salespersons         | 15.30           | 17.64         |
| Cooks, fast food            | 13.52           | 14.31         |

Source: U.S. BLS, Occupational Employment and Wage Statistics, May 2023.

Employer costs per hour worked for wages and selected employee benefits by geographic division

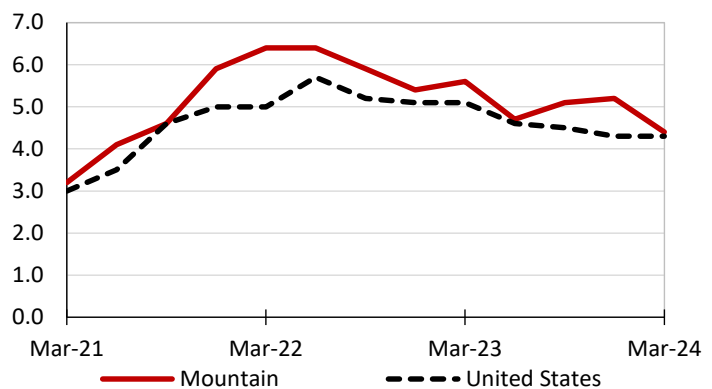
| Private industry, March 2024 | Mountain (1) | United States |
|------------------------------|--------------|---------------|
| Total compensation           | \$38.29      | \$43.78       |
| Wages and salaries           | 27.54        | 30.76         |
| Total benefits               | 10.76        | 13.02         |
| Paid leave                   | 2.65         | 3.31          |
| Vacation                     | 1.31         | 1.69          |
| Supplemental pay             | 1.42         | 1.77          |
| Insurance                    | 2.64         | 3.20          |
| Retirement and savings       | 1.13         | 1.52          |
| Legally required benefits    | 2.91         | 3.21          |

(1) The states that compose the Mountain census division are: AZ, CO, ID, MT, NV, NM, UT, and WY.

Source: U.S. BLS, Employer Costs for Employee Compensation.

Over-the-year changes in wages and salaries

12-month percent changes in ECI



Source: U.S. BLS, Employment Cost Index.

