

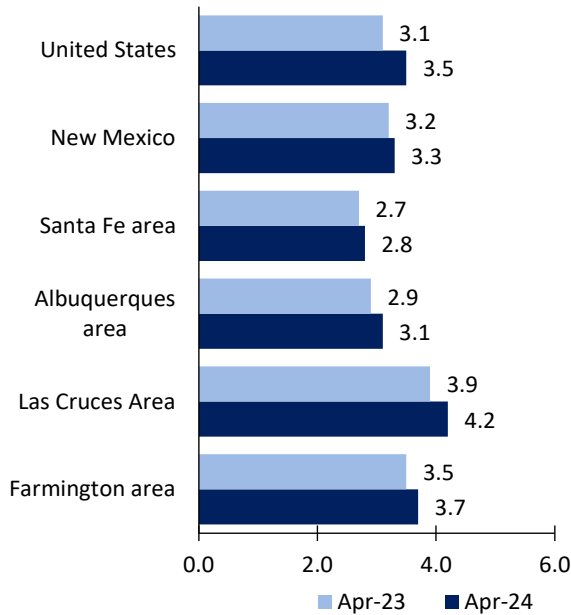
Santa Fe Area Economic Summary

Updated May 30, 2024

This summary presents a sampling of economic information for the area; supplemental data are provided for regions and the nation. Subjects include **unemployment, employment, wages, prices, spending, and benefits**. All data are not seasonally adjusted and some may be subject to revision. Area definitions may differ by subject. For more area summaries and geographic definitions, see www.bls.gov/regions/economic-summaries.htm.

Unemployment rates for the nation and selected areas

Unemployment rates

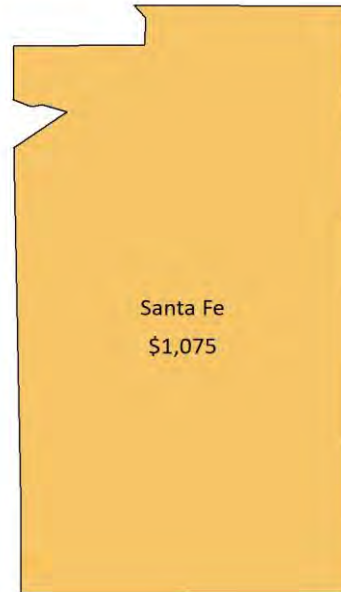


Source: U.S. BLS, Local Area Unemployment Statistics.

Average weekly wages for all industries by county

Santa Fe area, third quarter 2023

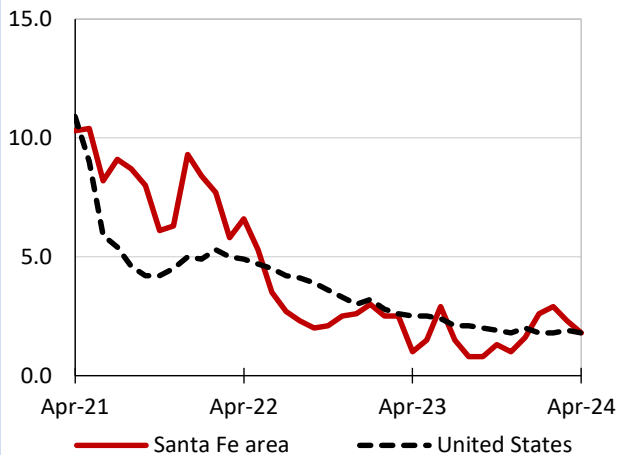
(U.S. = \$1,334; Area = \$1,075)



Source: U.S. BLS, Quarterly Census of Employment and Wages.

Over-the-year changes in employment on nonfarm payrolls and employment by major industry sector

12-month percent changes in employment



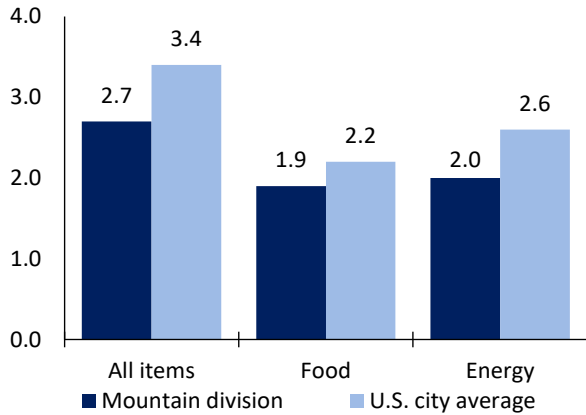
Source: U.S. BLS, Current Employment Statistics.

| Santa Fe area employment (number in thousands) | Apr. 2024 | Change from Apr. 2023 to Apr. 2024 | |
|---|-----------|------------------------------------|---------|
| | | Number | Percent |
| Total nonfarm | 63.3 | 1.1 | 1.8 |
| Mining, logging, and construction | 3.0 | -0.1 | -3.2 |
| Manufacturing | 0.9 | 0.1 | 12.5 |
| Trade, transportation, and utilities | 10.2 | 0.2 | 2.0 |
| Information | 0.8 | 0.0 | 0.0 |
| Financial activities | 2.3 | 0.0 | 0.0 |
| Professional and business services | 5.7 | -0.1 | -1.7 |
| Education and health services | 11.0 | 0.2 | 1.9 |
| Leisure and hospitality | 11.7 | 0.6 | 5.4 |
| Other services | 3.5 | 0.2 | 6.1 |
| Government | 14.2 | 0.0 | 0.0 |

Source: U.S. BLS, Current Employment Statistics.

Over-the-year change in the prices paid by urban consumers for selected categories

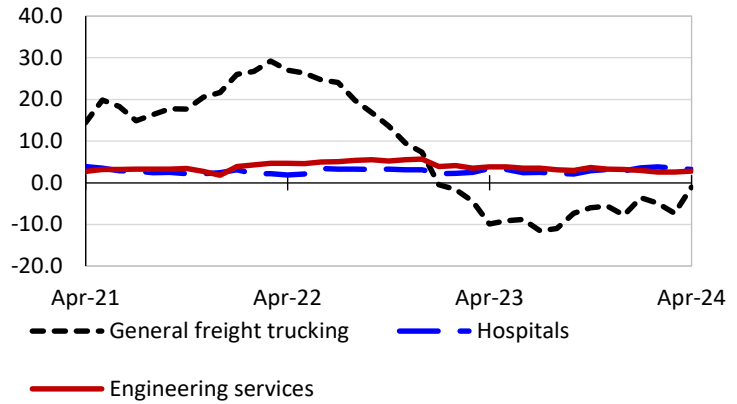
12-month percent change in CPI-U, April 2024



Source: U.S. BLS, Consumer Price Index.

Over-the-year changes in the selling prices received by producers for selected industries nationwide

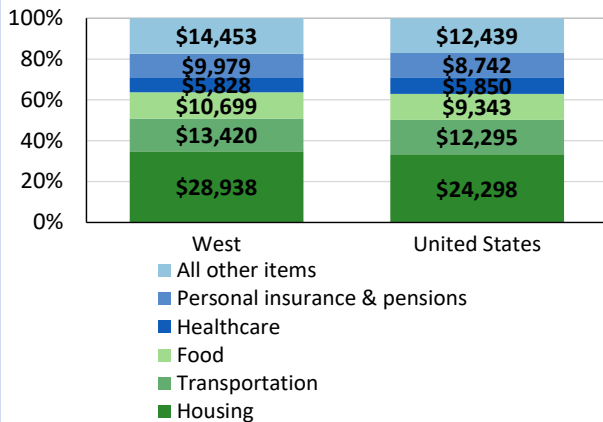
12-month percent changes in PPI



Source: U.S. BLS, Producer Price Index.

Average annual spending and percent distribution for selected categories

Average annual expenditures, United States and West, 2022



Source: U.S. BLS, Consumer Expenditure Survey.

Average hourly wages for selected occupations

| Occupation | Santa Fe area | United States |
|--------------------------|---------------|---------------|
| All occupations | \$27.31 | \$31.48 |
| Human resources managers | 51.82 | 74.39 |
| Registered nurses | 45.23 | 45.42 |
| Accountants and auditors | 35.25 | 43.65 |
| Construction laborers | 20.09 | 23.69 |
| Retail salespersons | 17.82 | 17.64 |
| Cooks, fast food | 14.88 | 14.31 |

Source: U.S. BLS, Occupational Employment and Wage Statistics, May 2023.

Employer costs per hour worked for wages and selected employee benefits by geographic division

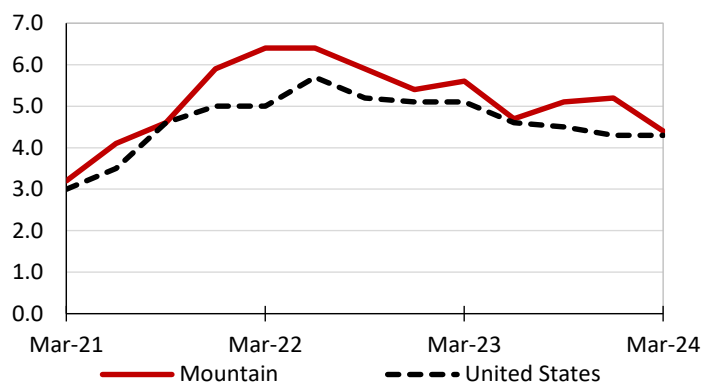
| Private industry, December 2023 | Mountain (1) | United States |
|---------------------------------|--------------|---------------|
| Total compensation | \$37.88 | \$43.11 |
| Wages and salaries | 27.24 | 30.33 |
| Total benefits | 10.64 | 12.77 |
| Paid leave | 2.62 | 3.26 |
| Vacation | 1.30 | 1.67 |
| Supplemental pay | 1.41 | 1.71 |
| Insurance | 2.59 | 3.14 |
| Retirement and savings | 1.15 | 1.50 |
| Legally required benefits | 2.87 | 3.17 |

(1) The states that compose the Mountain census division are: AZ, CO, ID, MT, NV, NM, UT, and WY.

Source: U.S. BLS, Employer Costs for Employee Compensation.

Over-the-year changes in wages and salaries

12-month percent changes in ECI



Source: U.S. BLS, Employment Cost Index.

