

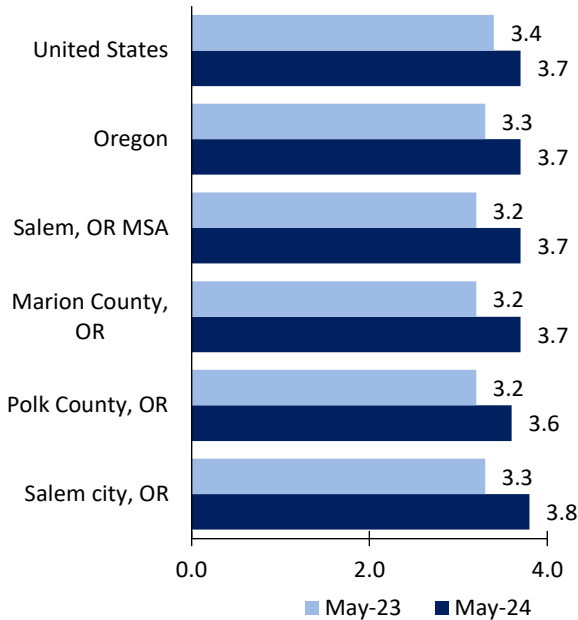
# Salem Area Economic Summary

Updated July 09, 2024

This summary presents a sampling of economic information for the area; supplemental data are provided for regions and the nation. Subjects include **unemployment, employment, wages, prices, spending, and benefits**. All data are not seasonally adjusted and some may be subject to revision. Area definitions may differ by subject. For more area summaries and geographic definitions, see [www.bls.gov/regions/economic-summaries.htm](http://www.bls.gov/regions/economic-summaries.htm).

## Unemployment rates for the nation and selected areas

Unemployment rates



Source: U.S. BLS, Local Area Unemployment Statistics.

## Average weekly wages for all industries by county

Salem, OR MSA, fourth quarter 2023

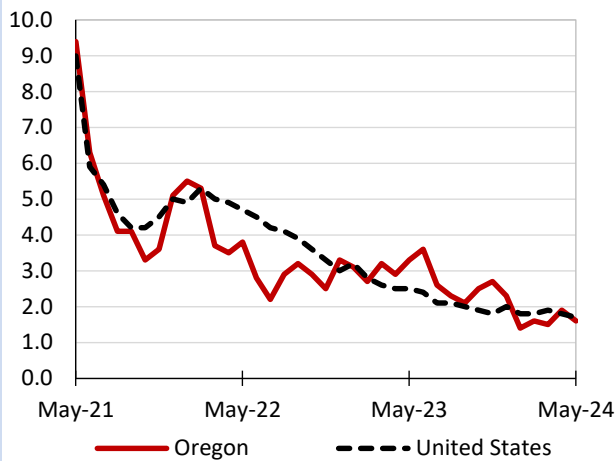
(U.S. = \$1,435; Area = \$1,090)



Source: U.S. BLS, Quarterly Census of Employment and Wages.

## Over-the-year changes in employment on nonfarm payrolls and employment by major industry sector

12-month percent changes in employment



Source: U.S. BLS, Current Employment Statistics.

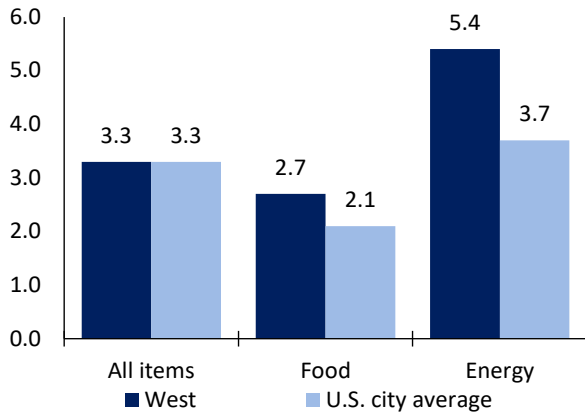
Oregon employment (number in thousands)	May 2024	Change from May 2023 to May 2024	
		Number	Percent
Total nonfarm	185.4	2.9	1.6
Mining and logging	0.6	0.0	0.0
Construction	13.3	-0.1	-0.7
Manufacturing	12.0	0.2	1.7
Trade, transportation, and utilities	29.5	-0.5	-1.7
Information	1.7	0.0	0.0
Financial activities	6.4	-0.2	-3.0
Professional and business services	18.7	0.9	5.1
Education and health services	35.6	1.7	5.0
Leisure and hospitality	16.2	0.1	0.6
Other services	5.5	-0.2	-3.5
Government	45.9	1.0	2.2

Source: U.S. BLS, Current Employment Statistics.



Over-the-year change in the prices paid by urban consumers for selected categories

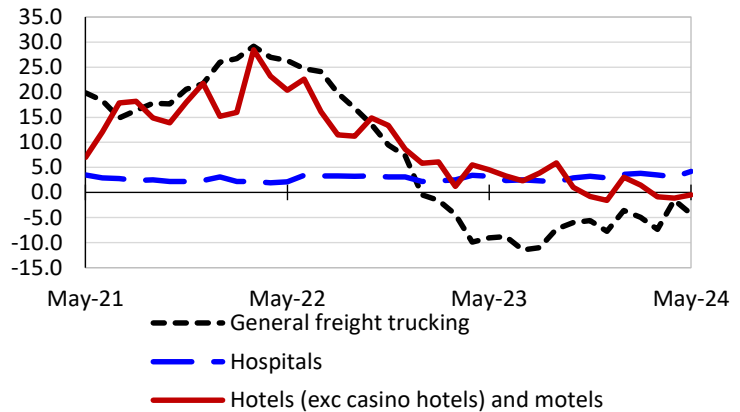
12-month percent change in CPI-U, May 2024



Source: U.S. BLS, Consumer Price Index.

Over-the-year changes in the selling prices received by producers for selected industries nationwide

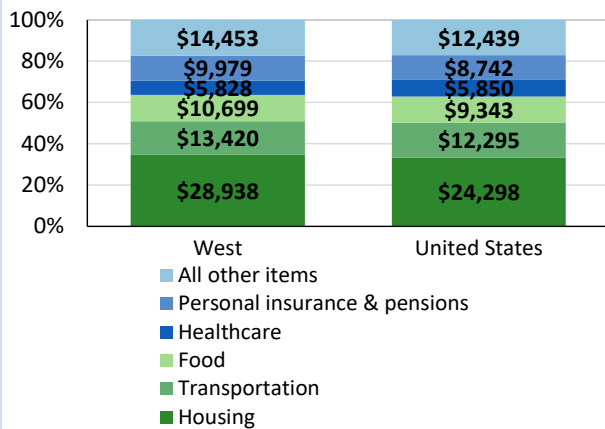
12-month percent changes in PPI



Source: U.S. BLS, Producer Price Index.

Average annual spending and percent distribution for selected categories

Average annual expenditures, United States and West, 2022



Source: U.S. BLS, Consumer Expenditure Survey.

Average hourly wages for selected occupations

Occupation	Salem, OR	United States
All occupations	\$30.08	\$31.48
Management analysts	44.90	55.54
Office clerks, general	21.28	20.94
Retail salespersons	18.28	17.64
Farmworkers and laborers, crop, nursery, and greenhouse	16.31	17.37
Cashiers	16.05	14.77
Fast food and counter workers	15.69	14.48

Source: U.S. BLS, Occupational Employment and Wage Statistics, May 2023.

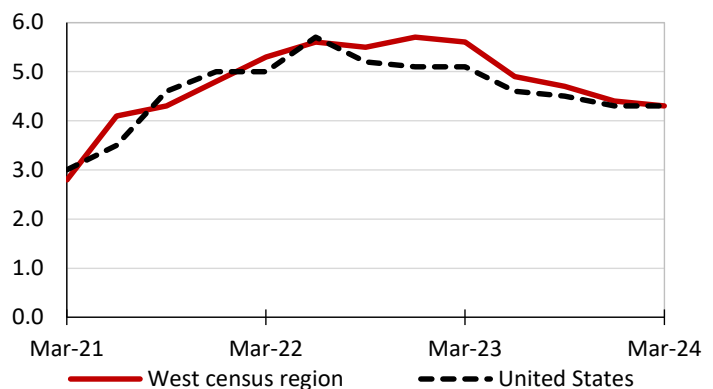
Employer costs per hour worked for wages and selected employee benefits by geographic division

Private industry, March 2024	West census region	United States
Total compensation	\$46.15	\$43.78
Wages and salaries	32.55	30.76
Total benefits	13.60	13.02
Paid leave	3.48	3.31
Vacation	1.73	1.69
Supplemental pay	1.79	1.77
Insurance	3.18	3.20
Retirement and savings	1.60	1.52
Legally required benefits	3.55	3.21

Source: U.S. BLS, Employer Costs for Employee Compensation.

Over-the-year changes in wages and salaries

12-month percent changes in ECI



Source: U.S. BLS, Employment Cost Index.

