

American Time Use Survey (ATUS) Data Dictionary:  
2009 Interview Data  
Variables collected in ATUS  
July 2010

## Important Information about the ATUS Data Dictionary

### Introduction

The American Time Use Survey (ATUS) is sponsored by the Bureau of Labor Statistics and conducted by the U.S. Census Bureau. The purpose of this document is to provide information about the variables available on five of the 2009 ATUS data files: the Respondent file, the Roster file, the Activity file, the Who file, and the Activity Summary file. These files contain information collected and assigned in the 2009 ATUS interviews.

This data dictionary lists all the variables available on these files and their valid values. It also provides directions on how to read the data dictionary.

Three additional data dictionaries describe other ATUS data files:

- 2009 ATUS-CPS Data Dictionary: Describes the variables available on the ATUS-CPS file as well as some variables on the Activity Summary file. The ATUS-CPS file contains data from the Current Population Survey (CPS) for persons selected to be surveyed for the ATUS and for members of their households. (The information on the ATUS-CPS file was collected two to five months before the ATUS interview and in some cases was out of date at the time the ATUS was conducted.)
- 2009 ATUS Survey Methodology Data Dictionary: Describes the variables available on the Case History file and the Call History file.
- 2009 Trips Data Dictionary: Describes the variables available on the Trips file.

These additional data dictionaries are available on the ATUS Web site at [www.bls.gov/tus/dictionaries.htm](http://www.bls.gov/tus/dictionaries.htm).

### ATUS Interview Data Files

The following five data files include data available from the ATUS interviews.

1. ATUS Respondent File

This file contains case-specific variables collected in ATUS (that is, variables for which there is one value for each respondent). These include, for example, labor force and earnings information, total time providing secondary childcare, and ATUS statistical weights.

There is one record for each ATUS respondent.

Below is a simplified example. The TUCASEID identifies each household, and TULINENO identifies each individual within the household. The example contains responses from five individuals; note that the respondent always has TULINENO=1. In the example, each respondent has corresponding values denoting school enrollment (TESCHENR), labor force status (TELFS), and total time spent alone (TRTALONE). The actual ATUS Respondent file contains many more variables as well as many more lines.

TUCASEID	TULINENO	TESCHENR	TELFS	TRTALONE
20090101020210	1	1	1	40
20090101020211	1	1	1	350
20090101020212	1	1	5	0
20090101020213	1	2	5	556
20090101020214	1	1	4	100

2. ATUS Roster File

This file contains information on the age, sex, and each household member's relationship to the ATUS respondent. The same information is also included for the respondent's own nonhousehold children under 18.

There is one record for each individual in the respondent's household (including the respondent's own nonhousehold children under 18).

A simplified example appears below. The TUCASEID identifies each household, and the TULINENO identifies each individual in the household. In the example below, TUCASEID 20090101020210 has three persons residing in the household, and TUCASEID 20090101020211 and TUCASEID 200901010120212 each have one person. The actual ATUS Roster file contains more variables and many additional lines.

TUCASEID	TULINENO	TERRP	TESEX	TEAGE
20090101020210	1	18	2	42
20090101020210	2	20	1	45
20090101020210	3	22	1	11
20090101020211	1	18	1	65
20090101020212	1	18	2	21

### 3. ATUS Activity File

This file includes activity-level information collected in ATUS, including activity code, location, duration, activity start and stop times, and whether respondents had a child under 13 in their care during the activity. Location (or "where") information is not collected for some selected activities (such as sleeping and grooming); a value that indicates the activity was "out of universe" for the "where" question (-1) is filled in these situations. There is one record for each activity.

A simplified example of the ATUS Activity file appears below. This is an illustration of one respondent's day. Because only one person is interviewed per household, each TUCASEID on the Activity file identifies a respondent. Each activity is identified by an activity number (TUACTIONITY\_N). The ATUS Activity file contains more variables describing each activity as well as many more lines than does the example below.

TUCASEID	TUACTIONITY_N	TUSTARTTIM	TUSTOPTIME
20090101020210	1	04:00:00	07:00:00
20090101020210	2	07:00:00	07:30:00
20090101020210	3	07:30:00	14:00:00
20090101020210	4	14:00:00	21:00:00
20090101020210	5	21:00:00	04:00:00

### 4. ATUS Who File

This file includes codes that indicate who was present during each activity.

There is one record for each "who" code reported. Therefore, there will be one record for activities done alone and multiple records for activities with multiple people present. For some activities, no "who" codes are collected (such as sleeping and grooming); a value that indicates the activity was "out of universe" for the "who" question (-1) is filled in these situations.

A simplified example appears below. In the first activity (TUACTIONITY\_N = 1), no "who" code information was collected because of the associated activity code. Only one person was with the respondent during the second activity, so there is one line for TUACTIONITY\_N = 2. Three people were with the respondent during the third activity, so there are three lines for TUACTIONITY\_N = 3. Two of those (TUWHO\_CODE = 20 and 22) are members of the respondent's household and can be linked to the Roster file using TUCASEID and TULINENO. The third (TUWHO\_CODE = 51) is not a member of the respondent's household and thus does not have a positive value for TULINENO.

The actual ATUS Who file contains more variables for each line as well as many additional lines than the example below.

TUCASEID	TUACTIVITY_N	TUWHO_CODE	TULINENO
20090101020210	1	-1	-1
20090101020210	2	22	3
20090101020210	3	20	2
20090101020210	3	22	3
20090101020210	3	51	-1

#### 5. ATUS Activity Summary File

The ATUS Activity Summary file contains information about the total number of minutes each respondent spent doing each activity. The file also includes selected variables from the ATUS Respondent, ATUS Roster, and ATUS-CPS files. **The Activity Summary file contains variables not described in this data dictionary. Variables beginning with a lower-case “t” correspond to specific activity codes; definitions for each activity code can be found in the 2009 Activity Lexicon ([www.bls.gov/tus/lexiconwex2009.pdf](http://www.bls.gov/tus/lexiconwex2009.pdf)).**

There is one record for each ATUS respondent.

A simplified example of the ATUS Activity Summary file appears below. The variable TUCASEID is the unique identifier for each respondent and the variable TEAGE, which also appears on the ATUS Roster file, shows each respondent's age. The variable t010101 contains the total number of minutes each respondent spent doing activity 010101, "sleeping"; the variable t010102 contains the total number of minutes each respondent spent doing activity 010102, "sleeplessness."

The ATUS Activity Summary file contains more variables describing each activity as well as many more lines than the example below.

TUCASEID	TEAGE	t010101	t010102
20090101020210	26	480	0
20090101020211	53	430	30
20090101020212	76	457	0
20090101020213	16	600	0

**Valid Values**

Each variable has a number of valid values or a range of valid values. For example, the variable TESEX has two valid values: 1 for male and 2 for female. The variable TEAGE, on the other hand, has a range of valid values – any entry between 0 and 85 (except 81 through 84) is considered valid. Individual valid values or a range of valid values are listed under each variable in the data dictionary. A few variables have so many valid values that they are not included in the data dictionary; instead, they are provided in an appendix or a separate document. (References to these are included as a “Note” under the relevant variables in the data dictionary.) One example of such a variable is TEIO1CD, which identifies the industry code of the respondent’s main job.

Many ATUS variables have the following possible valid values:

<b>Value</b>	<b>Description</b>
-1	Blank
-2	Don’t know
-3	Refused

Because so many variables have these possible values, they are not shown as valid entries for each variable.

TUCASEID, the primary identification number for ATUS, does not have either a list of valid values or a range of valid values.

## ATUS Naming Conventions and Definitions

ATUS variables are named according to specified rules. Variables with a first character of "T" (for time use) were collected or created through the ATUS interview. Variables with any other first character (most often "P", "G", or "H") were collected or created through the final CPS interview (conducted two to five months prior to the ATUS interview). All of the variables on the ATUS interview data files described in this dictionary begin with "T."

The second and third characters of the name identify the type of variable, and the remaining characters consist of a descriptive name. The rules regarding the first two or three characters are described in the table below (note that the variables on the Activity Summary file that start with a lowercase "t" do not follow these rules):

Abbreviation	Variable Type	Definition
U	Unedited Variable	An unedited variable generally is produced by the Computer Assisted Telephone Interview (CATI) instrument, either collected or assigned during the interview. There are a few unedited variables that are computed by the processing system, such as the ATUS final weight (TUFINLWGT).
E	Edited Variable	An edited variable is one that has gone through an editing process (a process checking for consistency). Values of edited variables are almost always equal to values of the corresponding unedited variables. Data differ when a value is allocated or imputed by the processing system based on allocation rules specified in CPS or ATUS processing. Allocations are typically performed when the unedited variable contains a value of blank, "don't know," or "refused."  An edited version of a variable exists only if that variable goes through an editing process. If there are no edits for a variable, then only an unedited version of that variable exists.
R	Recode	A recode is a variable calculated by the processing system from a combination of other variables on the file. For example, TRMJOCC1 is the major occupation code for the respondent's main job; this is not a response to a question but rather a variable that summarizes (or "groups") the more finely detailed occupation variable TEIO1OCD. (Note that variables with second and third characters of "RT" are summary variables.)
RT	Summary Variable	These variables summarize the amount of time respondents spent with other people or did selected activities. For example, TRTALONE gives the total amount of time the respondent spent alone on the diary day. Variables that summarize the amount of time respondents spent with other people rely on "who" code information and therefore do not include activities for which no "who" code information was collected, such as sleeping.
X	Allocation Flag	Each edited variable has a corresponding allocation flag indicating the nature of the allocation. For example, if TUAGE is blank, TEAGE would be allocated, and this would be indicated by a TXAGE value of 41. See the section on allocation flags for the standard list of values.
XT	Summary Allocation Flag	Some summary variables have a corresponding XT variable, which is a 0-1 indicator of whether or not the summary variable contains allocated information. For example, a value of 1 in TXTCC indicates that TRTCC and TRTCC_LN contain allocated rather than calculated data.
T	Topcode Flag	These variables indicate whether another variable has been topcoded, or given a maximum value. The three topcode variables on the ATUS interview data files all relate to earnings.

Using these rules, variables can be more readily understood based on their names. For example, the variable TEAGE can be broken down as follows:

- The first character “T” indicates that this variable was collected or created through the ATUS interviews
- The second character “E” indicates that this variable went through an editing process; it also means that there will be a corresponding allocation flag, TXAGE, to indicate the nature of the allocation
- The final part of the variable name, “AGE,” is descriptive

Some questions asked in the ATUS interview allow for more than one response. For such multiple entry questions, there is a separate variable for each possible response. Each variable has the same descriptive name but a different (sequential) number. For example, respondents can provide up to six answers to the question “You said you have been trying to find work – how did you go about looking?” The variable names are TULKDK1, TULKDK2, TULKDK3, etc.

Not all ATUS variables are on the files. When there is an edited variable, the corresponding unedited variable is usually omitted from the files. This is typically done to protect the confidentiality of ATUS respondents as required by law. If an unedited variable is included on the files, then an edited version does not exist and the unedited version cannot be used to identify individual respondents.

### Allocation Flags

For every edited variable (or all "E" variables), there is a corresponding allocation flag whose second character is "X." All remaining characters of the two variables' names are the same. For example, TXSEX is the allocation flag for TESEX.

All allocation flags (except for variables with the second and third characters of "XT") have the following list of possible values:

0	Value – no change
1	Blank – no change
2	Don't know – no change
3	Refused – no change
10	Value to value
11	Blank to value
12	Don't know to value
13	Refused to value
20	Value to longitudinal value
21	Blank to longitudinal value
22	Don't know to longitudinal value
23	Refused to longitudinal value
30	Value to allocated longitudinal value (unused)
31	Blank to allocated longitudinal value (unused)
32	Don't know to allocated longitudinal value (unused)
33	Refused to allocated longitudinal value (unused)
40	Value to allocated value
41	Blank to allocated value
42	Don't know to allocated value
43	Refused to allocated value
50	Value to blank
52	Don't know to blank
53	Refused to blank

Each digit of these valid values identifies how and why edited variables were allocated.

The first digit indicates how the allocation was made to the "E" (or edited) variable.

First Digit	
0 or Blank	No change between "U" variable and "E" variable
1	"E" variable changed to a value
2	"E" variable changed to a longitudinal value (the corresponding value from the CPS data)
3	"E" variable changed to an allocated longitudinal value (the corresponding allocated value from CPS data) - unused
4	"E" variable changed to allocated value
5	"E" variable changed to a blank

The second variable indicates why the "U" variable was allocated, whether the value was changed, missing, don't know, or refused.

Second Digit	
0	"U" variable was equal to some value
1	"U" variable was blank (or -1)
2	"U" variable was don't know (or -2)
3	"U" variable was refused (or -3)



Only one of the "X" allocation flags has more values than those listed above: TXAGE. There are two additional values to indicate that TEAGE has been topcoded or given a maximum value. These values are listed in the data dictionary.

Two other variables (TRWERNAL and TRHERNAL) indicate allocation and do not follow the "X" variable values; these variables have values of either 0 or 1, with 1 indicating that other variables (TRERNWA and TRERNHLY, respectively) have been allocated.

Additionally, the "XT" variables do not have the standard "X" variable values. Like the two variables indicated above, these variables all have values of either 0 or 1, with 1 indicating that another variable has been allocated.

### **Edited Universe**

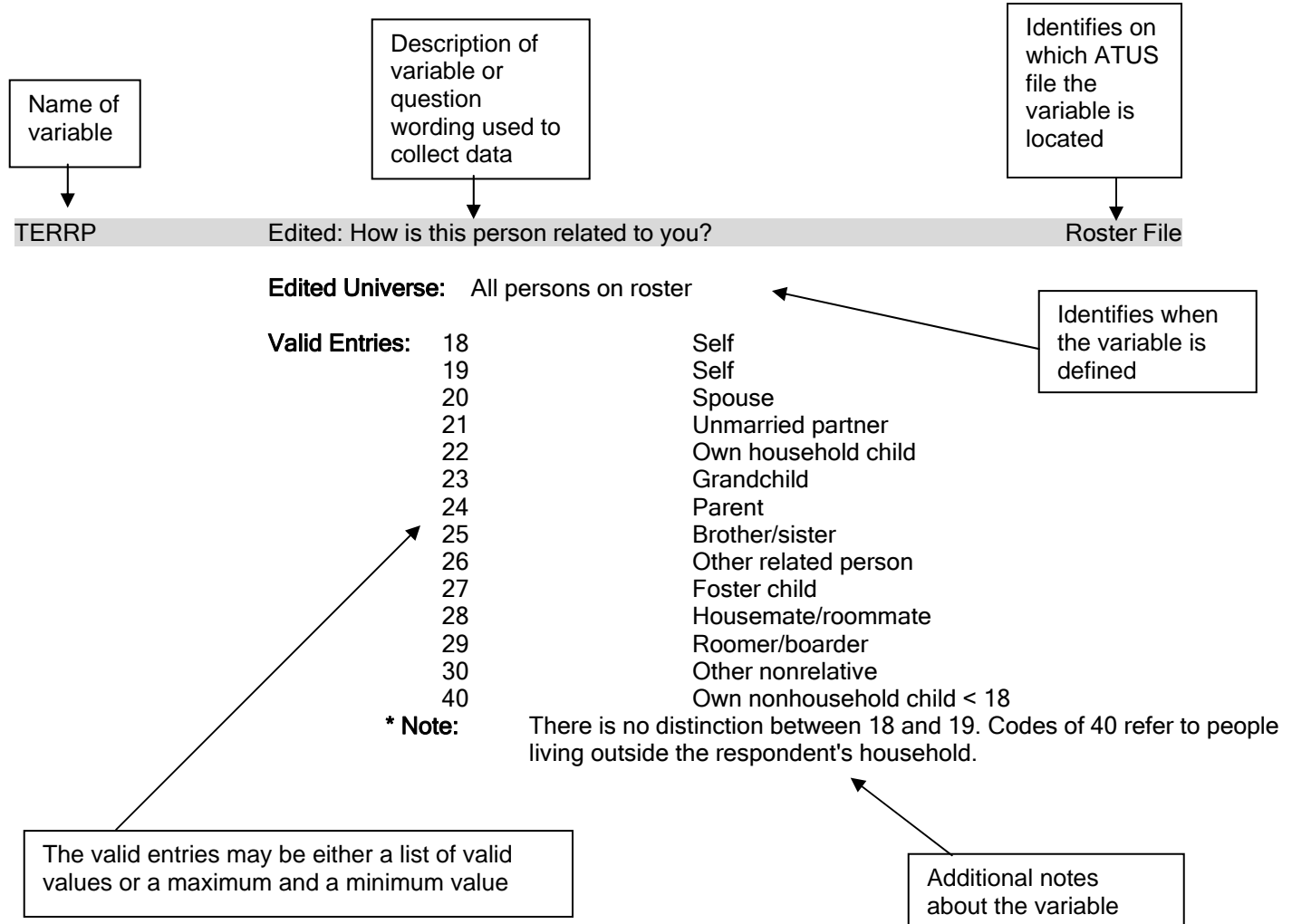
Edited variables and recodes are defined for certain universes, and these are listed in the data dictionary. For example, TEIO1OCD (occupation code) is only defined when the respondent is employed. Therefore, the universe for TEIO1OCD is TELFS = 1 or 2 (TELFS is the labor force status of the respondent, and values of 1 or 2 indicate that the respondent is employed).

Certain variables might initially appear to be the same because their descriptions are very similar. These variables are different in that they were asked of different groups of survey respondents. For example, the variables TEERNH1O and TEERNH2 both have the same question text of "Excluding overtime pay, tips, and commissions, what is your hourly rate of pay on your main job?" The difference in these two variables has to do with which respondents were asked each question. This can be determined by looking at the edited universes. TEERNH1O was asked of respondents with TEERNPER = 1, or those who said it was easiest to report their earnings hourly. TEERNH2, on the other hand, was asked of respondents with TEERNRT = 1, or those who said they were paid hourly but reported their earnings another way.

**Organization of the Data Dictionary**

Variables are listed in the data dictionary in alphabetical order.

Below is a sample entry from the ATUS interview data dictionary:



**Frequently Used Variables**

The ATUS files have many variables and users may sometimes have difficulty determining which variables to use. A list of the most commonly used ATUS variables is available at [www.bls.gov/tus/freqvariables.pdf](http://www.bls.gov/tus/freqvariables.pdf).

## Linking ATUS Files

Each of the ATUS files contains useful information, but in order to produce most estimates, the files must be linked. All of the files contain the variable TUCASEID, which is the ATUS identification number. Two other variables that can be used for linking in conjunction with TUCASEID are TULINENO (person line number) and TUACTIONITY\_N (activity line number). More information on linking ATUS files is available on the ATUS Web site at [www.bls.gov/tus/howto.htm#linking](http://www.bls.gov/tus/howto.htm#linking).

For information on linking ATUS files to CPS files, see Appendix K-L of the ATUS User's Guide ([www.bls.gov/tus/atususersguide.pdf](http://www.bls.gov/tus/atususersguide.pdf)).

## Changes between years of ATUS data

Those wishing to combine multiple years of ATUS data should be aware of changes to ATUS survey methods between years—such as new, discontinued, and changed variables—as well as differences in activity codes between years. For a list of these changes, see the document describing ATUS changes ([www.bls.gov/tus/changes.pdf](http://www.bls.gov/tus/changes.pdf)) and the document describing Activity Coding Lexicon changes ([www.bls.gov/tus/lexiconchanges.pdf](http://www.bls.gov/tus/lexiconchanges.pdf)).

## Combining multiple years of ATUS Data

The method used to generate statistical weights (the variable TUFINLWGT) on the ATUS files changed each year from 2003 to 2006. Thus, researchers who create multi-year data sets should not use the weighting variable TUFINLWGT for all years. There were no changes to the method used to generate TUFINLWGT in 2007, 2008 or 2009.

Users who combine multiple years of ATUS data must use weights that were generated using comparable methods. Coinciding with the release of the 2006 ATUS data, the variable TU06FWGT was added to the 2003 to 2005 Respondent and Activity summary files. TU06FWGT is a weighting variable that was generated using the 2006 weighting method. Users who combine ATUS data for the years 2003 to 2009 should use the variable TU06FWGT to weight the 2003 to 2005 data and the variable TUFINLWGT to weight the 2006 to 2009 data.

The variables TU04FWGT (on the 2003 files) and TUFINLWGT on the 2004 and 2005 files were also generated using comparable weighting methods. Researchers who combine the 2003 to 2005 data files can use this combination of weighting variables or the variable TU06FWGT for all years.

For more information about ATUS populations weights, why researchers should use them, and details about how the ATUS weighting method changed, see the ATUS User's Guide ([www.bls.gov/tus/atususersguide.pdf](http://www.bls.gov/tus/atususersguide.pdf)). For more information about combining activity codes between years, please see [www.bls.gov/tus/multiyearcodes.pdf](http://www.bls.gov/tus/multiyearcodes.pdf).

2009 ATUS Data Dictionary: Public ATUS Interview Data

Name	Description	File
TEABSRSN	Edited: what was the main reason you were absent from your job last week?	Respondent File
	<b>Edited Universe:</b> TELFS = 2	
	<b>Valid Entries:</b>	
	1 On layoff (temporary or indefinite)	
	2 Slack work/business conditions	
	3 Waiting for a new job to begin	
	4 Vacation/personal days	
	5 Own illness/injury/medical problems	
	6 Childcare problems	
	7 Other family/personal obligation	
	8 Maternity/paternity leave	
	9 Labor dispute	
	10 Weather affected job	
	11 School/training	
	12 Civic/military duty	
	13 Does not work in the business	
	14 Other	
TEAGE	Edited: age	Roster File, Activity Summary File
	<b>Edited Universe:</b> All persons on roster	
	<b>Valid Entries:</b> 0 Min Value	
	85 Max Value	
	<b>* Note:</b> TEAGE is topcoded to 85. All those age 80 through 84 have TEAGE = 80. Those age 85 or above have TEAGE = 85. TXAGE indicates topcoding.	
TEERN	Edited: total weekly overtime earnings (2 implied decimals)	Respondent File
	<b>Edited Universe:</b> TEERNUOT = 1 and TEERNPER = 1	
	<b>Valid Entries:</b> 0 Min Value	
	288461 Max Value	
TEERNH10	Edited: excluding overtime pay, tips, and commissions, what is your hourly rate of pay on your main job? (2 implied decimals)	Respondent File
	<b>Edited Universe:</b> TEERNPER = 1	
	<b>Valid Entries:</b> 0 Min Value	
	9999 Max Value	
TEERNH2	Edited: excluding overtime pay, tips, and commissions, what is your hourly rate of pay on your main job? (2 implied decimals)	Respondent File
	<b>Edited Universe:</b> TEERNRT = 1	
	<b>Valid Entries:</b> 0 Min Value	
	9999 Max Value	
TEERNHRO	Edited: how many hours do you usually work per week at this rate?	Respondent File
	<b>Edited Universe:</b> TEERNH10 >= 0	
	<b>Valid Entries:</b> 1 Min Value	
	99 Max Value	
TEERNHRY	Edited: hourly/non-hourly status	Respondent File

Name	Description	File
	<b>Edited Universe:</b> TELFS = 1 or 2 and TEIO1COW = 1 - 5  <b>Valid Entries:</b> 1 Paid hourly 2 Not paid hourly	
TEERNPER	Edited: for your main job, what is the easiest way for you to report your total earnings before taxes or other deductions: hourly, weekly, annually, or some other way?  <b>Edited Universe:</b> TELFS = 1 or 2 and TEIO1COW = 1 - 5  <b>Valid Entries:</b> 1 Hourly 2 Weekly 3 Bi-weekly 4 Twice monthly 5 Monthly 6 Annually 7 Other	Respondent File
TEERNRT	Edited: even though you told me it is easier to report your earnings another way, are you paid at an hourly rate on this job?  <b>Edited Universe:</b> TEERNPER = 2 - 7  <b>Valid Entries:</b> 1 Yes 2 No	Respondent File
TEERNUOT	Edited: do you usually receive overtime pay, tips, or commissions at your main job?  <b>Edited Universe:</b> TELFS = 1 or 2 and TEIO1COW = 1 - 5  <b>Valid Entries:</b> 1 Yes 2 No	Respondent File
TEERNWKP	Edited: how many weeks a year do you get paid?  <b>Edited Universe:</b> TEERNPER = 6  <b>Valid Entries:</b> 1 Min Value 52 Max Value	Respondent File
TEHRFTPT	Edited: do you usually work more than 35 hours per week at your job(s)/family business?  <b>Edited Universe:</b> TEHRUSL1 = -4 or TEHRUSL2 = -4  <b>Valid Entries:</b> 1 Yes 2 No 3 Hours vary	Respondent File
TEHRUSL1	Edited: how many hours per week do you usually work at your main job?  <b>Edited Universe:</b> TELFS = 1 or 2  <b>Valid Entries:</b> 0 Min Value 999 Max Value * <b>Note:</b> -4 (Hours vary) is also valid for TEHRUSL1	Respondent File
TEHRUSL2	Edited: how many hours per week do you usually work at your other job(s)?  <b>Edited Universe:</b> TELFS = 1 or 2 and TEMJOT = 1	Respondent File

Name	Description	File
	<b>Valid Entries:</b> 0 999 <b>* Note:</b> -4 (Hours vary) is also valid for TEHRUSL2	Min Value Max Value
TEHRUSLT	Edited: total hours usually worked per week (sum of TEHRUSL1 and TEHRUSL2)	Respondent File, Activity Summary File
	<b>Edited Universe:</b> TELFS = 1 or 2	
	<b>Valid Entries:</b> 0 999 <b>* Note:</b> -4 (Hours vary) is also valid for TEHRUSLT	Min Value Max Value
TEIO1COW	Edited: individual class of worker code (main job)	Respondent File
	<b>Edited Universe:</b> TELFS = 1 or 2	
	<b>Valid Entries:</b> 1 2 3 4 5 6 7 8	Government, federal Government, state Government, local Private, for profit Private, nonprofit Self-employed, incorporated Self-employed, unincorporated Without pay
TEIO1ICD	Edited: industry code (main job)	Respondent File
	<b>Edited Universe:</b> TELFS = 1 or 2	
	<b>Valid Entries:</b> 0 9999 <b>* Note:</b> Beginning with the January 2009 ATUS panel, industry data were classified using the 2007 Census Industry classification system. This system replaced the 2002 Census Industry Classification system.	Min Value Max Value
	Cases with [(TUYEAR=2009) and (TUCASEID = (2009011108xxxx, 2009011208xxxx, 2009021108xxxx, or 2009021208xxxx))] have industry data classified using the 2002 Census Industry Classification System. Refer to Appendix A for the list of 2002 Census Industry Classification codes.	
	All other cases with [TUYEAR = 2009] have industry data classified using the 2007 Census Industry Classification system. Refer to Appendix B for the list of 2007 Census Industry Classification codes.	
TEIO1OCD	Edited: occupation code (main job)	Respondent File
	<b>Edited Universe:</b> TELFS = 1 or 2	
	<b>Valid Entries:</b> 0 9999 <b>* Note:</b> Refer to Appendix A for a list of occupation codes	Min Value Max Value
TELAYAVL	Edited: could you have returned to work in the last seven days if you had been recalled?	Respondent File
	<b>Edited Universe:</b> TELFS = 3	
	<b>Valid Entries:</b> 1	Yes

Name	Description	File
	<b>Edited Universe:</b> TELFS = 3	
	<b>Valid Entries:</b> 2 No	
TELAYLK	Edited: even though you expect to be called back to work, have you been looking for work during the last four weeks?	Respondent File
	<b>Edited Universe:</b> TELAYAVL = 1 or 2	
	<b>Valid Entries:</b> 1 Yes 2 No	
TELFS	Edited: labor force status	Respondent File, Activity Summary File
	<b>Edited Universe:</b> All respondents	
	<b>Valid Entries:</b> 1 Employed - at work 2 Employed - absent 3 Unemployed - on layoff 4 Unemployed - looking 5 Not in labor force	
TELKAVL	Edited: could you have started a job in the last seven days if one had been offered?	Respondent File
	<b>Edited Universe:</b> TELKM1 = 1 - 13	
	<b>Valid Entries:</b> 1 Yes 2 No	
TELKM1	Edited: what are all of the things you have done to find work during the last 4 weeks? (first method)	Respondent File
	<b>Edited Universe:</b> TELFS = 4	
	<b>Valid Entries:</b> 1 Contacted employer directly/interview 2 Contacted public employment agency 3 Contacted private employment agency 4 Contacted friends or relatives 5 Contacted school/university employment center 6 Sent out resumes/filled out applications 7 Checked union/professional registers 8 Placed or answered ads 9 Other active 10 Looked at ads 11 Attended job training programs/courses 12 Nothing 13 Other passive	
	<b>* Note:</b> In order to research job search methods, users must combine all fields TELKM1, TULKM2 - TULKM6, TULKDK1 - TULKDK6, and TULKPS1 - TULKPS6	
TEMJOT	Edited: in the last seven days did you have more than one job?	Respondent File, Activity Summary File
	<b>Edited Universe:</b> TELFS = 1 or 2	
	<b>Valid Entries:</b> 1 Yes 2 No	
TERET1	Edited: do you currently want a job, either full or part time?	Respondent File

Name	Description	File
	<b>Edited Universe:</b> TELFS = 5 and (TURETOT = 1 or TUFABS = 3 or TUFWK = 3 or TULAY = 3) and TEAGE >= 50 <b>Valid Entries:</b> 1 Yes or maybe/it depends 2 No 3 Has a job	
TERRP	Edited: how is this person related to you?	Roster File
	<b>Edited Universe:</b> All persons on roster <b>Valid Entries:</b> 18 Self 19 Self 20 Spouse 21 Unmarried partner 22 Own household child 23 Grandchild 24 Parent 25 Brother/sister 26 Other relative 27 Foster child 28 Housemate/roommate 29 Roomer/boarder 30 Other nonrelative 40 Own nonhousehold child < 18 * <b>Note:</b> There is no distinction between 18 and 19. Codes of 40 refer to people living outside the respondent's household.	
TESCHENR	Edited: are you enrolled in high school, college, or university?	Respondent File, Activity Summary File
	<b>Edited Universe:</b> Respondents aged 15 to 49 <b>Valid Entries:</b> 1 Yes 2 No	
TESCHFT	Edited: are you enrolled as a full-time or part-time student?	Respondent File
	<b>Edited Universe:</b> TESCHENR = 1 <b>Valid Entries:</b> 1 Full time 2 Part time	
TESCHLVL	Edited: would that be high school, college, or university?	Respondent File, Activity Summary File
	<b>Edited Universe:</b> TESCHENR = 1 <b>Valid Entries:</b> 1 High school 2 College or university	
TESEX	Edited: sex	Roster File, Activity Summary File
	<b>Edited Universe:</b> All persons on roster <b>Valid Entries:</b> 1 Male 2 Female	



Name	Description	File
TESPEMPNOT	Edited: employment status of spouse or unmarried partner	Respondent File, Activity Summary File
	<b>Edited Universe:</b> TRSPPRES = 1 or 2	
	<b>Valid Entries:</b> 1            Employed 2            Not employed	
TESPUHRS	Edited: usual hours of work of spouse or unmarried partner	Respondent File
	<b>Edited Universe:</b> TESPEMPNOT = 1	
	<b>Valid Entries:</b> 0                            Min Value 99    Max Value	
	<b>* Note:</b> -4 (Hours vary) is also valid for TESPUIHRS	
TEWHERE	Edited: where were you during the activity?	Activity File
	<b>Edited Universe:</b> All activities (except those noted below)	
	<b>Valid Entries:</b> 1            Respondent's home or yard 2            Respondent's workplace 3            Someone else's home 4            Restaurant or bar 5            Place of worship 6            Grocery store 7            Other store/mall 8            School 9            Outdoors away from home 10           Library 11           Other place 12           Car, truck, or motorcycle (driver) 13           Car, truck, or motorcycle (passenger) 14           Walking 15           Bus 16           Subway/train 17           Bicycle 18           Boat/ferry 19           Taxi/limousine service 20           Airplane 21           Other mode of transportation 30           Bank 31           Gym/health club 32           Post Office 89           Unspecified place 99           Unspecified mode of transportation	
	<b>* Note:</b> Not collected for activities with activity codes of 0101xx, 0102xx, 0104xx, 500105, or 500106.	
TRCHILDNUM	Number of household children < 18	Respondent File, Activity Summary File
	<b>Edited Universe:</b> All respondents	
	<b>Valid Entries:</b> 0                            Min Value 30    Max Value	

Name	Description	File
TRCODE	Six digit activity code	Activity File
	<b>Edited Universe:</b> All activities	
	<b>* Note:</b> This variable includes information from TUTIER1CODE, TUTIER2CODE, and TUTIER3CODE.	
TRDPFTPT	Full time or part time employment status of respondent	Respondent File, Activity Summary File
	<b>Edited Universe:</b> TELFS = 1 or 2	
	<b>Valid Entries:</b>	
	1	Full time
	2	Part time
TRDTIND1	Detailed industry recode (main job)	Respondent File
	<b>Edited Universe:</b> TELFS = 1 or 2	
	<b>Valid Entries:</b>	
	1	Min Value
	51	Max Value
	<b>* Note:</b> Beginning with the January 2009 ATUS panel, industry data were classified using the 2007 Census Industry classification system. This system replaced the 2002 Census Industry Classification system.	
	Cases with [(TUYEAR=2009) and (TUCASEID = (2009011108xxxx, 2009011208xxxx, 2009021108xxxx, or 2009021208xxxx))] have industry data recodes generated using the 2002 Census Industry Classification System. Refer to Appendix A for the list of 2002 Census Industry Classification codes.	
	All other cases with [TUYEAR = 2009] have industry data recodes generated using the 2007 Census Industry Classification system. Refer to Appendix B for the list of 2007 Census Industry Classification codes.	
TRDTOCC1	Detailed occupation recode (main job)	Respondent File
	<b>Edited Universe:</b> TELFS = 1 or 2	
	<b>Valid Entries:</b>	
	1	Management occupations
	2	Business and financial operations occupations
	3	Computer and mathematical science occupations
	4	Architecture and engineering occupations
	5	Life, physical, and social science occupations
	6	Community and social service occupations
	7	Legal occupations
	8	Education, training, and library occupations
	9	Arts, design, entertainment, sports, and media occupations
	10	Healthcare practitioner and technical occupations
	11	Healthcare support occupations
	12	Protective service occupations
	13	Food preparation and serving related occupations
	14	Building and grounds cleaning and maintenance occupations
	15	Personal care and service occupations
	16	Sales and related occupations
	17	Office and administrative support occupations
	18	Farming, fishing, and forestry occupations

Name	Description	File
	<b>Valid Entries:</b> 19 Construction and extraction occupations 20 Installation, maintenance, and repair occupations 21 Production occupations 22 Transportation and material moving occupations	
TRERNHLY	Hourly earnings (2 implied decimals)	Respondent File
	<b>Edited Universe:</b> TEERNHRY = 1  <b>Valid Entries:</b> 0 Min Value 9999 Max Value <b>* Note:</b> This is the most-frequently used hourly earnings variable in ATUS and is only defined for employed persons who say they work hourly and are not self-employed or without pay. The allocation flag for this variable is TRHERNAL. Subject to topcoding based on the entry in TEERNHRO such that TEERNHRO x TRERNHLY <= 2884.61; topcoding is indicated in TTHR.	
TRERNUPD	Earnings update flag	Respondent File
	<b>Edited Universe:</b> TELFS = 1 or 2 and TEIO1COW = 1 - 5  <b>Valid Entries:</b> 0 Earnings carried forward from final CPS interview 1 Earnings updated in ATUS	
TRERNWA	Weekly earnings (2 implied decimals)	Respondent File, Activity Summary File
	<b>Edited Universe:</b> TELFS = 1 or 2 and TEIO1COW = 1 - 5  <b>Valid Entries:</b> 0 Min Value 288461 Max Value <b>* Note:</b> This is the most-frequently used earnings variable in ATUS and is defined for all employed persons who are not self-employed or without pay. The allocation flag for this variable is TRWERNAL. Subject to topcoding (the maximum value cannot be greater than 2884.61); topcoding is indicated in TTOT, TTWK, and TTHR.	
TRHERNAL	TRERNHLY: allocation flag	Respondent File
	<b>Edited Universe:</b> TEERNHRY = 1  <b>Valid Entries:</b> 0 TRERNHLY does not contain allocated information 1 TRERNHLY contains allocated information	
TRHHCHILD	Presence of household children < 18	Respondent File
	<b>Edited Universe:</b> All respondents  <b>Valid Entries:</b> 1 Yes 2 No	
TRHOLIDAY	Flag to indicate if diary day was a holiday	Respondent File, Activity Summary File
	<b>Edited Universe:</b> All respondents  <b>Valid Entries:</b> 0 Diary day was not a holiday 1 Diary day was a holiday <b>* Note:</b> New Year's Day, Easter, Memorial Day, the Fourth of July, Labor Day, Thanksgiving Day, and Christmas Day are identified as holidays.	
TRIMIND1	Intermediate industry recode (main job)	Respondent File

Name	Description	File
	<b>Edited Universe:</b> TELFS = 1 or 2	
	<b>Valid Entries:</b>	
	1 Agriculture, forestry, fishing, and hunting	
	2 Mining	
	3 Construction	
	4 Manufacturing - durable goods	
	5 Manufacturing - non-durable goods	
	6 Wholesale trade	
	7 Retail trade	
	8 Transportation and warehousing	
	9 Utilities	
	10 Information	
	11 Finance and insurance	
	12 Real estate and rental and leasing	
	13 Professional and technical services	
	14 Management, administrative and waste management services	
	15 Educational services	
	16 Health care and social services	
	17 Arts, entertainment, and recreation	
	18 Accommodation and food services	
	19 Private households	
	20 Other services, except private households	
	21 Public administration	
TRMJIND1	Major industry recode (main job)	Respondent File
	<b>Edited Universe:</b> TELFS = 1 or 2	
	<b>Valid Entries:</b>	
	1 Agriculture, forestry, fishing, and hunting	
	2 Mining	
	3 Construction	
	4 Manufacturing	
	5 Wholesale and retail trade	
	6 Transportation and utilities	
	7 Information	
	8 Financial activities	
	9 Professional and business services	
	10 Educational and health services	
	11 Leisure and hospitality	
	12 Other services	
	13 Public administration	
TRMJOCC1	Major occupation recode (main job)	Respondent File
	<b>Edited Universe:</b> TELFS = 1 or 2	
	<b>Valid Entries:</b>	
	1 Management, business, and financial occupations	
	2 Professional and related occupations	
	3 Service occupations	
	4 Sales and related occupations	
	5 Office and administrative support occupations	
	6 Farming, fishing, and forestry occupations	
	7 Construction and extraction occupations	
	8 Installation, maintenance, and repair occupations	
	9 Production occupations	

Name	Description	File
	<b>Edited Universe:</b> TELFS = 1 or 2	
	<b>Valid Entries:</b> 10      Transportation and material moving occupations	
TRMJOCGR	Major occupation category (main job)	Respondent File
	<b>Edited Universe:</b> TELFS = 1 or 2	
	<b>Valid Entries:</b> 1      Management, professional, and related occupations	
	2      Service occupations	
	3      Sales and office occupations	
	4      Farming, fishing, and forestry occupations	
	5      Construction and maintenance occupations	
	6      Production, transportation, and material moving occupations	
TRHHCHILD	Presence of own non-household child < 18	Respondent File
	<b>Edited Universe:</b> All respondents	
	<b>Valid Entries:</b> 1      Yes	
	2      No	
TRNUMHOU	Number of people living in respondent's household	Respondent File
	<b>Edited Universe:</b> All respondents	
	<b>Valid Entries:</b> 1      Min Value	
	30      Max Value	
TROHHCHILD	Presence of own household children < 18	Respondent File
	<b>Edited Universe:</b> All respondents	
	<b>Valid Entries:</b> 1      Yes	
	2      No	
TRSPFTPT	Full time or part time employment status of spouse or unmarried partner	Respondent File, Activity Summary File
	<b>Edited Universe:</b> TESPEMPNOT = 1	
	<b>Valid Entries:</b> 1      Full time	
	2      Part time	
	3      Hours vary	
TRSPPRES	Presence of the respondent's spouse or unmarried partner in the household	Respondent File, Activity Summary File
	<b>Edited Universe:</b> All respondents	
	<b>Valid Entries:</b> 1      Spouse present	
	2      Unmarried partner present	
	3      No spouse or unmarried partner present	
TRTALONE	Total time respondent spent alone (in minutes)	Respondent File
	<b>Edited Universe:</b> All respondents	
	<b>Valid Entries:</b> 0      Min Value	
	1440      Max Value	
	<b>* Note:</b> This variable is computed using TUWHO_CODE information; all activities for which who information is not collected, such as sleeping, are omitted from the calculation	

Name	Description	File
TRTCC	Total time spent during diary day providing secondary childcare for household and own nonhousehold children < 13 (in minutes)	Respondent File
	<b>Edited Universe:</b> All respondents	
	<b>Valid Entries:</b> 0 1440	Min Value Max Value
	<b>* Note:</b> TRTCC is the sum of all values of TRTCC_LN for each TUCASEID	
TRTCC_LN	Total time spent during activity providing secondary child care for household and own nonhousehold children < 13 (in minutes)	Activity File
	<b>Edited Universe:</b> All activities for respondents who have at least one household or own nonhousehold child < 13	
	<b>Valid Entries:</b> 0 1440	Min Value Max Value
	<b>* Note:</b> TRTCC_LN is the maximum for the activity of the following variables: TRTOHH_LN, TRTNOHH_LN, and TRTONHH_LN	
TRTCCC	Total time respondent spent with customers, clients, and coworkers (in minutes)	Respondent File
	<b>Edited Universe:</b> All respondents	
	<b>Valid Entries:</b> 0 1440	Min Value Max Value
	<b>* Note:</b> This variable is computed using TUWHO_CODE information; all activities for which who information is not collected, such as working, are omitted from the calculation	
TRTCCTOT	Total time spent during diary day providing secondary childcare for all children < 13 (in minutes)	Respondent File
	<b>Edited Universe:</b> All respondents	
	<b>Valid Entries:</b> 0 1440	Min Value Max Value
	<b>* Note:</b> TRTCCTOT is the sum of all values of TRTCCTOT_LN for each TUCASEID	
TRTCCTOT_LN	Total time spent during activity providing secondary childcare for all children < 13 (in minutes)	Activity File
	<b>Edited Universe:</b> All activities	
	<b>Valid Entries:</b> 0 1440	Min Value Max Value
	<b>* Note:</b> TRTCCTOT_LN is the maximum for the activity of the following variables: TRTOHH_LN, TRTNOHH_LN, TRTONHH_LN, and TRTCOC_LN	
TRTCHILD	Total time respondent spent with household or nonhousehold children < 18 (in minutes)	Respondent File
	<b>Edited Universe:</b> All respondents	
	<b>Valid Entries:</b> 0 1440	Min Value Max Value
	<b>* Note:</b> This variable is computed using TUWHO_CODE information; all activities for which who information is not collected, such as sleeping, are omitted from the calculation	
TRTCOC	Total time spent during diary day providing secondary childcare for nonown, nonhousehold children < 13 (in minutes)	Respondent File
	<b>Edited Universe:</b> All respondents	
	<b>Valid Entries:</b> 0 1440	Min Value Max Value

Name	Description	File
	<b>* Note:</b> TRTCOC is the sum of all values of TRTCOC_LN for each TUCASEID	
TRTCOC_LN	Total time spent during activity providing secondary child care for nonown, nonhousehold children <13 (in minutes)	Activity File
	<b>Edited Universe:</b> All activities	
	<b>Valid Entries:</b> 0 1440	Min Value Max Value
	<b>* Note:</b> TRTCOC_LN is calculated using TUCC8. It does not include activities with activity codes of 0101xx, 0301xx, 0302xx, 0303xx, 0401xx, 0402xx, 0403xx, 180301, 180302, 180303, 180401, 180402, or 180403. TXTCOC is the allocation flag for this variable.	
TRTFAMILY	Total time respondent spent with family members (in minutes)	Respondent File
	<b>Edited Universe:</b> All respondents	
	<b>Valid Entries:</b> 0 1440	Min Value Max Value
	<b>* Note:</b> This variable is computed using TUWHO_CODE information; all activities for which who information is not collected, such as sleeping, are omitted from the calculation	
TRTFRIEND	Total time respondent spent with friends (in minutes)	Respondent File
	<b>Edited Universe:</b> All respondents	
	<b>Valid Entries:</b> 0 1440	Min Value Max Value
	<b>* Note:</b> This variable is computed using TUWHO_CODE information; all activities for which who information is not collected, such as sleeping, are omitted from the calculation	
TRTHH	Total time spent during diary day providing secondary childcare for household children < 13 (in minutes)	Respondent File
	<b>Edited Universe:</b> All respondents	
	<b>Valid Entries:</b> 0 1440	Min Value Max Value
	<b>* Note:</b> TRTHH is the sum of all values of TRTHH_LN for each TUCASEID	
TRTHH_LN	Total time spent during activity providing secondary childcare for household children < 13 (in minutes)	Activity File
	<b>Edited Universe:</b> All activities for respondents with at least one household child < 13	
	<b>Valid Entries:</b> 0 1440	Min Value Max Value
	<b>* Note:</b> TRTHH_LN is the maximum for the activity of the following variables: TRTOHH_LN and TRTNOHH_LN	
TRTHHFAMILY	Total time respondent spent with household family members (in minutes)	Respondent File
	<b>Edited Universe:</b> All respondents	
	<b>Valid Entries:</b> 0 1440	Min Value Max Value
	<b>* Note:</b> This variable is computed using TUWHO_CODE information; all activities for which who information is not collected, such as sleeping, are omitted from the calculation	
TRTIER2	First and second activity tiers	Activity File
	<b>Edited Universe:</b> All activities	

Name	Description	File
TRTNOCHILD	Total time respondent spent with nonown children < 18 (in minutes)	Respondent File
	<b>* Note:</b> This variable includes information from TUTIER1CODE and TUTIER2CODE	
	<b>Edited Universe:</b> All respondents	
	<b>Valid Entries:</b> 0	Min Value
	1440	Max Value
	<b>* Note:</b> This variable is computed using TUWHO_CODE information; all activities for which who information is not collected, such as sleeping, are omitted from the calculation	
TRTNOHH	Total time spent during diary day providing secondary childcare for nonown household children < 13 (in minutes)	Respondent File
	<b>Edited Universe:</b> All respondents	
	<b>Valid Entries:</b> 0	Min Value
	1440	Max Value
	<b>* Note:</b> TRTNOHH is the sum of all values of TRTNOHH_LN for each TUCASEID	
TRTNOHH_LN	Total time spent during activity providing secondary childcare for nonown household children < 13 (in minutes)	Activity File
	<b>Edited Universe:</b> All activities for respondents with at least one nonown household child < 13	
	<b>Valid Entries:</b> 0	Min Value
	1440	Max Value
	<b>* Note:</b> TRTNOHH_LN is calculated using TUCC5B. It does not include activities with activity codes of 0101xx, 0301xx, 0302xx, 0303xx, 180301, 180302, or 180303. It also does not include any activity or part of any activity in which no household child was awake (determined by TUCC2 and TUCC4). TXTNOHH is the allocation flag for this variable.	
TRTO	Total time spent during diary day providing secondary childcare for own children < 13 (in minutes)	Respondent File
	<b>Edited Universe:</b> All respondents	
	<b>Valid Entries:</b> 0	Min Value
	1440	Max Value
	<b>* Note:</b> TRTO is the sum of all values of TRTO_LN for each TUCASEID	
TRTO_LN	Total time spent during activity providing secondary childcare for own children < 13 (in minutes)	Activity File
	<b>Edited Universe:</b> All activities for respondents with at least one own child < 13	
	<b>Valid Entries:</b> 0	Min Value
	1440	Max Value
	<b>* Note:</b> TRTO_LN is the maximum for the activity of the following variables: TRTOHH_LN and TRTONHH_LN	
TRTOHH	Total time spent during diary day providing secondary childcare for own household children < 13 (in minutes)	Respondent File
	<b>Edited Universe:</b> All respondents	
	<b>Valid Entries:</b> 0	Min Value
	1440	Max Value
	<b>* Note:</b> TRTOHH is the sum of all values of TRTOHH_LN for each TUCASEID	
TRTOHH_LN	Total time spent during activity providing secondary childcare for own household children < 13 (in minutes)	Activity File
	<b>Edited Universe:</b> All activities for respondents with at least one own household child < 13	



Name	Description	File
	<b>Valid Entries:</b> 0 1440 <b>* Note:</b> TRTOHH_LN is calculated using TUCC5. It does not include activities with activity codes of 0101xx, 0301xx, 0302xx, 0303xx, 180301, 180302, or 180303. It also does not include any activity or part of any activity in which no household child was awake (determined by TUCC2 and TUCC4). TXTOHH is the allocation flag for this variable.	
TRTOHHCHILD	Total time respondent spent with own household children < 18 (in minutes)	Respondent File
	<b>Edited Universe:</b> All respondents  <b>Valid Entries:</b> 0 1440 <b>* Note:</b> This variable is computed using TUWHO_CODE information; all activities for which who information is not collected, such as sleeping, are omitted from the calculation	
TRTONHH	Total time spent during diary day providing secondary childcare for own nonhousehold children < 13 (in minutes)	Respondent File
	<b>Edited Universe:</b> All respondents  <b>Valid Entries:</b> 0 1440 <b>* Note:</b> TRTONHH is the sum of all values of TRTONHH_LN for each TUCASEID	
TRTONHH_LN	Total time spent during activity providing secondary childcare for own nonhousehold children < 13 (in minutes)	Activity File
	<b>Edited Universe:</b> All activities for respondents with at least one own nonhousehold child < 13  <b>Valid Entries:</b> 0 1440 <b>* Note:</b> TRTONHH_LN is calculated using TUCC7. It does not include activities with activity codes of 0101xx, 0301xx, 0302xx, 0303xx, 0401xx, 0402xx, 0403xx, 180301, 180302, 180303, 180401, 180402, or 180403. TXTONHH is the allocation flag for this variable.	
TRTONHHCHILD	Total time respondent spent with own nonhousehold children < 18 (in minutes)	Respondent File
	<b>Edited Universe:</b> All respondents  <b>Valid Entries:</b> 0 1440 <b>* Note:</b> This variable is computed using TUWHO_CODE information; all activities for which who information is not collected, such as sleeping, are omitted from the calculation	
TRTSPONLY	Total time respondent spent with spouse only (in minutes)	Respondent File
	<b>Edited Universe:</b> All respondents  <b>Valid Entries:</b> 0 1440 <b>* Note:</b> This variable is computed using TUWHO_CODE information; all activities for which who information is not collected, such as sleeping, are omitted from the calculation	
TRTSPOUSE	Total time respondent spent with spouse (others may be present) (in minutes)	Respondent File
	<b>Edited Universe:</b> All respondents  <b>Valid Entries:</b> 0 1440	

Name	Description	File
	<b>* Note:</b> This variable is computed using TUWHO_CODE information; all activities for which who information is not collected, such as sleeping, are omitted from the calculation	
TRTUNMPART	Total time respondent spent with unmarried partner (others may be present) (in minutes)	Respondent File
	<b>Edited Universe:</b> All respondents	
	<b>Valid Entries:</b> 0 Min Value 1440 Max Value	
	<b>* Note:</b> This variable is computed using TUWHO_CODE information; all activities for which who information is not collected, such as sleeping, are omitted from the calculation	
TRWERNAL	TRERNWA: allocation flag	Respondent File
	<b>Edited Universe:</b> TELFS = 1 or 2 and TEIO1COW = 1 - 5	
	<b>Valid Entries:</b> 0 TRERNWA does not contain allocated information 1 TRERNWA contains allocated information	
TRWHONA	Who information not asked for activity	Who File
	<b>Edited Universe:</b> All activities	
	<b>Valid Entries:</b> 0 TUWHO_CODE asked 1 TUWHO_CODE not asked	
TRYHHCHILD	Age of youngest household child < 18	Respondent File, Activity Summary File
	<b>Edited Universe:</b> TRHHCHILD = 1	
	<b>Valid Entries:</b> 0 Min Value 17 Max Value	
TTHR	Hourly pay topcode flag	Respondent File
	<b>Valid Entries:</b> 0 Not topcoded 1 Topcoded	
	<b>* Note:</b> Indicates topcoding of hourly pay in earnings variables	
TTOT	Overtime amount topcode flag	Respondent File
	<b>Valid Entries:</b> 0 Not topcoded 1 Topcoded	
	<b>* Note:</b> Indicates topcoding of overtime pay in earnings variables	
TTWK	Weekly earnings topcode flag	Respondent File
	<b>Valid Entries:</b> 0 Not topcoded 1 Topcoded	
	<b>* Note:</b> Indicates topcoding of weekly pay in earnings variables	
TUABSOT	In the last seven days, did you have a job either full or part time?	Respondent File
	<b>Valid Entries:</b> 1 Yes 2 No 3 Retired 4 Disabled 5 Unable to work	
TUACTDUR	Duration of activity in minutes (last activity not truncated at 4:00 a.m.)	Activity File
	<b>Valid Entries:</b> 1 Min Value 9999 Max Value	

Name	Description	File
TUACTDUR24	Duration of activity in minutes (last activity truncated at 4:00 a.m.)	Activity File
	<b>Valid Entries:</b> 1 1440	Min Value Max Value
TUACTIVITY_N	Activity line number	Activity File, Who File
	<b>Valid Entries:</b> 1 91	Min Value Max Value
TUBUS	Does anyone in the household own a business or a farm?	Respondent File
	<b>Valid Entries:</b> 1 Yes 2 No	
TUBUS1	In the last seven days, did you do any unpaid work in the family business or farm?	Respondent File
	<b>Valid Entries:</b> 1 Yes 2 No	
TUBUS2OT	Do you receive payments or profits from the business?	Respondent File
	<b>Valid Entries:</b> 1 Yes 2 No	
TUBUSL1	TULINENO of farm or business owner (first owner)	Respondent File
	<b>Valid Entries:</b> 0 30	Min Value Max Value
TUBUSL2	TULINENO of farm or business owner (second owner)	Respondent File
	<b>Valid Entries:</b> 0 30	Min Value Max Value
TUBUSL3	TULINENO of farm or business owner (third owner)	Respondent File
	<b>Valid Entries:</b> 0 30	Min Value Max Value
TUBUSL4	TULINENO of farm or business owner (fourth owner)	Respondent File
	<b>Valid Entries:</b> 0 30	Min Value Max Value
TUBWGT	ATUS base weight	Respondent File
	<b>Valid Entries:</b> 1 999999.999999	Min Value Max Value
TUCASEID	ATUS Case ID (14-digit identifier)	All Files
TUCC2	Time first household child < 13 woke up	Respondent File
	<b>Valid Entries:</b> 00:00:00 24:00:00	Min Value Max Value
TUCC4	Time last household child < 13 went to bed	Respondent File
	<b>Valid Entries:</b> 00:00:00 24:00:00	Min Value Max Value
TUCC5	Was at least one of your own household children < 13 in your care during this activity?	Activity File
	<b>Valid Entries:</b> 0 No 1 Yes 97 No additional activities involved childcare	
TUCC5_CK	Reason respondent did not report secondary childcare activities for own household children	Respondent File
	<b>Valid Entries:</b> 1 No secondary childcare activities 2 Respondent didn't know	

Name	Description	File
	<b>Valid Entries:</b> 3 Respondent refused to answer 4 Child was away from home yesterday 5 Respondent was away from home yesterday	
TUCC5B	Was at least one of your non-own household children < 13 in your care during this activity?	Activity File
	<b>Valid Entries:</b> 0 No 1 Yes 97 No additional activities involved childcare	
TUCC5B_CK	Reason respondent did not report secondary childcare activities for non-own household children	Respondent File
	<b>Valid Entries:</b> 1 No secondary childcare activities 2 Respondent didn't know 3 Respondent refused to answer 4 Child was away from home yesterday 5 Respondent was away from home yesterday	
TUCC7	Was at least one of your own non-household children < 13 in your care during this activity?	Activity File
	<b>Valid Entries:</b> 0 No 1 Yes 97 No additional activities involved childcare	
TUCC8	Other than household or own non-household children < 13, was there a child 0-12 in your care during this activity?	Activity File
	<b>Valid Entries:</b> 0 No 1 Yes 97 No additional activities involved childcare	
TUCC9	Are the non-own, non-household children you cared for in TUCC8 related to you?	Respondent File
	<b>Valid Entries:</b> 1 Yes 2 No 3 Some are, some are not	
TUCUMDUR	Cumulative duration of activity lengths in minutes; last activity not truncated at 4:00am or 1440 minutes (cumulative total of TUACTIONDUR for each TUCASEID)	Activity File
	<b>Valid Entries:</b> 1 Min Value 9999 Max Value	
TUCUMDUR24	Cumulative duration of activity lengths in minutes; last activity truncated at 4:00am or 1440 minutes (cumulative total of TUACTIONDUR24 for each TUCASEID)	Activity File
	<b>Valid Entries:</b> 1 Min Value 1440 Max Value	
TUDIARYDATE	Date of diary day (date about which the respondent was interviewed)	Respondent File
	<b>Valid Entries:</b> 20090101 Min Value 20091230 Max Value	
	<b>* Note:</b> TUDIARYDATE is in YYYYMMDD format	
TUDIARYDAY	Day of the week of diary day (day of the week about which the respondent was interviewed)	Respondent File, Activity Summary File
	<b>Valid Entries:</b> 1 Sunday 2 Monday 3 Tuesday 4 Wednesday	

Name	Description	File
	<b>Valid Entries:</b> 5 Thursday 6 Friday 7 Saturday	
TUDIS	Last time we spoke to someone in this household you were reported to have a disability. Does your disability prevent you from doing any kind of work for the next six months?	Respondent File
	<b>Valid Entries:</b> 1 Yes 2 No 3 Did not have a disability last time	
TUDIS1	Does your disability prevent you from accepting any kind of work during the next six months?	Respondent File
	<b>Valid Entries:</b> 1 Yes 2 No	
TUDIS2	Do you have a disability that prevents you from accepting any kind of work during the next six months?	Respondent File
	<b>Valid Entries:</b> 1 Yes 2 No	
TUERN2	Weekly overtime earnings (2 implied decimals)	Respondent File
	<b>Valid Entries:</b> 0 Min Value 288461 Max Value	
TUERNH1C	What is your hourly rate of pay on this job, excluding overtime pay, tips, or commissions? (2 implied decimals)	Respondent File
	<b>Valid Entries:</b> 0 Min Value 9999 Max Value * <b>Note:</b> Only asked if the respondent indicates that the recorded hourly rate read back by the interviewer is not correct	
TUFINLWGT	ATUS final weight	Respondent File, Activity Summary File
	<b>Valid Entries:</b> 0 Min Value 999999999.9999999 Max Value * <b>Note:</b> The weighting methodology changed between years, so this variable is not comparable for 2003 - 2006. For more information, please see the ATUS User's Guide.	
TUFWK	In the last seven days did you do any work for pay or profit?	Respondent File
	<b>Valid Entries:</b> 1 Yes 2 No 3 Retired 4 Disabled 5 Unable to work	
TUIO1MFG	Is this business or organization mainly manufacturing, retail trade, wholesale trade, or something else? (main job)	Respondent File
	<b>Valid Entries:</b> 1 Manufacturing 2 Retail trade 3 Wholesale trade 4 Something else	
TUIODP1	Last time we spoke to someone in this household, you were reported to work for (employer's name). Do you still work for (employer's name)? (main job)	Respondent File
	<b>Valid Entries:</b> 1 Yes 2 No	

Name	Description	File
TUIODP2	Have the usual activities and duties of your job changed since (month of CPS interview)? (main job)	Respondent File
	<b>Valid Entries:</b> 1 Yes 2 No	
TUIODP3	Last time we spoke to someone in this household, you were reported as (occupation) and your usual duties were (activities). Is this an accurate description of your current job? (main job)	Respondent File
	<b>Valid Entries:</b> 1 Yes 2 No	
TULAY	During the last seven days were you on layoff from your job?	Respondent File
	<b>Valid Entries:</b> 1 Yes 2 No 3 Retired 4 Disabled 5 Unable to work	
TULAY6M	Have you been given any indication that you will be recalled to work within the next 6 months?	Respondent File
	<b>Valid Entries:</b> 1 Yes 2 No	
TULAYAVR	Why could you not have started a job in the last week?	Respondent File
	<b>Valid Entries:</b> 1 Own temporary illness 2 Going to school 3 Other	
TULAYDT	Has your employer given you a date to return to work? (to layoff job)	Respondent File
	<b>Valid Entries:</b> 1 Yes 2 No	
TULINENO	ATUS person line number	ATUS-CPS File, Respondent File, Roster File, Who File
	<b>Valid Entries:</b> 1 Min Value 30 Max Value	
	<b>* Note:</b> The person selected to be interviewed for ATUS is always TULINENO = 1	
TULK	Have you been doing anything to find work during the last four weeks?	Respondent File
	<b>Valid Entries:</b> 1 Yes 2 No 3 Retired 4 Disabled 5 Unable to work	
TULKAVR	Why could you not have started a job last week?	Respondent File
	<b>Valid Entries:</b> 1 Waiting for new job to begin 2 Own temporary illness 3 Going to school 4 Other	
TULKDK1	You said you have been trying to find work. How did you go about looking? (first method)	Respondent File
	<b>Valid Entries:</b> 1 Contacted employer directly/interview 2 Contacted public employment agency 3 Contacted private employment agency 4 Contacted friends or relatives 5 Contacted school/university employment center	

Name	Description	File
	<b>Valid Entries:</b> 6 Sent out resumes/filled out applications 7 Checked union/professional registers 8 Placed or answered ads 9 Other active 10 Looked at ads 11 Attended job training programs/courses 12 Nothing 13 Other passive * <b>Note:</b> In order to research job search methods, users must combine all fields TELKM1, TULKM2 - TULKM6, TULKDK1 - TULKDK6, and TULKPS1 - TULKPS6	
TULKDK2	TULKDK1 text: (second method)	Respondent File
	<b>Valid Entries:</b> 1 Contacted employer directly/interview 2 Contacted public employment agency 3 Contacted private employment agency 4 Contacted friends or relatives 5 Contacted school/university employment center 6 Sent out resumes/filled out applications 7 Checked union/professional registers 8 Placed or answered ads 9 Other active 10 Looked at ads 11 Attended job training programs/courses 13 Other passive 97 No additional job search activities * <b>Note:</b> In order to research job search methods, users must combine all fields TELKM1, TULKM2 - TULKM6, TULKDK1 - TULKDK6, and TULKPS1 - TULKPS6	
TULKDK3	TULKDK1 text: (third method)	Respondent File
	<b>Valid Entries:</b> 1 Min Value 97 Max Value * <b>Note:</b> See valid values for TULKDK2	
TULKDK4	TULKDK1 text: (fourth method)	Respondent File
	<b>Valid Entries:</b> 1 Min Value 97 Max Value * <b>Note:</b> See valid values for TULKDK2	
TULKDK5	TULKDK1 text: (fifth method)	Respondent File
	<b>Valid Entries:</b> 1 Min Value 97 Max Value * <b>Note:</b> See valid values for TULKDK2	
TULKDK6	TULKDK1 text: (sixth method)	Respondent File
	<b>Valid Entries:</b> 1 Min Value 97 Max Value * <b>Note:</b> See valid values for TULKDK2	
TULKM2	What are all of the things you have done to find work during the last 4 weeks? (second method)	Respondent File
	<b>Valid Entries:</b> 1 Contacted employer directly/interview 2 Contacted public employment agency 3 Contacted private employment agency 4 Contacted friends or relatives 5 Contacted school/university employment center	

Name	Description	File
	<b>Valid Entries:</b> 6 Sent out resumes/filled out applications 7 Checked union/professional registers 8 Placed or answered ads 9 Other active 10 Looked at ads 11 Attended job training programs/courses 13 Other passive 97 No additional job search activities * <b>Note:</b> In order to research job search methods, users must combine all fields TELKM1, TULKM2 - TULKM6, TULKDK1 - TULKDK6, and TULKPS1 - TULKPS6	
TULKM3	TULKM2 text: (third method)	Respondent File
	<b>Valid Entries:</b> 1 Min Value 97 Max Value * <b>Note:</b> See valid values for TULKM2	
TULKM4	TULKM2 text: (fourth method)	Respondent File
	<b>Valid Entries:</b> 1 Min Value 97 Max Value * <b>Note:</b> See valid values for TULKM2	
TULKM5	TULKM2 text: (fifth method)	Respondent File
	<b>Valid Entries:</b> 1 Min Value 97 Max Value * <b>Note:</b> See valid values for TULKM2	
TULKM6	TULKM2 text: (sixth method)	Respondent File
	<b>Valid Entries:</b> 1 Min Value 97 Max Value * <b>Note:</b> See valid values for TULKM2	
TULKPS1	Can you tell me more about what you did to search for work? (first method)	Respondent File
	<b>Valid Entries:</b> 1 Contacted employer directly/interview 2 Contacted public employment agency 3 Contacted private employment agency 4 Contacted friends or relatives 5 Contacted school/university employment center 6 Sent out resumes/filled out applications 7 Checked union/professional registers 8 Placed or answered ads 9 Other active 10 Looked at ads 11 Attended job training programs/courses 12 Nothing 13 Other passive 97 No more job search activities * <b>Note:</b> In order to research job search methods, users must combine all fields TELKM1, TULKM2 - TULKM6, TULKDK1 - TULKDK6, and TULKPS1 - TULKPS6	
TULKPS2	TULKPS1 text: (second method)	Respondent File
	<b>Valid Entries:</b> 1 Contacted employer directly/interview 2 Contacted public employment agency 3 Contacted private employment agency 4 Contacted friends or relatives	



Name	Description	File
	<b>Valid Entries:</b> 5 Contacted school/university employment center 6 Sent out resumes/filled out applications 7 Checked union/professional registers 8 Placed or answered ads 9 Other active 10 Looked at ads 11 Attended job training programs/courses 13 Other passive 97 No additional job search activities <b>* Note:</b> In order to research job search methods, users must combine all fields TELKM1, TULKM2 - TULKM6, TULKDK1 - TULKDK6, and TULKPS1 - TULKPS6	
TULKPS3	TULKPS1 text: (third method)	Respondent File
	<b>Valid Entries:</b> 1 Min Value 97 Max Value <b>* Note:</b> See valid values for TULKPS2	
TULKPS4	TULKPS1 text: (fourth method)	Respondent File
	<b>Valid Entries:</b> 1 Min Value 97 Max Value <b>* Note:</b> See valid values for TULKPS2	
TULKPS5	TULKPS1 text: (fifth method)	Respondent File
	<b>Valid Entries:</b> 1 Min Value 97 Max Value <b>* Note:</b> See valid values for TULKPS2	
TULKPS6	TULKPS1 text: (sixth method)	Respondent File
	<b>Valid Entries:</b> 1 Min Value 97 Max Value <b>* Note:</b> See valid values for TULKPS2	
TUMONTH	Month of diary day (month of day about which ATUS respondent was interviewed)	Respondent File
	<b>Valid Entries:</b> 1 Min Value 12 Max Value	
TURETOT	The last time we spoke to someone in this household you were reported to be retired. Are you still retired?	Respondent File
	<b>Valid Entries:</b> 1 Yes 2 No 3 Was not retired last time	
TUSPABS	In the last seven days, did your spouse or unmarried partner have a job either full or part time?	Respondent File
	<b>Valid Entries:</b> 1 Yes 2 No 3 Retired 4 Disabled 5 Unable to work	
TUSPUSFT	Does your spouse or unmarried partner usually work 35 hours or more per week?	Respondent File
	<b>Valid Entries:</b> 1 Yes 2 No 3 Hours vary 4 No longer has a job	

Name	Description	File
TUSPWK	In the last seven days, did your spouse or unmarried partner do any work for pay or profit?	Respondent File
	<b>Valid Entries:</b>	
	1	Yes
	2	No
	3	Retired
	4	Disabled
	5	Unable to work
TUSTARTTIM	Activity start time	Activity File
	<b>Valid Entries:</b>	
	00:00:00	Min Value
	24:00:00	Max Value
TUSTOPTIME	Activity stop time	Activity File
	<b>Valid Entries:</b>	
	00:00:00	Min Value
	24:00:00	Max Value
TUTIER1CODE	Lexicon Tier 1: 1st and 2nd digits of 6-digit activity code	Activity File
	<b>Valid Entries:</b>	
	01	Min Value
	50	Max Value
	<b>* Note:</b> Six-digit activity codes are created by combining TUTIER1CODE, TUTIER2CODE, and TUTIER3CODE.	
TUTIER2CODE	Lexicon Tier 2: 3rd and 4th digits of 6-digit activity code	Activity File
	<b>Valid Entries:</b>	
	01	Min Value
	99	Max Value
	<b>* Note:</b> Six-digit activity codes are created by combining TUTIER1CODE, TUTIER2CODE, and TUTIER3CODE.	
TUTIER3CODE	Lexicon Tier 3: 5th and 6th digits of 6-digit activity code	Activity File
	<b>Valid Entries:</b>	
	01	Min Value
	99	Max Value
	<b>* Note:</b> Six-digit activity codes are created by combining TUTIER1CODE, TUTIER2CODE, and TUTIER3CODE.	
TUWHO_CODE	Who was in the room with you / Who accompanied you?	Who File
	<b>Valid Entries:</b>	
	18	Alone
	19	Alone
	20	Spouse
	21	Unmarried partner
	22	Own household child
	23	Grandchild
	24	Parent
	25	Brother/sister
	26	Other related person
	27	Foster child
	28	Housemate/roommate
	29	Roomer/boarder
	30	Other nonrelative
	40	Own nonhousehold child < 18
	51	Parents (not living in household)
	52	Other nonhousehold family members < 18
	53	Other nonhousehold family members 18 and older (including parents-in-law)
	54	Friends
	55	Co-workers/colleagues/clients
	56	Neighbors/acquaintances

Name	Description	File
	<b>Valid Entries:</b> 57 Other nonhousehold children < 18 58 Other nonhousehold adults 18 and older <b>* Note:</b> Not collected for activities with activity codes of 0101xx, 0102xx, 0104xx, 0501xx, 500105, or 500106. There is no distinction between 18 and 19. All codes of 40 or greater refer to people living outside of the respondent's household.	
TUYEAR	Year of diary day (year of day about which respondent was interviewed)	Respondent File
	<b>Valid Entries:</b> 2009 Min Value 2009 Max Value	
TXABSRN	TEABSRN: allocation flag	Respondent File
	<b>Valid Entries:</b> 0 Min Value 53 Max Value <b>* Note:</b> See Introduction for allocation flag values	
TXAGE	TEAGE: allocation flag	Roster File
	<b>Valid Entries:</b> 00 Value - no change 01 Blank - no change 02 Don't know - no change 03 Refused - no change 10 Value to value 11 Blank to value 12 Don't know to value 13 Refused to value 20 Value to longitudinal value 21 Blank to longitudinal value 22 Don't know to longitudinal value 23 Refused to longitudinal value 30 Value to allocated longitudinal value 31 Blank to allocated longitudinal value 32 Don't know to allocated longitudinal value 33 Refused to allocated longitudinal value 40 Value to allocated value 41 Blank to allocated value 42 Don't know to allocated value 43 Refused to allocated value 50 Value to blank 52 Don't know to blank 53 Refused to blank 60 Topcoded 61 Topcoded and allocated <b>* Note:</b> There are two valid values (60 and 61) that are not valid values for any other TX variable	
TXERN	TEERN: allocation flag	Respondent File
	<b>Valid Entries:</b> 0 Min Value 53 Max Value <b>* Note:</b> See Introduction for allocation flag values	
TXERNH10	TEERNH10: allocation flag	Respondent File
	<b>Valid Entries:</b> 0 Min Value 53 Max Value <b>* Note:</b> See Introduction for allocation flag values	

Name	Description	File
TXERNH2	TEERNH2: allocation flag	Respondent File
	<b>Valid Entries:</b> 0 Min Value 53 Max Value	
	<b>* Note:</b> See Introduction for allocation flag values	
TXERNHRO	TEERNHRO: allocation flag	Respondent File
	<b>Valid Entries:</b> 0 Min Value 53 Max Value	
	<b>* Note:</b> See Introduction for allocation flag values	
TXERNHRY	TEERNHRY: allocation flag	Respondent File
	<b>Valid Entries:</b> 0 Min Value 53 Max Value	
	<b>* Note:</b> See Introduction for allocation flag values	
TXERNPER	TEERNPER: allocation flag	Respondent File
	<b>Valid Entries:</b> 0 Min Value 53 Max Value	
	<b>* Note:</b> See Introduction for allocation flag values	
TXERNRT	TEERNRT: allocation flag	Respondent File
	<b>Valid Entries:</b> 0 Min Value 53 Max Value	
	<b>* Note:</b> See Introduction for allocation flag values	
TXERNUOT	TEERNUOT: allocation flag	Respondent File
	<b>Valid Entries:</b> 0 Min Value 53 Max Value	
	<b>* Note:</b> See Introduction for allocation flag values	
TXERNWKP	TEERNWKP: allocation flag	Respondent File
	<b>Valid Entries:</b> 0 Min Value 53 Max Value	
	<b>* Note:</b> See Introduction for allocation flag values	
TXHRFTPT	TEHRFTPT: allocation flag	Respondent File
	<b>Valid Entries:</b> 0 Min Value 53 Max Value	
	<b>* Note:</b> See Introduction for allocation flag values	
TXHRUSL1	TEHRUSL1: allocation flag	Respondent File
	<b>Valid Entries:</b> 0 Min Value 53 Max Value	
	<b>* Note:</b> See Introduction for allocation flag values	
TXHRUSL2	TEHRUSL2: allocation flag	Respondent File
	<b>Valid Entries:</b> 0 Min Value 53 Max Value	
	<b>* Note:</b> See Introduction for allocation flag values	
TXHRUSLT	TEHRUSLT: allocation flag	Respondent File
	<b>Valid Entries:</b> 0 Min Value 53 Max Value	
	<b>* Note:</b> See Introduction for allocation flag values	

Name	Description	File
TXIO1COW	TEIO1COW: allocation flag	Respondent File
	<b>Valid Entries:</b> 0 Min Value 53 Max Value	
	<b>* Note:</b> See Introduction for allocation flag values	
TXIO1ICD	TEIO1ICD: allocation flag	Respondent File
	<b>Valid Entries:</b> 0 Min Value 53 Max Value	
	<b>* Note:</b> See Introduction for allocation flag values	
TXIO1OCD	TEIO1OCD: allocation flag	Respondent File
	<b>Valid Entries:</b> 0 Min Value 53 Max Value	
	<b>* Note:</b> See Introduction for allocation flag values	
TXLAYAVL	TELAYAVL: allocation flag	Respondent File
	<b>Valid Entries:</b> 0 Min Value 53 Max Value	
	<b>* Note:</b> See Introduction for allocation flag values	
TXLAYLK	TELAYLK: allocation flag	Respondent File
	<b>Valid Entries:</b> 0 Min Value 53 Max Value	
	<b>* Note:</b> See Introduction for allocation flag values	
TXLFS	TELFS: allocation flag	Respondent File
	<b>Valid Entries:</b> 0 Min Value 53 Max Value	
	<b>* Note:</b> See Introduction for allocation flag values	
TXLKAVL	TELKAVL: allocation flag	Respondent File
	<b>Valid Entries:</b> 0 Min Value 53 Max Value	
	<b>* Note:</b> See Introduction for allocation flag values	
TXLKM1	TELKM1: allocation flag	Respondent File
	<b>Valid Entries:</b> 0 Min Value 53 Max Value	
	<b>* Note:</b> See Introduction for allocation flag values	
TXMJOT	TEMJOT: allocation flag	Respondent File
	<b>Valid Entries:</b> 0 Min Value 53 Max Value	
	<b>* Note:</b> See Introduction for allocation flag values	
TXRET1	TERET1: allocation flag	Respondent File
	<b>Valid Entries:</b> 0 Min Value 53 Max Value	
	<b>* Note:</b> See Introduction for allocation flag values	
TXRRP	TERRP: allocation flag	Roster File
	<b>Valid Entries:</b> 0 Min Value 53 Max Value	
	<b>* Note:</b> See Introduction for allocation flag values	

Name	Description	File
TXSCHENR	TESCHENR: allocation flag	Respondent File
	<b>Valid Entries:</b> 0 Min Value 53 Max Value	
	<b>* Note:</b> See Introduction for allocation flag values	
TXSCHFT	TESCHFT: allocation flag	Respondent File
	<b>Valid Entries:</b> 0 Min Value 53 Max Value	
	<b>* Note:</b> See Introduction for allocation flag values	
TXSCHLVL	TESCHLVL: allocation flag	Respondent File
	<b>Valid Entries:</b> 0 Min Value 53 Max Value	
	<b>* Note:</b> See Introduction for allocation flag values	
TXSEX	TESEX: allocation flag	Roster File
	<b>Valid Entries:</b> 0 Min Value 53 Max Value	
	<b>* Note:</b> See Introduction for allocation flag values	
TXSPEMPNOT	TESPEMPNOT: allocation flag	Respondent File
	<b>Valid Entries:</b> 0 Min Value 53 Max Value	
	<b>* Note:</b> See Introduction for allocation flag values	
TXSPUHRS	TESPUHRS: allocation flag	Respondent File
	<b>Valid Entries:</b> 0 Min Value 53 Max Value	
	<b>* Note:</b> See Introduction for allocation flag values	
TXTCC	TRTCC_LN and TRTCC: allocation flag	Respondent File
	<b>Valid Entries:</b> 0 TRTCC_LN and TRTCC do not contain allocated data 1 TRTCC_LN and TRTCC contain allocated data	
	<b>* Note:</b> A value of 1 indicates that at least one of the following variables is allocated: TRTOHH_LN, TRTNOHH_LN, or TRTONHH_LN	
TXTCCTOT	TRTCCTOT_LN and TRTCCTOT: allocation flag	Respondent File
	<b>Valid Entries:</b> 0 TRTCCTOT_LN and TRTCCTOT do not contain allocated data 1 TRTCCTOT_LN and TRTCCTOT contain allocated data	
	<b>* Note:</b> A value of 1 indicates that at least one of the following variables is allocated: TRTCOC_LN, TRTOHH_LN, TRTNOHH_LN, or TRTONHH_LN	
TXTCOC	TRTCOC_LN and TRTCOC: allocation flag	Respondent File
	<b>Valid Entries:</b> 0 TRTCOC_LN and TRTCOC do not contain allocated data 1 TRTCOC_LN and TRTCOC contain allocated data	
	<b>* Note:</b> Allocated values are based on time spent with non-own non-household children < 18 when no other non-household adult was present. Calculations do not include activities with activity codes of 0101xx, 0301xx, 0302xx, 0303xx, 0401xx, 0402xx, 0403xx, 180301, 180302, 180303, 180401, 180402, or 180403.	
TXTHH	TRTHH_LN and TRTHH: allocation flag	Respondent File
	<b>Valid Entries:</b> 0 TRTHH_LN and TRTHH do not contain allocated data 1 TRTHH_LN and TRTHH contain allocated data	

Name	Description	File
	<p><b>* Note:</b> A value of 1 indicates that at least one of the following variables is allocated: TRTOHH_LN or TRTNOHH_LN</p>	
TXTNOHH	TRTNOHH_LN and TRTNOHH: allocation flag	Respondent File
	<p><b>Valid Entries:</b>     0           TRTNOHH_LN and TRTNOHH do not contain allocated data                           1           TRTNOHH_LN and TRTNOHH contain allocated data</p> <p><b>* Note:</b> Allocated values are based on time spent with non-own household children &lt; 13. Calculations do not include activities with activity codes of 0101xx, 0301xx, 0302xx, 0303xx, 180301, 180302, or 180303. They also do not include any activities or parts of any activities in which no household child was awake (determined by TUCC2 and TUCC4).</p>	
TXTO	TRTO_LN and TRTO: allocation flag	Respondent File
	<p><b>Valid Entries:</b>     0           TRTO_LN and TRTO do not contain allocated data                           1           TRTO_LN and TRTO contain allocated data</p> <p><b>* Note:</b> A value of 1 indicates that at least one of the following variables is allocated: TRTOHH_LN or TRTONHH_LN</p>	
TXTOHH	TRTOHH_LN and TRTOHH: allocation flag	Respondent File
	<p><b>Valid Entries:</b>     0           TRTOHH_LN and TRTOHH do not contain allocated data                           1           TRTOHH_LN and TRTOHH contain allocated data</p> <p><b>* Note:</b> Allocated values are based on time spent with own household children &lt; 13. Calculations do not include activities with activity codes of 0101xx, 0301xx, 0302xx, 0303xx, 180301, 180302, or 180303. They also do not include any activities or parts of any activities in which no household child was awake (determined by TUCC2 and TUCC4).</p>	
TXTONHH	TRTONHH_LN and TRTONHH: allocation flag	Respondent File
	<p><b>Valid Entries:</b>     0           TRTONHH_LN and TRTONHH do not contain allocated data                           1           TRTONHH_LN and TRTONHH contain allocated data</p> <p><b>* Note:</b> Allocated values are based on time spent with own non-household children &lt; 13. Calculations do not include activities with activity codes of 0101xx, 0301xx, 0302xx, 0303xx, 0401xx, 0402xx, 0403xx, 180301, 180302, 180303, 180401, 180402, or 180403.</p>	
TXWHERE	TEWHERE: allocation flag	Activity File
	<p><b>Valid Entries:</b>     0           Min Value                           53          Max Value</p> <p><b>* Note:</b> See Introduction for allocation flag values</p>	

## APPENDIX A

### Detailed Industry Code using the 2002 Census Industry Classification system (TRDTIND1)

TRDTIND1	Description	TEIO1ICD
1	Agriculture	0170-0180, 0290
2	Forestry, logging, fishing, hunting, and trapping	0190-0280
3	Mining	0370-0490
4	Construction	770
5	Nonmetallic mineral product manufacturing	2470-2590
6	Primary metals and fabricated metal products	2670-2990
7	Machinery manufacturing	3070-3290
8	Computer and electronic product manufacturing	3360-3390
9	Electrical equipment, appliance manufacturing	3470, 3490
10	Transportation equipment manufacturing	3570-3690
11	Wood product manufacturing	3770-3870
12	Furniture and fixtures manufacturing	3890
13	Miscellaneous and not specified manufacturing	3960-3990
14	Food manufacturing	1070-1290
15	Beverage and tobacco product manufacturing	1370, 1390
16	Textile, apparel, and leather manufacturing	1470-1790
17	Paper manufacturing and printing	1870-1990
18	Petroleum and coal products manufacturing	2070, 2090
19	Chemical manufacturing	2170-2290
20	Plastics and rubber products manufacturing	2370-2390
21	Wholesale trade	4070-4590
22	Retail trade	4670-5790
23	Transportation and warehousing	6070-6390
24	Utilities	0570-0690
25	Publishing industries (except internet)	6470-6490
26	Motion picture and sound recording industries	6570, 6590
27	Broadcasting (except internet)	6670
28	Internet publishing and broadcasting	6675
29	Telecommunications	6680, 6690
30	Internet service providers and data processing services	6692, 6695
31	Other information services	6770, 6780
32	Finance	6870-6970
33	Insurance	6990
34	Real estate	7070
35	Rental and leasing services	7080-7190
36	Professional, scientific, and technical services	7270-7490
37	Management of companies and enterprises	7570
38	Administrative and support services	7580-7780
39	Waste management and remediation services	7790
40	Educational services	7860-7890



41	Hospitals	8190
42	Health care services, except hospitals	7970-8180, 8270, 8290
43	Social assistance	8370-8470
44	Arts, entertainment, and recreation	8560-8590
45	Traveler accommodation	8660, 8670
46	Food services and drinking places	8680, 8690
47	Repair and maintenance	8770-8890
48	Personal and laundry services	8970-9090
49	Membership associations and organizations	9160-9190
50	Private households	9290
51	Public administration	9370-9590

**Industry Codes (TEIO1ICD)**

2002 Census Industry Codes available at <http://www.bls.gov/tus/census02iocodes.pdf>

2007 Census Industry Codes available at <http://www.bls.gov/tus/census07icodes.pdf>

**Occupation Codes (TEIO1OCD)**

Available at <http://www.bls.gov/tus/census02ocodes.pdf>

## APPENDIX B

### Detailed Industry Code using the 2007 Census Industry Classification System (TRDTIND1)

TRDTIND1	Description	TEIO1ICD
1	Agriculture	0170-0180, 0290
2	Forestry, logging, fishing, hunting, and trapping	0190-0280
3	Mining	0370-0490
4	Construction	770
5	Nonmetallic mineral product manufacturing	2470-2590
6	Primary metals and fabricated metal products	2670-2990
7	Machinery manufacturing	3070-3290
8	Computer and electronic product manufacturing	3360-3390
9	Electrical equipment, appliance manufacturing	3470, 3490
10	Transportation equipment manufacturing	3570-3690
11	Wood product manufacturing	3770-3870
12	Furniture and fixtures manufacturing	3890
13	Miscellaneous and not specified manufacturing	3960-3990
14	Food manufacturing	1070-1290
15	Beverage and tobacco product manufacturing	1370, 1390
16	Textile, apparel, and leather manufacturing	1470-1790
17	Paper manufacturing and printing	1870-1990
18	Petroleum and coal products manufacturing	2070, 2090
19	Chemical manufacturing	2170-2290
20	Plastics and rubber products manufacturing	2370-2390
21	Wholesale trade	4070-4590
22	Retail trade	4670-5790
23	Transportation and warehousing	6070-6390
24	Utilities	0570-0690
25	Publishing industries (except internet)	6470-6490
26	Motion picture and sound recording industries	6570, 6590
27	Broadcasting (except internet)	6670
28	Internet publishing and broadcasting	6672
29	Telecommunications	6680, 6690
30	Internet service providers and data processing services	6695
31	Other information services	6770, 6780
32	Finance	6870-6970
33	Insurance	6990
34	Real estate	7070
35	Rental and leasing services	7080-7190
36	Professional, scientific, and technical services	7270-7490
37	Management of companies and enterprises	7570
38	Administrative and support services	7580-7780
39	Waste management and remediation services	7790
40	Educational services	7860-7890

41	Hospitals	8190
42	Health care services, except hospitals	7970-8180, 8270, 8290
43	Social assistance	8370-8470
44	Arts, entertainment, and recreation	8560-8590
45	Traveler accommodation	8660, 8670
46	Food services and drinking places	8680, 8690
47	Repair and maintenance	8770-8890
48	Personal and laundry services	8970-9090
49	Membership associations and organizations	9160-9190
50	Private households	9290
51	Public administration	9370-9590

**Industry Codes (TEIO1ICD)**

2002 Census Industry Codes available at <http://www.bls.gov/tus/census02iocode.pdf>

2007 Census Industry Codes available at <http://www.bls.gov/tus/census07iocode.pdf>

**Occupation Codes (TEIO1OCD)**

Available at <http://www.bls.gov/tus/census02iocode.pdf>