

# Stay connected and gain insights with cloud managed Wi-Fi



Today's consumers expect to connect to the Internet wherever they go. Studies show that Wi-Fi availability affects consumer behavior and can play a role in where they choose to do business. For restaurants, patrons who want to stay connected to work or friends during meals will make a point to pick a place to eat that offers complimentary Wi-Fi. But Wi-Fi doesn't just benefit the consumer, it can also lead to deeper customer relationships and support new service concepts.

## Introducing AT&T Business Wi-Fi

AT&T Business Wi-Fi helps you deliver a connected full-service experience. Our highly secure solution delivers a fully-integrated, managed Wi-Fi service that connects and protects your business and consumers.

### Benefits

- Show your customers you understand their need to stay connected
- Secure a competitive advantage for your business
- Attract new customers
- Improve efficiency for back-office operations
- Enable innovative forms of service delivery

### Features

- Multiple access points
- Wi-Fi coverage for your entire store and back of house
- Two public networks: "att-wifi" and your own branded network name
- Highly secure back-office network
- Scalable model – install in a few or thousands of locations
- Professional or self-installation
- 24/7 technical and network support
- Customizable connection pages
- URL filtering
- Centralized management and reporting
- Compatibility with any Internet provider

## It adds value for marketing and management

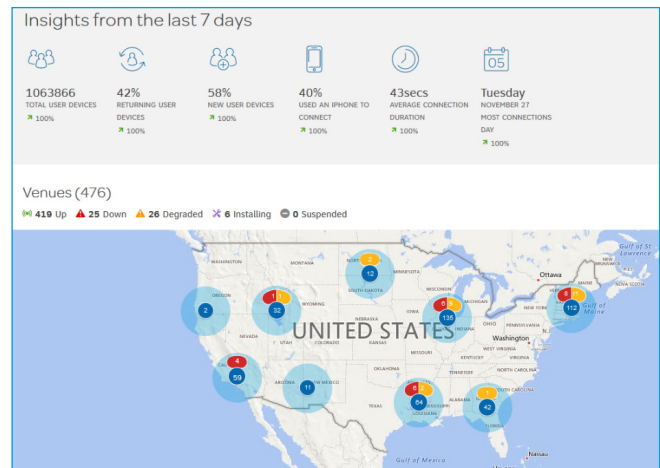
AT&T Business Wi-Fi can help with your marketing efforts. When users click “connect,” they see a customizable connection page that associates your brand with the complimentary Wi-Fi you provide. Your locations will also be listed in the AT&T Wi-Fi Hot Spot Locator, a directory that helps consumers find businesses with Wi-Fi access. And we can provide professional marketing collateral, including window stickers and tent cards.

## Gain insight into how your guests use Wi-Fi

AT&T Business Wi-Fi provides a portal for access to centralized reporting. It shows you network status and anonymous aggregated customer information in easy to read, graphical formats. Our enterprise Wi-Fi solution gives you valuable information that can help you engage with your customers and serve them better.

## Scale easily for highly secure connections

Need to integrate private and public Wi-Fi networks with a highly secure IPsec VPN for remote locations? AT&T Multiservice VPN gives you the capability to enable private applications over a highly secure network to meet your business needs. And, the Wi-Fi network equipment delivers both the Wi-Fi connection and the IPsec capability in one access point.



## It's easy to deploy

Professional and self-installation options are available, based on your needs. Select from three flexible management options for equipment and services. If you prefer a capex model, you can purchase the equipment, and AT&T will manage it at a reduced monthly fee per access point.

## Get the AT&T advantage

AT&T is a preeminent provider of Wi-Fi services, delivering highly reliable and scalable connectivity, with 24/7 support for both your end users and your employees. We can handle a variety of deployment types and support a wide array of applications. We'll take care of everything from network design to installation. Get the high-quality service you want, from a company you trust. AT&T.

For more information, visit [att.com/wifi](http://att.com/wifi) or call 877.542.8666

Share this with your peers