

# Bear Valley Electric Service, Inc. Emergency & Disaster Response Plan

March 31, 2022

Paul Marconi

Digitally signed by Paul Marconi  
Date: 2022.03.30 13:29:45  
-07'00'

Approved by: \_\_\_\_\_

Paul Marconi, President, Treasurer, & Secretary

# Bear Valley Electric Service, Inc. Emergency & Disaster Response Plan

1. Purpose and Introduction.
  - 1.1. Plan Goals
  - 1.2. Plan Vision
  - 1.3. Plan Policy
  - 1.4. Plan Responsibility
  - 1.5. General Overview
  - 1.6. Definitions
  
2. Emergency & Disaster Response Organization
  - 2.1. Standardized Emergency Management System(SEMS)
  - 2.2. BVES Emergency Organization
  - 2.3. BVES Emergency Operations Center (EOC)
  - 2.4. Roles and Responsibilities
    - 2.4.1. Incident Commander
    - 2.4.2. Public Information Group
    - 2.4.3. Operations Group
      - 2.4.3.1. Emergency Manager
      - 2.4.3.2. Strategic Operations Supervisor (SOS)
      - 2.4.3.3. Emergency Service Representative (ESR)
      - 2.4.3.4. System Monitor
      - 2.4.3.5. Damage Assessment Team (DAT)
      - 2.4.3.6. Line Crews
      - 2.4.3.7. Engineering Technical Support
      - 2.4.3.8. Bear Valley Power Plant (BVPP) Operators
      - 2.4.3.9. IT Operations Support
    - 2.4.4. Logistics Group
    - 2.4.5. Planning Group
    - 2.4.6. Finance & Administration Group
  - 2.5. Plan Changes
  
3. Emergency & Disaster Response Event Preparations
  - 3.1. Preparations
  - 3.2. Emergency Response Preparations Checklist
  - 3.3. Contingency Operating Procedures
  - 3.4. Mobile Emergency Generation
  - 3.5. Material and Equipment
  - 3.6. Vehicles
  - 3.7. Contracts for Services
  - 3.8. Mutual Aid
    - 3.8.1. California Utilities Emergency Association
    - 3.8.2. Mountain Mutual Aid Association

**Bear Valley Electric Service, Inc.**  
**Emergency & Disaster Response Plan**

- 3.9. Communications Layers and Message Deck
- 3.10. Staff Roster and Recall List
- 3.11. Key External Contacts List
- 3.12. Emergency Operations Center and BVES Main Facility
- 4. Emergency & Disaster Response Procedures
  - 4.1. Emergency Response Plan Implementation and Emergency Operations Center Activation
    - 4.1.1. Response Levels
    - 4.1.2. Plan Activation
  - 4.2. Essential Elements of Information (EEI)
  - 4.3. Restoration Strategy
    - 4.3.1. Restoration Strategy Assumptions
    - 4.3.2. Restoration Priorities
    - 4.3.3. Restoration Progression
    - 4.3.4. Loss or Significant Reduction of Supply
    - 4.3.5. Downed Wire Response
    - 4.3.6. Sub-Transmission and Distribution (T&D) Casualties
  - 4.4. EOC and Emergency Response Workflows
    - 4.4.1. EOC Setup
    - 4.4.2. EOC Staffing
    - 4.4.3. Managing Field Activities
    - 4.4.4. Workflows
    - 4.4.5. Situation Report
    - 4.4.6. Damage Assessments
    - 4.4.7. Work Orders
  - 4.5. Resources
    - 4.5.1. California Utilities Emergency Association (CUEA)
    - 4.5.2. Contracted Services
    - 4.5.3. Big Bear Valley Mountain Mutual Aid Association (“MMAA”)
  - 4.6. Catastrophic Events Memorandum Account (CEMA)
  - 4.7. Evacuation
    - 4.7.1. Critical Workers
    - 4.7.2. Evacuation Order
  - 4.8. End State
  - 4.9. After Action Reports
  - 4.10. Annual Emergency Response Plan Training and Exercise

**Bear Valley Electric Service, Inc.  
Emergency & Disaster Response Plan**

- 4.10.1. Annual Training
  - 4.10.2. Annual Exercise
  - 4.10.3. Exercise Notice
  - 4.10.4. Exercise Evaluation
  - 4.10.5. Emergency Response Outreach Training
5. Emergency & Disaster Response Communications Plan
- 5.1. Strategy Overview
  - 5.2. Establish Multiple and Effective Communication Channels
    - 5.2.1. Outbound Communications
    - 5.2.2. Inbound Communications
    - 5.2.3. Internal Communications
  - 5.3. Conduct Pre-Incident Outreach and Education
    - 5.3.1. City and County Outreach
    - 5.3.2. General Public, Customer and Stakeholder Outreach and Education (before an emergency)
  - 5.4. Provide Outreach in Prevalent Languages
  - 5.5. Provide Emergency Incident Communications
    - 5.5.1. Set Expectations and Develop Trust
    - 5.5.2. Notify and Engage Key Stakeholders
    - 5.5.3. Notify Customers and General Public
    - 5.5.4. Media Engagement Procedures
      - 5.5.4.1. Authorized Media Engagement
      - 5.5.4.2. Press Release Content
      - 5.5.4.3. Press Release Protocols
    - 5.5.5. Post Emergency Event Close-out Statement
  - 5.6. Reports to the Commission
6. Customer Support in Emergencies
- 6.1. Support for Low Income Customers
  - 6.2. Billing Adjustments
  - 6.3. Deposit Waivers
  - 6.4. Extended Payment Plans
  - 6.5. Suspension of Disconnection and Nonpayment Fees
  - 6.6. Repair Processing and Time
  - 6.7. Access to Utility Representatives
  - 6.8. Access to Outage Reporting and Emergency Communications

**List of Figures**

Figure 1-1: EDRP Goals

# **Bear Valley Electric Service, Inc. Emergency & Disaster Response Plan**

- Figure 2-1: SEMS Organization
- Figure 2-2: BVES Emergency Organization
- Figure 5-1: Press Release Protocol

## **List of Tables**

- Table 2-1: Possible Alternate Emergency Operation Centers
- Table 3-1: List of Minimum Contingency Contracted Services
- Table 3-2: Bear Valley Mountain Mutual Aid Association Membership
- Table 3-3: Key External Contacts
- Table 4-1: BVES Outage and Emergency Response Levels
- Table 4-2: Essential Elements of Information
- Table 4-3: Restoration Priorities for Sub-Transmission Circuits, Substations, and Distribution Circuits
- Table 4-4: BVES System Sources of Power
- Table 4-5: Actions for Loss of Supplies
- Table 4-6: Downed Wire Response
- Table 4-7: CUEA Mutual Assistance Process

## **List of Appendices**

- Appendix A: EOC Preparedness and Setup Checklist
- Appendix B: Emergency Response Preparations Checklist
- Appendix C: Contingency Contracted Services
- Appendix D: BVES Staff Roster and Recall List
- Appendix E: Key External Contacts List
- Appendix F: Emergency Response Workflows
- Appendix G: Sample Situation Report (SITREP)
- Appendix H: Sample Damage Assessment Form
- Appendix I: Sample Work Order Jacket
- Appendix J: Sample Mutual Assistance Agreement Letter

# Bear Valley Electric Service, Inc. Emergency & Disaster Response Plan

1. **Purpose and Introduction.** The Emergency & Disaster Response Plan (EDRP) is provided to all Bear Valley Electric Service, Inc. (“BVES”) employees to ensure an efficient, effective and uniform response during an emergency situation. BVES recognizes the importance of an integrated EDRP in order to safely provide for the energy needs of our customers and the requirements of our stakeholders in the event of an emergency.

The EDRP outlines BVES’ philosophy and procedures for managing major emergencies that may disrupt electric service to our customers or threaten the health and safety of the people in the communities we serve. The EDRP further establishes the structure, processes and protocols for the BVES’s emergency response and identifies departments and individuals that are directly responsible for that response and critical support services. In addition, it provides a management structure for coordination and deployment of the essential resources necessary for the response.

The EDRP is designed to provide a framework for managing and responding to:

- Large outages
- Numerous smaller outages
- Potential for large outages
- Potential for numerous smaller outages
- Any combination of the above

The EDRP may be invoked as a precautionary measure when there is a strong potential for outages or in response to actual outages. The EDRP is designed to be implemented as needed in conjunction with other procedures, plans, and policies such as:

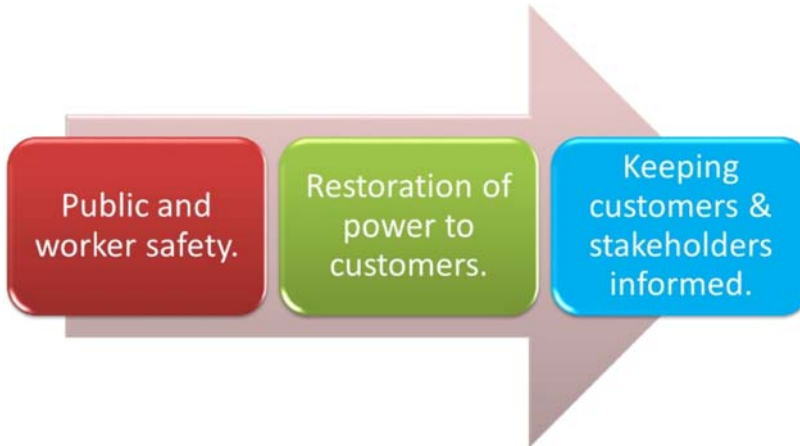
- Public Safety Power Shutdown Plan
- Wildfire Mitigation Plan
- Field Operations and Engineering Procedures
- Customer Service Procedures
- Other organizations such as State, County, and City Emergency Disaster Plans

The EDRP complies with the requirements set forth in the Public Utilities Commission of the State of California’s General Order No. 166, Standards for Operation, Reliability, and Safety during Emergencies and Disasters.

1.1. **Plan Goals.** When an emergency occurs, BVES’ response actions are guided by the following overriding emergency goals (in order of priority):

- **Safety:** Protect the life-safety of our customers, employees and the general public.
- **Restoration of Power:** Restore electric service to customers in a safe and timely manner.
- **Communications:** Keep customers, stakeholders, and staff informed.

# Bear Valley Electric Service, Inc. Emergency & Disaster Response Plan



**Figure 1-1: EDRP Goals**

1.2. **Plan Vision.** BVES strives to meet customer needs through effective risk assessment, mitigation, preparedness, response and communications. Our vision is to achieve excellence in emergency management performance.

1.3. **Plan Policy.** BVES strives to utilize effective emergency management principles that enhance the BVES's ability to provide safe and reliable electric power and its ability to communicate timely and accurate information to customers and stakeholders by:

- Conducting effective risk assessments for operating and business functions;
- Developing appropriate prevention or risk mitigation strategies;
- Implementing comprehensive emergency preparedness programs;
- Responding with appropriate resources to address emergencies;
- Communicating with customers and other stakeholders with timely and accurate information;
- Recovering from events safely and expeditiously; and
- Improving continuously.

Since major outage events and emergencies are rarely similar in all respects, the EDRP is constructed in such a way to provide BVES management with a trained and operationally ready workforce and a response operations process that may be employed as required to deal with the unique aspects of each major outage and emergency event.

The effectiveness of the EDRP is based on BVES' commitment to prepare for, to implement, and to review procedures after each implementation. An after action review process shall facilitate continuous improvement in the BVES's response and restoration processes.

Execution of the appropriate response to affect rapid and safe recovery is dependent upon the scalability of this plan. For example, storm intensities and the number of customers affected vary and, therefore, the level of recovery resources committed to each event is adjusted as appropriate even though the operational concepts remain consistent.

## **Bear Valley Electric Service, Inc. Emergency & Disaster Response Plan**

1.4. **Plan Responsibility.** It is the responsibility of all Managers and Supervisors to ensure the EDRP is reviewed by all staff and is updated when appropriate. Specific responsibilities are provided throughout the EDRP.

1.5. **General Overview.** BVES customers receive electric service through an overhead and underground distribution system. Extreme weather events such as heavy rain, hail, snow, ice, lightning, high winds, and/or extreme dry heat may adversely impact the integrity of the distribution system, resulting in occasional interruptions of electric service. The distribution system is also susceptible to damages as a result of major disasters, such as earthquakes, flooding, wildfires, and mud and rock slides. Furthermore, in the interest of public safety, BVES may deem it necessary to proactively de-energize large portions of the distribution system to protect the public; for example, BVES may de-energize circuits or portions of circuits during extreme fire threat weather conditions. BVES normally imports power to its service area via Southern California Edison's (SCE) transmission lines. Therefore, the BVES service area may be susceptible to outages caused by events outside of its services area. All of the above may result in major power outages of varying extent and length depending on the severity of the event. Since electricity is a critical element in our daily lives, prompt restoration is a reasonable customer expectation and a BVES goal. In the case of major disasters, rapid and efficient restoration of power; especially to critical infrastructure, is essential to overall community disaster recovery.

The response to customer outages caused by severe weather events, other disasters or events affecting power delivery to the BVES service area is predicated on recognizing and understanding the magnitude of the event as well as the availability of resources to support the restoration process. This plan has been designed to provide a systematic organized response plan for the purpose of promoting a safe and efficient recovery from any of those conditions. Since the potential of sustaining damages is highest for storm situations, the plan specifically addresses these situations but it may easily be adapted to major outages caused by other disasters or causes.

It is also recognized that no plan can possibly predict and cover every emergency situation. Therefore, the EDRP provides a structure that is based on a set of reasonable assumptions for the most likely emergencies requiring emergency response; but it also provides the BVES's Incident Commander the authority, flexibility, and discretion to alter the BVES's emergency response to tailor it to the specific emergency situation in order to optimize the utilization of BVES resources and to achieve the emergency response goals in an effective and efficient manner.

A critical component of the EDRP is close coordination with stakeholders that depend on BVES's service and assistance for their response actions and who may, also, be able to assist BVES in its response actions. The coordination must occur in developing the plan, training on the plan, executing the plan, and in plan refinements. Some of BVES's major stakeholders include:

- Local officials (City of Big Bear Lake (CBBL) and San Bernardino County)
- State officials (California Public Utilities Commission)
- San Bernardino County Office of Emergency Services (County OES)
- Big Bear Fire Department



## **Bear Valley Electric Service, Inc. Emergency & Disaster Response Plan**

- California Department of Forestry and Fire Protection (CAL FIRE)
- U.S. Forest Service
- San Bernardino County Sheriff's Department Big Bear Lake Patrol Station
- California Highway Patrol (CHP) Arrowhead Area
- California Department of Transportation (Caltrans)
- Big Bear Area Regional Wastewater Agency (BBARWA)
- Big Bear City Community Services District (CSD)
- Big Bear Lake Water Department (DWP)
- Big Bear Municipal Water District (MWD)
- Southwest Gas Corporation
- Bear Valley Community Hospital
- Bear Valley Unified School District
- Big Bear Chamber of Commerce
- Big Bear Airport District
- Big Bear Mountain Resort
- Various media and communications companies

Accurate, effective and timely communications with key stakeholders is critical in emergency response and, therefore, it is essential that business relationships be developed before emergency response is necessary. Understanding stakeholders' key staff, contact information, roles and responsibilities, and capabilities are extremely useful in achieving successful emergency response.

### **1.6. Definitions.**

**Accessible:** A condition which permits safe and legal access.

**Access and Functional Needs Populations:** Refers to those populations with access and functional needs as set forth in Government Code § 8593.3. Access and functional needs population consists of individuals, including but not limited to, individuals who have developmental or intellectual disabilities, physical disabilities, chronic conditions, injuries, limited English proficiency or who are non-English speaking, older adults, children, people living in institutionalized settings, or those who are low income, homeless, or transportation disadvantaged, including, but not limited to, those who are dependent on public transit or those who are pregnant.

**Appropriate Regulatory Authority:** The agency or governmental body responsible for regulation or governance of the utility.

**Critical Customers:** Customers requiring electric service for life sustaining equipment.

**Emergency or Disaster:** An event which is the proximate cause of a major outage, including but not limited to storms, lightning strikes, fires, floods, hurricanes, volcanic activity, landslides, earthquakes, windstorms, tidal waves, terrorist attacks, riots, civil disobedience, wars, chemical spills, explosions, and airplane or train wrecks.

## **Bear Valley Electric Service, Inc. Emergency & Disaster Response Plan**

**Essential Customers:** Customers representing critical infrastructure and Public Safety Partners.

**Major Outage:** Consistent with Public Utilities Code Section 364, a major outage occurs when 10 percent of the electric utility's serviceable customers experience a simultaneous, non-momentary interruption of service. For utilities with less than 150,000 customers within California, a major outage occurs when 50 percent of the electric utility's serviceable customers experience a simultaneous, non-momentary interruption of service.

**Measured Event:** A Measured Event is a Major Outage (as defined herein), resulting from non-earthquake, weather-related causes, affecting between 10% (simultaneous) and 40% (cumulative) of a utility's electric customer base. A Measured Event is deemed to begin at 12:00 a.m. on the day when more than one percent (simultaneous) of the utility's electric customers experience sustained interruptions. A Measured Event is deemed to end when fewer than one percent (simultaneous) of the utility's customers experience sustained interruptions in two consecutive 24-hour periods (12:00 a.m. to 11:59 p.m.); and the end of the Measured Event in 11:59 p.m. of that 48-hour period.

**Public Safety Partners:** First/emergency responders at the local, state and federal level, water, wastewater and communication service providers , community choice aggregators (CCAs), affected publicly-owned utilities (POUs)/ electrical cooperatives, tribal governments, the Commission, CalOES and CAL FIRE.

**Safety Standby:** Interim activities undertaken to mitigate immediate public safety hazards

**Serviceable Customer:** A customer prepared and properly equipped to receive service where both the customer's electrical service facilities and those facilities of the utility necessary to serve the customer can be legally and physically accessed in a safe manner.

**Sustained Outage:** An electric service interruption (0 voltage) lasting greater than 5 minutes.

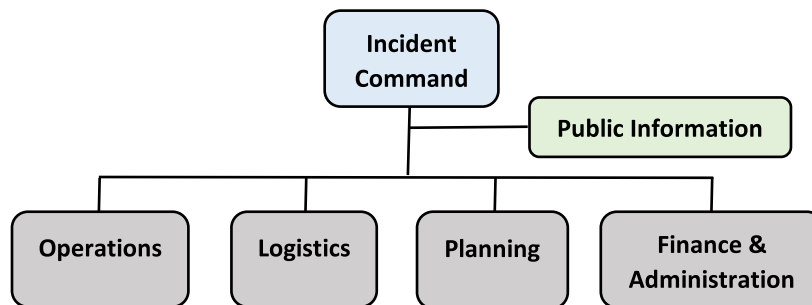
## Bear Valley Electric Service, Inc. Emergency & Disaster Response Plan

2. **Emergency Response Organization.** The EDRP requires that in responding to emergencies, the BVES's staff shall be organized largely based on the Standardized Emergency Management System (SEMS) as interpreted by the BVES. The SEMS structure utilized by BVES is a utility compatible Incident Command Structure (ICS) framework designed to manage emergency incidents and events.

2.1. **Standardized Emergency Management System.** SEMS is an emergency preparedness and response system that has been endorsed by the State of California. It is the cornerstone of California's emergency response system and the fundamental structure for the response phase of emergency management. It unifies all elements of California's emergency management community into a single integrated system and standardizes key elements. Additionally, it provides a common structure for all organizations responding to an emergency situation and a means of systematic planning. The benefits of using the SEMS include:

- Use of common terminology among agencies.
- Use of parallel organizational functions among agencies.
- Provides a standard means of systematic planning.

The basic SEMS organization structure is shown in Figure 2-1, SEMS Organization:



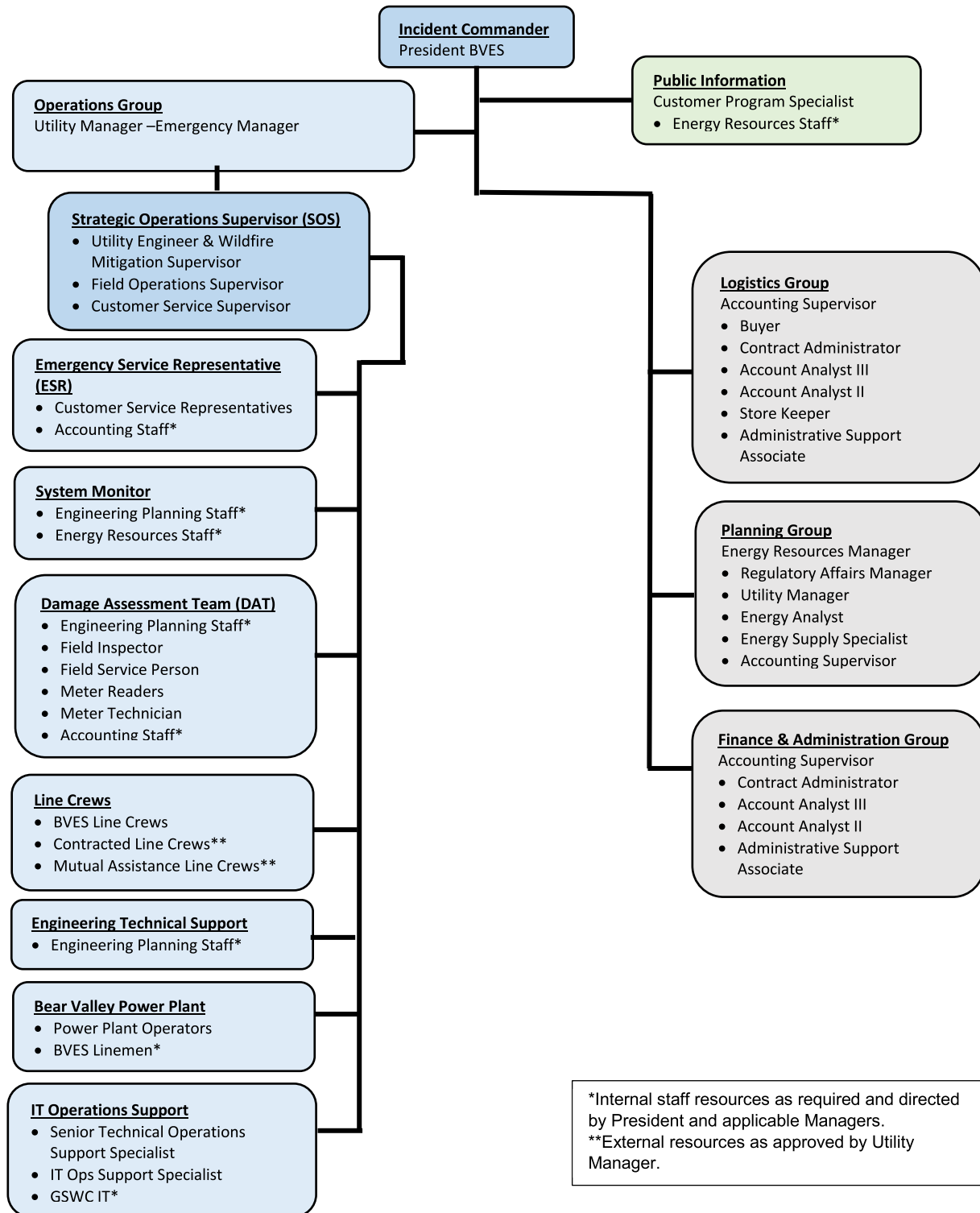
**Figure 2-1: SEMS Organization**

By organizing the response team along the SEMS structure, the BVES emergency response team is able to coordinate with other government and agencies via their corresponding groups. For example, BVES Operations would coordinate directly with the City of Big Bear Lake Emergency Operations Center or the San Bernardino County OES Operations Groups as applicable. Additionally, when BVES sends a representative to these two centers the representative shall already have a good understanding of the emergency response organization.

2.2. **BVES Emergency Organization.** The organization chart presented below in Figure 2-2, BVES Emergency Organization, provides the BVES Emergency Organization structure for the full mobilization (Level 1) of BVES' staff in responding to emergencies per this plan. It is the intent that this organizational structure would operate out of an Emergency Operations Center (EOC) established by BVES and be sustainable for long-term emergency response activities.

# Bear Valley Electric Service, Inc. Emergency & Disaster Response Plan

## BVES Emergency Organization



**Figure 2-2: BVES Emergency Organization**

The specific description of roles and responsibilities for the positions in the BVES Emergency Organization are provided in Section 2.4.

## **Bear Valley Electric Service, Inc. Emergency & Disaster Response Plan**

2.3. **BVES Emergency Operations Center (EOC).** An EOC shall be designated for BVES staff use in the event of an emergency. The EOC is the central command and control facility responsible for carrying out the principles of emergency preparedness and emergency response functions described in the EDRP, ensuring public and worker safety, continuity of operations, and timely communications with customers and stakeholders.

An EOC is primarily responsible for strategic direction and operational decisions. Due to the relatively small size of BVES, the Strategic Operations Supervisor (SOS) under the direction of the Operations Group at the EOC shall provide tactical emergency response direction and directly control field assets. The activities under the SOS' management at the EOC shall include all dispatch functions to include customer communications and field operations. For the purpose of the EDRP, when "dispatch" functions are referred to the EOC they are intended for the SOS and supporting team at the EOC.

The common functions of the EOC is to collect, gather and analyze data; make decisions that protect public and worker safety and property; safely maintain and/or restore continuity of operations, within the scope of applicable regulations and laws; and disseminate those decisions to all concerned customers and stakeholders in a timely manner.

2.3.1. The EOC is where the Incident Command, Operations, Planning, Logistics, Financial & Administration, and Public Information groups are located and come together. It serves as the central point for:

- Information gathering and dissemination.
- Directing emergency and restoration operations at both the strategic and tactical level.
- Coordinating with other external agencies and stakeholders.
- Developing and issuing customer and stakeholder communications.
- Evaluating available resources and requesting or relinquishing resources as appropriate.

2.3.2. The EOC shall meet the following requirements:

- Be available for immediate occupancy.
- Have access to backup electrical power.
- Contain access to multiple communication systems such as telephones, mobile phones, VHF radio, internet service, Interactive Voice Response (IVR), etc.
- Be equipped with emergency supplies, system maps and operating information.
- Be capable of sustaining long-term emergency response.

2.3.3. The primary EOC for BVES shall be located at BVES' Main Office at 42020 Garstin Dr., Big Bear Lake, CA 92315 in the "Main Conference Room."

2.3.3.1. The Utility Manager is responsible for ensuring the primary EOC is ready for immediate occupancy. Appendix A, EOC Preparedness and Setup Checklist, provides a list of equipment, capabilities, materials and supplies that should be available to the primary EOC. Some items need not be located in the EOC, but should be in close proximity and readily accessible to EOC staff. The Senior Technical Operations Support Specialist shall maintain

## Bear Valley Electric Service, Inc. Emergency & Disaster Response Plan

Appendix A up to date as configuration and technology changes are implemented and provide the Administrative Support Associate the latest version of the checklist. The checklist will also be maintained in the EOC.

2.3.3.2. If the primary EOC will not be ready for immediate occupancy, the Utility Manager shall establish an alternate EOC that is ready for immediate occupancy and shall notify BVES staff. Table 2-1 below provides a list of possible alternate EOCs to be considered.

**Table 2-1: Possible Alternate Emergency Operation Centers**

<u>Location</u>	<u>To Be Considered</u>
Operations & Planning spaces at the BVES Main Office	Primary EOC not available. Also consider this site, when scope of emergency response activation is reduced (such as Level 2 activation) and all or most activity is carried out by Field Operations.
BVES's General Office in San Dimas, California	When evacuation of the BVES service area is ordered.
State or County's Incident Commander's base camp	When the BVES Main Office is not accessible.
Other suitable area designated by the Utility Manager	When primary EOC is not accessible or available and the above options are not the optimal location.

2.3.3.3. In selecting an alternate EOC location, the Utility Manager shall at a minimum consider the following factors:

- Safety of BVES emergency response staff
- Location of hazards and potential movement of hazards
- Location of the emergency
- Communications capability and ability to coordinate efficiently with stakeholders
- Location and accessibility to BVES resources (staff, equipment, material, etc.)

2.4. **Roles and Responsibilities.** This section provides the general intended roles and responsibilities of the BVES Emergency Organization shown in Figure 2-2. It should be noted that the Incident Commander and Group Leaders have the authority to modify roles and responsibilities of those under their responsibility to optimally respond to the specific emergency event. When modifications are made, these should be included during the after action report for the event so that possible changes to the EDRP may be considered. BVES has a small staff, therefore, in the interest of sustainability, efficiency and effectiveness, some staff are "dual hatted" and may be assigned multiple roles and responsibilities.

### 2.4.1. Incident Commander

2.4.1.1. President, BVES is the primary BVES staff assigned. Alternates that may be assigned include: Utility Manager, Energy Resources Manager, Regulatory Affairs Manager, or other BVES officials as directed by the Chief Executive Officer (CEO).

2.4.1.2. Incident Commander reports directly to the CEO.

## **Bear Valley Electric Service, Inc. Emergency & Disaster Response Plan**

2.4.1.3. Overall responsible for organizing and directing the EDRP by providing strategic direction for the emergency response. Activities associated with the Incident Commander are mostly strategic in nature and include, but are not limited to:

- Direct EOC activation. Based on the emergency level and the particular situation surrounding the emergency, may direct partial activation of the EOC.
- Authorize de-activation of the EOC (or any partial de-activation).
- Authorize use of alternate EOC location when appropriate.
- Provide timely and accurate updates to Senior BVES management (CEO, CFO, VP Regulatory Affairs, etc.) of emergency response.
- Approve and/or conduct high-level communications with federal, state, county, and/or city officials as well as other utilities and non-governmental organization (NGOs).
- Approve and/or conduct external communications with media and the public.
- Approve regulatory reports for outages, incidents and accidents (GO-95, GO-128 & GO-166). Work closely with Regulatory Affairs at the General Office (GO).
- Approve situation reports that may be requested by external organizations such as California Utility Emergency Association (CUEA), State of California Office of Emergency Services (OES), San Bernardino County OES, City of Big Bear Lake, California Public Utilities Commission (Safety Enforcement Division and Energy Division), local Incident Commander, etc.
- Ensure Operations, Planning, Logistics, and Finance & Administration Groups (SEMS) are properly resourced to respond to emergency.
- Lead periodic update meetings with the BVES SEMS Group Leaders.
- Approve requests for mutual aid.
- Approve use of emergency contracting and procurement provisions.

### 2.4.2. Public Information Group.

2.4.2.1. Customer Program Specialist is the primary BVES staff assigned to this group. Alternates who may be assigned include: Energy Supply Specialist, Customer Service Supervisor, or others as designated by the Incident Commander. Generally, the Customer Program Specialist and Energy Supply Specialist (or other staff assigned) shall alternate shifts.

2.4.2.2. Public Information reports directly to the Incident Commander on all public information issues and coordinates directly with the leaders of the Operations, Planning, Logistics and Finance & Administration Groups to stay informed on the latest status of the emergency response. Attends BVES SEMS leadership meetings.

2.4.2.3. Public Information facilitates communication with all stakeholder groups, including the news media and provides a variety of public information services during an electric system emergency. Activities associated with Public Information include, but are not limited to:

- Develop public engagement strategy and directs all aspects of public messaging.
- Keep customers, stakeholders, BVES management and employees informed on the status of the emergency response including extent of outages, cause of outages, damage and

## **Bear Valley Electric Service, Inc. Emergency & Disaster Response Plan**

casualty assessments, restoration efforts in progress and planned, estimated time to restore service, and updates to the emergency response through widely available communications channels.

- Act as the central point of contact for any external public inquiries.
- Prepare and distribute public information releases for media, website, social media, interactive voice response and two-way text messages, state and local government, and other BVES stakeholders.
- Prepare and distribute responses to media inquiries.
- Coordinate with the General Office and other stakeholder public information officials.
- Work closely with the Incident Commander, public relations contractor and General Office (Regulatory Affairs) on public engagement.
- Work closely with other SEMS Groups to be informed of latest information.
- Provide line crews, customer service and other staff who operate in the field or interact directly with customers with the latest information to be shared with public.
- Coordinate participation in joint press conferences with other stakeholders as needed or directed.
- Organize press conferences as needed or as directed.
- Assist in preparing the Incident Commander and other BVES staff for press conferences and interviews.
- Follow media and social media for discussion of BVES and develop rapid response to dispel erroneous information.
- Update BVES website, social media, local media, interactive voice response and two-way text messages, and other communications platforms as conditions change.
- Activate advertising campaigns with local media when appropriate.

2.4.3. Operations Group. The Operations Group is overall responsible for all of the emergency response actions in the field necessary to safely restore service to customers. As such, this group is made up of customer service, line crews, field operations, engineering and planning, and power generation staff and contractors. The Emergency Manager leads this group.

2.4.3.1. Emergency Manager. Utility Manager is the primary BVES staff assigned. Alternates who may be assigned include: Energy Resource Manager, Utility Engineer & Wildfire Mitigation Supervisor and Field Operations Supervisor. The Emergency Manager reports directly to the Incident Commander. Activities associated with the Emergency Manager are partly strategic and partly tactical in nature and include, but are not limited to:

- Ensure public, employee and contractor safety is top priority in all restoration activities.
- Authorize deviations to the EDRP as necessary to safely, efficiently and effectively execute restoration activities.
- Attend BVES SEMS leadership meetings.
- Issue the work schedule and shift rotations for all staff and contractors assigned to the Operations Group.
- Direct the number of Emergency Service Representatives, System Monitors, Damage Assessment Teams, and Line Crews to be assigned per shift.
- Ensure staff and contractors are adequately rotated to allow for rest and safe operations.
- Authorize overtime labor expense as needed.



## **Bear Valley Electric Service, Inc. Emergency & Disaster Response Plan**

- Direct all restoration and emergency response activities in the field.
- Keep Incident Commander and Public Information informed of progress.
- Drive to obtain and communicate “estimated time of restoration” (ETR) for outages and update this information as the situation progresses.
- Coordinate with other SEMS Groups.
- Constantly evaluate restoration progress and optimize utilization of available resources to safely, efficiently and effectively restore service.
- Identify and request additional resources when needed and stand-down resources when no longer required.
- Coordinate restoration activities with other external entities (City, County, Fire Department, Sheriff, CHP, Forestry Service, CALTRANS, other utilities, contractors, etc.).
- Assign and dispatch a knowledgeable BVES representative to local government and/or agency Incident Command as needed.
- Ensure outages, incidents, and accidents are properly documented.
- Assist in preparing regulatory reports for outages, incidents, and accidents (GO-95, GO-128 & GO-166).
- Prepare external situation reports as requested.
- Ensure cost recovery records and documentation for restoration work are being maintained as requested by the Finance and Administration Group.
- Review weather forecast and other external information to optimize restoration response.
- Prepare mutual aid inquiries and requests.
- Communicate logistics requirements to complete restoration activities.
- Work collaboratively with other stakeholder organizations and the General Office as applicable on logistics issues.
- Perform other operations activities as directed by the Incident Commander.

2.4.3.2. Strategic Operations Supervisor (SOS). The Field Operations Supervisor, Utility Engineer & Wildfire Mitigation Supervisor, and Customer Service Supervisor are the primary BVES staff assigned. Alternates who may be assigned include: Utility Manager and the Regulatory Compliance Project Engineer. The SOS reports directly to the Emergency Manager. Activities associated with the SOS are mostly tactical in nature and include, but are not limited to:

- Ensure public, employee and contractor safety is top priority in all restoration activities.
- Maintain the “common operational picture” in the EOC. Utilizes the Outage Management System (OMS), Supervisory Control and Data Acquisition (SCADA), CC&B, GIS applications, and other applications to manage information and data in support of restoration efforts.
- Act as the Emergency Manager’s direct representative in the EOC and direct all operations activities to include all dispatch functions while the EOC is activated. For the purpose of this EDRP, the SOS is equivalent to “Dispatch” and the terms may be used interchangeably.
- Function as the central Dispatch during EDRP implementation. Receive, prioritize, dispatch, and resolve all Field Activities (FA’s) and Transmission and Distribution (T&D) system problems reported by other means per BVES priorities identified in the EDRP.
- Direct all restoration and emergency response activities in the field.

## **Bear Valley Electric Service, Inc. Emergency & Disaster Response Plan**

- Direct and supervise the Emergency Service Representative(s), System Monitor, Damage Assessment Team(s), Line Crews (BVES, contracted and/or mutual aid), Bear Valley Power Plant Operators, IT Operations Support and Contracted Services (for example, snow removal, vegetation management, etc.) in all aspects of EDRP activities.
- Ensure resources are safely, efficiently and effectively deployed per the EDRP priorities and as directed by the Emergency Manager.
- Recommend to the Emergency Manager whether to increase, maintain, or decrease restoration resources to safely, efficiently, and effectively execute the restoration activities.
- Properly document outages, incidents, and accidents.
- Maintain cost recovery records and documentation of work completed as requested by the Finance Group at the General Office.
- Review weather forecast and other external information to optimize restoration response.
- Develop logistics requirements necessary to complete restoration activities.
- Keep Emergency Manager and Public Information informed of progress.
- Update Situation Report.
- Dispatch the Bear Valley Power Plant (BVPP) as needed. Coordinate any logistics necessary to operate the power plant.
- Ensure accurate and detailed status of T&D switches, equipment and facilities are maintained in the EOC and updated as changes occur.
- Approve field switching orders and direct all field switching operations.
- Mostly operate in the EOC but may go out to the field as needed to personally view issues. When departing the EOC, the SOS should designate a knowledgeable staff member to be in charge of the EOC during his absence. It may be advantageous for the off-going SOS to tour outage sites immediately after shift and provide the SOS a report. Alternatively, it may be advantageous for the on-coming SOS to tour outage sites prior to shift.

2.4.3.3. Emergency Service Representative (ESR). BVES staff who are assigned to this task are the Customer Service Representatives and the Customer Service Specialist. The number of ESR staff assigned per shift shall be directed by the Emergency Manager. Other staff may be requested to augment the ESR Team or to augment certain functions of the ESR Team (for example, EOC staff may be used to call back customers as needed). Additionally, the ESR function or some portions of the ESR function may be transferred to BVES's contracted call center during non-business hours when call volume is low. ESR staff reports directly to the SOS. Activities associated with the ESR Team include, but are not limited to:

- Process incoming customer calls.
- Issue FA's as appropriate.
- Route FA's to EOC dispatch for action.
- Update the Outage Management System as applicable.
- Assist EOC Dispatch in organizing and prioritizing incoming FA's as directed by SOS.
- During extremely high volume periods, alternative procedures may be employed to route FA's more efficiently as directed by the Emergency Manager. For example, the ESRs may be requested to route a periodic CSV file from CC&B of new FA's to EOC Dispatch instead of individual FA's.
- May be assigned to provide first layer of sorting FA's by type (outage, line down, etc.) as directed by the SOS.

## **Bear Valley Electric Service, Inc. Emergency & Disaster Response Plan**

- Respond to customer inquiries on system status using latest information from EOC.
- Provide SOS information on customers with “Life Support” and Access and Functional Needs (AFN) customers affected by outages.
- Update IVR and two-way text messages as directed by the SOS.
- Update Customer Care and Billing (CC&B) with results of completed FA’s from EOC.
- Call customers to verify power restoration as directed by SOS.
- Normally ESR staff perform assigned duties in the Customer Service area. The Emergency Manager may direct ESR staff to work at another area.

2.4.3.4. System Monitor. Staff assigned to this position are directed by the Emergency Manager and are generally selected from the following staff: Energy Analyst, Regulatory Compliance Project Engineer, Wildfire Mitigation & Reliability Engineer, Utility Planner, GIS Specialist, Engineering Technician, Engineering Inspector, Substation Technician, Meter Technician, Field Inspector, Senior Account Analyst, Account Analyst, and Administrative Support Associate. Other staff as deemed qualified by the Emergency Manager may also be assigned. Normally, one System Monitor shall be assigned per shift but additional System Monitors may be assigned to certain shifts when activity is expected to be high. The System Monitor reports directly to the SOS. Activities associated with the System Monitor include, but are not limited to:

- Assist the SOS in maintaining the “common operational picture” in the EOC. Utilizes the Outage Management System (OMS), SCADA, CC&B, GIS applications, and other applications to manage information and data in support of restoration efforts.
- Work closely with Emergency Service Representatives to transfer information.
- Update the Situation Report.
- Assist in receiving, prioritizing, dispatching, and resolving all FA’s and T&D system problems reported by other means per BVES priorities identified in the EDRP.
- Take reports from the Line Crews, Damage Assessment Teams and other field assets and communicate this information to appropriate EOC staff.
- Document outages, incidents, and accidents.
- Maintain cost recovery records and documentation of work completed as requested by the Finance and Administration Group.
- Review weather forecast and other external information and provide this information to the SOS and Emergency Manager.
- Maintain status of the BVPP as needed.
- Assist SOS in maintaining an accurate and detailed status of T&D switches, equipment and facilities in the EOC.
- Assist the SOS in execution of responsibilities as directed.
- Perform assigned duties in the EOC.

2.4.3.5. Damage Assessment Team (DAT). Staff assigned to this team are as directed by the Emergency Manager and are generally selected from the following staff: Field Inspector, Substation Technician, Meter Technician, Field Serviceperson, Meter Readers, Wildfire Mitigation & Reliability Engineer, Utility Planner, GIS Specialist, Engineering Technician, Engineering Inspector, Buyer, Storekeeper, Regulatory Compliance Project Engineer, and Energy Analyst. Other staff as deemed qualified by the Emergency Manager may also be

## **Bear Valley Electric Service, Inc. Emergency & Disaster Response Plan**

assigned to this team. Normally, each DAT shall consist of two people. At least one DAT shall be assigned to each shift. Additional DATs may be assigned to certain shifts when activity is expected to be high. The DAT reports directly to the SOS. Activities associated with the DAT include, but are not limited to:

- Assist the SOS in execution of responsibilities as directed.
- Perform field investigations as directed by SOS.
- Keep the SOS informed of their position when out in the field.
- Provide detailed assessments and documentation including photographs and video of damage to SOS.
- Coordinate with and assist Line Crews as directed by SOS.
- Normally travel in pairs; especially during storm and other potentially hazardous conditions and at night. When conditions are favorable, the Emergency Manager may permit DAT field inspections to be performed by a single person.
- When not in the field, perform duties in the EOC as directed by the SOS.

2.4.3.6. Line Crews. Staff assigned to this crew are BVES Journeyman Lineman Crews (including Apprentice employees). Other BVES staff that are Journeyman Lineman (for example, Field Inspector) may be assigned as needed and directed by the Emergency Manager to augment BVES Line Crews. Emergency Manager may also assign Contracted Line Crews and Line Crews from other utilities through mutual aid agreements. The Emergency Manager shall direct the specific crew sizes, shift lengths and rotations, and functions (such as construction, service response, wire down and minor damage response, switching operations, patrols, damage assessments, etc.). The Line Crews report directly to the SOS. Activities associated with the Line Crews include, but are not limited to:

- Perform field activity work (such as construction, service response, wire down and minor damage response, switching operations, patrols, damage assessments, etc.) as directed by SOS.
- Keep SOS informed of work progress and developments in the field.
- Keep SOS informed of the status of T&D switches, equipment and facilities.
- Provide information (such as labor hours, equipment usage, and material consumption) to allow the collection of accurate cost recovery records and documentation for work completed.
- Assist in documenting outage and T&D system damage and restorations efforts.
- Consult with SOS on technical issues that may require Engineering & Planning evaluation and input.
- Request additional resources as needed.
- Operate Bear Valley Power Plant engines as directed.

2.4.3.7. Engineering Technical Support. The primary assigned are Engineering and Planning staff (Utility Engineer & Wildfire Mitigation Supervisor, Regulatory Compliance Project Engineer, Utility Planner(s), Wildfire Mitigation & Reliability Engineer, GIS Specialist, Engineering Technician, and Engineering Inspector) as designated by the Emergency Manager. This function may be augmented by mutual aid from other utilities and/or qualified contractors as the Emergency Manager deems necessary. Normally, Engineering Technical Support is an

## **Bear Valley Electric Service, Inc. Emergency & Disaster Response Plan**

“on-call” function as requested by the SOS. Engineering and Planning staff are generally “dual hatted” and perform other EDRP functions as assigned by the Emergency Manager. When there is a need for Engineering Technical Support, the System Monitor and SOS shall prioritize the specific workload for each Engineering and Planning staff (for example, Utility Planner may be pulled from the DAT to perform planning activities such as loading assessments on pole replacements and then return to DAT duties once the engineering work is completed).

2.4.3.8. *BVPP Operators*. Primary assigned are the BVPP Operators. BVES Journeyman Lineman may also be assigned as directed by the Emergency Manager. Additionally, the Emergency Manager may contract out for additional BVPP Operators, if needed. The Emergency Manager shall direct BVPP Operators and their shift schedule as necessary to support the anticipated or actual dispatching of the power plant. The BVPP Operators report directly to the SOS. Activities associated with the BVPP Operators include, but are not limited to:

- Operate the BVPP as directed by SOS.
- Maintain BVPP at the ready when not dispatched.
- Ensure backup systems fully operational.
- Ensure readiness to perform “Black Start” procedure.
- Request additional resources as needed.
- Document materials and labor hours expended.

2.4.3.9. *IT Operations Support*. Primary assigned is the Senior Technical Operations Support Specialist and the Technical Operations Support Specialist. GSWC IT resources may provide backup support for this function. IT Support shall report directly to the SOS. Activities associated with IT Support include, but are not limited to:

- Ensures utmost business continuity by monitoring and maintaining EOC, Operations & Planning, Customer Service, Accounting and Energy Resources communications and IT systems are operating properly.
- Provides support to ensure connectivity to critical applications.
- Coordinates communications and IT systems issues with GSWC IT.
- Resolves local IT and network connectivity issues with field equipment and systems (for example, SCADA).
- Coordinates communications and connectivity with other entities as directed.
- Assists with other duties as directed by the SOS.

### 2.4.4. Logistics Group.

2.4.4.1. The Accounting Supervisor is the primary BVES staff assigned in charge of the Logistics Group. Alternates that may be assigned include the Senior Accounting Analyst, Buyer or others as designated by the Incident Commander.

2.4.4.2. The Logistic Group shall normally be made up Accounting Supervisor, Senior Account Analyst, Buyer, Storekeeper, Accounting Analyst, Administrative Support Associate, and other staff as designated by the Incident Commander.

## **Bear Valley Electric Service, Inc. Emergency & Disaster Response Plan**

2.4.4.3. Logistics Group reports directly to the Incident Commander on all logistics issues and coordinates directly with the leaders of the Operations, Planning, Logistics and Finance & Administration Groups to provide optimal logistics support to ensure restoration activities are safe, efficient and effective. Activities associated with Logistics Group include, but are not limited to:

- Group leader attends BVES SEMS leadership meetings.
- Maintain at least one group member at the EOC. EOC presence may be modified to “on call” when logistics work is not significant (for example, during night shift) as approved by the Incident Commander.
- Work closely with Emergency Manager and SOS to forecast contracted services, equipment and material requirements for restoration activities.
- Invoke contracts for response services as requested by the Emergency Manager (for example, emergency line work, snow clearing, tree trimming and clearing, etc.).
- Process emergency contracts and procurement requests as needed to support emergency restoration activities.
- Ensure materials for recovery activities are available, issued to Line Crews as needed, and properly documented when utilized or consumed.
- Ensure vehicle fleet fueled, winterized and ready to support response activities.
- Ensure BVES facilities properly functioning to support EOC and response activities.
- Arrange meals as necessary for staff engaged in response activities.
- Arrange lodging and other mobilization logistics for mutual aid and contracted crews as requested by the Emergency Manager.
- Work collaboratively with other stakeholder organizations and the General Office as applicable on logistics issues.
- Perform other logistics activities as directed by the Incident Commander.
- Develop lists of lessons learned for after action evaluation and improvements to logistics.

### 2.4.5. Planning Group.

2.4.5.1. The Energy Resources Manager is the primary BVES staff assigned in charge of the Planning Group. Alternates that may be assigned include the Utility Manager, Regulatory Affairs Manager, or others as designated by the Incident Commander.

2.4.5.2. The Planning Group shall normally be made up of the Regulatory Affairs Manager, Utility Manager, Customer Care and Operations Support Supervisor, Accounting Supervisor, Energy Supply Specialist, Energy Analyst, and other staff as designated by the Incident Commander.

2.4.5.3. The Planning Group reports directly to the Incident Commander on all planning issues and coordinates directly with the leaders of the Operations, Logistics and Finance & Administration Groups to provide optimal planning support to ensure restoration activities are safe, efficient and effective. Activities associated with Planning Group include, but are not limited to:

- Group leader attends BVES SEMS leadership meetings.

## **Bear Valley Electric Service, Inc. Emergency & Disaster Response Plan**

- Maintain at least one group member at the EOC. EOC presence may be modified to “on call” when planning work is not significant (for example, during night shift) as approved by the Incident Commander.
- Work closely with Emergency Manager to develop a high level restoration strategy.
- Evaluate the adequacy of response and recommend adjustments as needed.
- Evaluate weather forecasts and other event information to develop contingencies.
- Determine if Catastrophic Emergency Memorandum Account (CEMA) request is appropriate and coordinate with local government officials and Regulatory Affairs on emergency declarations.
- Develop load forecasts and plan sources of energy supply to best meet load demand.
- Work collaboratively with other stakeholder organizations and the General Office as applicable on planning issues.
- Perform other planning activities as directed by the Incident Commander.
- Develop lists of lessons learned for after action evaluation and improvements to plans.

### 2.4.6. Finance & Administration Group.

2.4.6.1. The Accounting Supervisor is the primary BVES staff assigned in charge of the Finance and Administration Group. Alternate staff may be assigned include the Energy Resource Manager, Senior Account Analyst, or others as designated by the Incident Commander.

2.4.6.2. The Finance & Administration Group shall normally be made up of the Senior Account Analyst, Account Analyst, Administrative Support Associate, and other staff as designated by the Incident Commander.

2.4.6.3. The Finance & Administration Group reports directly to the Incident Commander on all finance and administration issues and coordinates directly with the leaders of the Operations, Logistics and Planning Groups to provide optimal Finance & Administration support to ensure that restoration activities are safe, efficient and effective. Activities associated with Finance & Administration Group include, but are not limited to:

- Group leader attends BVES SEMS leadership meetings.
- Maintain at least one group member at the EOC. EOC presence may be modified to “on call” when planning work is not significant (for example, during night shift) as approved by the Incident Commander.
- Work closely with Operations & Logistics Groups to track expenses (labor, invoices for services, materials consumed, etc.).
- Ensure clear guidance provided to groups to ensure expenses properly tracked.
- Treat each event as possible Catastrophic Event, which costs could be authorized for recovery.
- Execute CUEA administrative requirements as needed.
- Work collaboratively with other stakeholder organizations and the General Office as applicable on finance and administration issues.
- Perform other finance and administrative activities as directed by the Incident Commander.

## **Bear Valley Electric Service, Inc. Emergency & Disaster Response Plan**

- Develop lists of lessons learned for after action evaluation and improvements to finance and administration.

2.5. **Plan Changes.** BVES Incident Commander has the authority to modify this plan including the organizational structure as needed to optimally respond to the specific emergency at hand. Specifically, the Incident Commander, must evaluate each emergency situation and determine:

- To what extent should the BVES Emergency Organization be staffed.
- To what extent should the EOC be activated.
- Should additional resources (for example, mutual aid and/or contracted services) be mobilized.



# Bear Valley Electric Service, Inc. Emergency & Disaster Response Plan

## 3. Emergency Response Event Preparations.

3.1. **Preparations.** Emergency Response preparations are a long-term process for which each BVES Department must be constantly ready, especially during the winter months. Preparations for emergency response are best achieved through training on the EDRP, continuous evaluation of the plan, coordination and outreach with external stakeholders, provisioning emergency response materials and equipment, and establishing mechanisms to rapidly bring emergency response resources to the service area such as mutual aid agreements, contracts, and other partnering agreements.

3.2. **Emergency Response Preparations Checklist.** Appendix B, Emergency Response Preparations Checklist, is designed to assist Managers and Supervisors in short-term emergency response preparations.

3.2.1. The President shall direct the execution of the Emergency Response Preparations Checklist based on available forecasting information. In general, it is easier to stand down from a forecasted storm event that does not materialize than to ramp up in the middle of a major storm event. Therefore, erring on the side of being ready is always the better choice. The President may direct the suspension of the Emergency Response Preparations Checklist if the forecast changes and it is no longer warranted.

3.2.2. The checklist is ideally triggered at the 96-hour point prior to a potential emergency response event such as a major forecasted winter storm. However, staff must be flexible and understand not all emergency response events will be accurately forecasted; hence, the implementation time of this checklist may be significantly less than 96-hours. In the event that major outages occur without warning, it is still useful to go through the Emergency Response Preparations Checklist and complete the preparatory checklist items as applicable.

3.2.3. The checklist is designed to be all-inclusive of plausible emergency response to storm events for the BVES service area such as winter snow storms. Therefore, certain preparatory items may not be applicable for all emergency response events; for example, vehicle snow chains may not be required during a loss of import power supply lines from Southern California Edison (SCE). The Utility Manager may direct that certain items on the checklist need not be executed as applicable. Additionally, the Utility Manager may direct new preparatory items be added to the checklist depending on specific impending conditions. The Utility Manager shall use this checklist as applicable when extreme fire threat weather that could result in PSPS conditions is forecasted. The Utility Manager shall keep the President informed of any changes to the checklist.

3.2.4. During after action reviews for emergency response events as well as the annual Emergency Preparedness and Response Plan drill, the Emergency Response Preparations Checklist should be reviewed for adequacy and updated as applicable.

3.3. **Contingency Operating Procedures.** The Field Operations Supervisor shall develop pre-approved switching orders and operating procedures that would most likely to be used in the more plausible loss of supply and outage scenarios. The Field Operations Linemen, the

## **Bear Valley Electric Service, Inc. Emergency & Disaster Response Plan**

Power Plant Operators, and other applicable BVES Staff should train on these procedures as applicable so that in the event they are needed, the procedures are readily available, approved, and understood by staff. Switching orders and operating procedures should include at a minimum the following:

- BVPP Black Start System Line-up Switching Order.
- BVPP Black Start Engine Startup Procedures (with and without back-up BVPP generator).
- Switching Order to express the Radford SCE Source to Meadow Substation.
- Rolling blackout procedure when only Radford SCE Source and BVPP are available (13.4 MW Capacity Limit).
- Rolling blackout procedure when only BVPP is available (8.4 MW Capacity Limit).
- Load shedding procedures and priorities.
- Proactive de-energization of high risk circuits in the event of extreme fire threat weather.

**3.4. Mobile Emergency Generation.** The Utility Manager shall ensure that there is a contingency plan to connect mobile emergency generators to the BVES system to provide emergency power. The contingency plan should at a minimum include the following:

- Source at least 5 MWs of mobile emergency generation (may be multiple generators) that may be brought to the BVES service area within 24 hours of being requested. If possible, at least two vendor sources should be identified.
- Identify the fuel requirements and replenishment source(s) for the proposed mobile emergency generation.
- Identify the locations in the BVES system where the mobile emergency generators would be located and connected to the BVES system.
- Identify the connection type and ensure that this is compatible with the sourced mobile emergency generators and the BVES system.
- Identify if any networking is required by the supplier for the mobile emergency generators to operate and, if so, how this shall be accomplished.
- Identify any protection needed and ensure that it is available between the source mobile emergency generators and the BVES system connection points.
- Identify the operating control requirements for the sourced mobile emergency generators (for example, monitoring requirements, startup and shutdown procedures, voltage and load regulation, phase synchronization, operating checks and maintenance, operator labor requirements, etc.) and address how these shall be accomplished (for example, supplier shall operate the mobile emergency generators, etc.).

**3.5. Material and Equipment.** Obtaining material and equipment is always a challenge given that the BVES service area is remotely located and at approximately 7,000 feet in mountainous terrain with only three points of access. The roads present a significant challenge to large trucks under most conditions and all vehicles in wintery ice and snow conditions. Therefore, it is essential to the success of BVES' emergency response plan that certain minimum levels of materials and equipment be always readily available in the BVES service area.

## **Bear Valley Electric Service, Inc. Emergency & Disaster Response Plan**

3.5.1. The Utility Manager shall provide the Accounting Supervisor a minimum quantity of T&D equipment and materials to maintain at BVES to allow timely repairs to likely T&D system failures (overhead facilities, underground facilities, and substation equipment). Additionally, the Utility Manager should identify other vital spares to sustain BVPP operations.

3.5.2. The Field Operations Supervisor shall provide the Accounting Supervisor the minimum quantities of materials and supplies necessary to safely operate field crews involved in restoration repairs. These supplies should include items such as traffic control markers and signs, caution cones, portable site lighting, caution lighting, yellow CAUTION tape and red DANGER tape, portable safety barriers, personal protective equipment (PPE), winter and foul weather gear, etc.

3.5.3. All Managers and Supervisors shall ensure that their staff that would be assigned to operate in the field have available to them the appropriate PPE, adequate weather protection (cold weather gear, rain gear, sunscreen and head gear, etc.), and equipment to perform their duties as assigned by the EDRP.

3.5.4. The Buyer and Storekeeper under the supervision of the Accounting Supervisor shall ensure the equipment and materials identified above are stocked to the minimum quantities. Additionally, they shall ensure the identified equipment and materials are readily sourced and may be ordered and delivered in short timeframe.

3.6. **Vehicles.** All Managers and Supervisors are responsible for ensuring that the vehicles and trucks assigned to them and their employees are ready to operate safely and as needed during restoration activities under the anticipated weather and terrain challenges of the BVES services area.

3.6.1. The Accounting Supervisor shall develop a minimum list of equipment for all BVES vehicles to operate safely in the anticipated weather and terrain conditions including snow and ice that are reasonably encountered in the BVES service area (for example, snow tires, snow chains, shovel, first aid kit, light, fire extinguisher, etc.).

3.6.2. The Field Operations Supervisor shall develop a list of any additional equipment necessary for all utility trucks (digger and bucket trucks), work trucks (foreman and Dutyman trucks) and other vehicles used by Field Operations employees to operate safely and as needed in the anticipated weather and terrain conditions that are reasonably encountered in the BVES service area.

3.6.3. The Storekeeper under the direction of the Accounting Supervisor shall coordinate with the applicable Managers and Supervisors to ensure all vehicles and trucks are fully equipped, properly serviced, and ready to safely operate as needed in the anticipated weather and terrain conditions that are reasonably encountered in the BVES service area.

3.6.4. If a vehicle is not properly equipped, in good working order, and/or safe to operate for the current or anticipated conditions, it should be identified as such by the applicable Manager or Supervisor that is responsible for the vehicle or truck and restricted in use (for example, if a vehicle is not equipped with snow tires and chains, it should not be used in snow conditions).

## Bear Valley Electric Service, Inc. Emergency & Disaster Response Plan

3.7. **Contracts for Services.** During emergency restoration response activities, outside contracted services may be required to ensure efficient and effective restoration of electric service. However, it is extremely difficult to source and contract out services on short notice during an emergency. Therefore, Managers and Supervisors should identify the critical contracted services that may be reasonably expected to be needed for restoration activities, source providers of these services, and establish emergency contract agreements in accordance with the BVES's procurement policy.

3.7.1. **Table 3-1** lists the contracted services that should have pre-arranged emergency contract agreements in place.

**Table 3-1: List of Minimum Contingency Contracted Services**

Contracted Service	Responsibility	Additional Emergency Requirement
T&D overhead and underground high voltage utility power line construction.	Utility Manager	<ul style="list-style-type: none"> <li>• Must have 24/7 contact.</li> <li>• Onsite within 8 hours.</li> </ul>
T&D substation and major electrical equipment troubleshooting, repair and replacement services.	Utility Manager	<ul style="list-style-type: none"> <li>• Must have 24/7 contact.</li> <li>• Onsite within 24 hours.</li> </ul>
T&D work package design and development services.	Utility Engineer & Wildfire Mitigation Supervisor	<ul style="list-style-type: none"> <li>• Onsite within 48 hours.</li> </ul>
Civil construction for utility underground infrastructure repair and construction, road and sidewalk repair and construction, retaining wall repair and construction, backhoe services, hauling and other civil construction services.	Field Operations Supervisor	<ul style="list-style-type: none"> <li>• Must have 24/7 contact.</li> <li>• Onsite within 8 hours.</li> </ul>
Crane and lifting Services.	Field Operations Supervisor	<ul style="list-style-type: none"> <li>• Must have 24/7 contact.</li> <li>• Onsite within 8 hours.</li> </ul>
Vegetation clearance from high voltage overhead power lines and tree removal.	Field Operations Supervisor	<ul style="list-style-type: none"> <li>• Must have 24/7 contact.</li> <li>• Onsite within 8 hours.</li> </ul>
Airborne inspection, heavy lift and construction services	Utility Manager	<ul style="list-style-type: none"> <li>• Must have 24/7 contact.</li> </ul>
Environmental cleanup and mitigation to oil and hazmat spills.	Accounting Supervisor	<ul style="list-style-type: none"> <li>• Must have 24/7 contact.</li> <li>• Onsite within 8 hours.</li> </ul>
Welding and metal fabrication services.	Field Operations Supervisor	<ul style="list-style-type: none"> <li>• Must have 24/7 contact.</li> <li>• Onsite within 8 hours.</li> </ul>
Snow removal for BVES Main Facility and Stockyard, substations and other areas as directed.	Field Operations Supervisor	<ul style="list-style-type: none"> <li>• Must have 24/7 contact.</li> <li>• Onsite within 4 hours.</li> </ul>
Troubleshooting, repair and replacement parts for emergency generators (Main Office and BVPP).	Field Operations Supervisor	<ul style="list-style-type: none"> <li>• Must have 24/7 contact.</li> <li>• Onsite within 12 hours.</li> </ul>
Mechanical and electrical troubleshooting, repair services and replacement parts for BVPP equipment and support systems (Waukesha Model VHP7104GSI engine/generator sets).	Field Operations Supervisor	<ul style="list-style-type: none"> <li>• Must have 24/7 contact.</li> <li>• Onsite within 12 hours.</li> </ul>
Utility Truck troubleshooting, repair and support services	Field Operations Supervisor	
Vehicle troubleshooting, repair and support services	Storekeeper	
Diagnostic and technical support services for SCADA and associated network systems.	Senior Technical Operations Support Specialist	

## Bear Valley Electric Service, Inc. Emergency & Disaster Response Plan

Contracted Service	Responsibility	Additional Emergency Requirement
Diagnostic and technical support services for Outage Management System (OMS) and related applications.	Senior Technical Operations Support Specialist	
Diagnostic and technical support services for Interactive Voice Recording (IVR) and related applications.	Customer Service Supervisor	
Diagnostic and technical support services for BVES's phone system.	Senior Technical Operations Support Specialist	
Diagnostic and technical support services for BVES's internal and external network and connectivity systems.	Senior Technical Operations Support Specialist	
Diagnostic and technical support services for BVES's External Website.	Customer Program Specialist	
Public relations (PR) services	Customer Program Specialist	<ul style="list-style-type: none"> <li>• Must have 24/7 contact.</li> <li>• Provide remote PR response within 2 hours</li> </ul>
Media advertising services	Customer Program Specialist	

3.7.2. Many of the services listed in Table 3-1 are used in the normal course of BVES operations through already established contracts. Where this is the case, it is advantageous to include any additional emergency response requirements rather than sourcing to different suppliers.

3.7.3. The Administrative Support Associate in coordination with the Utility Manager and Accounting Supervisor shall develop a list of Contingency Contracted Services and file the list in Appendix C, Contingency Contracted Services. The list shall be in tabular format and at a minimum include the following information:

- Contractor Entity Name
- Services Provided with brief description of any specific emergency requirements
- Point of Contact
- Contact phone numbers including afterhours numbers
- Main Office location

The list shall be reviewed and updated by the Administrative Support Associate each quarter.

3.7.4. Where onsite mobilization is required to perform the requested services, Managers and Supervisors should carefully consider the feasibility for the contractor to reach the BVES service area in a timely manner given the remote and mountainous terrain.

3.7.5. When advanced warning or forecasting is available, the Utility Manager may direct pre-positioning of equipment and materials to improve the ability of the contractor to mobilize. For example, a contractor for T&D overhead and underground high voltage utility power line construction may be requested to pre-position trucks at BVES ahead of a snow storm.

3.7.6. When advanced warning or forecasting is available, it is generally useful for Managers and Supervisors alert their points of contact for contracted services that there may be an impending requirement for their services.

## **Bear Valley Electric Service, Inc. Emergency & Disaster Response Plan**

3.8. **Mutual Aid.** Mutual Aid agreements are an efficient and effective resource multiplier available to BVES restoration efforts. Therefore, it is extremely important that these agreements be maintained current and that staff understand what resources they may provide and how to request the resources.

3.8.1. California Utilities Emergency Association. The California Utilities Emergency Association (CUEA) Mutual Aid Agreement allows member utilities to request and obtain labor, materials, and/or equipment resources from other member utilities in a rapid manner on a reimbursable basis. BVES shall be an active member of CUEA and shall participate in the Energy Committee meetings and activities as feasible. Generally, CUEA meetings and activities provide information on emergency response planning at other utilities and state agencies. Additionally, CUEA is an excellent forum for organizations to discuss best practices. The Utility Manager shall be responsible for managing CUEA mutual aid agreement and shall ensure processes are in place and applicable Operations Staff are trained to:

- Inquire about CUEA resources and make formal mutual aid requests in accordance with the CUEA agreement.
- Provide mobilization support such as lodging and meals to responding mutual aid crews and other labor resources provided through CUEA.
- Direct and manage mutual aid crews and other labor resources provided through CUEA.
- Provide logistics support (materials, equipment and other resources as needed) to mutual aid crews and other labor resources provided through CUEA.

The Administrative Support Associate shall ensure CUEA documents are available to the Operations Group and in the EOC.

The Accounting Supervisor shall ensure processes are in place to account for and pay for CUEA mutual aid resources that respond to BVES' aid requests. This shall require close coordination with the Operations Group.

3.8.2. Mountain Mutual Aid Association. The mission of the Big Bear Valley Mountain Mutual Aid Association ("MMAA") is to coordinate and facilitate resources to minimize the impact of disasters and emergencies on people, property, the environment, and the economy. This is accomplished by detailed valley-wide evacuation planning and dedicated support to all involved emergency responders and their agencies. MMAA's vision is to prepare Big Bear Valley citizens, tourists, businesses, and governments to maximize their resistance to disaster through preparedness, mitigation, response, and recovery activities. BVES shall be an active member of MMAA and shall actively participate in the MMAA meetings and activities. This is especially important in establishing strong personal business relationships with key players and stakeholders in the community such that during an emergency event, the BVES Team is working with stakeholders it is already familiar with. **Table 3-2** provides a listing of the MMAA current membership. The Utility Manager shall be responsible for managing MMAA mutual aid agreement and shall ensure processes are in place and applicable Operations Staff are trained to:

- Coordinate activities with MMAA.
- Request support and resources of MMAA members.

## Bear Valley Electric Service, Inc. Emergency & Disaster Response Plan

MMAA has the ability to provide a wide range of direct support to BVES restoration activities during emergency response including traffic controls, road-clearing services, coordination with local government agencies, other utilities, and other nongovernmental organizations, and communications with the public. Additionally, one of the most significant strengths of MMAA is its ability to coordinate through its member organizations support and relief for customers experiencing extended sustained major power outages. This may include health and welfare checks, shelters, meals, cooling centers, restroom and shower stations, etc.

**Table 3-2: Bear Valley Mountain Mutual Aid Association Membership**

Organization		
<ul style="list-style-type: none"> <li>• City of Big Bear Lake</li> <li>• Big Bear Fire Department</li> <li>• San Bernardino County Fire</li> <li>• San Bernardino County Department of Public Health</li> <li>• San Bernardino County Office of Emergency Services (OES)</li> <li>• San Bernardino County Sheriff's Department</li> <li>• San Bernardino County Transportation Authority</li> <li>• San Bernardino County Emergency Communications Service (ECS)</li> <li>• U.S. Forest Service</li> <li>• California Highway Patrol</li> <li>• California Department of Transportation</li> </ul>	<ul style="list-style-type: none"> <li>• Big Bear Airport</li> <li>• Big Bear City Community Services District</li> <li>• Big Bear Lake Department of Water &amp; Power</li> <li>• Big Bear Lake Municipal Water District</li> <li>• Big Bear Area Regional Water Authority</li> <li>• Bear Valley Electric Service, Inc.</li> <li>• Southwest Gas</li> <li>• Bear Valley Community Healthcare District</li> <li>• Bear Valley Unified School District</li> <li>• Mountain Area Regional Transit Authority</li> </ul>	<ul style="list-style-type: none"> <li>• Bear Mountain Ski Resorts</li> <li>• Big Bear Chamber of Commerce</li> <li>• Big Bear Lake Resort Association</li> <li>• Big Bear Valley Recreation &amp; Park District</li> <li>• American Red Cross</li> <li>• Big Bear Community Emergency Response Team (CERT)</li> <li>• Big Bear Valley Community Organizations Active in Disaster (COAD)</li> <li>• Big Bear Valley Voluntary Organizations Active in Disaster (VOAD)</li> <li>• Civil Air Patrol</li> <li>• Salvation Army</li> </ul>

**3.9. Communications Layers and Message Deck.** Communications with stakeholders and customers during emergency response is one of BVES' top three priorities. The Customer Service Supervisor with the support of the Customer Program Specialist shall ensure the following:

- Multiple layers of communications are established to reach customers. These should include agreements with local media (newspaper, internet news, radio stations, etc.), BVES Website, BVES social media, Interactive Voice Response (IVR) System, email blast, etc.
- Training applicable staff and testing all of the established communications layers.
- Leveraging the communications platforms available to other stakeholder organizations. For example, the Big Bear Chamber of Commerce has an email blast channel to its member businesses and the City of Big Bear Lake has an email blast channel to many of its residents.
- Developing pre-approved message templates that properly guide staff preparing communications to customers and stakeholders with the necessary information to provide a useful update. For example, pre-staged press releases, website messages, social media messages, IVR messages, etc. on sustained outages may be prepared well in advance of any emergency with "fill-in-the-blanks" for the specific event.

## **Bear Valley Electric Service, Inc. Emergency & Disaster Response Plan**

3.10. **Staff Roster and Recall List.** A critical component of successfully implementing the EDRP is the ability to rapidly recall staff as need. Therefore, it is critical that contact information for each staff be maintained up to date and be made available to staff that would execute the recall.

3.10.1. The Administrative Support Associate is responsible for maintaining and updating the BVES Staff Roster and Recall List. This list shall be filed in Appendix D, BVES Staff Roster and Recall List, to the EDRP. This list shall be reviewed for accuracy each quarter by the Administrative Support Associate and updated as needed.

3.10.2. When new staff join or staff terminate their employment at BVES, the Administrative Support Associate shall update BVES Staff Roster and Recall List.

3.10.3. Additionally, when staff change their contact information, it is essential that they inform their Supervisor and the Administrative Support Associate so that the recall roster may be updated.

3.10.4. The recall roster should include at a minimum employee name, home phone, mobile phone, personal email, and address. It is critically important that the roster have a phone number where the employee may be contacted at any time. The address is important because in a major storm it may be safer and more efficient to send a BVES vehicle to pick up staff to respond to the EDRP and staff up the EOC. Personal email is important because an initial group email blast may be sent to set in motion mobilization of the EOC, while calling each staff member is pursued.

3.10.5. The Administrative Support Associate shall develop and update as necessary a group email address for staff using both their personal and work email addresses for recall purposes.

3.11. **Key External Contacts List.** BVES' ability to contact external stakeholders and resource providers is critical to successfully executing EDRP restoration activities.

3.11.1. The Administrative Support Associate in coordination with Managers and Supervisors shall develop the Key External Contacts List and file the list in Appendix E, Key External Contacts List. The list shall be in tabular format and at a minimum include the following information:

- Key External Contact Entity Name
- Point of Contact
- Contact phone numbers including afterhours numbers
- Email
- Main Office location
- Category of Key External Contact per Table 3-3

The list shall be reviewed and updated by the Administrative Support Associate each quarter.



## Bear Valley Electric Service, Inc. Emergency & Disaster Response Plan

3.11.2. Managers and Supervisors should provide the Administrative Support Associate updates to the Key External Contacts List as changes occur.

3.11.3. Table 3-3 provides the minimum key external contact categories that should be included in the Key External Contacts List.

**Table 3-3: Key External Contacts**

Category
• State government, agencies and departments
• Local government, agencies and departments
• Critical Customers
• Public Safety Partners
• Utilities
• Non-governmental organizations (business and community organizations; volunteer relief and aid groups; other disaster relief entities)
• Media groups

3.12. **Emergency Operations Center and BVES Main Facility.** Readiness of the EOC and BVES Main Facility to support EDRP restoration activities on short notice is an essential element to successfully executing the EDRP.

3.12.1. The Utility Manager is responsible for ensuring readiness of the EOC as detailed in Section 2.3. Appendix A, EOC Preparedness Checklist, provides a list of equipment, capabilities, materials and supplies that should be available to the primary EOC. The Operations Group should be familiar with this checklist and be trained on setting up the EOC.

3.12.2. Each Manager and Supervisor is responsible for ensuring that facilities and resources under their responsibility are ready to support the EDRP restoration activities.

3.12.3. The Accounting Supervisor is responsible for ensuring the BVES Main Facility is ready to support sustained EOC and EDRP operations to include stocking consumables for EOC and restoration activities, providing staff on-site meals, water and other necessary habitability amenities.

# Bear Valley Electric Service, Inc. Emergency & Disaster Response Plan

## 4. Emergency Response Procedures.

4.1. **Emergency Response Plan Implementation and Emergency Operations Center Activation.** BVES responds to emergencies and outages based on the resource requirements to properly resolve the situation in a safe, timely, efficient and effective manner. When the restoration efforts are beyond the capabilities of the normally assigned Field Operations staff and normal Customer Service resources, the EDRP should be implemented.

4.1.1. Response Levels. There are three basic outage response levels that BVES uses. Level 1 and 2 pertain to the EDRP and Level 3 refers the normal BVES working hours and afterhours Field Operations and Customer Service outage response procedures and processes. When the EDRP is activated, Level 1 or 2 are used to describe level of EOC activation and restoration response process. Level 3 is the normal Service Crew (or Dutyman for afterhours) response process to outages and system problems during the course of normal T&D operations. The response levels to outages and emergencies are summarized in Table 4-1.

**Table 4-1: BVES Outage and Emergency Response Levels**

Response	Event Type	Action	Comments
Level 1	High Risk Long-term*	EOC fully activated EDRP processes implemented	It is preferred to fully activate EOC and then shift to Level 2 activation, if full response determined to not be necessary.
Level 2	Moderate Risk Short-term	EOC partially activated EDRP processes implemented	Level of EOC activation and EDRP implementation as directed by Utility Manager.
Level 3	Low Risk Short-term	Normal Service Crew/Dutyman and Customer Service processes	These events are normally within the capability of assigned Service Crew or Dutyman to resolve with the normal on call resources.

\*Long-term is generally defined as 12 hours.

4.1.2. Plan Activation. The President shall direct activation of the EDRP and, therefore, the EOC and shall also direct the applicable response Level. The President should consider the following in evaluating whether or not to implement the EDRP and, if the EDRP is to be implemented, to what Level (1 or 2) to activate the EOC:

- Will resources beyond BVES' normal outage response posture be required and to what extent? Will external resources (mutual aid and/or contracted services be required)?
- Will the restoration efforts be long-term (generally 12 hours or greater)? If long-term, how long?
- Will the restoration efforts be more efficient if the BVES staff is organized for around the clock customer service and field operations?
- Will the restoration efforts require increased management and logistics support beyond that of the Field Operations Supervisor?
- Is the outage (or high potential for outage) expected to have significant impact on BVES customers and/or stakeholders?

## **Bear Valley Electric Service, Inc. Emergency & Disaster Response Plan**

- Will rapid and close coordination be required with other government and agencies directing response actions to an emergency (for example, Incident Commander for a wildfire in or adjacent the BVES service area)?
- Will communications efforts require increased and dedicated resources beyond the normal Customer Service communications posture?

4.1.2.1. In considering the above factors, the President shall drive to ensure that the BVES response is at the appropriate level to achieve a safe, timely, and prudent allocation of resources in the best interest of customers and other stakeholders.

4.1.2.2. The EDRP will be directed in response to an extended outage as a result of proactive de-energization (public safety power shutdown) to shut off power in high risk areas when extreme fire conditions present a clear and imminent danger to public safety. The focus of implementing the EDRP in this circumstance would be to improve coordination with local government and agencies and provide affected customers relief resources generally through mutual aid (MMAA) as needed. Specific public safety power shutdown procedures are provided separately in the BVES Public Safety Power Shutdown Plan.

4.1.2.3. The President shall direct activation of the EOC in situations where an outage has not yet occurred but the likelihood is significant. An example of a high risk situation is a wildfire that has not yet resulted in outages but has the potential to do so and/or may require rapid and close coordination with the Fire Incident Commander.

4.1.2.4. It is generally preferred to fully activate EOC and then shift to Level 2 activation as conditions warrant. By bringing in the full EOC organization, the staff can be briefed on the situation and then stood down with specific instructions tailored to the Level 2 response requirements.

4.1.2.5. When the EOC is directed to be activated, the President shall designate staff to utilize Appendix D, BVES Staff Roster and Recall List, to alert employees to staff the EOC. Additionally, a group email should be sent out to staff using their work and personal email address.

4.1.2.6. When the EDRP is implemented for training, such as for the annual drill, the Utility Manager shall put controls in place to prevent drill activities from interfering and/or confusing staff, customers, and stakeholders with real-world BVES operations.

4.2. **Essential Elements of Information (EEI).** EEIs are key information that the Incident Commander and EOC Group Leaders need in order to make timely and informed decisions on emergency response. The EEIs listed in Table 4-2, Essential Elements of Information, are critical to the BVES Emergency Leadership Team's ability to assess the emergency situation and decision making in emergency response. Therefore, obtaining this information and continually updating it must be a priority for all staff assigned to the emergency response efforts.

### **Table 4-2: Essential Elements of Information**

## Bear Valley Electric Service, Inc. Emergency & Disaster Response Plan

EEI	Remarks
<p>Potential hazards that impact the safety and health of BVES employees, contracted and mutual assistance personnel, first responders, and the public</p>	<p><b>Safety is our top priority.</b> Therefore, it is vitally important to identify potential hazards so that resources may be properly allocated to assessing, mitigating and eliminating the hazards.</p>
<p>Updated common operating picture based on indications and sensors, forecasts, and the accumulation of information from the field</p>	<p>Maintaining a common operating picture is a primary function of the EOC staff so that each Group is able to provide a coordinated and collaborative uniform response to the emergency. Additionally, the common operating picture leads to consistent messaging with customers and stakeholders based on the best available information.</p>
<p>Facility and equipment assessments and operational impacts to BVES' business operations</p> <ul style="list-style-type: none"> <li>• Status of Power Delivery Systems <ul style="list-style-type: none"> <li>○ 34.5 kV sub-transmission system</li> <li>○ Substations</li> <li>○ Distribution system</li> </ul> </li> <li>• Status of Power Supply (<b>Cause of supply disruptions and estimated time of restoration</b>) <ul style="list-style-type: none"> <li>○ SCE Supplies from Goldhill</li> <li>○ SCE Supply from Redlands</li> <li>○ Bear Valley Power Plant</li> </ul> </li> <li>• Status of Communications <ul style="list-style-type: none"> <li>○ Internet connectivity</li> <li>○ SCADA network</li> <li>○ BVES work radios</li> <li>○ Land line phones</li> <li>○ Cell phones</li> <li>○ Internal network connectivity</li> <li>○ Weather station network</li> <li>○ BVES Website</li> <li>○ BVES Social Media</li> </ul> </li> <li>• Status of IT Applications <ul style="list-style-type: none"> <li>○ CC&amp;B</li> <li>○ IVR/two-way text</li> <li>○ OMS</li> <li>○ GIS applications</li> <li>○ SCADA</li> </ul> </li> <li>• Status of facilities, equipment, and materials <ul style="list-style-type: none"> <li>○ Emergency Operations Center</li> <li>○ BVES Main Office</li> <li>○ BVES Yard</li> <li>○ Work trucks and vehicles</li> <li>○ Poles, wire, transformers and other material</li> </ul> </li> </ul>	<p>Identifying causes of power delivery system (T&amp;D) outages and supply disruptions is essential to determining the proper restoration actions to be taken.</p> <p>Maintaining accurate status as conditions in the field change and restoration activities progress throughout the emergency response is key to ensuring restoration resources are properly allocated and optimized at all times.</p> <p>Developing <b>estimated time of restoration (ETR)</b> is critical information that our customers and stakeholders need in order for them plan their responses and mitigations to the outage. ETRs must be updated as they change.</p> <p>Communications are often the weak link in emergency response. During an emergency some communications may be degraded and alternate systems may be necessary. Therefore, understanding the status of communication systems is critical to ensuring connectivity with field crews, damage assessment teams customers, and stakeholders.</p> <p>Many utility activities rely upon IT systems for rapid and efficient response. These systems are also susceptible to degradation during an emergency and workarounds may be necessary. Therefore, identifying IT problems and/or limitations is vital to directing effective restoration activities.</p> <p>As a result of the emergency or for other reasons, facilities and equipment may be degraded and material availability may be limited. Therefore, knowing the status of facilities, equipment, and materials is essential to developing restoration actions.</p>
<p>Status of contracted and mutual aid assistance requests</p>	<p>Outside line crew assistance, tree trimming services, crane support, snow removal services, civil construction services, and other outside assistance is often critical to successfully executing restoration activities. Therefore, is critical to fully understand:</p> <ul style="list-style-type: none"> <li>• Which entity (or entities) are providing resources?</li> <li>• What specific resources they are providing (equipment and personnel)?</li> </ul>

## Bear Valley Electric Service, Inc. Emergency & Disaster Response Plan

EEI	Remarks
	<ul style="list-style-type: none"> <li>• How and when will they arrive at BVES's service area?</li> <li>• What logistic support will they require?</li> </ul>
Limitations on access and transportation due to flooding, roadway damage, debris, or other closures	Access to BVES's service area under normal circumstances is limited. During an emergency, it is plausible that some or all of the access may be interrupted, which will significantly impact the ability to bring resources to BVES. Additionally, access to certain areas within the service area may be severely impaired due to the emergency. Therefore, it is critical that the EOC Team fully understand access limitations and have backup plans in place.
Interdependencies between BVES, government agencies, other utilities (water, gas, and electric), and critical infrastructure	Outages may have significant impact on government agencies, other utilities (water, gas, and electric), and critical infrastructure; especially, when their backup systems fail. Therefore, the EOC Team must be fully aware of how outages are impacting the area and coordinate a prioritized restoration plan that fully considers the above.
BVES staff supporting other agencies (for example, Incident Commander representative)	Imbedding a BVES representative with the on scene Incident Commander and/or local government EOCs (City or County) has proven to be highly effective in coordinating emergency response actions. The EOC Team must communicate frequently with the imbedded BVES representative to ensure coordinated and uniform emergency response.

4.3. **Restoration Strategy.** Outage events and emergencies are rarely similar in all respects; therefore, this general restoration strategy is constructed to provide the EOC Team with a scalable and flexible restoration strategies that can be employed as required to deal with the unique aspects of each major outage and emergency event.

4.3.1. Restoration Strategy Assumptions. Restoration strategies and guidance in the EDRP assume that the BVES system is in its **normal winter line-up** as follows:

- Bear Valley Power Plant (BVPP) is available for normal full power operations (8.4 MW).
- Goldhill SCE sub-transmission power lines and facilities from Cottonwood (Doble, Cushenberry, Goldhill Switch Station, and Ute 1 & 2) are fully operational and connected to the BVES system at the Shay and Baldwin Auto-Re-closers (34 MW).
- Radford SCE sub-transmission power lines and facilities from Zanja are fully operational and connected to the BVES system at the Radford Auto-Re-closer (5 MW).
- BVES T&D systems are in the normal system line-up.

Therefore, staff must ensure that when implementing guidance provided in the EDRP that they fully understand the current line-up of the BVES system and, if there are deviations to the normal winter line-up, they must properly account for these deviations in their restoration actions. It should be noted that under normal conditions, the Field Operations Supervisor

## **Bear Valley Electric Service, Inc. Emergency & Disaster Response Plan**

controls the system line-up and during EOC activation the system line-up is controlled by the SOS.

4.3.2. Restoration Priorities. The Utility Manager shall direct the specific restoration priorities keeping safety (public and worker) as the top priority. In most cases, based on best available information regarding the situation and available restoration resources, resources shall be dispatched to restore systems to achieve the following restoration priorities:

- **Public safety** in the affected areas;
- **Worker safety** in performing the restoration work;
- **Critical infrastructure** Sheriff's Department, hospital, Fire Department, key City & County facilities, other utility facilities (water, sewage, gas, communications), Airport, Traffic Control, Incident Commander Site, Incident Base Camp, Incident Evacuation Centers, communications (Spectrum and various cell providers), radio stations;
- Major commercial activities critical to **continuity of community services**: gas stations, food stores, supply stores, repair shops, eateries and lodging facilities to support outside first responders (CAL FIRE), as well as financial institutions.
- **Medical Baseline Customers** and **Access and Functional Needs Customers**
- **Number of customers** affected; and
- **Length of time** customers have been without power;

4.3.3. Restoration Progression. In directing restoration efforts to achieve the priorities of Section 4.2.2 above, the Operations Group shall generally find it most efficient to dedicate restoration resources to restoring the following types of facilities in the prescribed order to optimally restore electric service:

- Energy supply sources Southern California Edison (SCE) supply lines, Bear Valley Power Plant (BVPP), etc.
- Sub-transmission circuits (34.5 kV)
- Substations
- Distribution circuits (4 kV)
- Feeders
- Distribution transformers
- Individual customer service lines

Taking into account restoration priorities and progression, Table 4-3 below provides guidance on the restoration priorities for sub-transmission circuits, substations, and distribution circuits. This guidance must be tempered by many factors including the actual cause of the outage(s), available resources, time to conduct repairs, access to repair sites, etc. Therefore, the Utility Manager must have wide discretion when developing the specific restoration priorities and may choose to deviate from the general guidance.

### **Table 4-3: Restoration Priorities for Sub-Transmission Circuits, Substations, and Distribution Circuits**

## Bear Valley Electric Service, Inc. Emergency & Disaster Response Plan

Priority	Sub-Transmission Circuit	Substation	Distribution Circuit		Comments
1	Baldwin	Meadow	Garstin		<ul style="list-style-type: none"> <li>• Key critical infrastructure.</li> <li>• Connects BVPP</li> </ul>
2	Shay/Radford	Pineknot Village Maltby Division	Interlaken Boulder Harnish Country Club	Georgia Paradise Erwin Lake Castle Glen	<ul style="list-style-type: none"> <li>• Additional critical infrastructure</li> <li>• Major commercial activities &amp; airport</li> <li>• Large number of residential customer.</li> </ul>
3	NA	Moonridge Maple Bear City Fawnskin Palomino	Eagle Lagonita Fox Farm Clubview Sunset	Goldmine Holcomb Pioneer Sunrise	<ul style="list-style-type: none"> <li>• Mostly residential customers</li> </ul>
4	NA	Bear Mountain Summit Lake	Geronimo Skyline	Lift Pump House	<ul style="list-style-type: none"> <li>• Mostly interruptible customer.</li> </ul>

4.3.4. Loss or Significant Reduction of Energy Supply. BVES normally imports all of the supplies necessary to meet customer demand via SCE power lines and augments the supplies using the BVPP when the maximum capacity from the SCE Cottonwood lines are reached. Table 4-4 provides information on BVES system sources of power.

**Table 4-4: BVES System Sources of Power**

Source	Capacity	Comments
<b>Goldhill:</b> Includes SCE lines and facilities from Cottonwood (Doble, Cushenberry, Goldhill Switch Station, and Ute 1 & 2).	34 MW	Connected to the BVES system at the Shay and Baldwin Auto-Re-closers
<b>Radford:</b> Includes SCE line (Bear Valley) and facilities from Zanja.	5 MW	Connected to the BVES system at the Radford Auto-Re-closer
<b>Power Plant:</b> Includes Bear Valley Power Plant (BVPP) generation equipment and facilities.	8.4 MW	Seven 1.2 MW natural gas fired engines
Net Energy Metering & Distributed Energy Resources	3.3 MW	Distributed throughout system. Limited to day-light production only

Table 4-5 provides guidance on some of the more likely loss of energy supply scenarios to the BVES Service Area. Each of these scenarios assumes a complete loss of the affected power source(s). However, it should be realized that it is also possible that certain power sources may be degraded providing some limited capacity instead of being completely lost. In these cases, the Operations Group should follow the framework provided in Table 4-5 modified to take into account the limited supply capacity of the degraded power source(s).

**Table 4-5: Actions for Loss of Supplies**

Actions	Loss of all SCE Supplies (Goldhill & Radford)	Loss of SCE Goldhill Supplies	Loss of SCE Radford Supply	Loss of BVPP
Contact and coordinate with SCE.	Call SCE Lugo Substation and SCE Control Center Colton. Obtain system status, actions in progress or scheduled and	Call SCE Lugo Substation. Obtain system status, actions in progress or scheduled and ETR.	Call SCE Control Center Colton. Obtain system status, actions in progress or scheduled and ETR.	NA

## Bear Valley Electric Service, Inc. Emergency & Disaster Response Plan

Actions	Loss of all SCE Supplies (Goldhill & Radford)	Loss of SCE Goldhill Supplies	Loss of SCE Radford Supply	Loss of BVPP
	estimated time of restoration (ETR).			
Assess situation	Based on ETR for all or partial energy supplies and demand, take all or some of the actions specified below as appropriate.	Based on ETR for all or partial energy supplies and demand, take all or some of the actions specified below as appropriate.	If situation is long-term, work with interruptible customers to coordinate timing of their loads to reduce or eliminate interruptions.	If situation is long-term, work with interruptible customers to coordinate timing of their loads to reduce or eliminate interruptions.
Activate EOC	Yes – Level 1 Event	Yes – Level 2 Event	No – Level 3 Event	No – Level 3 Event
Switching Operations	Line-up system for BVPP Black Start Procedures	Express Radford to Meadow.	Shift Village Substation to Shay Line	NA
Dispatch BVPP	Execute BVPP Black Start Procedures and Start up Enginators one at a time being careful to not exceed the load capacity.	Start up Enginators one at a time being careful to not exceed the load capacity.	Start up Enginators as needed based on load.	Conduct actions to repair BVPP.
Interrupt interruptible customers	Will be required to meet demand.	Will be required to meet demand.	Possibly required to meet demand. Work with customers to coordinate demand to reduce or eliminate interruptions.	Possibly required to meet demand. Work with customers to coordinate demand to reduce or eliminate interruptions.
Rolling blackout procedures	Will be required to meet demand.	Will be required to meet demand.	Not likely required.	Not likely required.
Contract emergency mobile generation	Consider based on ETR if greater than 24 hours.	Consider based on ETR if greater than 24 hours.	Not likely required.	Not likely required.
Public Engagement	Work with community and stakeholder to reduce non-essential loads. Keep customers and stakeholders informed of ETR and rolling blackouts.	Work with community and stakeholder to reduce non-essential loads. Keep customers and stakeholders informed of ETR and rolling blackouts.	Not likely required.	Not likely required.
Compliance reporting	Conduct CPUC Major Outage Report per GO-166 due to greater than 50% of customers experiencing outage.	Conduct CPUC Major Outage Report per GO-166 due to greater than 50% of customers experiencing outage.	Conduct CPUC Major Outage Report per GO-166 if media coverage expected or occurs.	Not likely required.
Load forecasting	Energy Resources to provide detailed hourly forecasts and make recommendations to support load with BVPP and mobile generation.	Energy Resources to provide detailed hourly forecasts and make recommendations to support load with BVPP and mobile generation.	Energy Resources to provide detailed hourly forecasts and make recommendations to support load without Radford Line.	Energy Resources to provide detailed hourly forecasts and make recommendations to support load without BVPP.

4.3.5. Downed Wire Response. During a major storm, BVES may receive many trouble calls reporting primary and service lines down throughout the service area. Wires down that present an imminent fire or electrocution hazard or are identified as being primary distribution line voltage shall receive top priority. In general, higher priority shall be assigned to calls involving wires blocking state highways or wires down on buildings or vehicles. Personnel investigating downed wire shall determine the wire type (primary, secondary or service conductor) and take actions as directed by the SOS and per Table 4-6, Downed Wire Response.

**Table 4-6: Downed Wire Response**

Conductor	Action
Primary	



## Bear Valley Electric Service, Inc. Emergency & Disaster Response Plan

Conductor	Action
	<ul style="list-style-type: none"> <li>• If a fire has started or the threat of fire is imminent, call 911 and then call the SOS to have the circuit de-energized by the most rapid means possible (this may require dropping the main BVES supply transmission lines remotely).</li> <li>• Warn others to stay clear.</li> <li>• Isolate the area by setting up CAUTION tape and traffic cones and barriers.</li> <li>• Call into the EOC the exact location (address and pole numbers).</li> <li>• If wire is energized, but not a fire threat stay at site until Lineman Crew takes over or the line is de-energized.</li> <li>• Once line is de-energized, area isolated and/or Lineman Crew onsite, proceed to next location as directed by SOS.</li> </ul>
<b>Secondary</b>	<ul style="list-style-type: none"> <li>• If a fire has started or the threat of fire is imminent, call 911 and then call the SOS to have the circuit de-energized by the most rapid means possible.</li> <li>• Warn others to stay clear.</li> <li>• Isolate the area by setting up CAUTION tape and traffic cones and barriers.</li> <li>• Call into the EOC the exact location (address and pole numbers).</li> <li>• If wire is energized and located near a school, high pedestrian area, on a main roadway, or near a conductive structure, but not a fire threat stay at site until Lineman Crew takes over or the line is de-energized.</li> <li>• Once line is de-energized or it is determined that the area is low risk and the area isolated and/or Lineman Crew onsite, proceed to next location as directed by SOS.</li> </ul>
<b>Service</b>	<ul style="list-style-type: none"> <li>• If a fire has started or the threat of fire is imminent, call 911 and then call the SOS to have the circuit de-energized by the most rapid means possible.</li> <li>• Warn others to stay clear.</li> <li>• Isolate the area by setting up CAUTION tape and traffic cones and barriers.</li> <li>• Call into the EOC the exact location (address and pole numbers).</li> <li>• If wire is energized and located near a school, high pedestrian area, on a main roadway, or near a conductive structure, but not a fire threat stay at site until Lineman Crew takes over or the line is de-energized.</li> <li>• Once line is de-energized or it is determined that the area is low risk and the area isolated and/or Lineman Crew onsite, proceed to next location as directed by SOS.</li> <li>• If the line is disconnected from the pole, it is not necessary to isolate the area. Simply call the situation into the EOC and proceed to next location as directed by SOS.</li> </ul>

4.3.6. Sub-Transmission and Distribution (T&D) Casualties. The most common cause of outages for the BVES services area are casualties to T&D facilities resulting in a major outage, multiple outages of varying sizes, and/or some combination thereof. Restoration from these outages is mostly dependent on the available resources, which can quickly be overwhelmed if not properly managed.

4.3.6.1. The Operations Group shall prioritize restoration activities and resource allocation according to the general priorities identified in Section 4.3.2 and shall restore T&D facilities in the order listed in Section 4.3.3 to achieve these priorities. In establishing restoration priorities, public and worker safety is always the top priority.

4.3.6.2. SOS balances efforts to conduct repairs while attempting to restore service to as many customers as possible by isolating the damaged facilities to as close to the damage as feasible with the goal of minimizing the number of customers affected by the outage. The SOS should evaluate the time to isolate the damage and restore service to some customers against the estimated time to repair the damage and restore power to all customers. The most efficient and effective course of action shall depend on the extent of damage, availability of resources to conduct repairs, and availability of resources to perform switching operations.

## **Bear Valley Electric Service, Inc. Emergency & Disaster Response Plan**

4.3.6.3. Once damaged facilities are identified to the Operations Group, the SOS shall have the facilities field checked by the Damage Assessment Team (DAT) or by other competent staff, such as nearby field crews, to determine the extent of required repairs needed as well as the ability to isolate the damage and restore power to as many customers as possible.

4.3.6.4. Based on the results of the field check, the SOS shall:

- Determine the priority to repair the damages;
- Direct switching operations to restore power to as many customers as possible, if feasible;
- Determine the repair work scope (for example, temporary repair such as shoring up damaged facilities or permanent repair per BVES construction standards, etc.);
- Assign Engineering Planning resources as deemed necessary (for example, perform pole loading assessments for pole replacements);
- Schedule Field Crew resources as applicable;
- Direct assigned Field Crew to draw necessary materials and conduct repairs;
- Inform and periodically update the Public Information Group and Emergency Service Representatives so that they may keep customers and stakeholders informed; and
- Close out or cause to be closed out the applicable Field Activity.

4.4. **EOC and Emergency Response Workflows.** The EOC and emergency response workflows are designed to:

- Develop and maintain an accurate common operational picture.
- Continually assess damage and develop optimal restoration response.
- Dispatch resources for emergency restoration activities.
- Manage field activity reports.
- Keep customers and other stakeholders informed.
- Ensure restoration activities are properly resourced.

4.4.1. EOC Setup. The EOC shall be set up in accordance with Appendix A, EOC Preparedness and Setup Checklist. The Strategic Operations Supervisor in consultation with the Emergency Manager shall direct which applications are to be displayed on the available large screens and projector and how the white board shall be utilized. The displays should be optimized to provide EOC staff and decision makers an accurate common operational picture based on the best information available.

4.4.2. EOC Staffing. The following staff shall normally be present or represented as applicable in the EOC:

- Incident Commander
- Public Information Group
- Emergency Manager
- Strategic Operations Supervisor (SOS)
- System Monitor
- Damage Assessment Team (DAT) – when not assigned to the field

## **Bear Valley Electric Service, Inc. Emergency & Disaster Response Plan**

- Emergency Service Representative (ESR) – normally located in the Customer Service area to reduce noise level in EOC
- Engineering Technical Support
- IT Operations Support – normally located in IT spaces
- Logistics Group
- Planning Group
- Finance & Administration Group

4.4.3. Managing Field Activities. The Emergency Manager may find it useful to manage Field Activities by utilizing a spreadsheet to track each Field Activity by recording and sorting the following information:

- Field Activity Number
- Date
- Time
- Location
- Circuit
- Substation
- Status (Unassigned/Crew Assigned/Completed)
- ETR
- Grouping (often multiple Field Activities are resolved when a common fault/damage location is repaired)
- Customer call back
- Comments
- Other information as deemed necessary by the Emergency Manager

4.4.4. Workflows. The EOC shall process incoming damage reports and service request as Field Activities using the workflows shown in Appendix F, Emergency Response Workflows. The emergency response workflows are provided for Level 1 and 2 activations. For reference, the Level 3 (normal service response) is also provided. The Utility Manager may direct deviations to the workflows if it is determined that a more effective and efficient workflow process may be achieved. When conducting after action reviews for emergency response events as well as the annual Emergency Preparedness and Response Plan drill, the Appendix F, Emergency Response Workflows, should be evaluated for possible changes and improvements, and updated if deemed appropriate.

4.4.5. Situation Report. Developing a common operational picture is an important function of the EOC staff in order to ensure decision making is optimal. One essential tool in developing the common operational picture is to periodically update a Situation Report (SITREP). Appendix G provides an example SITREP. The SITREP should be updated by the SOS at least once per shift and more often if conditions are rapidly changing. The SITREP should be displayed in the EOC and sent to the Incident Commander, Public Information Group, EOC Group Leaders, Emergency Service Representatives, and others as deemed appropriate by the Emergency Manager.

## **Bear Valley Electric Service, Inc. Emergency & Disaster Response Plan**

4.4.6. Damage Assessments. The Damage Assessment Team(s) shall be dispatched from the EOC to investigate Field Activities and other damage reports. They shall complete a Damage Assessment form and provide it to the SOS. Appendix H provides a sample Damage Assessment Form. If they have several sites to visit, they may consider taking a picture of the completed form and sending to the EOC. Also, the DAT should take as many pictures needed to identify the damage and allow for the Engineering Team to plan the necessary repair work for the line crews. For example, the DAT should take pictures of any damaged equipment and facilities so that material may be pulled and staged for the line crews. Also, the DAT may make use of tools such as FaceTime to communicate with the EOC and provide the EOC a complete assessment of the damage conditions and the iRestore First Responder app to quickly make a basic report with location and a picture.

4.4.7. Work Orders. The SOS shall direct the use of Work Order jackets for the more complex repairs so that the scope of work performed and material and equipment utilized is properly documented. These Work Order jackets should include one-line diagrams and material sheets as applicable along with specific instructions from Engineering & Planning if warranted. Appendix I provides a sample Work Order Jacket.

4.5. **Resources**. Using best available information, the Utility Manager shall continually assess the following:

- Resources necessary to execute the restoration activities in a safe, effective and efficient manner;
- Available resources in the Service Area;
- Gaps in resource availability to execute the restoration activities in a safe, effective and efficient manner; and
- When resources from outside entities such as CUEA mutual aid and/or contracted resources may be released.

Based on the above assessments, the Utility Manager shall coordinate with the Logistics Group leader to request additional resources as necessary to fill resource gaps and to relinquish resources when no longer required. Possible resources in addition to BVES resources include CUEA mutual assistance, contracted services and Big Bear Valley Mountain Mutual Aid Association.

4.5.1. California Utilities Emergency Association (CUEA). The Utility Manager shall determine if gapped resources are best provided by utilizing the hCUEA Mutual Aid Agreement, which allows member utilities to request and obtain labor, materials, and/or equipment resources from other member utilities in a rapid manner on a reimbursable basis. The specific process for requesting and receiving mutual aid from member utilities is provided in the CUEA Mutual Aid Agreement. Table 4-7, CUEA Mutual Assistance Process, provides a summary of the process for requesting and receiving CUEA mutual assistance.

### **Table 4-7: CUEA Mutual Assistance Process**

## Bear Valley Electric Service, Inc. Emergency & Disaster Response Plan

Process Step	Responsibility	Amplifying Comments
Determine if CUEA Mutual Aid <b>may</b> be required	Utility Manager	The Operations Group evaluates if CUEA resources may be required and if there is a possibility, this should be communicated to the Logistics Group.
Issue a "Mutual Assistance Inquiry Only"	Logistics Group Leader	<p>Providing the CUEA Staff with a Mutual Assistance Inquiry Only allows the CUEA to alert member utilities so that they may evaluate which resources are available without incurring costs. This request is best made via email but it may also be made via phone call. The following information should be included in the inquiry:</p> <ul style="list-style-type: none"> <li>• BVES Contact Name</li> <li>• BVES Contact Phone Number</li> <li>• BVES Contact Email</li> <li>• Type of Emergency</li> <li>• Type of Assistance Requested</li> <li>• Desired Date &amp; Time Needed</li> <li>• Additional Details or Comments</li> </ul>
Determine that CUEA Mutual Aid <b>is</b> required.	Utility Manager	Obtain Incident Commander's authorization to proceed with CUEA mutual aid request and then, request Logistics Group make arrangements.
Issue a "Mutual Assistance Formal Request"	Logistics Group Leader	<p>Send the CUEA Staff a Mutual Assistance Formal Request with following information:</p> <ul style="list-style-type: none"> <li>• BVES Contact Name</li> <li>• BVES Contact Phone Number</li> <li>• BVES Contact Email</li> <li>• Type of Emergency</li> <li>• Type of Assistance Requested</li> <li>• Desired Date &amp; Time Needed</li> <li>• Additional Details or Comments</li> </ul> <p>This request is best made via email but it may also be made via phone call and then followed up by email.</p>
Pre-arrival coordination	Logistics Group Leader	<p>Once a member utility (referred to as "Assisting Party") agrees to provide resources, the Logistics Group shall work with the Assisting Party point of contact to facilitate all logistics arrangements to include mobilization through demobilization. Specifically, the following information should be obtained:</p> <ul style="list-style-type: none"> <li>• Date and estimated time of arrival of the Assisting Party resources</li> <li>• Name and contact information of the Assisting Party's Team leader</li> <li>• Names and contact information of the Assisting Party Team members</li> <li>• How lodging will be handled <sup>1</sup></li> <li>• How meals will be handled <sup>2</sup></li> </ul>
Mutual Assistance Agreement Letter	Finance & Administration Group Leader	Once the pre-arrival information is verbally agreed upon, the Finance & Administration Group shall draft the Mutual Assistance Agreement Letter, route it to the Utility Manager and Logistics Group Leader for review and to the Incident Commander for approval signature. Appendix G, Mutual Assistance Agreement Letter, provides a sample letter.

## Bear Valley Electric Service, Inc. Emergency & Disaster Response Plan

Process Step	Responsibility	Amplifying Comments
Setup Assisting Party in BVES Accounts Payable System	Finance & Administration Group Leader	Coordinate with the Assisting Party to ensure they are able to invoice BVES in accordance with the CUEA Mutual Aid Agreement. Provide the Assisting Party invoicing instructions to ensure timely payments.
Mobilization	Logistics Group Leader	Coordinate with Assisting Party Team Leader and local facilities to ensure lodging is ready and assist in resolving any arrival issues such as providing information on access to Big Bear Lake, chain requirements and any other travel support (such as permission to pass through areas that may be closed to general public).
Arrival Meeting	Utility Manager and Logistic Group Leader	Upon arrival of the Assisting Party, the Utility Manager and Logistic Group Leader shall meet with the Assisting Party Team Leader, introduce key staff, and go over the following: <ul style="list-style-type: none"> <li>• Safety procedures<sup>3</sup></li> <li>• Coordination meetings<sup>4</sup></li> <li>• Communications<sup>5</sup></li> <li>• Work controls and construction standards<sup>6</sup></li> <li>• Material usage<sup>7</sup></li> <li>• Situation update<sup>8</sup></li> </ul>
Tour of Facilities	Utility Manager	Following the Arrival Meeting, the Utility Manager shall have a BVES employee provide the Assisting Party with a brief orientation tour of key facilities essential to supporting their work including the following: <ul style="list-style-type: none"> <li>• EOC</li> <li>• Warehouse</li> <li>• Stockyard</li> <li>• Where to park trucks</li> <li>• Material disposal</li> <li>• Hazmat disposal</li> <li>• Other logistics support (for example, where to fuel trucks)</li> </ul>
Demobilization and Departure Out Brief	Utility Manager and Logistic Group Leader	Ensure lodging checkout is completed and bills are paid. Copy receipts. Review material used by Assisting Party and resolve any documentation issues. Discuss any lessons learned or areas for improvement to allow the Assisting Party to be more effective in the future.
Compensation	Utility Manager and Accounting Supervisor	Coordinate with Assisting Party to review invoices in accordance with the CUEA Mutual Aid Agreement with all of the supporting documentation. The Utility Manager should be the approving manager for the invoices.

**Notes:**

<sup>1</sup>It is BVES's responsibility to make lodging arrangements; however, an Assisting Party may desire to make lodging arrangements on their own and be reimbursed per the Mutual Aid Agreement.

<sup>2</sup>It is BVES's responsibility to provide meals; however, an Assisting Party may desire to make meal arrangements on their own and be reimbursed per the Mutual Aid Agreement.

<sup>3</sup>Review BVES safety procedures to include tailboard policy and documentation, grounding policy, lock-out/tag-out policy, confined space policy and the BVES Accident Prevention Manual.

<sup>4</sup>Agree upon how the Assisting Party shall interact and receive direction on work from the Operations Group. Sometimes it might be efficient for the Assisting Party to have the Team Leader spend time in the EOC with the Operations Group and out in the field with the Assisting Party crews. Other options include having the Crew Forman check-in before and after each shift.

<sup>5</sup>Establish lines of communications with the Assisting Party Team Leader and crews. They may include cell phones and/or BVES provided radios.

<sup>6</sup>Brief the Assisting Party on BVES work controls including how work will be directed and construction standards used by BVES. Ensure Assisting Party understands what they are permitted to do and when they must seek Engineering approval for any deviations.

<sup>7</sup>Brief the Assisting Party on BVES material control and documentation procedures. Also, agree upon how to replenish truck stock.

## Bear Valley Electric Service, Inc. Emergency & Disaster Response Plan

Process Step	Responsibility	Amplifying Comments
--------------	----------------	---------------------

<sup>8</sup>Brief the Assisting Party on the current situation, damage assessments and services that the Assisting Party shall be required to perform. This is an excellent opportunity to develop an initial game plan with the Assisting Party.

4.5.2. Contracted Services. Contracted Services as listed in Table 3-1 should be in place such they may be readily requested. The Utility Manager shall determine which contracted services are needed and the specific scope of work and provide this information to the Logistics Group Leader. The Logistics Group Leader shall contact the requested contracts and make the arrangements to receive the services. Appendix C, Contingency Contracted Services, provides contact information for anticipated contract services.

4.5.2.1. The Logistics Group shall work with the contractor(s) to establish the specific estimated time of arrival, mobilization and demobilization support needed, and the onsite contractor supervisor/foreman contact information.

4.5.2.2. Upon arrival of contracted crews, the Utility Manager, Field Operations Supervisor, and Logistic Group Leader shall meet with the contractor supervisor, introduce key staff, and go over the following:

- **Safety procedures:** Review BVES safety procedures to include tailboard policy and documentation, grounding policy, lock-out/tag-out policy, confined space policy and the BVES Accident Prevention Manual.
- **Coordination meetings:** Agree upon how the contractor shall interact and receive direction on work from the Operations Group. Sometimes it might be efficient for the contractor to have the supervisor spend time in the EOC with the Operations Group and out in the field with the contractor crews. Other options include having the Crew Forman check-in before and after each shift.
- **Communications:** Establish lines of communication with the Assisting Party Team Leader and crews. They may include cell phones and/or BVES provided radios.
- **Work controls and construction standards:** Brief the contractor on BVES work controls including how work shall be directed and construction standards used by BVES. Ensure contractor understands what they are permitted to do and when they must seek Engineering approval for any deviations.
- **Material usage:** Brief the Assisting Party on BVES material control and documentation procedures. Also, agree upon how to replenish truck stock.
- **Situation update:** Brief the contractor on the current situation, damage assessments and services that the contractor shall be required to perform. This is an excellent opportunity to develop an initial game plan with the contractor.

4.5.2.3. Following the Arrival Meeting, the Utility Manager shall have a BVES employee provide the contractor with a brief orientation tour of key facilities essential to supporting their work including the following:

- EOC
- Warehouse
- Stockyard
- Where to park trucks

## **Bear Valley Electric Service, Inc. Emergency & Disaster Response Plan**

- Material disposal
- Hazmat disposal
- Other logistics support (for example, where to fuel trucks)

4.5.2.4. Once the Utility Manager releases the contractor from providing further services, an out brief meeting shall be conducted with the contractor supervisor, Utility Manager and the Logistics Group Leader to ensure the following: lodging checkout is completed and bills are paid (if BVES handled mobilization); review material used by contractor and resolve any documentation issues; and discuss any lessons learned or areas for improvement to allow the contractor to be more effective in the future.

4.5.2.5. If a contract is not in place for contracted services that are determined to be necessary for emergency response actions, the Utility Manager may direct, with the President's prior approval, that emergency contracting procedures per the BVES's procurement policy be executed to obtain the required services. Any verbal service requests should be followed up as soon as feasible in writing (normally by email) by the Logistics Group with the applicable contractor. The email should include the scope of work and price. This should then be followed up with the appropriate procurement documents (for example, contract, service purchase order, etc.).

4.5.3. Big Bear Valley Mountain Mutual Aid Association ("MMAA"). While MMAA does not have power line construction and repair resources, they do have access to significant support resources including traffic controls, road clearing services, coordination with local government agencies, other utilities, and other nongovernmental organizations, and communications with the public. Additionally, one of the most significant strengths of MMAA is its ability to coordinate through its member organizations support and relief for customers experiencing extended sustained major power outages. This may include health and welfare checks, shelters, meals, cooling centers, restroom and shower stations, etc. Therefore, when the Utility Manager determines that some of these resources are needed, he/she shall inform the Logistics Group Leader who shall coordinate with MMAA in accordance with the MMAA Agreement to request and obtain the desired resources. Coordination with MMAA supplied resources should include Point of Contact, resource estimated time of arrival, appropriate briefings and facility tours by the Operations Group (use the guidance in Section 4.3.1), and agreement on reimbursement if applicable.

4.6. **Catastrophic Events Memorandum Account (CEMA)**. CEMA is a process to establish an account to allow utilities to recover the incremental costs incurred to repair, restore or replace facilities damaged during a disaster declared by the appropriate federal or state authorities. If a catastrophic event is declared a state of emergency by the state or federal government, then utilities can record costs caused by the event in this memorandum account. It should be noted that the utility cannot record or request recovery of costs incurred before the date the event is declared a state of emergency. By recording these costs, the utilities can later ask for recovery of these costs from the Commission. The CPUC then reviews these costs and approves them as appropriate.

4.6.1. Anytime the EDRP is activated, accurate records of expenses, labor hours, materials and other costs incurred during the recovery from the disaster shall be maintained such that the



## **Bear Valley Electric Service, Inc. Emergency & Disaster Response Plan**

incremental costs of recovery efforts may be documented in the event CEMA is invoked. The Finance and Administration Group shall provide specific guidance to Staff to ensure accurate records are maintained. Note that often a state of emergency is declared after the event and recovery have transpired, so each EDRP activation should be treated as a CEMA event.

4.6.2. The President shall coordinate with the Regulatory Affairs Manager to ensure that after a state of emergency occurs and BVES begins booking costs resulting from the event, that a letter is sent to the CPUC Executive President within 30 days. The letter shall provide not only the details of the disaster but also an estimate of the costs to be incurred. The Finance and Administration Group shall develop the estimate for the letter with input from the Operations Group.

4.6.3. Regulatory Affairs Manager shall request cost recovery of the CEMA in a formal proceeding. The Utility Manager with assistance from Accounting Supervisor shall provide the necessary details to support Regulatory Affairs in the CEMA filing.

4.7. **Evacuation.** In the event public officials declare an evacuation order, for all or parts of the Big Bear Valley area, staff's first priority is to address the immediate needs and safety of themselves and family, and once that is taken care of then each employee has a role to play as follows.

4.7.1. Critical Workers. Certain staff are considered Critical Workers and are issued an Emergency Pass by the San Bernardino County Sheriff's Department. The Emergency Pass is only to be used for BVES work and in accordance with local authority instructions. The Emergency Pass should never be used for personal reasons. BVES Critical Workers are:

- President
- Utility Manager
- Field Operations Supervisor
- Utility Engineer & Wildfire Mitigation Engineer
- Senior Technical Operations Support Specialist
- All Linemen
- Field Inspector
- Substation Technician
- Meter Technician
- Power Plant Operators
- Other staff as designated by the Utility Manager

Every two years the Administrative Support Associate shall request new Emergency Passes for the BVES staff classified as critical workers. Also, when new staff arrive the Administrative Support Associate shall obtain an Emergency Pass for them if they are classified as critical workers.

4.7.2. Evacuation Order. In the event government authorities declare an evacuation order for the Bear Valley area, all staff shall follow the evacuation procedure. For partial evacuation orders, the Utility Manager shall evaluate the extent and impact of the partial evacuation and determine if this procedure should be executed and if modifications to the procedure are

## **Bear Valley Electric Service, Inc. Emergency & Disaster Response Plan**

warranted. For example, an evacuation order for Fawnskin only would likely result in BVES implementing its EDRP and staffing its EOC, the evacuation procedures would likely not need to be executed.

### 4.7.2.1. Utility Manager shall:

- Direct all non-evacuated staff actions.
- Implement the EDRP.
- Consult the local government Incident Commander (IC) and/or applicable Emergency Operations Center (City of Big Bear Lake or San Bernardino County OES) and determine the desired condition of the distribution system and any support needed.
- Place the distribution system in a safe condition while supporting as practicable the IC's efforts.
- Determine the necessary support staff required to safely operate the system and in consultation with the local government IC where they should be located. If the local government IC determines support staff may safely be located at the BVES Main Office, then that is preferred. If it is not safe to remain at the BVES Main Office, the BVES support staff shall relocate to the Base Camp being utilized by the IC or other designated area as agreed upon by the IC.
- Inform the President of the plan.
- Provide instructions to Critical Workers.
- Release any staff who are no longer needed and direct them to safely evacuate.
- When the evacuation order is lifted, direct restoration activities as needed and the return to normal operations.

### 4.7.2.2. Staff classified as Critical Workers shall:

- Report to the designated area as directed by the Utility Manager. Support staff relocating to the Base Camp or other designated area shall bring utility trucks and equipment as determined necessary by the Utility Manager.
- Dispatch to perform tasks as directed by the Operations Group. BVES staff dispatched to perform tasks in the evacuated areas shall always perform these tasks in at least pairs and shall conduct a communications and status check with the Operations Group at least hourly.
- BVES Staff representative should be assigned to the IC's Base Camp to coordinate any support needed. BVES Representative assigned to the local government IC Base Camp or an EOC shall be designated by the Utility Manager, knowledgeable of the BVES distribution system, and have direct access to the Utility Manager such that IC and/or EOC requests are not delayed.
- Consideration shall also be given to providing BVES Staff representative to supporting Emergency Operations Center (City of Big Bear Lake or San Bernardino County OES).
- Released critical workers in the affected areas should evacuate in a safe manner off the mountain in a safe and orderly manner following local authority instructions. Report to the General Office in San Dimas, CA or other area as designated by the Energy Resources Manager.

## Bear Valley Electric Service, Inc. Emergency & Disaster Response Plan

4.7.2.3. Non Critical Worker Staff in the affected areas should evacuate in a safe manner off the mountain in a safe and orderly manner following local authority instructions. Report to the General Office in San Dimas, CA or other area as designated by the Energy Resources Manager.

4.7.2.4. Energy Resources Manager shall:

- Direct all evacuated staff actions.
- If the General Office is not to be used as the evacuation point, designate a suitable area for evacuated staff to gather.
- Perform an accounting of the whereabouts of all BVES staff. Inform the President.
- Setup remote support EOC and establish the Planning, Logistics, and Finance & Administration Groups with available staff.
- Establish continuous and reliable communication lines with Operations Group remaining in the service area.
- Provide resources as requested by the Operations Group.
- Provide updates to President, Regulatory Affairs, and Senior GSWC Staff.
- Make preparations to obtain utility mutual assistance via the California Utilities Emergency Association (CUEA) and/or contracted Linemen as determined necessary by the Operations Group.
- When the evacuation order is lifted, coordinate with the President and Utility Manager the orderly and safe return of staff to the service area.

4.7.2.5. Customer Supervisor shall:

- Establish remote customer service support.
- Update public information media as applicable (press releases, website and social media updates, IVR messages, etc.).

4.8. **End State.** The Utility Manager shall direct the transition from emergency response operations under this plan (Level 1 or 2) to normal operations (Level 3) when the following conditions are met:

- BVES system is no longer at risk for continued disruptions due to the incident.
- BVES power supplies are have been restored to meet service area load demand and are evaluated as reliable.
- BVES sub-transmission system is restored to meet service area power delivery needs and is evaluated as reliable.
- BVES substations and distribution systems are restored to meet service area power delivery needs and are evaluated as reliable.
- Response crews have been demobilized.
- System issues and problems are within the normal Level 3 response capabilities.
- Long-term customer support has been established as necessary (for example, following a declaration of a state of emergency because a disaster has either resulted in the loss or

## **Bear Valley Electric Service, Inc. Emergency & Disaster Response Plan**

disruption of the delivery or receipt of utility service and/or resulted in the degradation of the quality of utility service) and is capable of being properly managed by the normal supervisory element.

Generally, the transition from Level 1 shall be progressive to Level 2 as emergency response requirements wind down and then to Level 3.

4.9. **After Action Reports.** Once the incident is officially terminated, the Utility Manager shall schedule and conduct formal hot washes/debriefing sessions with applicable staff and have an After Action Report prepared. The After Action Report should include:

- Dates/times of the incident
- Description of the incident
- Level of plan activation and if the EOC was staffed
- Records of public communications that were performed
- List of damages to system
- List of personal deaths, injuries, and other accidents associated with the incident
- List of external (contracted and mutual aid) resources utilized
- Develop incremental cost of emergency response actions
- Lessons learned
- Evaluation on whether or not the plan was properly followed
- Specific improvement actions including assignment of responsibility to complete and due date

A thorough follow-up includes reviewing all plans and procedures, making the necessary revisions from lessons learned, and ensuring distribution to all stakeholders/plan holders.

#### 4.10. **Annual Emergency Response Plan Training and Exercise.**

4.10.1. Annual Training. The Utility Manager shall conduct staff training for designated personnel on the Emergency Response Plan in preparation for emergencies and major outages each year just before the winter storm season; typically, in September or October. The training shall be designed to overcome problems identified in the evaluations of responses to a major outage or exercise and shall reflect relevant changes to the plan.

4.10.2. Annual Exercise. The Utility Manager shall conduct an exercise annually using the procedures set forth in this emergency plan. If the BVES uses the Emergency Response Plan during the twelve-month period in responding to an event or major outage, the annual exercise is not required for that period. However, the Utility Manager should also evaluate whether or not staff would benefit from the exercise regardless of the fact that the Emergency Response Plan was utilized within the previous 12-month period. For example, if a major change to the Outage Management System is installed since the last Emergency Response Plan activation, it would be appropriate to at a minimum exercise that portion of the plan.

4.10.3. Exercise Notice. The Utility Manager shall provide no less than ten days' notice of the annual exercise to appropriate state and local authorities, including the CPUC, state and

## **Bear Valley Electric Service, Inc. Emergency & Disaster Response Plan**

regional offices of the OES or its successor, the California Energy Commission, and emergency offices of the counties in which the exercise is to be performed.

4.10.4. Exercise Evaluation. The response to an exercise or major outage shall be evaluated per Section 4.9. The evaluation shall be provided to Regulatory Affairs Manager so that it may be forwarded to the CPUC as part of the report required by GO-166 Standard 11.

4.10.5. Emergency Response Outreach Training. The Utility Manager shall conduct outreach with the county and city emergency response officials and participate as applicable in other emergency exercises designed to address problems on electric distribution facilities or services, including those emergency exercises of the state and regional offices of the OES or its successor, and county emergency offices.

4.11. **Initial Notification**. The Utility Manager shall ensure that the notifications in accordance with the requirements provided in BVES's Electric Utility Emergency Reporting Policy and Procedures are achieved within the required timeframes.

## **Bear Valley Electric Service, Inc. Emergency & Disaster Response Plan**

### **5. Emergency Response Communications Plan.**

5.1. **Strategy Overview.** Achieving unity of effort provides for the most effective and efficient emergency response. This is best attained through the “4 C’s” of disaster planning:

- Collaboration
- Cooperation
- Coordination
- Communication

The first three hinge upon effective communications. The overall communications strategy is structured so that all stakeholders receive accurate, timely and consistent information, with an overall message for safety of the public, employees and contractors. Communications with local government agencies, customers and other stakeholders are vital to the successful implementation of the EDRP. The plan aims to identify who should be given specific information, when that information should be delivered, and what communication channels shall be used to deliver the information.

During a major outage the Operations Group shall make it a priority to provide the following information to the Public Information Group:

- **Extent of the outage** – using our Outage Management System (OMS) and available field assessment and data, determine how many customers are affected and in which areas
- **Cause of the outage** – provide in broad terms. If unknown, provide status of crews responding to investigate including updating once the power has been restored.
- **Estimated time of restoration (ETR)** – this is the key information customers want to know. If unknown, state so and update as more information becomes available. Don’t let ETRs become stale (for example, if a posted ETR is extended, update the posting with a revised ETR).

The Customer Service Supervisor is responsible for updating and executing the BVES communications plan in support of the EDRP. The Utility Manager is responsible for ensuring that accurate information from the Operations Group flows to staff responsible for executing the communications plan.

Additionally, the Customer Service Supervisor shall maintain “call center metrics” that measure customer access to information on customer service calls and web host availability during an emergency or disaster.

5.2. **Establish Multiple and Effective Communication Channels.** Establishing a multilayered communications plan utilizing many separate communications channels is essential to ensuring that the communications plan shall be effective in reaching targeted audiences under uncertain and severe conditions, as would be expected for major outages and disasters and/or following such events. For example, some customers may lose their landline capability in a power outage but still have cell phone service. Plan resiliency, therefore is dependent on having many overlapping layers of communications.

## **Bear Valley Electric Service, Inc. Emergency & Disaster Response Plan**

### 5.2.1. Outbound Communications

- BVES website
- BVES social media
- Online meetings/broadcasts
- Interactive Voice Response System
- Press releases to local media
- Press conference
- Phones – landlines, mobile cellular, and satellite lines
- Email
- Two-way text messaging
- Door hangers
- Keeping staff who interact with customers informed with latest message
- Advertising
- Community workshops and presentations
- Mail (for example, flyers, newsletters)
- Bill inserts
- County and City communication systems
- Big Bear Chamber of Commerce email blast
- City email blast
- Bear Valley local government, agencies and utilities Public Information Group

### 5.2.2. Inbound Communications:

- Interactive Voice Response System
- Call center phone lines
- BVES social media
- Customer service windows
- Bear Valley local government, agencies and utilities Public Information Group
- Phones – landlines, mobile cellular, and satellite lines
- Email
- Text messaging
- Activate internal PSPS list
- Press inquiries
- iRestore Reports

### 5.2.3. Internal Communications:

- Phones – landlines, mobile cellular, and satellite lines
- Email
- Text messaging
- FaceTime, Skype, Online Meetings, etc.
- Intranet – shared drives, internal applications, and SharePoint
- Radios – VHF

## Bear Valley Electric Service, Inc. Emergency & Disaster Response Plan

- Direct reports

5.2.4. There are many developing and evolving communications technologies; therefore, it is essential that staff continually evaluate the above lists and modify as applicable. Changes should be evaluated each time the plan is updated.

5.2.5. Besides having multiple communications channels, there are three other elements that are essential to ensuring an effective communications strategy:

- Testing and exercising the communications channels frequently so that staff are trained on their usage, target audiences and key stakeholders are familiar with them, and technical issues are resolved prior to an actual emergency. Once testing and exercising of communication channels is complete, adjustments will be made based on lessons learned.
- Establishing good business relationships and rapport with target audiences and key stakeholders prior to any emergency.
- Maintaining accurate contact information with key stakeholders per Section 3.11 (Key External Contacts List) of this plan.

5.3. **Conduct Pre-Incident Outreach and Education.** BVES has developed a multi-level approach to community education and outreach related to public awareness of outages, emergencies, and emergency preparedness. An important aspect of managing expectations is to conduct education and outreach with customers and key stakeholders well in advance of any emergency. This allows target audiences the opportunity to be ready and provides them the knowledge of what to expect and how to prepare in the event of an emergency such as an extended outage due to a major winter storm or other natural disaster. *A community that is knowledgeable and ready for emergency events will be a force multiplier in emergency response actions.*

5.3.1. City and County Outreach. The Utility Manager shall coordinate with city and county officials in compliance with Public Utilities (P.U.) Code Section 768.6, which requires the following outreach by BVES:

- In developing and adopting an emergency and disaster preparedness plan, BVES shall invite appropriate representatives of every city and county within the BVES service area to meet with, and provide consultation to BVES.
- BVES shall provide the point of contact designated by the city and county with an opportunity to comment on draft emergency and disaster preparedness plans.
- Every two years, in order to update and improve BVES's emergency and disaster preparedness plan, BVES shall invite appropriate representatives of every city and county within its service area to meet with, and provide consultation to BVES. All recommendations and input will be considered and updated should it be determined to be beneficial for the EDRP. The meeting shall be noticed and shall be conducted in a public setting that allows for the participation of appropriate representatives of counties and cities within the BVES service area. Participating counties and cities shall be provided with the opportunity to provide written and verbal input regarding BVES's emergency and disaster preparedness plan. For purposes of this public meeting, BVES may convene a closed meeting with



## **Bear Valley Electric Service, Inc. Emergency & Disaster Response Plan**

representatives from every city and county within its service area to discuss sensitive security-related information in BVES's emergency and disaster preparedness plan and to solicit comments.

- BVES shall notify the commission of the date, time, and location of the above meeting. BVES shall memorialize the meeting and shall submit its records of the meeting to the commission.
- BVES may comply with the meeting requirement that is ordered by the Public Utilities Code by : i) making a presentation regarding its emergency and disaster preparedness plan at a regularly scheduled public meeting of each disaster council created pursuant to Article 10 (commencing with Section 8610) of Chapter 7 of Division 1 of Title 2 of the Government Code within BVES' service area; or ii) at a regularly scheduled public meeting of the governing body of each city located within the service area.

5.3.2. General Public, Customer and Stakeholder Outreach and Education (before an emergency). Utilizing BVES website, social media, public workshops, meetings with key stakeholders, press releases, advertising, newsletters, bill inserts, two-way text communication, IVR, and other communications channels, the Utility Manager and Customer Service Supervisor shall work to educate, inform and conduct outreach with the general public, customers and stakeholders such as local government and agencies, community groups and other utilities on the following topics:

- Customer power outage readiness preparation, including publishing a customer checklist for outages
- Backup generators and safety training
- Reporting outages
- Reporting wire down events and how to handle the situation
- Public Safety Power Shutoff policies
- Wildfire prevention measures including the vegetation management, covered wire, and distribution system inspection programs
- Operational initiatives that support wildfire prevention efforts such as re-closer and circuit patrol policies
- Outage restoration strategies used by BVES
- Infrastructure projects to improve safety, reliability and mitigate wildfires
- Other topics as deemed appropriate by the Utility Manager and/or Energy Resources Manager

In addition to the above outreach, the Utility Manager shall endeavor to periodically brief key elements of the EDRP at Big Bear Valley Mountain Mutual Aid Association ("MMAA") meetings, Big Bear Joint Utility meetings, Big Bear Fire Department and Sheriff's Department leadership.

The Utility Manager and Customer Service Supervisor shall develop and implement a strategy to periodically brief local government and agencies on BVES' emergency response plan. During these interactions, it is important to establish business relationships with local government and its agencies, other key community stakeholders, and other utilities so that during emergencies the BVES Leadership Team may seamlessly engage these groups. The

## **Bear Valley Electric Service, Inc. Emergency & Disaster Response Plan**

Utility Manager and Customer Service Supervisor shall develop a contact list of the key staff at local government and agencies to notify during emergency events. The contact list should include preferred and back-up means of contact (for example, mobile phone number, email, office phone, etc.). The contact list shall be verified, corrected and updated as necessary at least every six months by the Administrative Support Associate.

The list of local government and agencies and key stakeholders shall include at a minimum the following organizations:

- Local officials (City of Big Bear Lake (CBBL) and San Bernardino County)
- State officials (normally CPUC Energy Division and Safety Enforcement Division)
- San Bernardino County Office of Emergency Services (County OES)
- Big Bear Fire Department
- California Department of Forestry and Fire Protection (CAL FIRE)
- U.S. Forest Service
- San Bernardino County Sheriff's Department Big Bear Lake Patrol Station
- California Highway Patrol (CHP) Arrowhead Area
- California Department of Transportation (Caltrans)
- Big Bear Area Regional Wastewater Agency (BBARWA)
- Big Bear City Community Services District (CSD)
- Big Bear Lake Water Department (DWP)
- Big Bear Municipal Water District (MWD)
- Southwest Gas Corporation
- Bear Valley Community Hospital
- Bear Valley Unified School District
- Big Bear Chamber of Commerce
- Big Bear Airport District
- Big Bear Mountain Resort
- Local communication companies (Spectrum and various cell providers)

**5.4. Provide Outreach in Prevalent Languages.** United States Census data shows that the top three primary languages used in California are English, Spanish and Chinese (including Cantonese, Mandarin and other Chinese languages). BVES shall communicate its emergency preparedness outreach and response in English, Spanish, Chinese (including Cantonese, Mandarin and other Chinese languages), Tagalog, and Vietnamese. Additionally, BVES has included two indigenous languages (Zapateco and Mixteco) as part of its wildfire mitigation communications.

**5.5. Provide Emergency Incident Communications.** Utilizing the multiple communications channels discussed earlier, the Public Information Group and Emergency Response Leadership Team shall engage and educate the general public, local government and its agencies, and other key stakeholders to provide notification of outages and emergencies, estimated time to restore service, cause of outage (if known), and periodic updates as appropriate. The following sections provide detail on how these communications shall be conducted.

## **Bear Valley Electric Service, Inc. Emergency & Disaster Response Plan**

5.5.1. Set Expectations and Develop Trust. When an emergency occurs, BVES shall communicate with the general public, customers, local government and its agencies, and key stakeholders as soon as possible to set expectations and address emergency issues. When business operations or households are disrupted by power outages, customers expect to know how long they shall be impacted. Thus, estimated restoration times (ETRs) shall be developed, monitored, adjusted and communicated. Establishing ETRs is a key function of the Operations Group. Regulators and local government officials shall be notified regarding the impact to communities per GO 166 Standard 6. Customer Service Supervisor shall:

- Work with BVES's public relations contractor subject matter experts (SMEs) to develop consistent and accurate BVES messaging to customers and stakeholders.
- Employ consistent and frequent multi-channel communications to disseminate information that leverage and reinforce one another.
- Brief employees; especially field staff and customer service representatives, on the latest information so that their interactions with the public are consistent with the messaging.
- Coordinate closely with the Operations Group to provide customers and stakeholders system updates including best known restoration times.
- Ensure that all communications are accurate and always factually correct. If incorrect information is inadvertently issued, then it is important that a correction be issued as soon as known and that the error be acknowledged. If information is not certain, then avoid reporting it or qualify it as appropriate. For example, "BVES has received reports of a downed tree on its power lines on Moonridge Road; field crews have been dispatched to validate the report and assess any damage that may have resulted."
- Strive to be transparent; it is absolutely critical to our credibility and to ensuring that the public, customers and stakeholders have the upmost confidence in our ability to perform our essential public service – providing safe, reliable, and high quality electric service.
- Per GO 166 Standard 6, BVES shall provide an initial notification within one hour of the identification of a major outage or other newsworthy event. BVES shall also notify the Commission and San Bernardino County Warning Center at the Office of Emergency Services of the location, possible cause and expected duration of the outage. The Warning Center at the OES is expected to notify other state and local agencies of the outage. Subsequent contacts between state and local agencies and BVES shall be conducted between personnel identified in advance, as set forth in Standard 4.B (Communications Strategy with Government). From time to time the Commission staff may issue instructions or guidelines regarding reporting.

5.5.2. Notify and Engage Key Stakeholders. Keeping local government and agency officials as well as other key stakeholders informed of emergencies is critical to their ability to operate and support their missions. It is far more advantageous for these officials and key stakeholders to receive information directly from BVES Leadership in a timely manner rather than via the media.

Utilizing the contact list developed during pre-incident engagement, BVES Leadership should notify local government and agencies and other key stakeholders of emergencies and provide them updates as appropriate. Some of this notification may be achieved by sending to the local "Public Information Officer" developed through MMAA group email notifications and status updates.

## **Bear Valley Electric Service, Inc. Emergency & Disaster Response Plan**

5.5.3. Notify Customers and General Public. The Customer Service Supervisor shall develop pre-planned statements with fill-in-the-blank sections for potential outage and emergency events. These pre-planned statements shall be used as deemed appropriate by the Customer Service Supervisor to update customers and the general public as soon as feasible via the following means:

- News releases (newspaper, online news outlets, radio, etc.)
- Website updates
- Social media updates
- IVR messages
- Two-way text communication
- Email notifications to customers
- Other public and customer engagement media (for example, City of Big Bear Lake's email blast)

Specific guidance on developing press releases and statements and engaging the media is provided in the next section. Customer Service Supervisor shall develop pre-planned statements for IVR and text message use. IVR and text messages should be short – about one sentence – and may refer the customer to additional information sources such as our website or social media. For example, “BVES crews are responding to outages on the North Shore and the estimated time to restore power is 2 pm – additional information is available at [www.bves.com](http://www.bves.com).”

5.5.4. Media Engagement Procedures. By proactively engaging the media, BVES is able to reach a wide audience in its service area and establish the opportunity to convey the correct narrative and information to the general public. When engaging the media, it should be understood that in general the media are:

- Professionals at what they do – they are normally just doing their job and are experts at interviews.
- Often, they are deadline driven.

Therefore, when working with the media as a BVES spokesperson, staff must be prepared and properly authorized. Any employee speaking to media whether “on the record” or “off the record” automatically becomes a spokesperson for the BVES willingly or unwillingly.

5.5.4.1. Authorized Media Engagement. The Public Information Group is the authorized group to interact with the media and they shall lead all media engagement efforts. They shall work closely with the Operations Group to ensure they have accurate information, develop press releases with the assistance of the BVES's public relations firm, coordinate releases with other organizations such as local government and agencies, and clear press releases with the President prior to releasing them.

It should be recognized that media representatives could reach out to BVES employees at any time; especially, BVES employees (and their contractors) out in the field. Therefore, Managers and Supervisors must ensure their employees are periodically updated with the status of the

## **Bear Valley Electric Service, Inc. Emergency & Disaster Response Plan**

emergency response and train their employees to respond to direct media reporter inquiries as follows:

- At all times act politely and professionally.
- Write down the reporter's name, organization, and phone number.
- Write down any questions the reporter may have.
- It is acceptable for field crews and staff to respond to questions directly pertaining to the conditions or work being performed by them. For example, it is acceptable for field crews to describe how the weather is impacting their immediate restoration work out in the field.
- However, any larger questions, such as estimated time of restoration, other reported outages, availability of resources (manpower and materials), restoration strategy should be written down and the reporter informed that BVES shall get back to them.
- In all cases, the employee approached by the media must inform their Supervisor or Manager as soon as possible of the inquiry and pass along the contact information, questions asked, and any answers provided. This information must be immediately conveyed to the Public Information Group.
- The Public Information Group should follow up as soon as feasible with the reporter even if the employee responded to the questions.

5.5.4.2. *Press Release Content.* The Public Information Group shall develop press releases from pre-planned press release templates as feasible. These are especially useful in the initial stages of an emergency where information is still sparse. They allow for rapid dissemination of initial information of the emergency scope. As the Operations Group obtains more accurate information from Field Crews, the press releases should be updated accordingly. Additionally, they shall consult with BVES's public relations contractor to develop press releases and an engagement strategy tailored to the specific emergency.

Press releases should make the best attempt at addressing the "who, where, why, what, when, and how" to the emergency event. However, do not delay issuing a press release to obtain all of this information. The information can be relayed in press release updates. Ideally, in a large outage, the following information should be released as it is known:

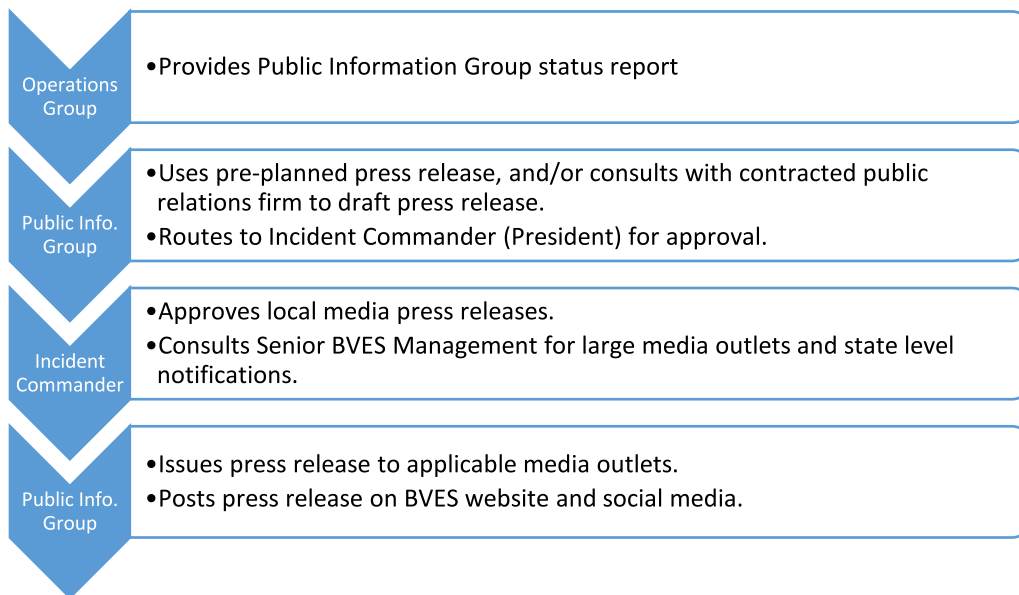
- **(Who/where)** Location of the outage and who is affected – use geographic locations such as areas or streets (for example, "Moonridge Area", "from the Village to the Dam on the South shore of the lake", "from Pine Knot Ave to Paine Rd on the South Shore of Big Bear Lake", etc.). Avoid using circuit and/or substation names to describe the location, since these names have little meaning to the public.
- **(When)** Time outage started and estimated time of restoration (ETR).
- **(Who)** Number of customers without power. Provide the best estimate available and update as it is changed.
- **(Why/what)** Cause of the outage and location of damage/problem. Use simple descriptions that a non-utility audience would understand (for example, "car hit a ground mounted transformer causing sufficient damage to take it out of service," "an 80-foot tree fell from across the street on Pine Knot Ave onto a major overhead power line," "loss of power supply from Goldhill due to fault on Southern California Edison equipment," etc.).

## Bear Valley Electric Service, Inc. Emergency & Disaster Response Plan

- **(When)** Whether or not Field Crews are conducting repairs to restore power. If crews are not on site, provide an estimated time of arrival if available.
- **(How)** Actions being taken to restore power (starting BVPP, conducting field switching to alternate sources of power, conducting repairs to damaged equipment, etc.).

Pictures of the damage and field crews conducting repairs are always very useful.

5.5.4.3. Press Release Protocols. The Public Information Group under the leadership of Customer Program Specialist shall be responsible for drafting and issuing press releases from the BVES to the media. Press releases shall be drafted, approved, and released per the protocol shown in Figure 5-1, Press Release Protocol.



**Figure 5-1: Press Release Protocol**

5.5.5. Post Emergency Event Close-out Statement. Once the Emergency Response is determined to be no longer necessary, Customer Service Supervisor shall prepare a summary press release and statement providing customers a brief summary of the emergency event and provide any post incident support instructions such as:

- Information on whom to contact at BVES to reconnect service for customers whose weather head or other equipment was damaged preventing immediate service restoration.
- Information on obtaining post incident customer support per Section 6 of this plan.

5.6. **Reports to the Commission.** The Utility Manager shall ensure required reports to the Commission and its Divisions are made in a timely and complete manner. These reports include:

- Notify California Public Utilities Commission (CPUC) and Warning Center at the Office of Emergency Services San Bernardino within one hour of an outage if the outage meets the major outage criteria of GO-166.

**Bear Valley Electric Service, Inc.  
Emergency & Disaster Response Plan**

- Notify President Safety Enforcement Division (SED), CPUC within twelve hours of the power being shut-off per ESRB-8.
- Provide a report (written) to President of SED no later than 10 business days after the shut-off event ends per ESRB-8.

## **Bear Valley Electric Service, Inc. Emergency & Disaster Response Plan**

6. **Customer Support in Emergencies.** In the event the Governor of California declares a state of emergency because a disaster has either resulted in the loss or disruption of the delivery or receipt of utility service and/or resulted in the degradation of the quality of utility service, BVES shall implement certain customer service actions as described below. This section provides an overview of the protocols for compliance with requirements adopted by the CPUC regarding activities to support customers. The protocols span customer billing, support for low income, life support, Access and Functional Needs (AFN) customers, and other forms of customer support.

6.1. **Support for Low Income, Life Support and AFN customers.** The Customer Care Team shall freeze low income, life support, and AFN customer accounts and stop all California Alternative Rates for Energy (CARE) High-Usage tracking. The Supervisor shall work with implementation contractors and emergency assistance programs to update affected customers on eligibility requirements and enroll them in assistance programs.

6.2. **Billing Adjustments.** The Customer Care Team shall freeze accounts and stop billing during the disaster event to ensure bills are not estimated or generated for affected customers. Billing shall resume once the case is closed by the Customer Care & Billing (CC&B) technical team, upon notice from the Supervisor.

6.3. **Deposit Waivers.** The Customer Care Team shall add a designated customer contact for all affected customers. The contact shall reside within CC&B for up to one year from the date the emergency ends. This shall allow BVES to easily track the customer's account, so when service is re-established, the utility shall know to waive any associated fees and to expedite customer re-connection.

6.4. **Extended Payment Plans.** The Customer Care Team shall freeze all payments on affected customers' account to avoid affecting their credit. All affected customers shall be notified that an extended payment plan option is available for any past due payments.

6.5. **Suspension of Disconnection and Nonpayment Fees.** The Customer Care Team shall freeze affected customer accounts, so disconnections and nonpayment fees are not generated during the disaster event. Once the emergency ends, the Supervisor and/or Specialist shall contact the CC&B Team to "close" all affected customer cases. This shall automatically transition the customer's account back to the normal state. BVES shall simultaneously begin assisting with service restoration and deposit waivers.

6.6. **Repair Processing and Time.** During emergencies, BVES shall set up specialized repair teams to expedite repair processing. If additional support is needed, BVES shall leverage mutual aid programs with other emergency response resources and shall work with electrical contractors to ensure timely service restoration. Exact timing shall be dependent on the nature of the situation.

6.7. **Access to Utility Representatives.** The BVES Engineering Technician shall arrange for connections and facilitate expedited services. Leveraging its IVR system, BVES shall be able to handle thousands of phone calls simultaneously and divert customers to the appropriate utility representative.



**Bear Valley Electric Service, Inc.  
Emergency & Disaster Response Plan**

6.8. **Access to Outage Reporting and Emergency Communications.** During emergencies, BVES shall invoke its emergency communications plan per the EDRP to attempt to reach as many customers as feasible with outage, restoration and recovery information via multilayered communications channels and multiple languages per Section 5.4 of the EDRP.