

Schistosomiasis in the People's Republic of China – down but not out

Research Article

Cite this article: Gordon CA *et al* (2022). Schistosomiasis in the People's Republic of China – down but not out. *Parasitology* **149**, 218–233. <https://doi.org/10.1017/S0031182021001724>

Received: 15 July 2021
Revised: 30 September 2021
Accepted: 1 October 2021
First published online: 3 November 2021

Key words:

Chinese National Schistosomiasis Control Programme; digital droplet PCR (ddPCR); Dongting lake; Hunan province; Jiangxi province; Kato-Katz; LAMP; People's Republic of China; Poyang lake; Real-time PCR (qPCR); *Schistosoma japonicum*; Schistosomiasis

Author for correspondence:

Catherine A. Gordon, Donald P. McManus,
E-mail: Catherine.Gordon@qimrberghofer.edu.au,
Don.McManus@qimrberghofer.edu.au

Catherine A. Gordon¹ , Gail M. Williams², Darren J. Gray³, Archie C. A. Clements⁴, Xiao-Nong Zhou⁵, Yuesheng Li^{1,6}, Jürg Utzinger^{7,8}, Johanna Kurscheid^{3,7,8}, Simon Forsyth² , Kefyalew Addis Alene⁴, Jie Zhou⁶, Zhaojun Li⁹, Guangpin Li⁶, Dandan Lin⁹, Zhihong Lou⁶, Shengming Li⁶, Jun Ge⁹, Jing Xu⁵, Xinling Yu⁶, Fei Hu⁹, Shuying Xie⁹, Jie Chen¹⁰, Tao Shi¹⁰, Chong Li¹⁰, Huajun Zheng¹⁰ and Donald P. McManus¹ 

¹Department of Immunology, Molecular Parasitology Laboratory, QIMR Berghofer Medical Research Institute, Brisbane, Australia; ²School of Population Health, Discipline of Epidemiology and Biostatistics, University of Queensland, Brisbane, Australia; ³Department of Global Health, Research School of Population Health, Australian National University, Canberra, Australia; ⁴Faculty of Health Sciences, Curtin University, Perth, Australia; ⁵National Institute of Parasitic Diseases, Shanghai, People's Republic of China; ⁶Hunan Institute of Schistosomiasis Control, Yueyang, Hunan, People's Republic of China; ⁷Swiss Tropical and Public Health Institute, Basel, Switzerland; ⁸University of Basel, Basel, Switzerland; ⁹Jiangxi Institute of Parasitic Diseases, Jiangxi, People's Republic of China and ¹⁰Chinese National Human Genome Center, Shanghai, People's Republic of China

Abstract

Schistosomiasis has been subjected to extensive control efforts in the People's Republic of China (China) which aims to eliminate the disease by 2030. We describe baseline results of a longitudinal cohort study undertaken in the Dongting and Poyang lakes areas of central China designed to determine the prevalence of *Schistosoma japonicum* in humans, animals (goats and bovines) and *Oncomelania* snails utilizing molecular diagnostics procedures. Data from the Chinese National Schistosomiasis Control Programme (CNSCP) were compared with the molecular results obtained.

Sixteen villages from Hunan and Jiangxi provinces were surveyed; animals were only found in Hunan. The prevalence of schistosomiasis in humans was 1.8% in Jiangxi and 8.0% in Hunan determined by real-time polymerase chain reaction (PCR), while 18.3% of animals were positive by digital droplet PCR. The CNSCP data indicated that all villages harboured *S. japonicum*-infected individuals, detected serologically by indirect haemagglutination assay (IHA), but very few, if any, of these were subsequently positive by Kato-Katz (KK).

Based on the outcome of the IHA and KK results, the CNSCP incorporates targeted human praziquantel chemotherapy but this approach can miss some infections as evidenced by the results reported here. Sensitive molecular diagnostics can play a key role in the elimination of schistosomiasis in China and inform control measures allowing for a more systematic approach to treatment.

Introduction

Schistosomiasis in the People's Republic of China (China), caused exclusively by infection with the species *Schistosoma japonicum*, is a zoonotic parasitic disease that goes back to antiquity with eggs identified in mummies from the Han dynasty (206 BC) (McManus *et al.*, 2010; 2018; Yeh and Mitchell, 2016). Historically, schistosomiasis ranks as the most important helminth infection in China, with the main hotspots being the river bank areas of the five provinces along the middle and lower reaches of the Yangtze River (Hunan, Hubei, Jiangxi, Anhui and Jiangsu) and the mountainous areas of Sichuan and Yunnan (McManus *et al.*, 2010; Li *et al.*, 2020). The major endemic foci are found in the marshlands of the Dongting and Poyang lakes, China's two largest inland lakes (Fig. 1). China is a global leader in schistosomiasis control with its strong political commitment and concerted long-term control efforts involving a variety of approaches developed and rigorously implemented over the past several decades. Control measures include snail control, removal of bovines from endemic areas, chemotherapy, improved sanitation, access to safe water and health education (Wang *et al.*, 2009; Zhou *et al.*, 2011). In 2010, Chinese Vice-Premier Li Keqiang first championed the goal of upscaling this integrated strategy of blocking infection transmission to achieve schistosomiasis elimination (defined as reducing the locally acquired infection rate to zero) by 2020 (Utzinger *et al.*, 2015). In 2018, of 28 456 villages in 450 endemic counties (covering 260 million people, of which over 70 million were at risk of infection), 58.4% reached the criterion of elimination, 27.6% of transmission interruption and 14.0% of transmission control, due to implementation of these measures in the China National Schistosomiasis Control Programme (CNSCP) (Zhang *et al.*, 2019). The elimination target was revised upwards from 2020 to 2025 (Zhou *et al.*, 2004; 2008a; Gray *et al.*, 2008), and then 2030, as specified in the Healthy China 2030 strategic plan issued by the Chinese government (China, 2016; Xu *et al.*, 2020).



Fig. 1. The location of Hunan (1) and Jiangxi (2) provinces with the eight study villages in each province identified. Yueyang and Nanchang (provincial capital) cities, where the Hunan and Jiangxi Institutes of Parasitic Diseases are respectively located are also shown.

As schistosomiasis transmission decreases in China, accurate diagnosis will be essential for case detection and for determining true infection rates. The microscopy-based Kato-Katz (KK) thick smear technique (Katz *et al.*, 1972) recommended by the World Health Organization (WHO) to assess schistosome prevalence and intensity in humans is the standard tool used for stool examinations in the CNSCP (Chen *et al.*, 2012; 2021). However, it is laborious and its sensitivity is compromised in low-intensity infections and in areas of low prevalence (Weerakoon *et al.*, 2015). Similarly, conventional microscopy or the use of sentinel mice (Yang *et al.*, 2013) are the current mainstays for detecting infected snails and have similar limitations. Furthermore, the numbers of pre-patent infected snails are likely to exceed those with mature cercariae and sporocysts, and germ balls are easily missed (Qin *et al.*, 2018). Innovative DNA-based assays [e.g. real-time polymerase chain reaction (qPCR) and, loop-mediated isothermal amplification (LAMP)] provide a far more sensitive and precise approach for detection of schistosome infections in humans and animals, and in snail intermediate hosts (Weerakoon *et al.*, 2015; Qin *et al.*, 2018). Indeed, without addressing the limitations in the currently used conventional diagnostic procedures and, with the marked ecological and demographic changes that China is facing, exacerbated by the possible repercussions of the COVID-19 pandemic on the CNSCP (Guo *et al.*, 2020), the 2030 schistosomiasis elimination target set by the central government may yet prove challenging.

Here we present the results of the 2016 baseline survey of a longitudinal study on schistosomiasis prevalence in 16 villages in Hunan and Jiangxi provinces. We examined humans, animals and snails for infections using validated and highly sensitive molecular diagnostics procedures (Gordon *et al.*, 2012, 2015a, 2015b; Tong *et al.*, 2015; He *et al.*, 2018), and compared the results of our survey with those from the CNSCP for the same villages.

Materials and methods

Ethics

Informed written consent was received from all individuals enrolled in the study, and from parents/guardians of minors. Ethical approval for human and animal work was provided by the Ethics Committees of QIMR Berghofer Medical Research Institute (Human Research Ethics Committee reference number P524; Animal Ethics Committee reference number A1003-601),

Hunan Institute of Parasitic Diseases (HIPD), Jiangxi Institute of Parasitic Diseases (JIPD) and the National Institute of Parasitic Diseases (NIPD), Shanghai. Written informed consent was received from all individuals enrolled in the study, and from parents/guardians of minors.

All human subjects found to be positive for *S. japonicum* during the course of the study were referred to the local schistosomiasis control station for treatment with praziquantel (PZQ) at the WHO recommended dose of 40 mg kg⁻¹. Written informed consent was received from all animal owners in the study sites, and the study was performed in accordance with the recommendations of the 2013 Australian code of practice for the care and use of animals for scientific purposes.

Study area

We identified 16 villages participating in the CNSCP around the Dongting and Poyang lakes. The villages included eight in each of Hunan and Jiangxi provinces that were selected based on published prevalence data (Gray *et al.*, 2014; Dang *et al.*, 2017; 2021). Specifically, villages were selected using the following process: a sampling frame of 24 villages in schistosomiasis-endemic areas in each of Jiangxi and Hunan provinces was constructed. These were stratified according to human prevalence using cut-off points of 1 and 1.5% and placed in random order within the province and stratum. The cut-off of 1% was chosen as the tipping point for elimination, and 1.5% came from the mean prevalence of the villages as determined by the KK procedure. Cut-offs were initially selected based on power calculations for the study where a sample size of 3600 would provide a power of 79.8 and 95% assuming the KK would diagnose 1 and 1.5% of positively infected individuals, respectively.

Accordingly, eight villages were selected in each province in consecutive order on the randomized list. The villages selected in Hunan were: Changjiang, Dongtinghong, Ganzhou, Longwang, Xiangjiang, Xincheng, Xinggong, and Zhangshu; while in Jiangxi the selected villages were Biaoan, Caohui, Dingshan, Dongfang, Fuqian, Huanggin, Huangjia, and Xinhua (Fig. 1).

Study design and procedures

The baseline of a longitudinal cohort study was carried out across the 16 villages identified in Hunan and Jiangxi provinces. A demographics questionnaire, including details of medical history

and water contact (Supplementary form 1; individual survey), was administered to all village residents and used to select individual cohort participants who had to meet the following criteria: (i) age 5–70 years; (ii) resident in the village for >12 months; (iii) not intending to migrate in the next 5 years; (iv) continuously resident in the village over the study period; (v) indicated having had water contact; and (vi) provided written informed consent (minors had the written informed consent of their parent or guardian). Using these selection criteria, a fixed cohort ($N = 500$ – 600) of villagers (with equal numbers of males and females) was recruited for the baseline (2016) and follow-up (2017–2019) surveys from each village. Approximately 10–20% loss to follow-up was expected based on our previous experiences in China. The primary end points of the study were human infection rates with secondary end points including animal infection rates, snail prevalence and density of infected snails.

Cohort members were each provided with a stool collection container labelled with the individual participant identification (PID) number. Subjects were directed to deposit a roughly chicken egg-sized amount of stool into the container. Containers were collected the following day and processed for storage and transportation (see the section on ‘Stool sample collection and storage’). A household questionnaire (Supplementary form 2) was administered to the households of all cohort participants, with one senior adult member from each household providing responses.

An animal survey was performed at the same time as the human stool collection. Households that indicated ownership of bovines or goats were provided with a stool container labelled with the animal's identification (AID) number and directed to place a minimum chicken egg-sized stool sample into the container. The stool samples were returned to central collection points to be collected by study personnel. Animal age and sex were captured in the household questionnaire (Supplementary form 2).

Stool sample collection and storage

On the day of stool collection, approximately ~1 g of human faeces was lightly homogenized using an applicator stick, placed into a labelled 15 mL tube and 80% (v/v) ethanol was added to completely cover the sample. Tubes were then stored at 4°C until transported to the National Institute of Parasitic Diseases (NIPD), Chinese Center for Disease Control and Prevention, Shanghai for DNA extraction. Bovine (5–10 g) and goat (approximately 2 g) stool samples were lightly homogenized with an applicator stick, placed into a labelled 50 mL tube, completely covered with 80% (v/v) ethanol, stored at 4°C, and transported to QIMR Berghofer (Brisbane, Australia) for DNA extraction and analysis.

Snail survey and collection

Snail hot spots were identified in the study area and a snail survey was performed in April–May 2015. GPS coordinates and photos of the areas where snails were collected were taken to record hot spot locations. Snail sampling was conducted using the standard Chinese random quadrant method (Ministry of Health Health, 2000). In a snail area, the potential hotspot location was divided into five sections. Sampling frames (0.11 m^2) were labelled with a site identification code (SID), and the frame ID. Numbered frames were placed at 2 m intervals along the width and length of the potential snail hot spot location. All snails within each frame were collected and placed into a bag labelled with the SID, frame ID and the date of snail sampling. Snails were counted as they were placed into the bag. GPS coordinates were taken for each snail sampling location. Snails were transferred to HIPD in Hunan province and JIPD in Jiangxi province for microscopic examination to identify

schistosome-positive snails by observing cercarial emergence, which were then pooled for LAMP. Snails were either processed immediately for DNA extraction (see below), or stored at -20°C until they could be processed.

Molecular detection of *S. japonicum* in human and animal stool samples

DNA extraction

Total DNA was extracted from human stool samples at NIPD in Shanghai, using QIAamp DNA Mini Kits (Qiagen; Hilden, Germany) following the manufacturer's protocol with some minor modifications. Two hundred milligrams of stool were placed into a 2 mL Eppendorf tube with 1 mL of MilliQ water, the sample was vortexed thoroughly and then centrifuged in a microfuge at maximum speed for 1 min to wash any residual ethanol out of the sample. The supernatant was discarded and the manufacturer's protocol was followed for the remaining steps.

Total DNA was extracted from animal stool samples at QIMR Berghofer, using a Maxwell 16 LEV Plant DNA kit (Promega Corporation; Alexandria, Australia) following the manufacturer's protocol with some minor modifications before adding the sample to the Maxwell cartridges. Two hundred milligrams of stool were placed into a 2 mL screw top tube with 1 mL of lysis buffer and 0.5 g of 0.5 mm zirconia/silica beads (Daintree Scientific; St Helens, Australia). The sample was homogenized in a Precelly's tissue homogenizer for 45 s at 2500 rpm. The sample was then centrifuged for 3 min at 800 g. After centrifugation 200 μL of the supernatant was added to the first well of the Maxwell 16 cartridge along with 200 μL of MilliQ water. Elution tubes contained 50 μL of elution buffer. The protocol for the Plant DNA extraction programme was selected and run on the Maxwell 16 robot. After the programme was completed any magnetic beads transferred into the elution tube were removed using a magnetic rack, and the eluted DNA was transferred to a new tube.

The recovered DNAs from the human and animal stool samples were checked for quantity and quality using a NanoDrop™ 2000 spectrophotometer and aliquots of diluted DNA (1:5) were used as the template for the qPCR and ddPCR assays targeting the mitochondrial subunit I of the NADH dehydrogenase (*nad1*) gene of *S. japonicum* (Lier *et al.*, 2006; Gordon *et al.*, 2012; 2015a, 2015b).

Real-time PCR (qPCR)

The total reaction volume of 17 μL contained 10 μL SYBR Green (Invitrogen), 200 nM of each primer, 0.1 $\mu\text{g} \mu\text{L}^{-1}$ of BSA, 3 μL of H_2O and 2 μL of template DNA (50 ng μL^{-1}). The PCR was performed as previously described (Lier *et al.*, 2006; Gordon *et al.*, 2012, 2015a, 2015b). Results were quantified as eggs per gram of faeces (EPG) in the range 1–100 EPG using qPCR cycle threshold (Ct) scores based on egg seeding experiments as described previously (Gordon *et al.*, 2012, 2015a, 2015b). The EPG as determined by qPCR is referred to as qEPG from here on.

The qPCR assays on human stool samples were performed at the Chinese National Human Genome Center (CNHGC) in Shanghai, on a 7300 Plus real-time PCR system (Applied Biosystems; California, USA) thermocycler, while the qPCR assays on animal stools were performed at QIMR Berghofer, on a Corbett Rotorgene 6000 (Qiagen) thermocycler.

Digital droplet PCR (ddPCR)

The ddPCR primers were the same as used for the qPCR (Lier *et al.*, 2006; Gordon *et al.*, 2012, 2015a, 2015b; Weerakoon *et al.*, 2016, 2017a, 2017b). ddPCR assays were performed as previously described (Weerakoon *et al.*, 2017b) Negative (no DNA template) controls were used in all assays, as were positive controls containing

S. japonicum egg DNA. Following PCR amplification, the 96-Well twin.tec™ PCR plate (Eppendorf; Hamburg, Germany) was placed in a QX200 Droplet Reader (Bio-Rad) for droplet reading and analysis. Fluorescence intensity of the no DNA template negative control was used to define the threshold for discrimination between droplets that contained target (positives) and those that did not (negatives), determined using QuantaSoft software version-1.3.2.0 (Bio-Rad) (Weerakoon *et al.*, 2016, 2017a, 2017b). Total droplet numbers were used to assess the success of a sample in a run. Samples that had less than 10,000 total droplets were repeated, as were any that evidenced droplet shearing when viewing the 1D amplitude plots on the QuantaSoft software. The ddPCR analysis was performed at QIMR Berghofer.

Target gene copy number index (CNI)

The target gene copy number index (CNI) is defined as the number of target gene copies per 100 ng of template DNA (Weerakoon *et al.*, 2017b). Target gene copy number per one mL of a 20 µL reaction mix was obtained using the QuantaSoft software (Weerakoon *et al.*, 2017b). This was converted to CNI using the following formula

$$\text{CNI} = \frac{\text{Target gene copies per } \mu\text{L} \times 20}{\text{Total ng of template DNA in the } 25 \mu\text{L reaction mix}} \times 100$$

The higher the CNI, the higher the intensity of infection.

Molecular identification of *S. japonicum* in *Oncomelania hupensis* snails

DNA extraction

Snails were pooled by the collection site with a maximum of 50 snails per pool with additional pools made up of any remaining snails. Snails were crushed between two thick glass slides and large shell debris was removed. The snail soft tissues were pooled in clean 2.0 mL tubes (not exceeding 50 snail bodies in each), DNA lysis buffer (400–1000 µL) (Qiagen; Valencia, CA, USA) was added to each tube and the tissues were lightly homogenized. Then, 20–50 µL of Proteinase K (Qiagen) was added and the tubes were maintained for 2–3 h at 56°C in a water bath, after which the snail homogenate supernatants were passed through a DNA binding column (Qiagen). The DNA binding column was then washed with washing buffer (Qiagen) and genomic DNA was recovered from the column by elution with nuclease-free water. The recovered DNA was checked for quantity and quality using a NanoDrop™ 2000 spectrophotometer (ThermoFisher Scientific) and subjected to testing by a field-verified LAMP assay targeting the 28S ribosomal *S. japonicum* gene (SJ28S) (GenBank accession no. Z46504) (Kumagai *et al.*, 2010; Qin *et al.*, 2018).

LAMP assay

The SJ28S LAMP assay master mix (total volume 23 µL) was prepared containing 7.5 µL of MilliQ water, 12.5 µL of 2 × reaction buffer, 1 µL of primer mixture (Kumagai *et al.*, 2010) [(F3 (GCTTTGTCCTTCGGGCATTA), B3 (GGTTTCGTAACGCCAATGA), FIP (ACGCAACTGCCAACGTGACATACTGGTCGGCTTGTTACTAGC), BIP (TGGTAGACGATCCACCTGACCCCTCGCGCACATGTTAACTC)], 1 µL of *Bst* enzyme (a *Bacillus stearothermophilus* DNA polymerase homologue used for DNA strand displacement), and 1 µL of calcein. To this 2 µL of the extracted pooled snail DNA was added and mixed well. Negative controls contained nuclease-free water instead of DNA, and positive controls contained *S. japonicum* genomic DNA isolated from adult worms. Reaction tubes were incubated at 65°C for 60–90 min followed by 85°C for 5 min to stop the

reaction. The tubes were observed directly by the unaided eye to detect a colour change from brown (negative) to green (positive).

Wealth index

Poor health may be a consequence of poverty due to an inability to afford adequate nutrition, housing, education, and healthcare. Poverty as an indicator for schistosome infection is likely to be due to inadequate hygiene infrastructure such as flushable toilets and access to clean, safe water. A household wealth index was calculated and included in the analysis as an independent variable to adjust for potential socioeconomic confounders in the longitudinal cohort study. The household survey (Supplementary form 2) included a number of household characteristics and asset variables that can be used to estimate the household wealth index using a principle component analysis (Filmer and Pritchett, 2001; Vyas and Kumaranayake, 2006; Balen *et al.*, 2010). The household characteristics used to estimate the wealth index were non-productive assets (motorbike, car, tractor, fridge, washing machine, rice cooker, microwave, TV, telephone and computer) and productive assets (land ownership, number of cattle, number of buffalo and number of goats); household utilities (type of source of drinking water, access to a sanitation facility, type of toilet and access to the internet) were also included in the wealth index estimation. Household wealth inequality is measured by dividing the wealth index into quintiles, with the lowest quintile representing the poorest 20% and the highest quintile representing the wealthiest 20% of households in the study area.

Data management

All data entry was completed using the REDCap web application (Harris *et al.*, 2009, 2019). All data were double entered by different study personnel. Data error checking was performed and differences between the two datasets were compared; any differences between the records were corrected based on the source document. Regular quality checks were made to find anomalous values which were then rectified. Data were stored centrally on a secured server within the University of Queensland under the auspices of authors GMW and SF. Once data entry and error checking were completed, the data were exported and translated into SAS version 9.4 (SAS Institute; Cary, NC, USA) for data analysis.

Statistical analysis

SAS software was used for most data analysis. Ninety-five per cent confidence intervals (95% CI) were calculated using standard formulae based on the binomial distribution (prevalence) and the lognormal distribution (infection intensity). To account for clustering effects within villages generalized estimating equations (GEE) were used to calculate *P* values with villages as a cluster effect. *P* < 0.05 was considered significant.

A stool sample was considered positive if a positive Ct score was obtained by qPCR (a Ct score equal or greater than 35 was considered negative; less than 34.99 was considered positive), or positive droplets over the threshold fluorescence for the ddPCR (Weerakoon *et al.*, 2017b).

Egg counts from the qPCR assays were transformed to eggs per gram of faeces (qEPG) and geometric EPG (GMEPG) in infected stool samples calculated using the log-transformed egg counts. Confidence limits were calculated using standard formulae based on the binomial distribution (prevalence) and the lognormal distribution (infection intensity). *P* values for occupation prevalence were based on the 'occupation 2' variable where occupation groups were combined as there were too many variables with very low numbers in each for the calculation.

JMP (version 16.0.0) was used for a generalized regression using a beta-binomial maximum likelihood model to examine the relationship between the presence of schistosome-positive animals in a village and human prevalence.

Chinese National Schistosomiasis Control Programme (CNSCP) protocols

The CNSCP data were sought for 2015 and 2016 for all study villages to directly compare with the survey results described here. Under the CNSCP, cluster-randomized sampling of households from villages in endemic areas is performed to select households for inclusion in mass drug administration (MDA) and the monitoring of villagers for *S. japonicum* infections; blood samples (200 µL) are taken from individuals in the selected households and then tested serologically using the indirect haemagglutination assay (IHA) (Glinz et al., 2010). Those who are IHA-positive are then asked to submit a single stool sample for KK examination (three slides; 41.7 template) (Katz et al., 1972). MDA is also performed in endemic areas based on water contact data. Those who are considered to be at high to moderate risk of schistosomiasis based on water contact are treated with PZQ. MDA on humans is carried out by local health stations with MDA coverage rates of 30–60% of the population. There is no animal treatment as part of the CNSCP.

Snail surveys are also performed as part of the CNSCP by systematic and environmental sampling. Snails are pooled (50 snails per pool), DNA extracted, and LAMP performed to diagnose snails infected with *S. japonicum* (Tong et al., 2015).

Results

A flow diagram of the human and animal study participant recruitment and cohort study sample selection is shown in Fig. 2. In total, 9961 people were initially enrolled into the study at baseline, and 9794 completed the questionnaire and provided a stool sample (167 did not provide a stool sample). From each village, a random selection of study participants was taken and DNA was extracted from 5077 stool samples and qPCR was successfully performed on 4414. Of those with complete qPCR data, 490 were unable to be matched in the database and were excluded from the analysis. The total number of people from whom data were analysed in the study at baseline was 3924.

A total of 120 animal (55 cattle, 30 buffalo, 35 goats) stool samples were analysed by qPCR and ddPCR for the presence of *S. japonicum*. Age and sex of bovines were ascertained by use of the household questionnaire given to the animal owners prior to faecal collections (Fig. 2). Animals surveyed in this study came from three villages in Hunan province, Longwang, Ganzhou, and Xinggang. All other villages (no animals were present in the selected Jiangxi villages) had no bovines or goats present at the time of the survey.

Study demographics

Of 3924 participants who had completed questionnaires and matched qPCR data, 51.5% of subjects were from Jiangxi, and 52.2% were male (Table 1, Supplementary Table 1). Ages ranged from 4 to 79 years, with a median age of 48 years.

Human *S. japonicum* prevalence

Hunan and Jiangxi cohorts combined

The total combined baseline prevalence in Hunan and Jiangxi provinces for *S. japonicum*, determined by qPCR was 4.8% (95% CI 4.2–5.5%); Hunan had a significantly ($P < 0.0001$) higher

prevalence (8.0%; 95% CI 6.8–9.3%) than Jiangxi (1.8%; 95% CI 1.2–2.4%) (Table 1, Supplementary Table 1).

The village with the highest human prevalence in Jiangxi province was Biaoen (3.4%; 95% CI 1.33–5.5%), with the lowest recorded prevalence being Caohui (1.2%; 95% CI 0.0–2.6%); Dingshan recorded zero positives (Table 1, Fig. 3). There were no significant differences in prevalence between villages from Jiangxi where *S. japonicum* infections were recorded (Supplementary Table 2).

In Hunan province, all villages recorded positively infected individuals; the highest prevalence occurred in Longwang (20.2%; 95% CI 14.1–26.4%) and Xiangjiang (18.6%; 95% CI 12.4–24.7%), with Xinggang (2.2%; 95% CI 0.5–4.0%) and Changjiang (2.6%; 95% CI 0.7–4.5%) having the lowest (Table 1). Longwang and Xiangjiang had a significantly higher prevalence than Zhangshu ($P = 0.0004$; $P = 0.0019$), Changjiang ($P < 0.0001$; $P < 0.0001$), Dongtinghong ($P < 0.0001$; $P < 0.0001$) and Xinggang ($P < 0.0001$; $P < 0.0001$); Xincheng had a significantly higher prevalence than Dongtinghong ($P = 0.0008$) and Xinggang ($P = 0.0008$) and Zhangshu had a significantly higher prevalence than Dongtinghong ($P = 0.0327$) and Xinggang ($P = 0.0039$) (Supplementary Table 2).

Approximately half of the study participants in both provinces were aged between 40 and 60 years (49.6%) and the highest number of positive infections ($n = 97$; 4.9%; 95% CI 4.0–6.0%) were recorded in this age group (Table 1). There were no significant differences in prevalence between any of the age groups or their education level, even when those below 20 years of age and those above 20 years of age were considered separately (Supplementary Table 2). The majority of village participants in the study were farmers and/or fishermen (85.6%), and these contributed the highest number, albeit not significantly, of positive cases (5.1%; 95% CI 4.4–5.9%), although the highest prevalence was in businessmen/teachers (5.4%; 95% CI 0.0–13.1); however, this was the smallest group by occupation ($n = 37$). (Supplementary Tables 1 and 2).

Most participants (98.8%) used either home or public latrines as their primary mode of defecation, although 5.5% admitted to defecating in the marshlands or lake as their secondary mode of defecation; of these only two individuals tested positive for *S. japonicum*. There was a high number (over 30% being farmers and/or fishermen) who provided no responses for secondary defecation locations. The majority of people did not report diarrhoea (91.3%), weakness (90.1%) or fever (95.1%) in the 2 weeks prior to commencement of the survey. Of those that did record these symptoms, the highest prevalence of *S. japonicum* was in those who reported more than 5 episodes in the fortnight; this was significantly higher for diarrhoea and weakness in infected vs uninfected individuals, but not for fever (Supplementary Tables 1 and 2).

Self-reported historical *S. japonicum* infection was high in the combined Hunan and Jiangxi province cohorts, with 68.1% reporting having had a previous infection, of which 5.2% (95% CI 4.4–6.1%) had a current infection determined by the qPCR analysis (Supplementary Table 1). Just over 70% of the study participants had previously received PZQ treatment for schistosomiasis at least once prior to study commencement, and 41.2% had been treated within the previous 2 years (Supplementary Table 1). The majority of those infected had not been treated in the previous 2 years, although this was not significantly associated with *S. japonicum* infection ($P = 0.3745$). Of the infected individuals, 22.7% ($n = 43$) had received no prior treatment for schistosomiasis. Very few cohort subjects reported having previously had advanced (0.7%) or acute (1.7%) schistosomiasis. The largest occupational groups with previous schistosome infection were farmers and/or fishermen (66.4%) with only 19.0% having no prior history of schistosomiasis, although 5.1% (95% CI 4.4–5.8) of individuals in this group were positive for *S. japonicum* (Supplementary Table 1). Very few of the occupational groups had previously been treated more than 20 times for schistosomiasis, but there

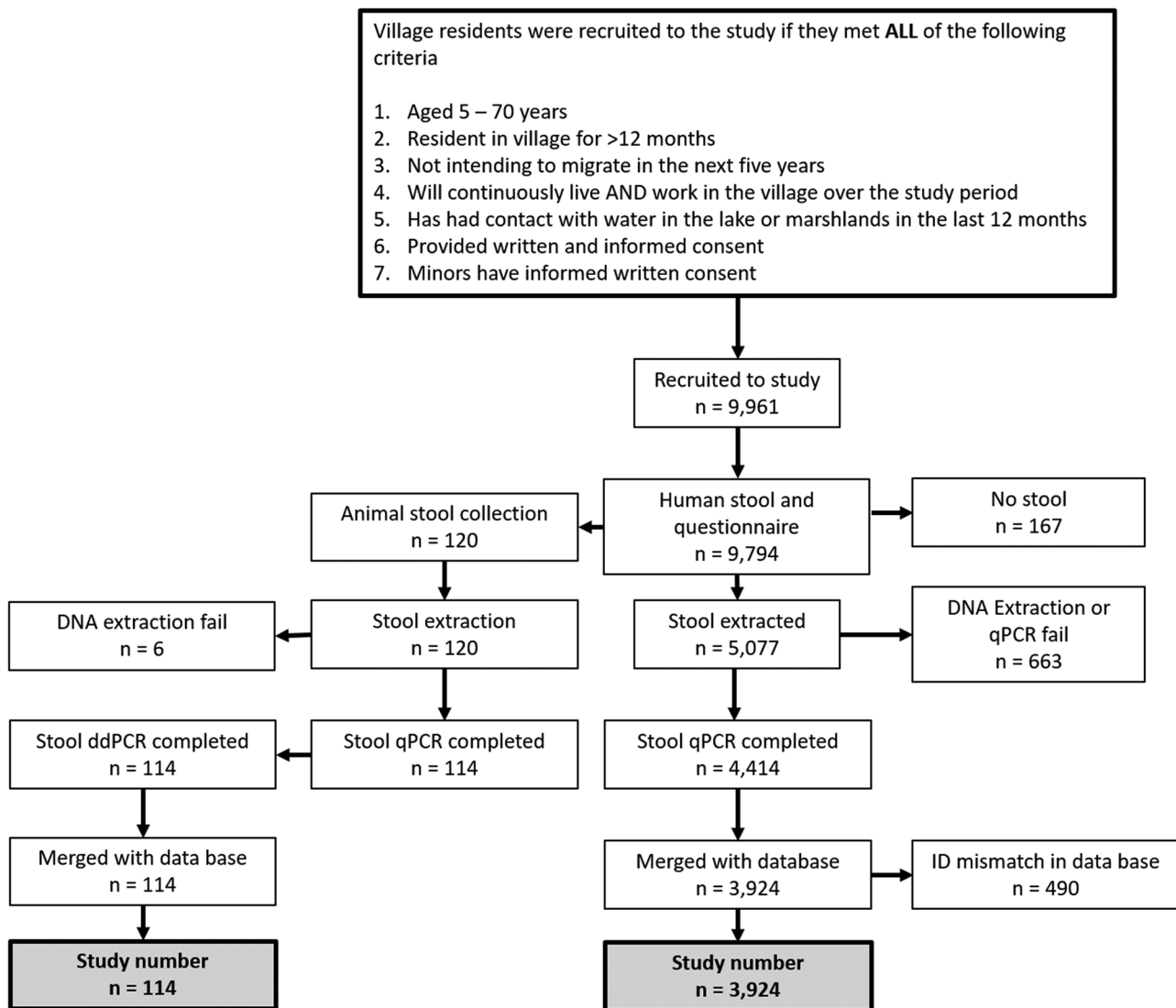


Fig. 2. Flow diagram of human and animal study participant recruitment and study sample selection.

was a clear trend for more schistosomiasis treatments in farmers and/or fishermen (Fig. 3, Supplementary Table 1).

Water contact was more commonly reported in the summer months compared with spring and autumn. The most common water contact activities in all seasons involved fishing, farming, wading in water or washing hands. When combining responses to water contact for all seasons, farming or cutting grass (7.2%; 95% CI 5.7–8.7) and washing clothes (5.9%; 95% CI 3.1–8.7) had the highest cohort subject prevalence for *S. japonicum* (Supplementary Table 1). By occupation, farmers and fishermen had by far the highest recorded water contact (78.9%) in the 12 months prior to the beginning of the study followed by students and pre-school children (6.1%) (Fig. 4, Supplementary Table 1).

Results for Hunan only villages were also considered and the data are presented in Supplementary Tables 3 and 4.

Human *S. japonicum* infection intensity

Hunan and Jiangxi cohorts combined

There were some significant differences in infection intensity (GMEPG) between villages but no significant differences in GMEPGs between age, sex or province (Supplementary Tables 1 and 5). Infection intensity varied widely between villages in Jiangxi province compared with Hunan. The highest GMEPGs

were evident in Xinhua, Jiangxi province (63.8; 95% CI 0.2–29 544) and Zhangshu, Hunan province (39.6; 95% CI 24.4–63.3) (Table 1). Subjects who received primary school ($P=0.0492$) and college-level ($P\leq 0.0001$) education had significantly higher GMEPG than those who were illiterate, and those who had received college-level education had a significantly higher infection intensity than those at the middle school level ($P\leq 0.0001$). Businessmen had the highest GMEPG, although only two individuals in this group were recorded as being infected with *S. japonicum*. There were no significant differences in GMEPG between the other occupational groups (Supplementary Tables 1 and 5).

When water contact for the summer, spring and autumn seasons was combined, swimming or playing was associated with a significantly higher GMEPG compared with other modes of water contact (57.7; $P\leq 0.0001$) (Supplementary Tables 1 and 5).

The results for Hunan only villages were also considered and the data are presented in Supplementary Tables 3 and 4.

S. japonicum prevalence in animals

Animals were recorded as present in only three villages, all in Hunan province (Longwang, Ganzhou, Xinggang) (Table 2). Xinggang had the highest number of animals ($n=71$) with cattle ($n=27$), water buffalo ($n=9$) and goats ($n=35$) present.

Table 1. Prevalence and intensity of infection of *S. japonicum* in humans from 16 sentinel villages in Hunan and Jiangxi provinces determined by qPCR

	Total <i>n</i>	<i>n</i> positive	% positive	95% CI*	% of total <i>n</i>	GMEPG ^a	95% CI
Province							
Jiangxi	2019	36	1.78	1.21–2.36	51.45	23.77	19.69–28.69
Hunan	1905	153	8.03	6.81–9.25	48.55	24.78	16.88–36.39
Combined	3924	189	4.82	4.15–5.49	100.00	23.96	20.26–28.33
Sex							
Male	2050	98	4.78	3.86–5.70	52.24	22.40	17.59–28.54
Female	1874	91	4.86	3.88–5.83	47.76	25.75	20.37–32.56
Jiangxi							
Xinhua	160	3	1.88	0–4.0	4.08	63.82	0.19–20 544
Dingshan	192	0	0.00	Na	4.89	0.00	na
Caohui	245	3	1.22	0–2.61	6.24	15.15	1.29–177.59
Dongfang	302	7	2.32	0.61–4.02	7.70	14.25	7.51–27.03
Huangjia	334	7	2.10	0.55–3.64	8.51	18.63	5.81–59.78
Fuqian	253	4	1.58	0–3.13	6.45	35.61	12.78–99.24
Biaoen	292	10	3.42	1.33–5.52	7.44	34.68	16.29–73.82
Huanggin	241	2	0.83	0–1.98	6.14	21.29	0.01–70 606.67
Hunan							
Longwang	168	34	20.24	14.10–26.38	4.28	18.17	12.59–26.23
Xiangjiang	156	29	18.59	12.42–24.76	3.98	20.84	11.87–36.58
Zhangshu	260	21	8.08	4.74–11.41	6.63	39.57	24.36–64.27
Changjiang	268	7	2.61	0.69–4.53	6.83	21.29	10.81–41.95
Ganzhou	300	24	8.00	4.91–11.09	7.65	14.84	9.49–23.19
Xincheng	247	23	9.31	5.99–13.44	6.29	37.63	25.72–55.04
Dongtinghong	234	8	3.42	1.07–5.76	5.96	29.80	9.01–99.07
Xinggang	272	6	2.21	0.4–3.96	6.93	30.33	7.45–123.51
Age group							
<10	200	9	4.50	1.60–7.40	5.10	22.50	9.51–53.21
10–20	236	7	2.97	0.79–5.15	6.01	35.55	7.34–172.23
20–40	740	40	5.41	3.77–7.04	18.86	20.44	14.81–28.22
40–60	1946	97	4.98	4.02–5.95	49.59	23.65	18.68–29.95
>60	802	36	4.49	3.05–5.92	20.44	27.84	18.25–42.48

*95% CI.
^aGeometric mean eggs per gram of faeces.

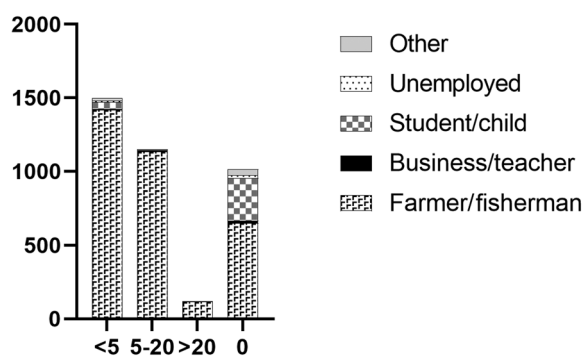


Fig. 3. Total number of individuals with previous praziquantel treatments shown with occupation.

Longwang had goats only (*n* = 17), while Ganzhou had both cattle (*n* = 28) and water buffalo (*n* = 4).

No animals were positive for *S. japonicum* infection by qPCR but 20% (95% CI 11.6–26.6) were positive by ddPCR (Table 2). Animal species data were collected via the household questionnaire but some of the bovine samples were unable to be matched to the questionnaire database and we were, therefore, unable to determine their gender, or if they were cattle or water buffalo. Accordingly, these samples were combined and referred to as bovines, with gender unknown. Where the animal species was known, it was reported accordingly. Ten samples had low quality and/or quantity of DNA and were not analysed by qPCR or ddPCR.

No goats were positive either by qPCR or ddPCR. The majority of animals positive for *S. japonicum* were from Xinggang (18/61) (Table 2). There were no significant differences associated

Prevalence (%) of *S. japonicum* by occupation and water contact utilising the qPCR results

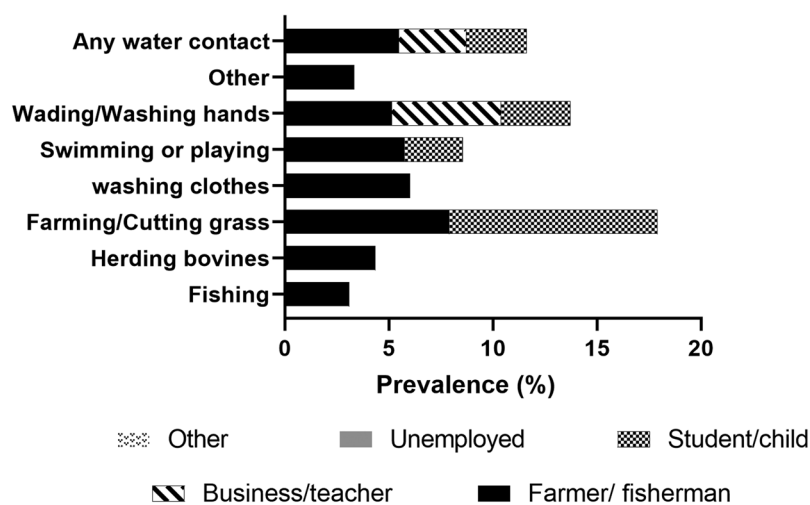


Fig. 4. Prevalence (%) of *S. japonicum* by occupation and water contact utilising the qPCR results.

Table 2. Results of animal ddPCR for *S. japonicum* infection stratified by village, sex, species, and age

	Total <i>n</i>	<i>n</i> positive	% positive	95% CI*	Avg. CNI ^a	95% CI	% of total <i>n</i>
Province							
Hunan	110	22	20.00	11.63–26.55	7.34	5.26–9.43	
Village							
Longwang	32	1	3.13	0–9.50	4.03	0–13.33	0.91
Ganzhou	17	3	17.65	0–37.85	3.66	na	2.73
Xinggang	61	18	29.51	17.77–41.29	8.10	5.75–10.45	16.36
Sex							
Female	52	2	3.85	0–9.25	1.88	0.07–3.68	1.82
Male	19	2	10.53	0–25.72	10.22	0–33.94	1.82
Unknown	39	18	46.15	29.78–62.53	7.63	5.28–9.98	16.36
Species							
Cattle	26	0	0.00	na	na	na	0.00
Water buffalo	22	4	18.18	0.68–35.68	6.05	0–14.09	3.64
Goat	29	0	0.00	na	na	na	0.00
Bovine ^b	33	18	54.55	36.62–72.48	7.63	5.28–9.98	16.36
Age group (years)							
0–2	39	4	10.26	0.29–20.22	6.06	0–14.09	3.64
>2 < 5	30	0	0.00	na	na	na	0.00
>5	2	0	0.00	na	na	na	0.00
Unknown	39	18	46.15	29.78–62.53	7.63	5.28–9.98	16.36

*95% CI.

^aTarget gene copy number index.

^bWater buffalo or cattle, species unknown.

with sex, age group, or village for prevalence or CNI and the average CNI was quite low for all variables (Table 2).

Snail survey and LAMP

In total, eight sites were sampled for oncomelanid snails in Hunan province, one per village, and 22 sites in Jiangxi with multiple sites in some villages, and multiple sub-sites per village (Supplementary Table 7). Multiple sites were sampled in some

villages due to low snail numbers. The environment type (marshland) was the same for all villages. Vegetation type (grass) was the same for all Jiangxi villages but varied between grass, forest and reed type in the Hunan villages (Supplementary Table 7).

In Jiangxi, no snails were found in Biaoen, and only 12 specimens were collected in Caohui. In Hunan, no snails were found in Ganzhou; 115 oncomelanids were collected from Xinggang and 171 from Longwang. Snail numbers in the other villages from both provinces were >300 (Supplementary Table 7). No

S. japonicum positive snails were identified by LAMP (Supplementary Table 7).

Chinese National Schistosomiasis Control Programme (CNSCP) data

All the study villages from Hunan and Jiangxi provinces recorded individuals IHA-positive for *S. japonicum* in the CNSCP in 2016 (Table 3). The highest prevalence was evident in Jiangxi province with four villages recording a prevalence greater than 10%; only one village in Hunan recorded a prevalence exceeding 10%. The lowest prevalence (0.98%) was recorded in Xiangjiang, Hunan province. Prevalence by KK was very low, with only one village in Jiangxi and three villages in Hunan recording positive infections of *S. japonicum* (Table 3). Whereas animals had all been removed from the Jiangxi study villages by 2016, some were still present in Biaoen village, Jiangxi province in 2015, with two animals (species not stated) ($n = 109$) KK-positive for schistosomiasis (Supplementary Table 8).

Wealth Index

Using a binary output of low-high, the prevalence of infection was higher in low wealth index households in the cohort villages than in higher wealth index households (AOR: 1.73; 95% CI 1.19–2.50) (Table 4).

Discussion

Human qPCR and comparison with the CNSCP data

In the CNSCP, subjects in at-risk households in endemic villages are screened by the IHA and those seropositive are requested to provide a faecal sample which is then examined by the KK microscopy technique for the presence of eggs. As shown in Table 3, very few IHA-positive individuals in our study cohort were subsequently shown positive by KK, highlighting the insensitivity of this microscopy-based procedure. The low specificity of the IHA can lead to a false-positive diagnosis as evidenced by the comparison of the qPCR results obtained in the current study with the IHA data reported for the CNSCP.

An earlier study published in 2015 compared results of IHA, KK, and circulating anodic antigen (CAA) on both urine and serum in individuals from Hunan province (van Dam *et al.*, 2015). The IHA in that study was also shown to generate a high number of false positives when using a composite reference standard of the KK and the CAA assays which supports the qPCR results we report here.

We found that the overall human prevalence of schistosomiasis determined by qPCR was significantly higher in Hunan province than in Jiangxi province (Table 1), although this was not reflected in the CNSCP data reported for the same villages in 2016 (Table 3). According to the CNSCP data, Jiangxi had a much higher *S. japonicum* prevalence by IHA than Hunan province, although the values were substantially lower for both provinces where prevalence was determined by the KK procedure; there were only three positives by KK in Jiangxi, and six in Hunan. As indicated, the KK is known to lack sensitivity, particularly in low-intensity infections (Glinz *et al.*, 2010; Habtamu *et al.*, 2011; Gordon *et al.*, 2012, 2015b). Sensitivity of the KK can be increased by examining multiple stools on different days and increasing the numbers of slides observed under the microscope; furthermore, the aggregation of eggs in faeces (resulting in a very uneven distribution), as well as day to day variation in egg output, severely impacts on the results of the KK, particularly if only a single stool sample is examined (Barreto *et al.*, 1990; de Vlas

et al., 1992, 1997; Engels *et al.*, 1996a, 1996b; Utzinger *et al.*, 2001; Berhe *et al.*, 2004; Yu *et al.*, 2007). Previous reports comparing the IHA and KK procedures in China found the IHA to have a high level of sensitivity but poor specificity (Yu *et al.*, 2007; Zhou *et al.*, 2008b). Indeed, circulating anti-schistosome antibodies have been shown to drop but they can persist for months to years after successful treatment with PZQ and parasite clearance, resulting in false positives during serology (Feldmeier *et al.*, 1986). The higher prevalence observed in Jiangxi province by the CNSCP using the IHA may indicate that schistosomiasis prevalence in the selected Jiangxi villages had previously been higher than the selected Hunan villages where the prevalence by IHA was overall lower.

It is therefore likely that the IHA overestimates schistosomiasis prevalence but the procedure works well as an initial population screening method. In contrast, the KK procedure used in the CNSCP, performed on a single human stool sample with three slides subsequently examined microscopically, likely results in an underestimation of prevalence. The protocol is far from ideal, particularly with the current low intensity *S. japonicum* infections prevalent in China following the decades of control efforts and the yearly MDA programme in targeted communities. Accordingly, the true schistosomiasis prevalence probably lies somewhere in between the values derived from the CNSCP IHA and KK methods. The KK has long been preferred over more sensitive diagnostics in many schistosomiasis-endemic countries due to its low cost and the relative ease of performing the procedure (Gray *et al.*, 2010; Aula *et al.*, 2021). In future, it would be profitable for the CNSCP to consider incorporating more accurate and easy to use diagnostic procedures, but the incurred increased costs will need to be carefully considered.

Real-time PCR is highly sensitive even in areas with low-intensity schistosome infections (Lier *et al.*, 2009; Gordon *et al.*, 2011; He *et al.*, 2018) and we previously used this diagnostic procedure in China for the detection of *S. japonicum* infections in humans and animals (Van Dorssen *et al.*, 2017; He *et al.*, 2018). It is evident that while the results of the qPCR presented here do not match well with the CNSCP data, we believe that this DNA-based detection procedure provides a more accurate picture of the real status of schistosomiasis in Hunan and Jiangxi provinces – higher than the KK from the CNSCP, but lower than the IHA results (Tables 1 and 3).

Prevalence and intensity of *S. japonicum* infection in humans determined by qPCR

The cohort study population in both Hunan and Jiangxi provinces was demographically quite homogeneous, with the majority of participants from both provinces being farmers and/or fishermen, who owned their own land and house, worked in the village >5 years, and nearly 100% of whom lived and worked in their resident villages for more than 6 months a year (Supplementary Table 1). While there were some significant differences in prevalence between demographic variables, there were very few meaningful specific examples. In terms of occupation, as indicated, >85% of the study population were farmers and/or fishermen with nearly 69% classed as farmers only. Prevalence was highest in farmers/fishermen and businessmen/teachers, although this was not significantly different to other groups due to the low numbers of individuals categorized as having occupations other than farming and/or fishing; the businessmen/teacher occupation group had the lowest number of individuals with only two individuals positive for schistosomiasis. The intensity of infection in GMEPG was very high in a few study individuals which skewed the results in some instances, particularly where there were very few positive subjects in a particular classification (Supplementary Table 1).

Table 3. Results of the Chinese National Schistosomiasis Control Programme in 2016, with qPCR results from the current study included for comparison

Province	Villages	Total tested IHA	IHA pos	% pos IHA	95% CI	Total test KK	KK pos	% pos KK	95% CI	% pos qPCR	95% CI	Pos. snails
Jiangxi	Xinhua	532	75	14.10	11.14–17.05	75	3	4.00	0–8.43	1.88	0–4.0	0
	Dingshan	488	18	3.69	2.02–5.37	18	0	0.00	NA	0.00	na	0
	Caohui	562	72	12.81	10.05–15.57	72	0	0.00	NA	1.22	0–2.61	0
	Dongfang	511	48	9.39	6.86–11.92	48	0	0.00	NA	2.32	0.61–4.02	0
	Huangjia	516	21	4.07	2.36–5.77	21	0	0.00	NA	2.10	0.55–3.64	0
	Fuqian	526	77	14.64	11.62–17.66	77	0	0.00	NA	1.58	0–3.13	0
	Biaoen	566	49	8.66	6.34–10.97	49	0	0.00	NA	3.42	1.33–5.52	0
	Huanggin	509	79	15.52	12.37–18.67	79	0	0.00	NA	0.83	0–1.98	0
	Total			439				3				
Hunan	Longwang	511	24	4.70	2.86–6.53	24	0	0.00	NA	20.24	14.10–26.38	0
	Xiangjiang	610	6	0.98	0.20–1.77	6	0	0.00	NA	18.59	12.42–24.76	0
	Zhangshu	515	22	4.27	2.53–6.02	22	0	0.00	NA	8.08	4.74–11.41	0
	Changjiang	511	16	3.13	1.62–4.64	16	0	0.00	NA	2.61	0.69–4.53	0
	Ganzhou	523	8	1.53	0.48–2.58	8	2	25.00	0–55.01	8.00	4.91–11.09	0
	Xincheng	506	52	10.28	7.63–12.92	52	2	3.85	0–9.07	9.31	5.99–13.44	0
	Dongtinghong	548	43	7.85	5.60–10.10	43	0	0.00	NA	3.42	1.07–5.76	0
	Xinggang	508	24	4.72	2.88–6.57	24	2	8.33	0–19.39	2.21	0.4–3.96	0
	Total			195				6				

IHA, Indirect haemagglutination assay; KK, Kato-Katz; 95% CI, 95% confidence interval; qPCR, real-time PCR.

Table 4. Demographic characteristics of the study participants and wealth variable calculation

Variables	Total	Hunan Province	Jiangxi Province	Crude Odds Ratio (95% CI*)	Adjusted odds ratio (95% CI)
Number of administrative villages	16	8	8		
Number of households	2349	1099	1250		
Total number of individuals	3924	1905	2019		
Number with <i>Schistosoma japonicum</i> infection	189	153	36		
Wealth index					
Low	1049	285	764	1.68 (1.17–2.43)	1.73 (1.19–2.50)
High	1294	814	480		

*95% Confidence interval.

An earlier study that we conducted in 2013 in four Chinese provinces (Hunan, Anhui, Hubei and Jiangxi) utilizing qPCR determined human *S. japonicum* prevalence values of 27.0% for Hunan and 10.3% for Jiangxi (He *et al.*, 2018). In contrast, the results presented here for 2016 were 8.0% and 1.8% in Hunan and Jiangxi respectively. These substantially lower values were likely due to the impact of increased control efforts including the additional three annual rounds of MDA undertaken as part of the CNSCP. However, the 2013 survey examined far fewer individuals, with only 158 villagers from Jiangxi and 63 from Hunan, compared with, respectively, 2019 and 1905 subjects in the current study. By contrast, the infection intensity of *S. japonicum* determined by qPCR in the 2013 study was significantly lower than we recorded in 2016, with the average GMEPG in Hunan being 4.9 compared with 24.8 in the current study, and 3.5–7.0 in Jiangxi compared with 23.77 recorded here. No information on prior treatment was available for the 2013 study and the recorded infection intensity differences in the two surveys may have been due to different villages being sampled and that considerably more individuals were sampled in the current study. Only one village (Biaoen in Jiangxi), was sampled in both studies, with a much higher infection intensity (GMEPG; 3.48 vs 34.68) recorded in the current survey compared with the previous one, although the prevalence was higher in 2013 (13.00% vs 3.42%). Bovines, recognized major reservoirs of *S. japonicum* infection (Gray *et al.*, 2009a; 2009b; McManus *et al.*, 2018), were still present in Biaoen in 2015 (Supplementary Table 8) which likely contributed to parasite transmission there with the prevalence being the highest recorded for any of the sampled Jiangxi villages in the current study (Table 1).

Over the period 2004 to 2008 the infection prevalence of *S. japonicum*, determined by the insensitive KK method, was shown to be reduced from 11.27 to 3.12% in humans, and from 4.90 to 2.15% in bovines in the Dongting lake region of Hunan province (McManus *et al.*, 2011), emphasising the general downward trend over time in schistosomiasis prevalence in this setting.

Prevalence and intensity of infection of *S. japonicum* in animals by qPCR and ddPCR

Three types of large ungulates (water buffalo, cattle, and goats) were examined in the current study by qPCR and ddPCR. These animals were present in only three villages in Hunan province in 2016 and there was no significant ($P = 0.0913$) relationship between human infection prevalence and their presence or absence in the study villages. In the current study all bovines had been removed from all study villages in Jiangxi province, although just three years prior in 2013, Biaoen (the village with the highest human prevalence recorded in the current survey)

still maintained bovines, recording, by qPCR, a *S. japonicum* prevalence of 17.7% in 51 animals sampled (13% human prevalence was recorded; $n = 100$) (Table 2), and a prevalence of 1.3% ($n = 109$) in 2015 as part of the CNSCP (Supplementary Table 8).

Previously we demonstrated *S. japonicum* infections in goats and bovines from Hunan province using a range of diagnostic procedures (Van Dorssen *et al.*, 2017). Goat stool appears to have a considerable number of inhibitors present that prevents amplification of the *S. japonicum nad1* gene by qPCR, even in those samples parasite-positive by KK and MHT; however, these inhibitors are sufficiently diluted in the ddPCR assay, resulting in positive amplification and a higher prevalence than determined by the KK and MHT (Van Dorssen *et al.*, 2017). We did not identify any positive goats by qPCR or ddPCR in the current survey, but we did identify *S. japonicum*-positive bovines utilizing the ddPCR. As we have previously used qPCR without issue on bovine stools to diagnose *S. japonicum*, we expected it to perform at least as well as the ddPCR in this study. The intensity of infection was relatively low as shown by the CNIs calculated from the ddPCR results (Table 2), and it may be that the detection level is lower for ddPCR than qPCR, with ddPCR proving the more sensitive diagnostic procedure (Weerakoon *et al.*, 2016, 2017a, 2017b). In comparison, in our earlier 2013 study in Hunan province, cattle were positive by KK, MHT and qPCR with a GMEPG of 24.20 for KK and 480.96 by qPCR. These prevalence values were considerably higher than we recorded for water buffalo where none were positive by KK, only one was positive by MHT, and nine ($n = 10$) were positive by qPCR with a GMEPG of 132.57 (He *et al.*, 2018). Cattle are considered to be more susceptible to *S. japonicum* infection than water buffalo (Yang *et al.*, 2012a, 2012b; He *et al.*, 2018) given the latter are native animals whilst cattle are a relatively new introduction. The GMEPG calculated from the KK and qPCR assays in the earlier study was substantially higher than the CNIs presented here, confirming the lower intensity of infection in these animals in the current study. Older water buffalo excrete fewer viable eggs than animals <18 months old, a feature that may be due to self-cure, decreased egg viability, or decreased egg production by female worms (McManus *et al.*, 2010; Li *et al.*, 2014). In the current study, all water buffalo were under 20 months of age; thus the lower infection intensity we report likely reflects the overall reduction in transmission in the study area.

The Chinese government has, for some time, been removing cattle and water buffalo from schistosomiasis-endemic areas and replacing them with motorized tractors, or has fenced off these bovines to limit environmental contamination of the area with *S. japonicum* eggs (McManus *et al.*, 2011; Li *et al.*, 2020). As indicated, bovines are recognized as major reservoir hosts of *S.*

japonicum in China and contribute substantially to human transmission due to the large numbers of schistosome eggs they excrete daily (Guo *et al.*, 2001; Gray *et al.*, 2009b; He *et al.*, 2018).

Previous schistosomiasis status

The majority of participants at baseline reported previously having had schistosomiasis (68.1%), although very few had advanced (0.7%; $n = 29$) or acute disease (1.7%; $n = 66$) (Supplementary Table 1). Schistosomiasis is a long-lived infection that can result in chronic disease with liver and spleen granulomas leading to hepatosplenomegaly (McManus *et al.*, 2009, 2018; Gordon *et al.*, 2019). However, the regular MDA programme of the CNSCP has reduced the number of people developing the chronic disease through the regular treatment of those at risk of infection. The relatively high number of individuals positive in our cohort study that had never previously received treatment for schistosomiasis indicates a gap in the CNSCP that needs to be addressed by improving the accuracy of the diagnostics procedures used, and by increasing the precision of the targeted MDA programme to include treating all farmers/fishermen as they have the highest risk of infection.

Snail survey and LAMP

No *S. japonicum*-positive snails were identified in any of the 16 villages in this study and none were recorded in the CNSCP. More snails were collected in Jiangxi than Hunan although no snails were recorded in two villages, one each from Jiangxi (Biaoen) and Hunan (Ganzhou). This is likely due to the same snail survey sites being visited in the current study, and by the CNSCP field teams in some villages, which would lead to an overall lower number of snails being collected in those locations. As both villages where no snails were recorded did have positive human infections it is likely that snail habitats were missed as the presence of oncomelaniids are pre-requisites for schistosomiasis transmission. That no positive snails were identified may be due also to the low overall prevalence and intensity of *S. japonicum* infection in both provinces. As indicated above, bovines are major reservoirs of *S. japonicum* infection and with their removal or a decrease in the numbers of these animals in an endemic area, there is a considerable reduction in the number of schistosome eggs being excreted into the environment. None-the-less, humans were clearly getting infected in both provinces and other animal species may have participated as transmission reservoirs; our previous survey failed to identify any patent infections in rodents in the Dongting lake area (Van Dorssen *et al.*, 2017), so a human-snail-human route is a likely transmission pathway.

In both the CNSCP and in this study, *Oncomelania* snails were pooled in groups of 50 prior to DNA being extracted from each pool and subjected to LAMP. As the *S. japonicum* prevalence in animals and humans is reduced, the number of infected snails will also drop. Pooling is a cost-effective and fast way to survey a large number of snails, but is subject to the dilution effect (Hung and Swallow, 1999). In high-intensity transmission areas, the number of positive snails in a pool will be quite high and, therefore, readily identified. As the number of positive snails drops due to successful control efforts, the number of positive snails in a pool will also be reduced. The signal from one positive snail in a pool of 50 may be diluted to such an extent that it results in a false negative LAMP result. However, a previous study showed that a single infected snail in a pool of 100 was still detectable using the LAMP method (Kumagai *et al.*, 2010). It is more likely that positive snails were simply missed during collection due to the low prevalence of *S. japonicum* in the

study areas. Indeed, the total population of snails and the prevalence of infected snails have been shown to be falling in the Dongting lake area of Hunan with no infected snails found in surveys performed in 2006–2008 (McManus *et al.*, 2011).

In future, qPCR or ddPCR could be used as an alternative to LAMP to assess snail prevalence as they are more sensitive assays (Weerakoon *et al.*, 2018).

Water contact

Reported water contact was high in the cohort study villages with 88% of villagers stating they had had water contact in the previous 12 months and 20% having water contact more than once a week (Supplementary Table 1). Water contact was at its highest for all villager activities in the summer, and at its lowest in autumn. There are two main *S. japonicum* transmission seasons in China. In the Dongting lake area, the first commences with the rainy season in April, at which time snail populations expand due to the warmer weather and increased water levels in the Dongting lake; the second peak in the transmission is from October to November (McManus *et al.*, 2011). The Poyang lake is fed by inland rivers between April and June, raising the water level and accounting for the first transmission season, and is then fed by the Yangtze river between July and September – accounting for the second transmission season (Xue *et al.*, 2021).

During the colder months, the *Oncomelania* snails bury themselves underground to survive and transmission is therefore low to zero in winter. Thus, the highest numbers of snails, and thus transmission, and the peak of human water contact activities occur in the summer.

Farming/cutting grass was significantly associated with *S. japonicum* infection. A previous study in Hunan province, which used water contact diaries, also identified cutting grass as a significant risk factor for schistosomiasis, along with fishing, crossing water, washing and playing (Ross *et al.*, 1998). Night soil has traditionally been used as fertilizer in China and may contribute to the transmission of schistosomiasis, particularly among farmers (Carlton *et al.*, 2015).

Defecation modes

Open defecation is an important risk factor for schistosomiasis transmission, particularly when it occurs in snail habitat areas. In our study, very few individuals were defecating in the marshlands or lakes, and while only two of these individuals tested positive for schistosomiasis, human defecation may still be important for ongoing transmission in the area. It should also be considered that the questionnaire we employed may not have captured information on casual open defecation practices as it asked for two primary modes of defecation and not all modes of defecation.

Wealth index

As indicated earlier, poor health may be as a consequence of poverty due to the inability to afford adequate nutrition, housing, education, and healthcare. Poverty as an indicator for schistosome infection is likely to be due to inadequate hygiene infrastructure such as flushable toilets and access to clean, safe water. In general, economic growth in China has led to decreases in the numbers of individuals living in poverty and increases in overall community health (Ross *et al.*, 2001; Balen *et al.*, 2010). However, there are still income and wealth gaps apparent, particularly between rural and urban locations (Balen *et al.*, 2010). Overall, in the current study, there was a higher prevalence of *S. japonicum* infection in households with a lower wealth index than those with a higher wealth index (Table 4).

An earlier study examining different variables that may help assess household wealth also found that rural houses were less likely to have adequate access to good hygiene infrastructure, in the form of access to tap water and flushable toilets, than those in a peri-urban setting (Balen *et al.*, 2010). This can obviously have a huge impact on the potential transmission of schistosomiasis in addition to giving insight into household wealth. In the current study, the majority of households had flushable toilets (78.4%) while just over half (54.8%) had access to tap water, the remaining households accessing water *via* a hand pump (15.8%) or well (27.8%) and used either dry latrines (3.79%) or wet latrines (17.58%) (Supplementary Table 9). Prevalence of schistosomiasis was similar between those with flushable toilets (7.7%; 95% CI 6.4–8.9) and those who used wet latrines (7.8%; 95% CI 5.2–10.3) (Supplementary Table 9).

Treatment options other than praziquantel

MDA with PZQ is a cornerstone of MDA for schistosomiasis control worldwide. Praziquantel is cheap, with the drug often provided free of charge due to arrangements with non-government organizations and pharmaceutical companies. MDA is also inexpensive to implement as it does not require case finding before administration, although a lack of case finding has been linked with low compliance in some endemic countries (Inobaya *et al.*, 2018). Treatment with PZQ also does not prevent re-infection, and nor is it effective against migrating schistosomula, and thus infection and transmission continue. In China, PZQ is listed as a prescription medicine and outside of the control programme, people at risk of infection can only receive PZQ after receiving a positive diagnosis.

The antimalarial artemether, has shown efficacy against schistosomula, and although less effective against adults, it could be used as a prophylactic control measure individually or in combination with PZQ (Xiao *et al.*, 2000; 2002; Li *et al.*, 2005). However, its use would be restricted to areas non-endemic for malaria due to the potential for drug-resistant *Plasmodium* parasites developing. A field trial in four endemic provinces in China found a much lower prevalence of *S. japonicum* in villages where artemether was given to local at-risk residents four times at intervals of 15 days compared to control villages (Xiao *et al.*, 2000).

More recently, a number of compounds derived from *Paecilomyces* sp., a soil fungus, have been investigated for anti-schistosomal properties with particular emphasis on migrating schistosomula. A number of these compounds have been tested *in vitro* with five compounds exhibiting death rates against skin schistosomula above 90% in the first 24 h. One of these, radicicol (RAD), has been tested in *in vivo* and is highly effective against early-stage skin schistosomula, reducing the worm burden by 91.2% (Xu *et al.*, 2021).

It is clear that new anti-schistosomal drugs are being sought by a number of research groups in China (Xiong *et al.*, 2021), but they have yet to be shown as effective as PZQ or incorporated into the CNSCP. Areas in China where previously control had been withdrawn due to low prevalence in humans saw a resurgence with prevalence levels returning to high levels within a few years of schistosomiasis control cessation (Liang *et al.*, 2006; Li *et al.*, 2020). In order to achieve elimination and prevent rebound infections, both more sensitive diagnostics and treatment strategies need to be employed in the future.

Conclusion

The CNSCP has been very successful, reducing schistosomiasis prevalence from 12 million in 1949 to less than 200 000 in 2013 with a key element being the shift in focus from determining

morbidity outcomes to detecting infections and measuring transmission (WHO, 2013; Lei *et al.*, 2014; Yang *et al.*, 2014). China now seeks to achieve the goal of schistosomiasis elimination by 2030, a revised date from earlier time scale pronouncements. This later date to achieve the goal of elimination indicates that while the overall prevalence is low, schistosomiasis is still persisting, a feature likely due in part to the diagnostics procedures currently employed whereby some individuals with schistosomiasis are misdiagnosed as being uninfected. The persistence of the disease may also be due to the reliance on PZQ for treatment, a drug with poor efficacy against schistosomula. Continued research into other drugs, including artemether, which do target juvenile stages and could be used in combination with PZQ should be encouraged. Continued challenges as China moves towards schistosomiasis elimination include the wide host range of *S. japonicum* with more than 40 species of mammalian host reservoir identified (He *et al.*, 2001), the large areas of snail habitats in endemic areas, and the unavoidable water contact for some occupational groups. The fact there is no currently available anti-schistosomiasis vaccine is also a limiting factor for control (Molehin *et al.*, 2016).

The lack of *S. japonicum*-positive snails evident in our study villages and recorded by CNSCP for the same locations may indicate decreased transmission in this setting; however further monitoring of additional snail habitats in the study villages would likely have resulted in some positive snails being identified. As we observed here, the use of targeted chemotherapy may miss treating some individuals infected with *S. japonicum*; a number of individuals, who had never received previous treatment for schistosomiasis, tested positive by qPCR, highlighting potential issues in disease surveillance. Similarly, a re-appraisal of the diagnostics procedures currently employed in the CNSCP appears warranted if the goal of schistosomiasis elimination by 2030 is to be realized.

Supplementary material. The supplementary material for this article can be found at <https://doi.org/10.1017/S0031182021001724>.

Data. All data are presented either in the manuscript or as supplementary files. Raw data files will be made available upon request.

Acknowledgements. The authors sincerely acknowledge the assistance and work of members of the Hunan Institute of Parasitic Diseases (HIPD), Jiangxi Institute of Parasitic Diseases (JIPD) and the National Institute of Parasitic Diseases (NIPD), as well as regional staff and volunteers from the local village areas.

We also acknowledge Gunter Hartel from QIMR Berghofer for statistics support, and Madeleine Flynn also from QIMR Berghofer for graphical illustrations.

Author contribution. Conceived study: DPM, GMW, DJG, ACAC, XNZ, YL, JU. Project development: DPM, GMW, DJG, ACAC, XNZ, YL, JU, JK, SF, JX, CAG. Laboratory work: ZL, SL, XY, GL, DL, ZL, FH, JG, SX, JC, TS, CL, HZ, CAG. Field work and training: CAG, GMW, DJG, XNZ, YL, JK, SF, JX, HZ, ACAC. Project stage manager: JZ, ZL, DL, JG. Data entry: GL, SL, HZ. Data capture and cleaning: GMW, JK, SF. Data analysis: JK, CAG, KAA, GMW. Manuscript first draft: CAG. Manuscript editing: CAG, DPM, JK, ACAC, KAA, YL, DJG. Funding acquisition: DPM, DJG, JU, RB, XNZ, GMW.

Financial support. This work received financial support from a Project Grant (APP1098244; DPM, GMW, DJG, ACAC, XNZ, YL, JU), a Programme Grant (APP1132975; DPM), a Research Fellowship (APP1102926; DPM) and an Investigator Grant (APP1194462; DPM) from the National Health and Medical Research Council of Australia.

Conflicts of interest. The authors declare there are no conflicts of interest.

Ethical standards. Informed written consent was received from all individuals enrolled in the study, and from parents/guardians of minors. Ethical approval for human and animal work was provided by the Ethics Committees of QIMR Berghofer Medical Research Institute (Human Research Ethics Committee Reference Number P524; Animal Ethics Committee Reference Number A1003–601), Hunan Institute of Parasitic

Diseases (HIPD), Jiangxi Institute of Parasitic Diseases (JIPD) and the National Institute of Parasitic Diseases (NIPD) in Shanghai.

All human subjects found to be positive for *S. japonicum* during the course of the study were referred to the local schistosomiasis control station for treatment with praziquantel (PZQ) at the WHO recommended dose of 40 mg kg⁻¹.

Informed written consent was received from all animal owners in the study sites and the study was performed in accordance with the recommendations of the 2013 Australian code of practice for the care and use of animals for scientific purposes.

References

- Aula OP, McManus DP, Mason MG, Botella JR and Gordon CA (2021) Rapid parasite detection utilizing a DNA dipstick. *Experimental Parasitology* **224**, 108098.
- Balen J, McManus DP, Li YS, Zhao ZY, Yuan LP, Utzinger J, Williams GM, Li Y, Ren MY, Liu ZC, Zhou J and Raso G (2010) Comparison of two approaches for measuring household wealth via an asset-based index in rural and peri-urban settings of Hunan province, China. *Emerging Themes in Epidemiology* **7**, 7.
- Barreto ML, Smith DH and Sleight AC (1990) Implications of faecal egg count variation when using the Kato-Katz method to assess *Schistosoma mansoni* infections. *Transactions of the Royal Society of Tropical Medicine and Hygiene* **84**, 554–555.
- Berhe N, Medhin G, Erko B, Smith T, Gedamu S, Bereded D, Moore R, Habte E, Redda A, Gebre-Michael T and Gundersen SG (2004) Variations in helminth faecal egg counts in Kato-Katz thick smears and their implications in assessing infection status with *Schistosoma mansoni*. *Acta Tropica* **92**, 205–212.
- Carlton EJ, Liu Y, Zhong B, Hubbard A and Spear RC (2015) Associations between schistosomiasis and the use of human waste as an agricultural fertilizer in China. *PLoS Neglected Tropical Diseases* **9**, e0003444.
- Chen JH, Wang H, Chen JX, Bergquist R, Tanner M, Utzinger J and Zhou XN (2012) Frontiers of parasitology research in the People's Republic of China: infection, diagnosis, protection and surveillance. *Parasite & Vectors* **5**, 221.
- Chen C, Guo Q, Fu Z, Liu J, Lin J, Xiao K, Sun P, Cong X, Liu R and Hong Y (2021) Reviews and advances in diagnostic research on *Schistosoma japonicum*. *Acta Tropica* **213**, 105743.
- China SCO (2016) The strategic plan healthy China 2030.
- Dang H, Jin J, Xu J, Li S, Zhou X, Sun J, Li Z and Lu S (2017) Surveillance of schistosomiasis in People's Republic of China in 2015. *Chinese Journal of Schistosomiasis Control* **29**, 273–280.
- Dang H, Li Y, Guo J, Xu J, Li S and Lu S (2021) National surveillance of schistosomiasis morbidity in China, 2015–2019. *Chinese Journal of Schistosomiasis Control* **33**, 120–126.
- De Vlas SJ, Gryseels B, Van Oortmarssen GJ, Polderman AM and Habbema JDF (1992) A model for variations in single and repeated egg counts in *Schistosoma mansoni* infections. *Parasitology* **104**, 451–460.
- De Vlas SJ, Engels D, Rabello ALT, Oostburg BFF, Van Lieshout L, Polderman AM, Van Oortmarssen GJ, Habbema JDF and Gryseels B (1997) Validation of a chart to estimate true *Schistosoma mansoni* prevalences from simple egg counts. *Parasitology International* **114**, 113–121.
- Engels D, Nahimana S and Gryseels B (1996a) Comparison of the direct faecal smear and two thick smear techniques for the diagnosis of intestinal parasitic infections. *Transactions of the Royal Society of Tropical Medicine and Hygiene* **90**, 523–525.
- Engels D, Sinzinkayo E and Gryseels B (1996b) Day-to-day egg count fluctuation in *Schistosoma mansoni* infection and its operational implications. *American Journal of Tropical Medicine and Hygiene* **54**, 319–324.
- Feldmeier H, Nogueira-Queiroz JA, Peixoto-Queiroz MA, Doehring E, Dessaint P, De Alencar JE, Dafalla AA and Capron A (1986) Detection and quantification of circulating antigen in schistosomiasis by monoclonal antibody. II. The quantification of circulating antigens in human schistosomiasis mansoni and haematobium: relationship to intensity of infection and disease status. *Clinical and Experimental Immunology* **65**, 232–243.
- Filmer D and Pritchett LH (2001) Estimating wealth effects without expenditure data--or tears: an application to educational enrollments in states of India. *Demography* **38**, 115–132.
- Glinz D, Silué KD, Knopp S, Lohouringnon LK, Yao KP, Steinmann P, Rinaldi L, Cringoli G, N'goran EK and Utzinger J (2010) Comparing diagnostic accuracy of Kato-Katz, Koga agar plate, ether-concentration, and FLOTAC for *Schistosoma mansoni* and soli-transmitted helminths. *Plos Neglected Tropical Diseases* **4**, e754.
- Gordon CA, Gray DJ, Gobert GN and McManus DP (2011) DNA Amplification approaches for the diagnosis of key parasitic helminth infections of humans. *Molecular and Cellular Probes* **25**, 143–152.
- Gordon CA, Acosta LP, Gray DJ, Olveda R, Jarilla B, Gobert GN, Ross AG and McManus DP (2012) High prevalence of *Schistosoma japonicum* infection in carabao from Samar province, the Philippines: implications for transmission and control. *PLoS Neglected Tropical Diseases* **6**, e1778.
- Gordon CA, Acosta LP, Gobert GN, Jiz M, Olveda RM, Ross AG, Gray DJ, Williams GM, Harn D, Yuesheng L and McManus DP (2015a) High prevalence of *Schistosoma japonicum* and *Fasciola gigantica* in bovines from Northern Samar, the Philippines. *PLoS Neglected Tropical Diseases* **9**, e0003108.
- Gordon CA, Acosta LP, Gobert GN, Olveda RM, Ross AG, Williams GM, Gray DJ, Harn D, Li Y and McManus DP (2015b) Real-time PCR demonstrates high prevalence of *Schistosoma japonicum* in the Philippines: implications for surveillance and control. *PLoS Neglected Tropical Diseases* **9**, e0003483.
- Gordon CA, Kurscheid J, Williams GM, Clements ACA, Li Y, Zhou X-N, Utzinger J, McManus DP and Gray DJ (2019) Asian schistosomiasis: current status and prospects for control leading to elimination. *Tropical Medicine and Infectious Disease* **4**, 40.
- Gray DJ, Williams GM, Li Y and McManus DP (2008) Transmission dynamics of *Schistosoma japonicum* in the lakes and marshlands of China. *PLoS One* **3**, e4058.
- Gray DJ, Williams GM, Li Y, Chen H, Forsyth SJ, Li RS, Barnett AG, Guo J, Ross AG, Feng Z and McManus DP (2009a) A cluster-randomised intervention trial against *Schistosoma japonicum* in the Peoples' Republic of China: bovine and human transmission. *PLoS One* **4**, e5900.
- Gray DJ, Williams GM, Li YS, Chen HG, Forsyth S, Li R, Barnett A, Guo JG, Ross A, Feng Z and McManus DP (2009b) The role of bovines in human *Schistosoma japonicum* infection in the People's Republic of China. *American Journal of Tropical Medicine and Hygiene* **81**, 1046.
- Gray DJ, McManus DP, Li Y, Williams GM, Bergquist R and Ross AG (2010) Schistosomiasis elimination: lessons from the past guide the future. *The Lancet Infectious Diseases* **10**, 733–736.
- Gray DJ, Li YS, Williams GM, Zhao ZY, Harn DA, Li SM, Ren MY, Feng Z, Guo FY, Guo JG, Zhou J, Dong YL, Li Y, Ross AG and McManus DP (2014) A multi-component integrated approach for the elimination of schistosomiasis in the People's Republic of China: design and baseline results of a 4-year cluster-randomised intervention trial. *International Journal for Parasitology* **44**, 659–668.
- Guo J, Ross AG, Lin D, Williams GM, Chen H, Li Y, Davis GM, Feng Z, McManus DP and Sleight AC (2001) A baseline study on the importance of bovines for human *Schistosoma japonicum* infection around Poyang lake, China. *American Journal of Tropical Medicine and Hygiene* **65**, 272–278.
- Guo JY, Zhang LJ, Cao CL, Lü S, Xu J, Li SZ and Zhou XN (2020) [Challenges of schistosomiasis control in China during the coronavirus disease 2019 (COVID-19) epidemic]. *Zhongguo Xue Xi Chong Bing Fang Zhi Za Zhi = Chinese Journal of Schistosomiasis Control* **32**, 511–516.
- Habtamu K, Degarege A, Ye-Ebiyo Y and Erko B (2011) Comparison of the Kato-Katz and FLOTAC techniques for the diagnosis of soil-transmitted helminth infections. *Parasitology International* **60**, 398–402.
- Harris PA, Taylor R, Thielke R, Payne J, Gonzalez N and Conde JG (2009) Research electronic data capture (REDCap)--a metadata-driven methodology and workflow process for providing translational research informatics support. *The Journal of Biomedical Informatics* **42**, 377–381.
- Harris PA, Taylor R, Minor BL, Elliott V, Fernandez M, O'neal L, McLeod L, Delacqua G, Delacqua F, Kirby J and Duda SN (2019) The REDCap consortium: building an international community of software platform partners. *The Journal of Biomedical Informatics* **95**, 103208.
- He Y, Salafsky B and Ramaswamy K (2001) Host-parasite relationships of *Schistosoma japonicum* in mammalian hosts. *Trends in Parasitology* **17**, 320–324.
- He P, Gordon CA, Williams GM, Yuesheng L, Wang Y, Hu J, Gray DJ, Ross AG, Harn D and McManus DP (2018) Real-time PCR diagnosis of *Schistosoma japonicum* in low transmission areas of China. *Infectious Diseases of Poverty* **7**, 8
- Hung M and Swallow WH (1999) Robustness of group testing in the estimation of proportions. *Biometrics* **55**, 231–237.

- Inobaya MT, Chau TN, Ng S-K, Macdougall C, Olveda RM, Tallo VL, Landicho JM, Malacad CM, Aligato MF, Guevarra JB and Ross AG (2018) Mass drug administration and the sustainable control of schistosomiasis: an evaluation of treatment compliance in the rural Philippines. *Parasites & Vectors* **11**, 441.
- Katz N, Chaves A and Pellegrino J (1972) A simple device for quantitative stool thick smear technique in schistosomiasis mansoni. *Revista do Instituto de Medicina Tropical de São Paulo* **14**, 397–400.
- Kumagai T, Furushima-Shimogawara R, Ohmae H, Wang T, Lu S, Chen R, Wen L and Ohta N (2010) Detection of early and single infections of *Schistosoma japonicum* in the intermediate host snail, *Oncomelania hupensis*, by PCR and loop-mediated isothermal amplification (LAMP) assay. *American Journal of Tropical Medicine and Hygiene* **83**, 542–548.
- Lei ZL, Zheng H, Zhang LJ, Zhu R, Xu ZM, Xu J, Fu Q, Wang Q, Li SZ and Zhou XN (2014) [Endemic status of schistosomiasis in People's Republic of China in 2013]. *Zhongguo Xue Xi Chong Bing Fang Zhi Za Zhi = Chinese Journal of Schistosomiasis Control* **26**, 591–597.
- Li YS, Chen HG, He HB, Hou XY, Ellis M and McManus DP (2005) A double-blind field trial on the effects of artemether on *Schistosoma japonicum* infection in a highly endemic focus in southern China. *Acta Tropica* **96**, 184–190.
- Li Y-S, McManus DP, Lin D-D, Williams GM, Harn DA, Ross AG, Feng Z and Gray DJ (2014) The *Schistosoma japonicum* self-cure phenomenon in water buffaloes: potential impact on the control and elimination of schistosomiasis in China. *International Journal for Parasitology* **44**, 167–171.
- Li F-Y, Hou X-Y, Tan H-Z, Williams GM, Gray DJ, Gordon CA, Kurscheid J, Clements ACA, Li Y-S and McManus DP (2020) Current status of schistosomiasis control and prospects for elimination in the Dongting lake region of the People's Republic of China. *Frontiers in Immunology* **11**, 574136
- Liang S, Yang C, Zhong B and Qiu D (2006) Re-emerging schistosomiasis in hilly and mountainous areas of Sichuan, China. *Bulletin of the World Health Organization* **84**, 139–144.
- Lier T, Simonsen GS, Haaheim H, Hjelmevoll SO, Vennervald BJ and Johansen MV (2006) Novel real-time PCR for detection of *Schistosoma japonicum* in stool. *Southeast Asian Journal of Tropical Medicine and Public Health* **37**, 257–264.
- Lier T, Simonsen GS, Wang T, Lu D, Haukland HH, Vennervald BJ, Hegstad J and Johansen MV (2009) Real-time polymerase chain reaction for detection of low-intensity *Schistosoma japonicum* infections in China. *American Journal of Tropical Medicine and Hygiene* **81**, 428–432.
- McManus DP, Li Y, Gray DJ and Ross AG (2009) Conquering 'snail fever': schistosomiasis and its control in China. *Expert Review of Anti-Infective Therapy* **7**, 473–485.
- McManus DP, Gray DJ, Li Y, Feng Z, Williams GM, Stewart D, Rey-Ladino J and Ross AG (2010) Schistosomiasis in the People's Republic of China: the era of the three gorges dam. *Clinical Microbiology Reviews* **23**, 442–466.
- McManus DP, Gray DJ, Ross AG, Williams GM, He HB and Li YS (2011) Schistosomiasis research in the Dongting lake region and its impact on local and national treatment and control in China. *PLoS Neglected Tropical Diseases* **5**, e1053.
- McManus DP, Dunne DW, Sacko M, Utzinger J, Vennervald BJ and Zhou XN (2018) Schistosomiasis. *Nature Reviews: Disease Primers* **4**, 13.
- Ministry of Health (2000) *Handbook for Schistosomiasis*. Shanghai: Shanghai Science & Technology Press.
- Molehin AJ, Rojo JU, Siddiqui SZ, Gray SA, Carter D and Siddiqui AA (2016) Development of a schistosomiasis vaccine. *Expert Reviews of Vaccines* **15**, 619–627.
- Qin ZQ, Xu J, Feng T, Lv S, Qian YJ, Zhang LJ, Li YL, Lv C, Bergquist R, Li SZ and Zhou XN (2018) Field evaluation of a loop-mediated isothermal amplification (LAMP) platform for the detection of *Schistosoma japonicum* infection in *Oncomelania hupensis* snails. *Tropical Medicine and Infectious Disease* **3**, 124
- Ross AG, Yuesheng L, Sleight AC, Williams GM, Hartel GF, Forsyth SJ, Yi L and McManus DP (1998) Measuring exposure to *S. japonicum* in China. I. Activity diaries to assess water contact and comparison to other measures. *Acta Tropica* **71**, 213–228.
- Ross AGP, Sleight AC, Li Y, Davis GM, Williams G, Jiang Z, Feng Z and McManus DP (2001) Schistosomiasis in the People's Republic of China: prospects and challenges for the 21st century. *Clinical Microbiology Reviews* **14**, 270–279.
- Tong QB, Chen R, Zhang Y, Yang GJ, Kumagai T, Furushima-Shimogawara R, Lou D, Yang K, Wen LY, Lu SH, Ohta N and Zhou XN (2015) A new surveillance and response tool: risk map of infected *Oncomelania hupensis* detected by loop-mediated isothermal amplification (LAMP) from pooled samples. *Acta Tropica* **141**, 170–177.
- Utzinger J, Booth M, N'goran EK, Müller I, Tanner M and Lengeler C (2001) Relative contribution of day-to-day and intra-specimen variation in faecal egg counts of *Schistosoma mansoni* before and after treatment with praziquantel. *Parasitology International* **122**, 537–544.
- Utzinger J, Brattig NW, Leonardo L, Zhou X-N and Bergquist R (2015) Progress in research, control and elimination of helminth infections in Asia. *Acta Tropica* **141**(Pt B), 135–145.
- Van Dam GJ, Xu J, Bergquist R, De Dood CJ, Utzinger J, Qin ZQ, Guan W, Feng T, Yu XL, Zhou J, Zheng M, Zhou XN and Corstjens PL (2015) An ultra-sensitive assay targeting the circulating anodic antigen for the diagnosis of *Schistosoma japonicum* in a low-endemic area, People's Republic of China. *Acta Tropica* **141**, 190–197.
- Van Dorssen CF, Gordon CA, Li Y, Williams GM, Wang Y, Luo Z, Gobert GN, You H, McManus DP and Gray DJ (2017) Rodents, goats and dogs – their potential roles in the transmission of schistosomiasis in China. *Parasitology* **144**, 1633–1642.
- Vyas S and Kumaranayake L (2006) Constructing socio-economic status indices: how to use principal components analysis. *Health Policy and Planning* **21**, 459–468.
- Wang L, Chen H, Guo J, Zeng X, Hong X, Xiong J, Wu X, Wang X, Wang L, Xia G, Hao Y, Chin DP and Zhou X (2009) A strategy to control transmission of *Schistosoma japonicum* in China. *New England Journal of Medicine* **360**, 121–128.
- Weerakoon KG, Gobert GN, Cai P and McManus DP (2015) Advances in the diagnosis of human schistosomiasis. *Clinical Microbiology Reviews* **28**, 939–967.
- Weerakoon KG, Gordon CA, Gobert GN, Cai P and McManus DP (2016) Optimisation of a droplet digital PCR assay for the diagnosis of *Schistosoma japonicum* infection: a duplex approach with DNA binding dye chemistry. *Journal of Microbiological Methods* **125**, 19–27.
- Weerakoon KG, Gordon CA, Cai P, Gobert GN, Duke M, Williams GM and McManus DP (2017a) A novel duplex ddPCR assay for the diagnosis of schistosomiasis japonica: proof of concept in an experimental mouse model. *Parasitology* **144**, 1005–1015.
- Weerakoon KG, Gordon CA, Williams GM, Cai P, Gobert GN, Olveda RM, Ross AG, Olveda DU and McManus DP (2017b) Droplet digital PCR diagnosis of human schistosomiasis: parasite cell-free DNA detection in diverse clinical samples. *The Journal of Infectious Diseases* **216**, 1611–1622.
- Weerakoon KG, Gordon CA and McManus DP (2018) DNA Diagnostics for schistosomiasis control. *Tropical Medicine and Infectious Disease* **3**, 81.
- WHO (2013) Schistosomiasis progress report 2001–2011 and strategic plan 2012–2020. Geneva: World Health Organization.
- Xiao SH, Booth M and Tanner M (2000) The prophylactic effects of artemether against *Schistosoma japonicum* infections. *Parasitology Today* **16**, 122–126.
- Xiao S, Tanner M, N'goran EK, Utzinger J, Chollet J, Bergquist R, Chen M and Zheng J (2002) Recent investigations of artemether, a novel agent for the prevention of schistosomiasis japonica, mansoni and haematobia. *Acta Tropica* **82**, 175–181.
- Xiong YH, Xu XN and Zheng B (2021) Patented technologies for schistosomiasis control and prevention filed by Chinese applicants. *Infectious Diseases of Poverty* **10**, 84.
- Xu J, Li SZ, Zhang LJ, Bergquist R, Dang H, Wang Q, Lv S, Wang TP, Lin DD, Liu JB, Ren GH, Yang K, Liu Y, Dong Y, Zhang SQ and Zhou XN (2020) Surveillance-based evidence: elimination of schistosomiasis as a public health problem in the Peoples' Republic of China. *Infectious Diseases of Poverty* **9**, 63.
- Xu L, Liu Q, Zeng Q, Wu P, Yu Q, Gu K, Xue J and Wei X (2021) Radicolol, a Novel Lead Compound against the Migratory-Stage Schistosomula of *Schistosoma japonicum*. *Antimicrobial Agents Chemotherapy* **65**, e01781–20.
- Xue J-B, Wang X-Y, Zhang L-J, Hao Y-W, Chen Z, Lin D-D, Xu J, Xia S and Li S-Z (2021) Potential impact of flooding on schistosomiasis in Poyang lake regions based on multi-source remote sensing images. *Parasites & Vectors* **14**, 116.
- Yang J, Feng X, Fu Z, Yuan C, Hong Y, Shi Y, Zhang M, Liu J, Li H, Lu K and Lin J (2012a) Ultrastructural observation and gene expression profiling of *Schistosoma japonicum* derived from two natural reservoir hosts, water buffalo and yellow cattle. *PLoS One* **7**, e47660.
- Yang J, Fu Z, Feng X, Shi Y, Yuan C, Liu J, Hong Y, Li H, Lu K and Lin J (2012b) Comparison of worm development and host immune responses in

- natural hosts of *Schistosoma japonicum*, yellow cattle and water buffalo. *BMC Veterinary Research* **8**, 25.
- Yang K, Sun LP, Liang YS, Wu F, Li W, Zhang JF, Huang YX, Hang DR, Liang S, Bergquist R and Zhou XN** (2013) *Schistosoma japonicum* risk in Jiangsu province, People's Republic of China: identification of a spatio-temporal risk pattern along the Yangtze river. *Geospatial Health* **8**, 133–142.
- Yang G-J, Liu L, Zhu H-R, Griffiths SM, Tanner M, Bergquist R, Utzinger J and Zhou X-N** (2014) China's sustained drive to eliminate neglected tropical diseases. *The Lancet Infectious Diseases* **14**, 881–892.
- Yeh H-Y and Mitchell PD** (2016) Ancient human parasites in ethnic Chinese populations. *Korean Journal of Parasitology* **54**, 565–572.
- Yu JM, de Vlas SJ, Jiang QW and Gryseels B** (2007) Comparison of the Kato-Katz technique, hatching test and indirect hemagglutination assay (IHA) for the diagnosis of *Schistosoma japonicum* infection in China. *Parasitology International* **56**, 45–49.
- Zhang LJ, Xu ZM, Guo JY, Dai SM, Dang H, Lü S, Xu J, Li SZ and Zhou XN** (2019) [Endemic status of schistosomiasis in People's Republic of China in 2018]. *Chinese Journal of Schistosomiasis Control* **31**, 576–582.
- Zhou X, Guo J, Wu X, Jiang Q, Zheng J, Dang H, Wang X, Xu J, Zhu H, Wu G, Li Y, Xu X, Chen H, Wang T, Zhu Y, Qiu D, Dong X, Zhao G, Zhang S, Zhao N, Xia G, Wang L, Zhang S, Lin D, Chen M and Hao Y** (2004) Epidemiology of schistosomiasis in the People's Republic of China, 2004. *Emerging Infectious Diseases* **13**, 1470–1476.
- Zhou X, Bergquist R, Leonardo LR and Olveda R** (2008a) *Schistosomiasis: the disease and its control*, Regional Network for Research, Surveillance and Control for Asian Schistosomiasis.
- Zhou YB, Yang MX, Tao P, Jiang QL, Zhao GM, Wei JG and Jiang QW** (2008b) A longitudinal study of comparison of the Kato-Katz technique and indirect hemagglutination assay (IHA) for the detection of schistosomiasis japonica in China, 2001–2006. *Acta Tropica* **107**, 251–254.
- Zhou Y-B, Liang S, Chen G-X, Rea C, He Z-G, Zhang Z-J, Wei J-G, Zhao G-M and Jiang Q-W** (2011) An integrated strategy for transmission control of *Schistosoma japonicum* in a marshland area of China: findings from a five-year longitudinal survey and mathematical modeling. *American Journal of Tropical Medicine and Hygiene* **85**, 83–88.