

CHAPTER 2.

Zeldovich legacy: Dynamics & Evolution of the Cosmic Web



*An organizer's discussion:
Jaan Einasto, Sergei Shandarin and Rien van de Weygaert.*



A selection of participants at IAU308.

Understanding the cosmic web

Marius Cautun^{1,2}, Rien van de Weygaert², Bernard J. T. Jones² and Carlos S. Frenk¹

¹Department of Physics, Institute for Computational Cosmology, University of Durham, South Road, Durham DH1 3LE, UK, email: m.c.cautun@durham.ac.uk

²Kapteyn Instituut, Rijksuniversiteit Groningen, P.O. Box 800, 9700 AV Groningen, The Netherlands

Abstract. We investigate the characteristics and the time evolution of the cosmic web from redshift, $z = 2$, to present time, within the framework of the NEXUS+ algorithm. This necessitates the introduction of new analysis tools optimally suited to describe the very intricate and hierarchical pattern that is the cosmic web. In particular, we characterising filaments (walls) in terms of their linear (surface) mass density, which is very good in capturing the evolution of these structures. At early times the cosmos is dominated by tenuous filaments and sheets, which, during subsequent evolution, merge together, such that the present day web is dominated by fewer, but much more massive, structures. We show also that voids are more naturally described in terms of their boundaries and not their centres. We illustrate this for void density profiles, which, when expressed as a function of the distance from void boundary, show a universal profile in good qualitative agreement with the theoretical shell-crossing framework of expanding underdense regions.

Keywords. large-scale structure of universe, dark matter

1. Introduction

On megaparsec scales the matter distribution of the Universe is not uniform, but it forms an intricate pattern which is known as the *Cosmic Web* (Bond, Kofman & Pogosyan 1996). This is the most salient feature of the anisotropic gravitational collapse of matter, the motor behind the formation of structure in the Universe. Identifying and characterising the cosmic web network, in both numerical simulations and observations, is very challenging due to the overwhelming complexity of the individual structures, their connectivity and their intrinsic multiscale nature. It is even more difficult to follow the time evolution of the cosmic web, since the dominant components and scales change rapidly with redshift. This necessitates the use of scale- and user-free methods that naturally adapt to the complex geometry of the web and that extract the maximum information available among the components of this network.

2. Simulation and methods

We follow the evolution of the cosmic web using the high resolution Millennium and Millennium-II dark matter simulations (Springel *et al.* 2005; Boylan-Kolchin *et al.* 2009), which describe the formation of structure in a periodic box of length 500 and 100 h^{-1} Mpc, respectively. We use the Delaunay Tessellation Field Estimator (Schaap & van de Weygaert 2000; van de Weygaert & Schaap 2009; Cautun & van de Weygaert 2011) to obtain continuous density and velocity fields. These are used as input for the NEXUS+ algorithm (Cautun, van de Weygaert & Jones 2013), which identifies the cosmic web

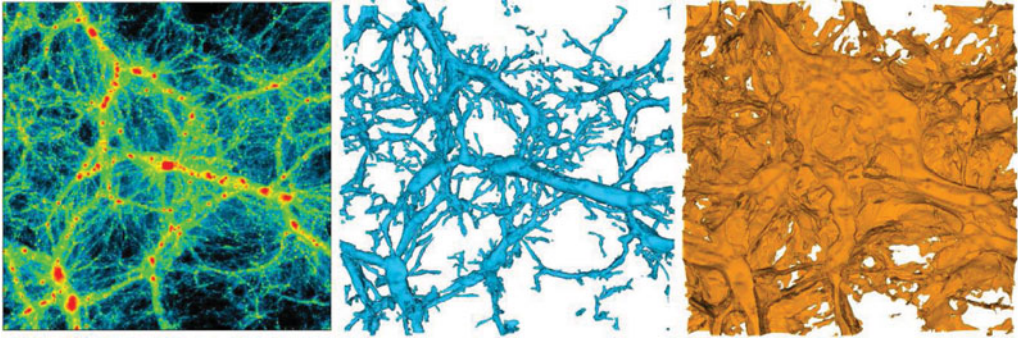


Figure 1. The complexity and multiscale character of the cosmic web as identified by NEXUS+. It shows the density field (left), the filaments (centre) and the walls (right) in a $100 \times 100 \times 10$ ($h^{-1}\text{Mpc}$)³ slice through the Millennium-II Simulation.

components. The outcome of applying NEXUS+ to the density field is illustrated in Fig. 1. Based on the Multiscale Morphology Filter (MMF) method of Aragón-Calvo *et al.* (2007b), we developed NEXUS+, and its sister method, NEXUS, to use a multitude of tracer fields for classifying the cosmic web environments, from density, to tidal, velocity shear and velocity divergence fields. In addition, NEXUS and NEXUS+ have the unique feature of employing natural and self-consistent criteria for identifying the cosmic web, in contrast to the less clear percolation threshold criteria used in MMF. These approaches are optimally suited for identifying the morphological environments since these methods are multiscale, parameter-free and designed to fully account for the anisotropic nature of gravitational collapse.

In particular, NEXUS+ uses the mass distribution, as traced by the density field, to identify clusters, filaments, walls and voids. The dominant morphological signal is extracted from a 4-dimensional scale-space representation of the matter distribution. The fourth dimension is constructed by filtering the logarithm of the density with a Gaussian kernel, for a range of smoothing scales. The environments are classified on the basis of the dominant local morphological signature of the filtered density field.

For this study, NEXUS+ has two main advantages. Firstly, it determines in a self-consistent way all the different morphological components. And, secondly, the multiscale character of the method make it ideal not only for identifying both prominent and tenuous environments, but also for studying the time evolution of the cosmic web without having to choose a user-defined scale.

3. The evolution of the cosmic web

Fig. 2 shows the evolution of filamentary environments starting with a redshift of $z = 1.9$ down to the present time. At early times, the filaments form a complex network that pervades most of the cosmic volume, with the exception of the most underdense regions. While the network has a few thick structures, it is dominated by small scale filaments. These thin filaments seem to be packed much more tightly close to prominent structures, suggesting that overdense regions have a higher richness of filaments. By $z = 1$, we find that most of the tenuous structures have disappeared and that we can more easily see the pronounced filaments. Going forward in time, to $z = 0.5$ and 0, we find that the evolution of the cosmic web significantly slows down, with only minor changes after $z = 0.5$. Though not shown, a similar evolution can be seen for the wall network too. For a more in depth analysis see Cautun *et al.* (2014).

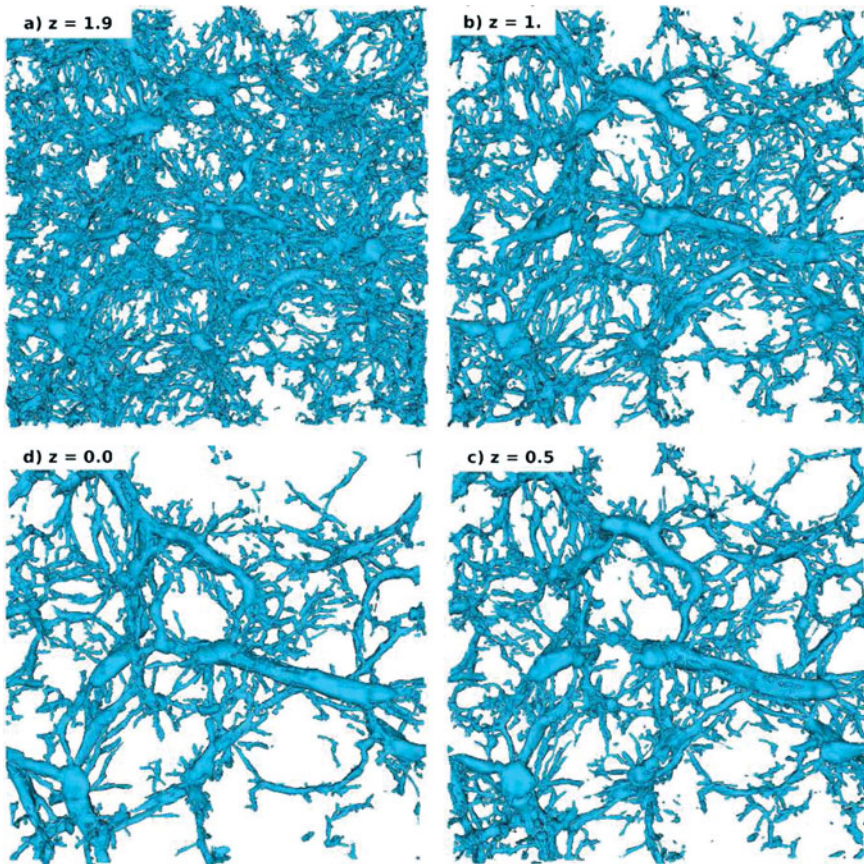


Figure 2. The evolution of the filamentary network as identified by NEXUS+ in a $100 \times 100 \times 10$ $(h^{-1}\text{Mpc})^3$ slice through the Millennium-II Simulation.

3.1. The mass distribution along filaments and walls

One of the most widely employed methods to study the cosmic web properties involve the use of global properties, like mass and volume filling fraction of each component (e.g. Aragón-Calvo *et al.* 2007b; Hahn *et al.* 2007; Forero-Romero *et al.* 2009). When applied to our study, such an approach leads to the results presented in top row of Fig. 3. For example, it shows that the volume occupied by filaments decreases since high redshift, probably due to the merging of the thin and tenuous filaments with the more prominent structures. But, more importantly, such a simple analysis cannot characterise the complex evolution seen in Fig. 2. For example, it cannot tell which components, tenuous or prominent, contained the most mass and how this mass distribution evolves in time. To do so, one needs a more complex analysis framework that takes into account the geometry of the various cosmic components.

Such a framework has been introduced in Cautun *et al.* (2014, see also Aragón-Calvo, van de Weygaert & Jones 2010) and takes advantage that, to a first approximation, filaments and walls can be seen as 1-dimensional lines and 2-dimensional surfaces, respectively. These represent the spine of filaments and the central plane of sheets; and can be computed using the techniques described in Aragón-Calvo, van de Weygaert & Jones (2010) and Cautun *et al.* (2014). This reduces the complex filamentary network to a simpler distribution of interconnected curves, with all the mass and halo distribution

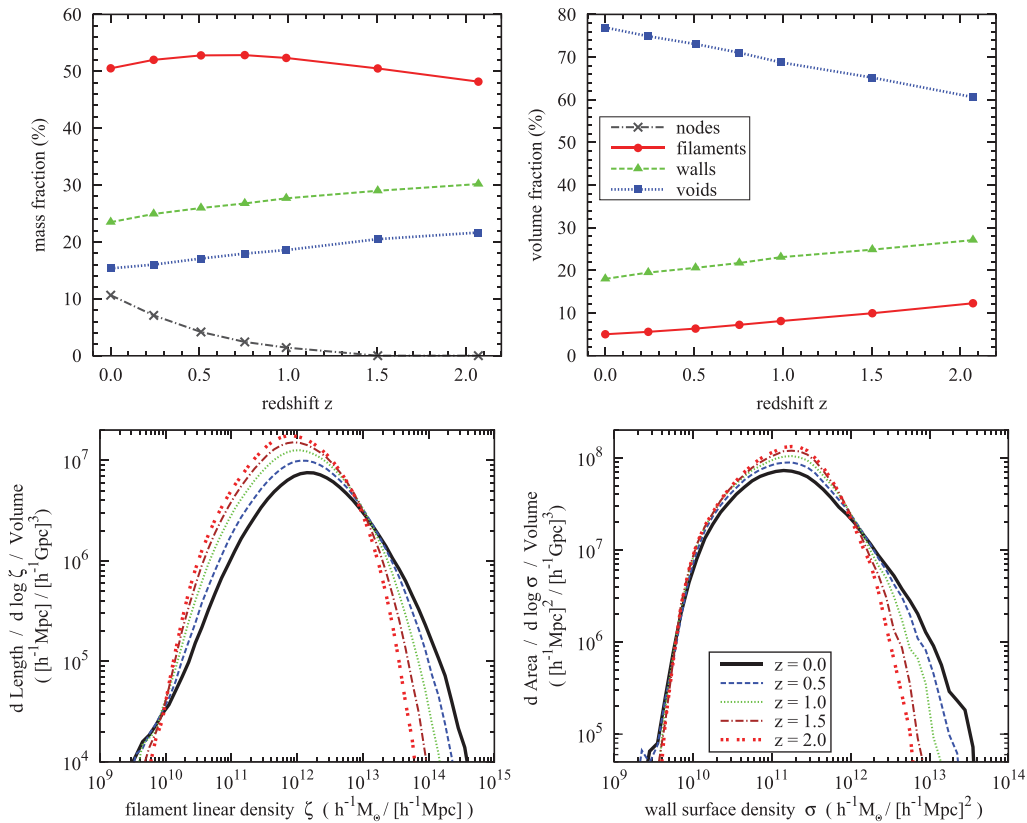


Figure 3. *Top row:* the time evolution of the mass and volume fraction in each cosmic web environment. *Bottom row:* the distribution of linear mass density of filaments (left) and the surface mass density of walls (right) at different redshifts.

of the filament compressed to its spine. Following this, one can move along the resulting curves and compute local quantities, like the mean linear density and the mean diameter of filaments (for details see Cautun *et al.* 2014).

The bottom-left panel of Fig. 3 show the results of such an analysis. It gives the length of filaments, per unit volume, that have a given linear mass density, when measured within a window of $2 h^{-1}\text{Mpc}$. The figure shows that there are few very low or very high mass filaments and that most of the length of the filamentary network is given by segments with linear densities of $\sim 10^{12} M_{\odot}/\text{Mpc}$. This distribution evolves in time, to show that segments with high mass become more common at late times, while at the same time there are fewer low mass segments. Even more telling, is the shift to the right in the peak of the distribution, showing that time evolution leads to an increase in the mass of the typical filament segment.

In contrast to filaments, the typical sheet regions become less massive at present time, as shown in bottom-right panel of Fig. 3. The decrease in wall surface density is seen as the shift in the peak of the distribution towards lower σ_{wall} values at later times. It shows that the decrease in the mass fraction of walls seen in the top-left panel takes place via two processes. First, as we just argued, typical sheet stretches become less massive. And secondly, the extent of the wall network reduces at later times, as seen in the decreasing peak values of the σ_{wall} distribution.

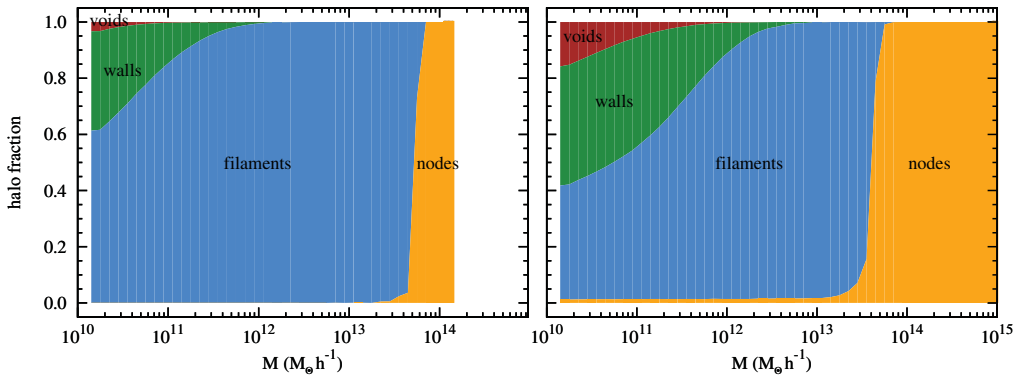


Figure 4. The fraction of haloes in each cosmic web environment as a function of halo mass. We show results for redshift, $z = 2$ (left), and for the present time (right).

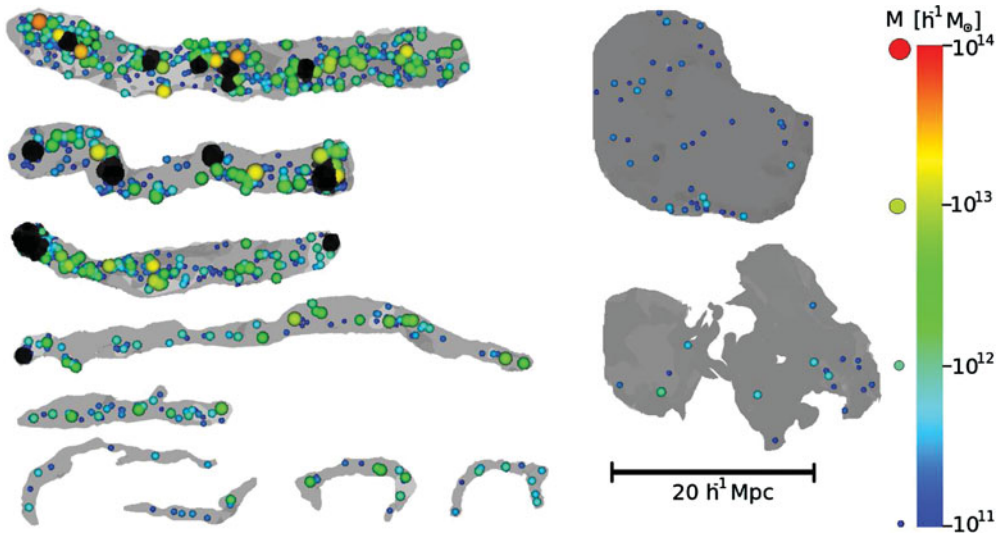


Figure 5. The haloes populating a few typical cosmic web filaments (left) and walls (right). The black points show haloes found in node environments.

3.2. The halo distribution among the web environments

The distribution of haloes across web environments plays a key role. First, the morphology of the cosmic web determines the preferential directions of accretion and thus influences the shape and angular momentum of haloes, inducing large scale alignments (e.g. Aragón-Calvo *et al.* 2007a; Hahn *et al.* 2007). And secondly, to identify and study the cosmic web in observations one makes use of galaxies, which are hosted in haloes. So knowing how haloes populate the morphological components is crucial to understand the web environments seen in observations. To this end, we show in Fig. 4 the distribution of haloes in the cosmic web at both $z = 2$ and 0. The figure shows a clear segregation of haloes across environments, with the most massive ones living in nodes and prominent filaments. Walls typically host $\sim 10^{12} h^{-1} M_{\odot}$ and lower mass objects, while void regions are populated with even lower mass haloes.

More interestingly, the halo population varies not only with environment, but also between structures with similar morphological features. This is shown in the left panel of Fig. 5, where we illustrate the haloes found in several filamentary branches. From top

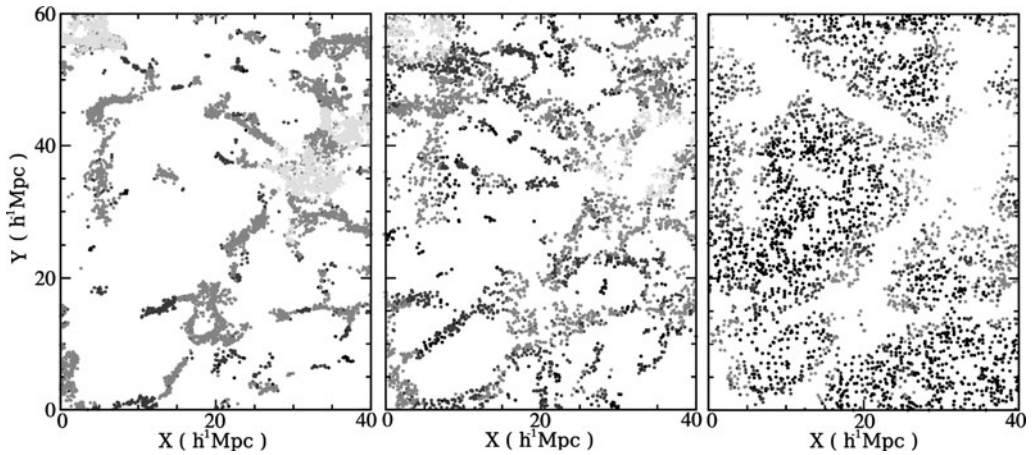


Figure 6. The mass transport across the web components. It shows dark matter particles identified at $z = 2$ as part of filaments (left), walls (centre) and voids (right). These particles are coloured according to their web classification at $z = 0$: node (light-grey), filament (grey), wall (dark-grey) and void (black).

to bottom, we show progressively less prominent filamentary branches, with the bottom most ones corresponding to filaments found in voids. The panel shows a clear trend of the halo distribution with filament properties. Thicker filaments, which are typically outstretched between cluster pairs, are populated with more massive haloes which are also more tightly packed together. In contrast, haloes in tenuous filaments are typically low mass, similar to the ones in walls, and are widely spaced apart.

Fig. 5 illustrates that while prominent filaments are easy to find observationally, since they host many bright galaxies, detecting more tenuous structures presents many observational challenges, given that these systems are mostly inhabited by low luminosity galaxies far apart. Thus, such tenuous objects are not conspicuous features in the spatial distribution of galaxies. The configuration of three aligned galaxies inside a void found by Beygu *et al.* (2013) is probably an example of such a thin filament (Rieder *et al.* 2013).

3.3. The mass transport across the cosmic web

By comparing the cosmic web identified at different redshifts, we can trace the path taken by the anisotropic collapse of matter and study the transport of mass among the different web environments. According to the gravitational instability theory, the matter distribution follows a well defined path, with mass flowing from voids into sheets, from sheets into filaments and only in the last step into the cosmic nodes. We illustrate this with the help of Fig. 6 that shows the dark matter particles in a thin $2 h^{-1} \text{Mpc}$ slice at redshift $z = 2$. Each panel gives the particles identified as part of filaments, walls and voids at $z = 2$, with the particles coloured according to the environments they are found in at the present time.

Fig. 6 shows some of the most important characteristics of the mass transport across the cosmic web, with these conclusions supported by a more in-depth and quantitative analysis of (Cautun *et al.* 2014). Among others, it shows that nodes form at the intersections of the filamentary network and that most of the mass in them has been accreted from regions that correspond to $z = 2$ filaments. For filaments, most of the mass found in these objects at $z = 2$ is also found in filaments at present time. In contrast, walls loose more than half of their $z = 2$ mass to mostly filaments, with the rest remaining in walls. And finally, voids also loose around half of their $z = 2$ mass, which flows into walls

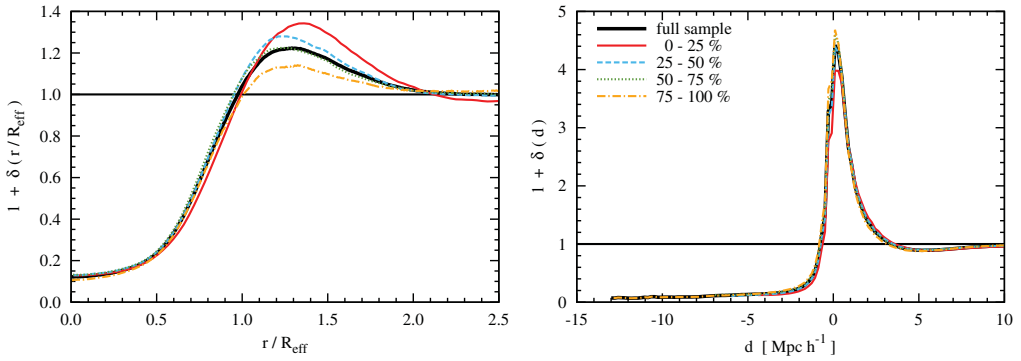


Figure 7. The density profile, $1 + \delta$, of voids for the full population and for subsamples split according to the volume of the void, from small to large. The left panel show the spherical profile of voids. The right panel shows the void profile as a function of the distance from the void boundary. We use the convention that negative d values correspond to the inside of voids, while positive ones correspond to the profile outside the void.

and filaments. In addition, Fig. 6 illustrates some of the limitations of the analysis. A small fraction of $z = 2$ filaments and walls are identified as present day walls and voids, respectively. This is restricted to minor filaments and walls and it is due to the difficulty of identifying such tenuous structures, especially across multiple time steps.

4. A natural void profile

The filaments and walls are not the only ones that have complex shapes and morphologies. Voids have it too. The simple picture of an expanding underdensity in a uniform background suggests that voids become more spherical as they evolve (Icke 1984; Sheth & van de Weygaert 2004). But in reality, voids are not isolated and this simple picture does not hold. There are two major factors that affect the evolution of voids. Firstly, since voids are nearly empty the force field that dictates their growth is dominated by external forces. This external tidal field determines the anisotropic expansion of voids and manifest itself as large scale correlations, over distances larger than $30 h^{-1} \text{Mpc}$, between the shapes of neighbouring voids (Platen, van de Weygaert & Jones 2008). Secondly, as voids expand, they encounter neighbouring voids resulting in a packing problem. These effects lead to voids that have highly aspherical and complex shapes (Platen, van de Weygaert, & Jones 2007; Platen, van de Weygaert & Jones 2008).

Up to now, voids were characterised in terms of spherical profiles with respect to the void’s center, typically the barycentre. Such a methodology results in the void profiles shown in the left panel of Fig. 7. These profiles have been rescaled following the prescription of Hamaus, Sutter & Wandelt (2014), where R_{eff} is the effective radius of the void corresponding to a spherical void with the same volume as the real object. This results in void profiles that are not fully universal and where one needs to follow a complex procedure to rescale voids of different sizes (for details see Hamaus, Sutter & Wandelt 2014; Nadathur *et al.* 2014). More worryingly, the resulting profile does not show the large density caustic at their boundary resulting from the shell-crossing of expanding underdense shells (Sheth & van de Weygaert 2004). So what is the reason for the mismatch?

The discrepancy between spherical void profiles and the shell-crossing predictions of Sheth & van de Weygaert (2004) arise from the fact that voids are very far from having a spherical shape. Thus, using spherically averaged profiles does not lead to an accurate description of void structure. In fact, it is easier to determine the void boundary, where

most of the mass and galaxies reside, than the void center, which is devoid of tracers. In fact, this very fact is the cornerstone of Watershed-based void finders (Platen, van de Weygaert, & Jones 2007; Neyrinck 2008). Thus, it is more natural to describe voids with respect to their boundary than with respect to their center.

It suggests that void profiles, and in general void properties, should also be computed with respect to the void boundary. For this, we define the boundary distance field $d_i(\mathbf{x})$ as the minimum distance between point \mathbf{x} and the boundary of void i . In addition, to distinguish between points inside and outside the void, we take the convention that $d_i(\mathbf{x})$ is negative if \mathbf{x} is inside void i and positive otherwise. The resulting density profiles, as a function of the void boundary distance, are shown in the right panel of Fig. 7. First, we find the sharp increase in the density profile at $d \sim 0$, corresponding to the caustic resulting from shell-crossing. And secondly, voids of different size show a much more similar and universal profile. This method gives a better and more natural description of not only density profiles, but also of void velocity profiles (Cautun *et al.* in prep.).

Acknowledgements

MC and CSF acknowledge the support of the ERC Advanced Investigator grant COS-MIWAY [grant number GA 267291]. RvdW acknowledges support by the John Templeton Foundation, grant [#FP05136-O].

References

- Aragón-Calvo, M. A., Jones, B. J. T., van de Weygaert, R., & van der Hulst, J. M., 2007a, *ApJ*, 655, L5
- Aragón-Calvo, M. A., Jones, B. J. T., van de Weygaert, R., & van der Hulst, J. M., 2007b, *A&A*, 474, 315
- Aragón-Calvo, M. A., van de Weygaert, R., & Jones, B. J. T., 2010, *MNRAS*, 408, 2163
- Beygu, B., Kreckel, K., van de Weygaert, R., van der Hulst, J. M., & van Gorkom, J. H., 2013, *AJ*, 145, 120
- Bond, J. R., Kofman, L., & Pogosyan, D., 1996, *Nature*, 380, 603
- Boylan-Kolchin, M., Springel, V., White, S. D. M., Jenkins, A., & Lemson G., 2009, *MNRAS*, 398, 1150
- Cautun, M., van de Weygaert, R., & Jones, B. J. T., 2013, *MNRAS*, 429, 1286
- Cautun, M., van de Weygaert, R., Jones, B. J. T., & Frenk, C. S., 2014, *MNRAS*, 441, 2923
- Cautun, M. C. & van de Weygaert, R., 2011, preprint arXiv:1105.0370
- Forero-Romero, J. E., Hoffman, Y., Gottlöber, S., Klypin, A., & Yepes G., 2009, *MNRAS*, 396, 1815
- Hahn, O., Carollo, C. M., Porciani, C., & Dekel, A., 2007, *MNRAS*, 375, 489
- Hamaus, N., Sutter, P. M., & Wandelt, B. D., 2014, *Physical Review Letters*, 112, 251302
- Icke, V., 1984, *MNRAS*, 206, 1P
- Nadathur, S., Hotchkiss, S., Diego, J. M., Iliev, I. T., Gottlöber S., Watson, W. A., & Yepes, G., 2014, preprints arXiv:1407.1295
- Neyrinck, M. C., 2008, *MNRAS*, 386, 2101
- Platen, E., van de Weygaert, R., & Jones, B. J. T., 2007, *MNRAS*, 380, 551
- Platen, E., van de Weygaert, R., & Jones, B. J. T., 2008, *MNRAS*, 387, 128
- Rieder, S., van de Weygaert, R., Cautun, M., Beygu, B., & Portegies Zwart S., 2013, *MNRAS*
- Schaap, W. E. & van de Weygaert, R., 2000, *A&A*, 363, L29
- Sheth, R. K. & van de Weygaert, R., 2004, *MNRAS*, 350, 517
- Springel, V. *et al.*, 2005, *Nature*, 435, 629
- van de Weygaert, R. & Schaap, W., 2009, in *Lecture Notes in Physics*, Berlin Springer Verlag, Vol. 665, *Data Analysis in Cosmology*, Martínez V. J., Saar E., Martínez-González E., Pons-Bordería M.-J., eds., pp. 291–413