

2019 - 2020 Settlement Program Client - Quick Facts

IRCC's Settlement Program enables permanent residents (PR), including refugees and protected persons, to contribute to the economic, social and cultural development needs of Canada.

The Settlement Program provides needs assessment and referrals, information and orientation services, language assessments and training, employment related services, and community connections services.

These services are funded through contribution agreements and delivered by third-party service provider organizations (SPOs).

Unique clients:

In 2019-20, nearly **548,000** clients accessed at least one settlement serviceⁱ, a **5.4%** increase in clients served in 2018-19 and a **20%** increase since 2017-18

Service Type	2019 - 2020 #	2018 - 2019 #	% change from previous year
Needs Assessment and Referrals	252,929	249,453	1.39%
Information and Orientation Services	448,663	422,674	6.15%
Employment Related Services	57,032	51,124	11.62%
Language Assessment	83,819	83,517	0.36%
Language Training	102,226	102,674	-0.44%
Community Connections	87,102	88,610	-1.70%
Support Services	131,881	134,164	-1.78%
Service Delivery Improvement	2,696	1,498	79.97%
Grand Total	547,801ⁱ	519,749ⁱ	5.40%

Settlement Program in 2019 - 2020...

Immigration Category:

- 41% Economic
 - 43% Principal Applicants
 - 57% Spouses and Dependants
- 30% Refugees
- 23% Sponsored Family
- 5% All other

Gender:

56% Female 44% Male

Age at Service:

80% 18 years and over
20% Under 18 years

Knowledge of official languagesⁱⁱ:

- 58% English
- 2% French
- 3% Both
- 33% Neither
- 4% Not stated

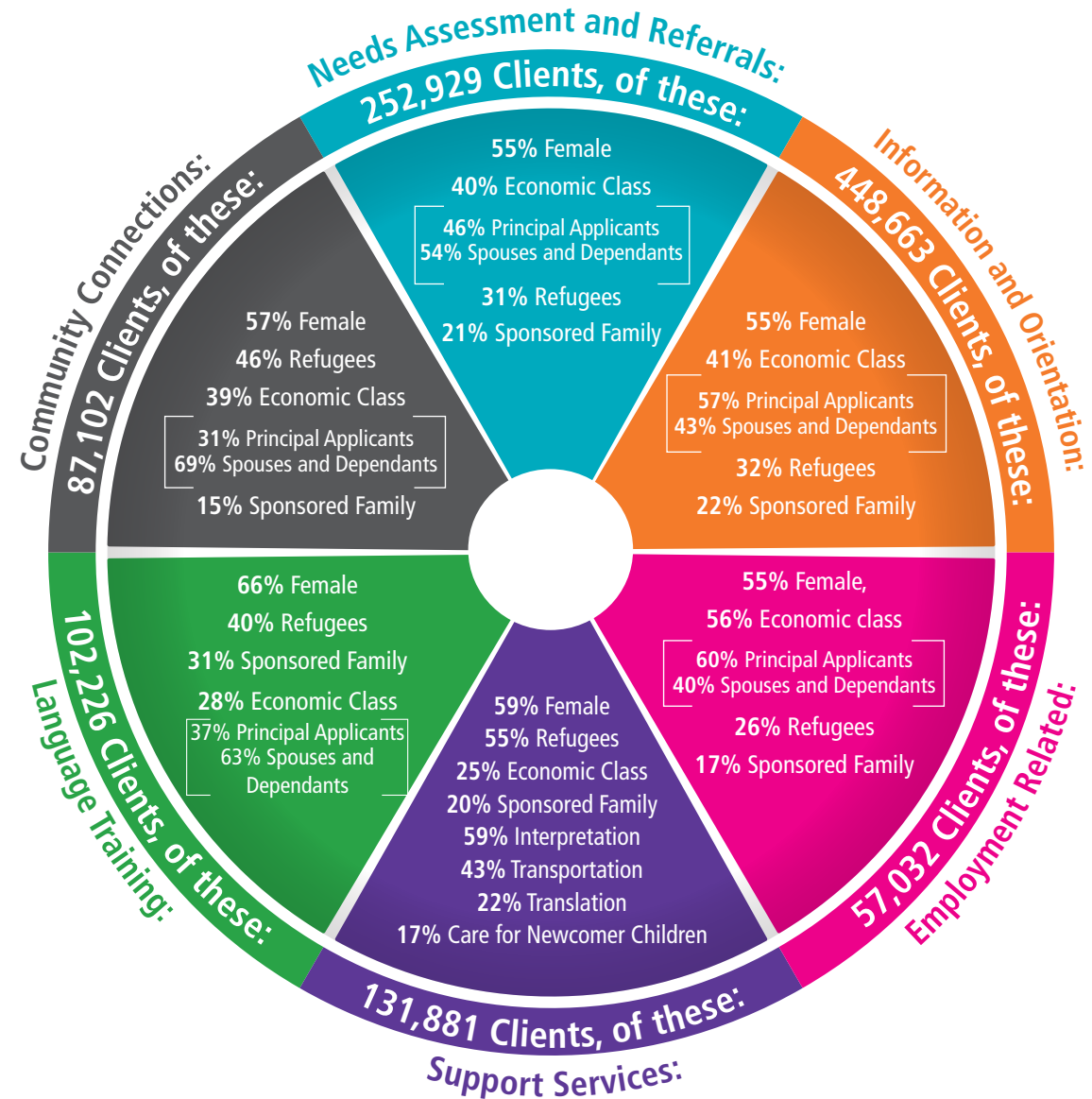
Country of Birth (Top 5):

- 15% India
- 12% China
- 8% Philippines
- 8% Syria
- 4% Iran

Language of Serviceⁱⁱⁱ:

- 73% English
- 12% Arabic
- 8% Mandarin
- 4% French

Unique Clients by Program Components^{iv}



Settlement Program across Canada 2019-2020

CANADA

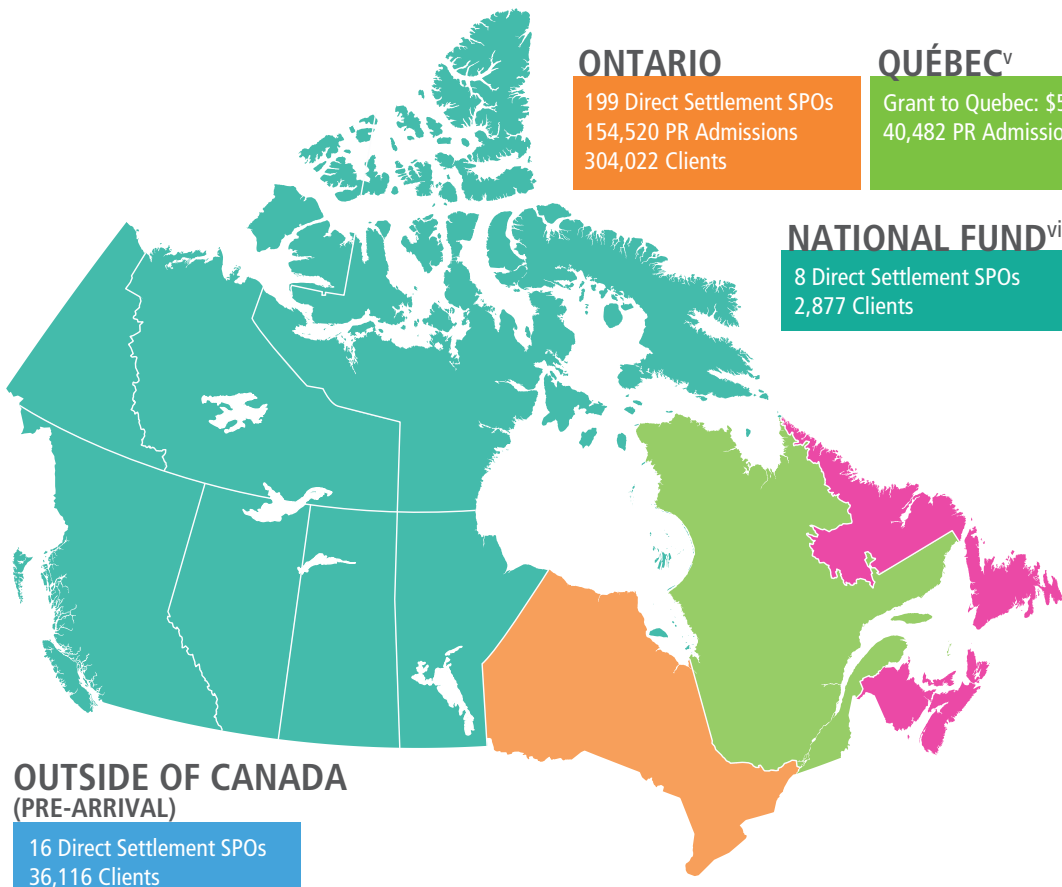
FUNDING ALLOCATIONS	Amount	Description
	\$698.7M	Funding allocated for investment in provinces and territories
	\$12M	National fund
	\$25.7M	Pre-Arrival fund
	\$33.7M	Service Delivery Improvement fund
	\$13.5M	Other settlement initiatives and pilots
	564	Settlement SPOs (direct and indirect)
	344,384	Permanent Resident (PR) admissions
	547,801	Unique Clients

WESTERN

British Columbia 79 Direct Settlement SPOs 52,474 PR Admissions 98,627 Clients	Manitoba 56 Direct Settlement SPOs 18,703 PR Admissions 29,885 Clients	Yukon 2 Direct Settlement SPOs 426 PR Admissions 327 Clients	Nunavut 1 Direct Settlement SPOs 45 PR Admissions 19 Clients
Alberta 55 Direct Settlement SPOs 43,647 PR Admissions 69,478 Clients	Saskatchewan 25 Direct Settlement SPOs 16,022 PR Admissions 20,011 Clients	Northwest Territories 5 Direct Settlement SPOs 190 PR Admissions 441 Clients	

EASTERN

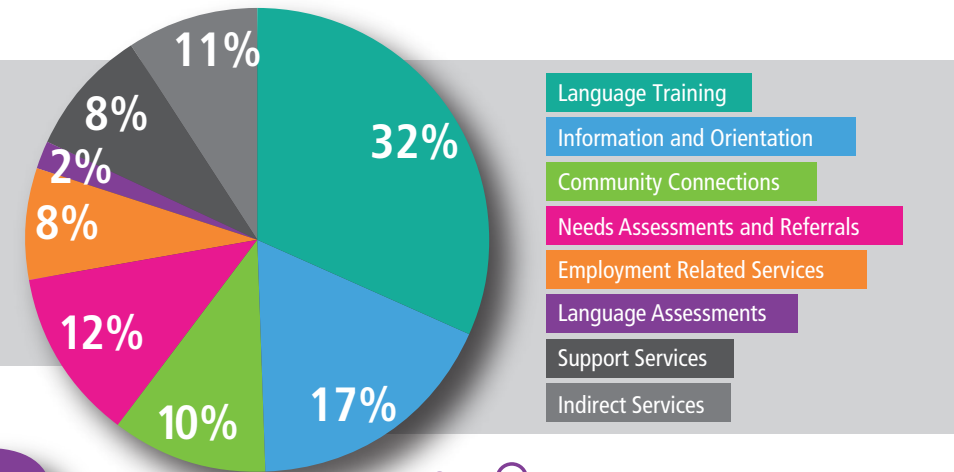
New Brunswick 16 Direct Settlement SPOs 6,027 PR Admissions 7,280 Clients	Prince Edward Island 5 Direct Settlement SPOs 2,397 PR Admissions 4,334 Clients
Nova Scotia 7 Direct Settlement SPOs 7,497 PR Admissions 8,883 Clients	Newfoundland & Labrador 3 Direct Settlement SPOs 1,941 PR Admissions 1,784 Clients



Expenditures^{vii}

In 2019-20, nearly \$774 million was spent delivering the Settlement Program, a 2% increase from 2018-19.

The largest proportion of settlement program spending was on **language training**, which accounted for nearly **one third** of expenditures in 2019-20.



Did you know that ...

open.canada.ca has statistics on the Settlement Program, Permanent Resident Admissions and other topics of interest such as refugees, that can be accessed right away!

About this fact sheet ...

Data Sources: IRCC Settlement Services and Permanent Resident Cubes, June 30, 2020 data.
Data caveats: Data reflects reporting by SPOs at the time of the tabulation. Reports, for the same period and produced at different times, may contain slightly different data. This occurs due to on-going data entry by SPOs, resulting in changes. IRCC is actively reviewing data quality and integrity.

Prepared by Settlement and Integration Policy Branch.

i Data includes pre-arrival services, domestic services and pilot programs
ii Self-reported
iii List is not exhaustive
iv Percentages may not add up to 100%

v The Canada-Quebec Accord provides the Government of Quebec with an annual grant, which covers settlement services, resettlement of refugees and administration
vi Excludes Pre-Arrival Settlement Provider Organizations

vii These figures exclude Quebec. Capital and administration expenditures are incorporated across all service components. Pre-arrival services expenditures are included in all service components with the exception of language training and language assessment, indirect and support services.