

# 2022 - 2023 Resettlement & Settlement Program Clients - Quick Facts

IRCC's Settlement Program enables permanent residents (PR), including refugees and protected persons, to contribute to the economic, social and cultural development needs of Canada. The Settlement Program provides needs and assets assessment and referrals, information and orientation services, language assessments and training, employment related services, and community connections services.

IRCC's Resettlement Assistance Program (RAP) provides immediate essential services and financial support for Government-Assisted Refugees upon their arrival in Canada. Privately Sponsored Refugees (PSR) and Blended Visa Office-Referred (BVOR) refugees are eligible for limited RAP services at ports of entry.

(Re)Settlement services are funded through contribution agreements and delivered by third-party service provider organizations (SPOs).

## Unique Clients:

In **2022-23, 611,709<sup>i</sup>** clients accessed at least one (re)settlement service, the largest number of clients since iCARE was implemented (2013-14), this is a **42%** increase from the previous year. This year's increase can be attributed to the lifting of COVID-19 restrictions and the recent influx of arrivals through the CUAET measures<sup>ii</sup>.

Service Type	2021-22 #	2022-23 #	% change from previous year
Needs and Assets Assessment and Referrals	201,096	295,269	47%
Information and Orientation Services	351,804	504,129	43%
Employment Related Services	45,362	68,825	52%
Language Assessment	49,582	104,431	111%
Language Training	76,476	100,325	31%
Community Connections	71,832	103,680	44%
Support Services	92,450	151,157	64%
Service Delivery Improvement	610	858	41%
Resettlement Assistance Program	17,976	42,166	135%
<b>Grand Total<sup>iii</sup></b>	<b>430,687</b>	<b>611,709</b>	<b>42%</b>

## Settlement Supports for Ukrainians:

78,659 Temporary Residents (TR) accessed a Settlement Service. These TR clients are eligible for services as a result of the CUAET measures<sup>i</sup> put in place by the department in 2022-23. As a result of these clients having TR status, they fall within the category of "other" in the breakdown of immigration categories for program services.

## (Re)Settlement Program in 2022 - 2023...

### Immigration Category:

32% Refugees  
31% Economic  
58% Spouses and Dependants  
42% Principal Applicants  
18% Sponsored Family  
19% All other

### Gender:

55% Female 43% Male

### Age at Service:

79% 18 years and over  
20% Under 18 years

### Knowledge of official languages<sup>iv</sup>:

52% English  
2% French  
3% Both  
29% Neither  
13% Not stated

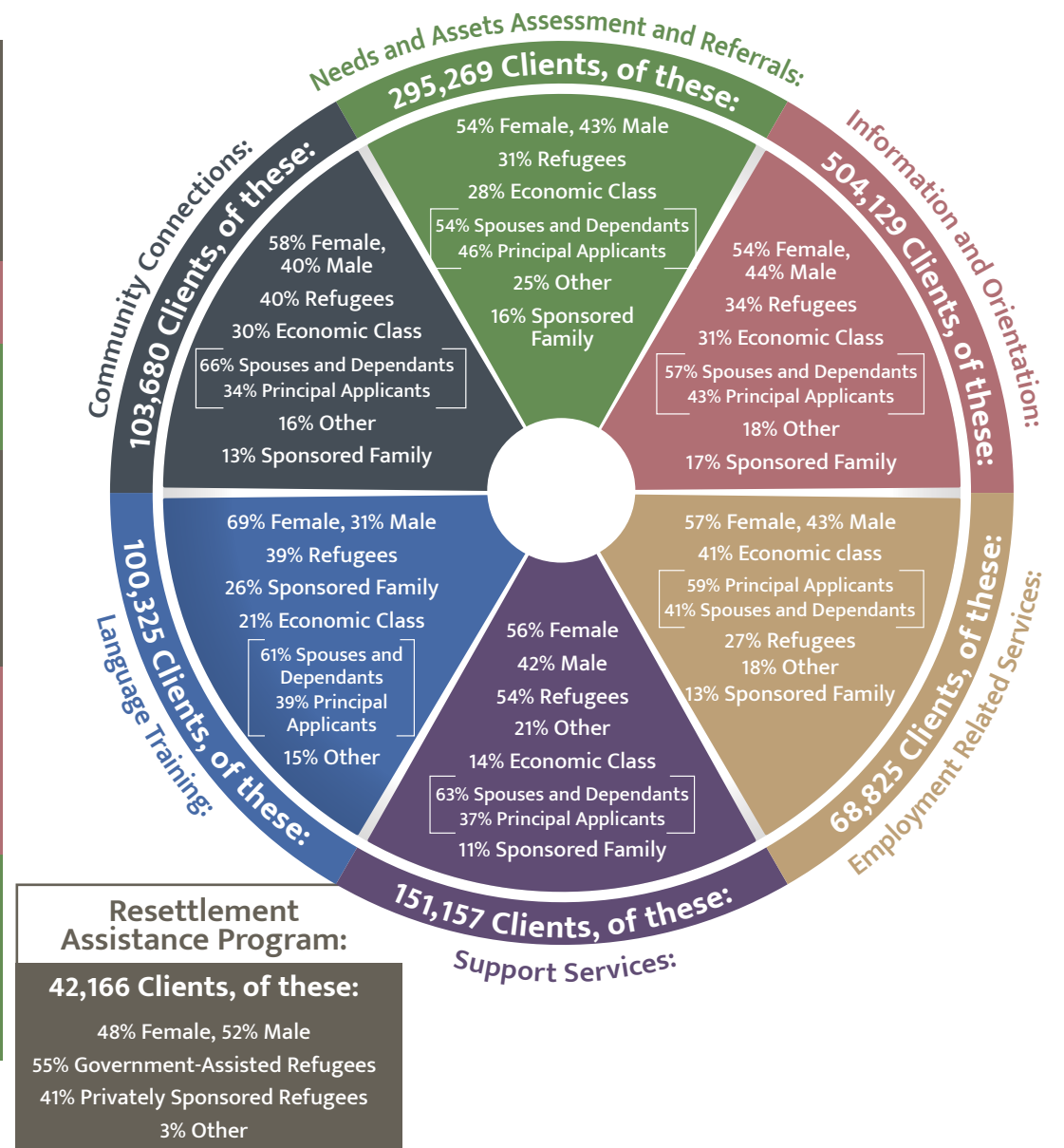
### Country of Birth (Top 5):

12% Ukraine  
11% India  
10% China  
6% Syria  
6% Afghanistan

### Language of Service<sup>v</sup>:

74% English  
10% Arabic  
8% Ukrainian  
6% Mandarin  
5% Dari  
5% French

## Unique Clients by Program Service<sup>vi</sup>



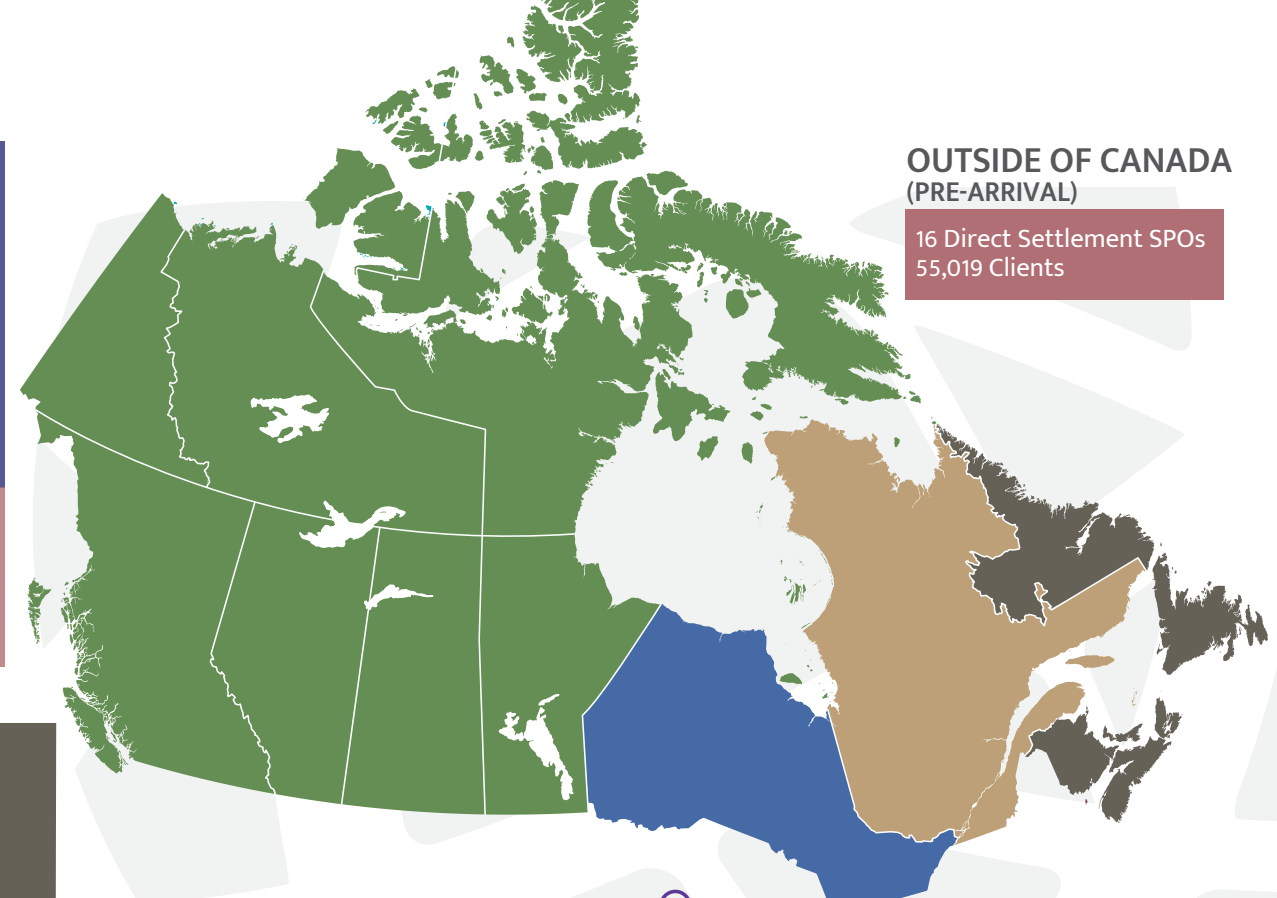
# (Re)Settlement Program across Canada 2022-2023

CANADA

<b>FUNDING ALLOCATIONS</b> <sup>viii</sup>	\$ 839.2 M	Settlement funding allocated for investment by provinces and territories <sup>vii</sup>
	\$20 M	National fund
	\$28 M	Pre-Arrival fund
	\$36.3 M	Service Delivery Improvement fund (SDI)
	\$93.5 M	Other settlement initiatives and pilots
\$585.5 M	Resettlement Assistance Program funding, including Income Support	
#	578	Settlement SPOs (direct, indirect and grants)
	40	Direct Resettlement Assistance Program (RAP) SPOs
	469,257	Permanent Resident (PR) admissions
	611,709	(Re)settlement Clients

## OUTSIDE OF CANADA (PRE-ARRIVAL)

16 Direct Settlement SPOs  
55,019 Clients



## WESTERN

<b>British Columbia</b> 81 Direct Settlement SPOs 6 RAP SPOs 64,984 PR Admissions 110,604 Clients	<b>Yukon</b> 2 Direct Settlement SPOs 628 PR Admissions 439 Clients
<b>Alberta</b> 57 Direct Settlement SPOs 6 RAP SPOs 53,977 PR Admissions 85,862 Clients	<b>Northwest Territories</b> 4 Direct Settlement SPOs 279 PR Admissions 228 Clients
<b>Manitoba</b> 45 Direct Settlement SPOs 3 RAP SPOs 25,362 PR Admissions 36,847 Clients	<b>Nunavut</b> 1 Direct Settlement SPOs 43 PR Admissions 49 Clients
<b>Saskatchewan</b> 25 Direct Settlement SPOs 4 RAP SPOs 24,904 PR Admissions 26,001 Clients	

## ONTARIO

217 Direct Settlement SPOs  
13 RAP SPOs  
195,148 PR Admissions  
327,732 Clients

## QUEBEC<sup>ix</sup>

Grant to Quebec: \$726.73M  
71,148 PR Admissions

## NATIONAL FUND<sup>x</sup>

10 Direct Settlement SPO  
4,776 Clients

## EASTERN

<b>New Brunswick</b> 19 Direct Settlement SPOs 5 RAP SPOs 11,221 PR Admissions 12,442 Clients
<b>Nova Scotia</b> 11 Direct Settlement SPOs 1 RAP SPO 13,342 PR Admissions 12,835 Clients
<b>Prince Edward Island</b> 6 Direct Settlement SPOs 1 RAP SPO 3,290 PR Admissions 4,817 Clients
<b>Newfoundland &amp; Labrador</b> 7 Direct Settlement SPOs 1 RAP SPO 4,916 PR Admissions 3,725 Clients

## Did you know that ...

Settlement and Integration Policy Branch has launched a new website about the IRCC settlement and resettlement program. You'll find resources to help you understand how (re)settlement programs are delivered along with our latest reports and research. [Check it out!](#)



## About this fact sheet ...

Data Sources: IRCC Settlement Services and Permanent Resident Cubes, June 30, 2023 data.  
Data caveats: Data reflects reporting by SPOs at the time of the tabulation. Reports, for the same period and produced at different times, may contain slightly different data. This occurs due to on-going data entry by SPOs, resulting in changes. IRCC is actively reviewing data quality and integrity. Permanent Resident data is preliminary and subject to change.

Prepared by Settlement and Integration Policy Branch.

i. Includes domestic and pre-arrival settlement, service delivery improvement, and resettlement assistance program.  
 ii. Canada-Ukraine authorization for emergency travel (CUAET). The CUAET measures allowed certain Temporary Residences eligibility to settlement services (3.7 Eligible clients: <https://www.canada.ca/en/immigration-refugees-citizenship/corporate/transparency/program-terms-conditions/settlement.html>)  
 iii. Since a client can receive multiple services, it is possible for the sum of clients by service received to be higher than the total count of unique clients. The total unique clients counts each client only once regardless of how many services they have received.  
 iv. Self-reported  
 v. List is not exhaustive  
 vi. Percentages may not add up to 100%. "Other" category includes Humanitarian category, Temporary Residence (CUAET clients) and Not Stated (Non PRs), "Refugees" includes Resettled Refugees and Protected Persons  
 vii. Funding allocations are calculated by Province/Territory for planning purposes and transferred to IRCC Regional Offices to establish and manage settlement program contribution agreements in their respective jurisdictions. Funding is not provided directly to Provincial/Territorial governments.  
 viii. This is preliminary allocations figure, actual expenditures may differ.  
 ix. Canada-Quebec Accord provides the Government of Quebec with an annual grant, which covers settlement services, resettlement of refugees and administration  
 x. Excludes Pre-Arrival Settlement Provider Organizations