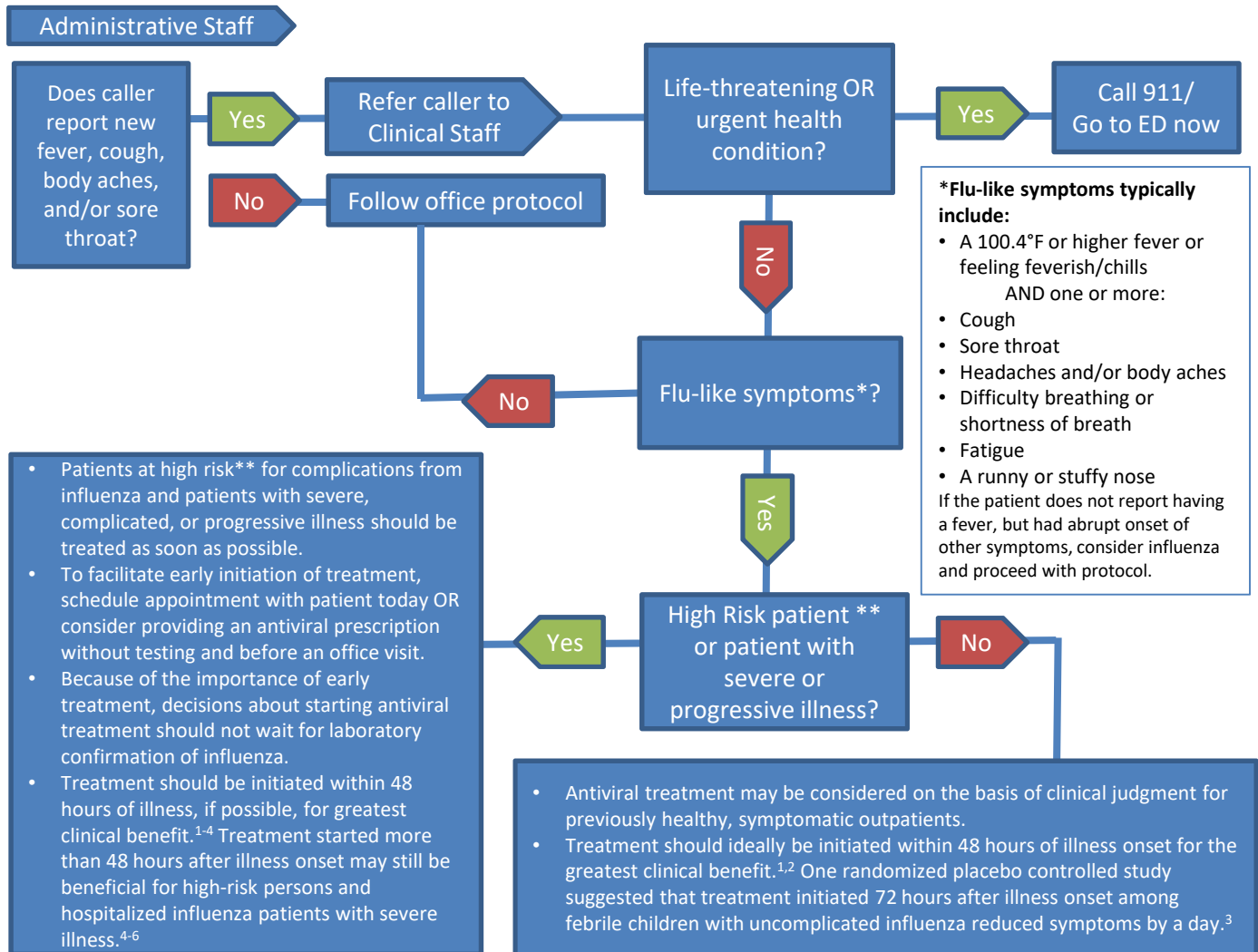


Medical Office Telephone Evaluation of Patients with Possible Influenza

The flow chart below is designed to be used when influenza viruses are circulating in the community. This tool may help medical office staff triage calls from patients with flu-like symptoms and identify when it might be appropriate to initiate antiviral treatment before an office visit. Patient triage or prescribing of prescription medicines should be done under the direction of a licensed physician or other licensed provider. For more information see: <http://www.cdc.gov/flu/professionals/antivirals/index.htm>



**High Risk Patients Include:

- Children younger than 2 years (although all children younger than 5 years are considered at higher risk for complications from influenza, the highest risk is for those younger than 2 years);
- Adults aged 65 years and older;
- Persons with chronic pulmonary (including asthma), cardiovascular (except hypertension alone), renal, hepatic, hematological (including sickle cell disease), and metabolic disorders (including diabetes mellitus), or neurologic and neurodevelopment conditions (including disorders of the brain, spinal cord, peripheral nerve, and muscle such as cerebral palsy, epilepsy [seizure disorders], stroke, intellectual disability [mental retardation], moderate to severe developmental delay, muscular dystrophy, or spinal cord injury);
- Persons with immunosuppression, including that caused by medications or by HIV infection;
- Women who are pregnant or postpartum (within 2 weeks after delivery);
- Persons aged younger than 19 years who are receiving long-term aspirin therapy;
- American Indians/Alaska Natives;
- Persons with extreme obesity (i.e., body-mass index is equal to or greater than 40); and
- Residents of nursing homes and other chronic-care facilities.

References:

1. Malosh RE, Martin ET, Heikkinen T, et al. Efficacy and Safety of Oseltamivir in Children: Systematic Review and Individual Patient Data Meta-analysis of Randomized Controlled Trials. *Clin Infect Dis.* 2017 Nov 23. doi: 10.1093/cid/cix1040. [Epub ahead of print]
2. Dobson J, Whitley RJ, Pocock S, et al. Oseltamivir treatment for influenza in adults: a meta-analysis of randomised controlled trials. *Lancet.* 2015 May 2;385(9979):1729-1737.
3. Fry AM, Goswami D, Nahar K, et al. Efficacy of oseltamivir treatment started within 5 days of symptom onset to reduce influenza illness duration and virus shedding in an urban setting in Bangladesh: a randomised placebo-controlled trial. *Lancet Infect Dis.* 2014; 14(2): 109-18.
4. Venkatesan S, Myles PR, Leonardi-Bee J, et al. Impact of Outpatient Neuraminidase Inhibitor Treatment in Patients Infected With Influenza A(H1N1)pdm09 at High Risk of Hospitalization: An Individual Participant Data Metaanalysis. *Clin Infect Dis.* 2017 May 15;64(10):1328-1334.
5. Muthuri SG, Venkatesan S, Myles PR, et al. Effectiveness of neuraminidase inhibitors in reducing mortality in patients admitted to hospital with influenza A H1N1pdm09 virus infection: a meta-analysis of individual participant data. *Lancet Respir Med.* 2014 May;2(5):395-404.
6. Hsu J, Santesso N, Mustafa R, et al. Antivirals for treatment of influenza: a systematic review and meta-analysis of observational studies. *Ann Intern Med.* 2012 Apr 3;156(7):512-24