

# News You Can Use

## An Introduction to Chicago Fed Activity Indexes



## The Brave-Butters-Kelley Indexes (BBKI)

### *Business Cycle Indexes and Monthly GDP Growth*

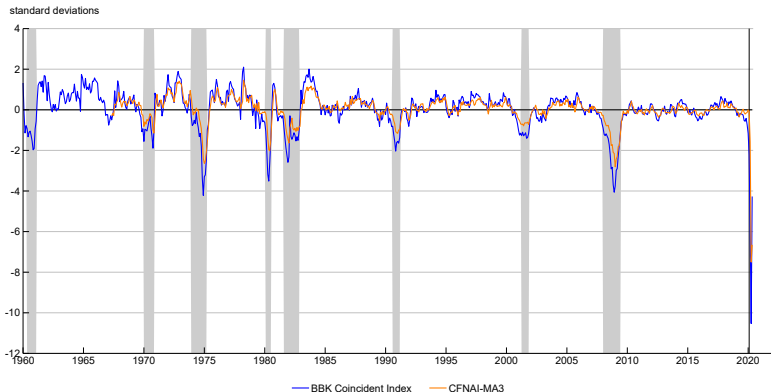
- A mixed-frequency collapsed dynamic factor analysis of U.S. GDP
- An application of "big data" in macroeconomics to
  - U.S. business cycles and
  - Monthly measurement of U.S. GDP growth
- Available monthly at [chicagofed.org/bbki](http://chicagofed.org/bbki)

For more information see:

- **Technical report**
- **A "big data" view of the U.S. economy: Introducing the Brave-Butters-Kelley Indexes**
- **A new "big data" index of U.S. economic activity**



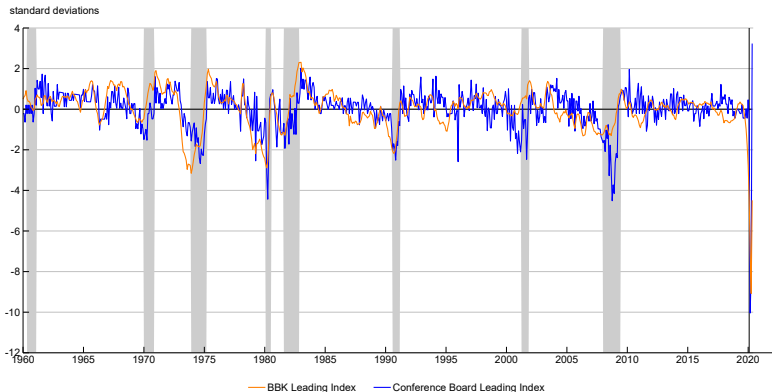
## BBK Coincident Index vs. CFNAI-MA3



- Long history based on 500 monthly indicators and quarterly GDP



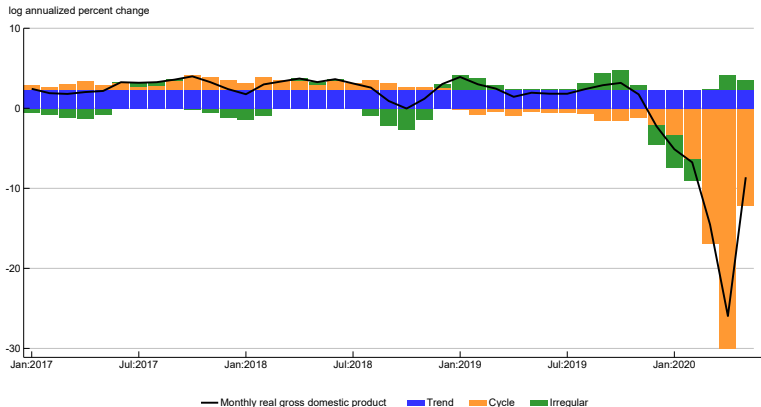
## BBK Leading Index vs. Conference Board Leading Economic Index



- New leading index with an ten-month lead on the business cycle



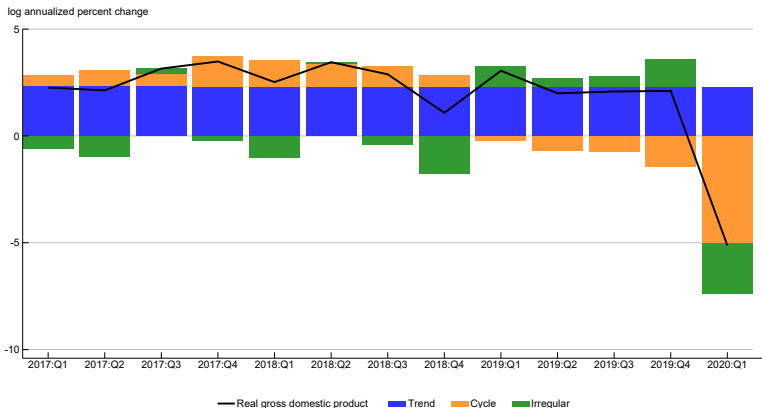
## Decomposition of BBK Monthly GDP Growth, 2017–20



- Decomposes GDP into persistent (Trend and Cycle) and short-lived (Irregular) components at monthly and quarterly frequencies



## Decomposition of U.S. real GDP growth, 2017-20



Additional information available at [chicagofed.org/research/data/index](https://chicagofed.org/research/data/index)

### Contacts:

Michael Adleman  
Media Relations  
Federal Reserve Bank of Chicago  
312-322-2934

Ross Cole  
Economic Research  
Federal Reserve Bank of Chicago  
[rcole@frbchi.org](mailto:rcole@frbchi.org)