

Madison, Wisconsin

CITY OF MADISON

CITY ENGINEERING DIVISION DEPARTMENT OF PUBLIC WORKS

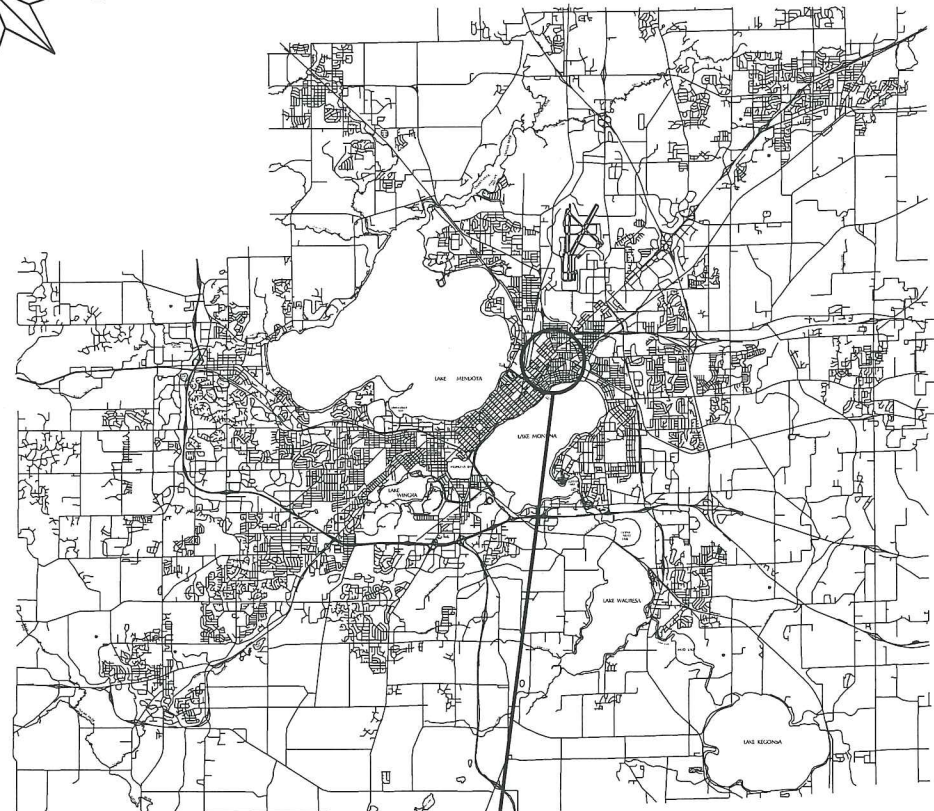
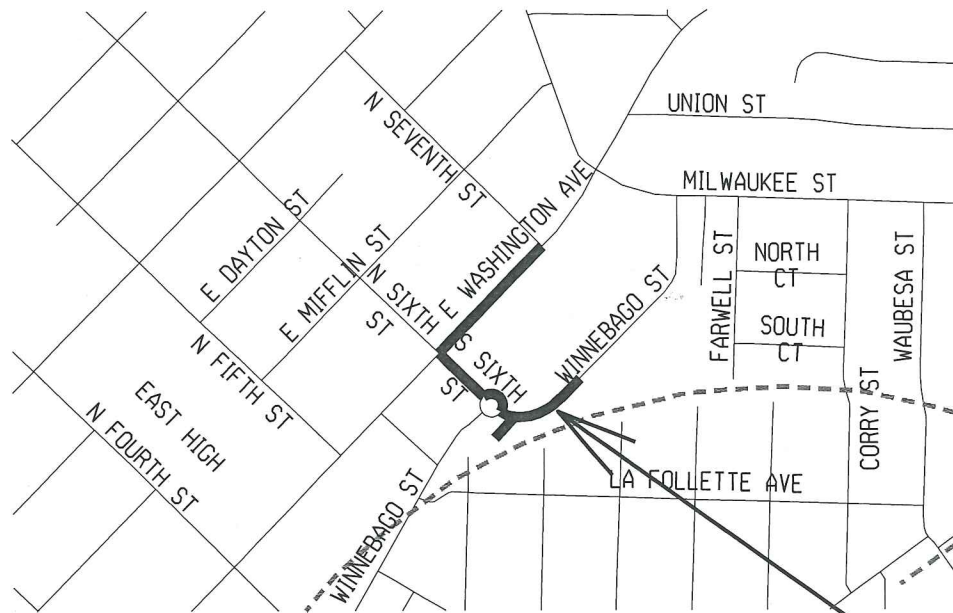
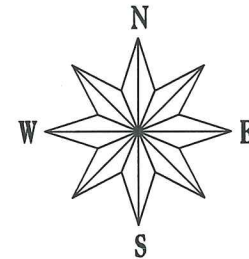
PLAN OF PROPOSED IMPROVEMENT

2404 WINNEBAGO STREET – UW HEALTH AT UNION CORNERS

CITY PROJECT NO. 10519
CITY CONTRACT NO. 2406
MUNIS NO. 10519

INDEX OF SHEETS

SHEET NO.	TITLE
1	DETAILS
DI-D2	DETAILS
E1	ELECTRICAL PLAN
P1	STREET PLAN: EAST WASHINGTON AVE.
P2	STREET PLAN: SIXTH ST. & WINNEBAGO ST.
P3	STREET PLAN: WINNEBAGO ST. DRIVEWAY
P4	PATH PLAN & PROFILE: UNION CORNERS PATH CONNECTION
L1	LANDSCAPING PLAN
U1	UTILITY PLAN: SIXTH ST. & WINNEBAGO ST.
U2	UTILITY PLAN: WINNEBAGO ST. DRIVEWAY
X1	CROSS SECTIONS: UNION CORNERS PATH CONNECTION



PROJECT
LOCATION

PUBLIC IMPROVEMENT PROJECT
APPROVED

FEBRUARY 3, 2015

BY THE COMMON COUNCIL
OF MADISON, WISCONSIN

PUBLIC IMPROVEMENT DESIGN
APPROVED BY:

[Signature] 7/30/15
City Engineer Date

STREET
DESIGNED BY:



STORM SEWER
DESIGNED BY:



ELECTRICAL
DESIGNED BY:



SANITARY SEWER
DESIGNED BY:

7/29/15 *[Signature]*
NO PUBLIC SEWER MAIN
LATERAL ONLY PLAN

PLOT SCALE:

PLOT NAME:

REV. DATE:

ORIGINATOR: CITY OF MADISON, STREETS DIVISION

THE LOCATION AND INFORMATION FOR PROPOSED NEW TREES, IN THE PUBLIC RIGHT OF WAY OR ON PUBLIC LANDS ARE APPROXIMATE AND ARE SHOWN FOR REFERENCE ONLY. THE LOCATIONS, SPECIFICATIONS AND PLANTING METHODS OF ALL PROPOSED NEW OR REPLACEMENT TREES IN THE PUBLIC RIGHT OF WAY OR ON PUBLIC LANDS SHALL BE APPROVED BY THE CITY FORESTER PRIOR TO INSTALLATION.

NO TREES IN THE RIGHT OF WAY OR ON PUBLIC LANDS SHALL BE TRIMMED, PRUNED, REMOVED OR ADVERSELY AFFECTED IN ANY WAY UNTIL THE DEVELOPER HAS RECEIVED WRITTEN PERMISSION FROM THE CITY ENGINEER OR CITY FORESTER. SAID WRITTEN PERMISSION SHALL INCLUDE LANGUAGE INDICATING THAT SECTION 10.101 OF THE MADISON GENERAL ORDINANCES AND ADMINISTRATIVE PROCEDURE MEMORANDUM NO. 6-2, REFERING TO NOTIFICATION OF PROPERTY OCCUPANTS AND/OR OWNERS, HAS BEEN COMPLIED WITH.

THE DEVELOPER/CONTRACTOR SHALL SUBMIT A TRAFFIC CONTROL PLAN TO CITY OF MADISON TRAFFIC ENGINEERING DIVISION A MINIMUM OF 10 WORKING DAYS PRIOR TO THE ANTICIPATED START OF WORK ON ELDERBERRY ROAD. WORK MAY NOT PROCEED ON ELDERBERRY ROAD UNTIL THERE IS AN APPROVED TRAFFIC CONTROL PLAN OBTAINED FROM CITY TRAFFIC ENGINEERING. CONTACT TOM MOHR VIA EMAIL AT TMOHR@CITYOFMADISON.COM

THE CONTRACTOR SHALL NOT REMOVE THE TRAFFIC SIGNS. FOR REMOVAL OR REPLACEMENT OF TRAFFIC AND PARKING SIGNS, CONTACT THE CITY OF MADISON TRAFFIC ENGINEERING FIELD OPERATION, 1120 SAYLE STREET, 266-4767, 8:00 A.M. TO 4:00 P.M., A MINIMUM OF THREE (3) WORKING DAYS IN ADVANCE OF WHEN ANY EXISTING SIGNS NEED TO BE REMOVED. THIS SERVICE IS PROVIDED FREE OF CHARGE. IF THE CONTRACTOR REMOVES THE SIGNS, THE CONTRACTOR WILL BE BILLED FOR THE REINSTALLATION OF, AND ANY DAMAGE TO, THE SIGNING EQUIPMENT.

ALL PAVEMENT WITHIN THE SIXTH STREET AND WINNEBAGO STREET RIGHTS-OF-WAY SHALL BE TYPE C PAVEMENT PER STANDARD DETAIL DRAWING 4.02.

ALL PAVEMENT WITHIN THE EAST WASHINGTON AVENUE RIGHT-OF-WAY SHALL BE 10" DOWELED CONCRETE PAVEMENT.

UNDERDRAINS SHALL BE INSTALLED, PER STANDARD DETAIL DRAWING 4.05 FOR 75' ON EACH SIDE OF THE LOW POINT, OR TO THE NEAREST CURB HIGH POINT. ALL UNDERDRAIN SHALL BE WRAPPED.

ALL GUTTERS SHALL DRAIN WITH A MINIMUM GRADES OF 0.5% TOWARD STORM SEWER INLETS.

ALL DITCHES SHALL DRAIN WITH A MINIMUM GRADES OF 0.5%

THE CROSS SLOPE OF SIDEWALKS AND BARRIER FREE SIDEWALK CURB RAMPS SHALL BE 1.5%. THE LONGITUDINAL GRADE OF BARRIER FREE SIDEWALK CURB RAMPS SHALL NOT EXCEED 8.33%. ALL SIDEWALK RAMPS SHALL BE CONSTRUCTED ACCORDING TO S.D.D. 3.03. AT ALL OTHER LOCATIONS THE LONGITUDINAL GRADE OF SIDEWALKS SHALL NOT EXCEED 5.0 % OR THE ADJACENT STREET GRADE WHICHEVER IS GREATER NOR BE LESS THAN 0.5% AND SHALL DRAIN TOWARD STORM SEWER INLETS. SIDE SLOPES WITHIN TEN FEET OF A PUBLIC SIDEWALK SHALL NOT EXCEED 4:00:1. ALL SIDEWALK AND SIDEWALK RAMP ELEVATIONS AND GRADES SHALL BE FIELD VERIFIED AND SET TO COMPLY WITH THE CITY OF MADISON STANDARD SPECIFICATIONS AND THE A.D.A. GUIDELINES.

OBTAIN A PRINT OUT OF THE ALIGNMENT FROM THE CITY ENGINEER PRIOR TO STAKING THIS PROJECT.

CURB STATION AND OFFSETS SHALL BE TO THE FACE OF CURB UNLESS OTHERWISE INDICATED. CURB ELEVATIONS SHALL BE TO THE TOP OF CURB (OR EXTENDED TOP OF CURB FOR DRIVEWAYS OR RAMPS) UNLESS OTHERWISE INDICATED.

POWER POLES AND OTHER OBSTRUCTIONS SHALL BE MOVED TO PROVIDE 2 FEET MINIMUM OF CLEAR DISTANCE FROM ANY FACE OF CURB OR EDGE OF SIDEWALK.

ANY INFORMATION SHOWN ON THIS PLAN, WHICH IS NOT PART OF THIS PROJECT, IS PRELIMINARY AND NOT FOR CONSTRUCTION.

THERE MAY BE EXISTING UTILITIES OR OTHER FEATURES WHICH ARE EITHER NOT SHOWN OR SHOWN INCORRECTLY ON THIS PLAN. IT IS THE RESPONSIBILITY OF THE DEVELOPER TO LOCATE AND IDENTIFY ALL UTILITIES AND TOPOGRAPHY WHICH MAY AFFECT THE CONSTRUCTION OF THESE IMPROVEMENTS.

ALL PERMANENT SIGNING AND POSTING WILL BE DETERMINED AND PROVIDED BY THE TRAFFIC ENGINEERING DIVISION, FOLLOWING CONSTRUCTION OF THESE IMPROVEMENTS.

THE DEVELOPER SHALL PROVIDE, INSTALL AND MAINTAIN ALL STREET END BARRICADES, SIGNING AND TRAFFIC CONTROL, AS REQUIRED BY THE CITY TRAFFIC ENGINEER.

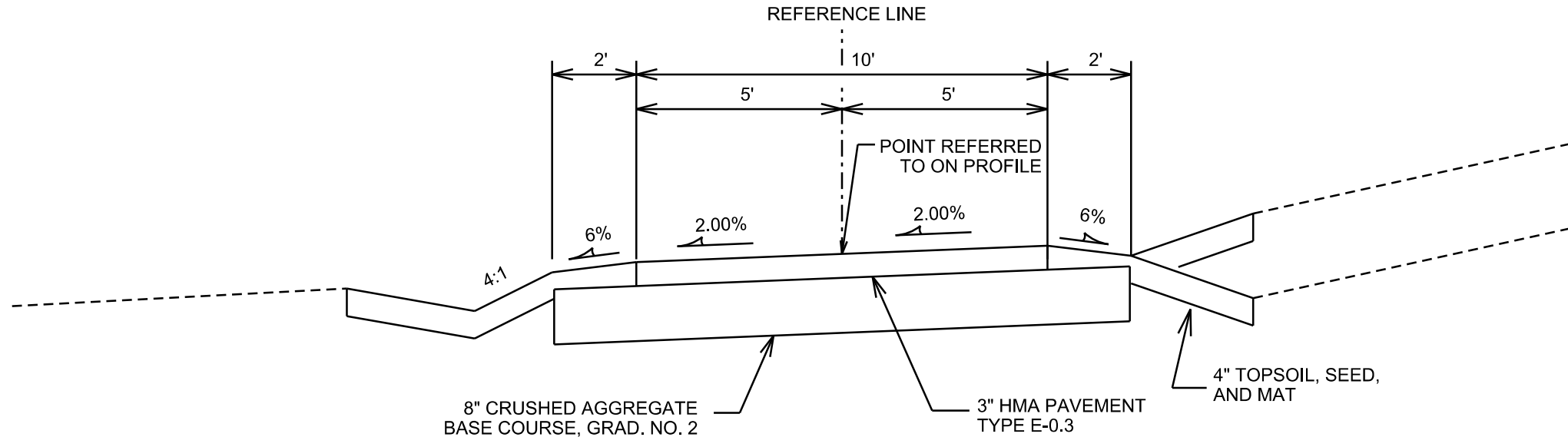
PAVEMENT SAWCUTS SHALL BE AS DIRECTED BY THE CITY CONSTRUCTION ENGINEER. SAWCUTS SHOWN ON THE PLAN ARE APPROXIMATE.

PLOT SCALE: _____

PLOT NAME: _____

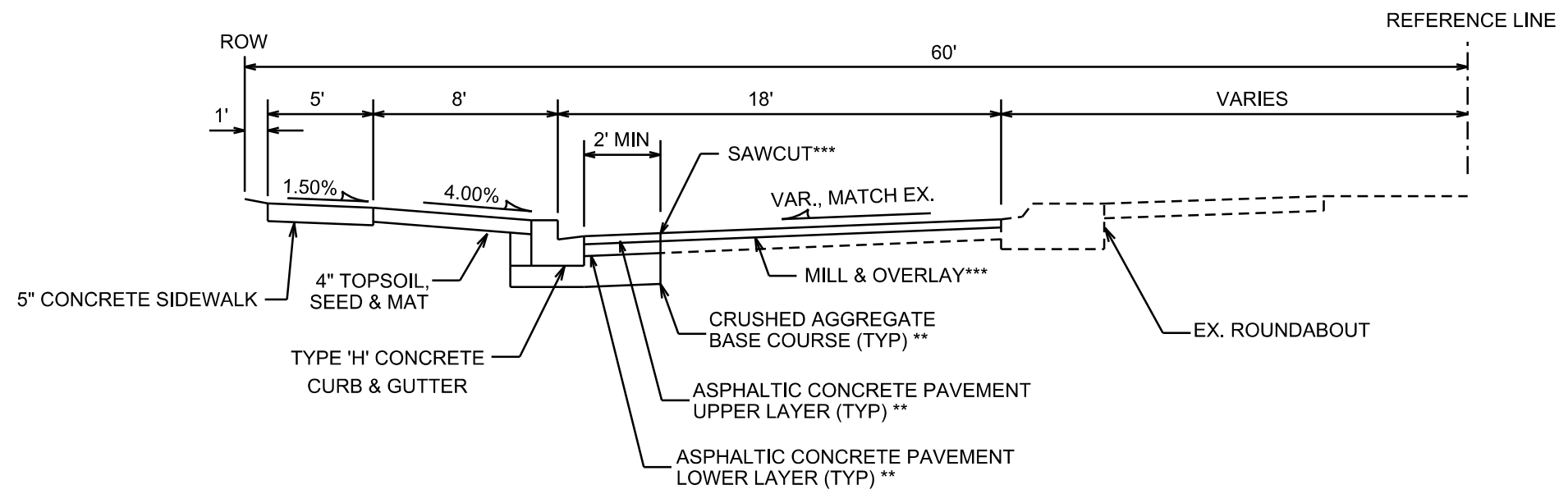
REV. DATE: _____

ORIGINATOR: CITY OF MADISON, STREETS DIVISION



TYPICAL SECTION

UNION CORNERS PATH CONNECTION
STA 02+89 TO STA 06+76



TYPICAL SECTION

SIXTH STREET & WINNEBAGO STREET
STA 113+20 TO STA 114+26

NOTES:

TYPICAL SECTIONS NOT TO SCALE

* SEE CROSS SECTIONS FOR SLOPES, OFFSETS AND ELEVATIONS.

** SIXTH STREET & WINNEBAGO STREET TO BE CONSTRUCTED AS TYPE 'C' PAVMENT PER CITY OF MADISON MINIMUM PAVEMENT DESIGN.

*** IF PAVEMENT EDGE CAN BE PRESERVED AT THE FLAG OF CURB, A 2' OFFSET SAWCUT AND MILL AND OVERLAY MAY NOT BE NECESSARY. FINAL DECISION AND LIMITS FOR ANY MILL AND OVERLAY WORK TO BE BY CONSTR. ENGINEER.

CITY OF MADISON MINIMUM PAVEMENT DESIGN

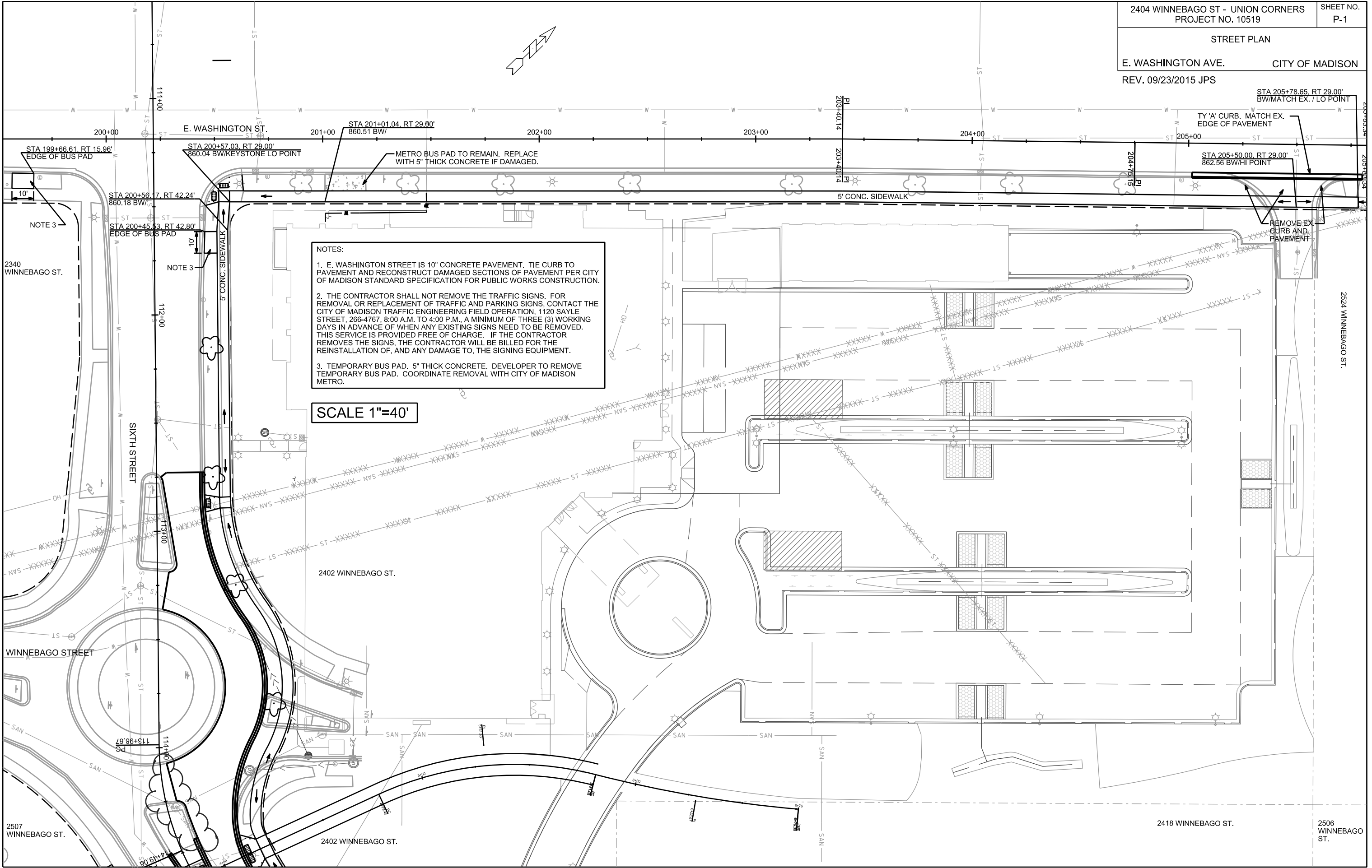
TYPE	CRUSHED AGG. BASE COURSE		ASPHALTIC CONCRETE PAVEMENT			
	LOWER LAYER	UPPER LAYER	LOWER LAYER		UPPER LAYER	
	GRADATION 1	GRADATION 2	TYPE	THICKNESS	TYPE	THICKNESS
A	6"	4"	E-0.3	1.75"	E-0.3	1.75"
B	6"	4"	E-1	2.25"	E-1	2"
C	6"	4"	E-3	3.25"	E-3	2"

PLOT SCALE: _____

PLOT NAME: _____

REV. DATE: _____

ORIGINATOR: CITY OF MADISON, STREETS DIVISION



NOTES:

1. E. WASHINGTON STREET IS 10" CONCRETE PAVEMENT. TIE CURB TO PAVEMENT AND RECONSTRUCT DAMAGED SECTIONS OF PAVEMENT PER CITY OF MADISON STANDARD SPECIFICATION FOR PUBLIC WORKS CONSTRUCTION.
2. THE CONTRACTOR SHALL NOT REMOVE THE TRAFFIC SIGNS. FOR REMOVAL OR REPLACEMENT OF TRAFFIC AND PARKING SIGNS, CONTACT THE CITY OF MADISON TRAFFIC ENGINEERING FIELD OPERATION, 1120 SAYLE STREET, 266-4767, 8:00 A.M. TO 4:00 P.M., A MINIMUM OF THREE (3) WORKING DAYS IN ADVANCE OF WHEN ANY EXISTING SIGNS NEED TO BE REMOVED. THIS SERVICE IS PROVIDED FREE OF CHARGE. IF THE CONTRACTOR REMOVES THE SIGNS, THE CONTRACTOR WILL BE BILLED FOR THE REINSTALLATION OF, AND ANY DAMAGE TO, THE SIGNING EQUIPMENT.
3. TEMPORARY BUS PAD. 5" THICK CONCRETE. DEVELOPER TO REMOVE TEMPORARY BUS PAD. COORDINATE REMOVAL WITH CITY OF MADISON METRO.

SCALE 1"=40'

PLOT SCALE: _____

PLOT NAME: _____

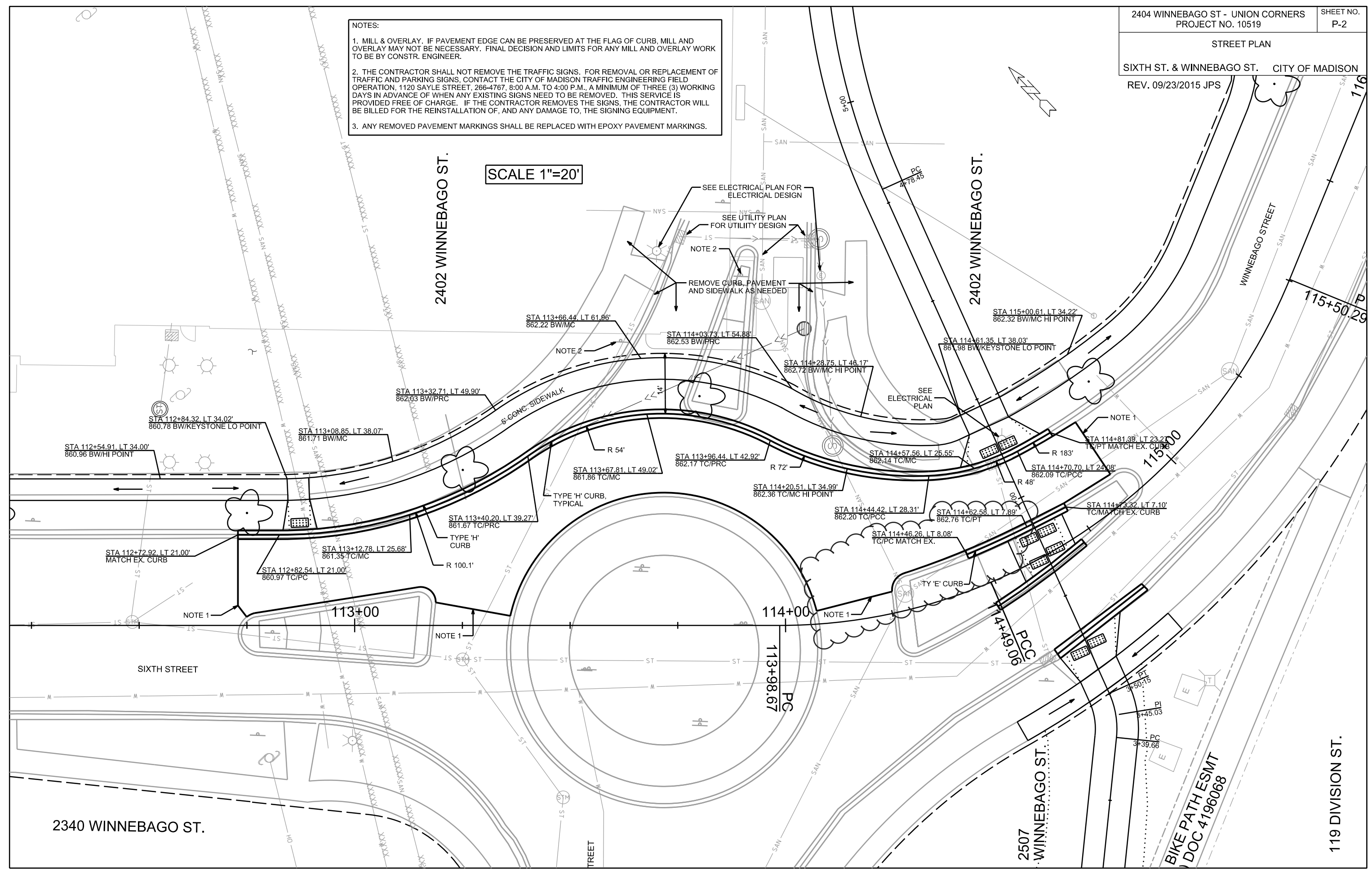
REV. DATE: _____

ORIGINATOR: CITY OF MADISON, STREETS DIVISION

NOTES:

1. MILL & OVERLAY. IF PAVEMENT EDGE CAN BE PRESERVED AT THE FLAG OF CURB, MILL AND OVERLAY MAY NOT BE NECESSARY. FINAL DECISION AND LIMITS FOR ANY MILL AND OVERLAY WORK TO BE BY CONSTR. ENGINEER.
2. THE CONTRACTOR SHALL NOT REMOVE THE TRAFFIC SIGNS. FOR REMOVAL OR REPLACEMENT OF TRAFFIC AND PARKING SIGNS, CONTACT THE CITY OF MADISON TRAFFIC ENGINEERING FIELD OPERATION, 1120 SAYLE STREET, 266-4767, 8:00 A.M. TO 4:00 P.M., A MINIMUM OF THREE (3) WORKING DAYS IN ADVANCE OF WHEN ANY EXISTING SIGNS NEED TO BE REMOVED. THIS SERVICE IS PROVIDED FREE OF CHARGE. IF THE CONTRACTOR REMOVES THE SIGNS, THE CONTRACTOR WILL BE BILLED FOR THE REINSTALLATION OF, AND ANY DAMAGE TO, THE SIGNING EQUIPMENT.
3. ANY REMOVED PAVEMENT MARKINGS SHALL BE REPLACED WITH EPOXY PAVEMENT MARKINGS.

SCALE 1"=20'



PLOT SCALE: _____

PLOT NAME: _____

REV. DATE: _____

ORIGINATOR: CITY OF MADISON, STREETS DIVISION

2402 WINNEBAGO ST.

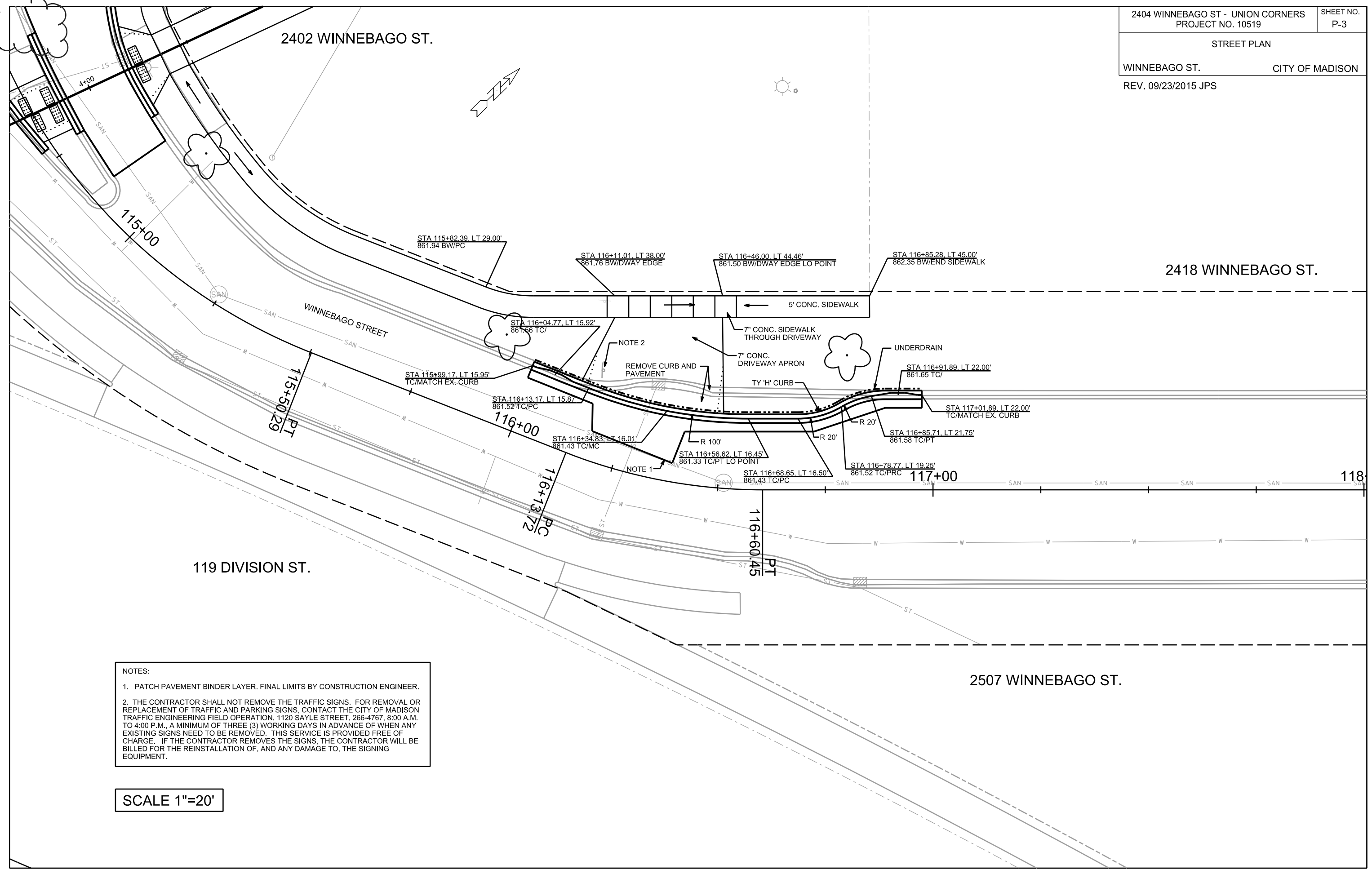
2418 WINNEBAGO ST.

119 DIVISION ST.

2507 WINNEBAGO ST.

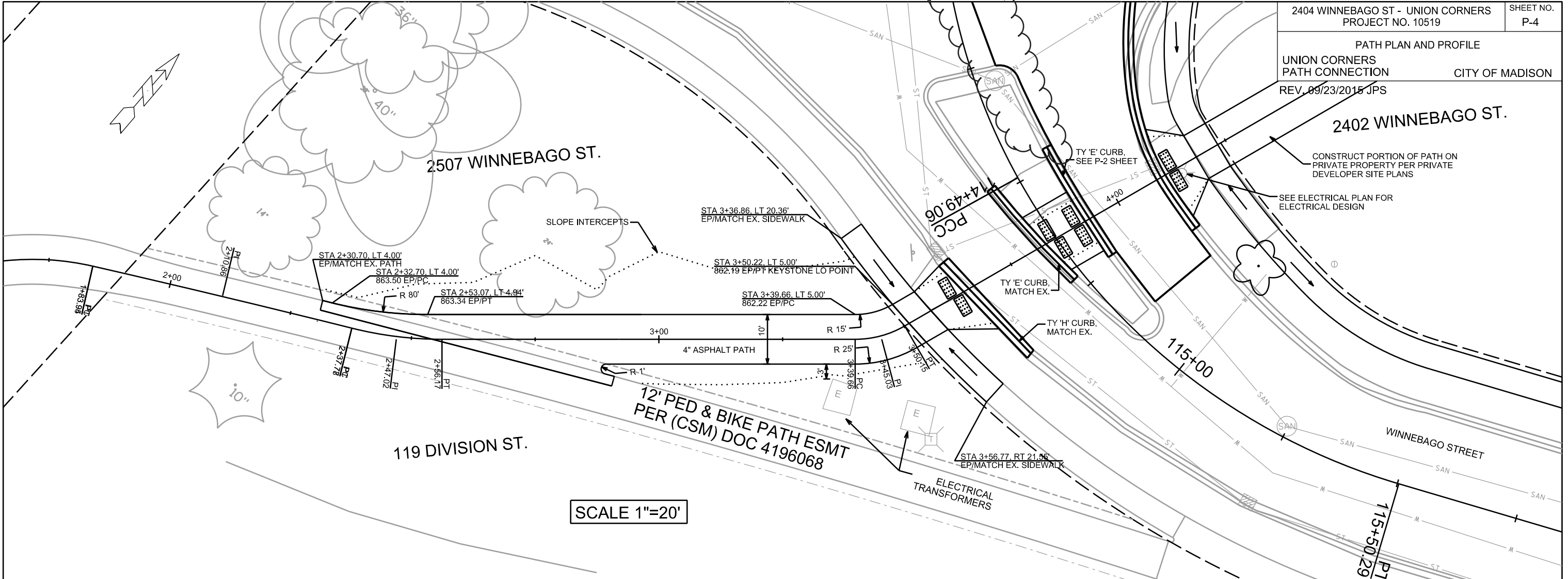
PLOT SCALE: _____
PLOT NAME: _____
REV. DATE: _____

ORIGINATOR: CITY OF MADISON, STREETS DIVISION

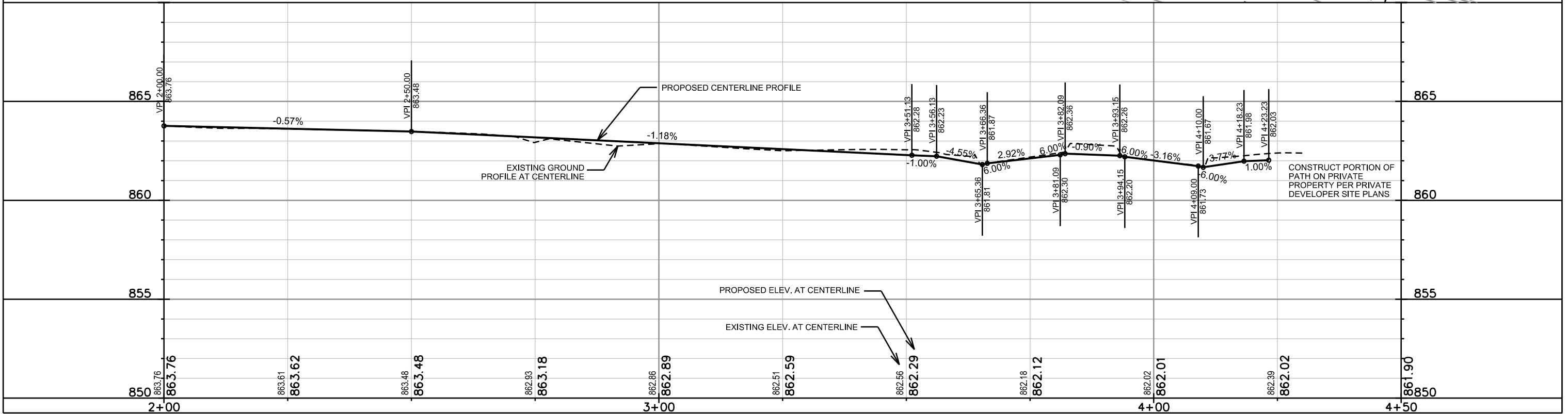


NOTES:
 1. PATCH PAVEMENT BINDER LAYER. FINAL LIMITS BY CONSTRUCTION ENGINEER.
 2. THE CONTRACTOR SHALL NOT REMOVE THE TRAFFIC SIGNS. FOR REMOVAL OR REPLACEMENT OF TRAFFIC AND PARKING SIGNS, CONTACT THE CITY OF MADISON TRAFFIC ENGINEERING FIELD OPERATION, 1120 SAYLE STREET, 266-4767, 8:00 A.M. TO 4:00 P.M., A MINIMUM OF THREE (3) WORKING DAYS IN ADVANCE OF WHEN ANY EXISTING SIGNS NEED TO BE REMOVED. THIS SERVICE IS PROVIDED FREE OF CHARGE. IF THE CONTRACTOR REMOVES THE SIGNS, THE CONTRACTOR WILL BE BILLED FOR THE REINSTALLATION OF, AND ANY DAMAGE TO, THE SIGNING EQUIPMENT.

SCALE 1"=20'



SCALE 1"=20'



PLOT SCALE: _____

PLOT NAME: _____

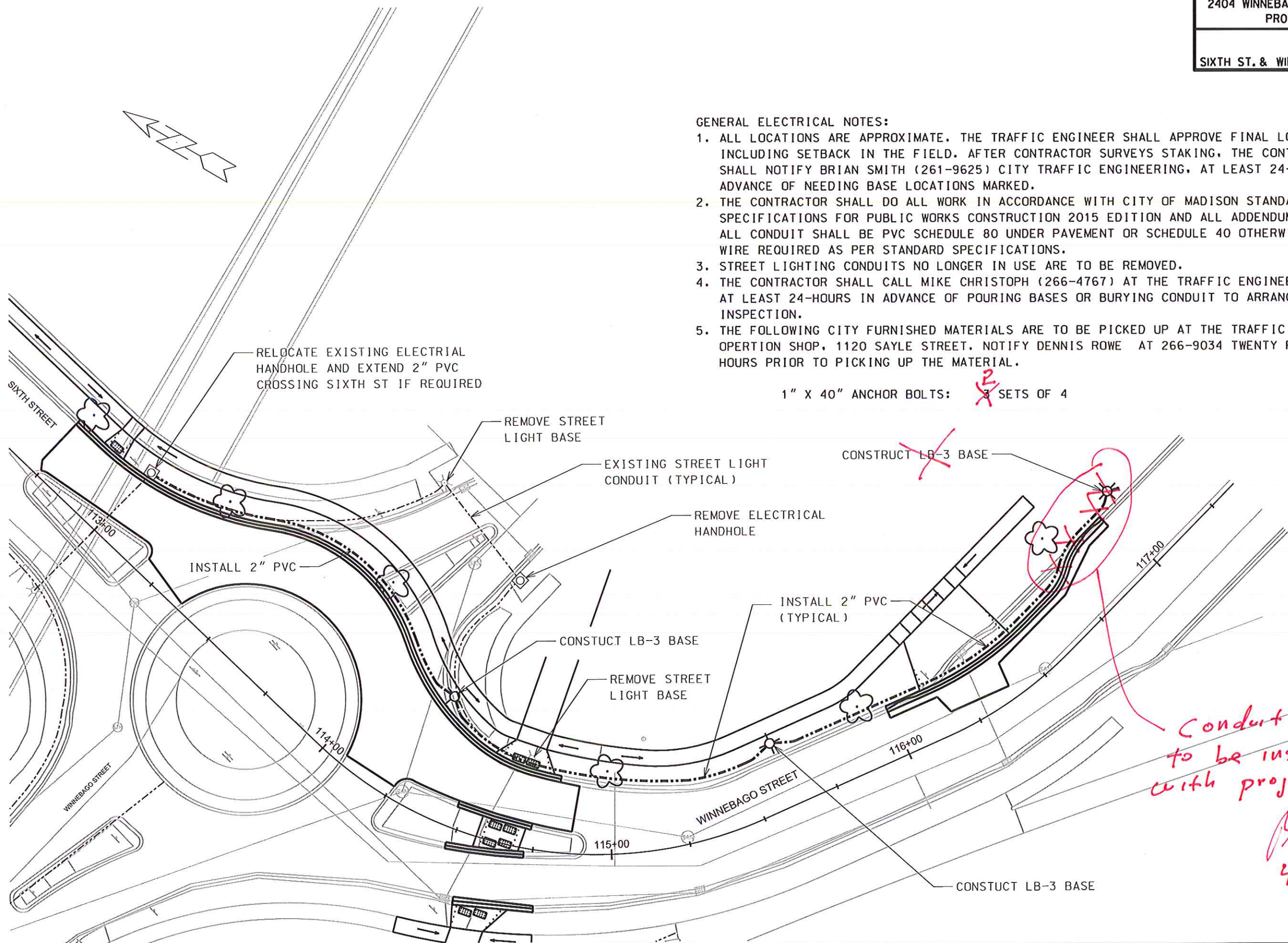
REV. DATE: _____

ORIGINATOR: CITY OF MADISON, STREETS DIVISION

GENERAL ELECTRICAL NOTES:

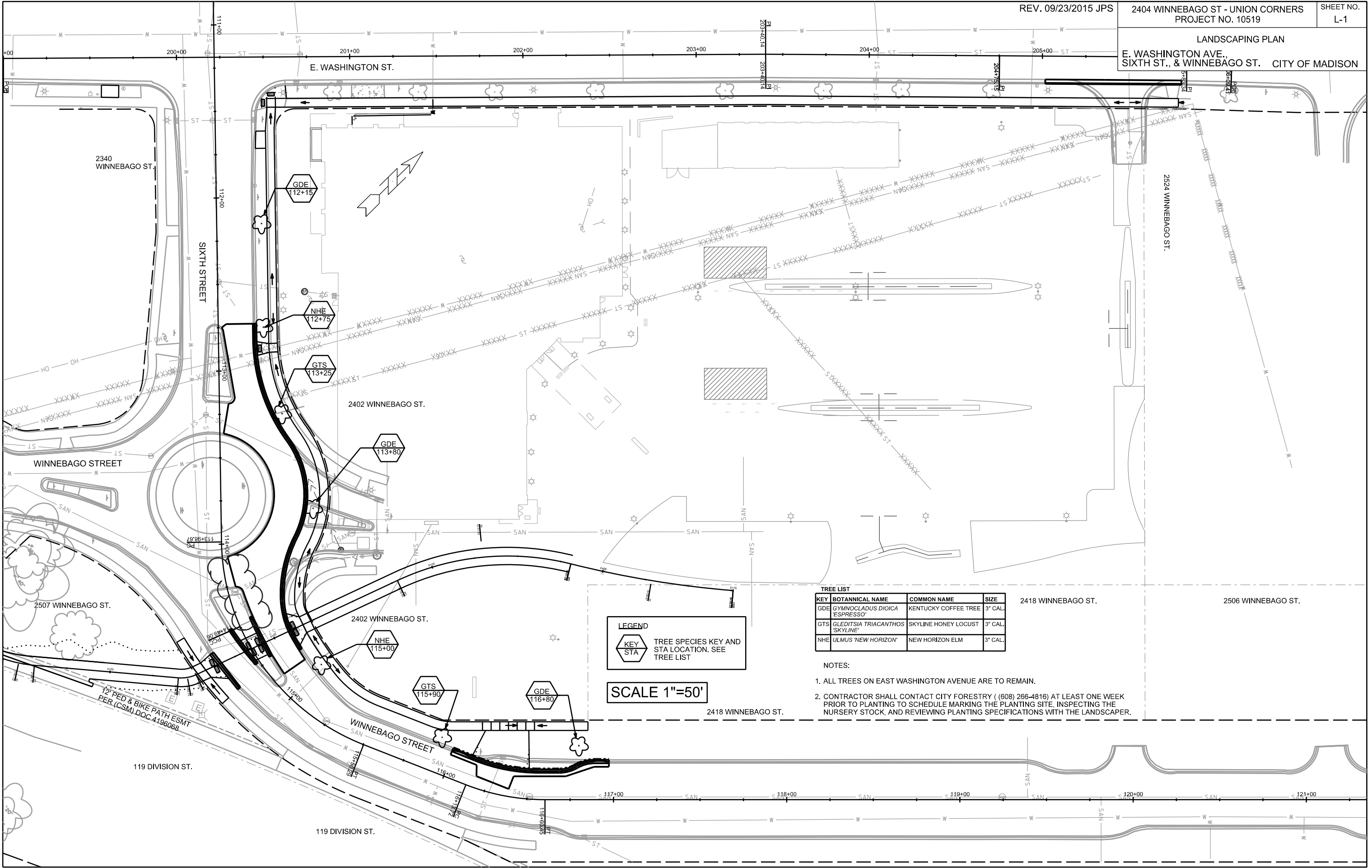
1. ALL LOCATIONS ARE APPROXIMATE. THE TRAFFIC ENGINEER SHALL APPROVE FINAL LOCATIONS INCLUDING SETBACK IN THE FIELD. AFTER CONTRACTOR SURVEYS STAKING, THE CONTRACTOR SHALL NOTIFY BRIAN SMITH (261-9625) CITY TRAFFIC ENGINEERING, AT LEAST 24-HOURS IN ADVANCE OF NEEDING BASE LOCATIONS MARKED.
2. THE CONTRACTOR SHALL DO ALL WORK IN ACCORDANCE WITH CITY OF MADISON STANDARD SPECIFICATIONS FOR PUBLIC WORKS CONSTRUCTION 2015 EDITION AND ALL ADDENDUMS THERETO. ALL CONDUIT SHALL BE PVC SCHEDULE 80 UNDER PAVEMENT OR SCHEDULE 40 OTHERWISE. PULL WIRE REQUIRED AS PER STANDARD SPECIFICATIONS.
3. STREET LIGHTING CONDUITS NO LONGER IN USE ARE TO BE REMOVED.
4. THE CONTRACTOR SHALL CALL MIKE CHRISTOPH (266-4767) AT THE TRAFFIC ENGINEERING SHOP AT LEAST 24-HOURS IN ADVANCE OF POURING BASES OR BURYING CONDUIT TO ARRANGE FOR INSPECTION.
5. THE FOLLOWING CITY FURNISHED MATERIALS ARE TO BE PICKED UP AT THE TRAFFIC TRAFFIC OPERATION SHOP, 1120 SAYLE STREET. NOTIFY DENNIS ROWE AT 266-9034 TWENTY FOUR (24) HOURS PRIOR TO PICKING UP THE MATERIAL.

1" X 40" ANCHOR BOLTS: ~~3~~ ² SETS OF 4



*Conduit & Base
to be installed
with project # 11256
BL
4-26-16*

LANDSCAPING PLAN
E. WASHINGTON AVE.,
SIXTH ST., & WINNEBAGO ST. CITY OF MADISON



TREE LIST

KEY	BOTANNICAL NAME	COMMON NAME	SIZE
GDE	GYMNOCLADUS DIOICA 'ESPRESSO'	KENTUCKY COFFEE TREE	3" CAL.
GTS	GLEDITSIA TRIACANTHOS 'SKYLINE'	SKYLINE HONEY LOCUST	3" CAL.
NHE	ULMUS 'NEW HORIZON'	NEW HORIZON ELM	3" CAL.

LEGEND

KEY STA TREE SPECIES KEY AND STA LOCATION. SEE TREE LIST

SCALE 1"=50'

- NOTES:**
- ALL TREES ON EAST WASHINGTON AVENUE ARE TO REMAIN.
 - CONTRACTOR SHALL CONTACT CITY FORESTRY ((608) 266-4816) AT LEAST ONE WEEK PRIOR TO PLANTING TO SCHEDULE MARKING THE PLANTING SITE, INSPECTING THE NURSERY STOCK, AND REVIEWING PLANTING SPECIFICATIONS WITH THE LANDSCAPER.

PLOT SCALE:

PLOT NAME:

REV. DATE:

ORIGINATOR: CITY OF MADISON, STREETS DIVISION

0710-061-3509-2
CITY OF MADISON EDD
2402 Winnebago St

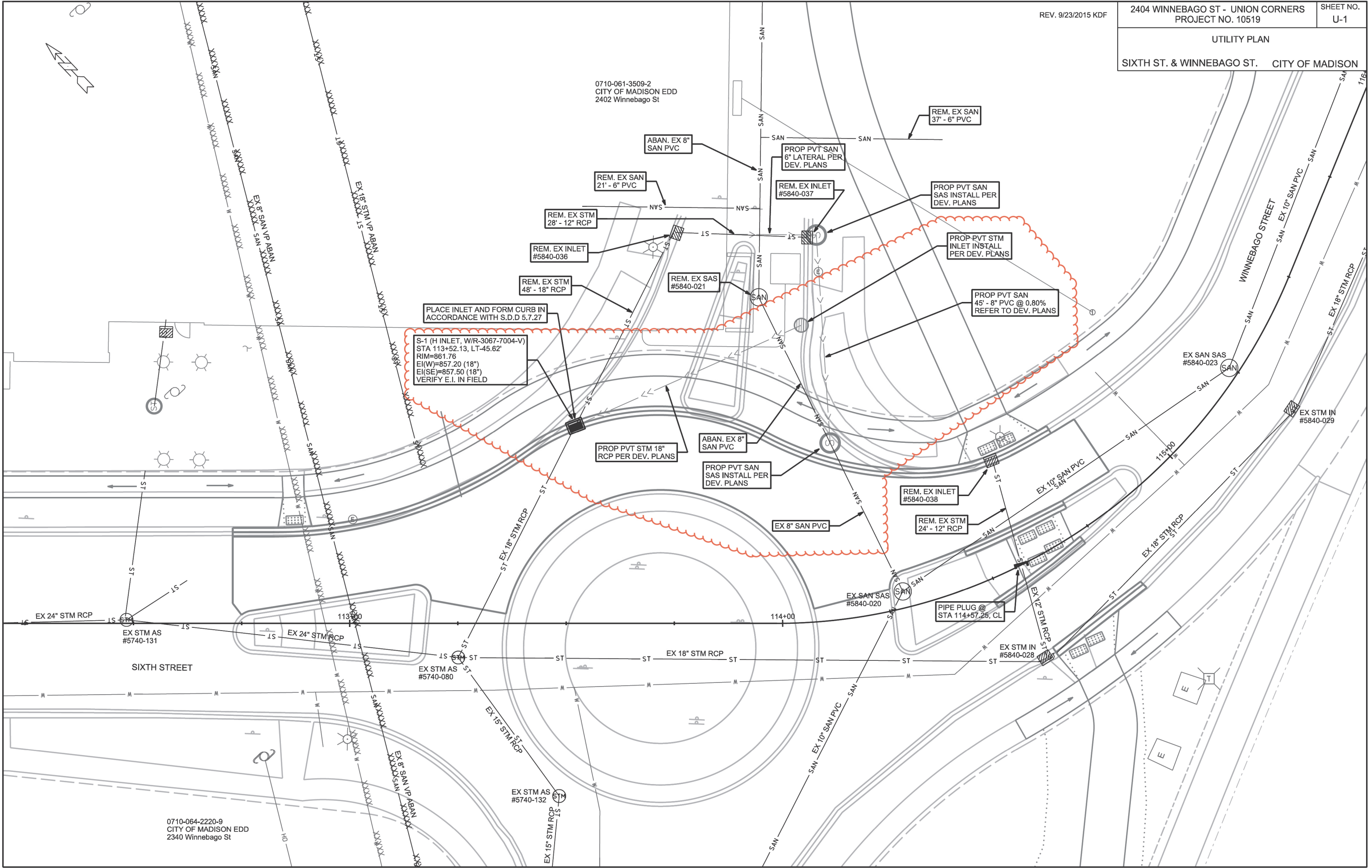
0710-064-2220-9
CITY OF MADISON EDD
2340 Winnebago St

PLOT SCALE: _____

PLOT NAME: _____

REV. DATE: _____

ORIGINATOR: CITY OF MADISON, STREETS DIVISION



PLACE INLET AND FORM CURB IN ACCORDANCE WITH S.D.D 5.7.27
S-1 (H INLET, W/R-3067-7004-V)
STA 113+52.13, LT-45.62'
RIM=861.76
EI(W)=857.20 (18")
EI(SE)=857.50 (18")
VERIFY E.I. IN FIELD

NOTE: PLACE INLET AND FORM CURB IN ACCORDANCE WITH S.D.D 5.7.27

0710-061-3509-2
CITY OF MADISON EDD
2402 Winnebago St

0710-061-3510-9
CITY OF MADISON EDD
2418 Winnebago St

S-3 (H INLET, W/R-3067-7004-V)
STA 116+04.77, LT-15.92'
RIM=861.49
EI(W)=856.86 (12")

PROP. STM
23' - 12" RCP @ 0.50%

PROP. STM
25' - 12" RCP @ 0.50%

REM. EX STM
10' - 15" RCP

REM. EX INLET
#5840-032

S-4 (H INLET, W/R-3067-7004-VB)
STA 116+91.89, LT-22.00'
RIM=861.33
EI(W)=856.87 (12")
EI(E)=856.87 (12")

S-5 (H INLET, W/R-3067-7004-V)
STA 116+91.89, LT-22.00'
RIM=861.65
EI(W)=857.05 (12")

PROP. STM
35.5' - 12" RCP @ 0.50%

S-2 (3X3 SAS, W/R-1050-0054)
STA 116+29.13, LT-11.34'
RIM=861.21
EI(W)=856.74 (12")
EI(E)=856.74 (12")
EI(S)= 856.49 (15")
VERIFY E.I. IN FIELD

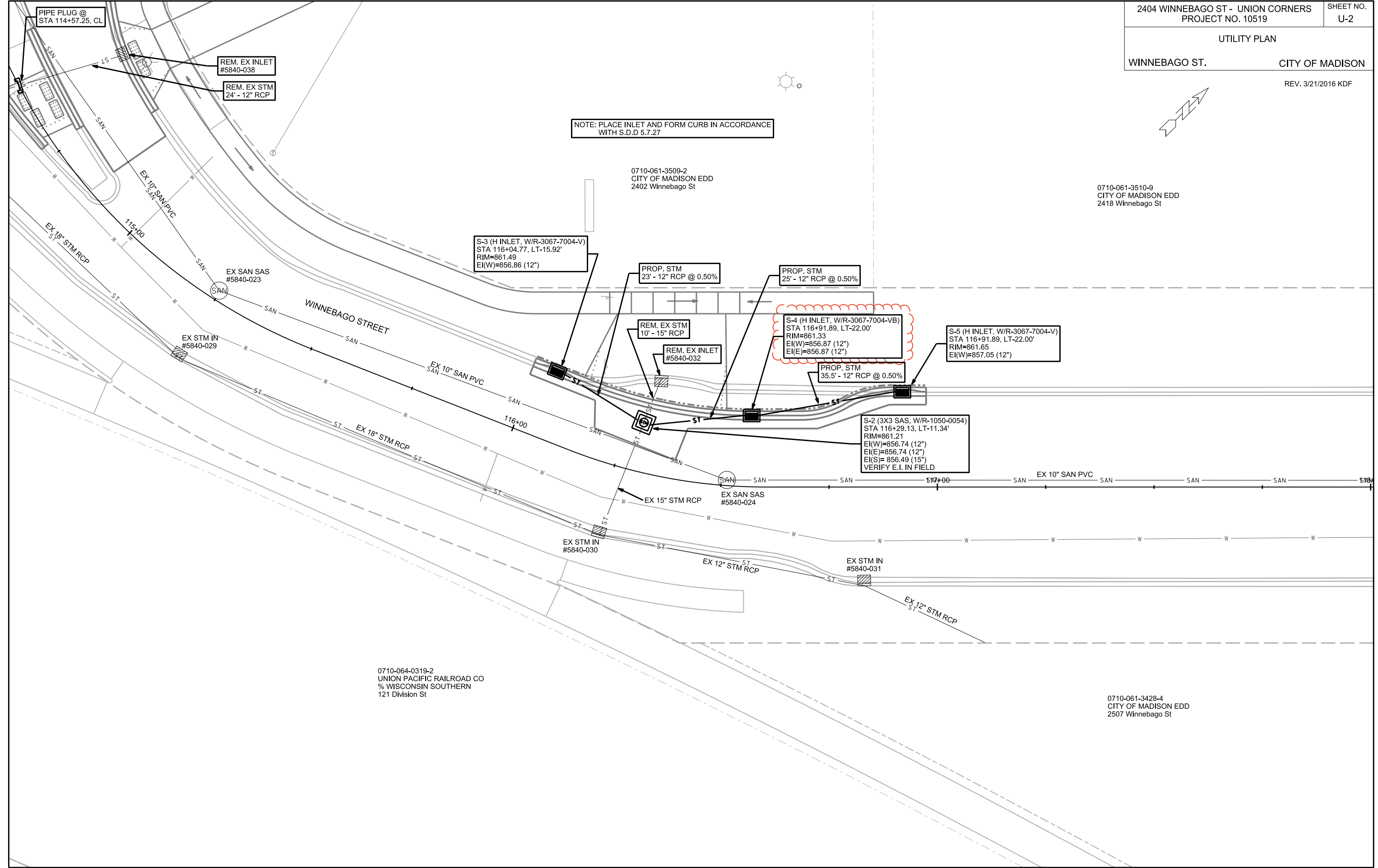
EX STM IN
#5840-030

EX SAN SAS
#5840-024

EX STM IN
#5840-031

0710-064-0319-2
UNION PACIFIC RAILROAD CO
% WISCONSIN SOUTHERN
121 Division St

0710-061-3428-4
CITY OF MADISON EDD
2507 Winnebago St



PLOT SCALE: 1"=20'

PLOT NAME:

REV. DATE:

ORIGINATOR: CITY OF MADISON, STREETS DIVISION

CROSS SECTIONS
UNION CORNERS
PATH CONNECTION CITY OF MADISON

PLOT SCALE: _____

PLOT NAME: _____

REV. DATE: _____

ORIGINATOR: CITY OF MADISON - STREETS DIVISION

