

Madison, Wisconsin

CITY OF MADISON

CITY ENGINEERING DIVISION

DEPARTMENT OF PUBLIC WORKS

PLAN OF PROPOSED IMPROVEMENT

PUBLIC IMPROVEMENT PROJECT APPROVED

MAY 15, 2016

BY THE COMMON COUNCIL
OF MADISON, WISCONSIN

PUBLIC IMPROVEMENT DESIGN
APPROVED BY:

 7/19/16
City Engineer Date

SANITARY SEWER
DESIGNED BY:

SANITARY SEWER PLANS
DESIGNED BY CONSULTANT

WATER MAIN
DESIGNED BY:

WATER MAIN PLANS
DESIGNED BY CONSULTANT

INDEX OF SHEETS

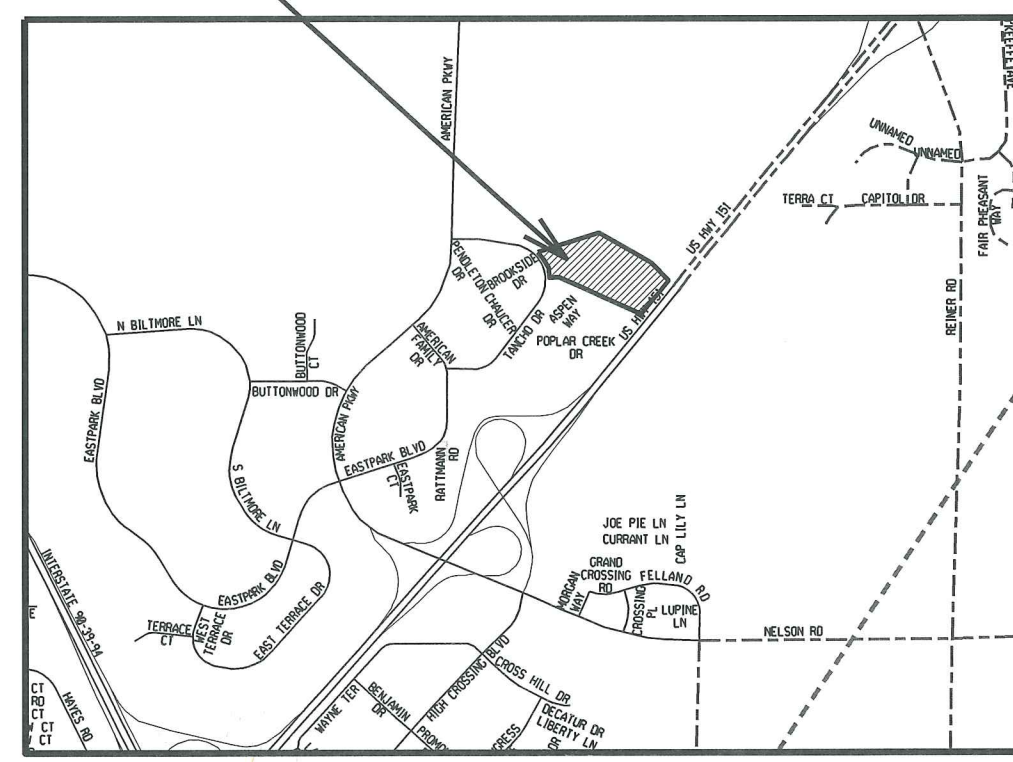
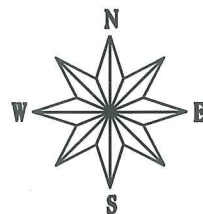
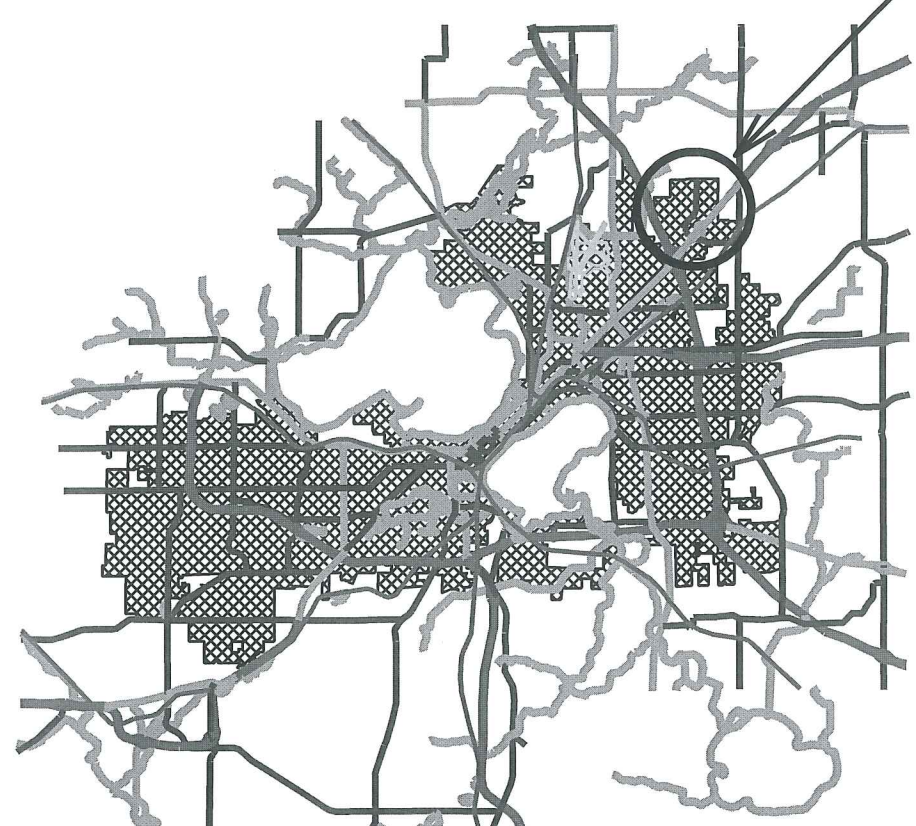
SHEET NO.	TITLE
1	WATER AND SANITARY SERVICES
C 300	BLACK ONYX DRIVE SANITARY SEWER
SAN 1.0	SLATE DRIVE SANITARY SEWER
SAN 2.0-4.0	BLACK ONYX DRIVE WATER MAIN
WM 1.0-2.0,5.0	SLATE DRIVE WATER MAIN
WM 3.0-4.0	

5401 TANCHO DRIVE- 22 SLATE

MUNIS# 11361
CONTRACT# 7694

CONVENTIONAL SIGNS	
FIELD VERIFY ALL UTILITY LOCATIONS	
GAS	— G —
STORM SEWER	— ST —
SANITARY SEWER	— SAN —
WATER	— W —
OVERHEAD ELECTRIC	— OH —
POWER POLE	□

PROJECT
LOCATION

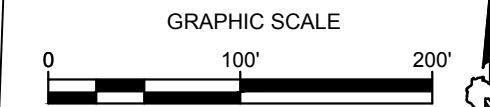
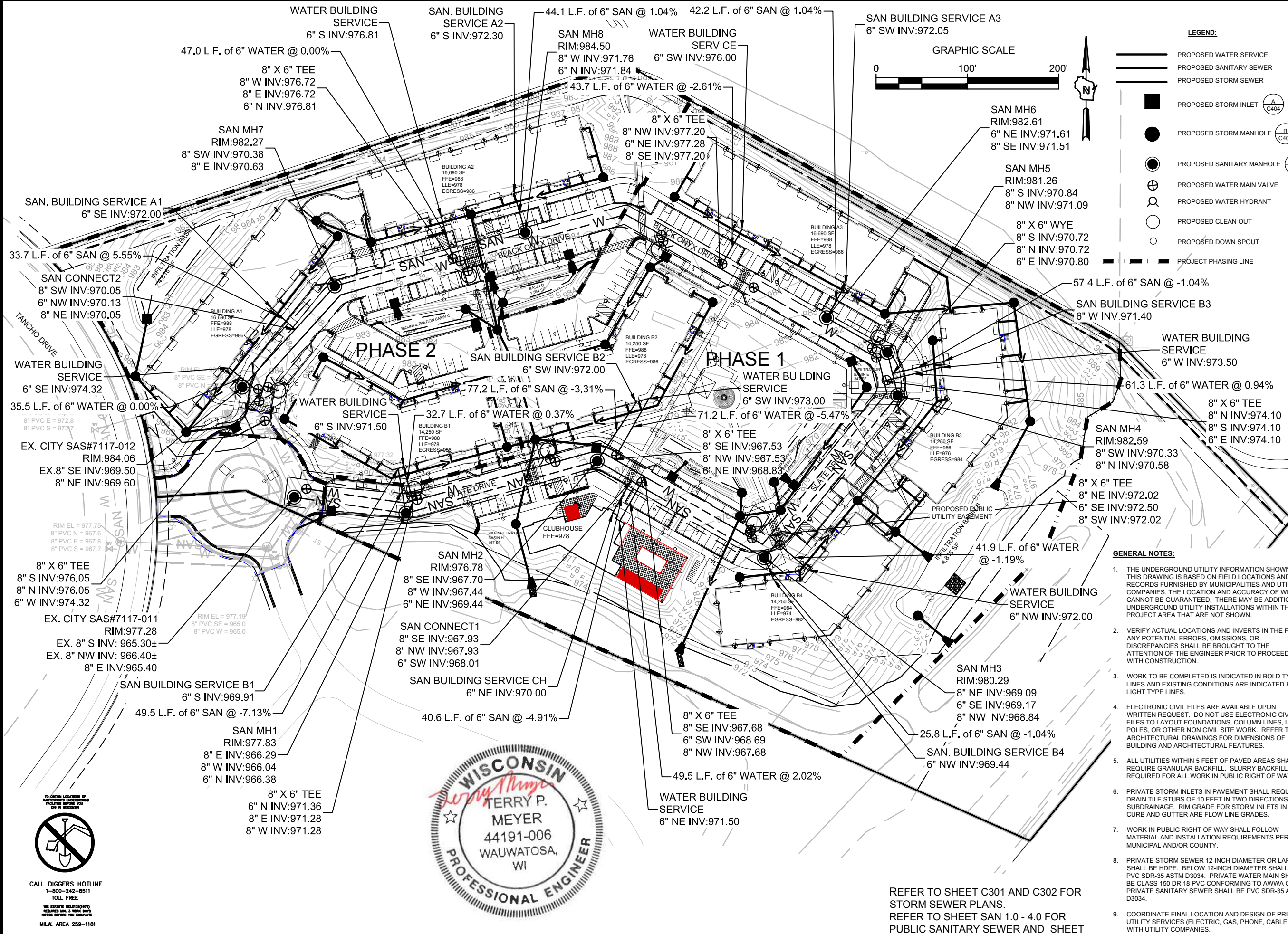


PLOT SCALE: _____

PLOT NAME: _____

REV. DATE: _____

ORIGINATOR: CITY OF MADISON, STREETS DIVISION



- LEGEND:**
- PROPOSED WATER SERVICE
 - PROPOSED SANITARY SEWER
 - PROPOSED STORM SEWER
 - PROPOSED STORM INLET (A C404)
 - PROPOSED STORM MANHOLE (B C404)
 - PROPOSED SANITARY MANHOLE (C C404)
 - ⊕ PROPOSED WATER MAIN VALVE
 - ⊕ PROPOSED WATER HYDRANT
 - PROPOSED CLEAN OUT
 - PROPOSED DOWN SPOUT
 - - - - - PROJECT PHASING LINE

- GENERAL NOTES:**
1. THE UNDERGROUND UTILITY INFORMATION SHOWN ON THIS DRAWING IS BASED ON FIELD LOCATIONS AND/OR RECORDS FURNISHED BY MUNICIPALITIES AND UTILITY COMPANIES. THE LOCATION AND ACCURACY OF WHICH CANNOT BE GUARANTEED. THERE MAY BE ADDITIONAL UNDERGROUND UTILITY INSTALLATIONS WITHIN THE PROJECT AREA THAT ARE NOT SHOWN.
 2. VERIFY ACTUAL LOCATIONS AND INVERTS IN THE FIELD. ANY POTENTIAL ERRORS, OMISSIONS, OR DISCREPANCIES SHALL BE BROUGHT TO THE ATTENTION OF THE ENGINEER PRIOR TO PROCEEDING WITH CONSTRUCTION.
 3. WORK TO BE COMPLETED IS INDICATED IN BOLD TYPE LINES AND EXISTING CONDITIONS ARE INDICATED BY LIGHT TYPE LINES.
 4. ELECTRONIC CIVIL FILES ARE AVAILABLE UPON WRITTEN REQUEST. DO NOT USE ELECTRONIC CIVIL FILES TO LAYOUT FOUNDATIONS, COLUMN LINES, LIGHT POLES, OR OTHER NON CIVIL SITE WORK. REFER TO ARCHITECTURAL DRAWINGS FOR DIMENSIONS OF BUILDING AND ARCHITECTURAL FEATURES.
 5. ALL UTILITIES WITHIN 5 FEET OF PAVED AREAS SHALL REQUIRE GRANULAR BACKFILL. SLURRY BACKFILL IS REQUIRED FOR ALL WORK IN PUBLIC RIGHT OF WAY.
 6. PRIVATE STORM INLETS IN PAVEMENT SHALL REQUIRE DRAIN TILE STUBS OF 10 FEET IN TWO DIRECTIONS FOR SUBDRAINAGE. RIM GRADE FOR STORM INLETS IN CURB AND GUTTER ARE FLOW LINE GRADES.
 7. WORK IN PUBLIC RIGHT OF WAY SHALL FOLLOW MATERIAL AND INSTALLATION REQUIREMENTS PER MUNICIPAL AND/OR COUNTY.
 8. PRIVATE STORM SEWER 12-INCH DIAMETER OR LARGER SHALL BE HDPE. BELOW 12-INCH DIAMETER SHALL BE PVC SDR-35 ASTM D3034. PRIVATE WATER MAIN SHALL BE CLASS 150 DR 18 PVC CONFORMING TO AWWA C-900. PRIVATE SANITARY SEWER SHALL BE PVC SDR-35 ASTM D3034.
 9. COORDINATE FINAL LOCATION AND DESIGN OF PRIVATE UTILITY SERVICES (ELECTRIC, GAS, PHONE, CABLE) WITH UTILITY COMPANIES.
 10. ALL PUBLIC SEWER TO BE IN ACCORDANCE WITH THE CITY OF MADISON STANDARDS AND STANDARD SPECIFICATIONS FOR SEWER AND WATER CONSTRUCTION IN WISCONSIN.

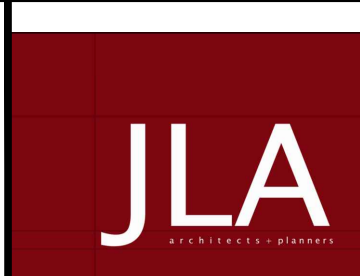


CALL DIGGERS HOTLINE
1-800-242-8511
TOLL FREE

WE SERVICE NEIGHBORHOODS
REQUIRE MIN. 3 HOUR NOTICE
BEFORE YOU EXCAVATE
MILWAUKEE AREA 259-1181

THE UNDERGROUND UTILITY INFORMATION SHOWN ON THIS MAP IS BASED ON FIELD MARKINGS AND INFORMATION FURNISHED BY UTILITY COMPANIES AND THE LOCAL MUNICIPALITY. WHILE THIS INFORMATION IS BELIEVED TO BE RELIABLE, ITS ACCURACY AND COMPLETENESS CANNOT BE GUARANTEED.

REFER TO SHEET C301 AND C302 FOR STORM SEWER PLANS.
REFER TO SHEET SAN 1.0 - 4.0 FOR PUBLIC SANITARY SEWER AND SHEET WM 1.0 - 4.0 FOR WATER MAIN PLANS



JLA PROJECT NUMBER: 15-0617

Fiduciary
REAL ESTATE DEVELOPMENT, INC.

THE SIGMA GROUP
Single Source. Sound Solutions.
www.thesigmagroup.com
1300 West Canal Street
Milwaukee, WI 53233
Phone: 414-643-4200
Fax: 414-643-4210

Fiduciary Real Estate Development

22 SLATE

CONSTRUCTION DOCUMENTS

DATE OF ISSUANCE JANUARY 6, 2016

REVISION SCHEDULE		
Mark	Description	Date
1	Staff Review Submittal	April 11, 2016
2	Construction Set	July 07, 2016

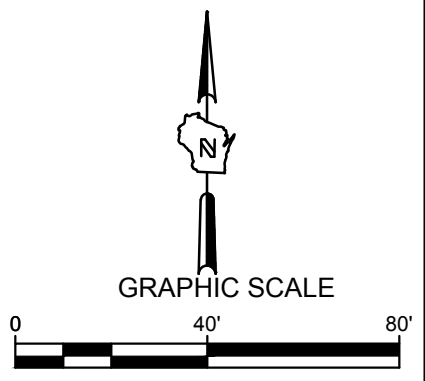
SHEET TITLE
WATER AND SANITARY SERVICES PLAN

SHEET NUMBER
C 300



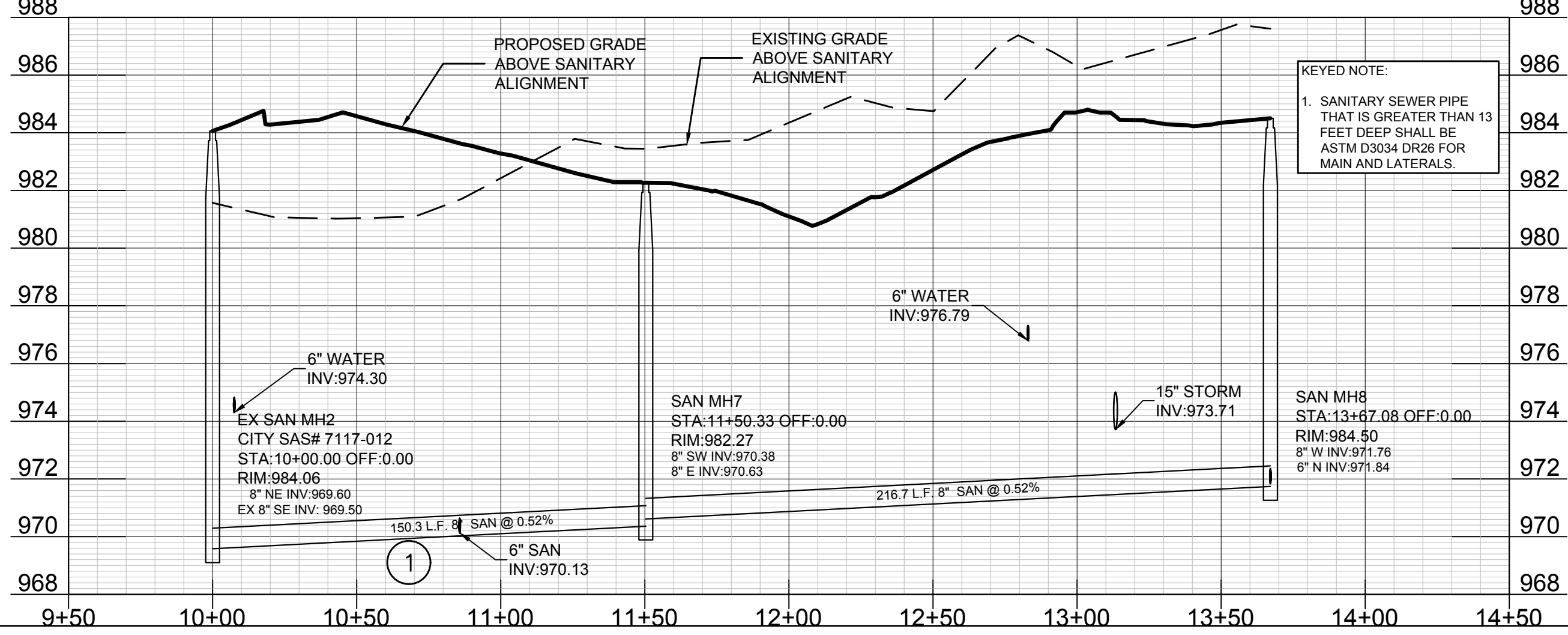
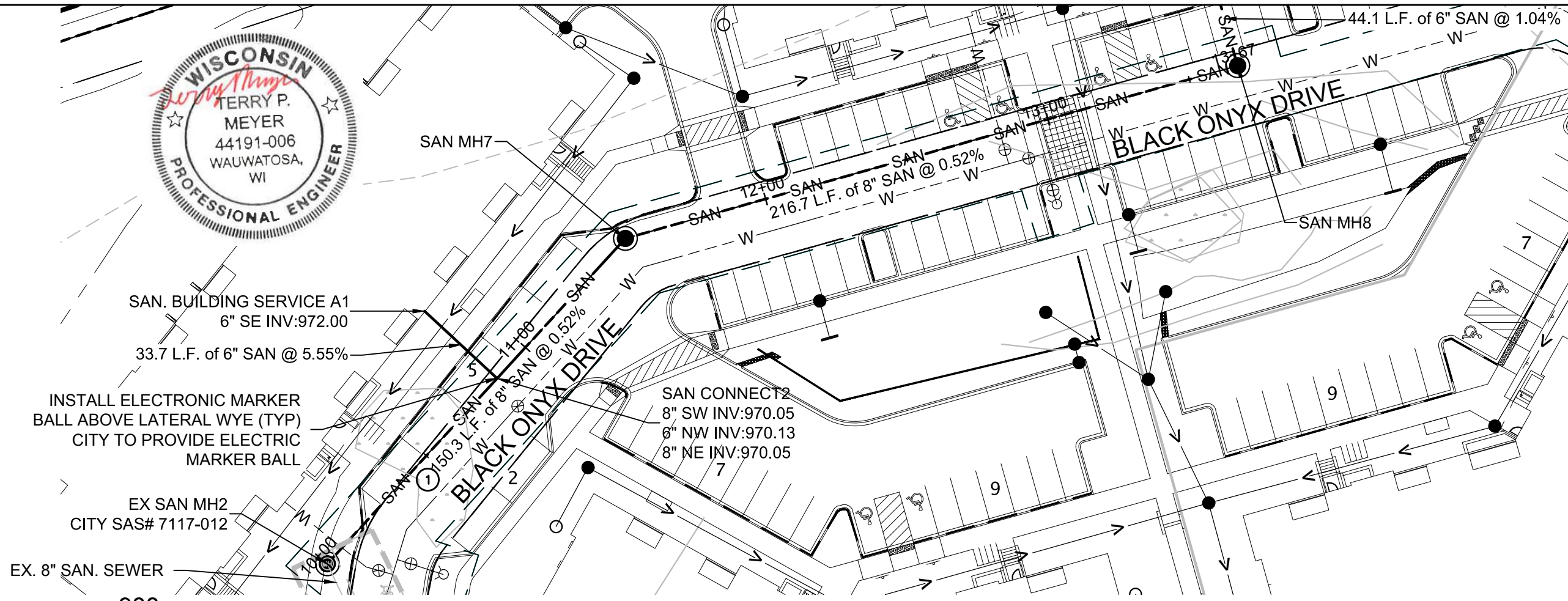
ALL MATERIAL IN THE CONSTRUCTION OF PUBLIC SANITARY SEWER SHALL BE IN ACCORDANCE WITH THE CITY OF MADISON SPECIFICATIONS FOR PUBLIC WORKS CONSTRUCTION, THE LATEST EDITION.

JULY 1, 2016 CONSTRUCTION SET



SIGMA
Single Source. Sound Solutions. GROUP

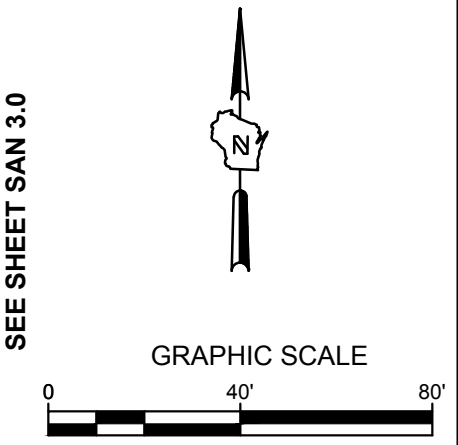
www.thesigmagroup.com
1300 West Canal Street
Milwaukee, WI 53233
Phone: 414-643-4200
Fax: 414-643-4210



File: I:\Joseph Lee & Associates\15669 Tanchcho Drive\060 CAD\C - Civil\Plans\506-Utility\Plan\Public\Sanitary\15669-PBL-C SAN.dwg

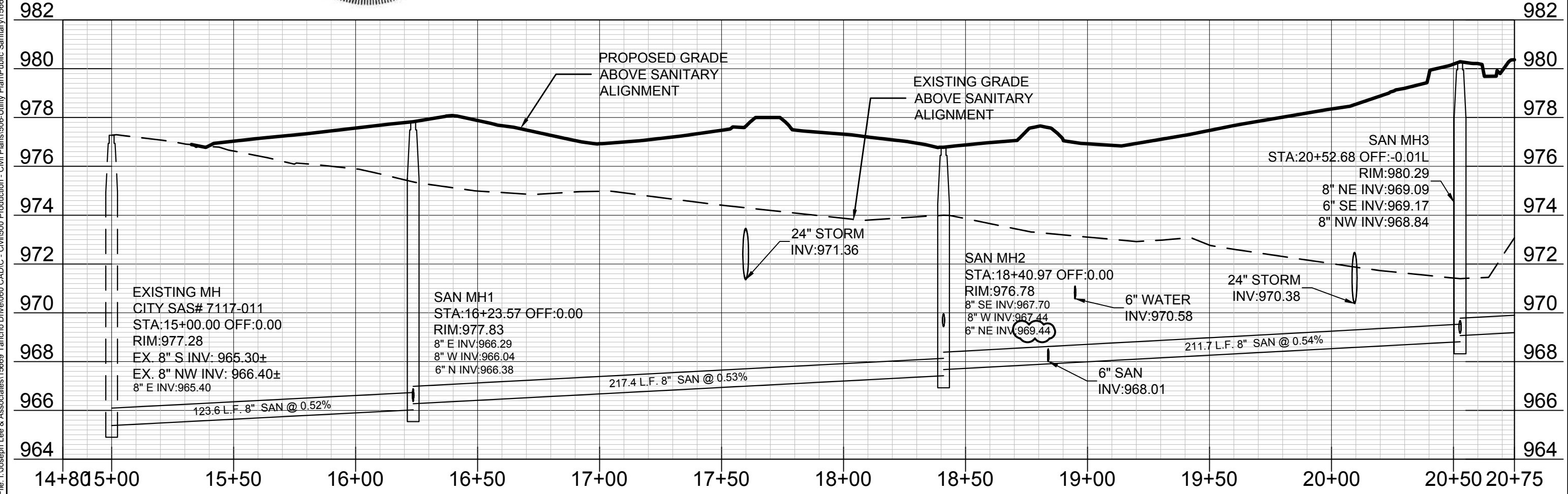
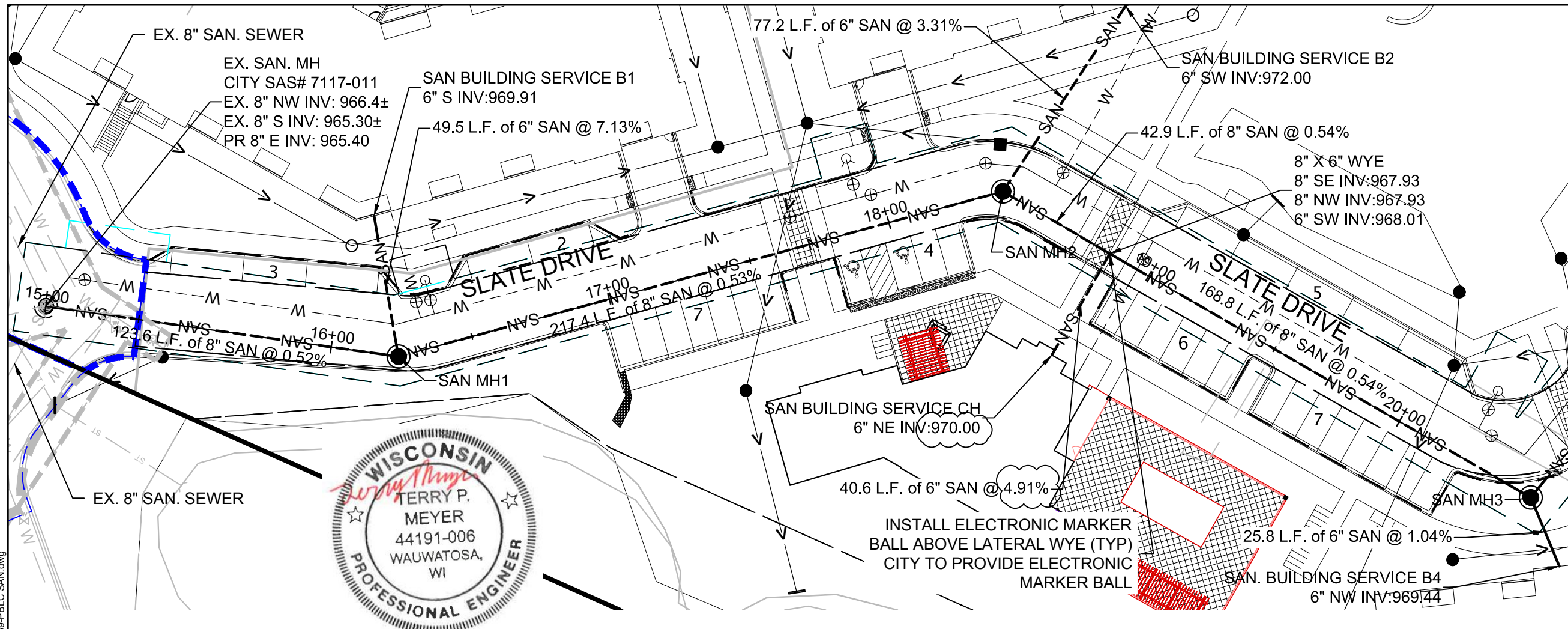
ALL MATERIAL IN THE CONSTRUCTION OF PUBLIC SANITARY SEWER SHALL BE IN ACCORDANCE WITH THE CITY OF MADISON SPECIFICATIONS FOR PUBLIC WORKS CONSTRUCTION, THE LATEST EDITION.

JULY 7, 2016 CONSTRUCTION SET



www.thesigmagroup.com
1300 West Canal Street
Milwaukee, WI 53233
Phone: 414-643-4200
Fax: 414-643-4210

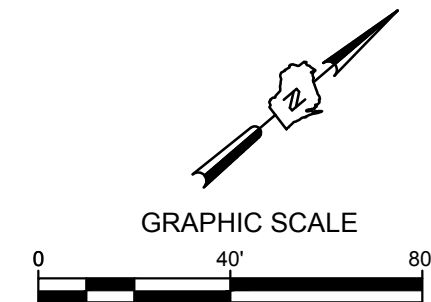
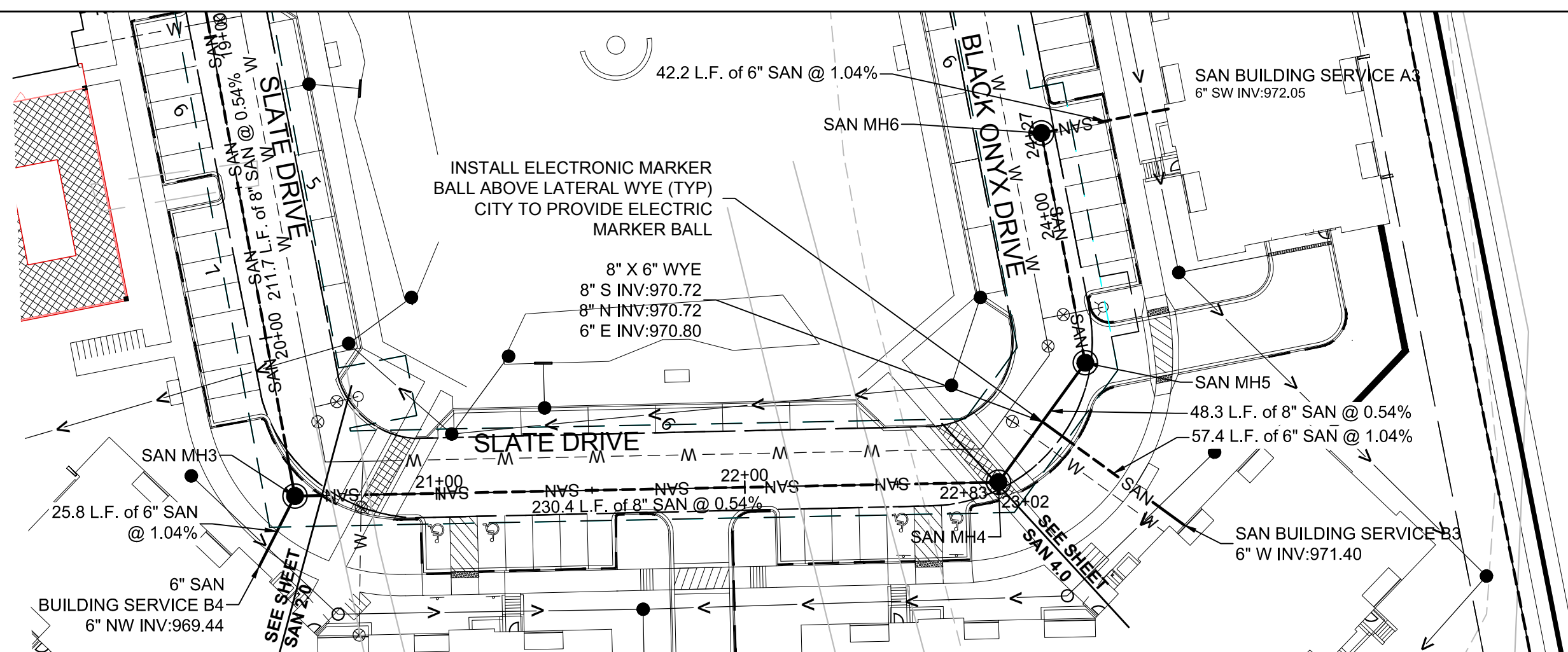
THE SIGMA GROUP
Single Source. Sound Solutions.



File: I:\Joseph Lee & Associates\15669 Tancho Drive\060 CAD\C - Civil\500 Production - Civil\Plans\506-Utility\Plan\Public Sanitary\15669-PBL.C SAN.dwg

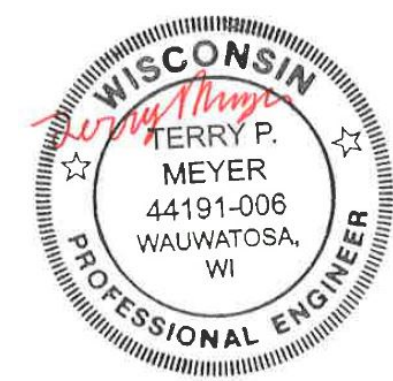
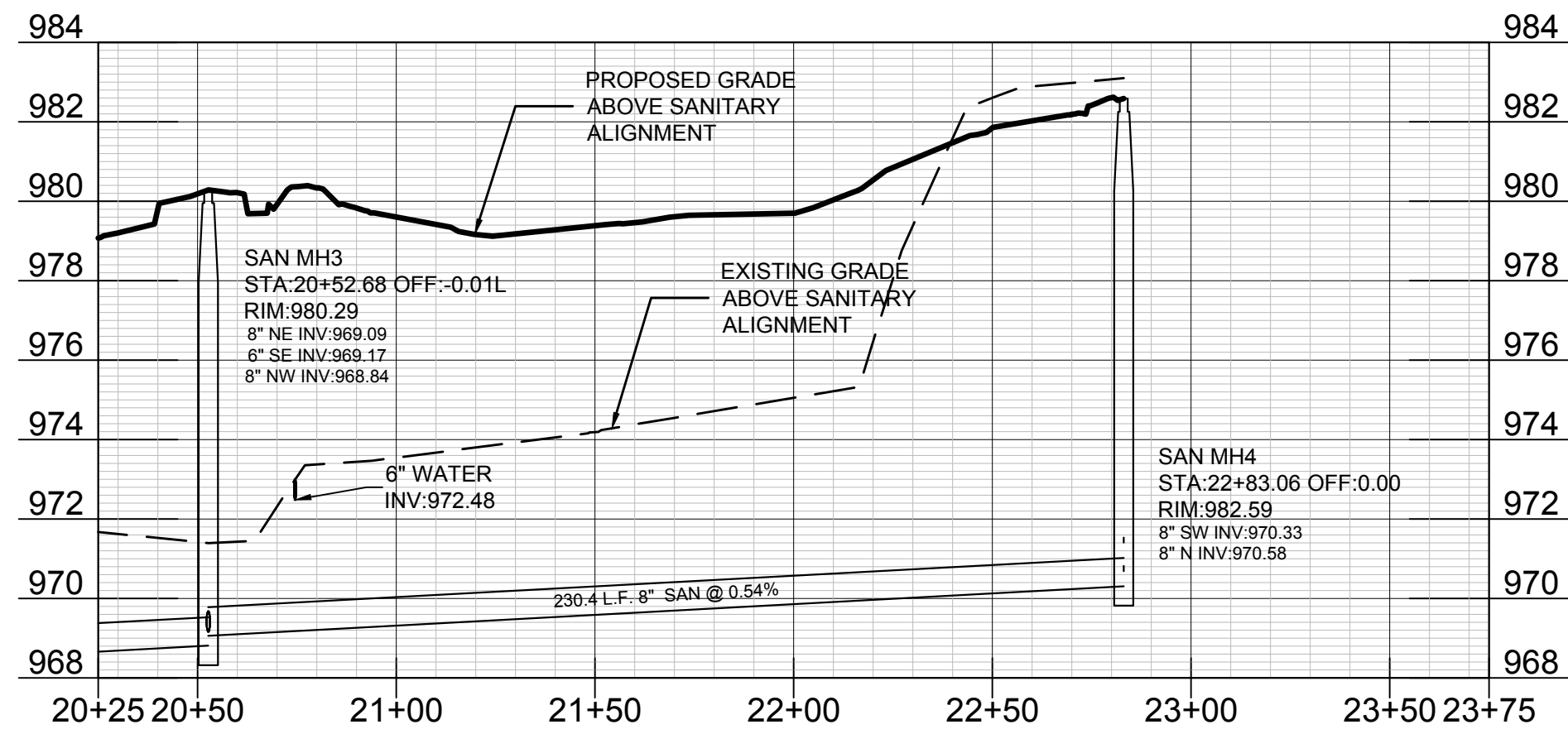
ALL MATERIAL IN THE CONSTRUCTION OF PUBLIC SANITARY SEWER SHALL BE IN ACCORDANCE WITH THE CITY OF MADISON SPECIFICATIONS FOR PUBLIC WORKS CONSTRUCTION, THE LATEST EDITION.

JULY 7, 2016 CONSTRUCTION SET



www.thesigmagroup.com
1300 West Canal Street
Milwaukee, WI 53233
Phone: 414-643-4200
Fax: 414-643-4210

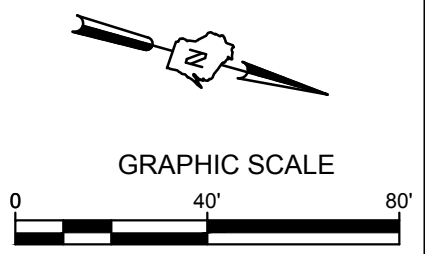
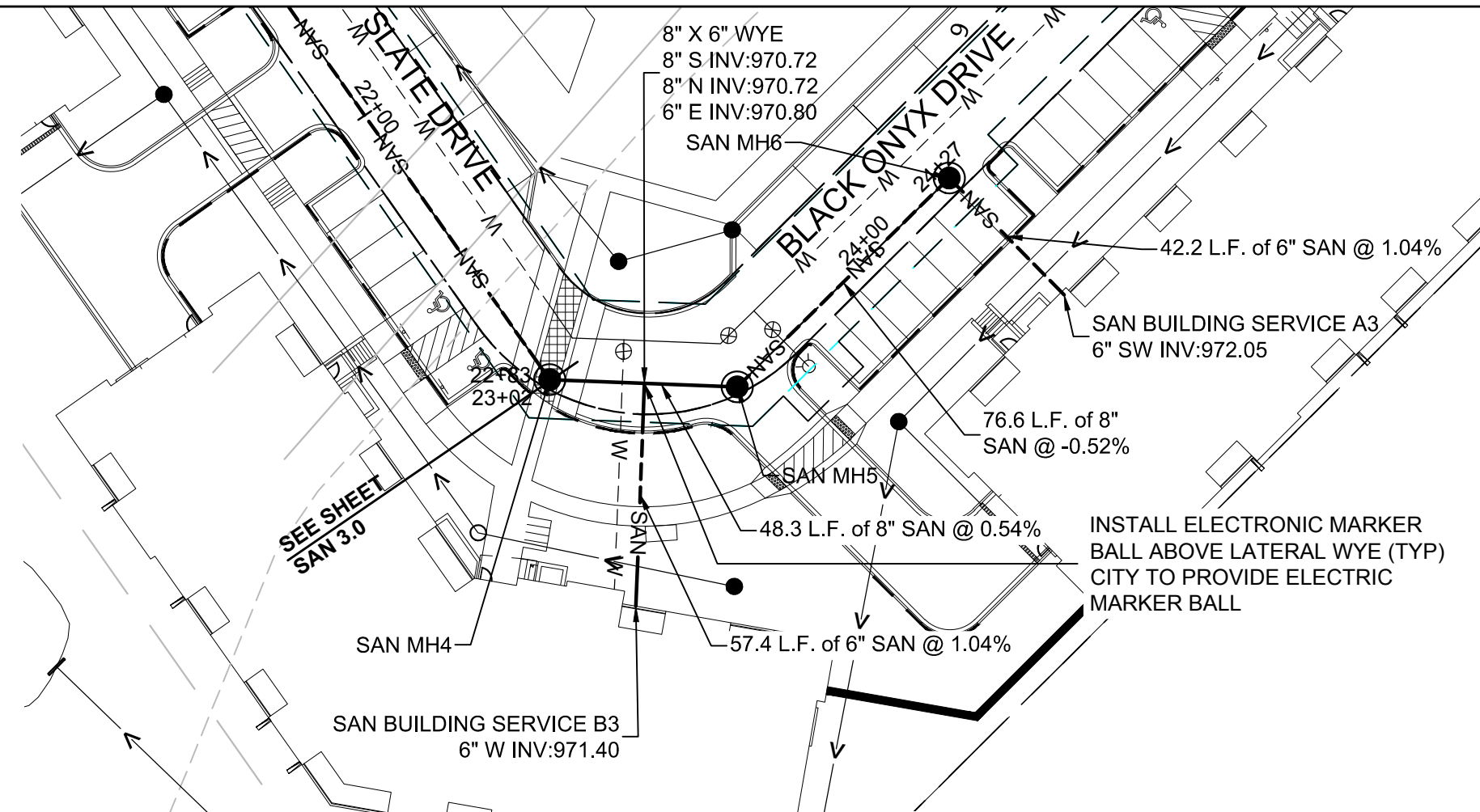
SIGMA
Single Source. Sound Solutions. GROUP



File: I:\Joseph Lee & Associates\15669 Tancho Drive\060 CAD\C - Civil\500 Production - Civil\Plans\506-Utility Plan\Public Sanitary\15669-PBL.C SAN.dwg

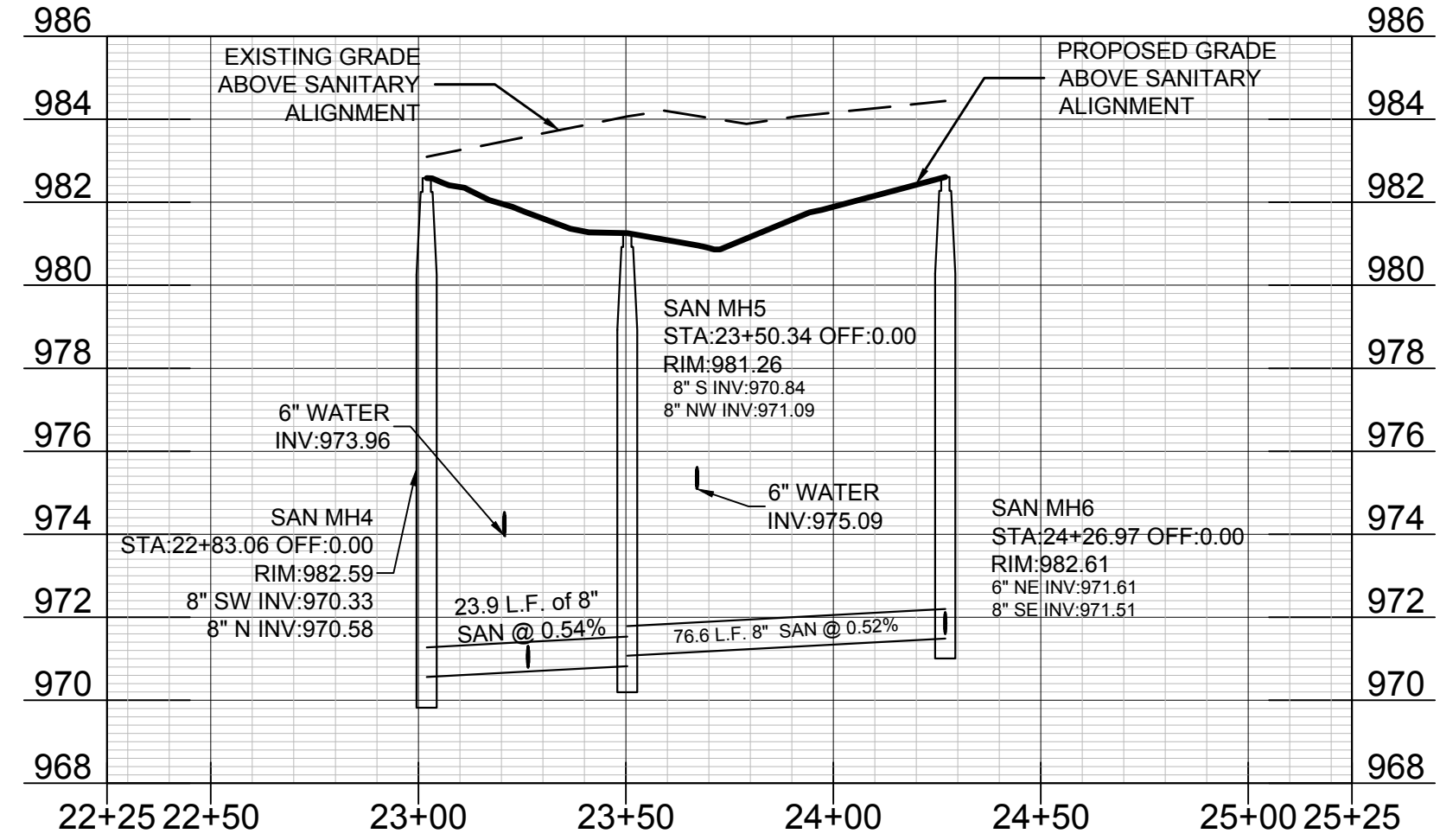
ALL MATERIAL IN THE CONSTRUCTION OF PUBLIC SANITARY SEWER SHALL BE IN ACCORDANCE WITH THE CITY OF MADISON SPECIFICATIONS FOR PUBLIC WORKS CONSTRUCTION, THE LATEST EDITION.

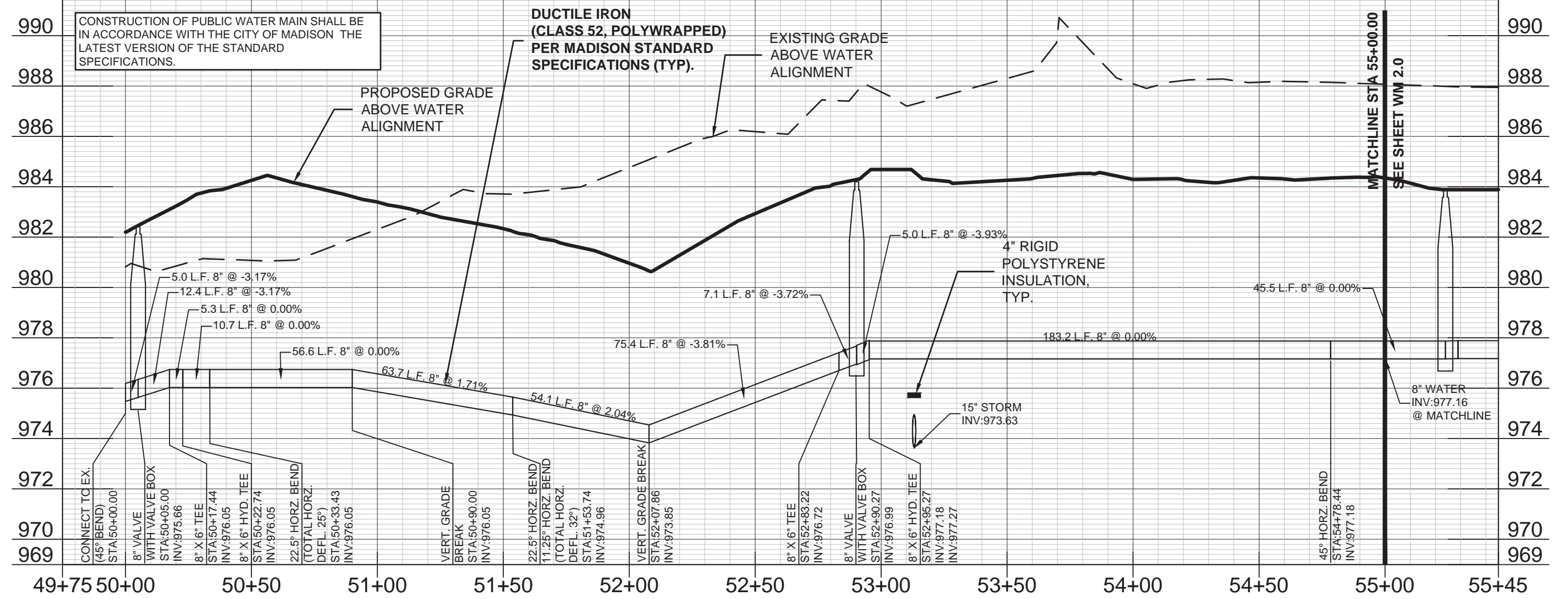
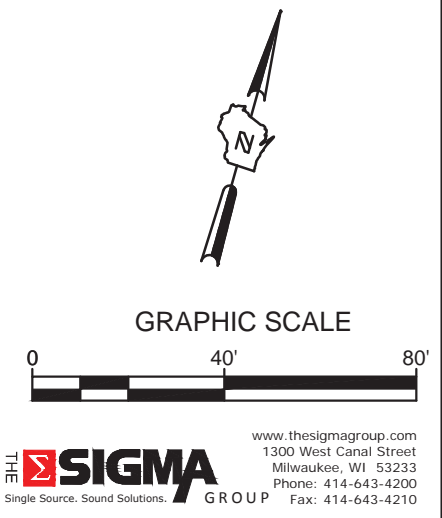
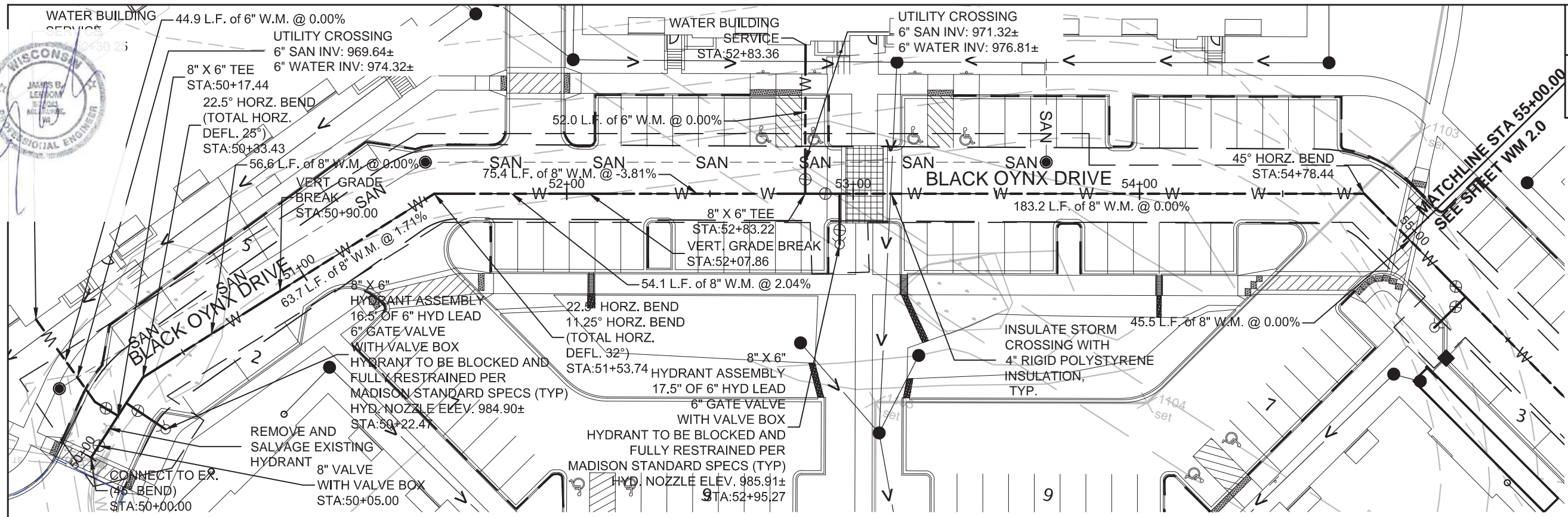
JULY 7, 2016 CONSTRUCTION SET



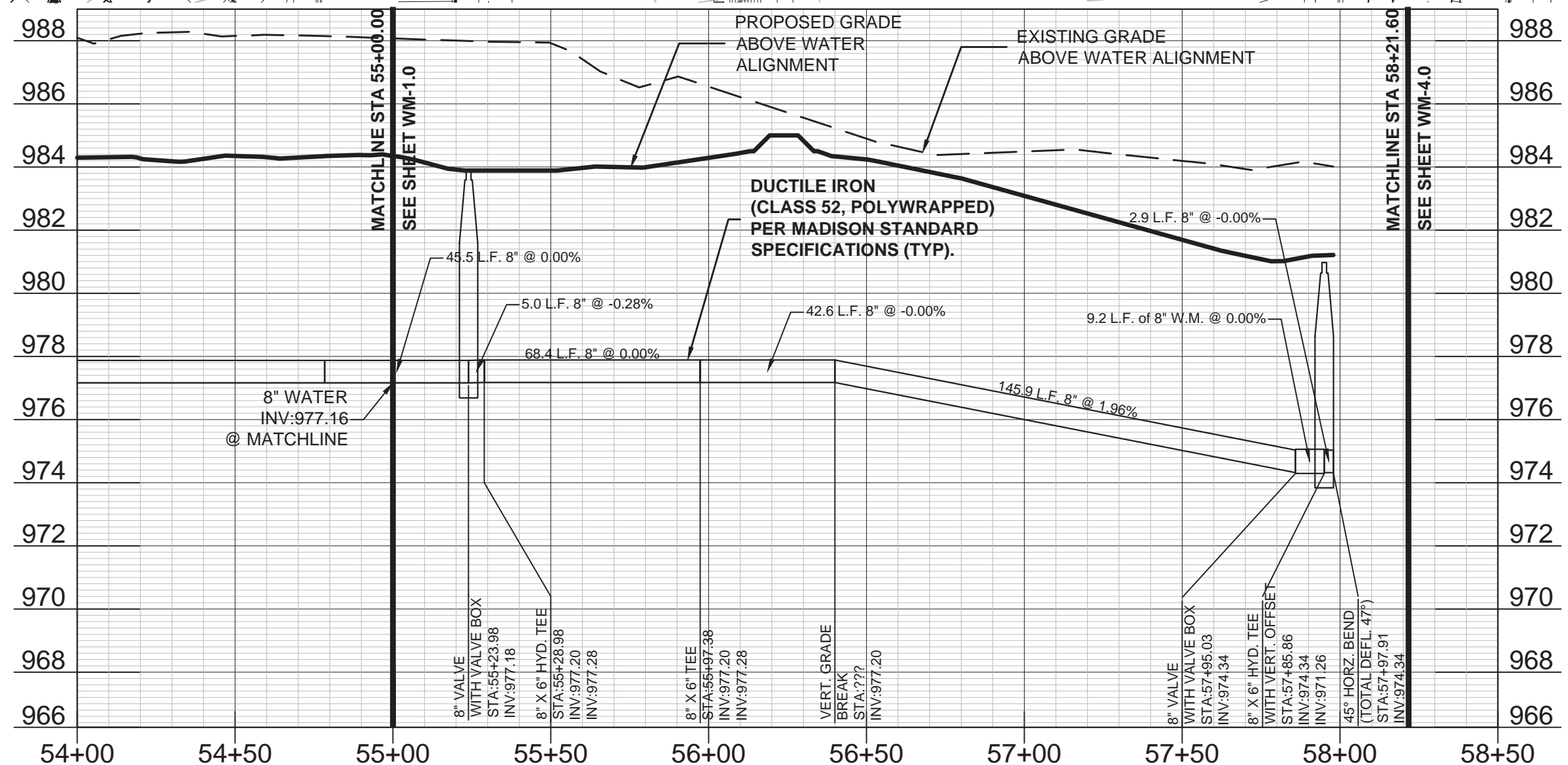
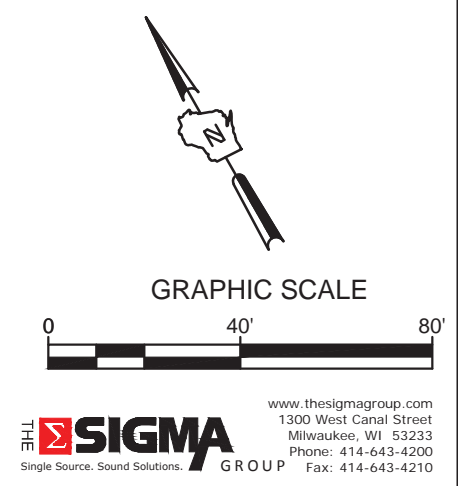
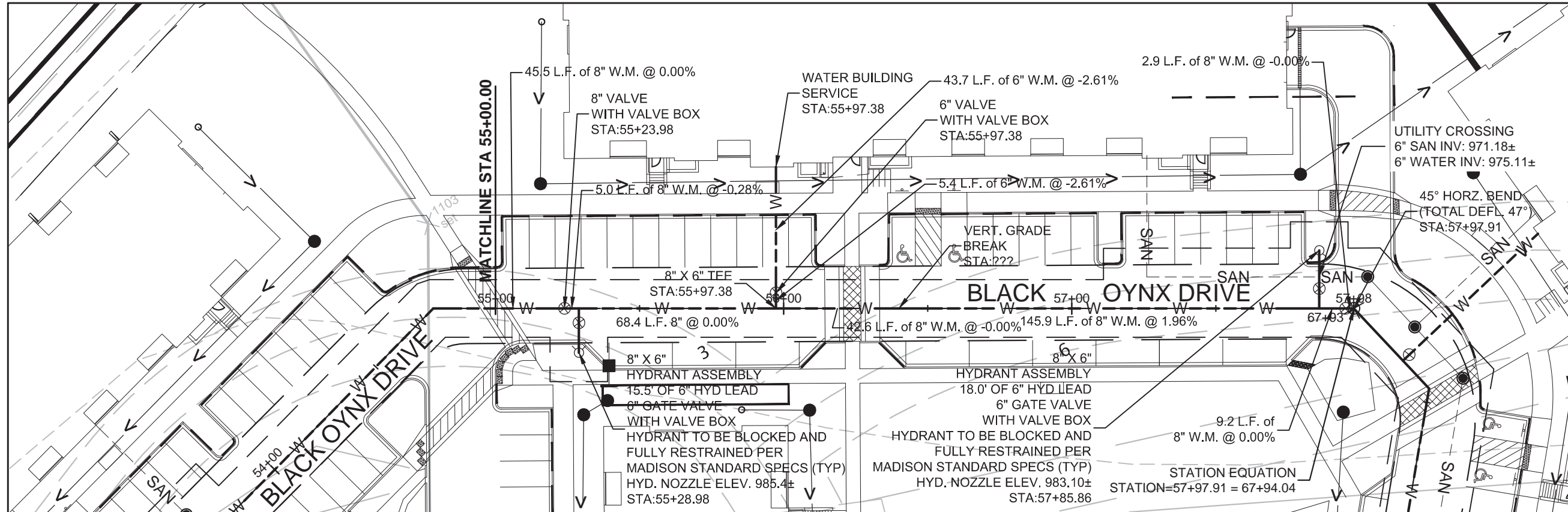
www.thesigmagroup.com
1300 West Canal Street
Milwaukee, WI 53233
Phone: 414-643-4200
Fax: 414-643-4210

SIGMA
Single Source. Sound Solutions. GROUP



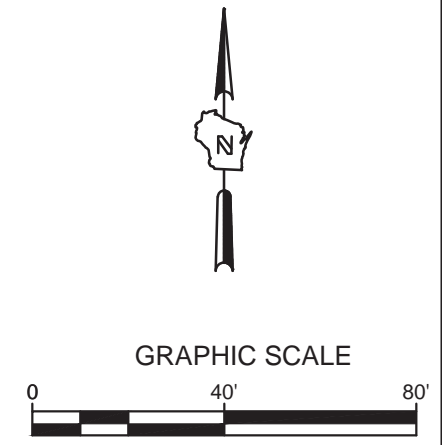
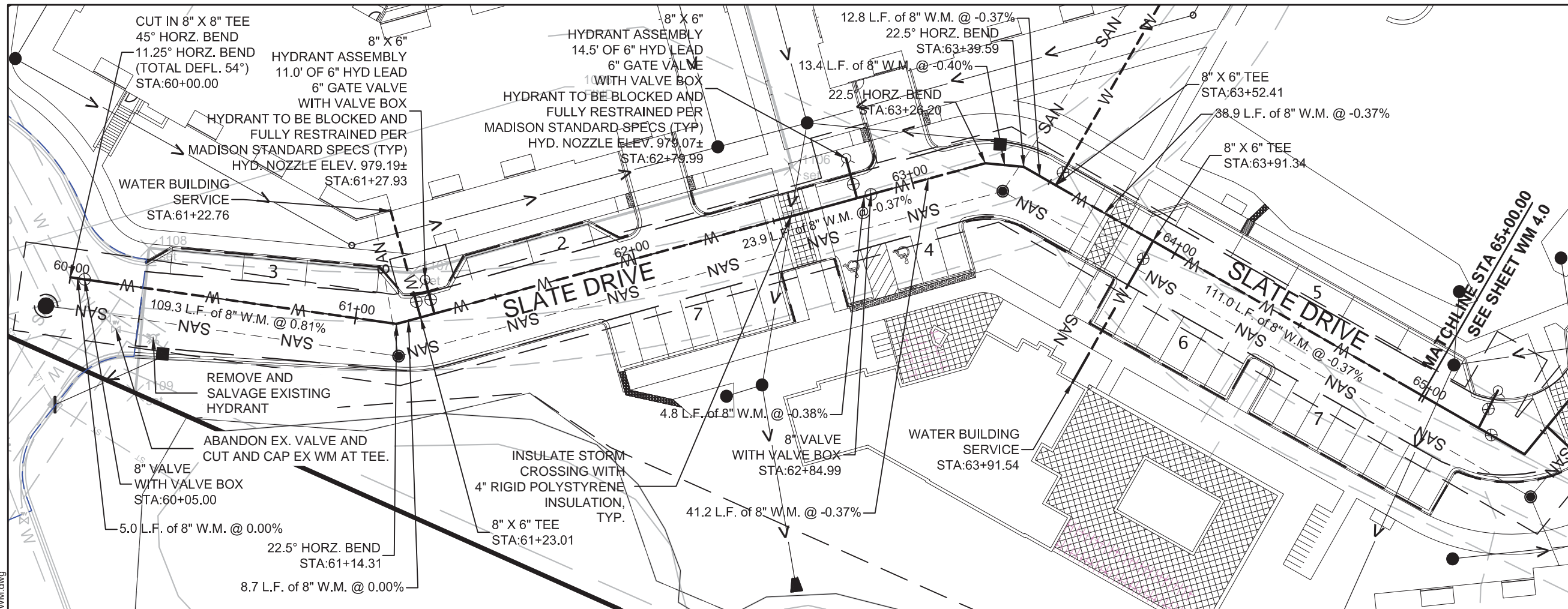


File: I:\Joseph Lee & Associates\15669 Tancho Drive\060 CAD\C - Civil\5000 Production - Civil\Plans\506-Utility Plan\Public\WM\15669-PBL\WM.dwg



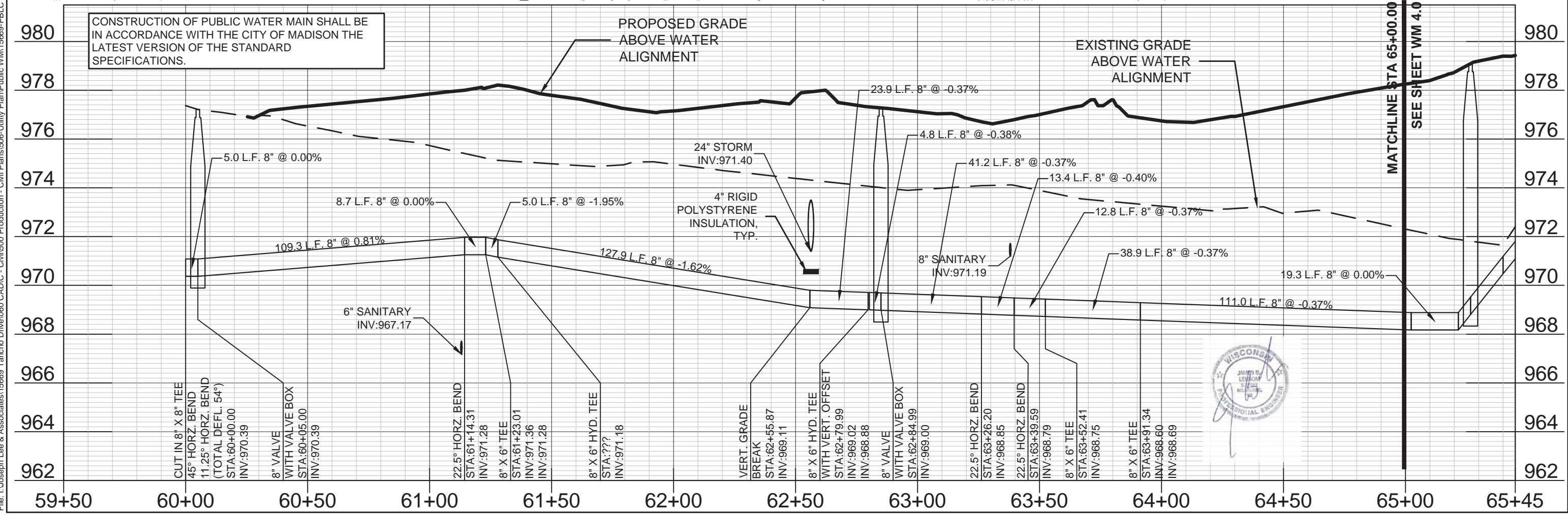
CONSTRUCTION OF PUBLIC WATER MAIN SHALL BE IN ACCORDANCE WITH THE CITY OF MADISON THE LATEST VERSION OF THE STANDARD SPECIFICATIONS.



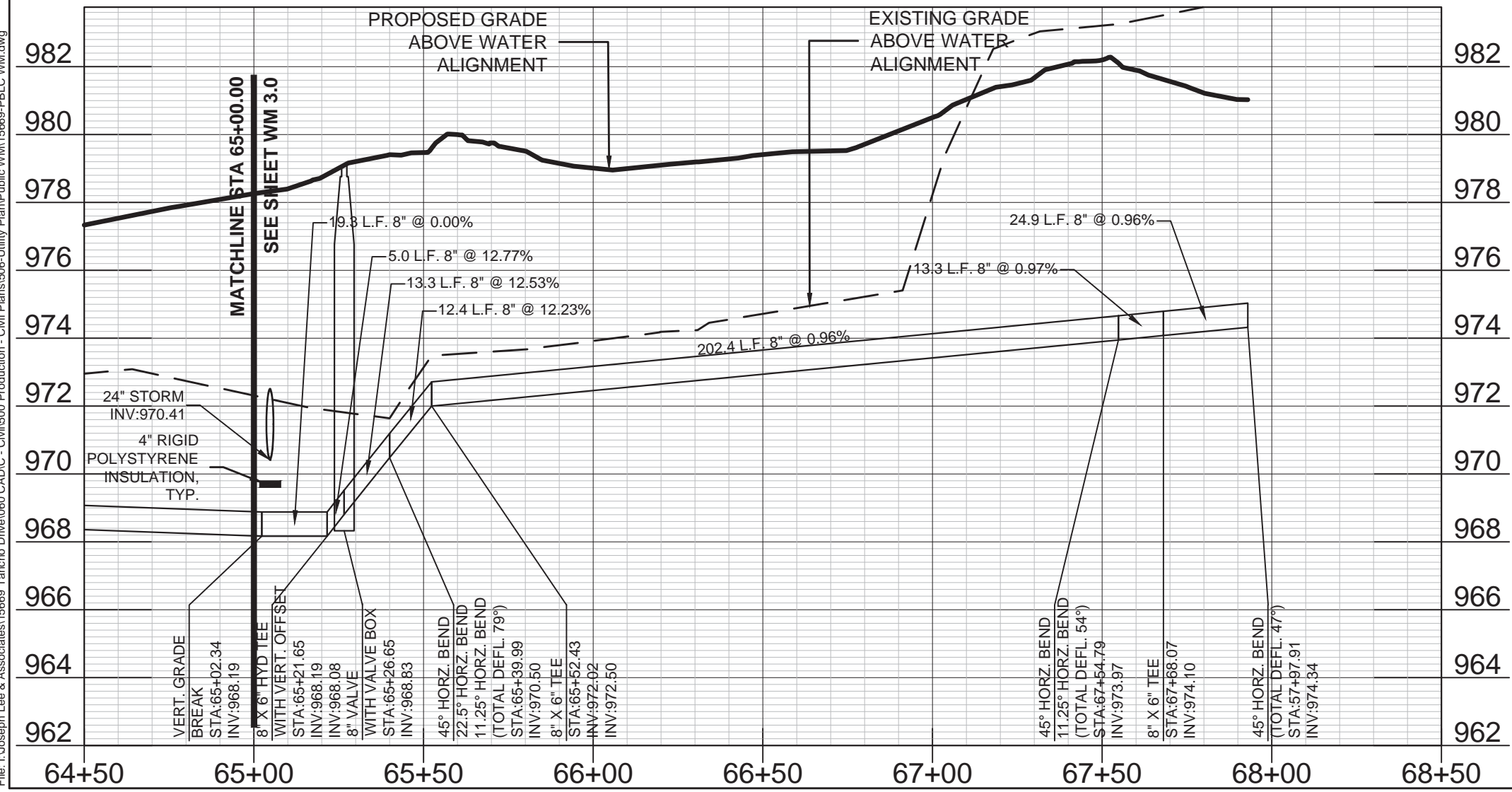
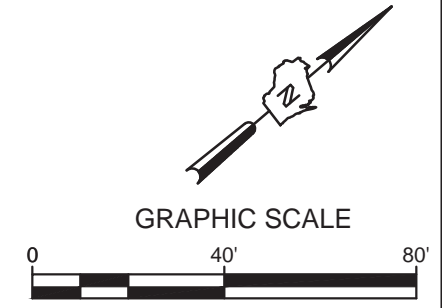
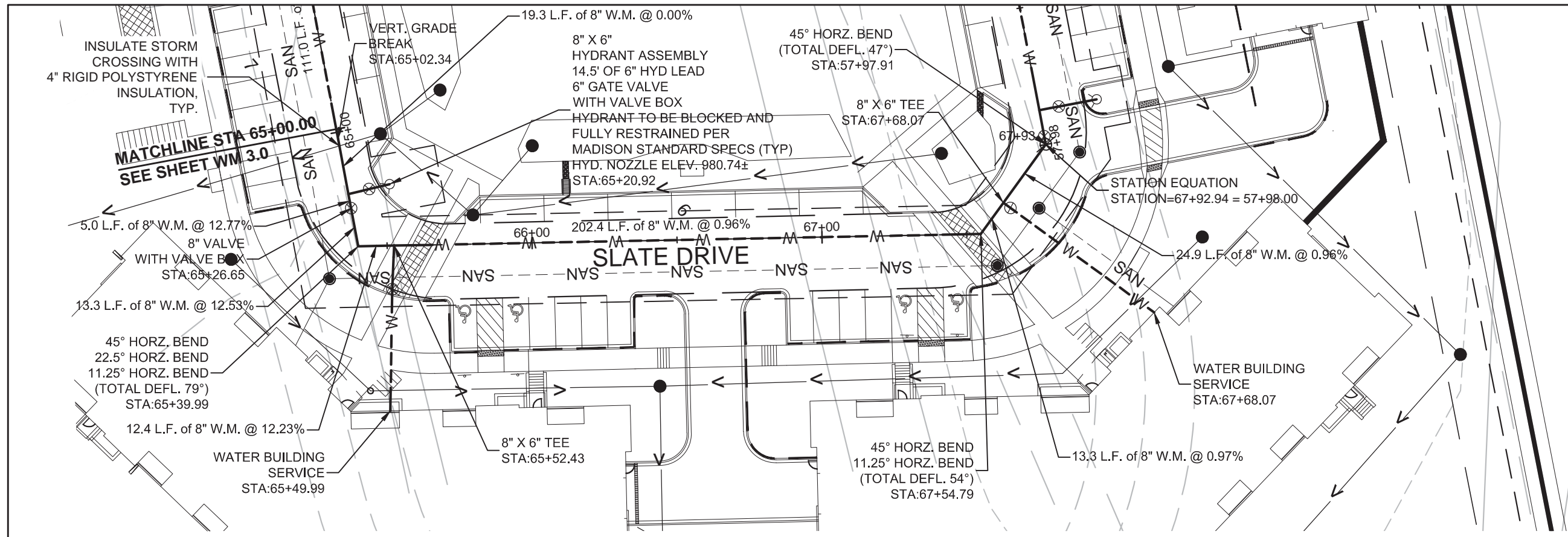


www.thesigmagroup.com
1300 West Canal Street
Milwaukee, WI 53233
Phone: 414-643-4200
Fax: 414-643-4210

SIGMA
GROUP



File: I:\Joseph_Lee & Associates\15669 Tancho Drive\060 CAD\C - Civil\500 Production - Civil\Plans\506-Utility Plan\Public\WM\15669-PBLC_WM.dwg

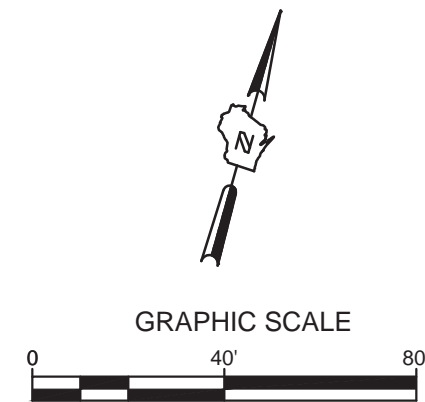
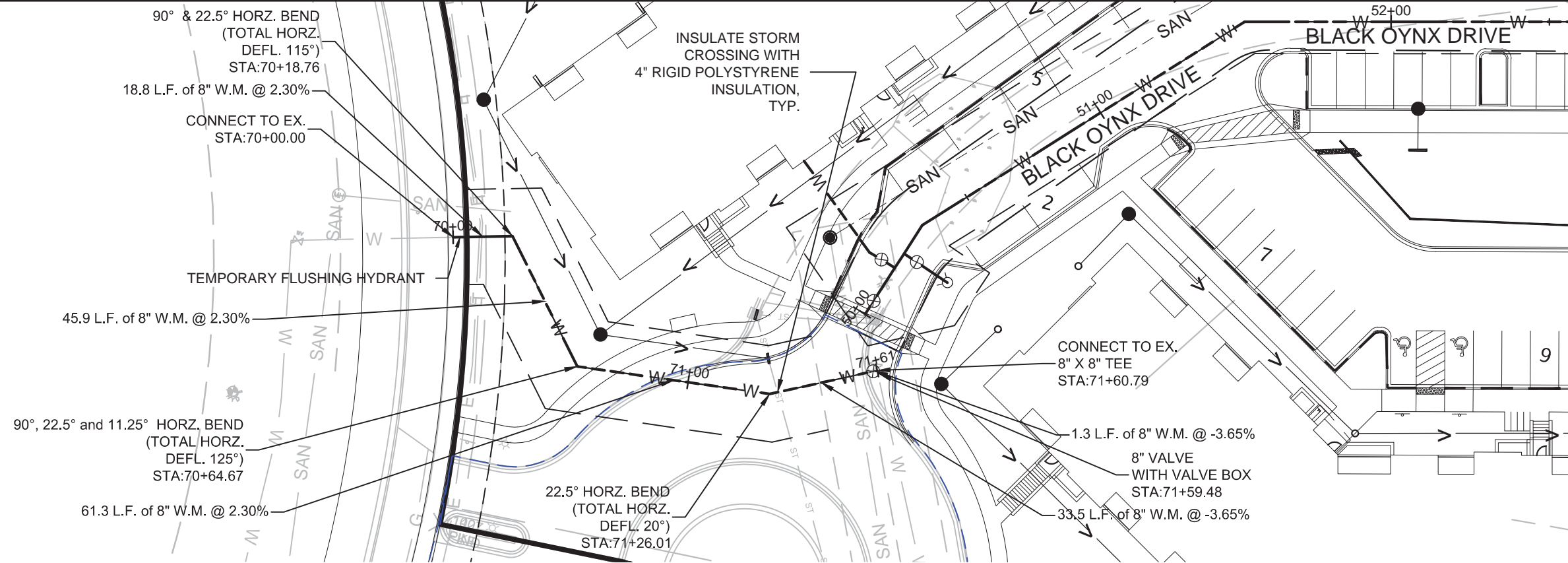


CONSTRUCTION OF PUBLIC WATER MAIN SHALL BE IN ACCORDANCE WITH THE CITY OF MADISON THE LATEST VERSION OF THE STANDARD SPECIFICATIONS.

SIGMA GROUP
www.thesigmagroup.com
1300 West Canal Street
Milwaukee, WI 53233
Phone: 414-643-4200
Fax: 414-643-4210



File: I:\Joseph Lee & Associates\15669 Tancho Drive\060 CAD\C - Civil\500 Production - Civil\Plans\506-Utility Plant\Public\WM\15669-PBLC WM.dwg



www.thesigmagroup.com
1300 West Canal Street
Milwaukee, WI 53233
Phone: 414-643-4200
Fax: 414-643-4210

SIGMA
Single Source. Sound Solutions. GROUP

CONSTRUCTION OF PUBLIC WATER MAIN SHALL BE IN ACCORDANCE WITH THE CITY OF MADISON THE LATEST VERSION OF THE STANDARD SPECIFICATIONS.

