

Madison, Wisconsin

CITY OF MADISON

CITY ENGINEERING DIVISION

DEPARTMENT OF PUBLIC WORKS

PLAN OF PROPOSED IMPROVEMENT

PUBLIC IMPROVEMENT PROJECT APPROVED

JUNE 18, 2002

BY THE COMMON COUNCIL OF MADISON, WISCONSIN

PUBLIC IMPROVEMENT DESIGN APPROVED BY:

[Signature] 7/20/15
City Engineer Date

STREET GRADES DESIGNED BY:

Approved 7/13/15 SS

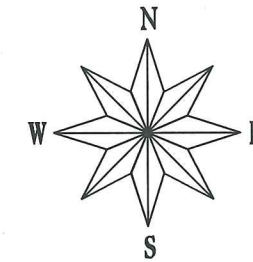
INDEX OF SHEETS

SHEET NO.	TITLE
1	SIDEWALK PLAN

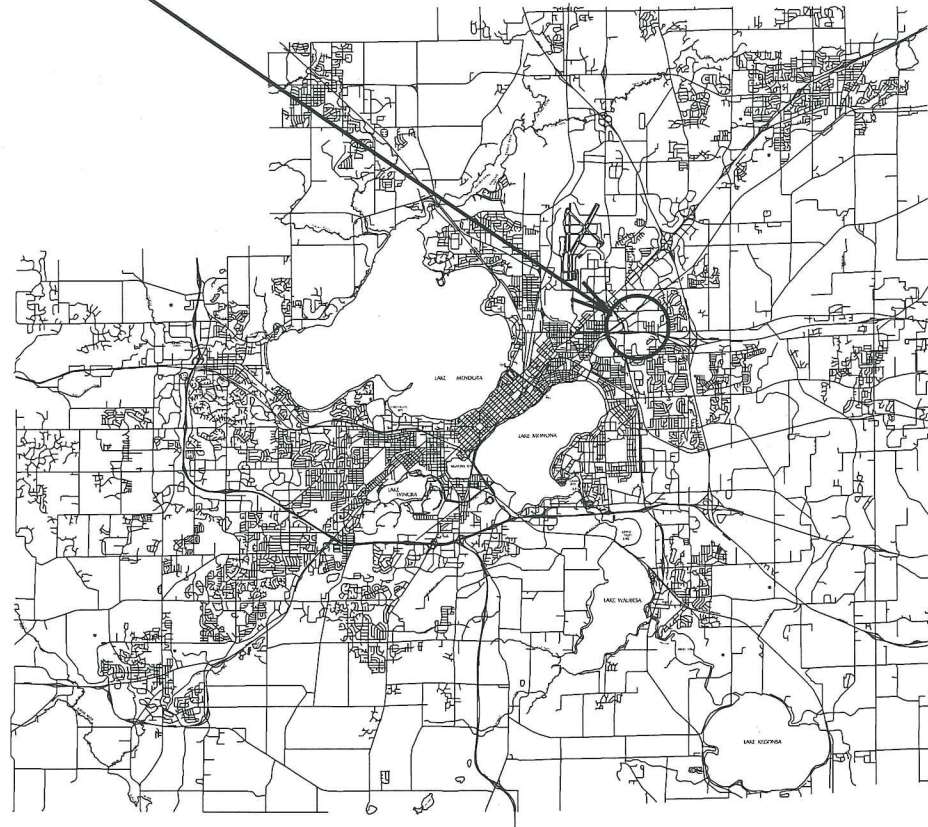
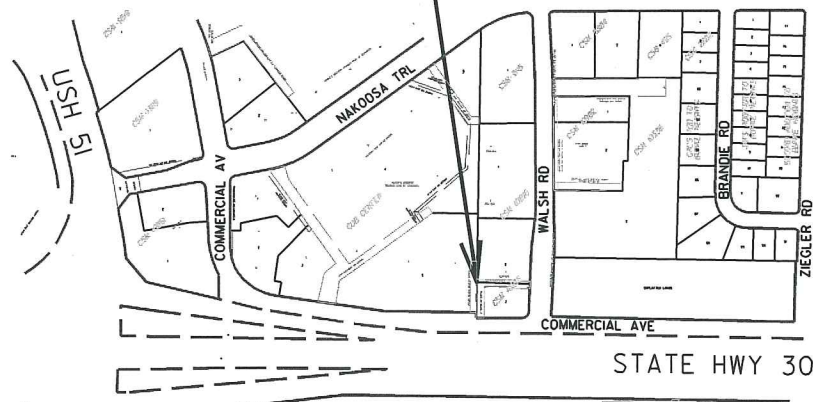
WALSH ROAD CERTIFIED SURVEY MAP

CITY PROJECT NO. 53B1886

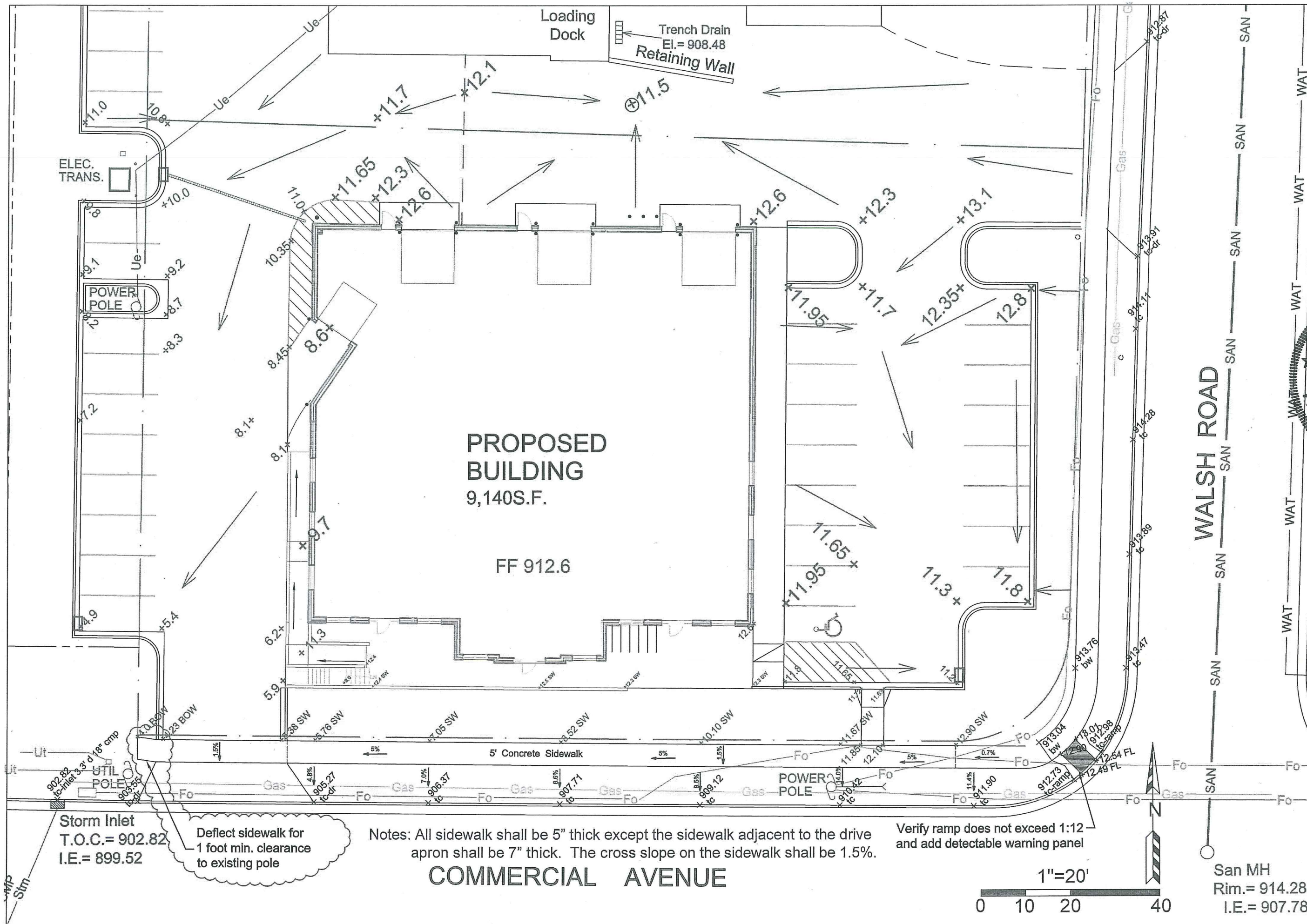
CITY CONTRACT NO. 1886



PROJECT LOCATION



PLOT SCALE: _____
PLOT NAME: _____
REV. DATE: _____
ORIGINATOR: CITY OF MADISON, STREETS DIVISION



PROPOSED BUILDING
9,140S.F.

FF 912.6

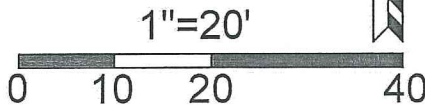
5' Concrete Sidewalk

POWER POLE

Notes: All sidewalk shall be 5" thick except the sidewalk adjacent to the drive apron shall be 7" thick. The cross slope on the sidewalk shall be 1.5%.

Verify ramp does not exceed 1:12 and add detectable warning panel

COMMERCIAL AVENUE



San MH
Rim.= 914.28
I.E.= 907.78

Site Consultant:

HOMBURG
CONTRACTORS, INC.



5590 Monona Drive
Monona, WI 53716
(608) 222-6597
(608) 244-9113 Fax
homburginc.com

GREEN TIER
A DNR program for superior environmental performance

Project:

Crowell Building

4166-4174 Commercial Ave
City of Madison

Issued	Description
8/29/14	Concept Plan
10/8/14	Site Plan Submittal
10/27/14	Revisions
11/13/14	Revised Building
11/18/14	Catch Basins
6/19/15	Sidewalk & HC Stalls
7/16/15	Deflect West End SW

Drawn By: EB, MK

© 2015, Homburg Contractors, Inc.

City Sidewalk Plan

C 2.2