

Madison, Wisconsin

CITY OF MADISON

CITY ENGINEERING DIVISION

DEPARTMENT OF PUBLIC WORKS

PLAN OF PROPOSED IMPROVEMENT

PUBLIC IMPROVEMENT PROJECT APPROVED

SEPTEMBER 17, 2013

BY THE COMMON COUNCIL
OF MADISON, WISCONSIN

PUBLIC IMPROVEMENT DESIGN
APPROVED BY:

[Signature] 9/24/15
City Engineer Date

INDEX OF SHEETS

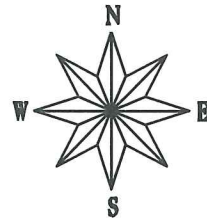
SHEET NO.	TITLE
1	TITLE
D1	STANDARD NOTES
D2	TYPICAL SECTIONS & DETAILS
P1	SIDEWALK AND STREET PLAN
P2	ALLEY PLAN & PROFILE
U1	UTILITY PLAN

448 S. PARK STREET AND 914 DRAKE STREET

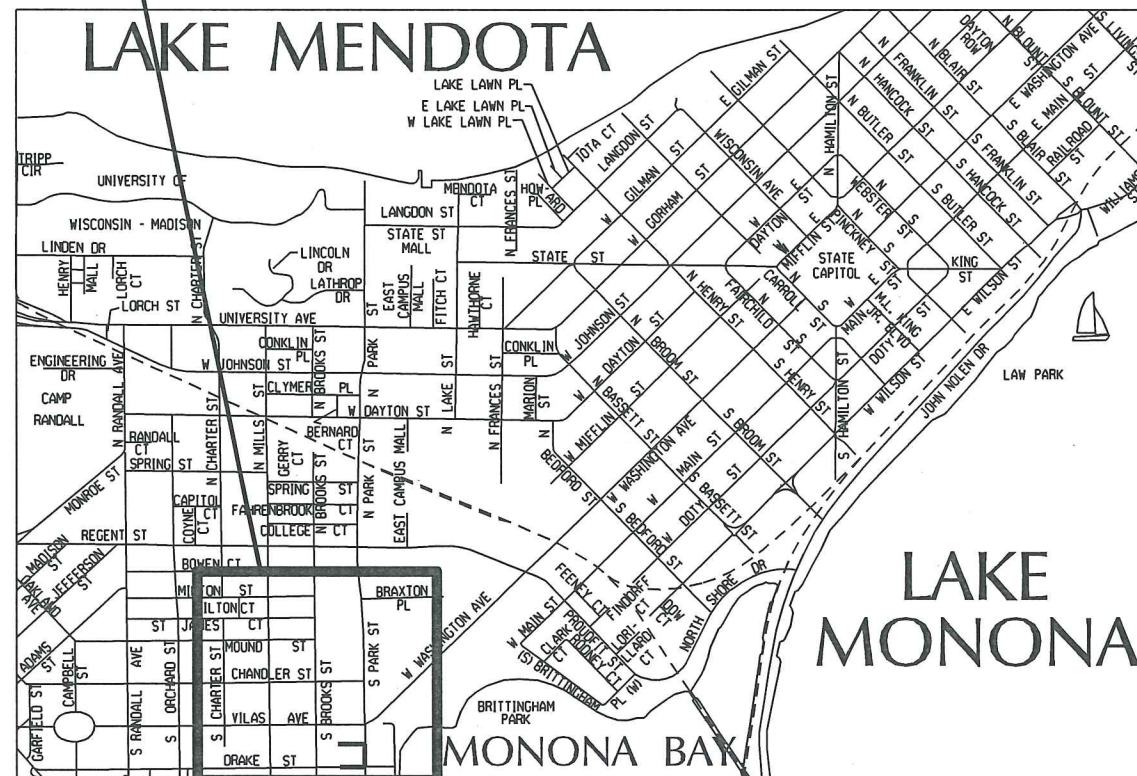
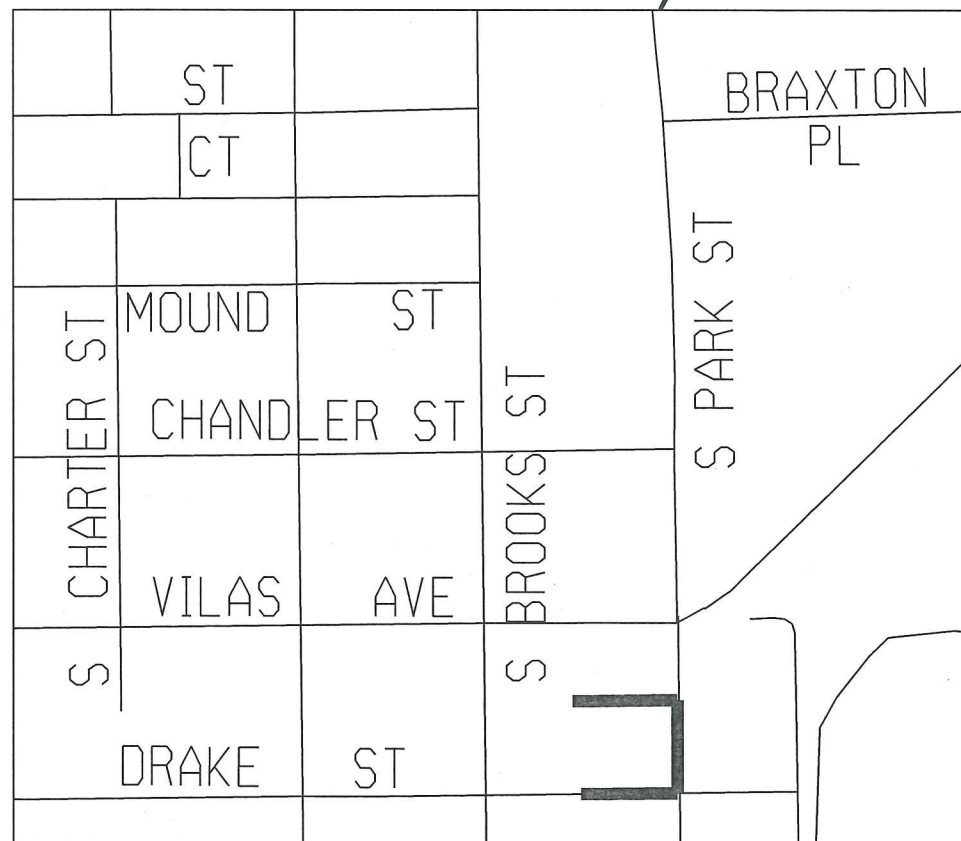
CITY PROJECT NO. 53B2336

CONTRACT NO. 2336

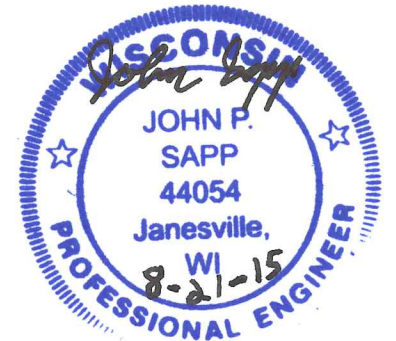
MUNIS NO. 10114



PROJECT
LOCATION



STREET DESIGNED BY:



STORM SEWER DESIGNED BY:



SANITARY SEWER DESIGNED BY:



DETAIL

STANDARD NOTES
AND COMMENTS

CITY OF MADISON

CONTRACTOR/DEVELOPER SHALL SUBMIT A TRAFFIC CONTROL PLAN TO CITY TRAFFIC ENGINEERING AT LEAST 10 WORKING DAYS PRIOR TO THE START OF WORK. WORK WITHIN THE RIGHT-OF-WAY SHALL NOT BEGIN UNTIL THE TRAFFIC CONTROL PLAN IS APPROVED.

ANY PAVEMENT MARKINGS THAT ARE REMOVED OR DAMAGED SHALL BE REPLACED BY THE DEVELOPER/CONTRACTOR AS DIRECTED BY CITY TRAFFIC ENGINEERING.

THE LOCATION AND INFORMATION FOR PROPOSED NEW TREES, IN THE PUBLIC RIGHT OF WAY OR ON PUBLIC LANDS ARE APPROXIMATE AND ARE SHOWN FOR REFERENCE ONLY.

CONTRACTOR SHALL CONTACT DEAN KAHL WITH CITY FORESTRY (266-4891 OR 266-4816) AT LEAST ONE WEEK PRIOR TO PLANTING TO ALLOW FORESTRY TO MARK THE PLANTING SITES AND REVIEW PLANTING SPECIFICATIONS WITH THE LANDSCAPING CONTRACTOR. TREE PLANTING WITHIN THE PUBLIC RIGHT OF WAY OR ON PUBLIC LANDS SHALL BE APPROVED BY THE CITY FORESTER PRIOR TO INSTALLATION.

NO TREES IN THE RIGHT OF WAY OR ON PUBLIC LANDS SHALL BE TRIMMED, PRUNED, REMOVED OR ADVERSELY AFFECTED IN ANY WAY UNTIL THE DEVELOPER HAS RECEIVED WRITTEN PERMISSION FROM THE CITY ENGINEER OR CITY FORESTER. SAID WRITTEN PERMISSION SHALL INCLUDE LANGUAGE INDICATING THAT SECTION 10.101 OF THE MADISON GENERAL ORDINANCES AND ADMINISTRATIVE PROCEDURE MEMORANDUM NO. 6-2, REFERRING TO NOTIFICATION OF PROPERTY OCCUPANTS AND/OR OWNERS, HAS BEEN COMPLIED WITH.

ALL PAVEMENT WITHIN THE PARK STREET RIGHT-OF-WAY SHALL BE 10" DOWELED CONCRETE PAVEMENT.

ALL GUTTERS SHALL DRAIN WITH A MINIMUM GRADES OF 0.5% TOWARD STORM SEWER INLETS.

THE CROSS SLOPE OF SIDEWALKS AND BARRIER FREE SIDEWALK CURB RAMPS SHALL BE 2%. THE LONGITUDINAL GRADE OF BARRIER FREE SIDEWALK CURB RAMPS SHALL NOT EXCEED 8.33%. ALL SIDEWALK RAMPS SHALL BE CONSTRUCTED ACCORDING TO S.D.D. 3.03. AT ALL OTHER LOCATIONS THE LONGITUDINAL GRADE OF SIDEWALKS SHALL NOT EXCEED 5.0 % OR THE ADJACENT STREET GRADE WHICHEVER IS GREATER NOR BE LESS THAN 0.4% AND SHALL DRAIN TOWARD STORM SEWER INLETS. SIDE SLOPES WITHIN TEN FEET OF A PUBLIC SIDEWALK SHALL NOT EXCEED 4.00:1. ALL SIDEWALK AND SIDEWALK RAMP ELEVATIONS AND GRADES SHALL BE FIELD VERIFIED AND SET TO COMPLY WITH THE CITY OF MADISON STANDARD SPECIFICATIONS AND THE A.D.A. GUIDELINES.

OBTAIN A PRINT OUT OF THE ALIGNMENT FROM THE CITY ENGINEER PRIOR TO STAKING THIS PROJECT.

CURB STATION AND OFFSETS SHALL BE TO THE FACE OF CURB UNLESS OTHERWISE INDICATED. CURB ELEVATIONS SHALL BE TO THE TOP OF CURB (OR EXTENDED TOP OF CURB FOR DRIVEWAYS OR RAMPS) UNLESS OTHERWISE INDICATED.

POWER POLES AND OTHER OBSTRUCTIONS SHALL BE MOVED TO PROVIDE 2 FEET MINIMUM OF CLEAR DISTANCE FROM ANY FACE OF CURB OR EDGE OF SIDEWALK.

ANY INFORMATION SHOWN ON THIS PLAN, WHICH IS NOT PART OF THIS PROJECT, IS PRELIMINARY AND NOT FOR CONSTRUCTION.

THERE MAY BE EXISTING UTILITIES OR OTHER FEATURES WHICH ARE EITHER NOT SHOWN OR SHOWN INCORRECTLY ON THIS PLAN. IT IS THE RESPONSIBILITY OF THE DEVELOPER TO LOCATE AND IDENTIFY ALL UTILITIES AND TOPOGRAPHY WHICH MAY AFFECT THE CONSTRUCTION OF THESE IMPROVEMENTS.

ALL PERMANENT SIGNING AND POSTING WILL BE DETERMINED AND PROVIDED BY THE TRAFFIC ENGINEERING DIVISION, FOLLOWING CONSTRUCTION OF THESE IMPROVEMENTS.

THE DEVELOPER SHALL PROVIDE, INSTALL AND MAINTAIN ALL STREET END BARRICADES, SIGNING AND TRAFFIC CONTROL, AS REQUIRED BY THE CITY TRAFFIC ENGINEER.

PAVEMENT SAWCUTS SHALL BE AS DIRECTED BY THE CITY CONSTRUCTION ENGINEER. SAWCUTS SHOWN ON THE PLAN ARE APPROXIMATE.

DAMAGE TO ANY EXISTING CURB, PAVEMENT, SIDEWALK, ETC. THAT IS TO REMAIN SHALL BE REPAIRED BY THE DEVELOPER/CONTRACTOR AS DIRECTED BY THE ENGINEER.

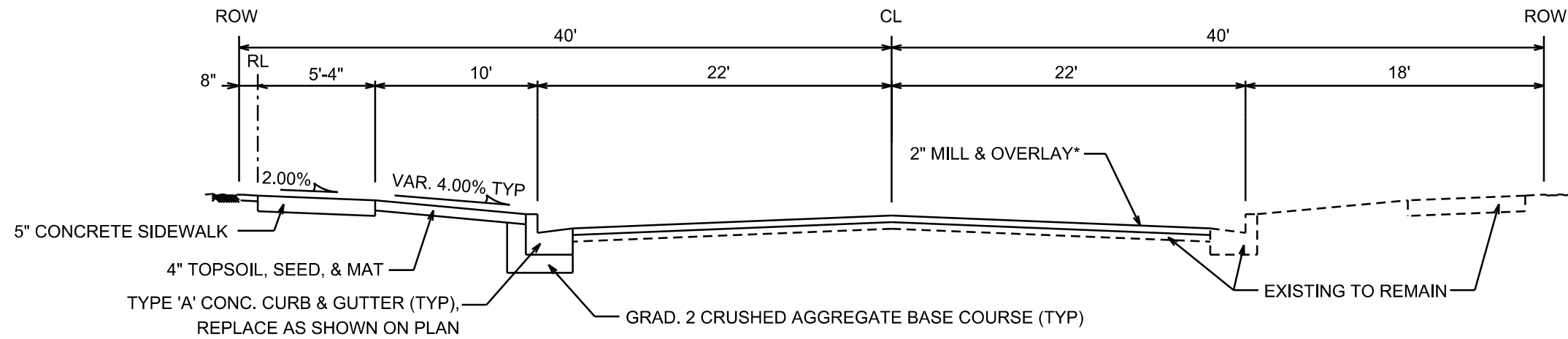
CONVENTIONAL SIGNS	
FIELD VERIFY ALL UTILITY LOCATIONS	
GAS	
STORM SEWER	
SANITARY SEWER	
WATER	
OVERHEAD ELECTRIC	
UW STEAM TUNNEL	
POWER POLE	
ADA COMPLIANT RAMP W/ DETECTABLE WARNING FIELD	
COMBUSTIBLE FLUIDS	

PLOT SCALE: _____

PLOT NAME: _____

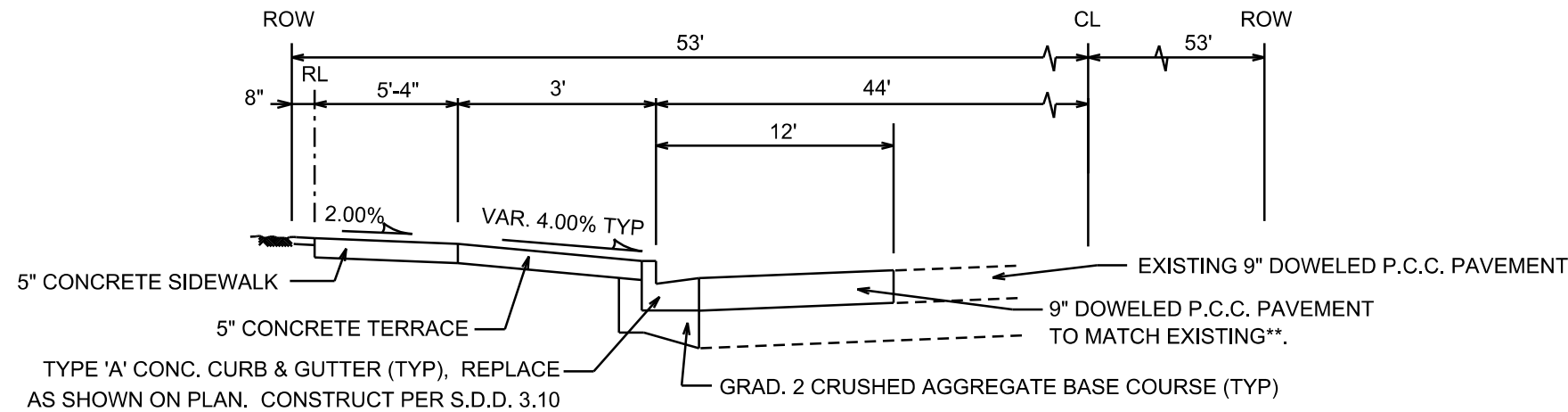
REV. DATE: _____

ORIGINATOR: CITY OF MADISON, STREETS DIVISION



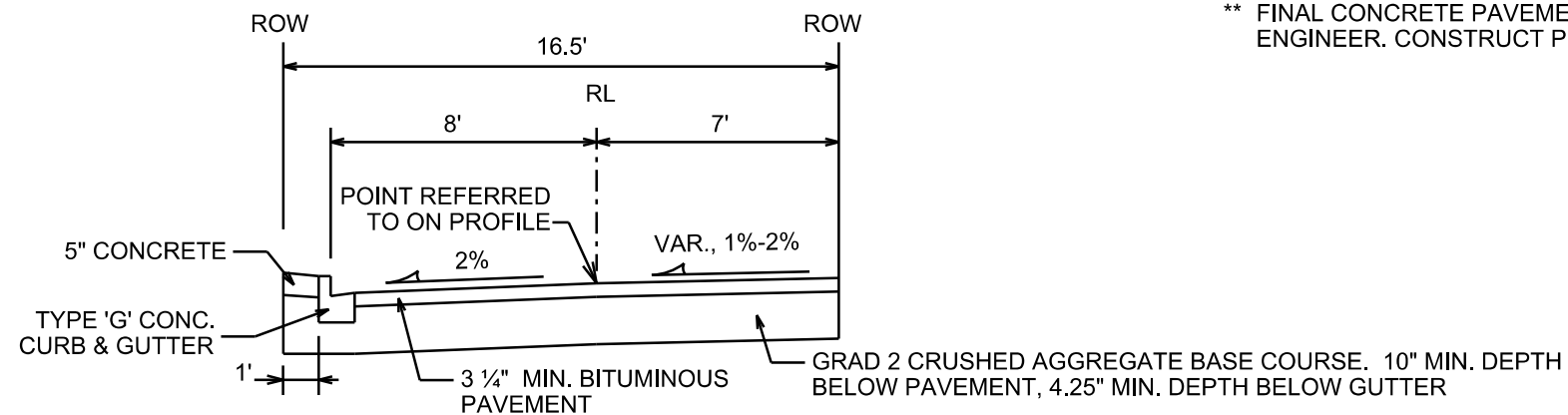
TYPICAL SECTION

DRAKE ST
NOT TO SCALE



TYPICAL SECTION

PARK ST
NOT TO SCALE



TYPICAL SECTION

ALLEY BETWEEN PARK ST. & BROOKS ST.
NOT TO SCALE

NOTES:

* MILL & OVERLAY LIMITS ARE APPROXIMATE. PATCH PAVEMENT PER CITY'S PATCHING CRITERIA. MILL & OVERLAY MAY NOT BE NECESSARY IF PAVEMENT IS UNDAMAGED, AS DECIDED BY THE CONSTRUCTION ENGINEER. FINAL MILL & OVERLAY LIMITS TO BE DETERMINED BY THE CONSTRUCTION ENGINEER.

** FINAL CONCRETE PAVEMENT LIMITS TO BE DETERMINED BY THE CONSTRUCTION ENGINEER. CONSTRUCT PER S.D.D. 3.10 AND S.D.D. 3.11

PLOT SCALE: _____

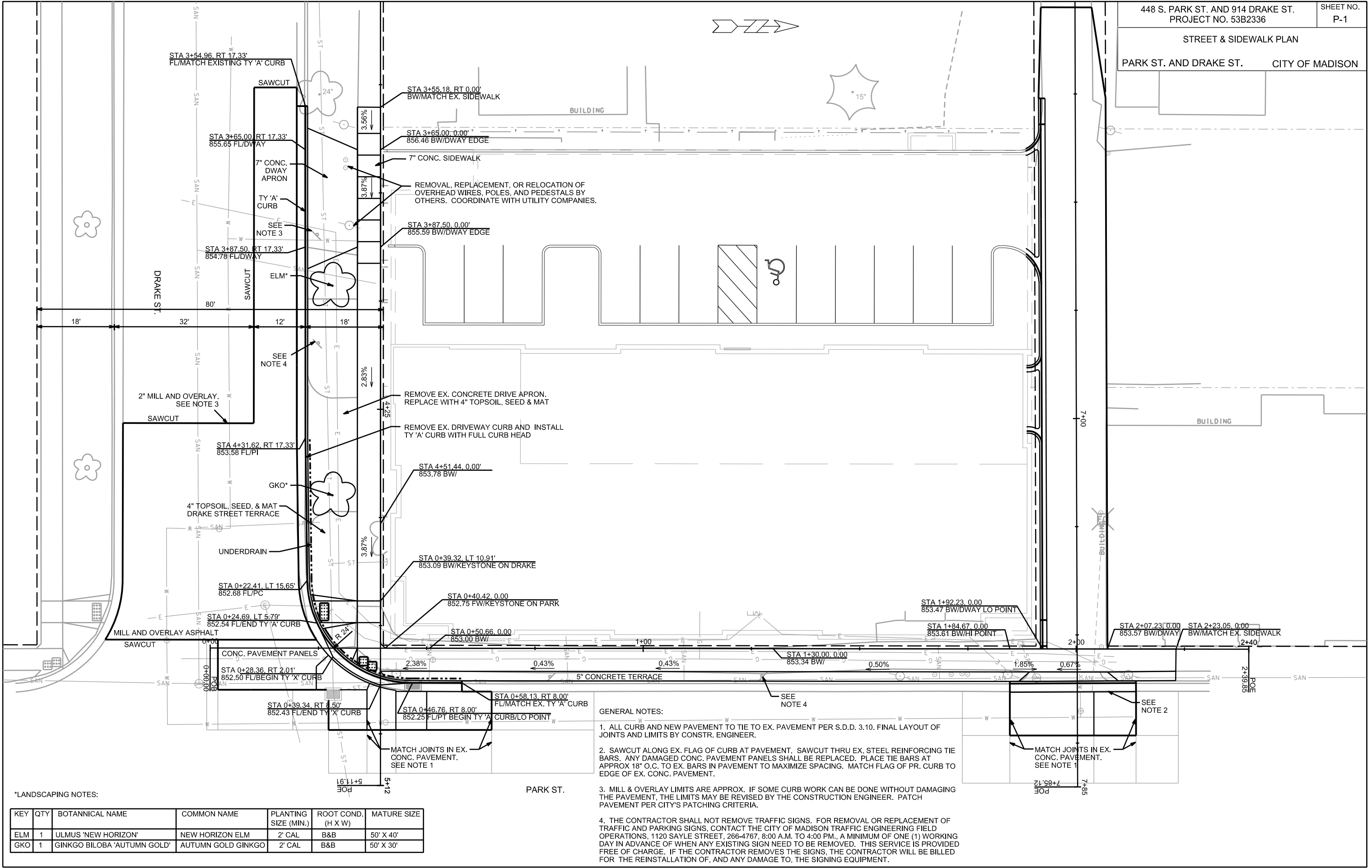
PLOT NAME: _____

REV. DATE: _____

ORIGINATOR: CITY OF MADISON, STREETS DIVISION

STREET & SIDEWALK PLAN

PARK ST. AND DRAKE ST. CITY OF MADISON



GENERAL NOTES:

1. ALL CURB AND NEW PAVEMENT TO TIE TO EX. PAVEMENT PER S.D.D. 3.10. FINAL LAYOUT OF JOINTS AND LIMITS BY CONSTR. ENGINEER.
2. SAWCUT ALONG EX. FLAG OF CURB AT PAVEMENT. SAWCUT THRU EX. STEEL REINFORCING TIE BARS. ANY DAMAGED CONC. PAVEMENT PANELS SHALL BE REPLACED. PLACE TIE BARS AT APPROX 18" O.C. TO EX. BARS IN PAVEMENT TO MAXIMIZE SPACING. MATCH FLAG OF PR. CURB TO EDGE OF EX. CONC. PAVEMENT.
3. MILL & OVERLAY LIMITS ARE APPROX. IF SOME CURB WORK CAN BE DONE WITHOUT DAMAGING THE PAVEMENT, THE LIMITS MAY BE REVISED BY THE CONSTRUCTION ENGINEER. PATCH PAVEMENT PER CITY'S PATCHING CRITERIA.
4. THE CONTRACTOR SHALL NOT REMOVE TRAFFIC SIGNS. FOR REMOVAL OR REPLACEMENT OF TRAFFIC AND PARKING SIGNS, CONTACT THE CITY OF MADISON TRAFFIC ENGINEERING FIELD OPERATIONS, 1120 SAYLE STREET, 266-4767, 8:00 A.M. TO 4:00 P.M., A MINIMUM OF ONE (1) WORKING DAY IN ADVANCE OF WHEN ANY EXISTING SIGN NEED TO BE REMOVED. THIS SERVICE IS PROVIDED FREE OF CHARGE. IF THE CONTRACTOR REMOVES THE SIGNS, THE CONTRACTOR WILL BE BILLED FOR THE REINSTALLATION OF, AND ANY DAMAGE TO, THE SIGNING EQUIPMENT.

*LANDSCAPING NOTES:

KEY	QTY	BOTANICAL NAME	COMMON NAME	PLANTING SIZE (MIN.)	ROOT COND. (H X W)	MATURE SIZE
ELM	1	ULMUS 'NEW HORIZON'	NEW HORIZON ELM	2' CAL	B&B	50' X 40'
GKO	1	GINKGO BILOBA 'AUTUMN GOLD'	AUTUMN GOLD GINKGO	2' CAL	B&B	50' X 30'

PLOT SCALE: _____

PLOT NAME: _____

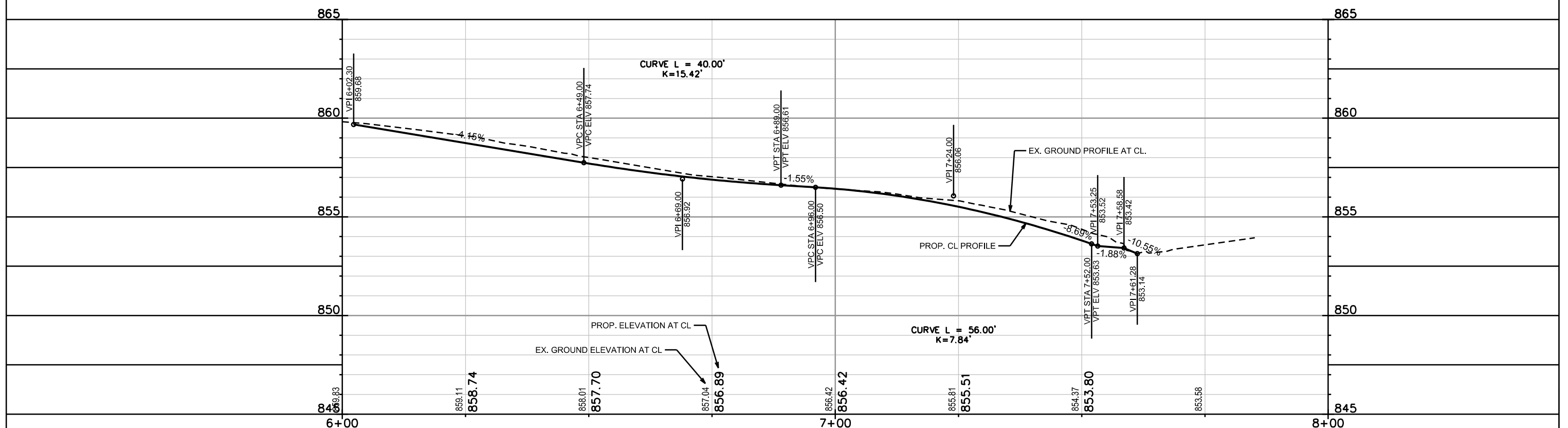
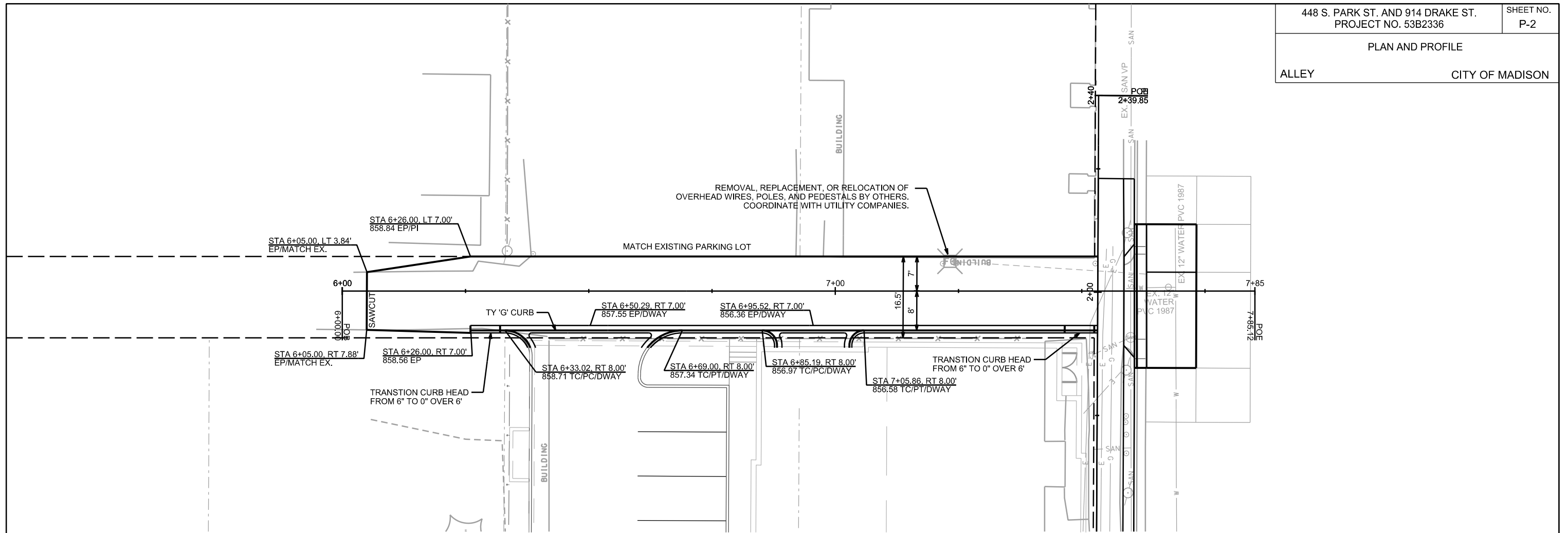
REV. DATE: _____

ORIGINATOR: CITY OF MADISON, STREETS DIVISION

PLAN AND PROFILE

ALLEY

CITY OF MADISON

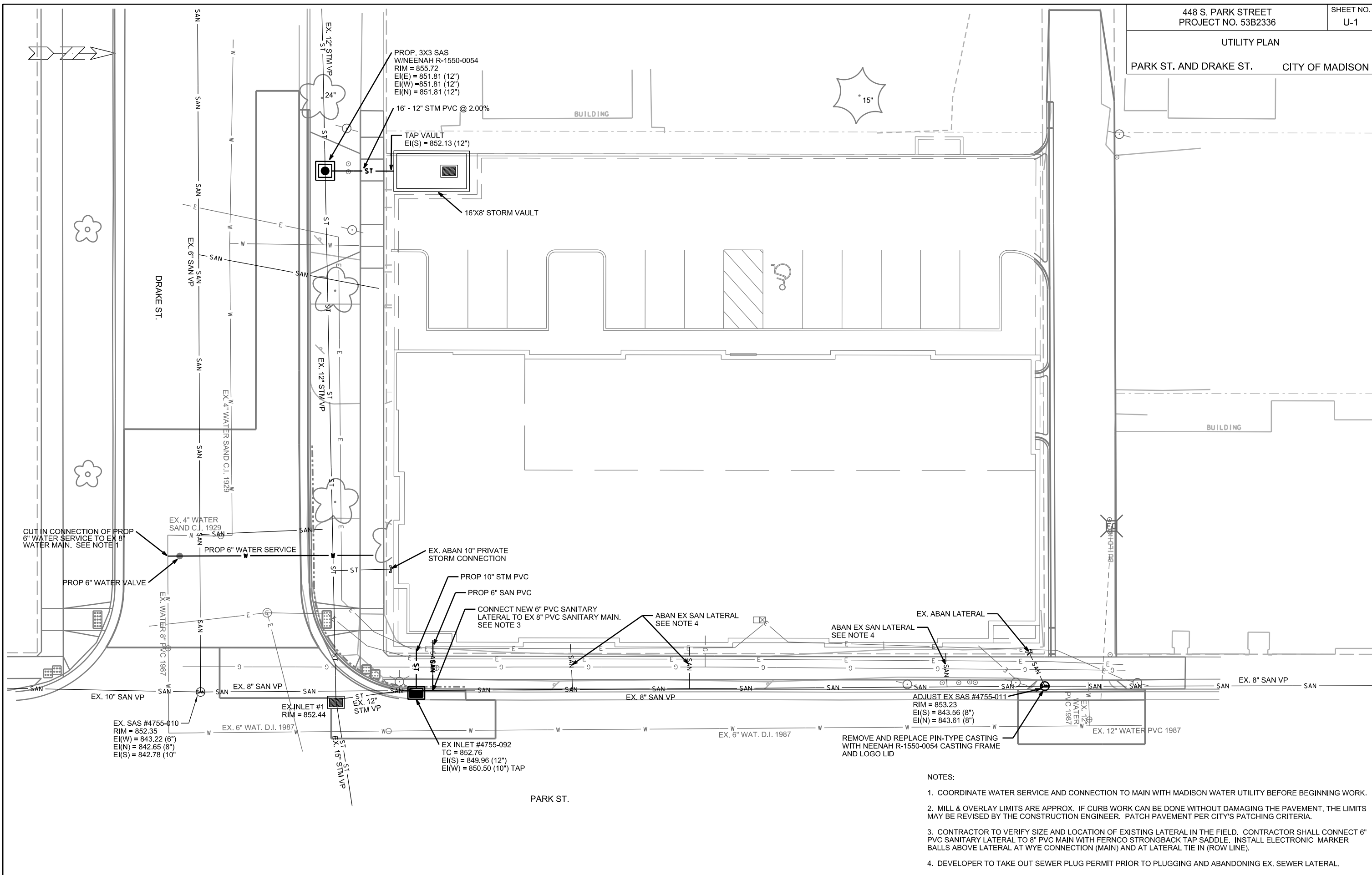


PLOT SCALE: _____

PLOT NAME: _____

REV. DATE: _____

ORIGINATOR: CITY OF MADISON, STREETS DIVISION



- NOTES:
1. COORDINATE WATER SERVICE AND CONNECTION TO MAIN WITH MADISON WATER UTILITY BEFORE BEGINNING WORK.
 2. MILL & OVERLAY LIMITS ARE APPROX. IF CURB WORK CAN BE DONE WITHOUT DAMAGING THE PAVEMENT, THE LIMITS MAY BE REVISED BY THE CONSTRUCTION ENGINEER. PATCH PAVEMENT PER CITY'S PATCHING CRITERIA.
 3. CONTRACTOR TO VERIFY SIZE AND LOCATION OF EXISTING LATERAL IN THE FIELD. CONTRACTOR SHALL CONNECT 6" PVC SANITARY LATERAL TO 8" PVC MAIN WITH FERNCO STRONGBACK TAP SADDLE. INSTALL ELECTRONIC MARKER BALLS ABOVE LATERAL AT WYE CONNECTION (MAIN) AND AT LATERAL TIE IN (ROW LINE).
 4. DEVELOPER TO TAKE OUT SEWER PLUG PERMIT PRIOR TO PLUGGING AND ABANDONING EX. SEWER LATERAL.

PLOT SCALE: _____

PLOT NAME: _____

REV. DATE: _____

ORIGINATOR: CITY OF MADISON, STREETS DIVISION