

Madison, Wisconsin

CITY OF MADISON

CITY ENGINEERING DIVISION

DEPARTMENT OF PUBLIC WORKS

PLAN OF PROPOSED IMPROVEMENT

PUBLIC IMPROVEMENT PROJECT APPROVED

APRIL 8, 2014

BY THE COMMON COUNCIL OF MADISON, WISCONSIN

PUBLIC IMPROVEMENT DESIGN APPROVED BY:

[Signature] 9/28/15
City Engineer Date

WATER AND STORM & SANITARY SEWERS CONNECTIONS DESIGNED BY:

SEE C300 & C301 SHEETS

INDEX OF SHEETS

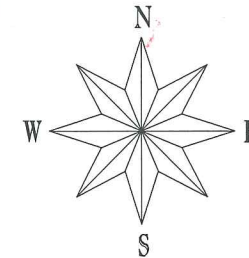
SHEET NO.	TITLE
1	DETAILS <i>Rev. 2016 07-13 JPS</i>
D1-D2 D3	STREET & SIDEWALK OVERVIEW PLAN
P1	N. PATERSON ST. STREET PLAN & PROFILE
X1-X2	N. PATERSON ST. CROSS SECTIONS
C300	WATER AND STORM & SANITARY SEWERS CONNECTIONS UTILITY PLAN
C301	WATER AND STORM & SANITARY SEWERS CONNECTIONS SCHEDULE
U1	N. PATERSON ST. STORM SEWER PLAN & PROFILE
U2	N. PATERSON ST. STORM SEWER SCHEDULE
M1-M2	MARKING PLAN
E1-E5	ELECTRICAL PLAN
L1	LANDSCAPING PLAN

802-854 E. WASHINGTON AVENUE - GALEXIE

CITY PROJECT NO. 53B2371

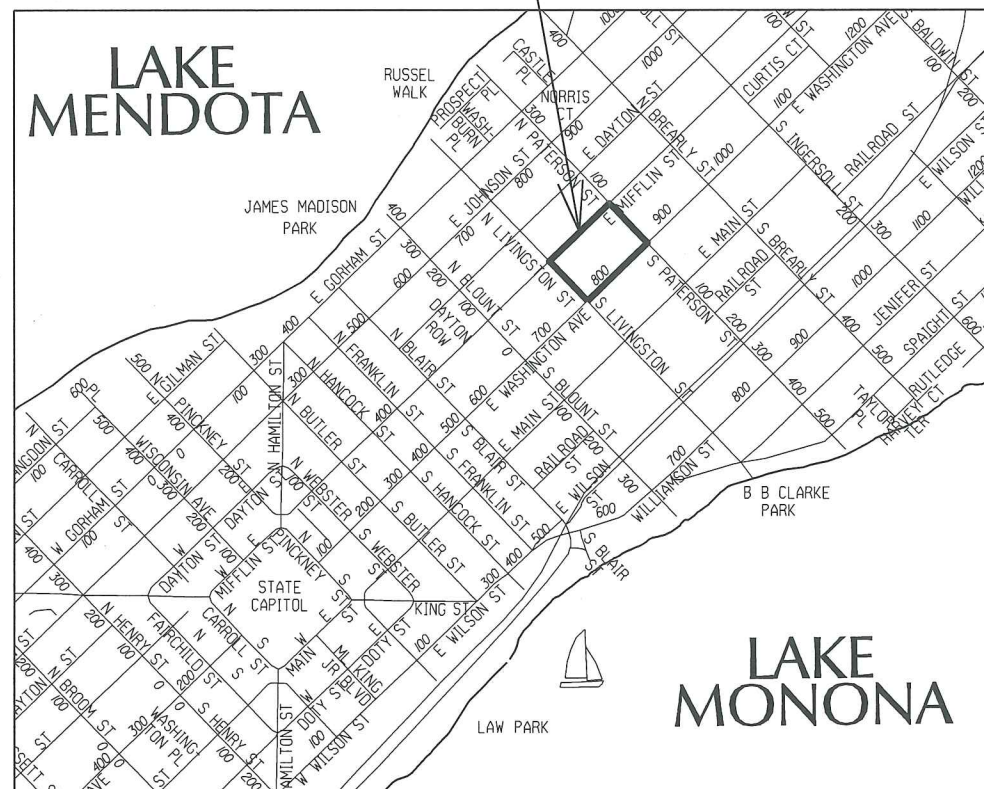
CITY CONTRACT NO. 2371

MUNIS NO. 10191



CONSTRUCTION PROJECT LOCATION

CONVENTIONAL SIGNS	
FIELD VERIFY ALL UTILITY LOCATIONS	
GAS	— G —
STORM SEWER	— ST —
SANITARY SEWER	— SAN —
WATER	— W —
OVERHEAD ELECTRIC	— OH —
POWER POLE	⊕
ADA COMPLIANT RAMP W/ DETECTABLE WARNING FIELD	
COMBUSTIBLE FLUIDS	



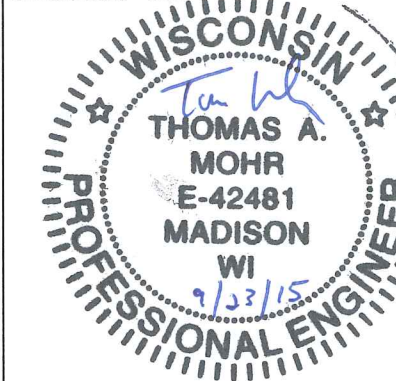
ELECTRICAL PLAN DESIGNED BY:



N. PATERSON ST. STORM SEWER DESIGNED BY:



MARKING PLAN DESIGNED BY:



STREET DESIGNED BY:



NOTES:

ALL GUTTERS SHALL DRAIN WITH A MINIMUM GRADE OF 0.50% TOWARD STORM SEWER INLETS.

SIDEWALK RAMPS AND CURB THRU SIDEWALK RAMPS SHALL HAVE A MAXIMUM SLOPE OF 1" PER 12". SIDEWALK AND CURB RAMPS SHALL BE CONSTRUCTED WITH A SIDE SLOPE OF 2.00%.

SIDEWALK SHALL HAVE A MINIMUM LONGITUDINAL SLOPE OF 0.50% AND A MAXIMUM LONGITUDINAL SLOPE OF 5.00% EXCEPT WHERE STREET GRADES EXCEED 5.00%.

PLOT SCALE:

PLOT NAME:

REV. DATE:

ORIGINATOR: CITY OF MADISON, STREETS DIVISION

CONTRACTOR/DEVELOPER SHALL SUBMIT A TRAFFIC CONTROL PLAN TO CITY TRAFFIC ENGINEERING AT LEAST 10 WORKING DAYS PRIOR TO THE START OF WORK. WORK WITHIN THE RIGHT-OF-WAY SHALL NOT BEGIN UNTIL THE TRAFFIC CONTROL PLAN IS APPROVED.

ANY PAVEMENT MARKINGS THAT ARE REMOVED OR DAMAGED SHALL BE REPLACED BY THE DEVELOPER/CONTRACTOR AS DIRECTED BY CITY TRAFFIC ENGINEERING.

THE LOCATION AND INFORMATION FOR PROPOSED NEW TREES, IN THE PUBLIC RIGHT OF WAY OR ON PUBLIC LANDS ARE APPROXIMATE AND ARE SHOWN FOR REFERENCE ONLY.

CONTRACTOR SHALL CONTACT DEAN KAHL WITH CITY FORESTRY (266-4891 OR 266-4816) AT LEAST ONE WEEK PRIOR TO PLANTING TO ALLOW FORESTRY TO MARK THE PLANTING SITES AND REVIEW PLANTING SPECIFICATIONS WITH THE LANDSCAPING CONTRACTOR. TREE PLANTING WITHIN THE PUBLIC RIGHT OF WAY OR ON PUBLIC LANDS SHALL BE APPROVED BY THE CITY FORESTER PRIOR TO INSTALLATION.

NO TREES IN THE RIGHT OF WAY OR ON PUBLIC LANDS SHALL BE TRIMMED, PRUNED, REMOVED OR ADVERSELY AFFECTED IN ANY WAY UNTIL THE DEVELOPER HAS RECEIVED WRITTEN PERMISSION FROM THE CITY ENGINEER OR CITY FORESTER. SAID WRITTEN PERMISSION SHALL INCLUDE LANGUAGE INDICATING THAT SECTION 10.101 OF THE MADISON GENERAL ORDINANCES AND ADMINISTRATIVE PROCEDURE MEMORANDUM NO. 6-2, REFERING TO NOTIFICATION OF PROPERTY OCCUPANTS AND/OR OWNERS, HAS BEEN COMPLIED WITH.

ALL PAVEMENT WITHIN THE EAST WASHINGTON AVENUE RIGHT-OF-WAY SHALL BE 10" DOWELED CONCRETE PAVEMENT.

ALL PAVEMENT WITHIN THE NORTH PATERSON STREET RIGHT-OF-WAY SHALL BE TYPE B PAVEMENT.

ALL GUTTERS SHALL DRAIN WITH A MINIMUM GRADES OF 0.4% TOWARD STORM SEWER INLETS.

THE CROSS SLOPE OF SIDEWALKS AND BARRIER FREE SIDEWALK CURB RAMPS SHALL BE 1.5%. THE LONGITUDINAL GRADE OF BARRIER FREE SIDEWALK CURB RAMPS SHALL NOT EXCEED 8.33%. ALL SIDEWALK RAMPS SHALL BE CONSTRUCTED ACCORDING TO S.D.D. 3.03. AT ALL OTHER LOCATIONS THE LONGITUDINAL GRADE OF SIDEWALKS SHALL NOT EXCEED 5.0 % OR THE ADJACENT STREET GRADE WHICHEVER IS GREATER NOR BE LESS THAN 0.4% AND SHALL DRAIN TOWARD STORM SEWER INLETS. SIDE SLOPES WITHIN TEN FEET OF A PUBLIC SIDEWALK SHALL NOT EXCEED 4:00:1. ALL SIDEWALK AND SIDEWALK RAMP ELEVATIONS AND GRADES SHALL BE FIELD VERIFIED AND SET TO COMPLY WITH THE CITY OF MADISON STANDARD SPECIFICATIONS AND THE A.D.A. GUIDELINES.

OBTAIN A PRINT OUT OF THE ALIGNMENT FROM THE CITY ENGINEER PRIOR TO STAKING THIS PROJECT.

CURB STATION AND OFFSETS SHALL BE TO THE FACE OF CURB UNLESS OTHERWISE INDICATED. CURB ELEVATIONS SHALL BE TO THE TOP OF CURB (OR EXTENDED TOP OF CURB FOR DRIVEWAYS OR RAMPS) UNLESS OTHERWISE INDICATED.

POWER POLES AND OTHER OBSTRUCTIONS SHALL BE MOVED TO PROVIDE 2 FEET MINIMUM OF CLEAR DISTANCE FROM ANY FACE OF CURB OR EDGE OF SIDEWALK.

ANY INFORMATION SHOWN ON THIS PLAN, WHICH IS NOT PART OF THIS PROJECT, IS PRELIMINARY AND NOT FOR CONSTRUCTION.

THERE MAY BE EXISTING UTILITIES OR OTHER FEATURES WHICH ARE EITHER NOT SHOWN OR SHOWN INCORRECTLY ON THIS PLAN. IT IS THE RESPONSIBILITY OF THE DEVELOPER TO LOCATE AND IDENTIFY ALL UTILITIES AND TOPOGRAPHY WHICH MAY AFFECT THE CONSTRUCTION OF THESE IMPROVEMENTS.

ALL PERMANENT SIGNING AND POSTING WILL BE DETERMINED AND PROVIDED BY THE TRAFFIC ENGINEERING DIVISION, FOLLOWING CONSTRUCTION OF THESE IMPROVEMENTS.

THE DEVELOPER SHALL PROVIDE, INSTALL AND MAINTAIN ALL STREET END BARRICADES, SIGNING AND TRAFFIC CONTROL, AS REQUIRED BY THE CITY TRAFFIC ENGINEER.

PAVEMENT SAWCUTS SHALL BE AS DIRECTED BY THE CITY CONSTRUCTION ENGINEER. SAWCUTS SHOWN ON THE PLAN ARE APPROXIMATE.

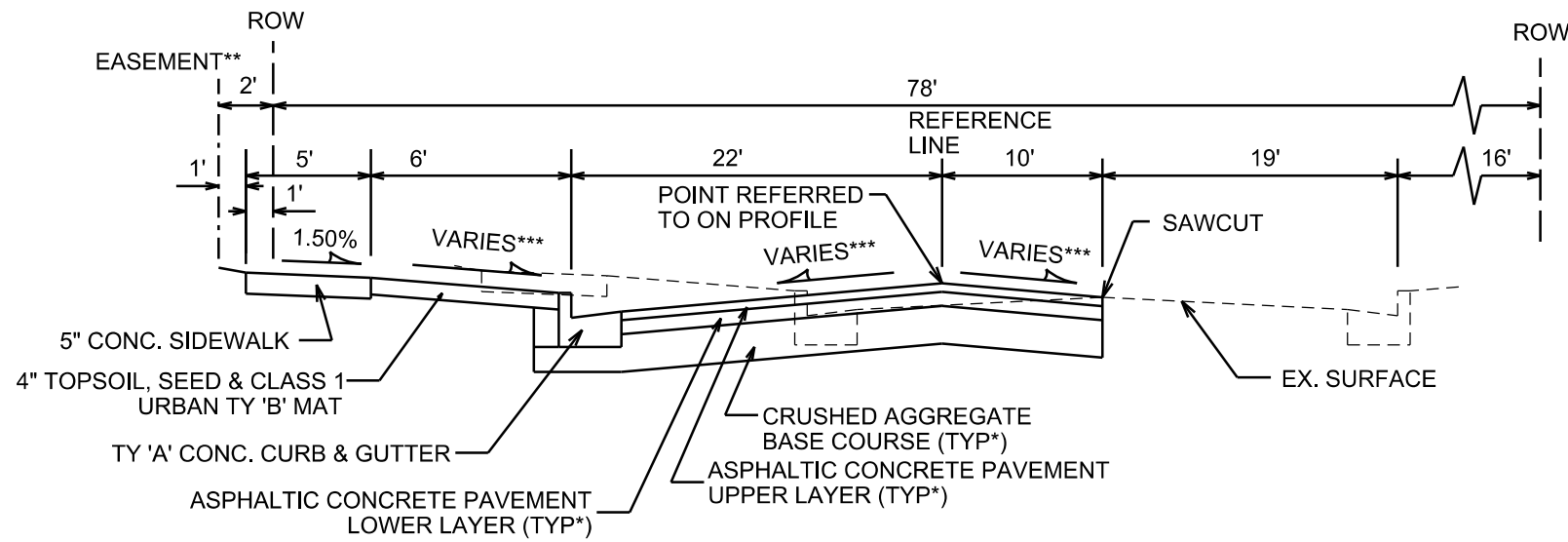
DAMAGE TO ANY EXISTING CURB, PAVEMENT, SIDEWALK, ETC. THAT IS TO REMAIN SHALL BE REPAIRED BY THE DEVELOPER/CONTRACTOR AS DIRECTED BY THE ENGINEER.

PLOT SCALE: _____

PLOT NAME: _____

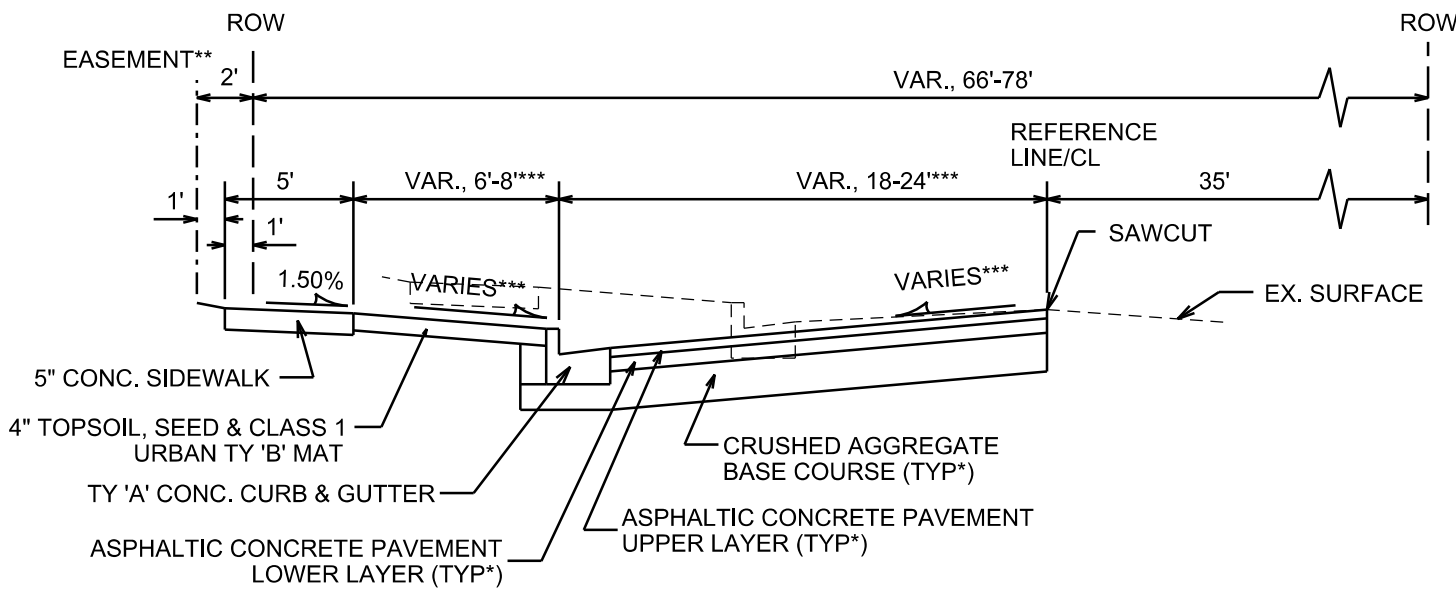
REV. DATE: _____

ORIGINATOR: CITY OF MADISON, STREETS DIVISION



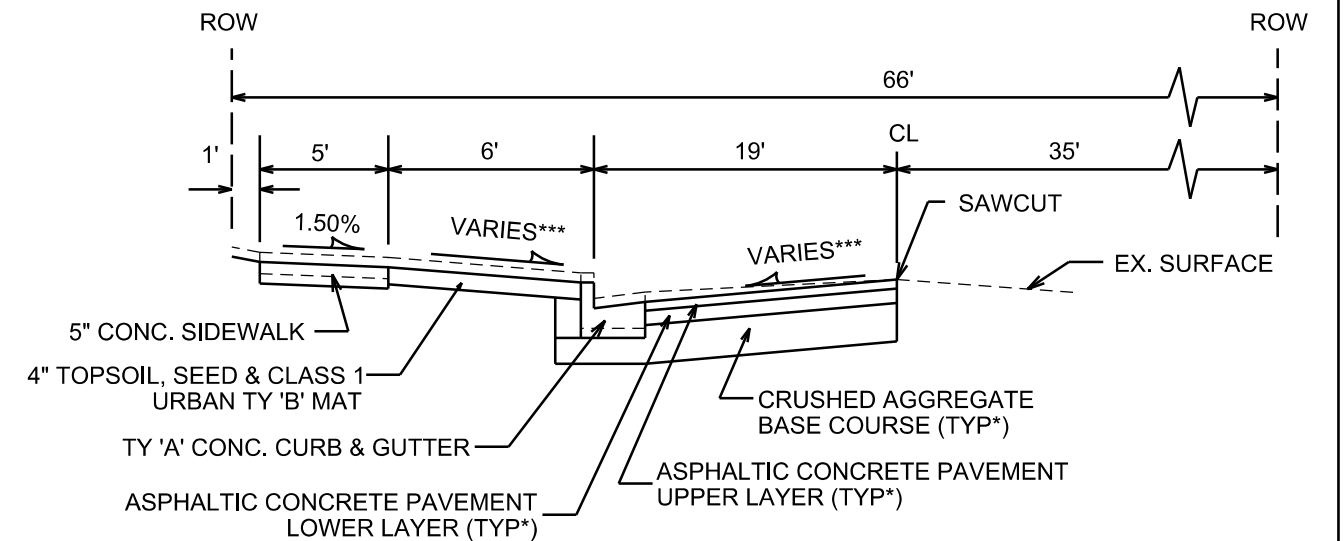
TYPICAL SECTION

NORTH PATERSON STREET
STA 20+60 TO STA 21+69
NOT TO SCALE



TYPICAL SECTION

NORTH PATERSON STREET
STA 21+69 TO STA 22+58
NOT TO SCALE



TYPICAL SECTION

NORTH PATERSON STREET
STA 22+58 TO STA 3+86
NOT TO SCALE

CITY OF MADISON MINIMUM PAVEMENT DESIGN

TYPE	CRUSHED AGG. BASE COURSE		ASPHALTIC CONCRETE PAVEMENT			
	LOWER LAYER GRADATION 1	UPPER LAYER GRADATION 2	LOWER LAYER TYPE THICKNESS	UPPER LAYER TYPE THICKNESS	LOWER LAYER TYPE THICKNESS	UPPER LAYER TYPE THICKNESS
A	6"	4"	E-0.3	1.75"	E-0.3	1.75"
B	6"	4"	E-1	2.25"	E-1	2.00"
C	6"	4"	E-3	3.25"	E-3	2.00"

NOTES:

- * A PAVEMENT DESIGN IN ACCORDANCE WITH STANDARD DETAIL DRAWING 4.06 IS REQUIRED ON ALL PROJECTS. TYPE 'B' PAVEMENT SHALL BE USED ON N. PATERSON ST. FROM STA 20+60 TO STA 24+00. 10" DOWELED CONCRETE PAVEMENT SHALL BE USED ON N. PATERSON ST FROM STA 20+27 TO STA 20+60

** PUBLIC ACCESS SIDEWALK EASEMENT. SEE RECORD DOC. NO. 5062146.

*** SEE CROSS SECTIONS FOR SLOPES, OFFSETS AND ELEVATIONS

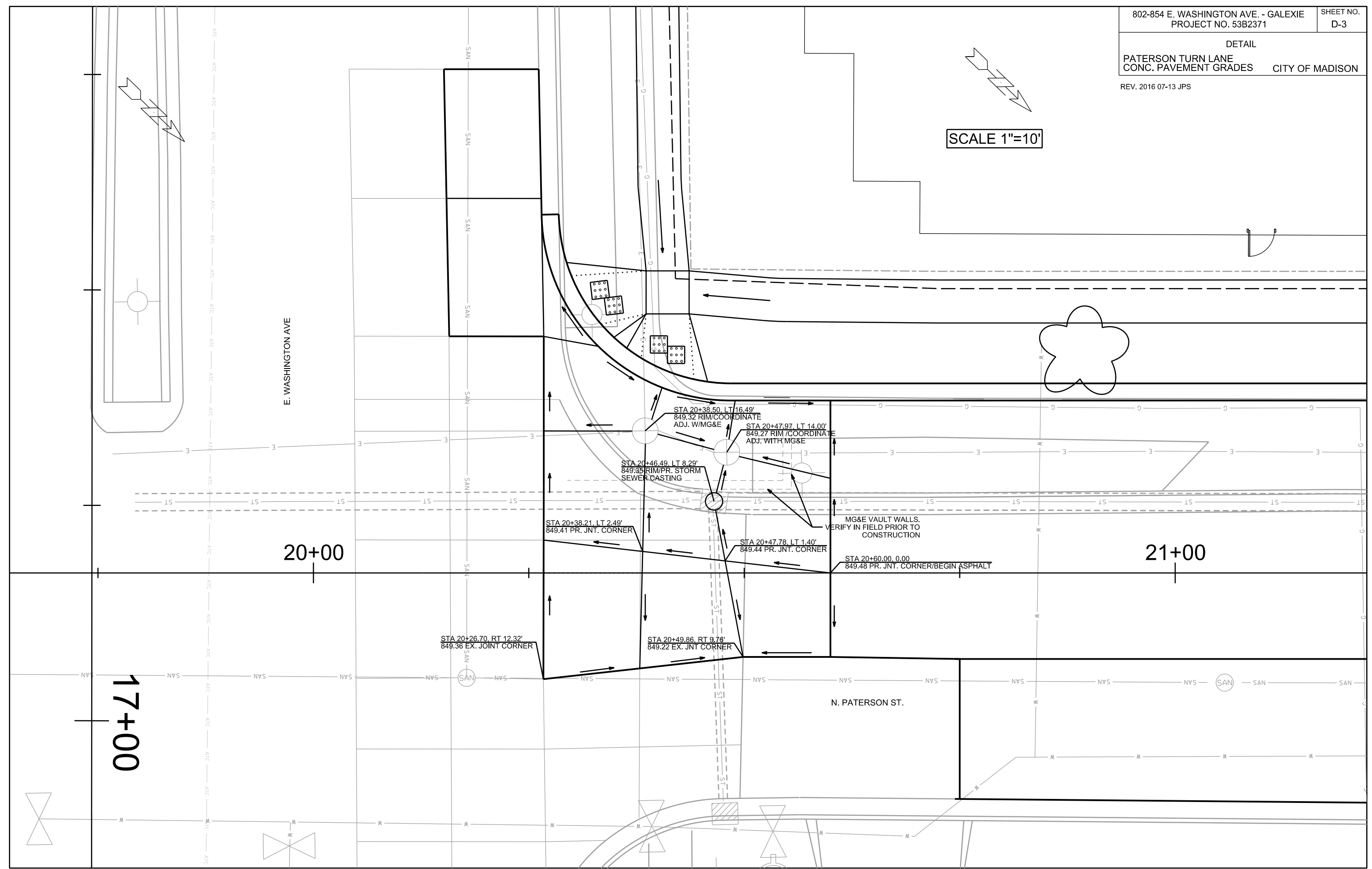
PLOT SCALE: _____

PLOT NAME: _____

REV. DATE: _____

ORIGINATOR: CITY OF MADISON, STREETS DIVISION

SCALE 1"=10'

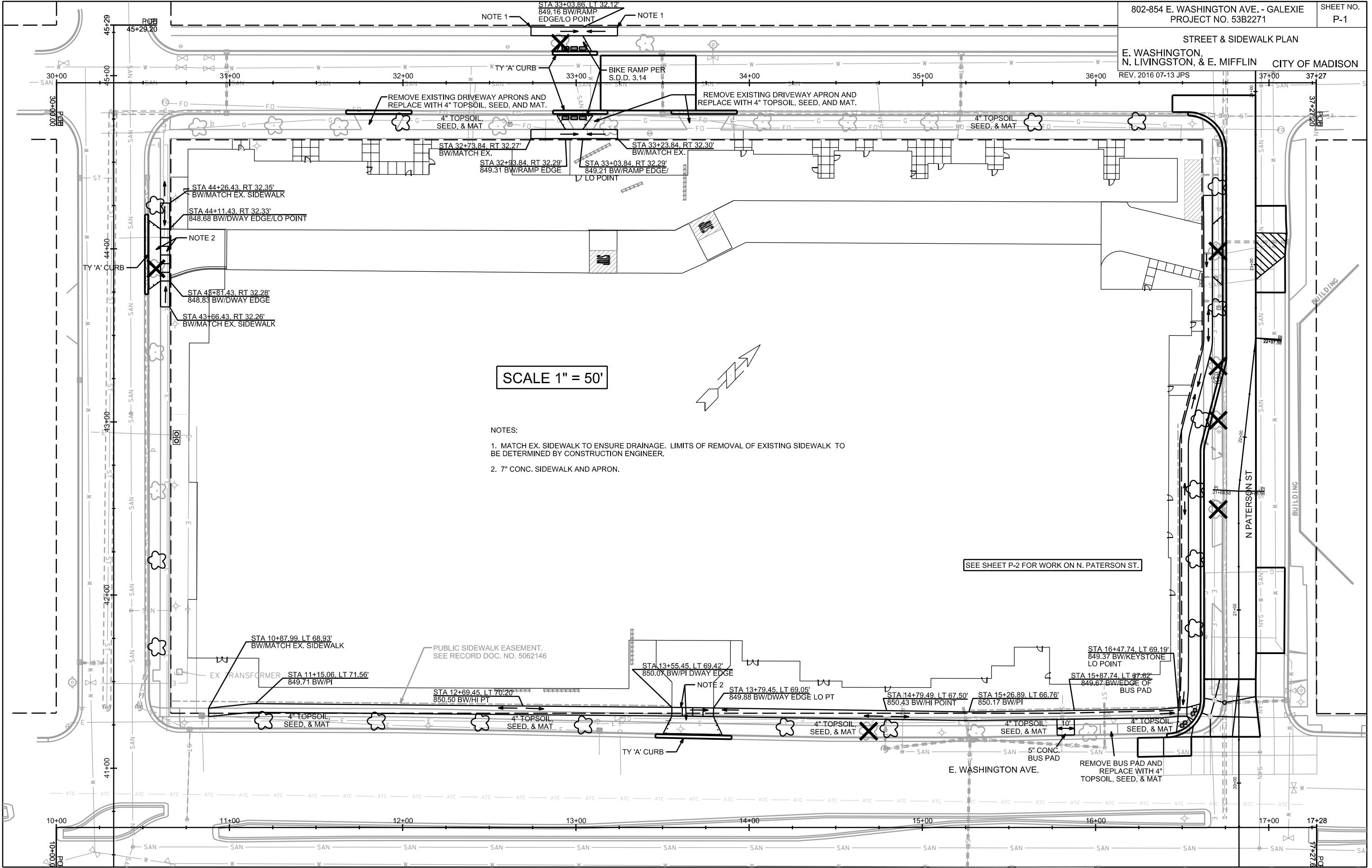


PLOT SCALE: _____

PLOT NAME: _____

REV. DATE: _____

ORIGINATOR: CITY OF MADISON, STREETS DIVISION



SCALE 1" = 50'

- NOTES:
1. MATCH EX. SIDEWALK TO ENSURE DRAINAGE. LIMITS OF REMOVAL OF EXISTING SIDEWALK TO BE DETERMINED BY CONSTRUCTION ENGINEER.
 2. 7" CONC. SIDEWALK AND APRON.

SEE SHEET P-2 FOR WORK ON N. PATERSON ST.

PLOT SCALE: _____

PLOT NAME: _____

REV. DATE: _____

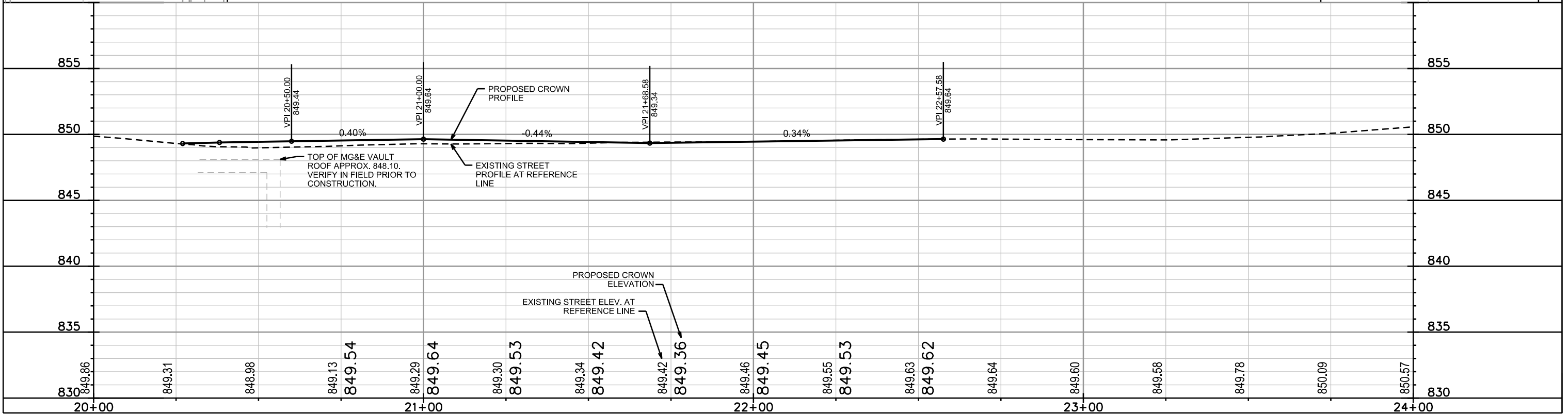
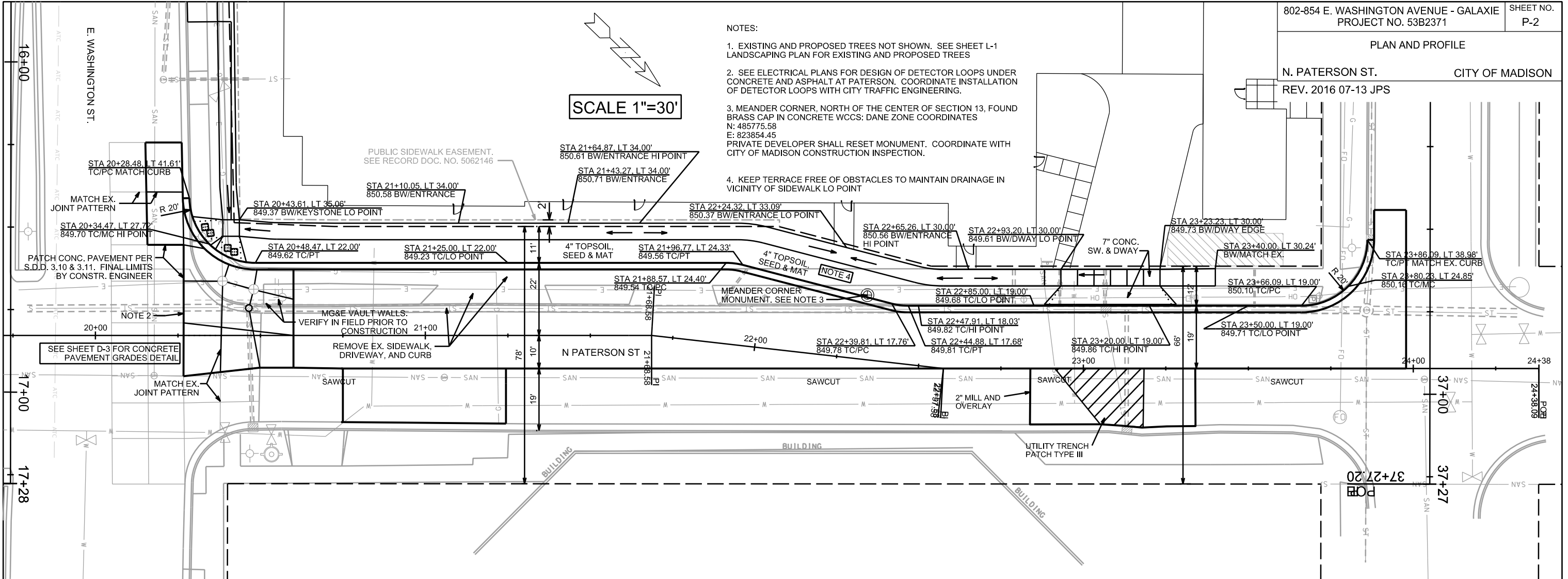
ORIGINATOR: CITY OF MADISON, STREETS DIVISION

PLAN AND PROFILE

N. PATERSON ST. CITY OF MADISON
REV. 2016 07-13 JPS

- NOTES:
- EXISTING AND PROPOSED TREES NOT SHOWN. SEE SHEET L-1 LANDSCAPING PLAN FOR EXISTING AND PROPOSED TREES
 - SEE ELECTRICAL PLANS FOR DESIGN OF DETECTOR LOOPS UNDER CONCRETE AND ASPHALT AT PATERSON. COORDINATE INSTALLATION OF DETECTOR LOOPS WITH CITY TRAFFIC ENGINEERING.
 - MEANDER CORNER, NORTH OF THE CENTER OF SECTION 13, FOUND BRASS CAP IN CONCRETE WCCS: DANE ZONE COORDINATES N: 485775.58 E: 823854.45 PRIVATE DEVELOPER SHALL RESET MONUMENT. COORDINATE WITH CITY OF MADISON CONSTRUCTION INSPECTION.
 - KEEP TERRACE FREE OF OBSTACLES TO MAINTAIN DRAINAGE IN VICINITY OF SIDEWALK LO POINT

SCALE 1"=30'



PLOT SCALE:

PLOT NAME:

REV. DATE:

ORIGINATOR: CITY OF MADISON, STREETS DIVISION

CROSS SECTIONS

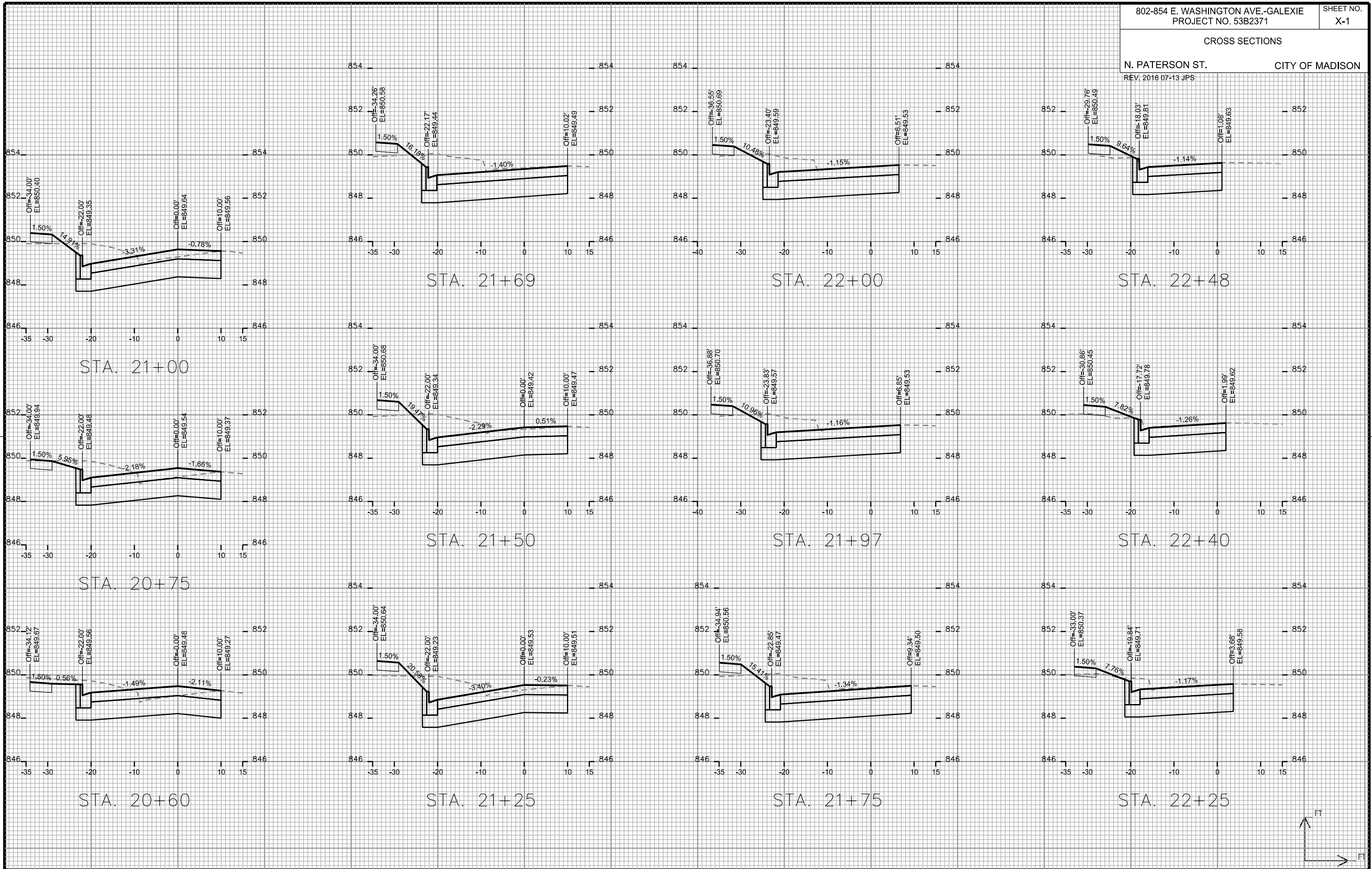
N. PATERSON ST. CITY OF MADISON
REV. 2016 07-13 JPS

PLOT SCALE: _____

PLOT NAME: _____

REV. DATE: _____

ORIGINATOR: CITY OF MADISON - STREETS DIVISION



CROSS SECTIONS

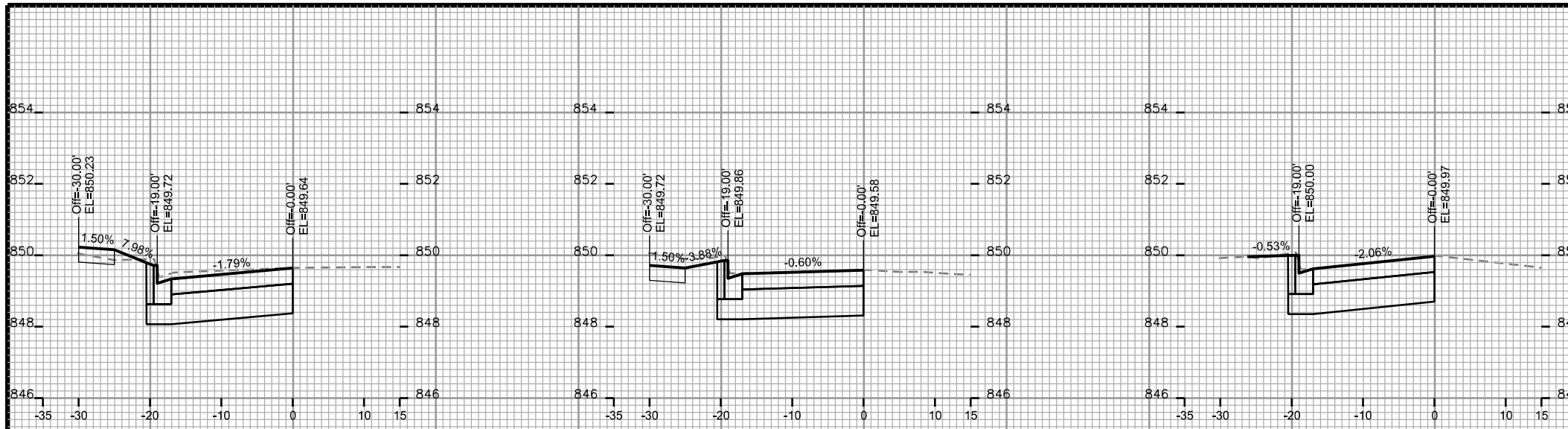
N. PATERSON ST. CITY OF MADISON
REV. 2016 07-13 JPS

PLOT SCALE: _____

PLOT NAME: _____

REV. DATE: _____

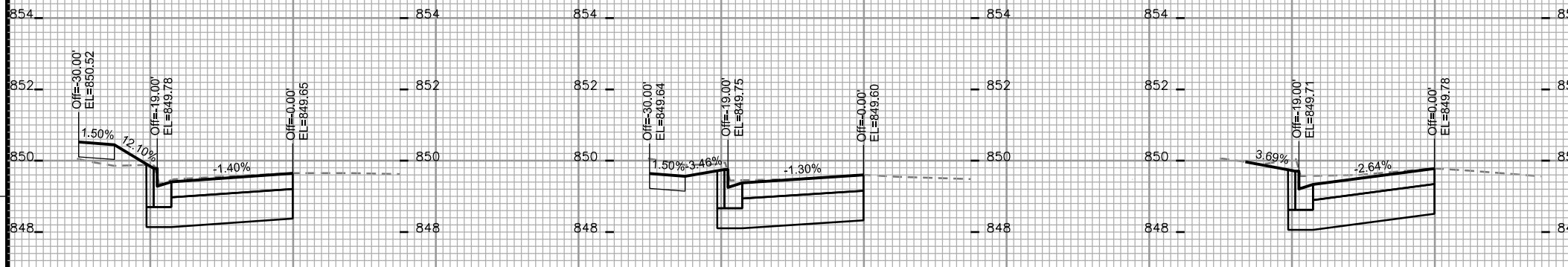
ORIGINATOR: CITY OF MADISON, STREETS DIVISION



STA. 22+75

STA. 23+20

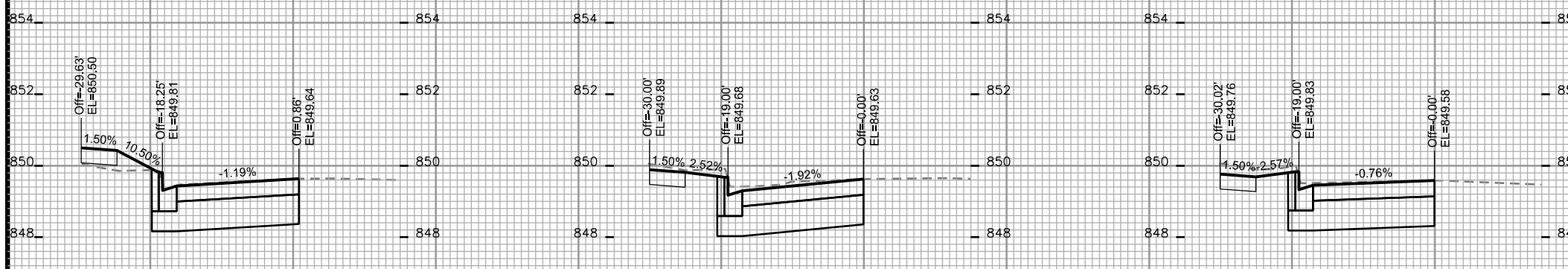
STA. 23+66



STA. 22+58

STA. 23+00

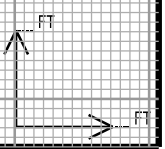
STA. 23+50

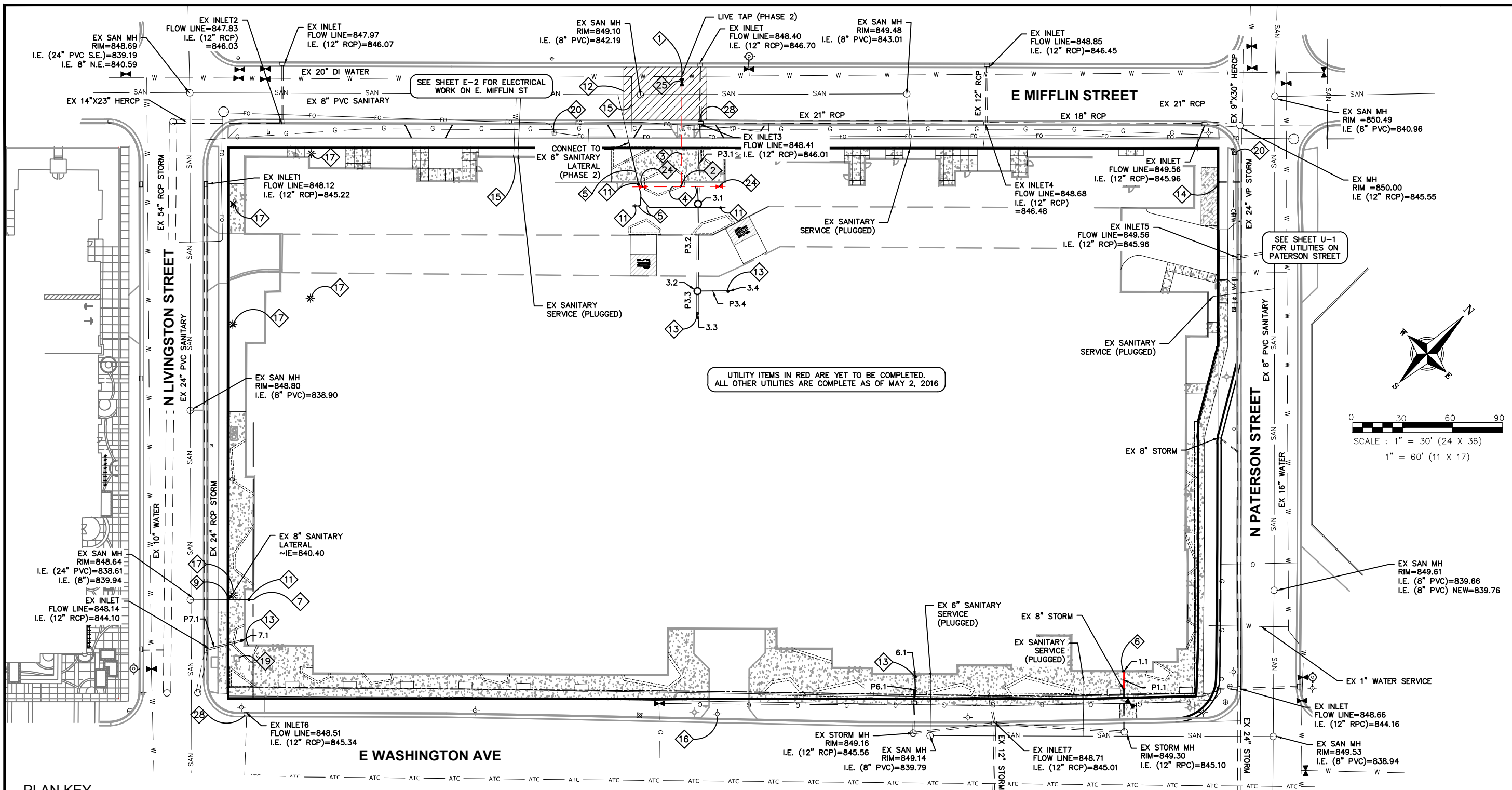


STA. 22+50

STA. 22+85

STA. 23+25





PLAN KEY

- | | | |
|---|--|--|
| ① CONNECT TO EXISTING WATER MAIN. COORDINATE INSTALLATION WITH MADISON WATER UTILITY | ⑪ SEE PLUMBING PLANS FOR CLEAN OUT LOCATION | ⑳ ADJUST STORM SEWER STRUCTURE AND REPLACE CASTING, SEE CITY PLANS |
| ② 6"x6"x8" TEE (PHASE 2) | ⑫ UTILITY PATCH PER CITY REQUIREMENTS | ㉑ NEW STORM SEWER INLET, SEE CITY PLANS |
| ③ 8" WATER SERVICE | ⑬ CONNECT TO ROOF DRAIN. COORDINATE WORK WITH PLUMBING CONTRACTOR. | ㉒ REPLACE STORM SEWER CASTING WITH NEENAH MODEL R-3290A |
| ④ 6" WATER SERVICE (PHASE 2) | ⑭ PLUG EXISTING STORM SEWER | ㉓ 6" VALVE (PHASE 2) |
| ⑤ 6" SANITARY LATERAL @ 1% MIN. SLOPE (PHASE 2) | ⑮ EXISTING WATER SERVICE TO BE ABANDONED | ㉔ 8" VALVE |
| ⑥ CAPPED CONNECTION FOR FUTURE PHASE | ⑯ EXISTING LIGHT POLE TO BE RELOCATED | ㉕ 16" VALVE |
| ⑦ 8" SANITARY INV=840.60. EXTEND 5 FEET INTO BUILDING | ⑰ EXISTING LIGHT POLE TO BE REMOVED | ㉖ CONNECT TO EXISTING STORM SEWER |
| ⑧ 8" SANITARY INV=840.05. EXTEND 5 FEET INTO BUILDING | ⑱ ADJUST MG&E MANHOLE RIM ELEVATION, SEE CITY PLANS | ㉗ CONNECT TO EXISTING STORM SEWER INLET PER CITY STANDARDS |
| ⑨ CONNECT TO EXISTING 8" SANITARY SEWER | ⑲ EXISTING TRANSFORMER | |
| ⑩ FIELD CORE CONNECTION TO EXISTING MANHOLE & USE CORE-N-SEAL BOOT PER CITY STANDARDS | ⑳ EXISTING UTILITY PEDESTAL | |

UTILITY NOTES

- ALL WORK IN THE RIGHT OF WAY SHALL BE CONSTRUCTED IN ACCORDANCE WITH THE CITY ISSUED PLANS, CITY PROJECT NUMBER 53B2371.
- CONTRACTOR SHALL CALL DIGGERS HOTLINE PRIOR TO ANY CONSTRUCTION. ALL EXISTING UTILITIES SHOWN ON THE PLAN ARE APPROXIMATE AND WERE FIELD LOCATED FROM GROUND MARKING OR BASED OFF OF CITY UTILITY RECORDS. THE LOCATIONS ARE SHOWN FOR INFORMATIONAL PURPOSES ONLY AND SHOULD BE FIELD VERIFIED PRIOR TO CONSTRUCTION.
- ALL SITE UTILITY WORK SHALL BE DONE IN ACCORDANCE WITH THE CITY STANDARD SPECIFICATIONS FOR PUBLIC WORKS CONSTRUCTION, LATEST ADDITION.
- CONTRACTOR SHALL OBTAIN ALL NECESSARY PLUGGING/CONNECTION PERMITS FROM THE CITY PRIOR TO ANY UTILITY WORK. CONTRACTOR TO NOTIFY THE PUBLIC WORKS DEPARTMENT A MINIMUM OF 48 HOURS BEFORE CONNECTING TO PUBLIC UTILITIES.
- PRIOR TO CONSTRUCTION, CONTRACTOR SHALL OBTAIN A STREET OPENING PERMIT FOR ANY WORK TO BE DONE WITHIN THE RIGHT-OF-WAY.
- RESTORATION OF PAVEMENT, CURB & GUTTER, AND SIDEWALK WITHIN THE STREET RIGHT OF WAY IS CONSIDERED INCIDENTAL AND SHALL BE INCLUDED IN THE COST OF THE UNDERGROUND IMPROVEMENTS.
- ALL STORM SEWER PIPE TO BE ADS N-12 PIPE OR RCP CLASS III REINFORCED CONCRETE WITH RUBBER GASKETS AS NOTED.
- CONTRACTOR SHALL CONFIRM CONNECTION ELEVATION GRADES OF ALL PIPES PRIOR TO BEGINNING CONSTRUCTION.
- WATER MAIN SHALL BE DUCTILE IRON, CLASS 52.
- SANITARY SEWER SERVICES SHALL BE SDR-35 PVC.
- ANY PERSON WHO INSTALLS A NONCONDUCTIVE WATER OR SEWER LATERAL MUST ALSO INSTALL A LOCATION WIRE OR OTHER EQUALLY EFFECTIVE MEANS FOR MARKING THE LOCATION OF THE LATERAL. METHOD SHALL BE APPROVED BY THE CITY.
- CONTRACTOR TO COORDINATE NEW, RELOCATED AND/OR ABANDONED GAS, ELECTRIC, TELEPHONE, AND CABLE WITH APPROPRIATE UTILITY COMPANIES.
- UTILITIES SERVING PROPOSED BUILDINGS SHALL BE STUBBED INTO THE PROPOSED BUILDING(S) A MIN. OF 5' AND STAKED.
- ALL WATER MAIN PIPE AND FITTINGS SHALL BE INSTALLED TO A MIN. DEPTH OF COVER OF 6.5'. AFTER REGRADING, EXISTING WATER MAIN PIPE WHICH DOES NOT MEET THIS REQUIREMENT SHALL BE INSULATED.
- STORM SEWERS WHICH CROSS AN ACTIVE SEWER OR WATER MAIN OR LATERAL SHALL HAVE A MINIMUM CLEAR VERTICAL CLEARANCE OF THREE (3) FEET. CROSSINGS WITH LESSER VERTICAL CLEARANCE SHALL BE PROTECTED FROM FROST DAMAGE BY PLACEMENT OF 2-INCH THICK POLYSTYRENE BOARD INSULATION.
- BUILDING PLUMBER SHALL VERIFY SIZE, SLOPE, AND EXACT LOCATION OF PROPOSED SANITARY LATERALS AND WATER SERVICES PRIOR TO INSTALLATION.

ISSUANCE/REVISION	DATE
CITY APPROVAL SET	05-03-16

818 N Meadowbrook Ln
Waukegan, WI 53597
phone (608) 849-9378
fax (608) 237-2129

PROFESSIONAL ENGINEERING LLC

THE GALAXIE
UTILITY PLAN
810 E WASHINGTON AVE
MADISON, WISCONSIN

C300

STRUCTURE TABLE					
STRUCTURE NAME	SIZE	TOP OF CASTING	PIPES IN	PIPES OUT	CASTING
1.1	CAPPED CONNECTION FOR FUTURE PHASE	850.75		P1.1, 8" INV OUT =845.75	-
3.1	3' DIA. CB	850.75	P3.2, 12" INV IN =846.67	P3.1, 12" INV OUT =846.59	NEENAH R-1550
3.2	3' DIA. CB	850.75	P3.3, 12" INV IN =847.67 P3.4, 12" INV IN =847.67	P3.2, 12" INV OUT =847.67	NEENAH R-1550
3.3	CONNECT TO ROOF DRAIN	850.75		P3.3, 12" INV OUT =847.75	-
3.4	CONNECT TO ROOF DRAIN	850.75		P3.4, 12" INV OUT =847.78	-
6.1	CAPPED CONNECTION FOR FUTURE PHASE	850.72		P6.1, 10" INV OUT =845.86	-
7.1	CONNECT TO ROOF DRAIN	850.05		P7.1, 12" INV OUT =845.76	-
EX INLET3	EXISTING INLET	848.91	P3.1, 12" INV IN =846.10		-
EX INLET7	EXISTING PIPE	849.21	P6.1, 10" INV IN =845.70		-
EX PIPE	EXISTING INLET	849.90	P1.1, 8" INV IN =845.60		-

PIPE TABLE						
NAME	SIZE	LENGTH	SLOPE	MATERIAL	START INVERT ELEVATION	END INVERT ELEVATION
P1.1	8"	11'	1.43%	ADS N-12	845.75'	845.60'
P3.1	12"	49'	1.00%	ADS N-12	846.59'	846.10'
P3.2	12"	53'	1.90%	ADS N-12	847.67'	846.67'
P3.3	12"	14'	0.60%	ADS N-12	847.75'	847.67'
P3.4	12"	19'	0.60%	ADS N-12	847.78'	847.67'
P6.1	10"	16'	1.00%	ADS N-12	845.86'	845.70'
P7.1	12"	23'	1.90%	ADS N-12	845.76'	845.34'

ISSUANCE/REVISION	DATE
CITY APPROVAL SET	05-03-16

818 N Meadowbrook Ln
Waukegan, WI 53597
phone (608) 849-9378
fax (608) 237-2129



PROFESSIONAL ENGINEERING LLC

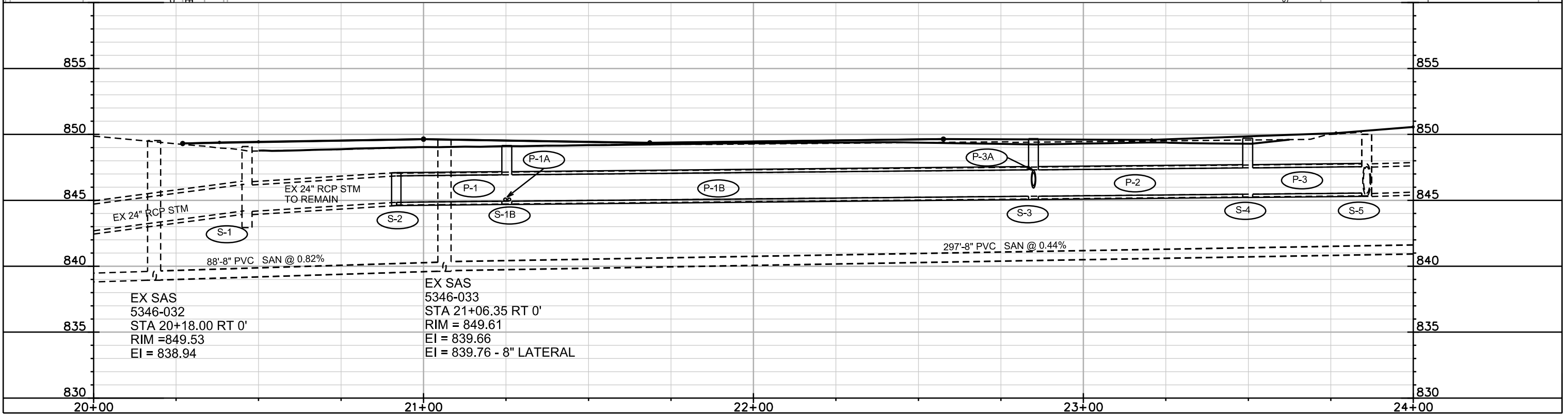
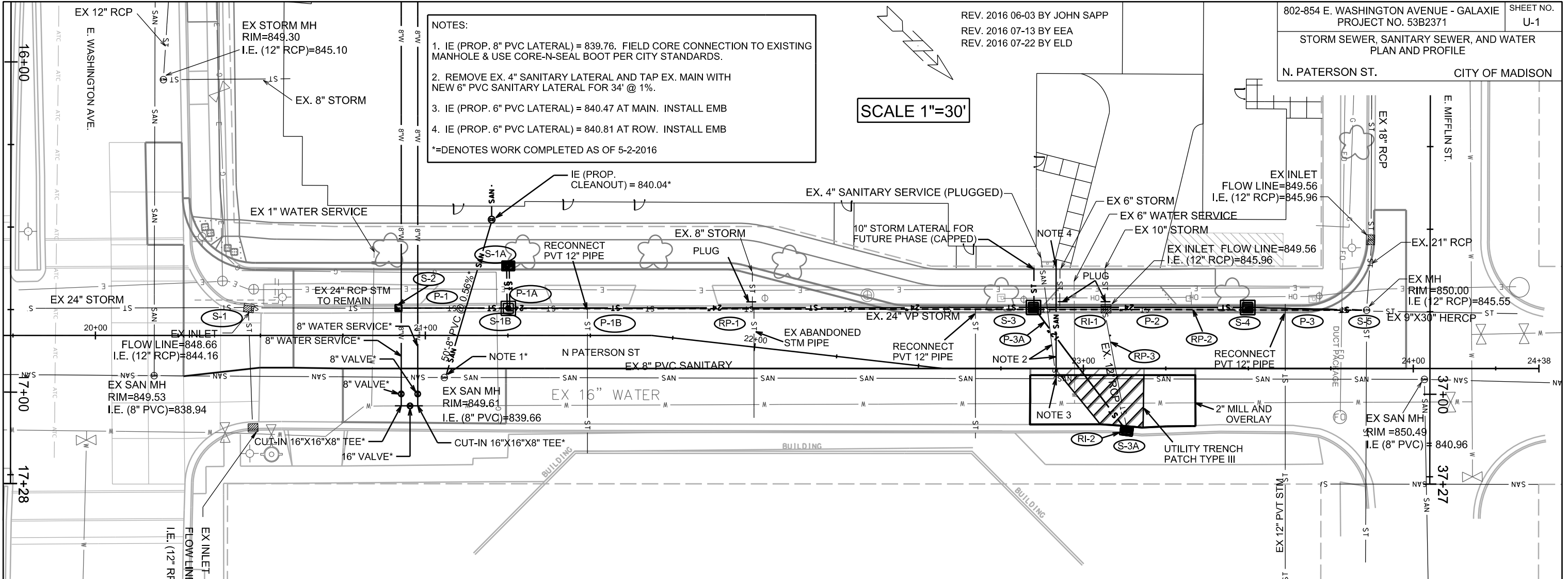
**THE GALAXIE
STORM SEWER SCHEDULE**
810 E WASHINGTON AVE
MADISON, WISCONSIN

C301

REV. 2016 06-03 BY JOHN SAPP
 REV. 2016 07-13 BY EEA
 REV. 2016 07-22 BY ELD

- NOTES:
1. IE (PROP. 8" PVC LATERAL) = 839.76. FIELD CORE CONNECTION TO EXISTING MANHOLE & USE CORE-N-SEAL BOOT PER CITY STANDARDS.
 2. REMOVE EX. 4" SANITARY LATERAL AND TAP EX. MAIN WITH NEW 6" PVC SANITARY LATERAL FOR 34' @ 1%.
 3. IE (PROP. 6" PVC LATERAL) = 840.47 AT MAIN. INSTALL EMB
 4. IE (PROP. 6" PVC LATERAL) = 840.81 AT ROW. INSTALL EMB
- *=DENOTES WORK COMPLETED AS OF 5-2-2016

SCALE 1"=30'



PLOT SCALE: _____
 PLOT NAME: _____
 REV. DATE: _____

ORIGINATOR: CITY OF MADISON, STREETS DIVISION

STORM SEWER SCHEDULE

* REVISED 7/13/16 EEA
+ REVISED 7/22/16 ELD

802-845 E. WASHINGTON AVENUE-GALAXIE PROJECT NO. 53B2371	SHEET NO. U-2
STORM SEWER SCHEDULE CITY OF MADISON	

STRUCTURES

STRUC. NO.	STATION	LOCATION (OFFSET)	TYPE	TOP OF CASTING	E.I.	DEPTH	NOTES
* S-1	20+46.49	LT-8.29	RECONSTRUCT ROOF	849.35	845.18	-	NOTE (1)
* S-1A	21+25.00	LT-21.50	H INLET	849.23	844.93	4.30	LP; W/ R-3067-7004-VB
* + S-1B	21+25.00	LT-8.29	3X3 SAS	849.25	844.93	4.32	FP; W/ R-1550
* S-2	20+92.43	LT-8.29	CONCRETE COLLAR	-	844.85	-	NOTE (2)
* S-3	22+85.00	LT-18.50	3X3 SAS	849.68	845.31	4.37	LP; FP; W/ R-3067-7004-VB
* S-3A	23+13.08	RT-18.88	H INLET	FIELD SET	846.34	FIELD	FP; W/ R-3067-7004-V; (5)
* S-4	23+50.00	LT-18.50	3X3 SAS	849.71	845.46	4.25	LP; FP; W/ R-3067-7004-VB
S-5	23+84.84	LT-19.64	TAP	-	845.55	-	TAP EX AS 5246-090

PIPES

PIPE NO.	FROM (DNSTM)	TO (UPSTM)	PLAN LGTH (FT)	PIPE LGTH (FT)	DISCH. E.I.	INLET E.I.	SLOPE (%)	PIPE SIZE	TYPE	NOTES
*+ P-1	S-2	S-1B	33	32	844.85	844.93	0.25%	24"	RCP	(3)
*+ P-1A	S-1B	S-1A	13	12	844.93	844.93	0.00%	6"	D.I.	(6)
+ P-1B	S-1B	S-3	159	156	844.93	845.31	0.24%	24"	RCP	(3)
* P-2	S-3	S-4	65	62	845.31	845.46	0.24%	24"	RCP	-
* P-3	S-4	S-5	36	33	845.46	845.55	0.27%	24"	RCP	-
* P-3A	S-3	S-3A	47	44	846.10	846.34	0.55%	12"	RCP	NCM

STORM STRUCTURE REMOVALS

STRUC. NO.	ID NO.	STATION	LOCATION (OFFSET)	TYPE	NOTES
RI-1	IN 5246-101	23+08.16	LT-20.50	H INLET	-
RI-2	IN 5246-100	23+13.08	RT-16.88	TUB INLET	-

STORM PIPE REMOVALS

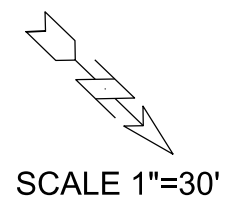
PIPE REMOVAL NO.	REMOVE FROM	REMOVE TO	LENGTH (FT)	SIZE	TYPE	NOTES
RP-1	S-2	RI-1	209	24"	VP	-
RP-2	RI-1	S-5	79	24"	VP	-
RP-3	RI-1	S-3A	36	12"	VP	-

SPECIFIC NOTES

- RECONSTRUCT STRUCTURE ROOF AND REPLACE CASTING W/ R-1550
- FIELD VERIFY EI
- RECONNECT EX PVT STM PIPES
- ~~INSTALL MARKERBALL~~
- NO SURVEY PROVIDED AT LOCATION
- 2 (TWO) - 6" D.I. PIPES

STANDARD NOTES:

- ABBREVIATIONS: AE = APRON ENDWALL; RCP = REINFORCED CONCRETE PIPE; HERCP = HORIZONTAL ELLIPTICAL REINFORCED CONCRETE PIPE; DNA = DOES NOT APPLY; SAS = SEWER ACCESS STRUCTURE; LP = LOW POINT INLET STRUCTURE; FP = FIELD POURED STRUCTURE; TR = TOP OF CONCRETE ROOF; NCM = NO CROWN MATCH FOR PIPES
- APPROXIMATE DISCHARGE E.I. GIVEN, ADJUST E.I. AND PIPE SLOPE IN THE FIELD.
- TOP OF CASTING GRADE GIVEN IS THE TOP OF CURB FOR INLET STRUCTURES AND THE FLOWLINE OF THE CLOSED CASTING FOR SAS'S.
- TOP OF CONCRETE ROOF (TR) IS 1.25' BELOW TOP OF CASTING UNLESS OTHERWISE NOTED.
- ALL REINFORCED CONCRETE PIPES TO BE CLASS III UNLESS OTHERWISE NOTED.
- SURVEYOR TO CONFIRM THAT ALL INLET STATION / OFFSETS LINE UP WITH PROPOSED CURB AND GUTTER.
- ALL STRUCTURES CALLED OUT AS FIELD POURED SHALL BE FIELD POURED. ALL OTHER STRUCTURES (NOT INDICATED AS FIELD POURED) SHALL BE SUBMITTED TO CITY ENGINEERING FOR APPROVAL IF PRECAST STRUCTURES ARE PREFERRED. CONTACT ELIA E. ACOSTA OF CITY ENGINEERING AT (608) 266-4096 FOR PRECAST APPROVALS, OR FAX SHOP DRAWINGS TO (608)264-9275.

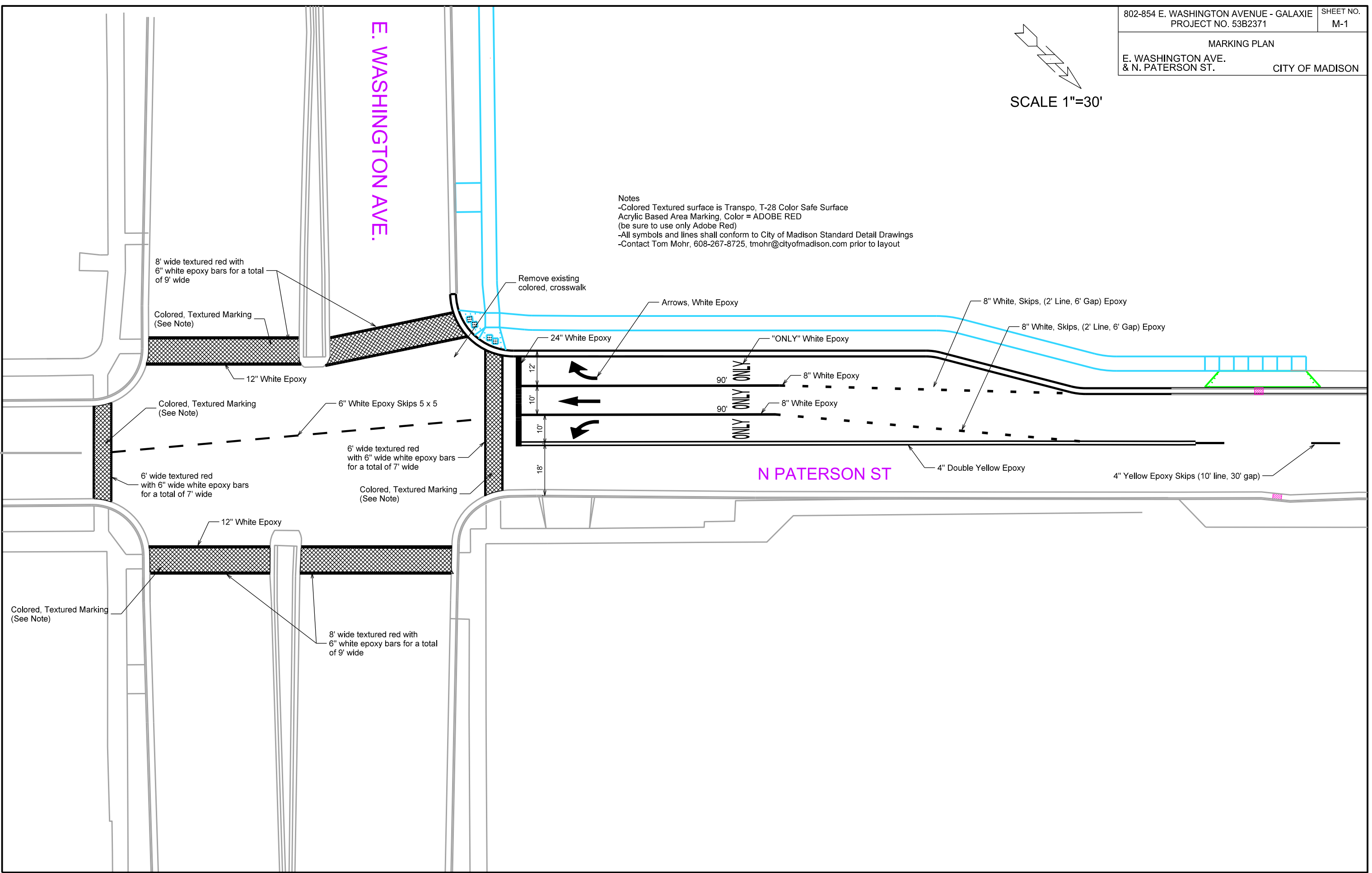


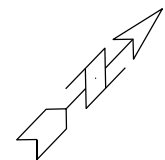
E. WASHINGTON AVE.

N PATERSON ST

Notes
 -Colored Textured surface is Transpo, T-28 Color Safe Surface
 Acrylic Based Area Marking, Color = ADOBE RED
 (be sure to use only Adobe Red)
 -All symbols and lines shall conform to City of Madison Standard Detail Drawings
 -Contact Tom Mohr, 608-267-8725, tmohr@cityofmadison.com prior to layout

PLOT SCALE: _____
 PLOT NAME: _____
 REV. DATE: _____
 ORIGINATOR: CITY OF MADISON, STREETS DIVISION



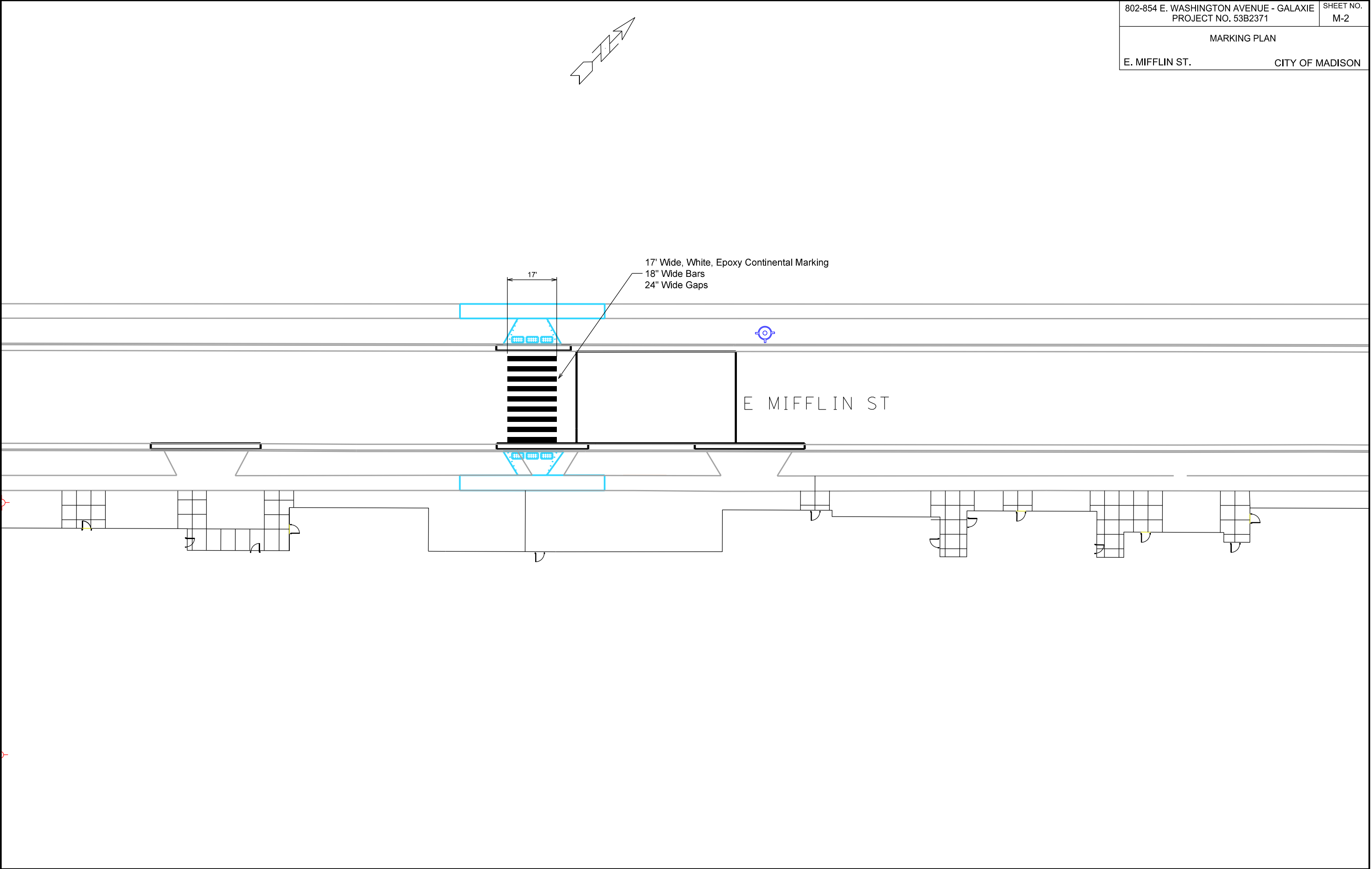


PLOT SCALE:

PLOT NAME:

REV. DATE:

ORIGINATOR: CITY OF MADISON, STREETS DIVISION



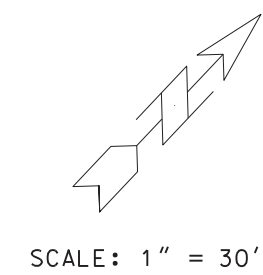
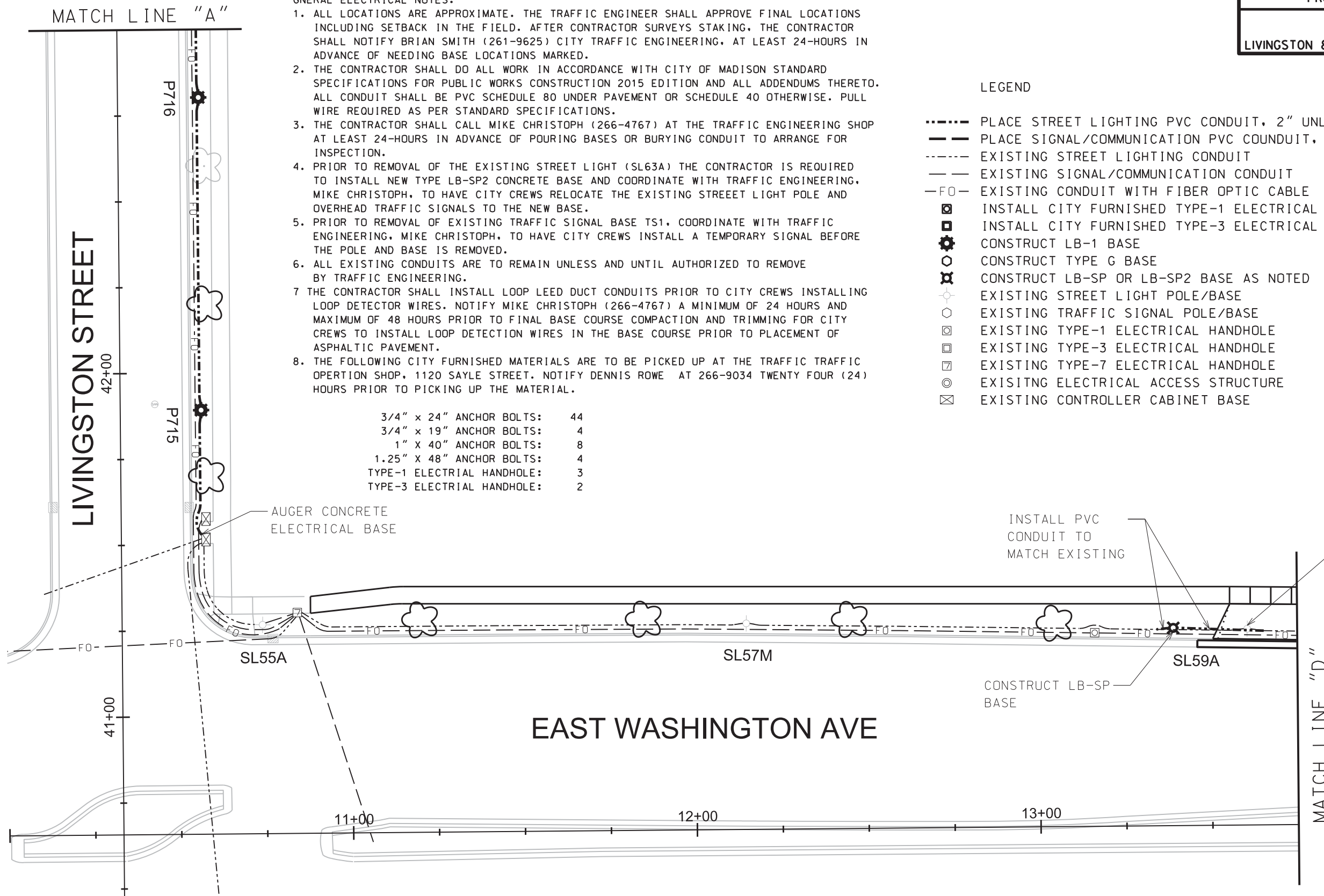
GENERAL ELECTRICAL NOTES:

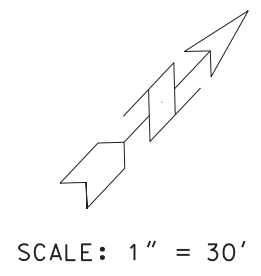
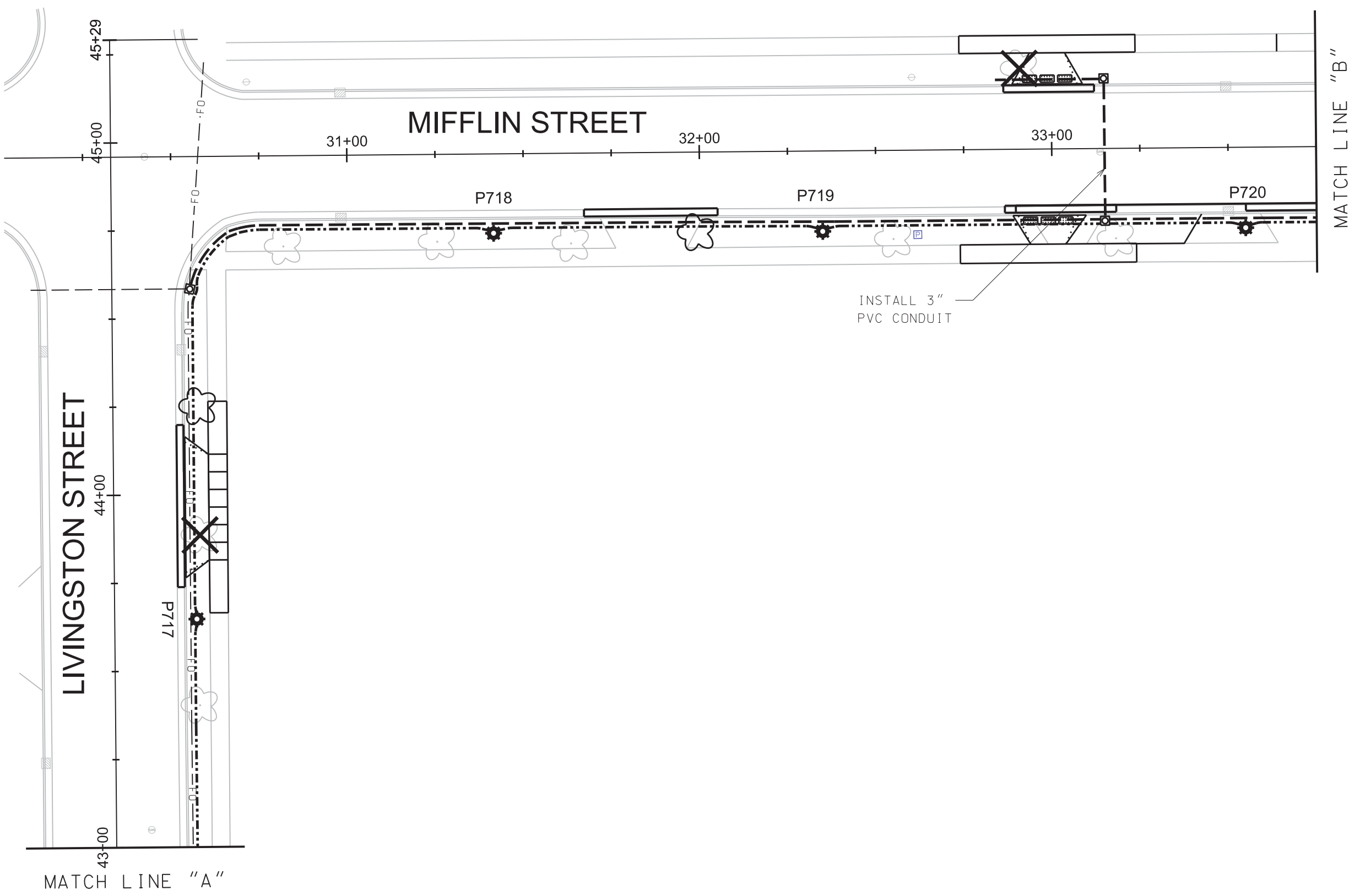
1. ALL LOCATIONS ARE APPROXIMATE. THE TRAFFIC ENGINEER SHALL APPROVE FINAL LOCATIONS INCLUDING SETBACK IN THE FIELD. AFTER CONTRACTOR SURVEYS STAKING, THE CONTRACTOR SHALL NOTIFY BRIAN SMITH (261-9625) CITY TRAFFIC ENGINEERING, AT LEAST 24-HOURS IN ADVANCE OF NEEDING BASE LOCATIONS MARKED.
2. THE CONTRACTOR SHALL DO ALL WORK IN ACCORDANCE WITH CITY OF MADISON STANDARD SPECIFICATIONS FOR PUBLIC WORKS CONSTRUCTION 2015 EDITION AND ALL ADDENDUMS THERETO. ALL CONDUIT SHALL BE PVC SCHEDULE 80 UNDER PAVEMENT OR SCHEDULE 40 OTHERWISE. PULL WIRE REQUIRED AS PER STANDARD SPECIFICATIONS.
3. THE CONTRACTOR SHALL CALL MIKE CHRISTOPH (266-4767) AT THE TRAFFIC ENGINEERING SHOP AT LEAST 24-HOURS IN ADVANCE OF POURING BASES OR BURYING CONDUIT TO ARRANGE FOR INSPECTION.
4. PRIOR TO REMOVAL OF THE EXISTING STREET LIGHT (SL63A) THE CONTRACTOR IS REQUIRED TO INSTALL NEW TYPE LB-SP2 CONCRETE BASE AND COORDINATE WITH TRAFFIC ENGINEERING, MIKE CHRISTOPH, TO HAVE CITY CREWS RELOCATE THE EXISTING STREET LIGHT POLE AND OVERHEAD TRAFFIC SIGNALS TO THE NEW BASE.
5. PRIOR TO REMOVAL OF EXISTING TRAFFIC SIGNAL BASE TS1, COORDINATE WITH TRAFFIC ENGINEERING, MIKE CHRISTOPH, TO HAVE CITY CREWS INSTALL A TEMPORARY SIGNAL BEFORE THE POLE AND BASE IS REMOVED.
6. ALL EXISTING CONDUITS ARE TO REMAIN UNLESS AND UNTIL AUTHORIZED TO REMOVE BY TRAFFIC ENGINEERING.
7. THE CONTRACTOR SHALL INSTALL LOOP LEED DUCT CONDUITS PRIOR TO CITY CREWS INSTALLING LOOP DETECTOR WIRES. NOTIFY MIKE CHRISTOPH (266-4767) A MINIMUM OF 24 HOURS AND MAXIMUM OF 48 HOURS PRIOR TO FINAL BASE COURSE COMPACTION AND TRIMMING FOR CITY CREWS TO INSTALL LOOP DETECTION WIRES IN THE BASE COURSE PRIOR TO PLACEMENT OF ASPHALTIC PAVEMENT.
8. THE FOLLOWING CITY FURNISHED MATERIALS ARE TO BE PICKED UP AT THE TRAFFIC TRAFFIC OPERATION SHOP, 1120 SAYLE STREET. NOTIFY DENNIS ROWE AT 266-9034 TWENTY FOUR (24) HOURS PRIOR TO PICKING UP THE MATERIAL.

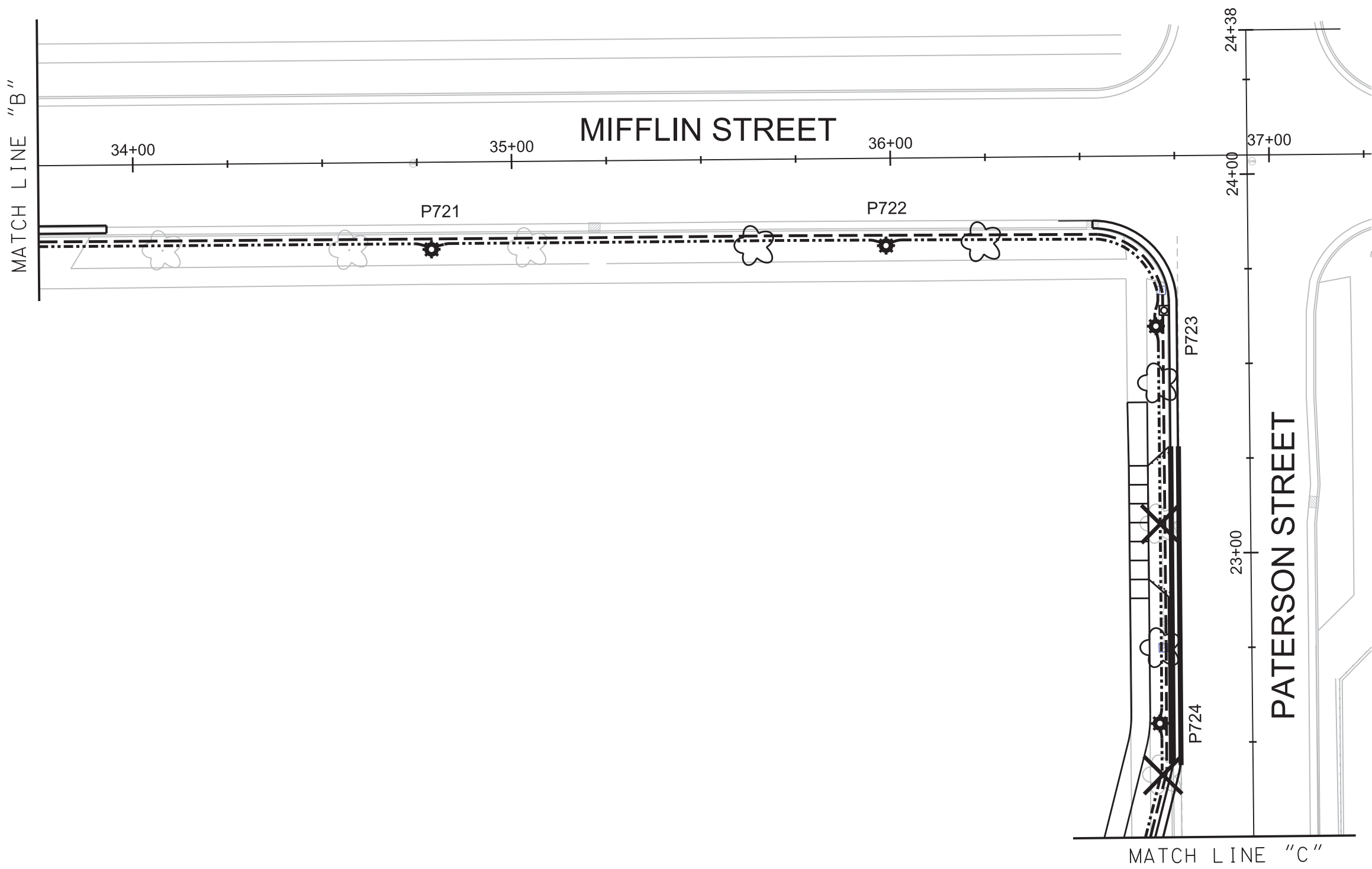
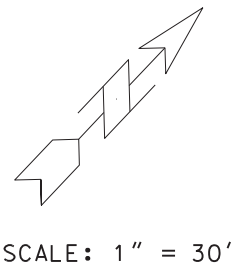
3/4" x 24" ANCHOR BOLTS:	44
3/4" x 19" ANCHOR BOLTS:	4
1" x 40" ANCHOR BOLTS:	8
1.25" x 48" ANCHOR BOLTS:	4
TYPE-1 ELECTRICAL HANDHOLE:	3
TYPE-3 ELECTRICAL HANDHOLE:	2

LEGEND

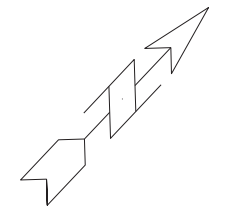
- PLACE STREET LIGHTING PVC CONDUIT, 2" UNLESS NOTED AS OTHER
- PLACE SIGNAL/COMMUNICATION PVC CONDUIT, 2" UNLESS NOTED AS OTHER
- EXISTING STREET LIGHTING CONDUIT
- EXISTING SIGNAL/COMMUNICATION CONDUIT
- FO- EXISTING CONDUIT WITH FIBER OPTIC CABLE
- ☐ INSTALL CITY FURNISHED TYPE-1 ELECTRICAL HANDHOLE
- ☐ INSTALL CITY FURNISHED TYPE-3 ELECTRICAL HANDHOLE
- ⊗ CONSTRUCT LB-1 BASE
- ⊗ CONSTRUCT TYPE G BASE
- ⊗ CONSTRUCT LB-SP OR LB-SP2 BASE AS NOTED
- ☉ EXISTING STREET LIGHT POLE/BASE
- ☉ EXISTING TRAFFIC SIGNAL POLE/BASE
- ☐ EXISTING TYPE-1 ELECTRICAL HANDHOLE
- ☐ EXISTING TYPE-3 ELECTRICAL HANDHOLE
- ☐ EXISTING TYPE-7 ELECTRICAL HANDHOLE
- ⊙ EXISTING ELECTRICAL ACCESS STRUCTURE
- ⊗ EXISTING CONTROLLER CABINET BASE







MATCH LINE "C"



SCALE: 1" = 30'

LOOP DETECTORS (TYPICAL) TO BE INSTALLED BY CITY CREWS (SEE NOTE 7)

INSTALL 1 1/4" PVC CONDUIT

REMOVE ELECTRICAL HANDHOLE

REMOVE ELECTRICAL HANDHOLE

REMOVE TRAFFIC SIGNAL BASE (SEE NOTE 5)

CONSTRUCT TYPE "G" BASE

CONSTRUCT LB-SP2 BASE

REMOVE STREET LIGHT BASE

INSTALL 3" PVC CONDUIT

TS1

SL63A

REMOVE STREET LIGHT BASE (SEE NOTE 4)

INSTALL 3" PVC CONDUIT

INSTALL PVC CONDUIT TO MATCH EXISTING

CONSTRUCT LB-SP BASE

EAST WASHINGTON AVE

MATCH LINE "D"

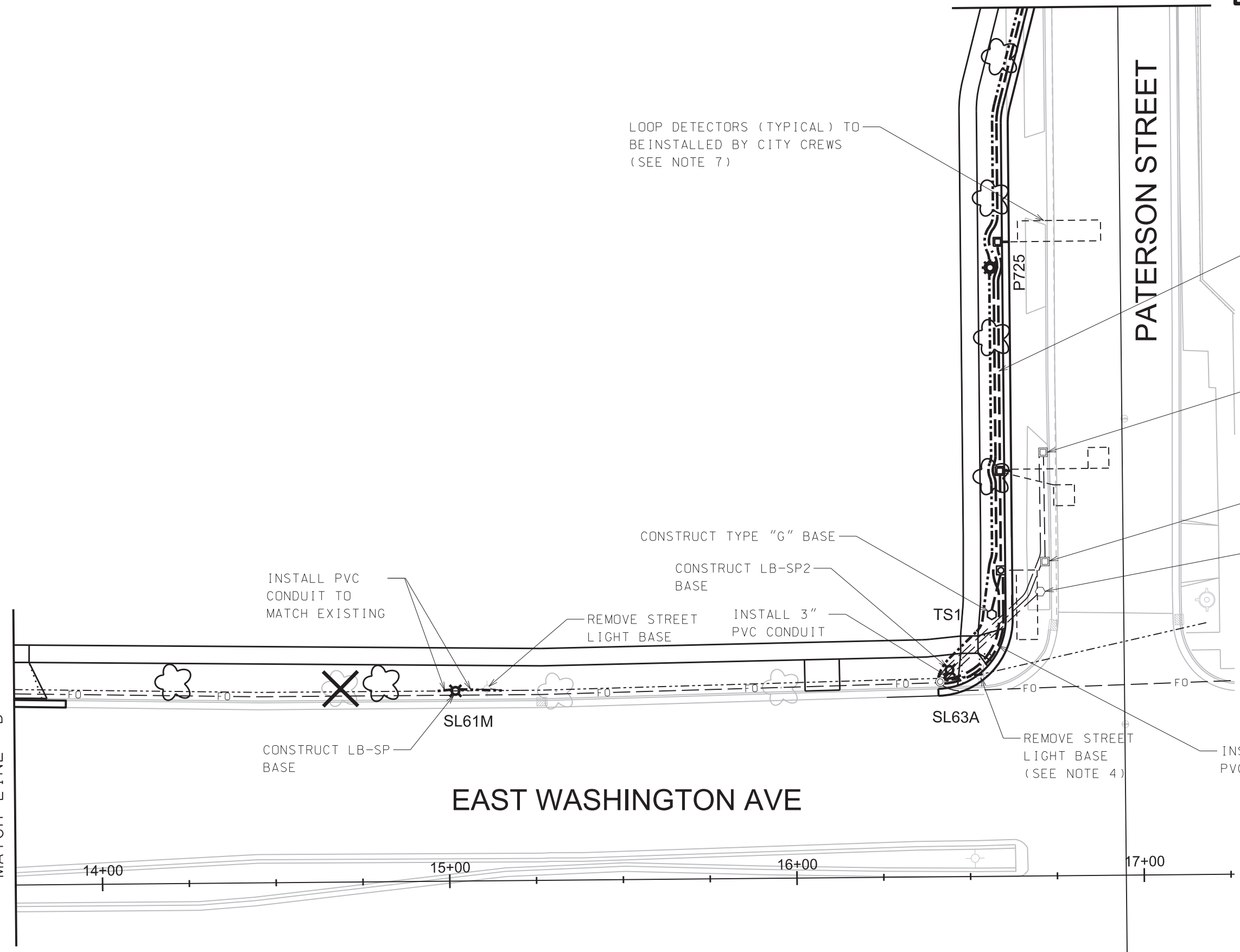
14+00

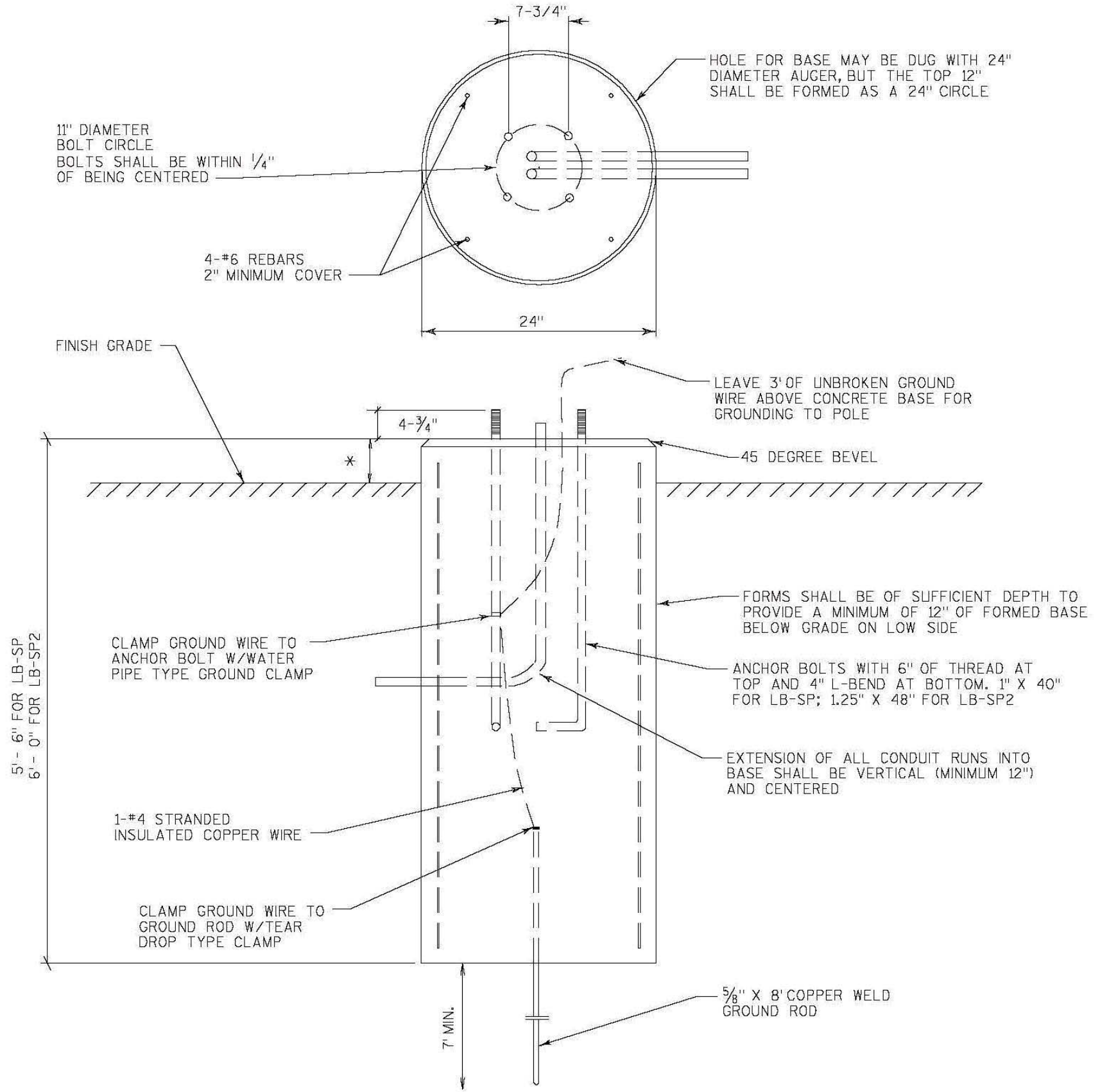
15+00

16+00

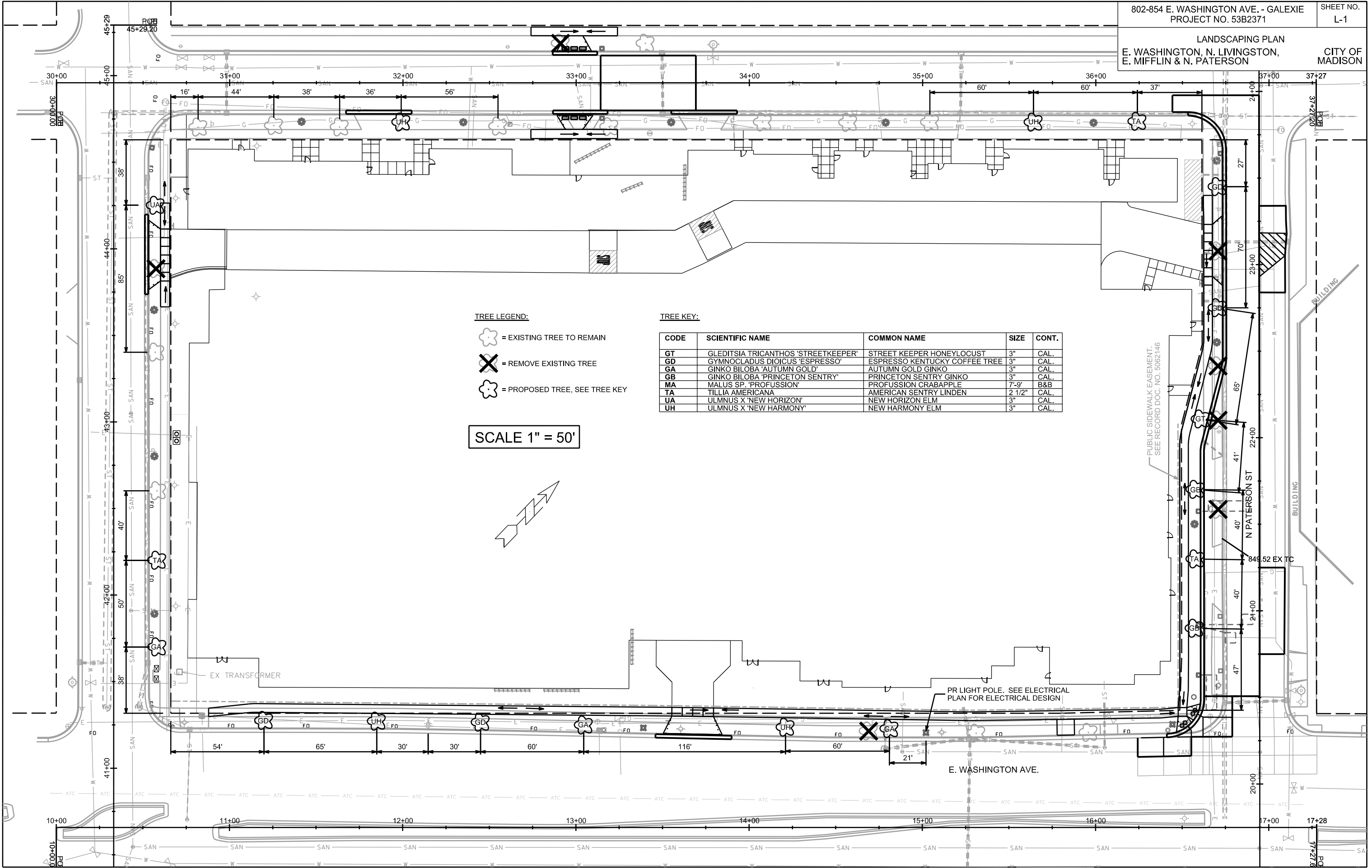
17+00

PATERSON STREET





CONCRETE BASE TYPE LB-SP & LB-SP2

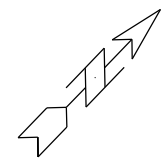


- TREE LEGEND:**
- = EXISTING TREE TO REMAIN
 - = REMOVE EXISTING TREE
 - = PROPOSED TREE, SEE TREE KEY

TREE KEY:

CODE	SCIENTIFIC NAME	COMMON NAME	SIZE	CONT.
GT	GLEDITSIA TRICANTHOS 'STREETKEEPER'	STREET KEEPER HONEYLOCUST	3"	CAL.
GD	GYMNOCLADUS DIOICUS 'ESPRESSO'	ESPRESSO KENTUCKY COFFEE TREE	3"	CAL.
GA	GINKO BILOBA 'AUTUMN GOLD'	AUTUMN GOLD GINKO	3"	CAL.
GB	GINKO BILOBA 'PRINCETON SENTRY'	PRINCETON SENTRY GINKO	3"	CAL.
MA	MALUS SP. 'PROFUSSION'	PROFUSSION CRABAPPLE	7-9'	B&B
TA	TILLIA AMERICANA	AMERICAN SENTRY LINDEN	2 1/2"	CAL.
UA	ULMUS X 'NEW HORIZON'	NEW HORIZON ELM	3"	CAL.
UH	ULMUS X 'NEW HARMONY'	NEW HARMONY ELM	3"	CAL.

SCALE 1" = 50'



PLOT SCALE: _____
PLOT NAME: _____
REV. DATE: _____

ORIGINATOR: CITY OF MADISON, STREETS DIVISION