

Madison, Wisconsin

CITY OF MADISON

CITY ENGINEERING DIVISION DEPARTMENT OF PUBLIC WORKS

SANITARY SEWER EXTENSION

THE WILLOWS - OFFSITE UTILITIES ONLY

INDEX OF SHEETS

SHEET NO.	TITLE
1	UTILITY PLAN & PROFILE
U1-U4	SANITARY SEWER SCHEDULE

PLOT SCALE:

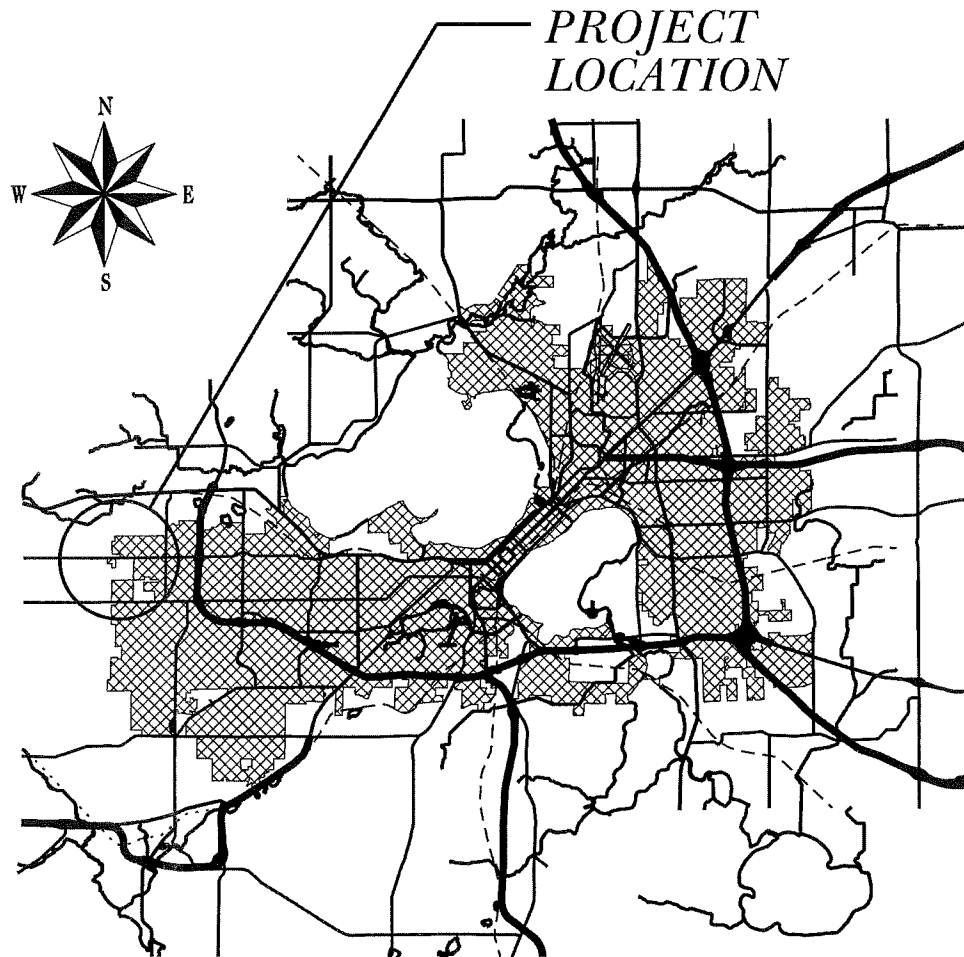
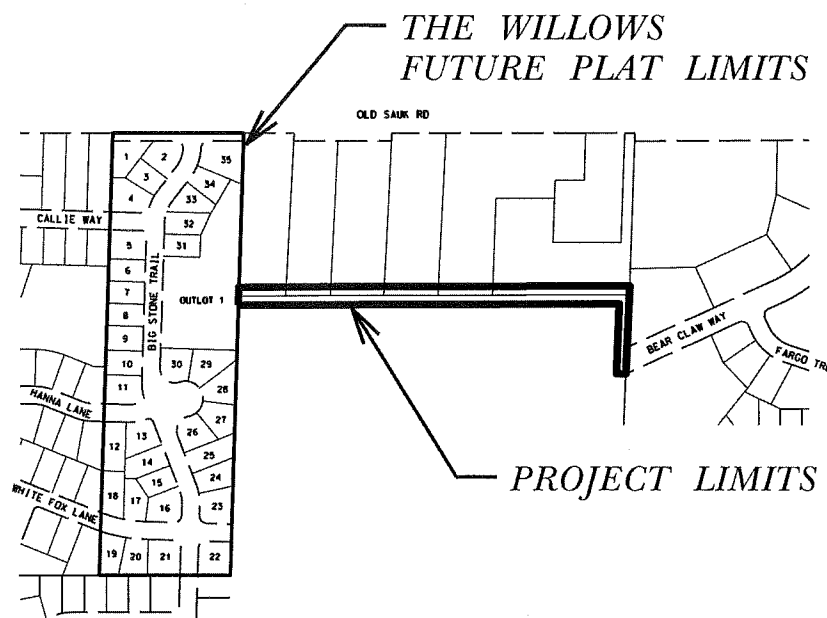
PLOT NAME:

REV. DATE:

ORIGINATOR: CITY OF MADISON, STREETS DIVISION

CONVENTIONAL SIGNS	
FIELD VERIFY ALL UTILITY LOCATIONS	
FIBER OPTIC	FO
TELEPHONE	T
GAS	G
STORM SEWER	ST
SANITARY SEWER	SAN
WATER	W
OVERHEAD ELECTRIC	OH
POWER POLE	[Symbol]
ADA COMPLIANT RAMP W/ DETECTABLE WARNING FIELD	[Symbol]
COMBUSTIBLE FLUIDS	CAUTION [Symbol]

PROJECT NO. 10513
CONTRACT NO. 2419



PUBLIC IMPROVEMENT PROJECT
APPROVED

FEB 24, 2015

BY THE COMMON COUNCIL
OF MADISON, WISCONSIN

PUBLIC IMPROVEMENT DESIGN
APPROVED BY:

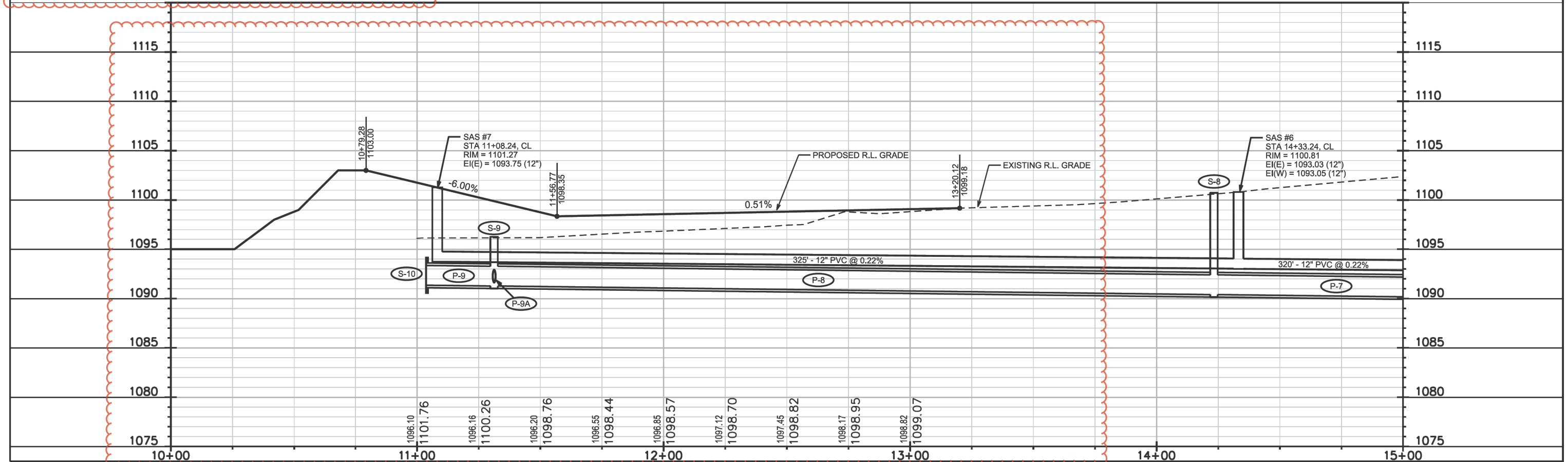
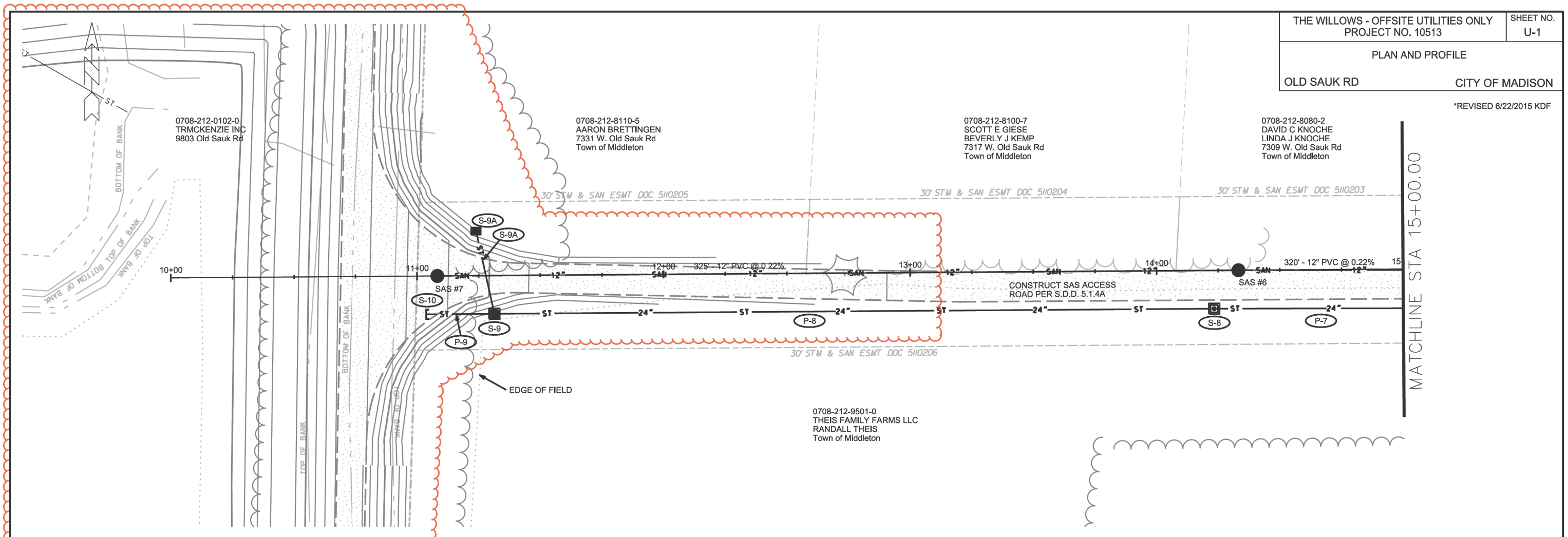
Michael R. O'Leary 3/25/2014
 City Engineer Date

SANITARY SEWER
DESIGNED BY:

Mark Moder
 PROFESSIONAL ENGINEER
 MADISON, WI
 E-33979
 3/25/15

STORM SEWER
DESIGNED BY:

Gregory Fries
 PROFESSIONAL ENGINEER
 MADISON, WI
 E-33656
 3/26/15



PLOT SCALE:

PLOT NAME:

REV. DATE:

ORIGINATOR: CITY OF MADISON, STREETS DIVISION



MATCHLINE STA 15+00.00

MATCHLINE STA 20+00.00

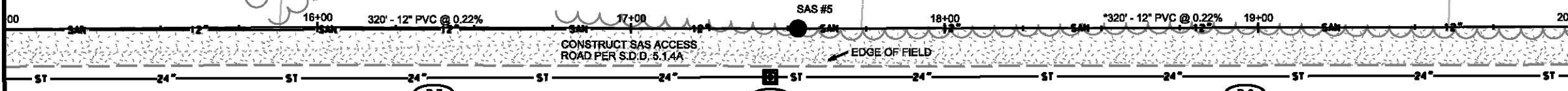
0708-212-8080-2
DAVID C KNOCHE
LINDA J KNOCHE
7309 W. Old Sauk Rd
Town of Middleton

0708-212-8070-4
MILO J BREUNIG
PHYLLIS BREUNIG
7293 W. Old Sauk Rd
Town of Middleton

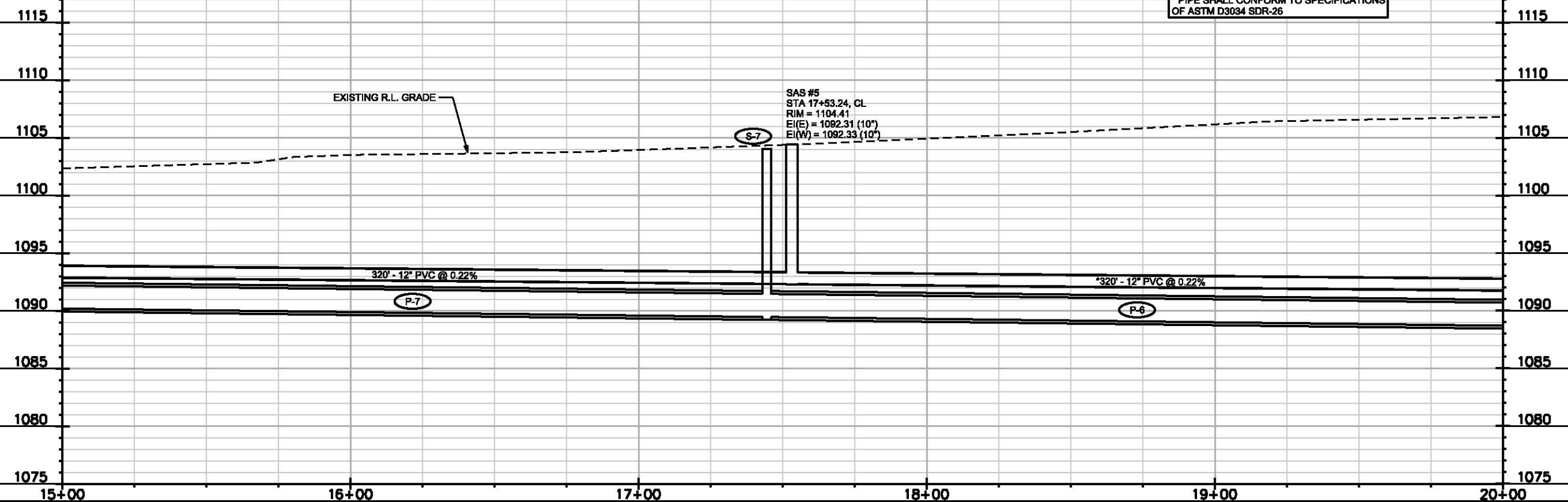
0708-212-8025-9
NELSON JT REC TR
ERIC F & SANDRA K
7271 W. Old Sauk Rd
Town of Middleton

0708-212-8005-0
MARICRIS NELSON
7267 W. Old Sauk Rd
Town of Middleton

30' STM & SAN ESMT DOC 510203 30' STM & SAN ESMT DOC 510202 30' STM & SAN ESMT DOC 510201 30' STM & SAN ESMT DOC 510200



0708-212-9501-0
THEIS FAMILY FARMS LLC
RANDALL THEIS
Town of Middleton

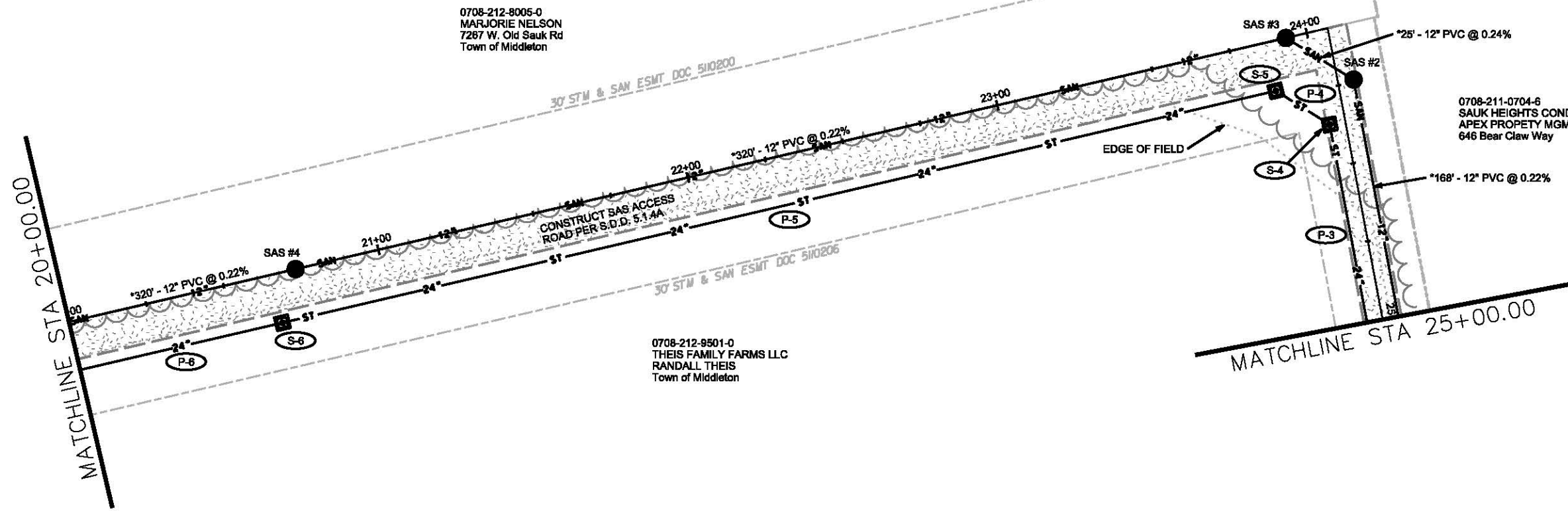
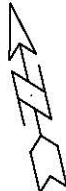


PLOT SCALE:

PLOT NAME:

REV. DATE:

ORIGINATOR: CITY OF MADISON, STREETS DIVISION



0708-212-8005-0
MARJORIE NELSON
7267 W. Old Sauk Rd
Town of Middleton

0708-211-0704-6
SAUK HEIGHTS CONDOS ASSN
APEX PROPERTY MGMT
646 Bear Claw Way

0708-212-8501-0
THEIS FAMILY FARMS LLC
RANDALL THEIS
Town of Middleton

MATCHLINE STA 20+00.00

MATCHLINE STA 25+00.00

30' STM & SAN ESMT DOC 510200

30' STM & SAN ESMT DOC 510206

CONSTRUCT BAS ACCESS ROAD PER S.D.D. 5.1.4A.

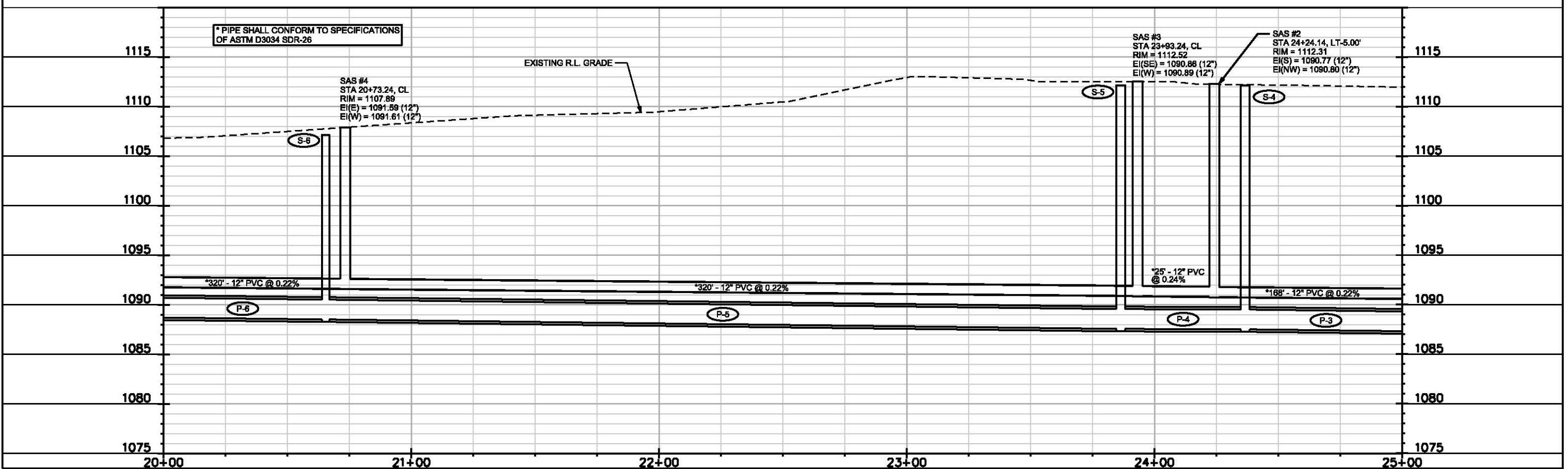
EDGE OF FIELD

PLOT SCALE:

PLOT NAME:

REV. DATE:

ORIGINATOR: CITY OF MADISON, STREETS DIVISION



* PIPE SHALL CONFORM TO SPECIFICATIONS OF ASTM D3034 SDR-26

EXISTING R.L. GRADE

SAS #4
STA 20+73.24, CL
RIM = 1107.89
EI(E) = 1091.59 (12")
EI(W) = 1091.61 (12")

SAS #3
STA 23+93.24, CL
RIM = 1112.52
EI(SE) = 1090.88 (12")
EI(W) = 1090.89 (12")

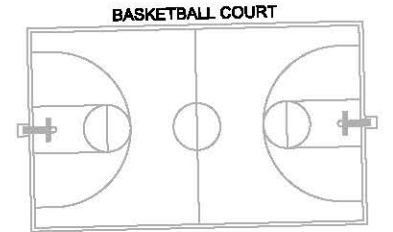
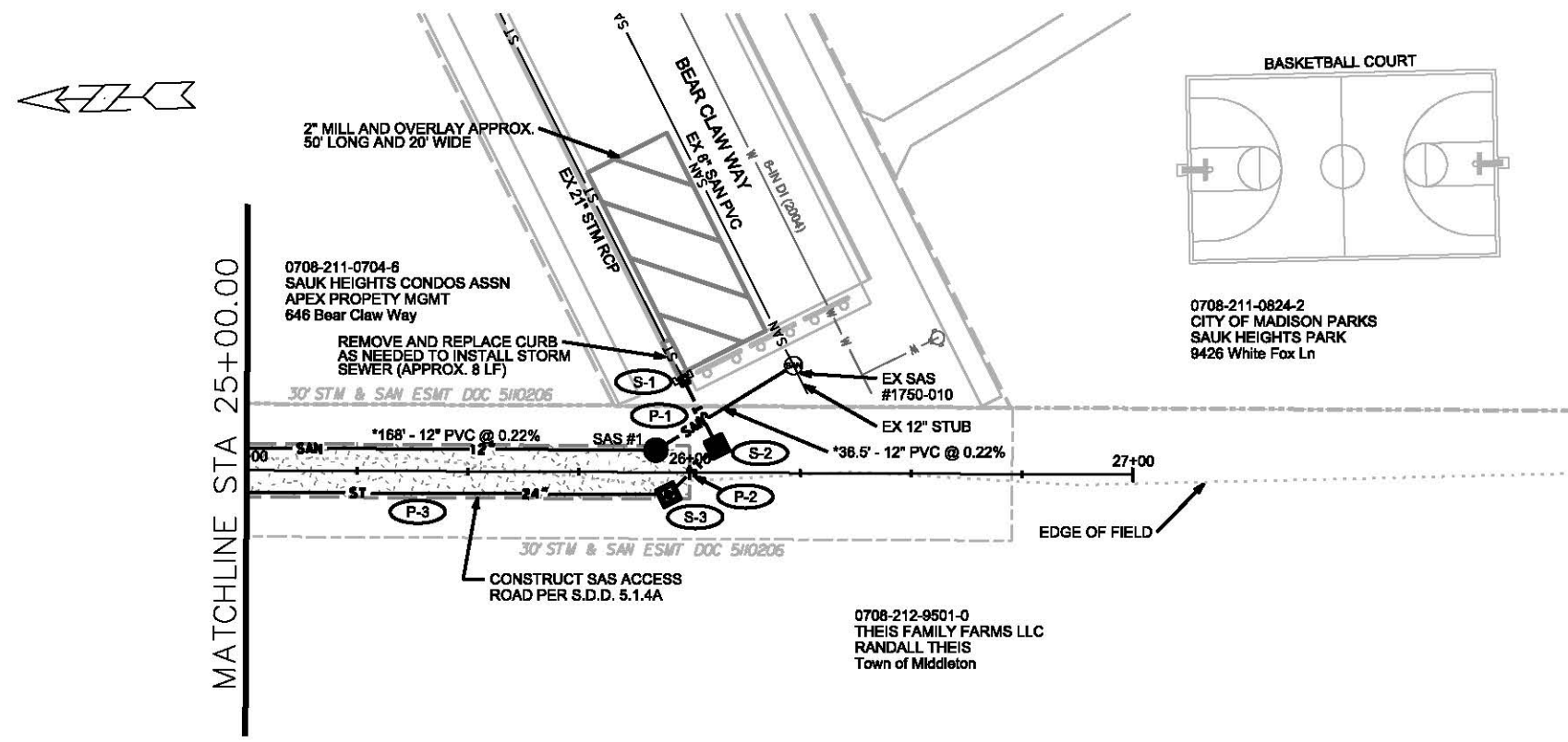
SAS #2
STA 24+24.14, LT-5.00'
RIM = 1112.31
EI(S) = 1090.77 (12")
EI(NW) = 1090.80 (12")

*320' - 12" PVC @ 0.22%

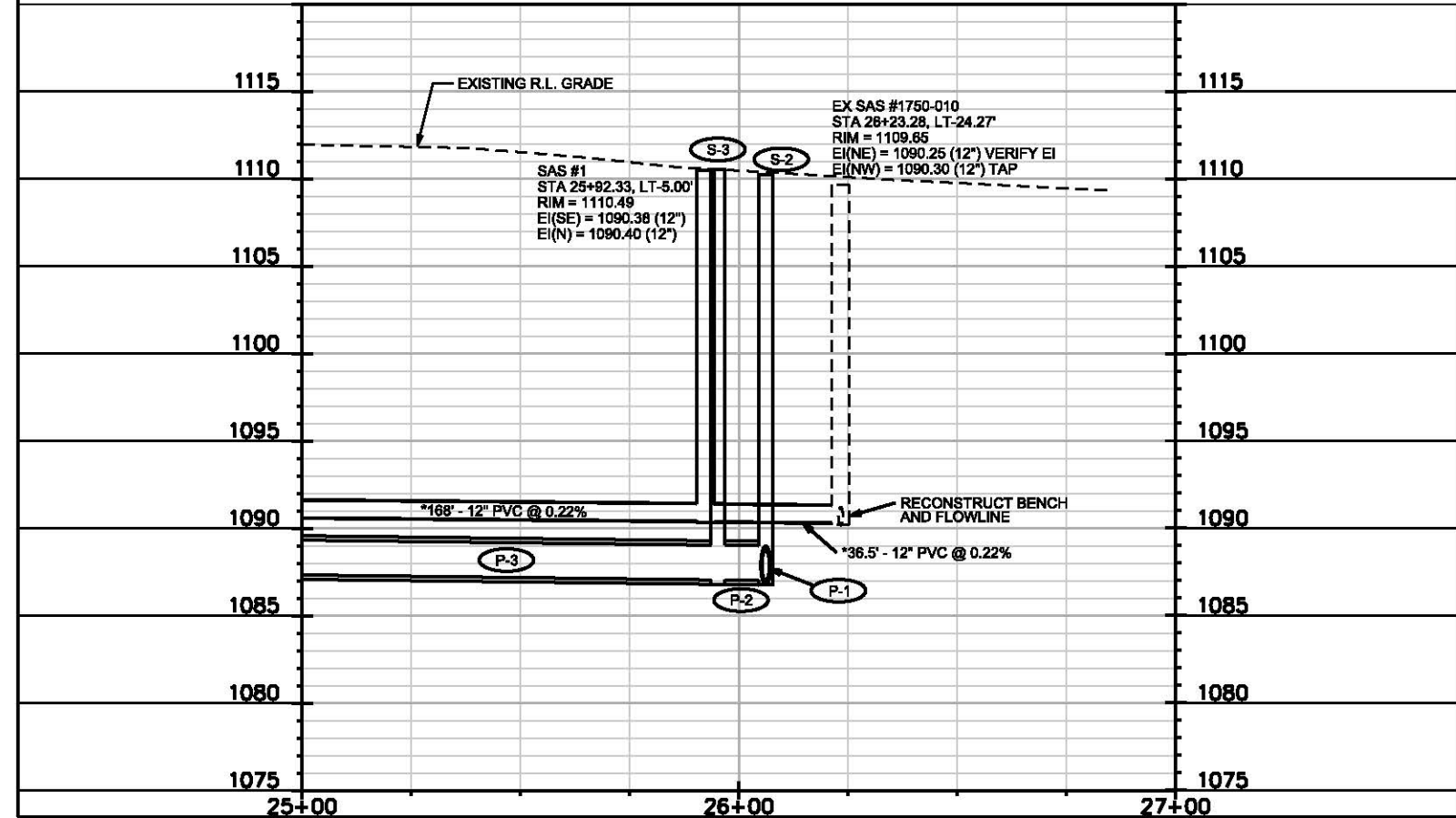
*320' - 12" PVC @ 0.22%

*25' - 12" PVC @ 0.24%

*168' - 12" PVC @ 0.22%



* PIPE SHALL CONFORM TO SPECIFICATIONS
OF ASTM D3034 SDR-26



PLOT SCALE:

PLOT NAME:

REV. DATE:

ORIGINATOR: CITY OF MADISON, STREETS DIVISION

SANITARY SEWER SCHEDULE

PROPOSED SANITARY STRUCTURES

SAS NO.	STATION	LOCATION (OFFSET)	TOP OF CASTING	E.I.	DEPTH	NOTES
EASEMENT						
SAS #1	25+92.33	LT-5.00	1110.49	1090.38	20.11	(1)
SAS #2	24+24.14	LT-5.00	1112.31	1090.77	21.54	(1)
SAS #3	23+93.24	CL	1112.52	1090.86	21.66	(1)
SAS #4	20+73.24	CL	1107.89	1091.59	16.30	(1)
SAS #5	17+53.24	CL	1104.41	1092.31	12.10	(1)
SAS #6	14+33.24	CL	1100.81	1093.03	7.78	(1)
* SAS #7	11+08.24	CL	1101.27	1093.75	7.52	(1)

PROPOSED SANITARY PIPES

FROM (DNSTM)	TO (UPSTM)	DWNSTRM E.I.	UPSTRM E.I.	PLAN (PAY) LGTH (FT)	SLOPE (%)	PIPE SIZE	PVC TYPE	NOTES	*REVISED 6/22/2015 KDF
EASEMENT									
EX SAS #1750-010	SAS #1	1090.30	1090.38	36.5	0.22%	12"	SDR-26	-	
SAS #1	SAS #2	1090.40	1090.77	168	0.22%	12"	SDR-26	-	
SAS #2	SAS #3	1090.80	1090.86	25	0.24%	12"	SDR-26	-	
SAS #3	SAS #4	1090.89	1091.59	320	0.22%	12"	SDR-26	-	
SAS #4	SAS #5	1091.61	1092.31	320	0.22%	12"	SDR-26	-	
SAS #5	SAS #6	1092.33	1093.03	320	0.22%	12"	SDR-35	-	
SAS #6	SAS #7	1093.05	1093.75	325	0.22%	12"	SDR-35	-	

STORM SEWER SCHEDULE

PROPOSED STORM STRUCTURES

STRUC. NO.	STATION	LOCATION (OFFSET)	TYPE	TOP OF CASTING	E.I.	DEPTH	NOTES
EASEMENT							
S-1	25+98.60	LT-20.73	COLLAR	-	1086.92	-	-
S-2	26+06.11	LT-5.91	3X3 SAS	1110.25	1087.00	23.25	W/R-3067-7004-V
S-3	25+95.19	RT-5.00	3X3 SAS	1110.53	1087.04	23.49	W/R-1916C-0054
S-4	24+36.65	RT-5.00	3X3 SAS	1112.13	1087.51	24.62	W/R-1050-0054
S-5	23+86.36	RT-15.50	3X3 SAS	1112.13	1087.56	24.57	W/R-1050-0054
S-6	20+65.36	RT-15.50	3X3 SAS	1107.14	1088.51	18.63	W/R-1050-0054
S-7	17+44.44	RT-15.50	3X3 SAS	1104.05	1089.46	14.59	W/R-1050-0054
S-8	14+23.29	RT-15.50	3X3 SAS	1100.73	1090.41	10.32	W/R-1050-0054
* S-9	11+31.27	RT-15.50	3X3 SAS	1096.27	1091.28	4.99	W/R-1878-B7G
* S-9A	11+24.06	LT-18.09	H INLET	1096.00	1091.94	4.06	W/R-1878-B7G
* S-10	11+04.04	RT-15.50	PLUG	-	1091.36	-	-

PROPOSED STORM PIPES

PIPE NO.	FROM (DNSTM)	TO (UPSTM)	DISCH. E.I.	INLET E.I.	PLAN (PAY) LGTH (FT)	PIPE LGTH (FT)	SLOPE (%)	PIPE SIZE	TYPE	NOTES
EASEMENT										
P-1	S-1	S-2	1086.92	1087.00	16.5	15.1	0.53%	21"	RCP	-
P-2	S-2	S-3	1087.00	1087.04	15.5	12.2	0.33%	24"	RCP	NCM
P-3	S-3	S-4	1087.04	1087.51	158.5	155.4	0.30%	24"	RCP	-
P-4	S-4	S-5	1087.51	1087.56	20	15.8	0.32%	24"	RCP	-
P-5	S-5	S-6	1087.56	1088.51	321	318	0.30%	24"	RCP	-
P-6	S-6	S-7	1088.51	1089.46	321	318	0.30%	24"	RCP	-
P-7	S-7	S-8	1089.46	1090.41	321	318	0.30%	24"	RCP	-
P-8	S-8	S-9	1090.41	1091.28	292	289	0.30%	24"	RCP	-
* P-9	S-9	S-10	1091.28	1091.36	27.5	26	0.31%	24"	RCP	-
* P-9A	S-9	S-9A	1091.78	1091.94	34.5	31.8	0.50%	12"	STM PIPE	NCM

NOTE: PLAN LENGTH (PAY LENGTH) IS FROM CENTER OF STRUCTURE TO CENTER OF STRUCTURE. PIPE LENGTH IS ACTUAL LENGTH OF PIPE FROM STRUCTURE WALL TO STRUCTURE WALL. SLOPE CALCULATED USING PIPE LENGTH.

SPECIFIC NOTES

(1) INSTALL SAS CASTING R-1916C-0054, LOCKING LID WITH LOGO COVER HEX BOLTED TO SAS CHIMNEY (NO ADJUSTMENT RINGS)

STANDARD NOTES:

- ABBREVIATIONS: AE = APRON ENDWALL; RCP = REINFORCED CONCRETE PIPE; HERCP = HORIZONTAL ELLIPTICAL REINFORCED CONCRETE PIPE; DNA = DOES NOT APPLY; SAS = SEWER ACCESS STRUCTURE; LP = LOW POINT INLET STRUCTURE; FP = FIELD POURED STRUCTURE; TR = TOP OF CONCRETE ROOF; NCM = NO CROWN MATCH FOR PIPES; UD = UNDERDRAIN

- APPROXIMATE DISCHARGE E.I. GIVEN, ADJUST E.I. AND PIPE SLOPE IN THE FIELD.

- TOP OF CASTING GRADE GIVEN IS THE TOP OF CURB FOR INLET STRUCTURES AND THE FLOWLINE OF THE CLOSED CASTING FOR SAS'S.

- TOP OF CONCRETE ROOF (TR) IS 1.25' BELOW TOP OF CASTING UNLESS OTHERWISE NOTED.

- ALL REINFORCED CONCRETE PIPES TO BE CLASS III UNLESS OTHERWISE NOTED.

- SURVEYOR TO CONFIRM THAT ALL INLET STATION / OFFSETS LINE UP WITH PROPOSED CURB AND GUTTER.

- ALL STRUCTURES CALLED OUT AS FIELD POURED SHALL BE FIELD POURED. ALL OTHER STRUCTURES (NOT INDICATED AS FIELD POURED) SHALL BE SUBMITTED TO CITY ENGINEERING FOR APPROVAL IF PRECAST STRUCTURES ARE PREFERRED. CONTACT KYLE FRANK OF CITY ENGINEERING AT (608) 266-4098 FOR PRECAST APPROVALS, FAX SHOP DRAWINGS TO (608)264-9275, OR EMAIL SHOP DRAWINGS TO KRANK@CITYOFMADISON.COM.