

CITY OF MADISON

CITY ENGINEERING DIVISION

DEPARTMENT OF PUBLIC WORKS

PLAN OF PROPOSED IMPROVEMENT

PUBLIC IMPROVEMENT PROJECT
 APPROVED: 4/21/2015
 RES-15-00360 FILE: 37820

BY THE COMMON COUNCIL
 OF MADISON, WISCONSIN

PUBLIC IMPROVEMENT DESIGN
 APPROVED BY:

[Signature] 7/21/15
 City Engineer Date

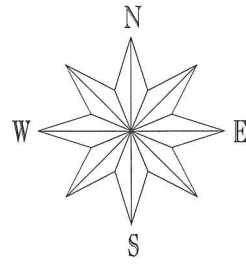
SANITARY SEWER
 DESIGNED BY:

PLANS PROVIDED BY CONSULTANT:
 KIMLEY-HORN AND ASSOCIATES

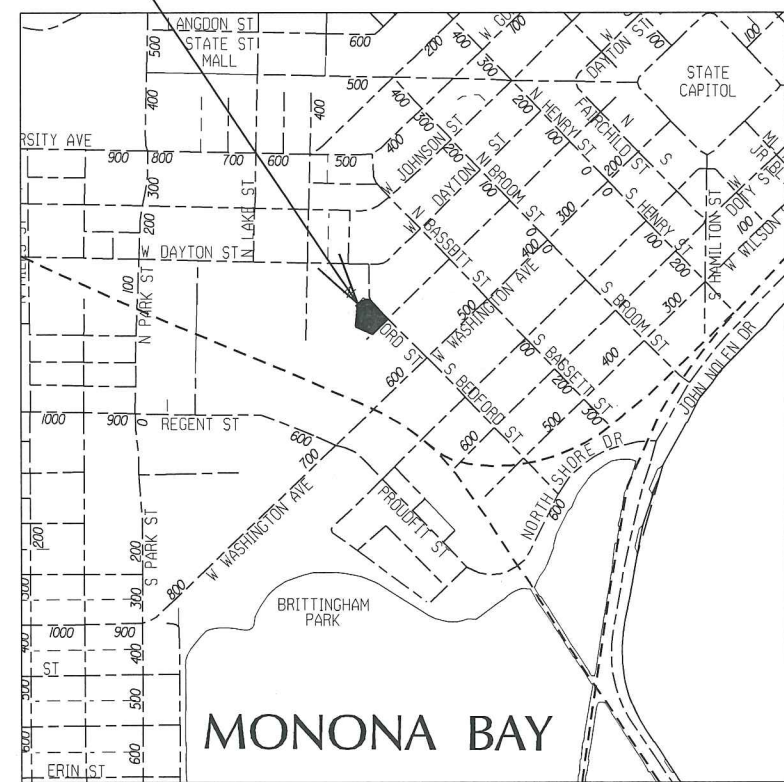
INDEX OF SHEETS

SHEET NO.	TITLE
1	DETAILS
D1-D2	DETAILS
P1	SIDEWALK PLAN & PROFILE: W. MIFFLIN ST.
P2	SIDEWALK PLAN & PROFILE: N. BEDFORD ST.
U1	SANITARY PLAN & PROFILE
U2	STORM SEWER AND WATER UTILITY PLAN
E1	ELECTRICAL PLAN

114 N. BEDFORD ST.
 CITY PROJECT NO. 10869
 CONTRACT NO. 2431
 MUNIS NO. 10869



CONSTRUCTION PROJECT LOCATION



ELECTRICAL
 DESIGNED BY:

STREET AND SIDEWALK
 DESIGNED BY:

WATER
 DESIGNED BY:

STORM SEWER
 DESIGNED BY:

CONVENTIONAL SIGNS

FIELD VERIFY ALL UTILITY LOCATIONS

GAS	— G —
STORM SEWER	— ST —
SANITARY SEWER	— SAN —
WATER	— W —
OVERHEAD ELECTRIC	— OH —
UNDERGROUND ELECTRIC	— E —
UNDERGROUND ELECTRIC AMERICAN TRANSMISSION CO.	— ATC — ATC
POWER POLE	⊕
ADA COMPLIANT RAMP W/ DETECTABLE WARNING FIELD	
COMBUSTIBLE FLUIDS	

PLOT SCALE:

PLOT NAME:

REV. DATE:

ORIGINATOR: CITY OF MADISON, STREETS DIVISION

CONTRACTOR/DEVELOPER SHALL SUBMIT A TRAFFIC CONTROL PLAN TO CITY TRAFFIC ENGINEERING AT LEAST 10 WORKING DAYS PRIOR TO THE START OF WORK. WORK WITHIN THE RIGHT-OF-WAY SHALL NOT BEGIN UNTIL THE TRAFFIC CONTROL PLAN IS APPROVED.

ANY PAVEMENT MARKINGS THAT ARE REMOVED OR DAMAGED SHALL BE REPLACED BY THE DEVELOPER/CONTRACTOR AS DIRECTED BY CITY TRAFFIC ENGINEERING.

THE LOCATION AND INFORMATION FOR PROPOSED NEW TREES, IN THE PUBLIC RIGHT OF WAY OR ON PUBLIC LANDS ARE APPROXIMATE AND ARE SHOWN FOR REFERENCE ONLY.

CONTRACTOR SHALL CONTACT DEAN KAHL WITH CITY FORESTRY (266-4891 OR 266-4816) AT LEAST ONE WEEK PRIOR TO PLANTING TO ALLOW FORESTRY TO MARK THE PLANTING SITES AND REVIEW PLANTING SPECIFICATIONS WITH THE LANDSCAPING CONTRACTOR. TREE PLANTING WITHIN THE PUBLIC RIGHT OF WAY OR ON PUBLIC LANDS SHALL BE APPROVED BY THE CITY FORESTER PRIOR TO INSTALLATION.

NO TREES IN THE RIGHT OF WAY OR ON PUBLIC LANDS SHALL BE TRIMMED, PRUNED, REMOVED OR ADVERSELY AFFECTED IN ANY WAY UNTIL THE DEVELOPER HAS RECEIVED WRITTEN PERMISSION FROM THE CITY ENGINEER OR CITY FORESTER. SAID WRITTEN PERMISSION SHALL INCLUDE LANGUAGE INDICATING THAT SECTION 10.101 OF THE MADISON GENERAL ORDINANCES AND ADMINISTRATIVE PROCEDURE MEMORANDUM NO. 6-2, REFERING TO NOTIFICATION OF PROPERTY OCCUPANTS AND/OR OWNERS, HAS BEEN COMPLIED WITH.

COORDINATE ALL UTILITY WORK WITH AMERICAN TRANSMISSION COMPANY. IN PARTICULAR, THE WATER WORK AND SANITARY SEWER WORK IS IN CLOSE VICINITY TO 2 EXISTING AMERICAN TRANSMISSION COMPANY 69 KV PIPES. CONTACT DOUG VOSBERG 3 DAYS PRIOR TO THE START OF THE CONSTRUCTION WORK AT 608-877-7650 (OFFICE) OR 608-438-7650 (CELL). AN ATC REPRESENTATIVE MUST BE ON SITE TO SUPERVISE THE WORK NEAR ATC UNDERGROUND FACILITIES. ATC MUST ALSO BE CONTACTED TO ARRANGE FOR ONSITE PERSONNEL DURING ATC LOCATE.

THE CONTRACTOR SHALL NOT REMOVE TRAFFIC SIGNS. FOR REMOVAL OR REPLACEMENT OF TRAFFIC AND PARKING SIGNS, CONTACT THE CITY OF MADISON TRAFFIC ENGINEERING FIELD OPERATIONS, 1120 SAYLE STREET, 266-4767, 8:00 A.M. TO 4:00 P.M., A MINIMUM OF ONE (3) WORKING DAY IN ADVANCE OF WHEN ANY EXISTING SIGNS NEED TO BE REMOVED. THIS SERVICE IS PROVIDED FREE OF CHARGE. IF THE CONTRACTOR REMOVES THE SIGNS, THE CONTRACTOR WILL BE BILLED FOR THE REINSTALLATION OF, AND ANY DAMAGE TO, THE SIGNING EQUIPMENT.

CONTACT CITY OF MADISON WATER UTILITY TO OBTAIN CONNECTION PERMIT FOR WATER SERVICE. CONTACT MADISON WATER UTILITY CONSTRUCTION SUPERVISOR, JEFF BELSHAW (608-261-9835), FOR INSPECTION DURING WATERMAIN AND WATER SERVICE INSTALLATIONS IN CITY R.O.W.

ALL PAVEMENT WITHIN THE BEDFORD STREET AND MIFFLIN STREET RIGHT-OF-WAY SHALL BE TYPE C PER STANDARD DETAIL DRAWING 4.02

ALL GUTTERS SHALL DRAIN WITH A MINIMUM GRADES OF 0.5% TOWARD STORM SEWER INLETS.

THE CROSS SLOPE OF SIDEWALKS AND BARRIER FREE SIDEWALK CURB RAMPS SHALL BE 2%. THE LONGITUDINAL GRADE OF BARRIER FREE SIDEWALK CURB RAMPS SHALL NOT EXCEED 8.33%. ALL SIDEWALK RAMPS SHALL BE CONSTRUCTED ACCORDING TO S.D.D. 3.03. AT ALL OTHER LOCATIONS THE LONGITUDINAL GRADE OF SIDEWALKS SHALL NOT EXCEED 5.0 % OR THE ADJACENT STREET GRADE WHICHEVER IS GREATER NOR BE LESS THAN 0.4% AND SHALL DRAIN TOWARD STORM SEWER INLETS. SIDE SLOPES WITHIN TEN FEET OF A PUBLIC SIDEWALK SHALL NOT EXCEED 4.00:1. ALL SIDEWALK AND SIDEWALK RAMP ELEVATIONS AND GRADES SHALL BE FIELD VERIFIED AND SET TO COMPLY WITH THE CITY OF MADISON STANDARD SPECIFICATIONS AND THE A.D.A. GUIDELINES.

OBTAIN A PRINT OUT OF THE ALIGNMENT FROM THE CITY ENGINEER PRIOR TO STAKING THIS PROJECT.

CURB STATION AND OFFSETS SHALL BE TO THE FACE OF CURB UNLESS OTHERWISE INDICATED. CURB ELEVATIONS SHALL BE TO THE TOP OF CURB (OR EXTENDED TOP OF CURB FOR DRIVEWAYS OR RAMPS) UNLESS OTHERWISE INDICATED.

POWER POLES AND OTHER OBSTRUCTIONS SHALL BE MOVED TO PROVIDE 2 FEET MINIMUM OF CLEAR DISTANCE FROM ANY FACE OF CURB OR EDGE OF SIDEWALK.

ANY INFORMATION SHOWN ON THIS PLAN, WHICH IS NOT PART OF THIS PROJECT, IS PRELIMINARY AND NOT FOR CONSTRUCTION.

THERE MAY BE EXISTING UTILITIES OR OTHER FEATURES WHICH ARE EITHER NOT SHOWN OR SHOWN INCORRECTLY ON THIS PLAN. IT IS THE RESPONSIBILITY OF THE DEVELOPER TO LOCATE AND IDENTIFY ALL UTILITIES AND TOPOGRAPHY WHICH MAY AFFECT THE CONSTRUCTION OF THESE IMPROVEMENTS.

ALL PERMANENT SIGNING AND POSTING WILL BE DETERMINED AND PROVIDED BY THE TRAFFIC ENGINEERING DIVISION, FOLLOWING CONSTRUCTION OF THESE IMPROVEMENTS.

THE DEVELOPER SHALL PROVIDE, INSTALL AND MAINTAIN ALL STREET END BARRICADES, SIGNING AND TRAFFIC CONTROL, AS REQUIRED BY THE CITY TRAFFIC ENGINEER.

PAVEMENT SAWCUTS SHALL BE AS DIRECTED BY THE CITY CONSTRUCTION ENGINEER. SAWCUTS SHOWN ON THE PLAN ARE APPROXIMATE.

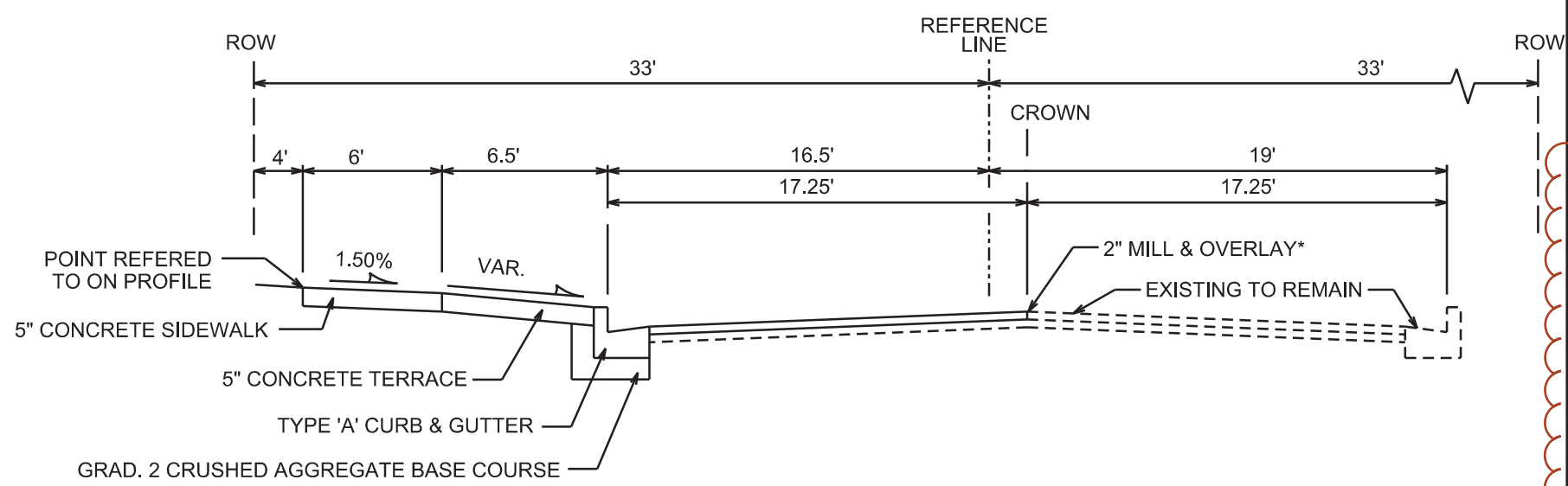
DAMAGE TO ANY EXISTING CURB, PAVEMENT, SIDEWALK, ETC. THAT IS TO REMAIN SHALL BE REPAIRED BY THE DEVELOPER/CONTRACTOR AS DIRECTED BY THE ENGINEER.

PLOT SCALE: _____

PLOT NAME: _____

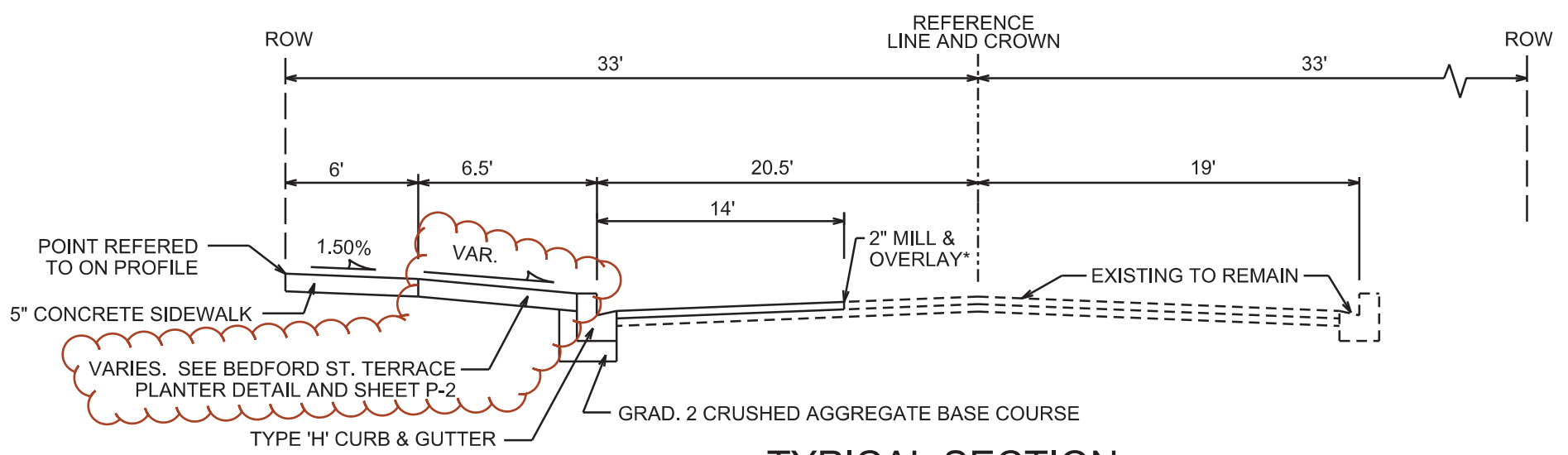
REV. DATE: _____

ORIGINATOR: CITY OF MADISON, STREETS DIVISION



TYPICAL SECTION

W. MIFFLIN ST.
STA 1+70 TO 3+01
NOT TO SCALE



TYPICAL SECTION

N. BEDFORD ST.
STA 20+29 TO 21+86
NOT TO SCALE

NOTES:

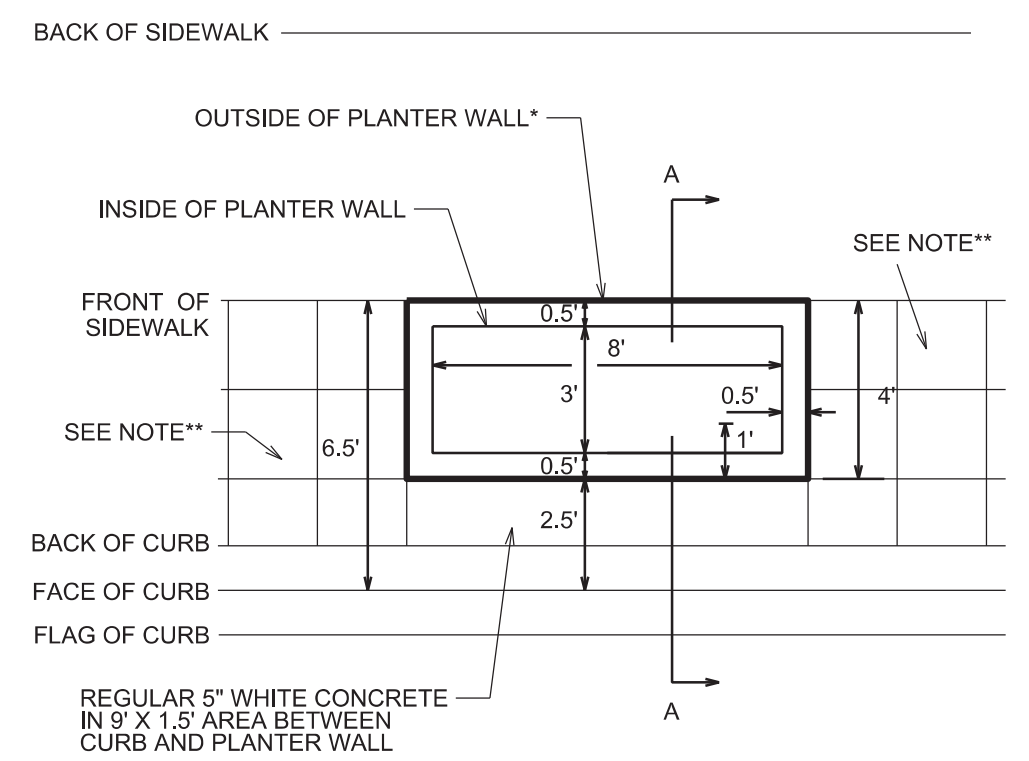
* MILL & OVERLAY LIMITS ARE APPROXIMATE. PATCH PAVEMENT PER CITY'S PATCHING CRITERIA. MILL & OVERLAY MAY NOT BE NECESSARY IF PAVEMENT IS UNDAMAGED, AS DECIDED BY THE CONSTRUCTION ENGINEER. FINAL MILL & OVERLAY LIMITS TO BE DETERMINED BY THE CONSTRUCTION ENGINEER.

** MIFFLIN STREET AND BEDFORD STREET SHALL BE CONSTRUCTED AS TYPE 'C' PAVEMENT PER CITY OF MADISON MINIMUM PAVEMENT DESIGN.

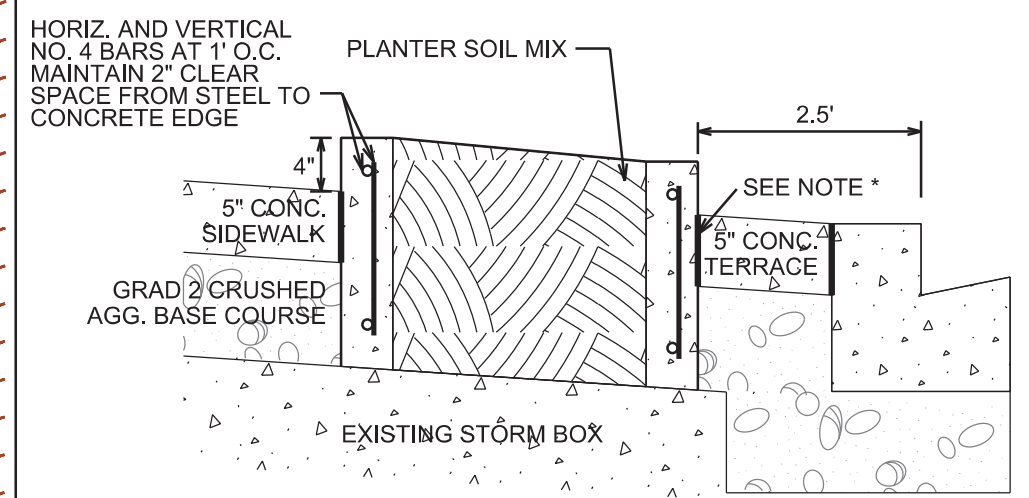
CITY OF MADISON MINIMUM PAVEMENT DESIGN

TYPE	CRUSHED AGG. BASE COURSE		ASPHALTIC CONCRETE PAVEMENT			
	LOWER LAYER GRADATION 1	UPPER LAYER GRADATION 2	TYPE	THICKNESS	TYPE	THICKNESS
A	6"	4"	E-0.3	1.75"	E-0.3	1.75"
B	6"	4"	E-1	2.25"	E-1	2"
C	6"	4"	E-3	3.25"	E-3	2"

BEDFORD ST. TERRACE PLANTER DETAIL



SECTION A-A



NOTES:

*SEPERATE PLANTER WALLS FROM TERRACE AND SIDEWALK WITH 0.5" EXPANSION

**INSTALL 5" COLORED CONCRETE WITH 2'X2' TOOLED JOINT GRID PATTERN BETWEEN PLANTERS. COLOR SHALL BE 'ADOBE' BY DAVIS COLORS. JOINTS SHALL MATCH MAINLINE SIDEWALK JOINTS EVERY 6'. SEE SHEET P-2

PLOT SCALE: _____

PLOT NAME: _____

REV. DATE: _____

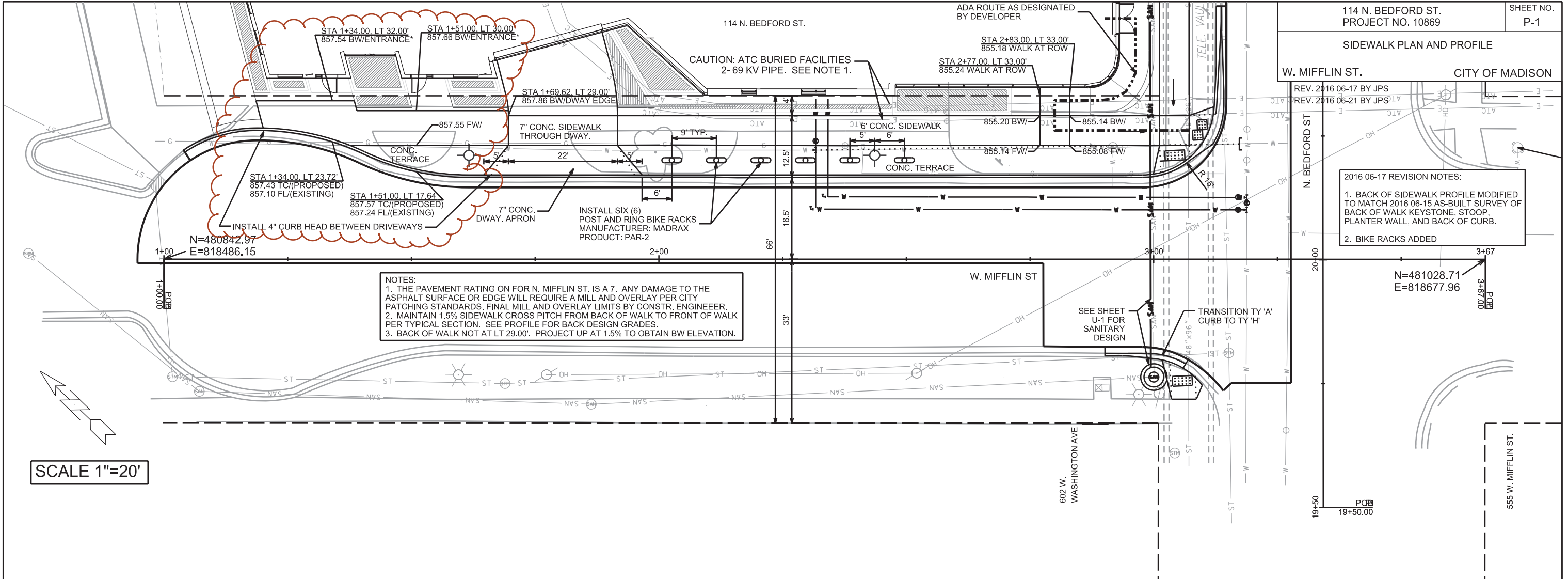
ORIGINATOR: CITY OF MADISON, STREETS DIVISION

SIDEWALK PLAN AND PROFILE

W. MIFFLIN ST. CITY OF MADISON

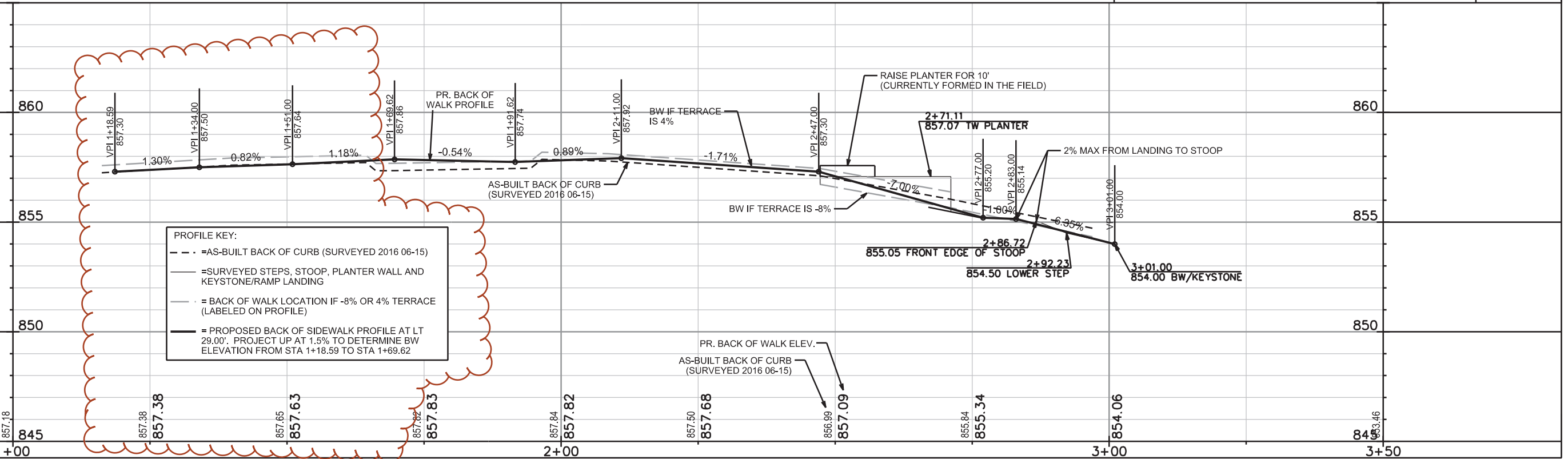
REV. 2016 06-17 BY JPS
REV. 2016 06-21 BY JPS

2016 06-17 REVISION NOTES:
1. BACK OF SIDEWALK PROFILE MODIFIED TO MATCH 2016 06-15 AS-BUILT SURVEY OF BACK OF WALK KEYSTONE, STOOP, PLANTER WALL, AND BACK OF CURB.
2. BIKE RACKS ADDED



NOTES:
1. THE PAVEMENT RATING FOR N. MIFFLIN ST. IS A 7. ANY DAMAGE TO THE ASPHALT SURFACE OR EDGE WILL REQUIRE A MILL AND OVERLAY PER CITY PATCHING STANDARDS. FINAL MILL AND OVERLAY LIMITS BY CONSTR. ENGINEER.
2. MAINTAIN 1.5% SIDEWALK CROSS PITCH FROM BACK OF WALK TO FRONT OF WALK PER TYPICAL SECTION. SEE PROFILE FOR BACK DESIGN GRADES.
3. BACK OF WALK NOT AT LT 29.00'. PROJECT UP AT 1.5% TO OBTAIN BW ELEVATION.

SCALE 1"=20'



PLOT SCALE: _____
PLOT NAME: _____
REV. DATE: _____
ORIGINATOR: CITY OF MADISON, STREETS DIVISION

SIDEWALK PLAN AND PROFILE

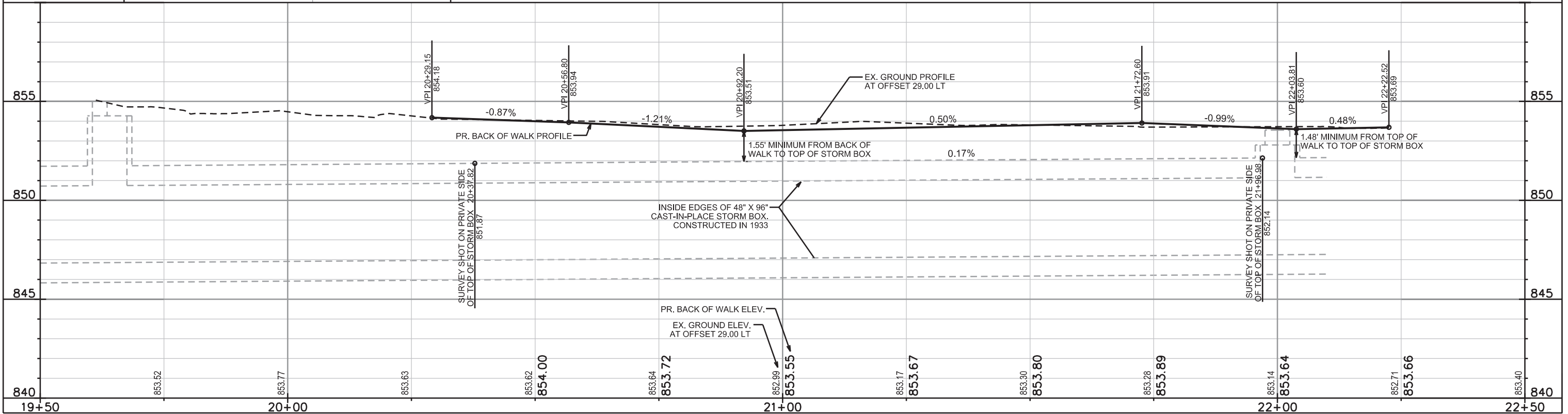
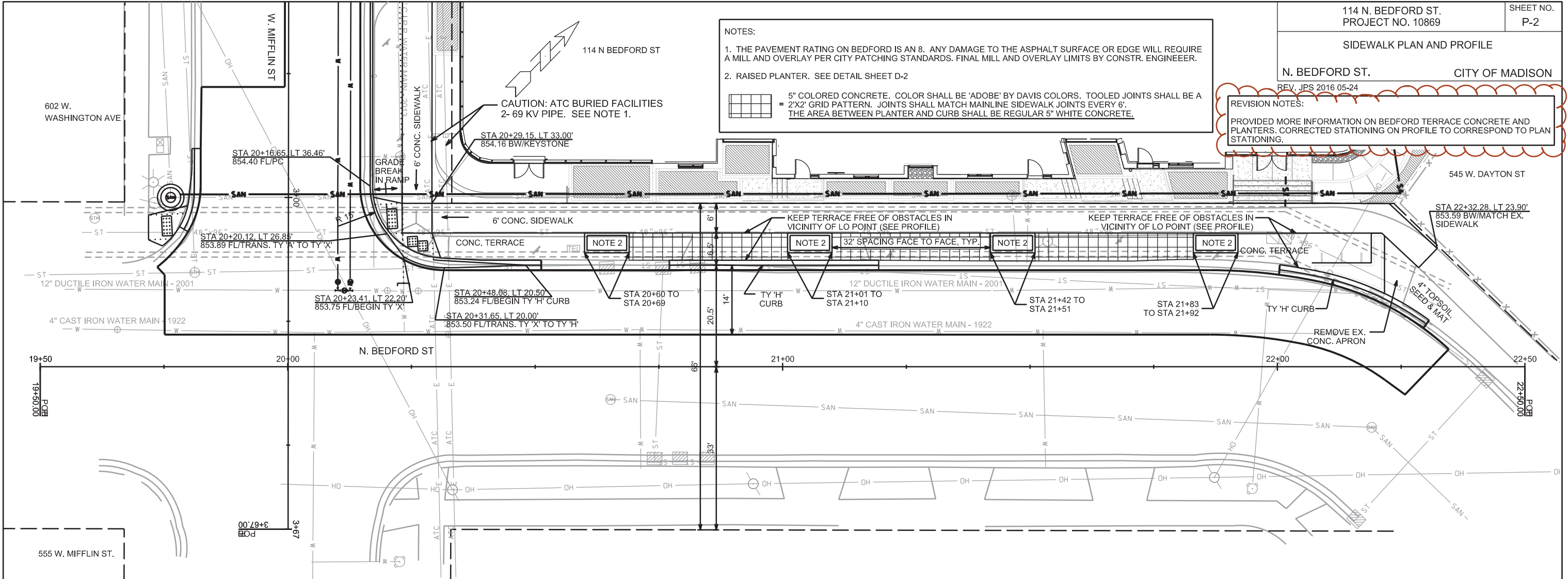
N. BEDFORD ST. CITY OF MADISON

REV. JPS 2016 05-24

REVISION NOTES:
PROVIDED MORE INFORMATION ON BEDFORD TERRACE CONCRETE AND PLANTERS. CORRECTED STATIONING ON PROFILE TO CORRESPOND TO PLAN STATIONING.

- NOTES:
- THE PAVEMENT RATING ON BEDFORD IS AN 8. ANY DAMAGE TO THE ASPHALT SURFACE OR EDGE WILL REQUIRE A MILL AND OVERLAY PER CITY PATCHING STANDARDS. FINAL MILL AND OVERLAY LIMITS BY CONSTR. ENGINEER.
 - RAISED PLANTER. SEE DETAIL SHEET D-2
- 5" COLORED CONCRETE. COLOR SHALL BE 'ADOBE' BY DAVIS COLORS. TOOLED JOINTS SHALL BE A 2'X2' GRID PATTERN. JOINTS SHALL MATCH MAINLINE SIDEWALK JOINTS EVERY 6'. THE AREA BETWEEN PLANTER AND CURB SHALL BE REGULAR 5" WHITE CONCRETE.

CAUTION: ATC BURIED FACILITIES
2- 69 KV PIPE. SEE NOTE 1.



PLOT SCALE: _____

PLOT NAME: _____

REV. DATE: _____

ORIGINATOR: CITY OF MADISON, STREETS DIVISION

This document, together with the concepts and design presented herein, as an instrument of service, is intended only for the specific purpose and client for which it was prepared. Reuse of and improper reliance on this document without written authorization and adaptation by Kimley-Horn and Associates, Inc. may be without liability to Kimley-Horn and Associates, Inc.

REMOVE AND REPLACE 4' DIA. SANITARY MANHOLE S1
 CONTRACTOR TO FIELD VERIFY DEPTH AND LOCATION OF EXISTING SANITARY SEWER. CONTRACTOR TO ADJUST RIM TO PROPOSED FINISHED GRADE.
 CITY SAS #4851-001

PROPOSED 12" SANITARY SEWER SERVICE. SEE MEP PLANS FOR BUILDING CONNECTION.

EXISTING SANITARY SEWER TO BE REMOVED AND REPLACED WITH C900 PVC.

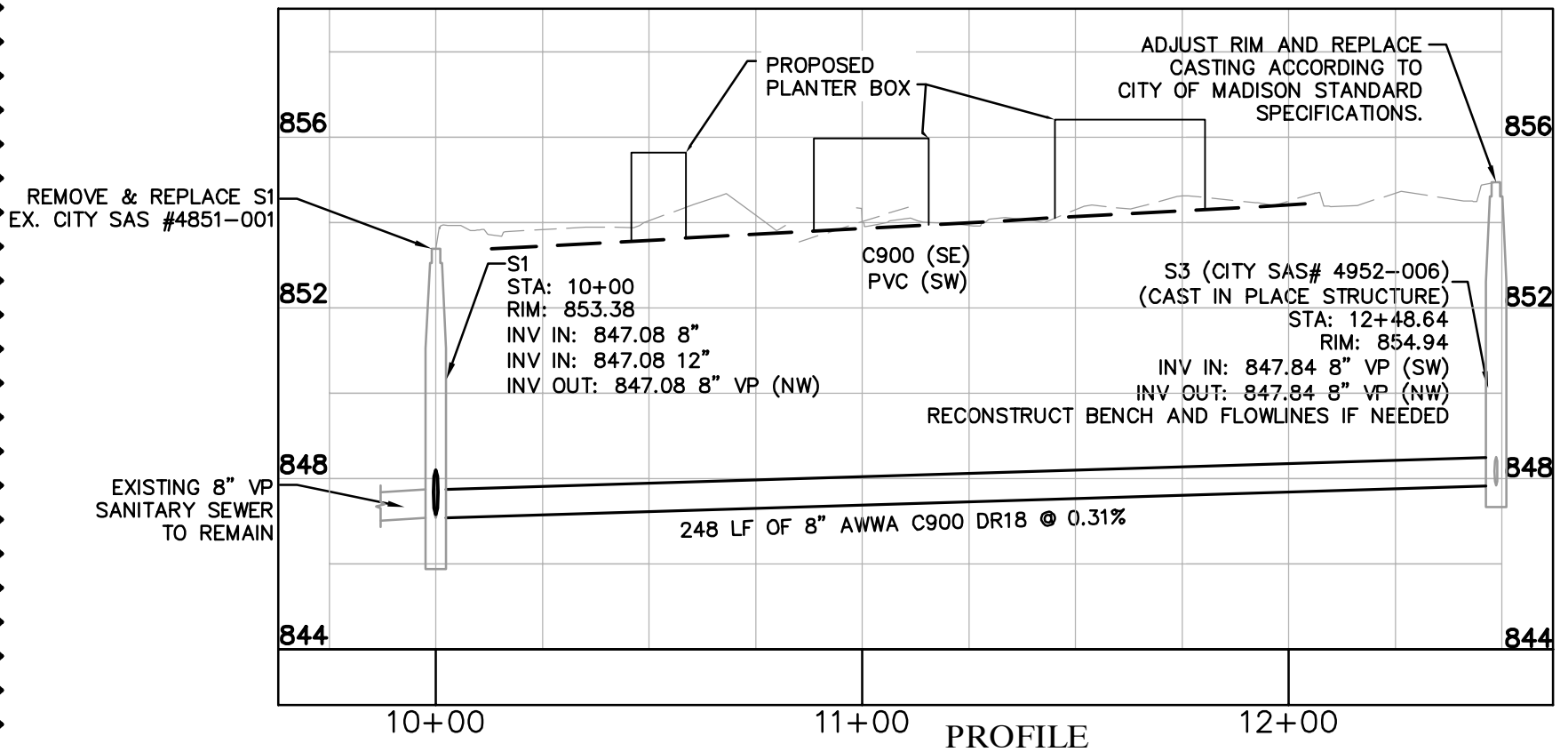
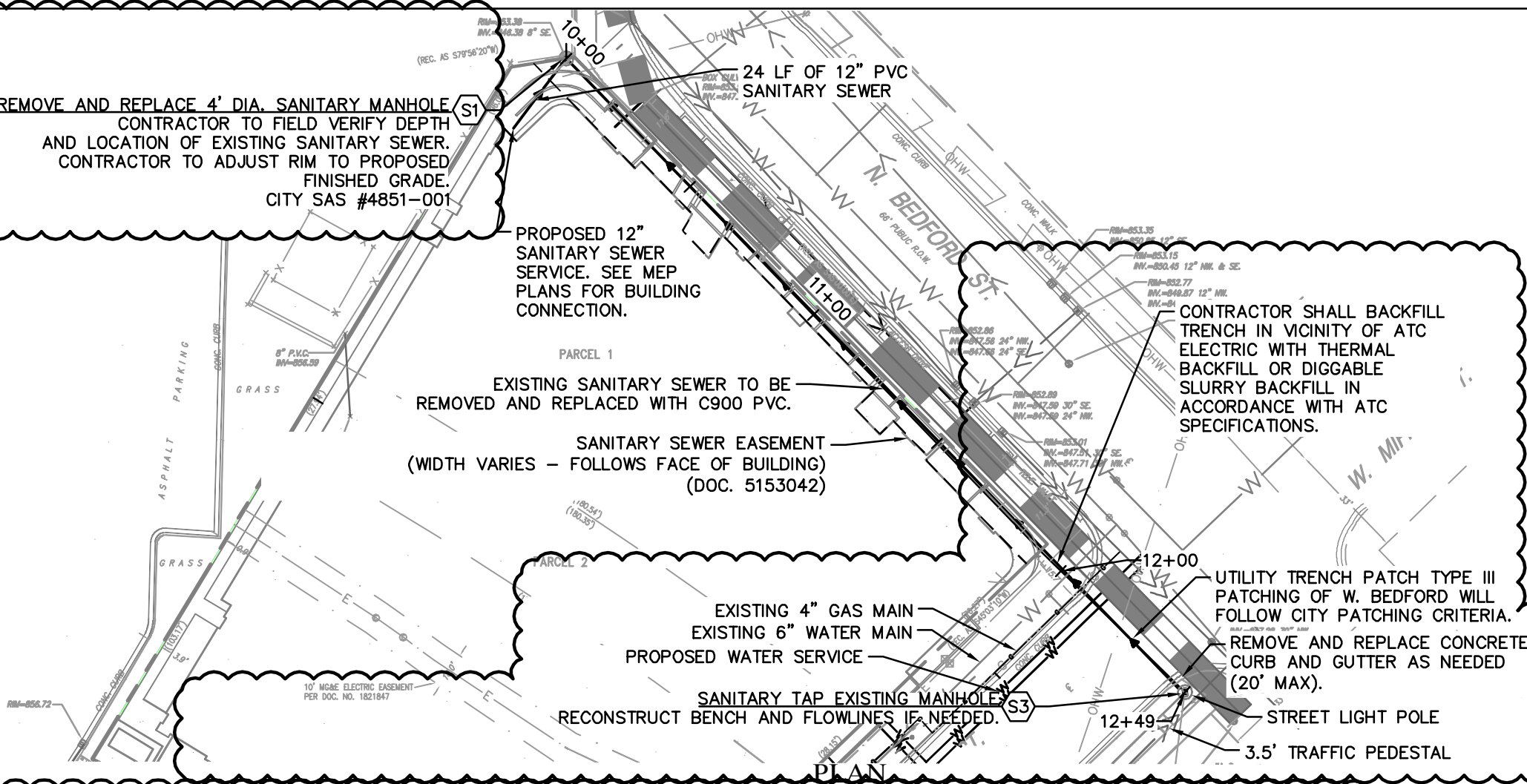
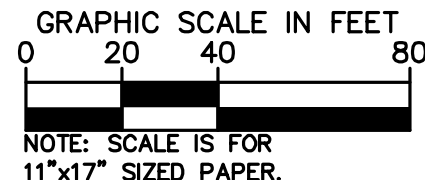
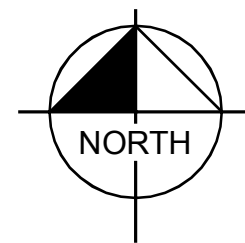
SANITARY SEWER EASEMENT (WIDTH VARIES - FOLLOWS FACE OF BUILDING) (DOC. 5153042)

CONTRACTOR SHALL BACKFILL TRENCH IN VICINITY OF ATC ELECTRIC WITH THERMAL BACKFILL OR DIGGABLE SLURRY BACKFILL IN ACCORDANCE WITH ATC SPECIFICATIONS.

UTILITY TRENCH PATCH TYPE III PATCHING OF W. BEDFORD WILL FOLLOW CITY PATCHING CRITERIA.
 REMOVE AND REPLACE CONCRETE CURB AND GUTTER AS NEEDED (20' MAX).

SANITARY TAP EXISTING MANHOLE S3
 RECONSTRUCT BENCH AND FLOWLINES IF NEEDED.

STREET LIGHT POLE
 3.5' TRAFFIC PEDESTAL



NOTES

GENERAL NOTES

1. REFER TO THE CITY OF MADISON STANDARD DETAIL DRAWINGS:
 - 1.1. SANITARY SEWER PRECAST SAS: STANDARD DETAIL DRAWING 5.7.2
 - 1.2. FLEXIBLE PIPE TO S.A.S. CONNECTOR: STANDARD DETAIL DRAWING 5.7.31
 - 1.3. SAS LOCKING & LOGO COVER: STANDARD DETAIL DRAWING 5.7.16A
 - 1.4. PIPE BEDDING AND BACKFILL: STANDARD DETAIL DRAWING 5.2.1

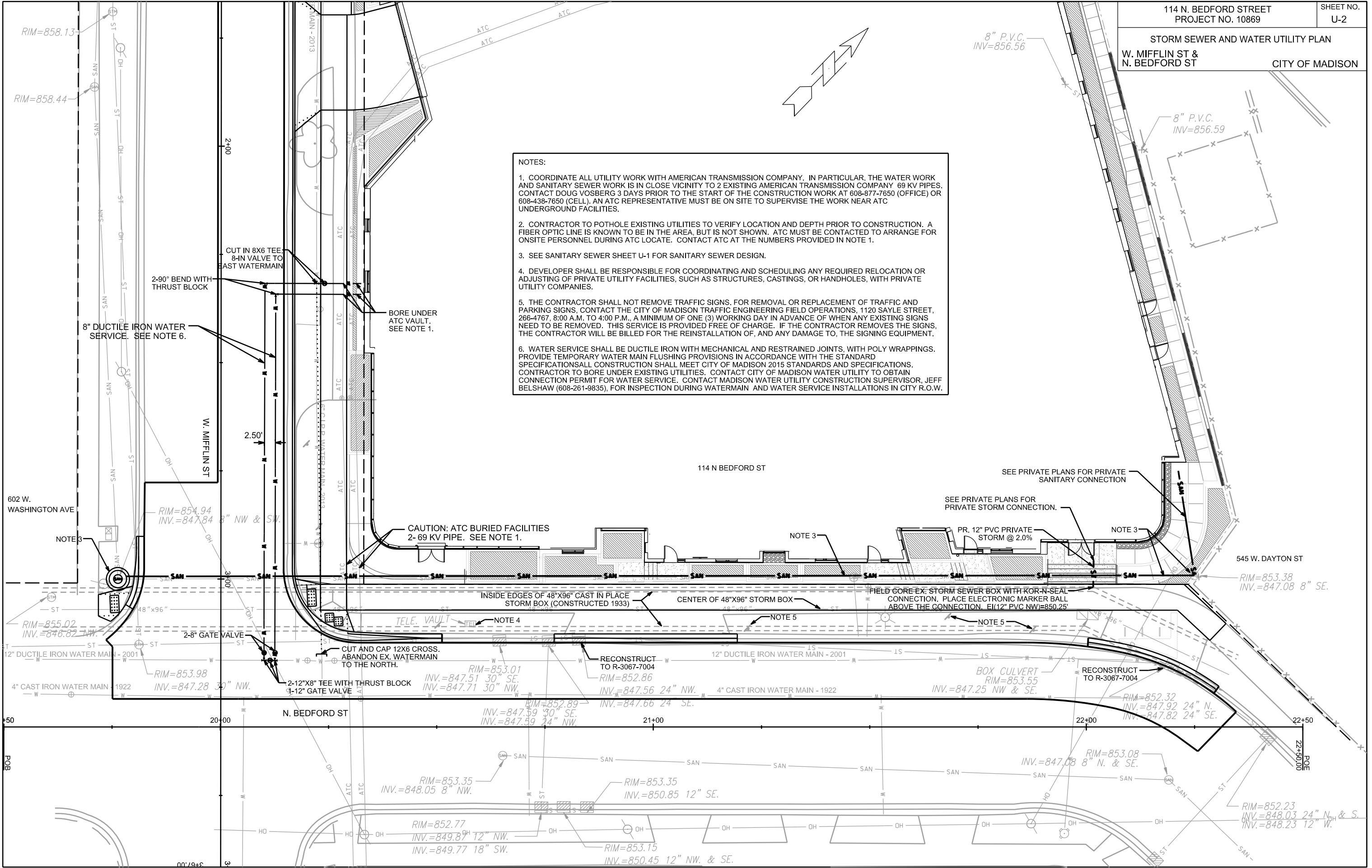


Date of Signature: 07/07/15
 LICENSE EXPIRES 07/31/16

Kimley»Horn	© 2014 KIMLEY-HORN AND ASSOCIATES, INC. 200 SOUTH EXECUTIVE DRIVE, SUITE 101 BROOKFIELD, WI 53005 PHONE: 262-789-6714 WWW.KIMLEY-HORN.COM				
CA VENTURES Student Living Residential Office Hospitality Senior Living	KHA PROJECT: 16829000 DATE: 03/18/15 SCALE: AS SHOWN DESIGNED BY: SEM DRAWN BY: LDS CHECKED BY: SEM				
SANITARY SEWER PLAN AND PROFILE					
MADISON STUDENT HOUSING					
SHEET NUMBER EX-1	REVISIONS	DATE	BY		
	2	07/01/15	LDS		
	1	06/26/15	SEM		

STORM SEWER AND WATER UTILITY PLAN
W. MIFFLIN ST &
N. BEDFORD ST
CITY OF MADISON

- NOTES:
- COORDINATE ALL UTILITY WORK WITH AMERICAN TRANSMISSION COMPANY. IN PARTICULAR, THE WATER WORK AND SANITARY SEWER WORK IS IN CLOSE VICINITY TO 2 EXISTING AMERICAN TRANSMISSION COMPANY 69 KV PIPES. CONTACT DOUG VOSBERG 3 DAYS PRIOR TO THE START OF THE CONSTRUCTION WORK AT 608-877-7650 (OFFICE) OR 608-438-7650 (CELL). AN ATC REPRESENTATIVE MUST BE ON SITE TO SUPERVISE THE WORK NEAR ATC UNDERGROUND FACILITIES.
 - CONTRACTOR TO POT HOLE EXISTING UTILITIES TO VERIFY LOCATION AND DEPTH PRIOR TO CONSTRUCTION. A FIBER OPTIC LINE IS KNOWN TO BE IN THE AREA, BUT IS NOT SHOWN. ATC MUST BE CONTACTED TO ARRANGE FOR ONSITE PERSONNEL DURING ATC LOCATE. CONTACT ATC AT THE NUMBERS PROVIDED IN NOTE 1.
 - SEE SANITARY SEWER SHEET U-1 FOR SANITARY SEWER DESIGN.
 - DEVELOPER SHALL BE RESPONSIBLE FOR COORDINATING AND SCHEDULING ANY REQUIRED RELOCATION OR ADJUSTING OF PRIVATE UTILITY FACILITIES, SUCH AS STRUCTURES, CASTINGS, OR HANDHOLES, WITH PRIVATE UTILITY COMPANIES.
 - THE CONTRACTOR SHALL NOT REMOVE TRAFFIC SIGNS. FOR REMOVAL OR REPLACEMENT OF TRAFFIC AND PARKING SIGNS, CONTACT THE CITY OF MADISON TRAFFIC ENGINEERING FIELD OPERATIONS, 1120 SAYLE STREET, 266-4767, 8:00 A.M. TO 4:00 P.M., A MINIMUM OF ONE (3) WORKING DAY IN ADVANCE OF WHEN ANY EXISTING SIGNS NEED TO BE REMOVED. THIS SERVICE IS PROVIDED FREE OF CHARGE. IF THE CONTRACTOR REMOVES THE SIGNS, THE CONTRACTOR WILL BE BILLED FOR THE REINSTALLATION OF, AND ANY DAMAGE TO, THE SIGNING EQUIPMENT.
 - WATER SERVICE SHALL BE DUCTILE IRON WITH MECHANICAL AND RESTRAINED JOINTS, WITH POLY WRAPPINGS. PROVIDE TEMPORARY WATER MAIN FLUSHING PROVISIONS IN ACCORDANCE WITH THE STANDARD SPECIFICATIONS ALL CONSTRUCTION SHALL MEET CITY OF MADISON 2015 STANDARDS AND SPECIFICATIONS. CONTRACTOR TO BORE UNDER EXISTING UTILITIES. CONTACT CITY OF MADISON WATER UTILITY TO OBTAIN CONNECTION PERMIT FOR WATER SERVICE. CONTACT MADISON WATER UTILITY CONSTRUCTION SUPERVISOR, JEFF BELSHAW (608-261-9835), FOR INSPECTION DURING WATERMAIN AND WATER SERVICE INSTALLATIONS IN CITY R.O.W.



PLOT SCALE: _____

REV. DATE: _____

ORIGINATOR: CITY OF MADISON, STREETS DIVISION

ELECTRICAL PLAN

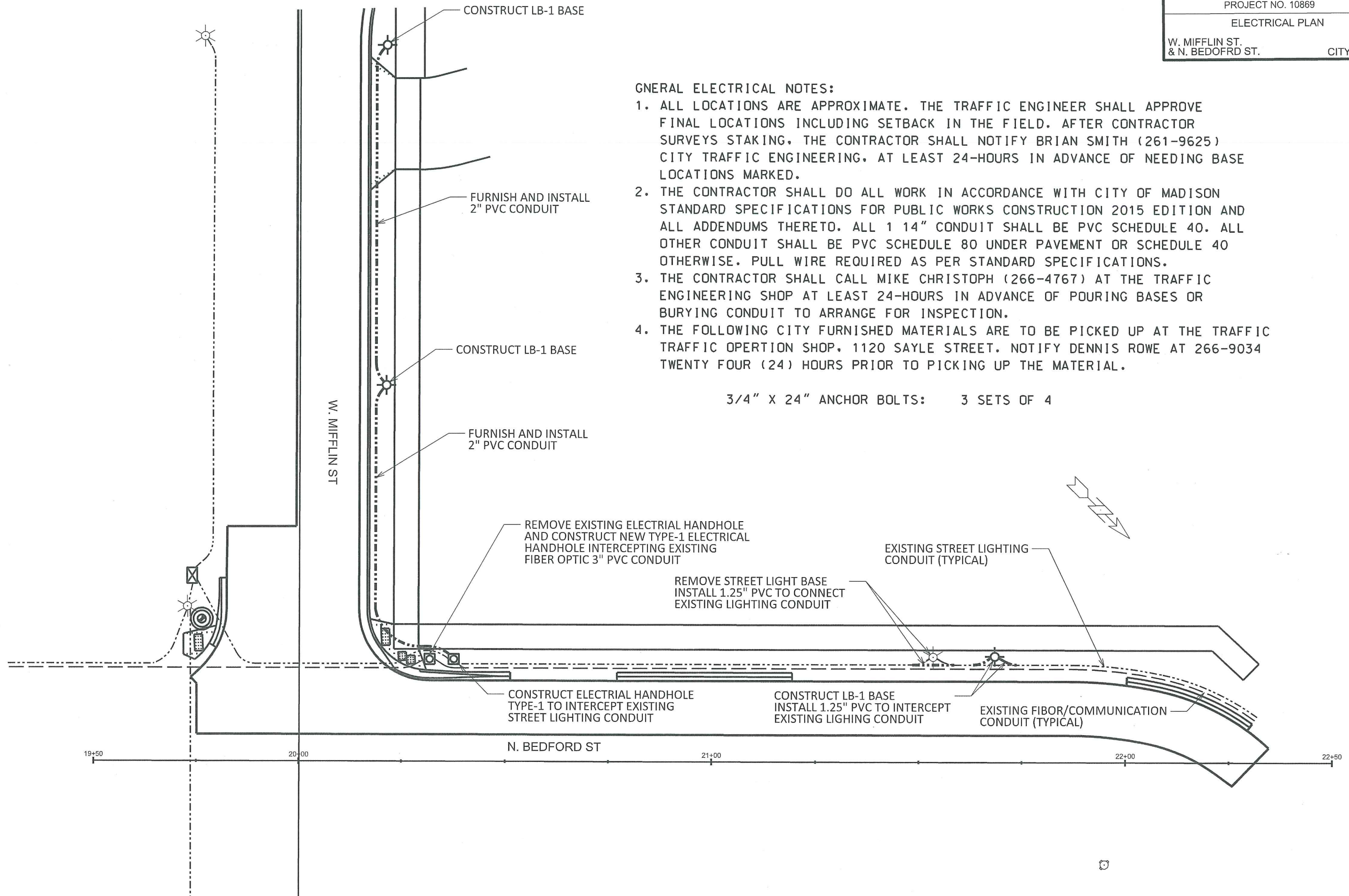
W. MIFFLIN ST.
& N. BEDOFRD ST.

CITY OF MADISON

GENERAL ELECTRICAL NOTES:

1. ALL LOCATIONS ARE APPROXIMATE. THE TRAFFIC ENGINEER SHALL APPROVE FINAL LOCATIONS INCLUDING SETBACK IN THE FIELD. AFTER CONTRACTOR SURVEYS STAKING, THE CONTRACTOR SHALL NOTIFY BRIAN SMITH (261-9625) CITY TRAFFIC ENGINEERING, AT LEAST 24-HOURS IN ADVANCE OF NEEDING BASE LOCATIONS MARKED.
2. THE CONTRACTOR SHALL DO ALL WORK IN ACCORDANCE WITH CITY OF MADISON STANDARD SPECIFICATIONS FOR PUBLIC WORKS CONSTRUCTION 2015 EDITION AND ALL ADDENDUMS THERETO. ALL 1 1/4" CONDUIT SHALL BE PVC SCHEDULE 40. ALL OTHER CONDUIT SHALL BE PVC SCHEDULE 80 UNDER PAVEMENT OR SCHEDULE 40 OTHERWISE. PULL WIRE REQUIRED AS PER STANDARD SPECIFICATIONS.
3. THE CONTRACTOR SHALL CALL MIKE CHRISTOPH (266-4767) AT THE TRAFFIC ENGINEERING SHOP AT LEAST 24-HOURS IN ADVANCE OF POURING BASES OR BURYING CONDUIT TO ARRANGE FOR INSPECTION.
4. THE FOLLOWING CITY FURNISHED MATERIALS ARE TO BE PICKED UP AT THE TRAFFIC TRAFFIC OPERATION SHOP, 1120 SAYLE STREET. NOTIFY DENNIS ROWE AT 266-9034 TWENTY FOUR (24) HOURS PRIOR TO PICKING UP THE MATERIAL.

3/4" X 24" ANCHOR BOLTS: 3 SETS OF 4



PLOT SCALE:

PLOT NAME:

REV. DATE:

ORIGINATOR: CITY OF MADISON, TRAFFIC ENG. DIV.