



Department of Public Works  
**Engineering Division**  
James M. Wolfe, P.E., City Engineer

City-County Building, Room 115  
210 Martin Luther King, Jr. Boulevard  
Madison, Wisconsin 53703  
Phone: (608) 266-4751  
Fax: (608) 264-9275  
[engineering@cityofmadison.com](mailto:engineering@cityofmadison.com)  
[www.cityofmadison.com/engineering](http://www.cityofmadison.com/engineering)

**Assistant City Engineer**  
Bryan Cooper, AIA  
Gregory T. Fries, P.E.  
Chris Petykowski, P.E.  
**Deputy Division Manager**  
Kathleen M. Cryan  
**Principal Engineer 2**  
John S. Fahrney, P.E.  
Janet Schmidt, P.E.  
**Principal Engineer 1**  
Mark D. Moder, P.E.  
Andrew J. Zwieg, P.E.  
**Financial Manager**  
Steven B. Danner-Rivers

Parcel Number: «Parcel»  
Situs Address: «SitusAddress»  
«MailingName1»  
«MailingName2»  
«MailingAddress»  
«MailingCityStZip»

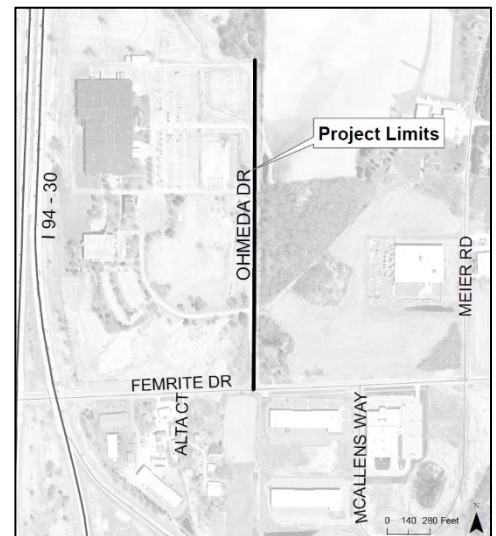
January 23, 2024

**To: Property Owners along Ohmeda Drive**  
**Re: Proposed Street Reconstruction Project & Public Hearing**

The City of Madison is planning a 2024 project on Ohmeda Drive in the Yahara Hills Neighborhood. Enclosed with this letter is a fact sheet with some details on the proposed project. Also enclosed is a notification for the Public Hearing before the Board of Public Works. The date, time and location of the public hearing is on the notification.

This project will involve special assessments to the owners of property adjacent to the project. The property owners will be assessed for various items included with this proposed project, and the costs of some of those items are assessed entirely to the owner. Tables detailing the City's standard assessment policy for the items of work is included on the fact sheet.

Enclosed is revision #2 of the Schedule of Assessments, which shows the estimated costs for your property adjacent to the project. The design of the sanitary sewer, water main, storm sewer, driveways, and sidewalk have changed since revision #1 of the assessments was created after the assessments were adopted (RES-23-00133) on February 8, 2023 and the original assessments adopted (RES-22-00773) on November 11, 2022 by the City of Madison Common Council. The design changes reapportioned the costs of infrastructure to properties listed on the schedule. The Revised Schedule of Assessments for all properties adjacent to the project is available on the project webpage at: <https://www.cityofmadison.com/engineering/projects/ohmeda-drive-reconstruction>, a hard copy can be mailed to you upon request. The frontages and lot areas of each property to be assessed are listed on the full schedule. After work is complete, a final assessment cost will be calculated based on bid prices and work actually performed. The final assessment cost, which will be billed after the completion of the project, is payable in one lump sum or over a period of 8 years, with the 5% interest charged on the unpaid balance.



To request accommodations for special needs or disabilities or if you have any other questions regarding this project, please contact Andrew Zwieg, Project Manager, (608) 266-9219, [azwieg@cityofmadison.com](mailto:azwieg@cityofmadison.com). This includes requests relating to the Public Hearing and operations of construction.

Sincerely,

James M. Wolfe, P.E., City Engineer

JMW:ajz  
Cc by email:

Jael Currie, District 16 Alder  
Mark Moder, City Engineering  
Daniel Olivares, City Engineering  
Ryan Newman, Water Utility  
Gretchen Aviles-Pineiro, City Traffic Engineering  
Yang Tao, Traffic Engineering  
Charles Romines, Streets Division  
Tim Sobota, Madison Metro Transit  
Bill Sullivan, Fire Department  
Jennifer Hannah, Police Department  
Kenneth Thomas [krthomas1@madison.k12.wi.us](mailto:krthomas1@madison.k12.wi.us)  
Cara Hanson [cmhanson@madison.k12.wi.us](mailto:cmhanson@madison.k12.wi.us)  
Mike MacDonald [mmacdonald@madison.k12.wi.us](mailto:mmacdonald@madison.k12.wi.us)

Andrew Zweg, City Engineering  
Janet Schmidt, City Engineering  
Adam Wiederhoeft, Water Utility  
Sean Malloy, City Traffic Engineering  
Rebecca Qureishi, City Traffic Engineering  
Lorissa Banuelos, Common Council  
Aaron Leair, City Forestry  
Hannah Mohelnitzky, City Engineering  
Dane County 911  
Cedric Hodo [cdhodo@madison.k12.wi.us](mailto:cdhodo@madison.k12.wi.us)  
Vanessa Cruz [vacruz@madison.k12.wi.us](mailto:vacruz@madison.k12.wi.us)  
Amanda Nagel [ajnagel@madison.k12.wi.us](mailto:ajnagel@madison.k12.wi.us)  
Svetlin Borisov [sbborisov@madison.k12.wi.us](mailto:sbborisov@madison.k12.wi.us)

**NOTICE OF PUBLIC HEARING  
BEFORE THE BOARD OF PUBLIC WORKS  
FOR  
PLANS, SPECIFICATIONS, AND SPECIAL ASSESSMENTS  
FOR  
PUBLIC WORKS IMPROVEMENTS  
MADISON, WISCONSIN**

**PART I**

The Common Council of the City of Madison, Wisconsin, having heretofore decided that it is expedient and necessary that the improvements as listed in Part II hereof be improved at the expense of the property thereby on which would be conferred some special benefit.

NOW, THEREFORE, NOTICE IS HEREBY GIVEN:

That the City Engineer has prepared plans, specifications, a proposed schedule of assessments, and an estimate of the entire costs of the improvement for each of the districts listed in Part II hereof, and;

That the plans, specifications, a proposed schedule of assessments, and an estimate of the entire cost of the improvements listed hereto are available and open to inspection by all interested persons in the office of the City Engineer, Room 115, City-County Building, 210 Martin Luther King Jr. Blvd. and will so continue to be for ten (10) working days from the first published date of this notice, (please email Board of Public Works, [boardofpublicworks@cityofmadison.com](mailto:boardofpublicworks@cityofmadison.com)) and;

That on **WEDNESDAY, FEBRUARY 7, 2024 AT 5:30 P.M.**, the Board of Public Works will be held remotely and the public can attend using a laptop or call in by phone. If you would like instruction on how to participate, please email [boardofpublicworks@cityofmadison.com](mailto:boardofpublicworks@cityofmadison.com) The Board will consider any objections that may be filed in writing or in person and hear all persons desiring to be heard, and;

**That special assessments may be paid over an eight (8) year period, with the owner paying 1/8 of the principal each year plus five (5%) percent interest on the unpaid balance, as determined by the Board of Public Works.**

That if the total assessment is paid in full before October 31st in the year that the billing is made, irrespective of project completion, then no interest shall be charged.

If you require an interpreter, materials in alternate formats, or other accommodations to access this public hearing, please contact the Engineering Division at phone (608) 266-4751 or email us at [engineering@cityofmadison.com](mailto:engineering@cityofmadison.com). Please make contact at least 72 hours prior to the date of this public hearing so that we can make proper accommodations.

**PART II**

**OHMEDA DRIVE ASSESSMENT DISTRICT - 2022**

By Order of the Board of Public Works  
Madison, Wisconsin

PUB: WSJ **January 26, 2024**