



IMAGINATION CENTER AT REINDAHL PARK

DESIGN DEVELOPMENT DOCUMENT

NOVEMBER 6, 2023

MADISON PUBLIC LIBRARY

PARKS DIVISION

CITY OF MADISON
ENGINEERING

INFORMATION
TECHNOLOGY
DEPARTMENT



JLA
ARCHITECTS



GRāEF



Thornton Tomasetti



IMAGINATION CENTER AT REINDAHL PARK

DESIGN DEVELOPMENT DOCUMENT

NOVEMBER 6, 2023

LIST OF PANELISTS:

CITY OF MADISON ENGINEERING

BRENT PAUBA

HANNAH MOHELNITZKY

CITY OF MADISON PARKS DIVISION

CJ RYAN

MADISON PUBLIC LIBRARY

GREGORY MICKELLS

TANA ELIAS

JLA ARCHITECTS

JENNIFER CAMP

RAFEEQ ASAD

GARETT TOMESH



JLA
ARCHITECTS



GRāEF



Thornton Tomasetti

Meeting Technical Housekeeping

- This meeting will be **recorded** and posted to the project page.
- All attendees should be **muted** to keep background noise to a minimum.
- Use the **“chat”** button for technical issues with meeting to troubleshoot with staff to assist.
- Use the **“Q and A”** button to type questions about presentation. Questions will be answered live after the presentation.
- Inappropriate questions may be dismissed.
- Use the **“raise your hand”** button to verbally ask your question. You will be prompted to unmute when it is your turn.



This meeting is being recorded.

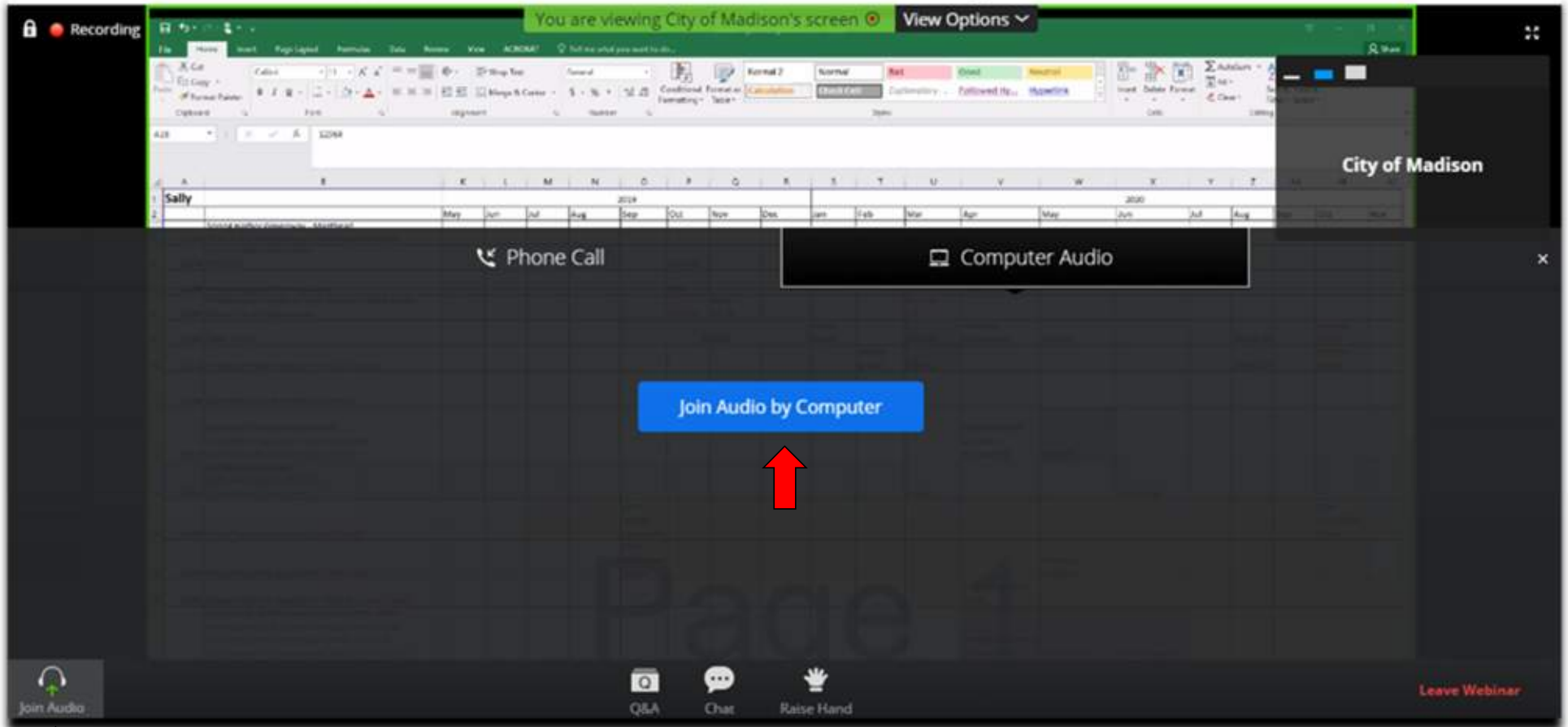
It is a public record subject to disclosure.

By continuing to be in the meeting, you are consenting to being recorded and consenting to this record being released to public record requestors.

CITY OF **MADISON**



How to Participate

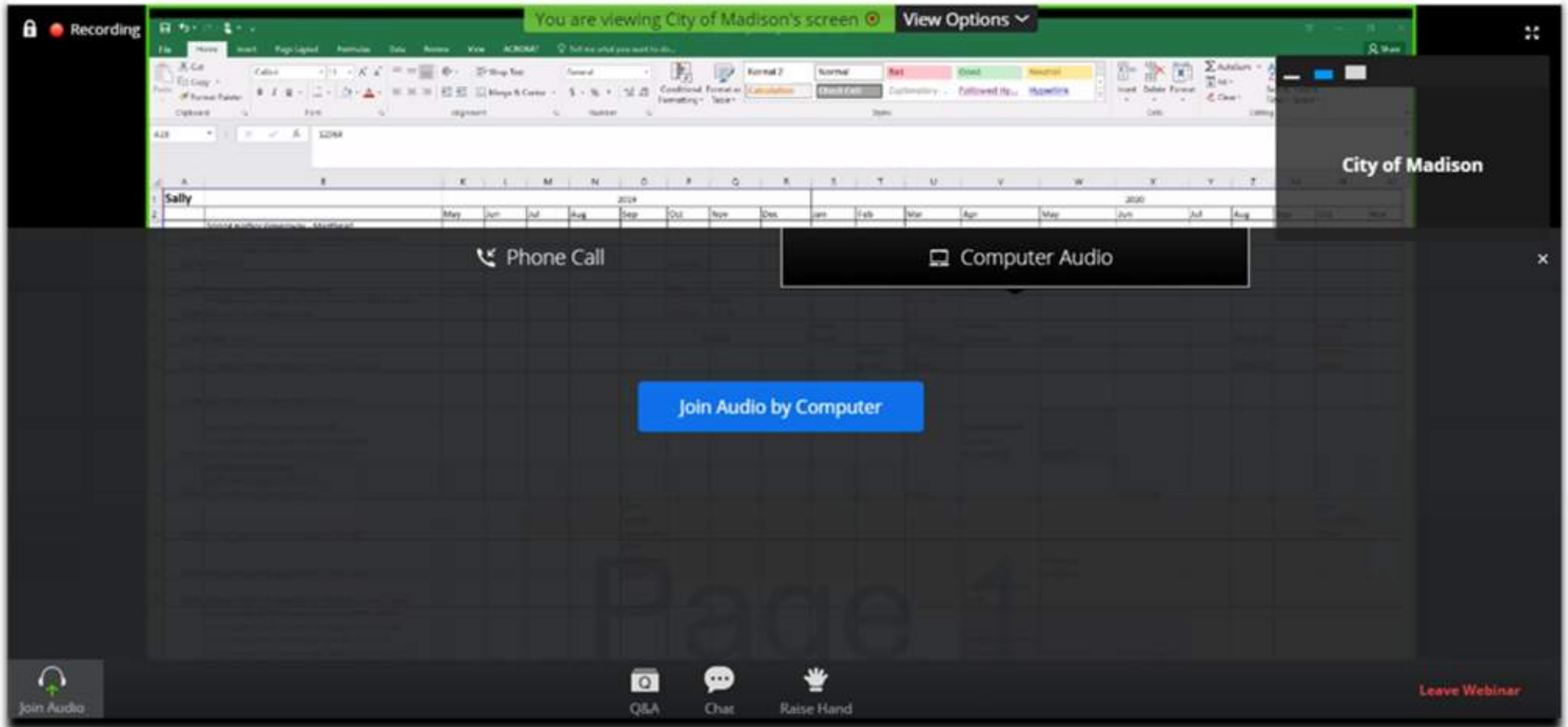


Make sure to join audio

CITY OF MADISON



How to Participate



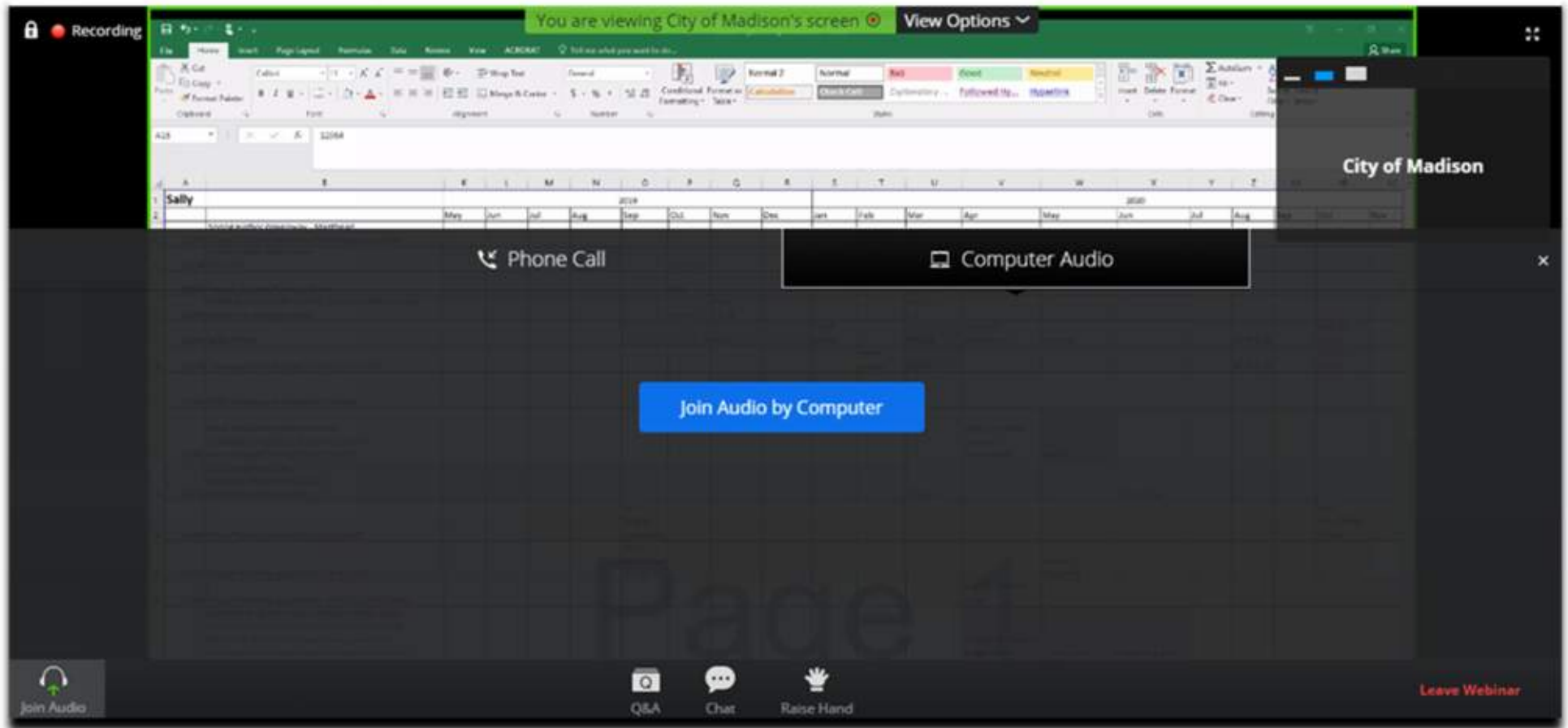
Raise your hand to be unmuted
For comments or ask additional questions.



CITY OF MADISON



How to Participate



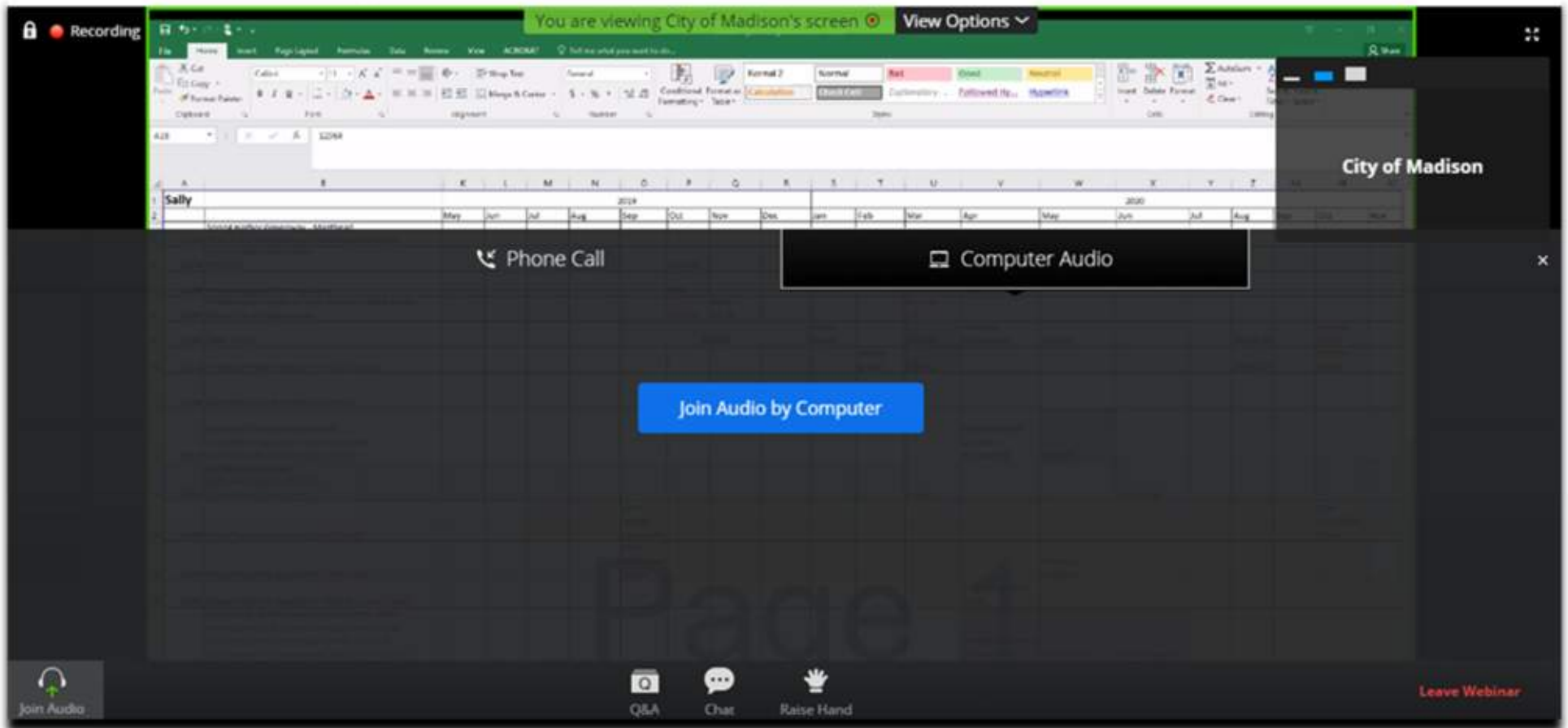
Use chat if you have technical issues or a question for the panelists



CITY OF MADISON



How to Participate



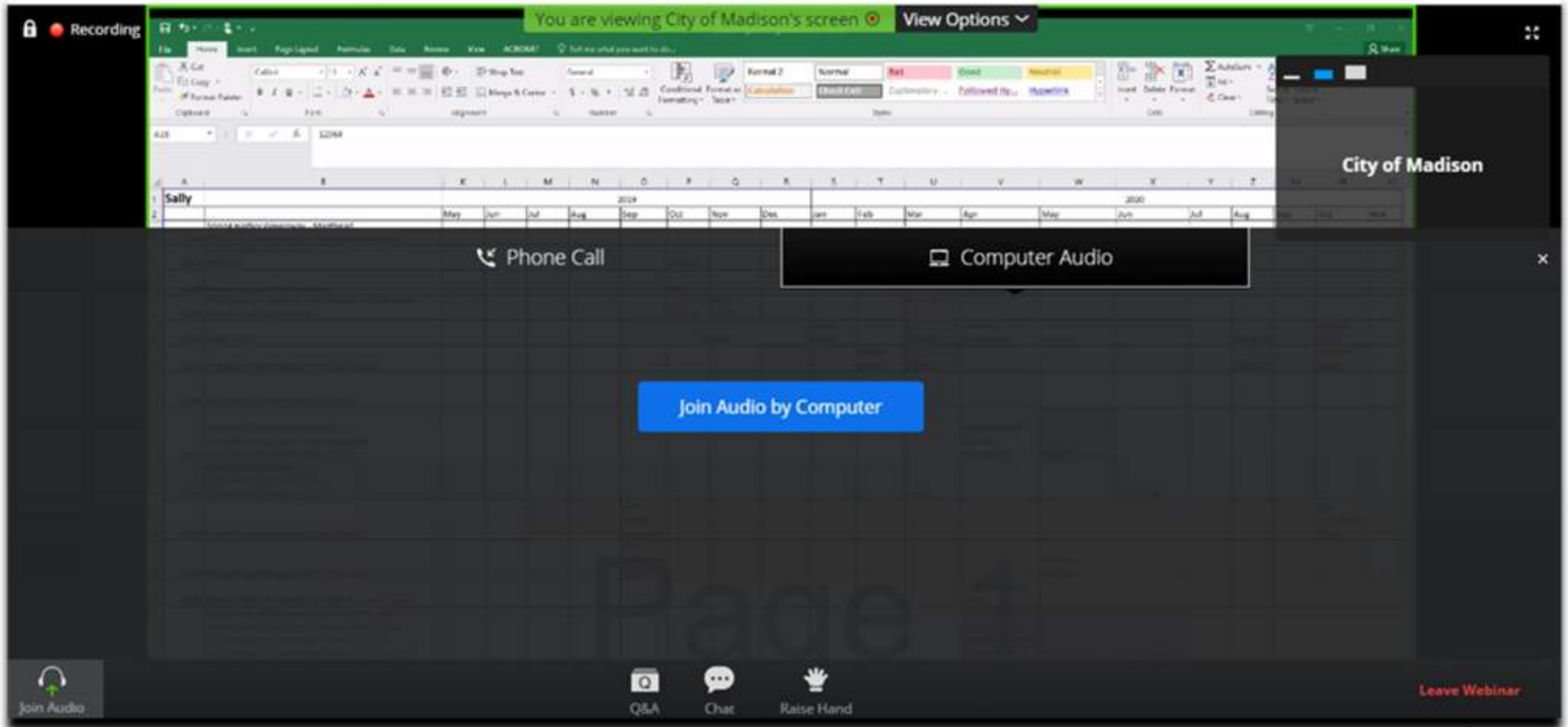
Use Q/A if you have questions.
We will answer after the presentation



CITY OF MADISON



How to Participate



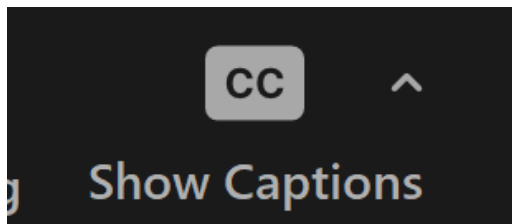
To leave the meeting
click here

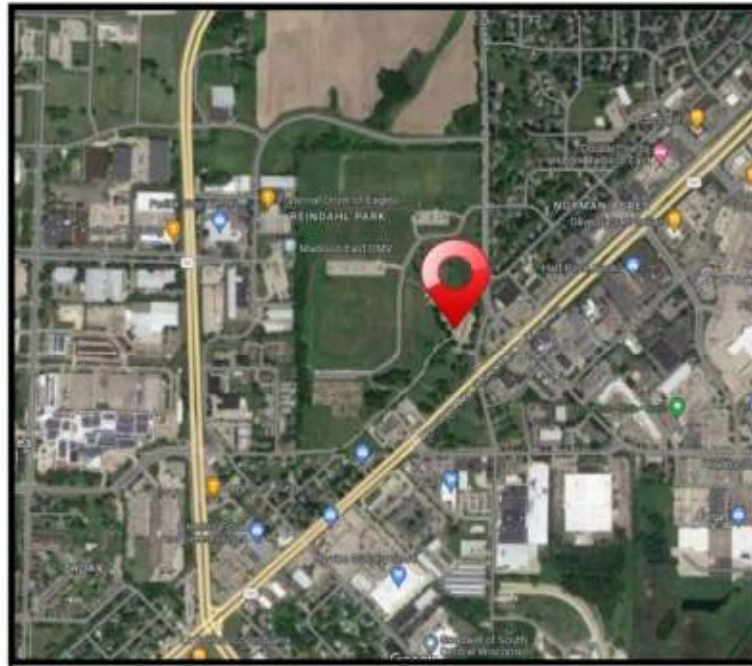
CITY OF MADISON



Closed Captioning

- If you'd like to enable closed captioning, click “show closed captions” button on the bottom of the screen.
- This may already be enabled. If this is not enabled, click the button to allow closed captioning.





JLA
ARCHITECTS
MADISON | MILWAUKEE | DENVER
JLA-AP.COM

JLA PROJECT NUMBER: 30-0928



MADISON
PUBLIC
LIBRARY

play
MADISON
PARKS

**IMAGINATION CENTER
AT REINDAHL PARK**

SCHEMATIC DESIGN

PROGRESS DOCUMENTS

These documents reflect progress and effort and may be subject to change, including additional input. These are not final construction documents and should not be used for final bidding or construction related purposes.

DATE OF ISSUANCE: SEPTEMBER 18, 2023

REVISION SCHEDULE

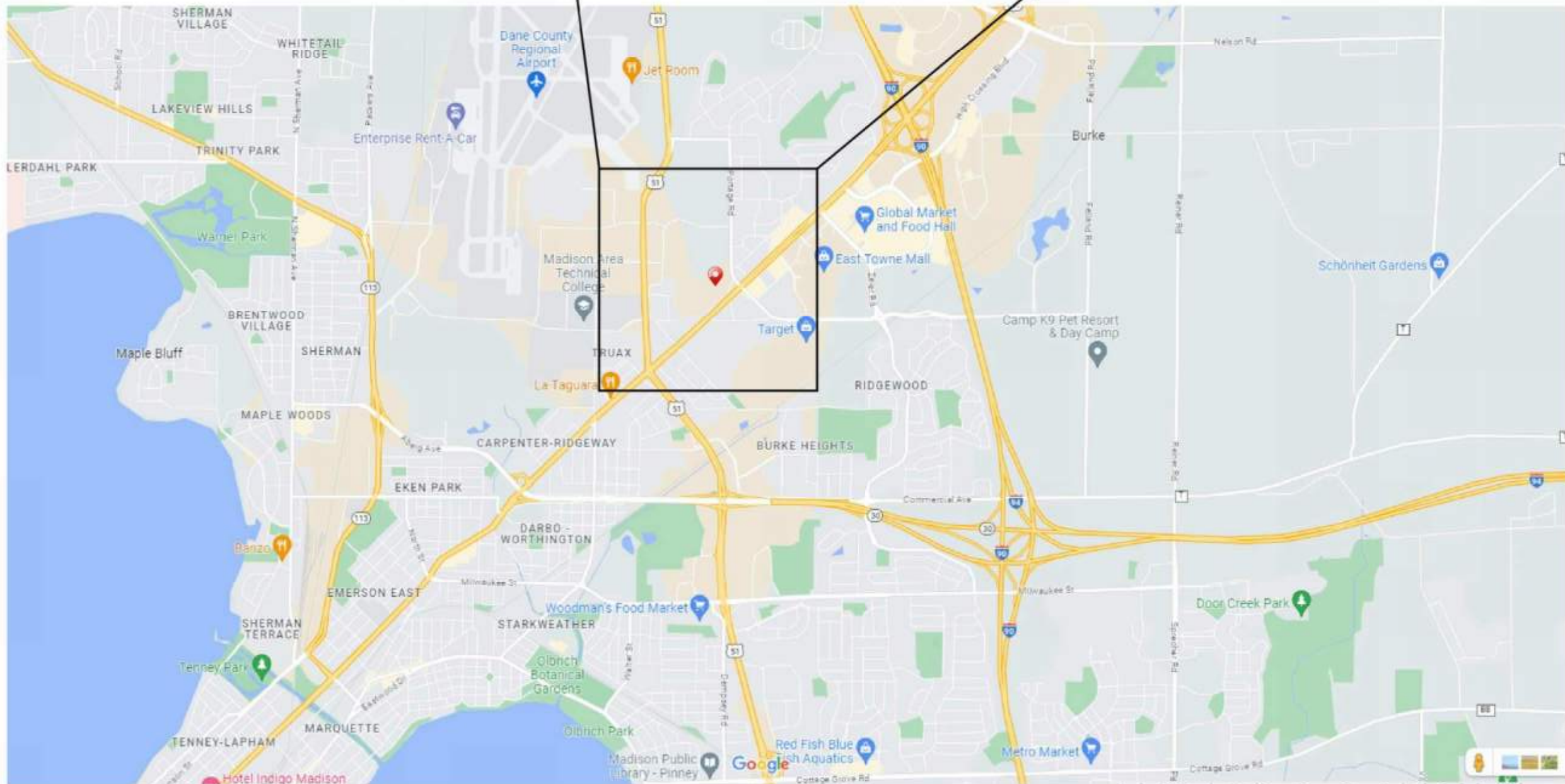
Drawn	Description	Date

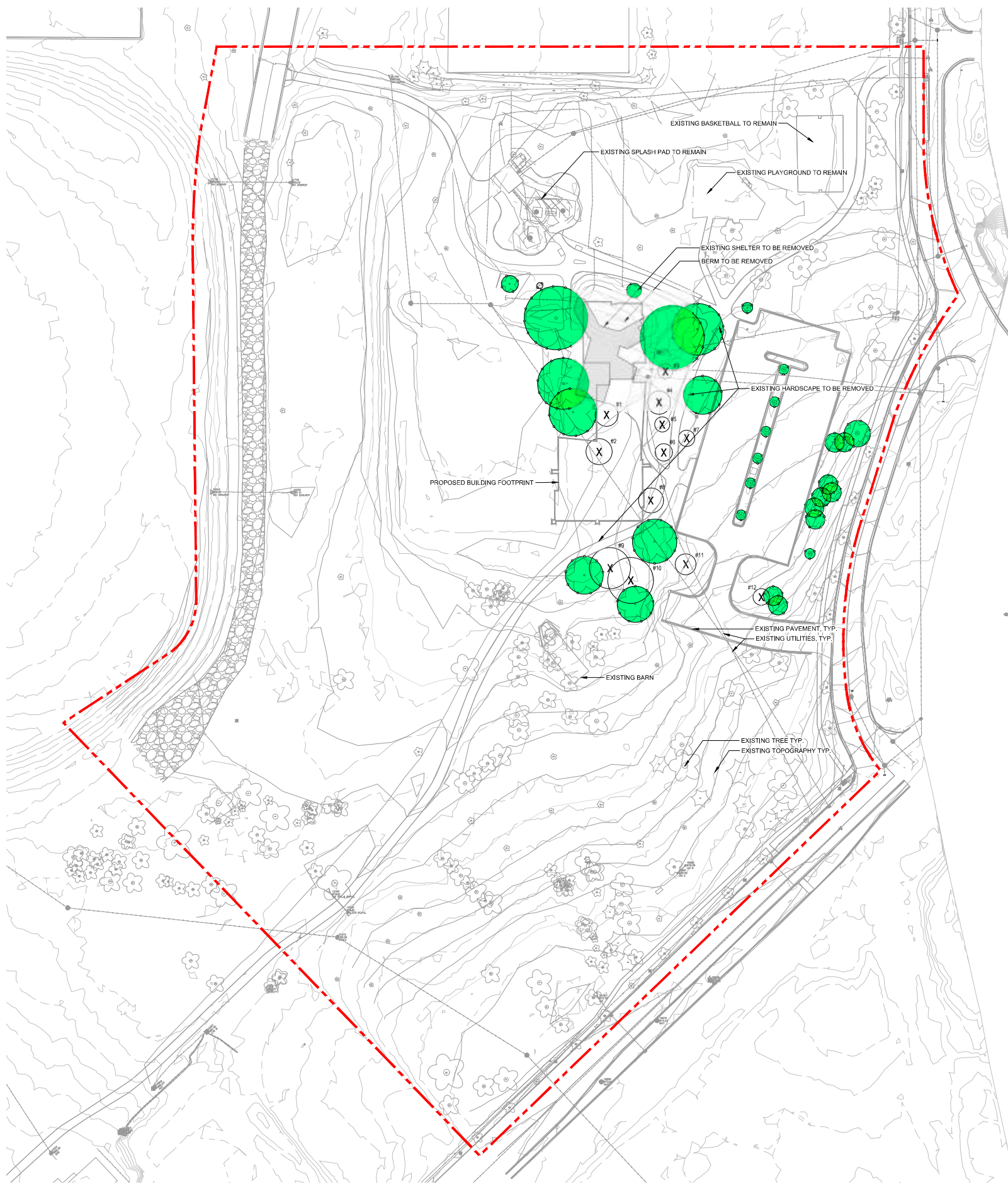
SHEET TITLE

LOCATOR
MAP

SHEET NUMBER

G001

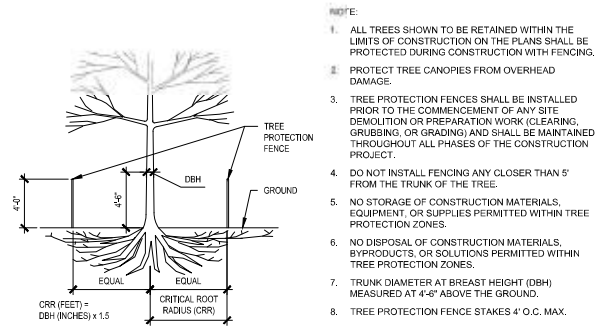




- X TREE TO BE REMOVED
- TREE TO BE PROTECTED

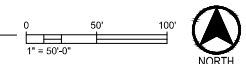
NOTE: SEE CIVIL DEMOLITION AND EROSION CONTROL PLAN FOR MORE SITE DEMOLITION INFORMATION

#	Species	Caliper
1	Basswood	24"
2	Basswood	30"
3	Crabapple	12"
4	Basswood	26"
5	Chestnut	13"
6	Chestnut	16"
7	Chestnut	14"
8	Honeylocust	28"
9	Hackberry	19"
10	Hackberry	18"
11	Honeylocust	22"
12	Red Pine	8"



2 Tree Protection Fencing Detail
SCALE: NTS

1 Tree Protection and Removals
SCALE: 1"=50'-0"



JLA PROJECT NUMBER: 20-0926



IMAGINATION CENTER
AT REINDAHL PARK

SCHEMATIC DESIGN

PROGRESS DOCUMENTS

These documents reflect progress and intent and may be subject to change, including additional detail. These are not final construction documents and should not be used for final bidding or construction-related purposes.

DATE OF ISSUANCE: MARCH 22, 2023

REVISION SCHEDULE

Mark	Description	Date

SHEET TITLE

TREE PROTECTION AND REMOVALS

SHEET NUMBER

L101



JLA
ARCHITECTS
MADISON | MILWAUKEE | DENVER
JLA-AP.COM



JLA PROJECT NUMBER: 20-0926



MADISON
PUBLIC
LIBRARY

play
**MADISON
PARKS**

**IMAGINATION CENTER
AT REINDAHL PARK**

SCHEMATIC DESIGN

PROGRESS DOCUMENTS

These documents reflect progress and intent and may be subject to change, including additional detail. These are not final construction documents and should not be used for final bidding or construction-related purposes.

DATE OF ISSUANCE: MARCH 22, 2023

REVISION SCHEDULE		
NO.	DESCRIPTION	DATE

SHEET TITLE:
**SITE
RENDERING**

SHEET NUMBER:

L402



LEGEND

- PLANTING BED
- LAWN
- NATIVE SEED MIX
- STORMWATER MANAGEMENT AREA
- STANDARD CONCRETE
- HEAVY DUTY CONCRETE
- DECORATIVE CONCRETE
- NEW ASPHALT
- GRAVEL PATH
- METAL BED EDGING
- SPADED BED EDGING
- STONE MAINTENANCE EDGE
- PRECAST CONCRETE BENCH
- POTENTIAL ART LOCATION
- PICNIC TABLE
- ROUND TABLE AND CHAIRS
- BISTRO TABLE
- BBQ GRILL
- TRASH / RECYCLING RECEPTACLE
- EXISTING EVERGREEN TREE
- EXISTING DECIDUOUS TREE
- PROPOSED EVERGREEN TREE
- PROPOSED ORNAMENTAL TREE
- PROPOSED SHADE TREE

1 Site Rendering
SCALE: 1" = 30'-0"





JLA
ARCHITECTS
MADISON | MILWAUKEE | DENVER
JLA-AP.COM



JLA PROJECT NUMBER: 20-0926



MADISON
PUBLIC
LIBRARY

play
MADISON
PARKS

IMAGINATION CENTER
AT REINDAHL PARK

SCHEMATIC DESIGN

PROGRESS DOCUMENTS

These documents reflect progress and intent and may be subject to change, including additional detail. These are not final construction documents and should not be used for final bidding or construction-related purposes.

DATE OF ISSUANCE: MARCH 22, 2023

REVISION SCHEDULE		
NO.	DESCRIPTION	DATE

SHEET TITLE:
SITE
RENDERING

SHEET NUMBER:

L402



LEGEND

- PLANTING BED
- LAWN
- NATIVE SEED MIX
- STORMWATER MANAGEMENT AREA
- STANDARD CONCRETE
- HEAVY DUTY CONCRETE
- DECORATIVE CONCRETE
- NEW ASPHALT
- GRAVEL PATH
- METAL BED EDGING
- SPADED BED EDGING
- STONE MAINTENANCE EDGE
- PRECAST CONCRETE BENCH
- POTENTIAL ART LOCATION
- PICNIC TABLE
- ROUND TABLE AND CHAIRS
- BISTRO TABLE
- BBQ GRILL
- TRASH / RECYCLING RECEPTACLE
- EXISTING EVERGREEN TREE
- EXISTING DECIDUOUS TREE
- PROPOSED EVERGREEN TREE
- PROPOSED ORNAMENTAL TREE
- PROPOSED SHADE TREE

← MAIN ENTRY
← SECONDARY EXITS
← BIKE PARKING



JLA
ARCHITECTS
MADISON | MILWAUKEE | DENVER
JLA-AP.COM

JLA PROJECT NUMBER: 20-0928



MADISON
PUBLIC
LIBRARY

play
MADISON
PARKS

IMAGINATION CENTER
AT REINDAHL PARK

DESIGN DEVELOPMENT

PROGRESS DOCUMENTS

These documents reflect progress and intent and may be subject to change, including additional details. These are not final construction documents and should not be used for final bidding or construction-related purposes.

DATE OF ISSUANCE: OCTOBER 11, 2023

Mark	Description	Date

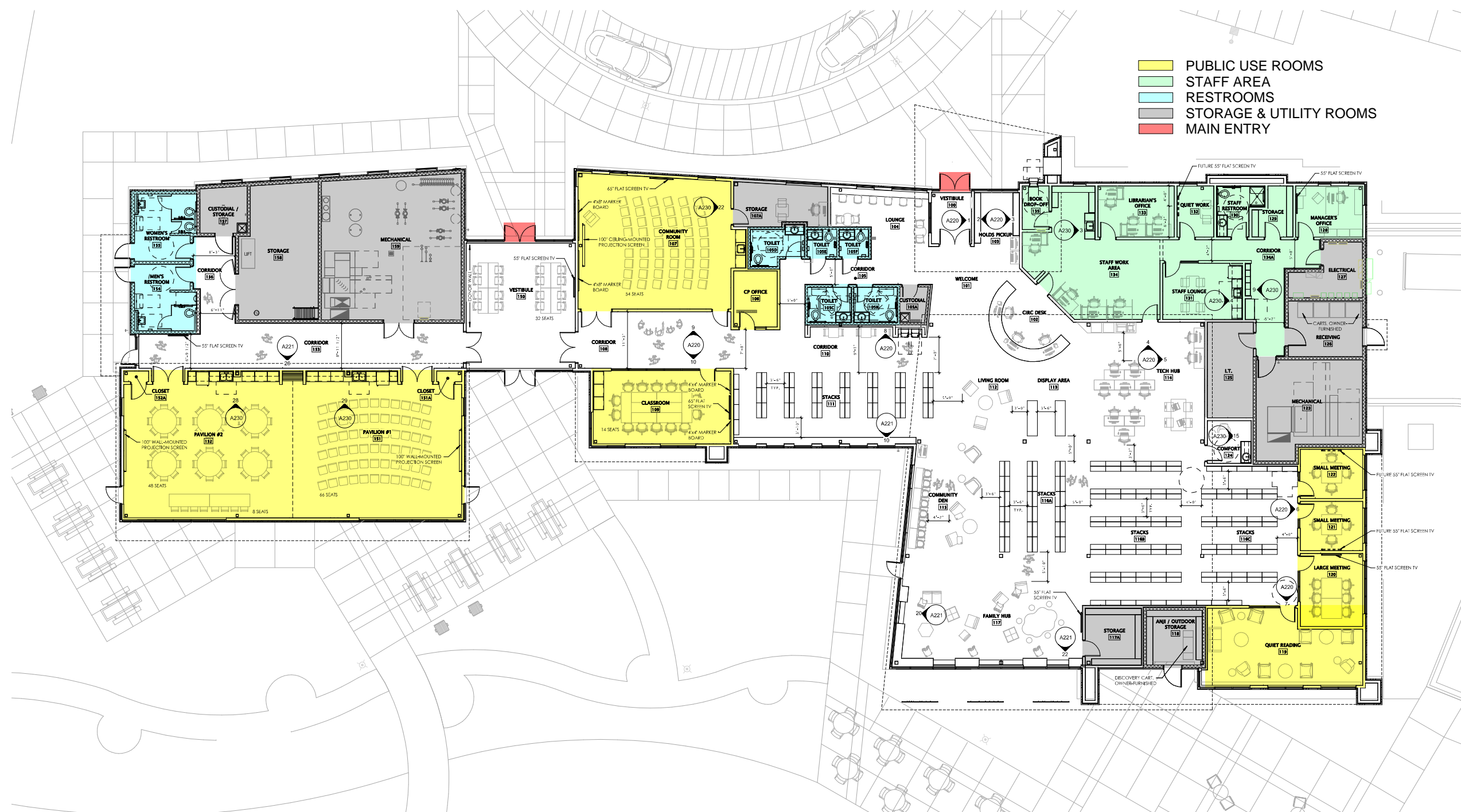
SHEET TITLE

FLOOR PLAN

SHEET NUMBER

A101

- PUBLIC USE ROOMS
- STAFF AREA
- RESTROOMS
- STORAGE & UTILITY ROOMS
- MAIN ENTRY



26 FIRST FLOOR FURNITURE AND INTERIOR SPACING PLAN
1/8" = 1'-0"



10/17/2023 11:53:32 AM



JLA
ARCHITECTS
MADISON | MILWAUKEE | DENVER
JLA-AP.COM

JLA PROJECT NUMBER: 20-0928



MADISON
PUBLIC
LIBRARY

play
MADISON
PARKS

IMAGINATION CENTER
AT REINDAHL PARK

SCHEMATIC DESIGN

PROGRESS DOCUMENTS

These documents reflect progress and intent and may be subject to change, including additional detail. These are not final construction documents and should not be used for final bidding or construction-related purposes.

DATE OF ISSUANCE AUGUST 18, 2023

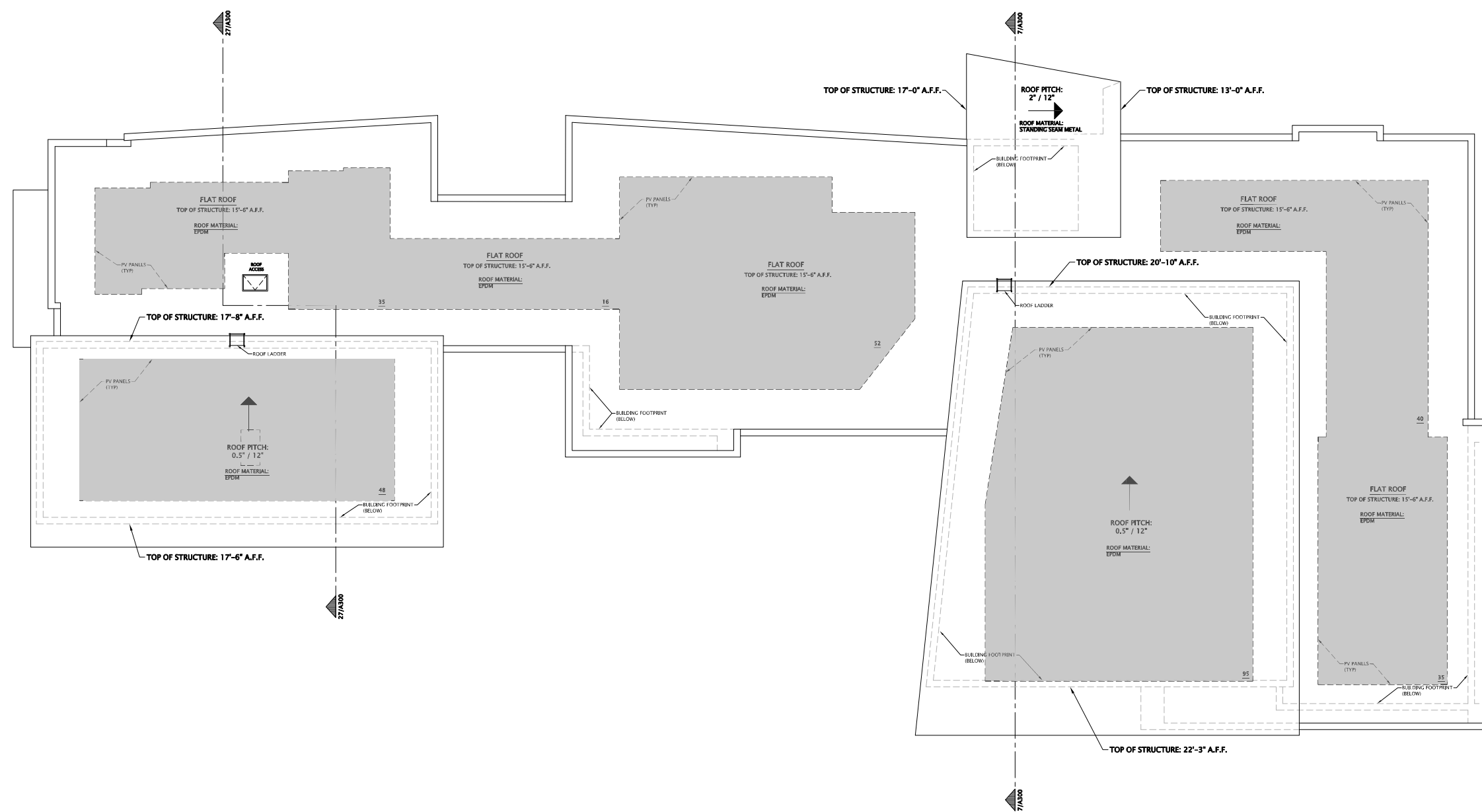
REVISION SCHEDULE		
Mark	Description	Date

SHEET TITLE

ROOF PLAN

SHEET NUMBER

A103



26 ROOF PLAN
1/8" = 1'-0"



3/18/2023 3:48:00 PM



PERSPECTIVE - LIBRARY FROM DRIVEWAY



PERSPECTIVE - LIBRARY FROM PARK



JLA
ARCHITECTS
MADISON | MILWAUKEE | DENVER
JLA-AP.COM

JLA PROJECT NUMBER: 20-0928



MADISON
PUBLIC
LIBRARY

play
MADISON
PARKS

IMAGINATION CENTER
AT REINDAHL PARK

SCHEMATIC DESIGN

PROGRESS DOCUMENTS

These documents reflect progress and intent and may be subject to change, including additional detail. These are not final construction documents and should not be used for final bidding or construction-related purposes.

DATE OF ISSUANCE AUGUST 18, 2023

REVISION SCHEDULE		
Mark	Description	Date

SHEET TITLE

EXTERIOR
RENDERINGS

SHEET NUMBER

A210



PERSPECTIVE - LIBRARY MAIN ENTRY



PERSPECTIVE - PARK COURTYARD



JLA
ARCHITECTS
MADISON | MILWAUKEE | DENVER
JLA-AP.COM

JLA PROJECT NUMBER: 20-0928



MADISON
PUBLIC
LIBRARY

play
MADISON
PARKS

IMAGINATION CENTER
AT REINDAHL PARK

SCHEMATIC DESIGN

PROGRESS DOCUMENTS

These documents reflect progress and intent and may be subject to change, including additional detail. These are not final construction documents and should not be used for final bidding or construction-related purposes.

DATE OF ISSUANCE: AUGUST 18, 2023

REVISION SCHEDULE		
Mark	Description	Date

SHEET TITLE
**EXTERIOR
RENDERINGS**

SHEET NUMBER
A211



PERSPECTIVE - PAVILION FROM PARK



PERSPECTIVE - PAVILION MAIN ENTRY



JLA
ARCHITECTS
MADISON | MILWAUKEE | DENVER
JLA-AP.COM

JLA PROJECT NUMBER: 20-0928



MADISON
PUBLIC
LIBRARY

play
MADISON
PARKS

IMAGINATION CENTER
AT REINDAHL PARK

SCHEMATIC DESIGN

PROGRESS DOCUMENTS

These documents reflect progress and intent and may be subject to change, including additional detail. These are not final construction documents and should not be used for final bidding or construction-related purposes.

DATE OF ISSUANCE: AUGUST 18, 2023

REVISION SCHEDULE		
Mark	Description	Date

SHEET TITLE
**EXTERIOR
RENDERINGS**

SHEET NUMBER
A212



PERSPECTIVE - PAVILION SIDE ENTRY



JLA PROJECT NUMBER: 20-0928



IMAGINATION CENTER
AT REINDAHL PARK

SCHEMATIC DESIGN

PROGRESS DOCUMENTS

These documents reflect progress and intent and may be subject to change, including additional detail. These are not final construction documents and should not be used for final bidding or construction-related purposes.

DATE OF ISSUANCE: AUGUST 18, 2023

REVISION SCHEDULE		
Mark	Description	Date

SHEET TITLE
**EXTERIOR
RENDERINGS**

SHEET NUMBER
A213



JLA
ARCHITECTS
MADISON | MILWAUKEE | DENVER
JLA-AP.COM

JLA PROJECT NUMBER: 20-0928



MADISON
PUBLIC
LIBRARY

play
MADISON
PARKS

IMAGINATION CENTER
AT REINDAHL PARK

SCHEMATIC DESIGN

PROGRESS DOCUMENTS

These documents reflect progress and intent and may be subject to change, including additional detail. These are not final construction documents and should not be used for final bidding or construction-related purposes.

DATE OF ISSUANCE AUGUST 18, 2023

REVISION SCHEDULE		
Mark	Description	Date

SHEET TITLE
**EXTERIOR
RENDERINGS**

SHEET NUMBER
A214



JLA PROJECT NUMBER: 20-0928



**IMAGINATION CENTER
AT REINDAHL PARK**

SCHEMATIC DESIGN

PROGRESS DOCUMENTS
 These documents reflect progress and intent and may be subject to change, including additional detail. These are not final construction documents and should not be used for final bidding or construction-related purposes.

DATE OF ISSUANCE: AUGUST 18, 2023

REVISION SCHEDULE		
Mark	Description	Date

SHEET TITLE
**EXTERIOR
 RENDERINGS**

SHEET NUMBER
A215



JLA
ARCHITECTS
MADISON | MILWAUKEE | DENVER
JLA-AP.COM

JLA PROJECT NUMBER: 20-0928



MADISON
PUBLIC
LIBRARY

play
MADISON
PARKS

IMAGINATION CENTER
AT REINDAHL PARK

SCHEMATIC DESIGN

PROGRESS DOCUMENTS

These documents reflect progress and intent and may be subject to change, including additional detail. These are not final construction documents and should not be used for final bidding or construction-related purposes.

DATE OF ISSUANCE AUGUST 18, 2023

REVISION SCHEDULE

Mark	Description	Date

SHEET TITLE

EXTERIOR
RENDERINGS

SHEET NUMBER

A216



JLA PROJECT NUMBER: 20-0928



**IMAGINATION CENTER
AT REINDAHL PARK**

SCHEMATIC DESIGN

PROGRESS DOCUMENTS

These documents reflect progress and intent and may be subject to change, including additional detail. These are not final construction documents and should not be used for final bidding or construction-related purposes.

DATE OF ISSUANCE: AUGUST 18, 2023

REVISION SCHEDULE		
Mark	Description	Date

SHEET TITLE
**EXTERIOR
RENDERINGS**

SHEET NUMBER
A217



INTERIOR PERSPECTIVE - FRONT DESK TO HALLWAY



INTERIOR PERSPECTIVE - FRONT DESK TO STACKS



JLA
ARCHITECTS
MADISON | MILWAUKEE | DENVER
JLA-AP.COM

JLA PROJECT NUMBER: 20-0928



MADISON
PUBLIC
LIBRARY

play
MADISON
PARKS

IMAGINATION CENTER
AT REINDAHL PARK

SCHEMATIC DESIGN

PROGRESS DOCUMENTS

These documents reflect progress and intent and may be subject to change, including additional detail. These are not final construction documents and should not be used for final bidding or construction-related purposes.

DATE OF ISSUANCE AUGUST 18, 2023

REVISION SCHEDULE		
Mark	Description	Date

SHEET TITLE

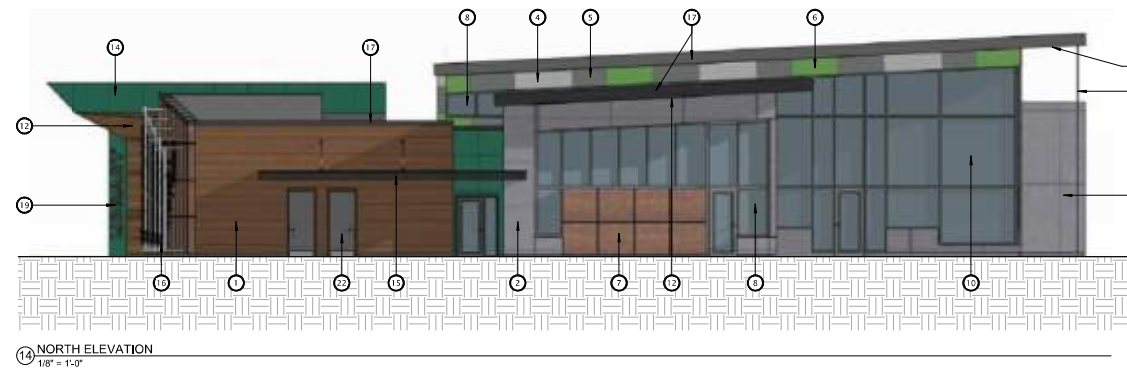
INTERIOR
RENDERINGS

SHEET NUMBER

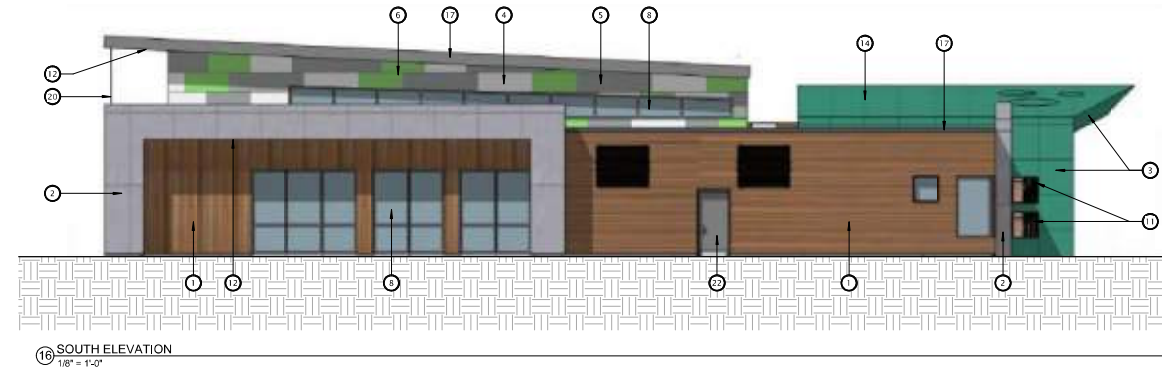
A240

EXTERIOR MATERIALS SCHEDULE		
MARK	MANUFACTURER	COLOR
1	TRESPA WALL PANELS	MILANO TERRA
2	TRESPA WALL PANELS	TEMPERED GREY
3	TRESPA WALL PANELS	MID-GREEN
4	TRESPA WALL PANELS	PURE WHITE
5	TRESPA WALL PANELS	ZINC GREY
6	TRESPA WALL PANELS	SPRING GREEN
7	ALUCOBOND WALL PANELS	RUSTED METAL
8	INSULATED ALUMINUM STOREFRONT	CLEAR ANODIZED
9	ALUMINUM STOREFRONT SPANDREL GLAZING	CLEAR ANODIZED
10	INSULATED ALUMINUM CURTAINWALL	CLEAR ANODIZED
11	TRESPA-WRAPPED WALL OPENINGS	MID-GREEN
12	TRESPA SOFFIT PANELS	MILANO TERRA

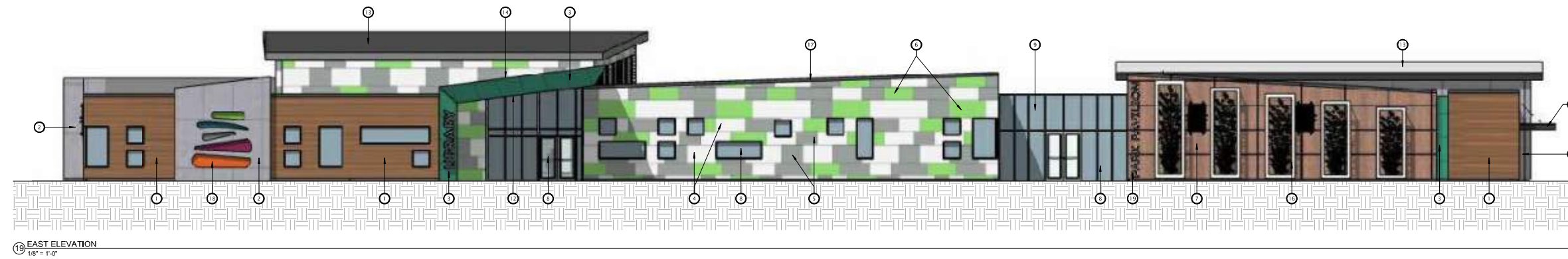
EXTERIOR MATERIALS SCHEDULE		
MARK	MANUFACTURER	COLOR
13	EDPM ROOF	BLACK
14	STANDING SEAM METAL ROOF	TO MATCH TRESPA MID-GREEN
15	METAL ROOF AWNING	BLACK
16	METAL & CABLE RAIL WALL TRELLIS	WHITE
17	METAL WALL COPING	DARK GREY
18	BUILDING LOGO	TBD
19	DIMENSIONAL BUILDING LETTERING	TBD
20	EXTERIOR SHADING DEVICE	TBD
21	ART INSTALLATION	TBD
22	INSULATED HOLLOW METAL DOOR	DARK GREY
23	ANJLI PLAY WALL	MATERIAL TBD



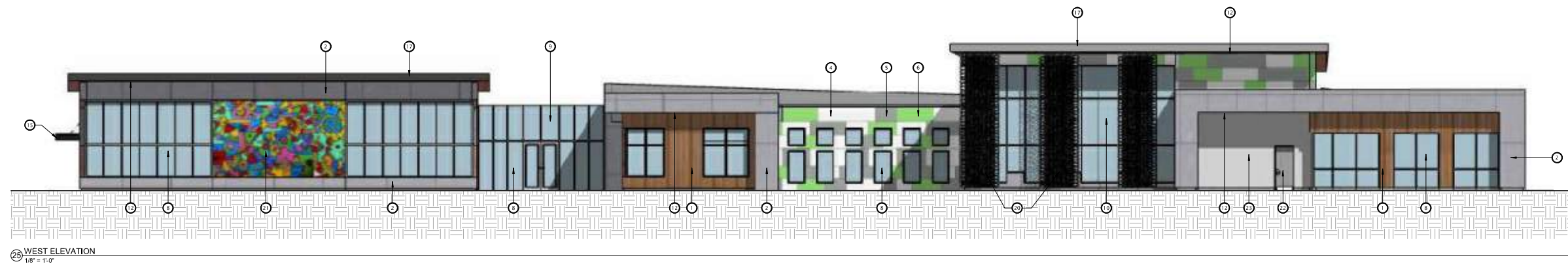
14 NORTH ELEVATION
1/8" = 1'-0"



15 SOUTH ELEVATION
1/8" = 1'-0"



16 EAST ELEVATION
1/8" = 1'-0"



25 WEST ELEVATION
1/8" = 1'-0"



JLA PROJECT NUMBER: 20-0928



IMAGINATION CENTER
AT REINDAHL PARK

SCHEMATIC DESIGN

PROGRESS DOCUMENTS

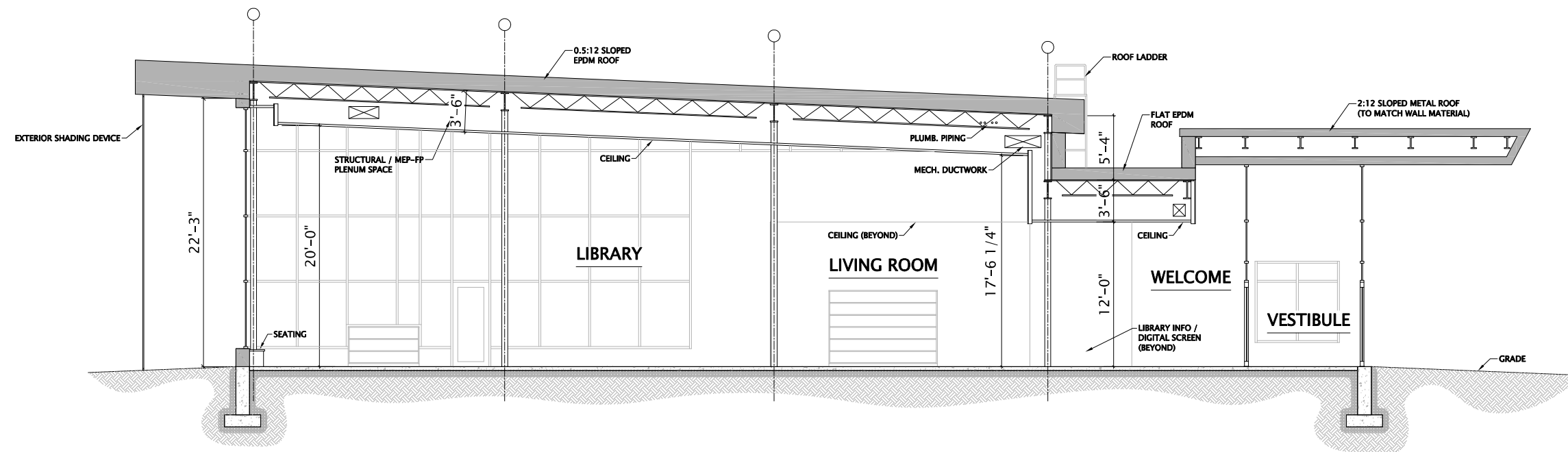
These documents reflect progress and intent and may be subject to change, including additional detail. These are not final construction documents and should not be used for final bidding or construction-related purposes.

DATE OF ISSUANCE AUGUST 18, 2023

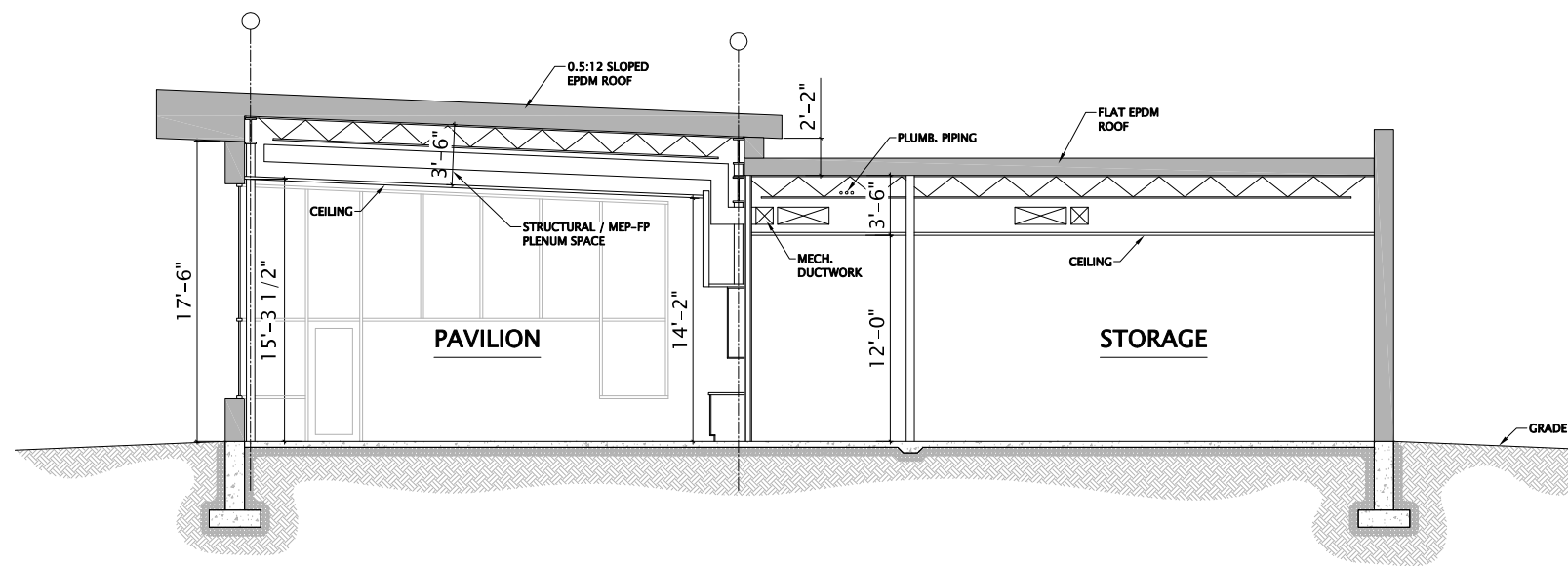
REVISION SCHEDULE		
Mark	Description	Date

SHEET TITLE
EXTERIOR
ELEVATIONS

SHEET NUMBER
A200



7 BUILDING SECTION
1/4" = 1'-0"



8 BUILDING SECTION
1/4" = 1'-0"



JLA
ARCHITECTS
MADISON | MILWAUKEE | DENVER
JLA-AP.COM

JLA PROJECT NUMBER: 20-0928



IMAGINATION CENTER
AT REINDAHL PARK

SCHEMATIC DESIGN

PROGRESS DOCUMENTS

These documents reflect progress and intent and may be subject to change, including additional detail. These are not final construction documents and should not be used for final bidding or construction-related purposes.

DATE OF ISSUANCE: AUGUST 18, 2023

REVISION SCHEDULE		
Mark	Description	Date

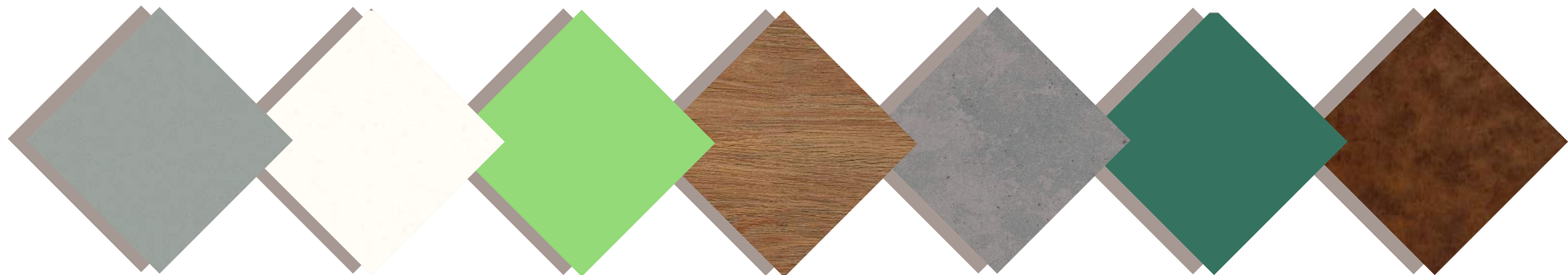
SHEET TITLE

BUILDING SECTIONS

SHEET NUMBER

A300

EXTERIOR MATERIAL SELECTIONS



ZINC GRAY
TRESPA LAMINATED PANEL

PURE WHITE
TRESPA LAMINATED PANEL

SPRING GREEN
TRESPA LAMINATED PANEL

MILANO TERRA
TRESPA LAMINATED PANEL

TEMPERED GRAY
TRESPA LAMINATED PANEL

MID GREEN
TRESPA LAMINATED PANEL

RUSTED METAL
TRESPA LAMINATED PANEL