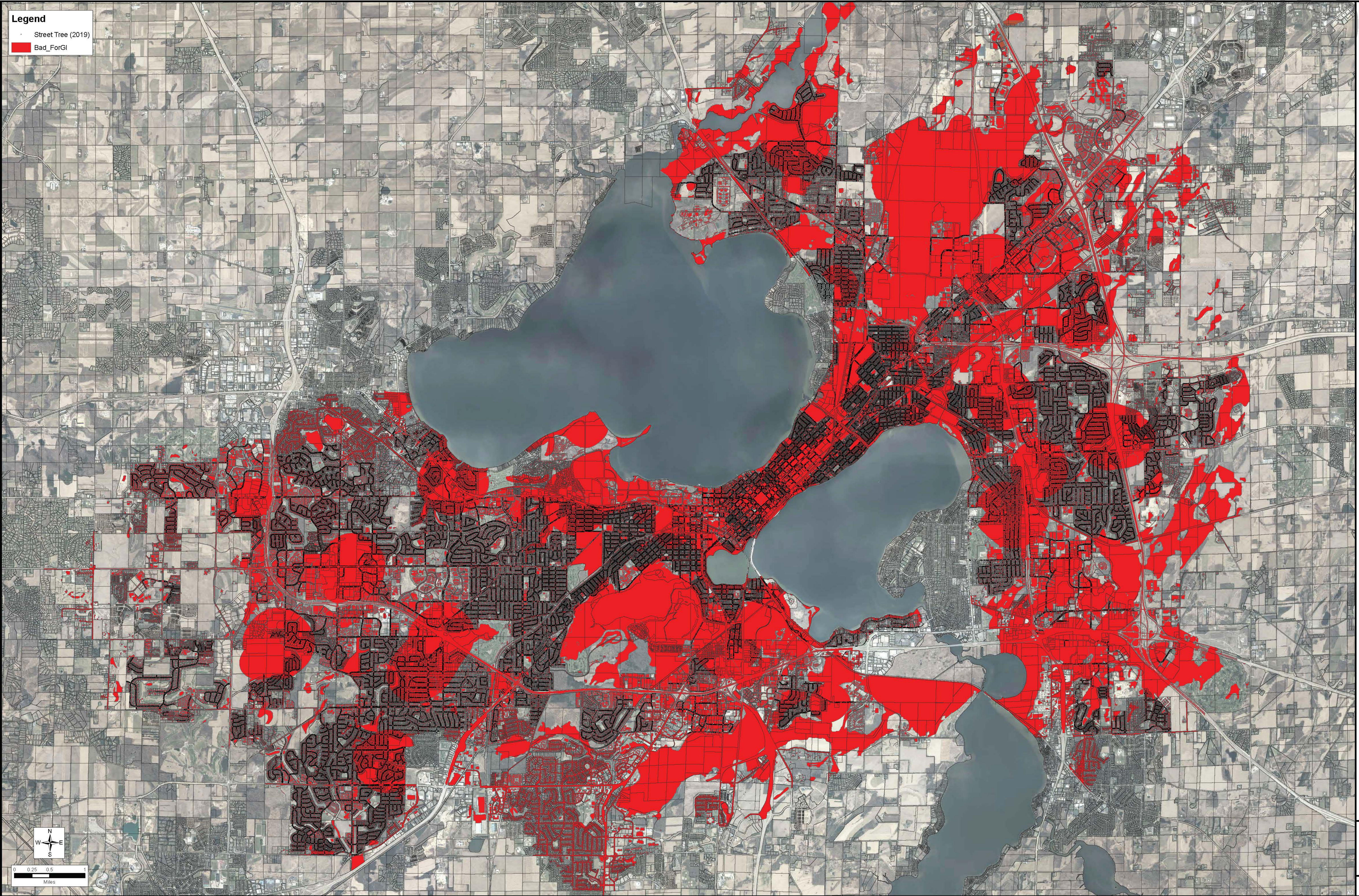
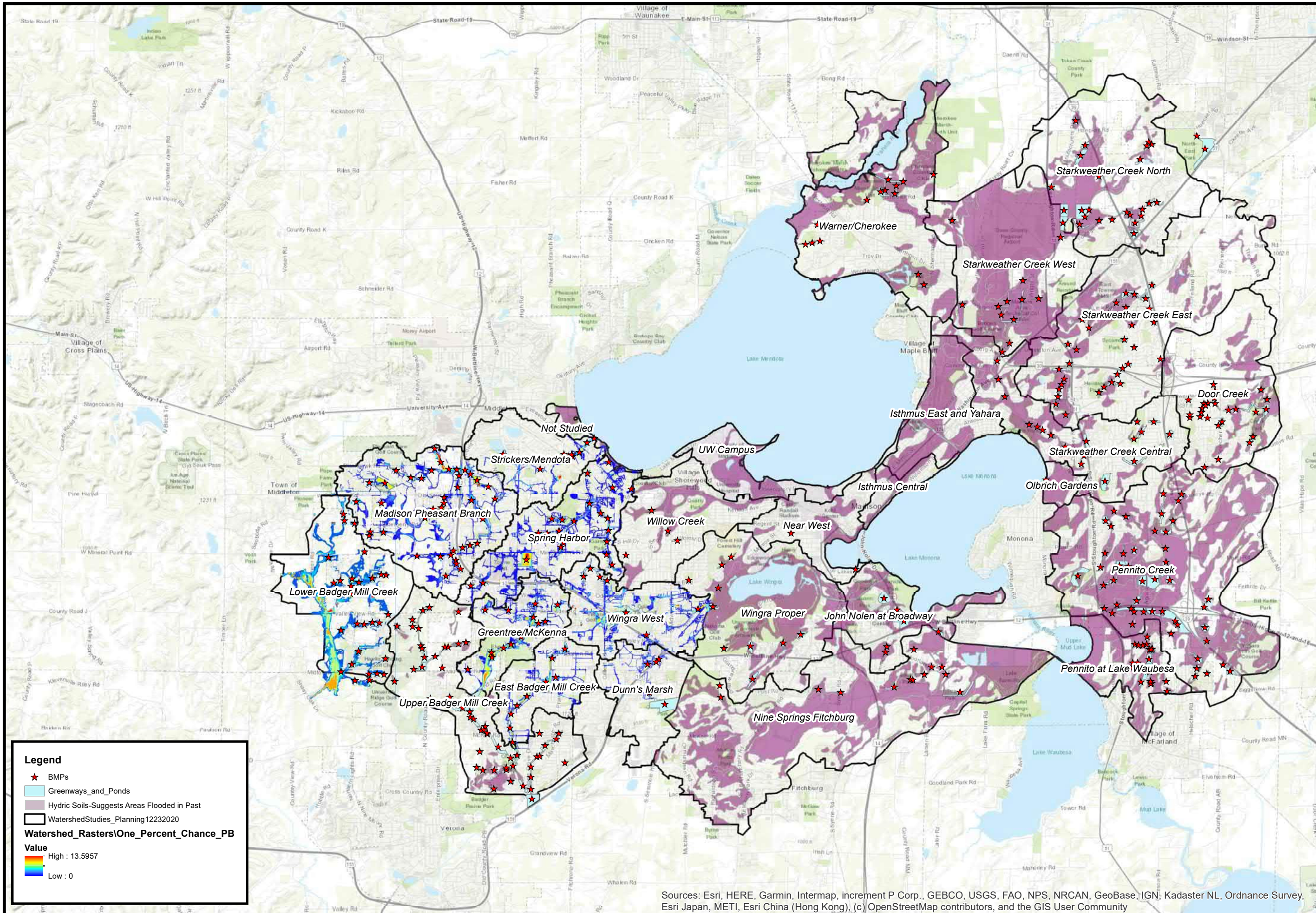


**Legend**  
Street Tree (2019)  
Bad\_ForGI



**BAD FOR GI**  
**MADISON COMPLETE GREEN STREETS**  
**CITY OF MADISON**  
**DANE COUNTY, WISCONSIN**





**Legend**

- ★ BMPs
- Greenways\_and\_Ponds
- Hydic Soils-Suggests Areas Flooded in Past
- WatershedStudies\_Planning12232020
- Watershed\_Rasters\One\_Percent\_Chance\_PB

**Value**

High : 13.5957

Low : 0

Sources: Esri, HERE, Garmin, Intermap, increment P Corp., GEBCO, USGS, FAO, NPS, NRCAN, GeoBase, IGN, Kadaster NL, Ordnance Survey, Esri Japan, METI, Esri China (Hong Kong), (c) OpenStreetMap contributors, and the GIS User Community

**FLOODING FREQUENCY MAP**

**COMPLETE GREEN STREETS  
CITY OF MADISON  
DANE COUNTY, WI**



**FIGURE 31  
3732.002**

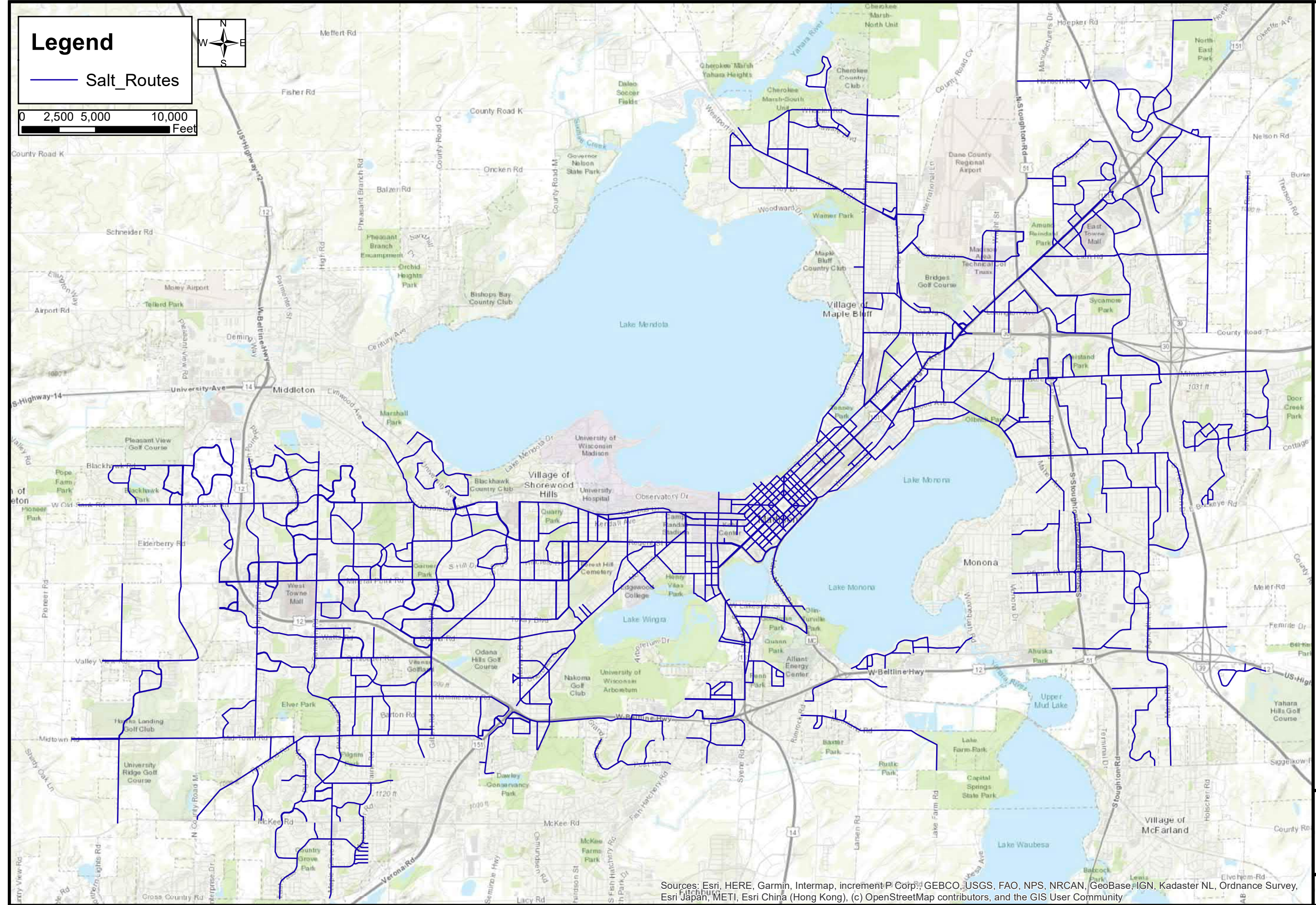


**Legend**

— Salt\_Routes



0 2,500 5,000 10,000  
Feet



**WINTER SALT ROUTES**  
**COMPLETE GREEN STREETS**  
**CITY OF MADISON**  
**DANE COUNTY, WI**



**FIGURE 30**  
**3732.002**

Sources: Esri, HERE, Garmin, Intermap, increment P Corp., GEBCO, USGS, FAO, NPS, NRCAN, GeoBase, IGN, Kadaster NL, Ordnance Survey, Esri Japan, METI, Esri China (Hong Kong), (c) OpenStreetMap contributors, and the GIS User Community



**Legend**

- Wellhead\_Location
- No Wet Pond Within 400' of Well

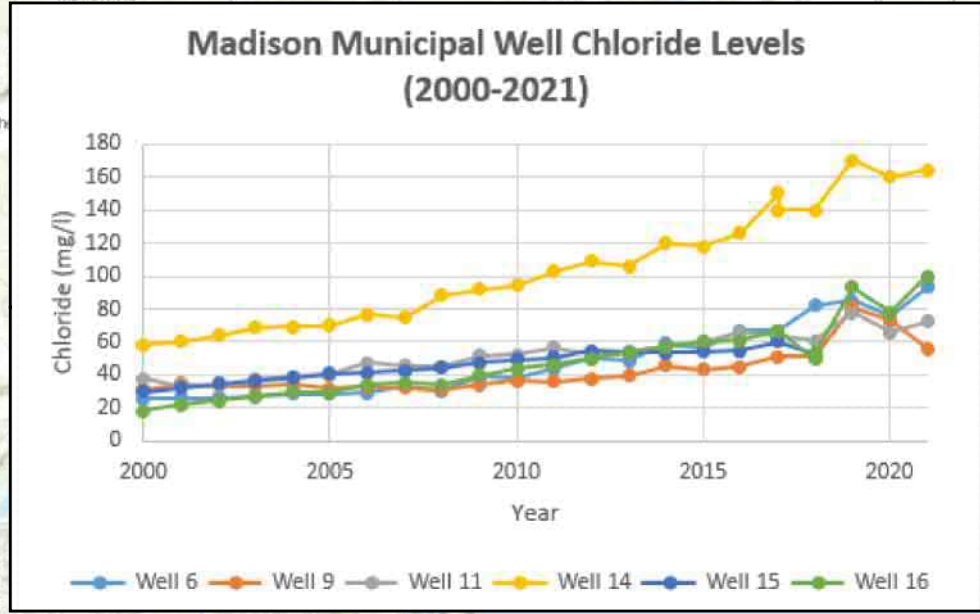
**FYI-Water Utility Restrictions**

**Restriction**

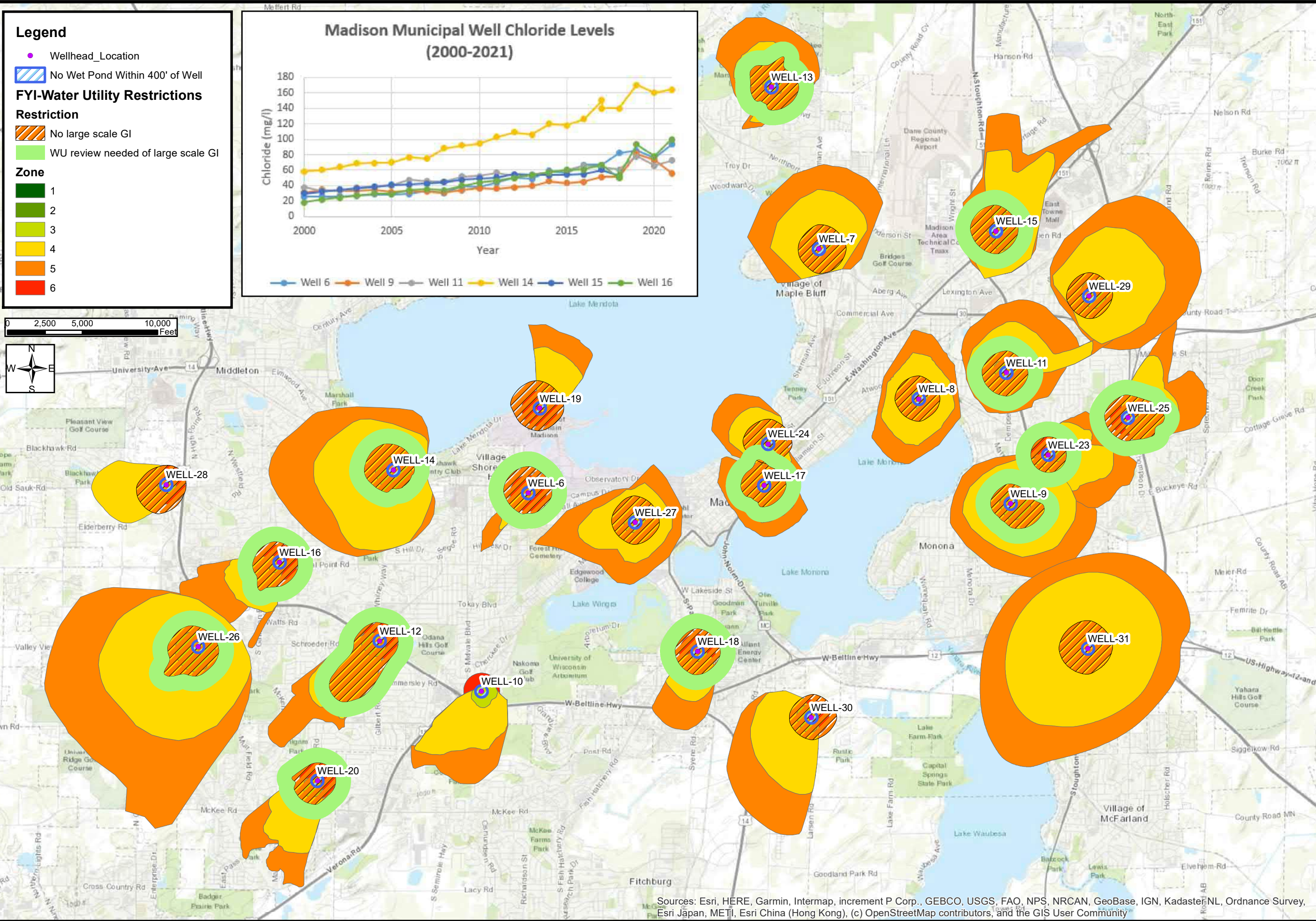
- No large scale GI
- WU review needed of large scale GI

**Zone**

- 1
- 2
- 3
- 4
- 5
- 6



0 2,500 5,000 10,000 Feet



Sources: Esri, HERE, Garmin, Intermap, increment P Corp., GEBCO, USGS, FAO, NPS, NRCAN, GeoBase, IGN, Kadaster NL, Ordnance Survey, Esri Japan, METI, Esri China (Hong Kong), (c) OpenStreetMap contributors, and the GIS User Community

**WELLHEAD PROTECTION ZONES**

**COMPLETE GREEN STREETS  
CITY OF MADISON  
DANE COUNTY, WI**



**FIGURE 29  
3732.002**