



Counseling at Clackamas

<https://www.clackamas.edu/campus-life/student-services/counseling>

503-594-3176



David Rompney Warm Line



- [David Rompney Oregon Warmline](#)
- (only residents of Oregon)(800) 698-2392
- Daily, 9am 11pm(Pacific Time)

• Asian Health
& Service
Center: [http
s://www.ahs
cpdx.org/](http://www.ahs
cpdx.org/)

503-872-
8822 (ext. 200)



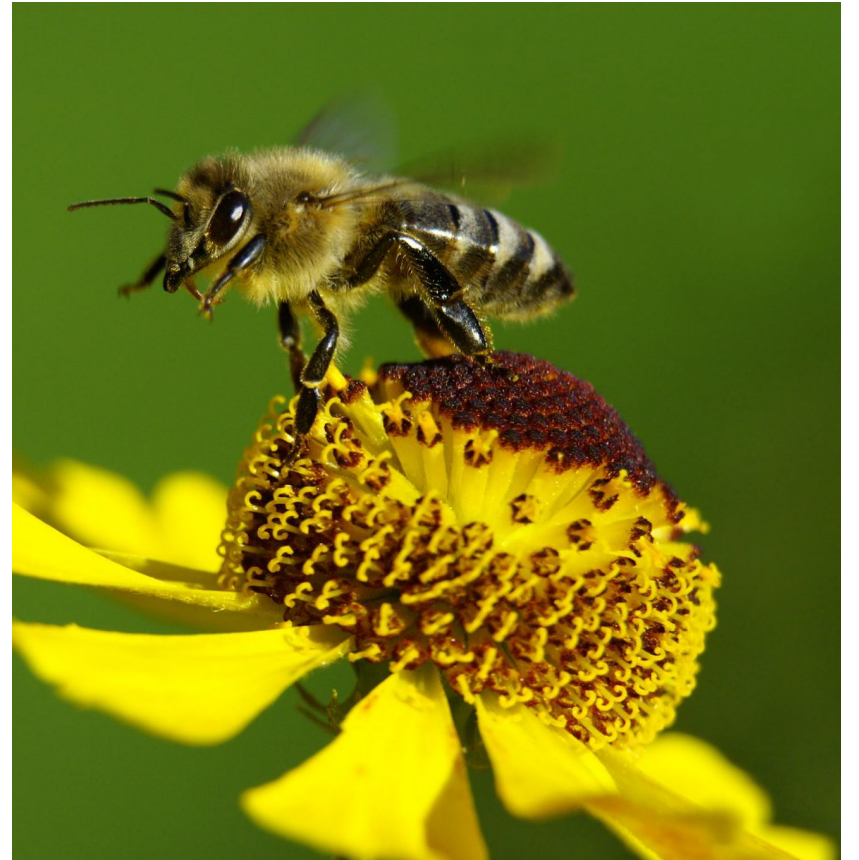
County Crisis Hotline

• **503-655-8585**



Addictions/Recovery:

- [Oregon Recovery Network](#)
- [Online Recovery Resources](#)
- [Recovery Dharma](#) (Buddhist approach to recovery)
- [Recovery Link](#)
- Digital recovery Support Services contact@myrecoverylink.com
- 267-748-2454
- [All-Recovery Meetings](#) for students in Recovery click [here](#) to contact





211

Call 211 or visit <https://www.211info.org/>

Send update suggestions to: tasia.sullivan@clackamas.edu