

# Hands-on Training



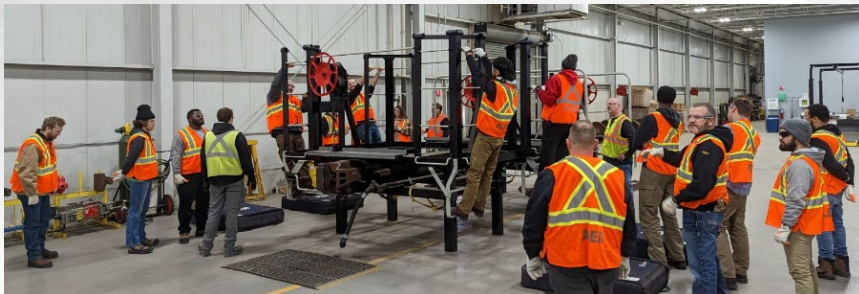
## **New-hire conductor progression:**

Familiarization with the shape and weight of a railcar knuckle, which joins railcars together – (L to R) a moulded plastic knuckle replica, increasing weights, a 65-pound knuckle.



## **Railcar mock-up (airbrakes):**

Provides railcar mechanics with a distinct visual aid to trace systems and identify common railcar components



## **Railcar mock-up (ladders):**

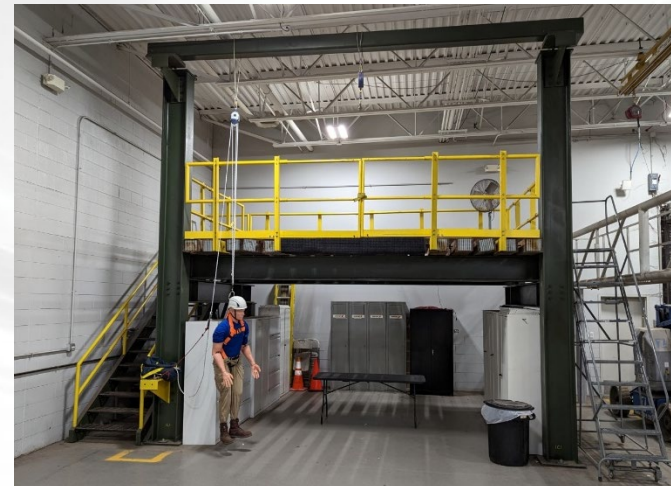
Training on how to safely mount, dismount and ride a railcar.

CN is committed to providing robust and comprehensive training to all employees. Hands-on learning in a controlled and safe environment is an invaluable tool for new employees to visualize and associate items they will encounter in the field.



## **Walking simulator:**

Replicates variable environmental conditions (e.g. icy surfaces), to train employees on best walking practices and "slow brain" focus when working.



## **Fall protection:**

Provides training on the safe use of fall protection.