

An abstract painting composed of various geometric shapes and vibrant colors including red, blue, yellow, green, and orange. The brushstrokes are visible, giving it a textured, layered appearance.

INTRODUCTION

lingering sun —

thefarmer'smarketpeppers

redder and greener

Painting by Anna Macrae
Haiku by Michael Dylan Welch



lingering sun —

thefarmer'smarketpeppers

redder and greener

INTRODUCTION

Introduction

Welcome to the City of Sammamish Comprehensive Plan! This plan looks forward to 2035, provides a vision for the future, identifies goals and policies to achieve that vision, creates a basis for the City's regulations, and guides future decision-making.

This plan builds on the City's 2003 Comprehensive Plan, responds to community needs, and fulfills the Washington Growth Management (GMA) requirements for periodic review. It also conforms to King County's Countywide Planning Policies and guidance from the Puget Sound Regional Council Vision 2040.

What is a Comprehensive Plan?

In short, it's a blueprint for the future character of the city. It guides decisions on land use, transportation, housing, capital facilities, parks, and the environment. It also sets standards for roads and other infrastructure, identifies how they'll be paid for, and establishes the basis for zoning and development regulations.

As suggested by the word "comprehensive," this plan encompasses topics that address the physical, social, and economic health of the City. A comprehensive plan takes a long-range perspective, in this

Have a plan.
Follow the
plan, and you'll
be surprised
how successful
you can be.

Paul "Bear" Bryant

case looking 20 years into the future. For this reason, guidance is intentionally general, providing broad direction, but not prescribing specific implementation measures or regulatory actions. A plan is also a living document, adaptable to evolving conditions, and offering a framework for the consideration of policy changes.

What's in the Comprehensive Plan?

As established by the GMA, the City is required to include chapters that address land use, housing, transportation, capital facilities, utilities and shorelines. The City may also include chapters on other topics of local importance. In this case, the City of Sammamish has opted to include chapters on the environment and parks.

In addition to this introduction, the Sammamish Comprehensive Plan contains eight chapters, or elements, with goals and policies identified for each element. The goals and policies are numbered and labeled according to their respective elements. Goals and policies are aspirational and provide the means for Sammamish to grow and prosper and yet maintain the unique character of the city for current and future generations. The contents of each element are briefly summarized below.

ELEMENT	ELEMENT FOCUS
Land Use	Land use capacity to meet projected growth, compatibility, environmental protection, sense of community, community character
Environment & Conservation	Environmental stewardship, protection of habitat areas, natural hazards, wetland protection, preservation of surface and groundwater quality, air quality and climate change, sustainability, and forested character
Housing	Housing capacity to meet projected growth, housing preservation, provision of a range of housing types to serve diverse needs and all economic segments of the community
Transportation	Transportation to support land uses envisioned by the Comprehensive Plan, including movement of people and goods
Utilities	Telecommunications, electricity, water and sewer service, and stormwater systems
Parks, Recreation, Open Space	Parks, recreation, open space; athletic fields; recreation facilities as established in the City's adopted Parks, Recreation and Open Space Plan
Capital Facilities	Facilities and infrastructure needed for public services that will support planned population and employment
Shoreline	Shoreline use, environmental protection of shoreline areas, and public access as established in the City's adopted Shoreline Master Plan

Art in the Comprehensive Plan

In the summer of 2014, the City of Sammamish Arts Commission issued a call to artists for artwork in the Comprehensive Plan. Suggestions for types of artwork to help enhance the Comprehensive Plan included photography, short poetry, and abstract designs. Ultimately, the City selected two submittals, both from residents of the City of Sammamish.

From the Ashes, a 36' by 36" abstract in oil paint, was submitted by Anna Macrae. Macrae is a third generation artist, born and educated in England, she has lived in Sammamish since 2001. She is a lifelong artist, and from an early age she surrounded herself with art making. She gained qualifications in Civil Engineering, and now focuses on her true passion for the arts.

Macrae is a process driven artist. Her work is generated in response to the materials that she uses, together with the techniques and processes that she has developed. Her website is www.annamacrae.com.

As the artist describes From the Ashes,

This piece references the building of neighborhoods and communities. It shows strong color blocks in patterns that describe an evolving City landscape. It shows some areas that are more densely populated with mark making, and others with open spaces. It also shows areas of overlapping information and others where you can still see the history of what was there before.

The piece is built up of many layers of oil paint, for color and surface interest. There is a richness of marks, some with a brush and some with a platelet knife, and the application of the paint runs from thick to thin.

From the Ashes is shown on the following page, and excerpts from the piece are shown at the start of each plan element.

Samples of short verse, submitted by Michael Dylan Welch, are also included at the start of each element which represents his varied impressions of life in this city. Welch is poet laureate for Redmond, Washington, and lives in Sammamish. He is founder of National Haiku Writing Month, runs SoulFood Poetry Night in Redmond, and is a curator of Eastside Writes and Redmond Association of Spokenword readings. He has published numerous books of poetry, and his poems have appeared in hundreds of journals and anthologies. His website is www.graceguts.com.



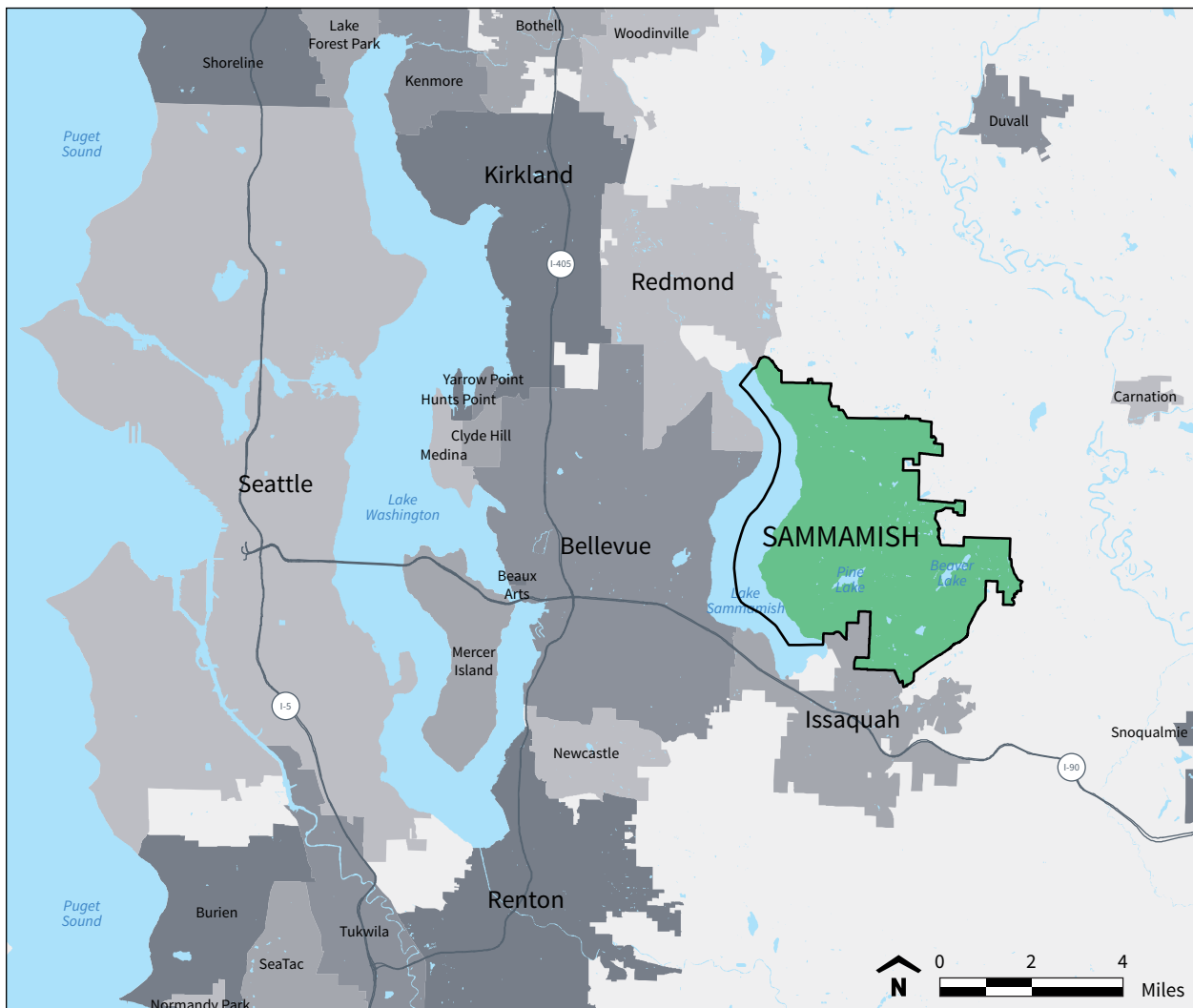
From the Ashes
by Anna Macrae

About Sammamish

A Snapshot of Sammamish

The City of Sammamish is located west of the Cascade Mountains in the Puget Sound region, about 20 miles east of Seattle. The city takes its name from Lake Sammamish, a picturesque body of water that forms the city's western border. To the south, Sammamish is bordered by Issaquah, to the north by Redmond, and to the east, by rural King County. Sammamish covers 22 square miles, measures almost seven miles north to south, and six miles east to west. Including Lake Sammamish, there are three major lakes in the city. The other two are Pine Lake and Beaver Lake.

City of Sammamish
Vicinity Map



2016 SAMMAMISH POPULATION:

60,000

(estimated population, including 2016 annexation of Klahanie and adjacent neighborhoods)

In 2012, Sammamish had a population of 47,420 residents. The City's population and housing stock is oriented to families with children; roughly one-third of the population is under the age of 18. Comparatively, the numbers of young adults under the age of 30, and older adults over the age of 65, are relatively small.

Sammamish is largely a low-density residential city, with about 60 percent of its land area developed in single-family residences. Commercial and multi-family uses occupy about three percent of the land area. About 11 percent of the city is vacant land.¹

Additional information about Sammamish can be found in the City of Sammamish Community Profile, January 2014 (please see the Introduction Element Background Information).

A Short History

Incorporated in 1999, Sammamish is the area's newest city. While the city itself is still quite young, the land it occupies has a long history. The shore of Lake Sammamish was home to bands from both the Duwamish and Snoqualmie tribes for at least 13,000 years. These early residents are part of the Lushootseed-speaking peoples, which includes tribes from around the Puget Sound watershed, including the Tulalip, Skagit, and Sauk-Suiattle to the north and the Skykomish, Suquamish, Muckleshoot, Puyallup, Nisqually, and Sahewamish in the south.



Snoqualmie tribal members, Inglewood (later Sammamish), ca. 1900 (courtesy Issaquah Historical Society, neg. no, 86-18-306)

The tribes lived off many plants and animals that are familiar to us today, practicing a kind of agroecology involving productivity, stability, sustainability and equitability. They deliberately managed the landscape to produce more of what was useful to the tribe for clothing, shelter, food, and healing, while retaining other native plants and keeping the stable forest ecosystem intact. Salmon was harvested from Lake Sammamish. A rich variety of vegetables such as nettle, cow parsnip, salmonberry and thimbleberry shoots; roots such as camas, onion, riceroot, wapato, and fern roots; and berries such as salal, salmonberry, dewberry, blueberry, huckleberry and serviceberry were gathered. Animals, including deer, elk, beaver, bear and cougar, were hunted for food and other resources. The western red cedar was a key resource. The wood provided the building material for canoes. Fibers from the bark was made into rope and baskets. Oils from the tree's wood provide insect repellent. And leaves from the western red cedar were used for medicinal and other purposes.

¹ Washington State Department of Ecology. 2010 land use GIS dataset.

Pioneer settlement by European-Americans began in the 1870s. Newcomers cleared land for agriculture on homesteads, with some later moving on to other enterprises. Among other things, the new farmers raised hops. They also employed some native people on these farms. Logging became the main industry at the end of the 19th century, with the Monohon Mill opening in the 1880s, and the Lake Sammamish Shingle Mill at Weber Point opening in 1898.

By the 1930s, logging had declined, and Sammamish became home to several resorts, at both Pine Lake and Beaver Lake. Agriculture was still a major land use through the mid-20th century, but a major change came along when residential development began to take off in the 1960s. By the 1970s and 80s, the lakeside resorts had closed down and the area was dominated by single family homes, schools, and a nearby shopping/commercial center.

By the 1980s, as the pace of development on the Sammamish plateau was accelerating, interest in incorporation or annexation to a neighboring city was also increasing. In the early 1990s, two separate elections, one for incorporation and one for annexation, were defeated. By the late 1990s, the path of incorporation emerged as the most viable option for the area to achieve cityhood. On November 3, 1998, nearly 8,000 citizens voted to create the City of Sammamish. At midnight on August 31, 1999, incorporation took effect and Sammamish became its own City.

Vision and Planning Framework

This section contains the City of Sammamish Comprehensive Plan Vision Statement and frameworks for sustainability and health, citizen participation and amending the Comprehensive Plan.

Sammamish Vision

A vision statement is an aspirational description of the future that the City is trying to achieve through its plans and actions. For this Comprehensive Plan, the vision statement should use words to paint a picture of the City of Sammamish in 2035.

The City's 2003 Comprehensive Plan contains a vision statement that served as a good starting place for reviewing and considering



Inglewood (later Sammamish) logger, ca. 1900 (courtesy Issaquah Historical Society, neg. no. 86-18-242b)



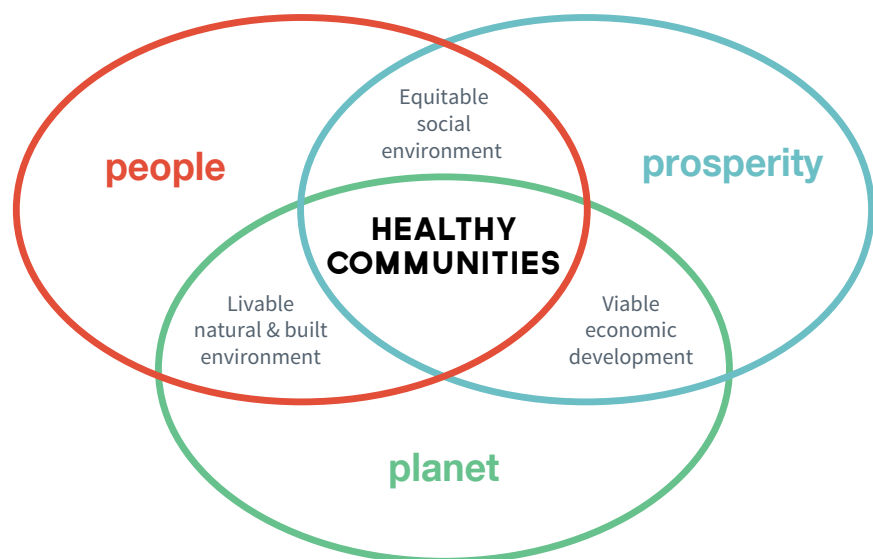
Docks at Pine Lake Resort, Sammamish Plateau, ca. 1958 (courtesy Sammamish Heritage Society)

an updated vision to 2035. Citizens were asked what they value about Sammamish and helped to identify priorities for the future. Recognizing that, 20 years in the future, today's youth will be adults, middle and high school students also participated in helping to prioritize ideas for what Sammamish should be like in 2035. The City Council and Planning Commission reviewed these findings and used this information to develop the updated vision for the City.

Sammamish is a vibrant bedroom community blessed with a well-preserved natural environment, a family-friendly, kid-safe culture, and unrivaled connectedness. From its expanding tree canopy, to its peaceful neighborhoods, to its multi-modal transportation resources, Sammamish captures the best of the past even as it embraces a burgeoning digital future and meets housing affordability through balanced, sustainable housing. It is a state-of-the-art community—engaged, responsive and generous in its support for the full range of human endeavor.

Health and Sustainability

Healthy and sustainable places are built on a foundation that considers the needs of the community with respect to environmental quality, economic vitality and social equity. As shown in the diagram below, these characteristics are also referred to as people, prosperity and planet. Healthy and sustainable communities are in balance with respect to people, prosperity and planet.



The City of Sammamish has prioritized sustainability and health as an overriding goal for the Comprehensive Plan. The Health and Sustainability Framework, shown below, is the foundation for incorporating health and sustainability goals and policies throughout the Comprehensive Plan. In each element, goals and policies that focus specifically on sustainability and healthy communities are highlighted with the icon at right. These goals and policies are also consolidated on the following pages in Table I-1, Sustainability Goals and Policies.

In each element, goals and policies that focus specifically on sustainability and healthy communities are highlighted with this icon.



Framework for Health and Sustainability

- HS.1 Create and protect healthy habitat.
- HS.2 Maintain a diverse ecosystem supporting a variety of wildlife.
- HS.3 Maintain Sammamish's forested character.
- HS.4 Conserve energy usage in buildings.
- HS.5 Conserve water and protect water quality.
- HS.6 Protect air quality.
- HS.7 Reduce energy consumption and emissions related to mobility.
- HS.8 Foster healthy neighborhoods and promote a citywide culture of environmental and human health.
- HS.9 Promote sustainable development through the use of environmentally sensitive building techniques and low impact stormwater methods.
- HS.10 Minimize the paved area of rights-of-way to the minimum infrastructure required for mobility and safety.
- HS.12 Promote inclusive citizen involvement in shaping decisions for Sammamish's future.
- HS.13 Support a regional economy that provides opportunities for economic vitality.

Table I-1
Sustainability Goals and Policies

ELEMENT	SUSTAINABILITY GOALS AND POLICIES*	
Land Use	Goal LU.6	Promote development design that maintains a harmonious relationship with the natural environment.
	Goal LU.7	Support a land use pattern that promotes community health and connectivity within and between neighborhoods and active transportation routes consistent with public safety needs.
	Goal LU.9	Encourage sustainable development.
	Goal LU.11	Establish a community that maintains and enhances the quality of life for everyone living and working within Sammamish.
Environment & Conservation	Goal EC.1	Serve as a leader in environmental stewardship of the natural environment for current and future generations.
	Goal EC.2	Protect people, property and the environment in areas of natural hazards.
	Goal EC.3	Protect wetlands and other water resources from encroachment and degradation and encourage restoration of such resources.
	Goal EC.4	Protect and promote a diversity of plant, pollinator and animal species habitat in Sammamish.
	Goal EC.5	Maintain and protect surface water and groundwater resources that serve the community and enhance the quality of life.
	Goal EC.6	Improve and preserve air quality.
	Goal EC.7	Support regional efforts in mitigating and adapting to climate change.
	Goal EC.8	Sammamish is a sustainable city.
	Goal EC.9	Increase the sustainability and efficiency of building practices in Sammamish.
	Goal EC.10	Maintain and improve the City's forested character.
Housing	Policy H.2.9	Permit context-sensitive residential clustering, where appropriate, as a means of protecting environmentally sensitive areas and providing more open space.
	Policy H.2.12	Promote location-efficient and energy-efficient housing choices through incentives and other means.

ELEMENT	SUSTAINABILITY GOALS AND POLICIES*	
Transportation	Goal T.2	Greater Options and Mobility. Invest in transportation systems that offer greater options, mobility and access in support of the city's growth strategy.
	Goal T.4	Sustainability. Design and manage the city's transportation system to minimize the negative impacts of transportation on the natural environment, to promote public health and safety, and to achieve optimum efficiency.
Utilities	Goal UT.5	Encourage the use of innovative measures and new technologies to reduce overall demand and enhance service to city residents.
	Goal UT.6	Encourage conservation of water and protect water quality.
Parks, Recreation, Open Space	Goal P.5	Maintain Sammamish parks and recreation facilities to ensure longevity of assets, a positive aesthetic and sensory experience, preservation of habitat and natural systems, and safety for park patrons.
Capital Facilities	Goal CF.4	Design and locate capital facilities with features and characteristics that support the environment, energy efficiency, aesthetics, technological innovation, cost-effectiveness, and sustainability.
Shoreline	Shoreline goals and policies that address the following topics: <ul style="list-style-type: none"> • Conservation • Shoreline Restoration and Enhancement • Critical Areas and Environmental Protection • Flood Hazard Reduction • Restoration and Enhancement • Shoreline Vegetation Conservation • Site Planning • Water Quality, Stormwater and Nonpoint Pollution 	

*Please note that supporting policies for each of the listed goals also support sustainability and health.

Regional Planning and Vision 2040

The Sammamish Comprehensive Plan was developed to support and help implement the multicounty policy guidance of Vision 2040. The following briefly summarizes how the city's Comprehensive Plan advances the overall direction established by Vision 2040.

A systems approach emphasizes an understanding of the interdependent and interactive relationships between the elements of the comprehensive plan.

Sammamish's comprehensive plan advances a sustainable approach to growth and future development. The plan incorporates a systems approach to planning and decision-making that addresses protection of the natural environment. The plan commits to maintaining and restoring ecosystems, through steps to conserve key habitats, maintain and protect surface and groundwater resources and reduce greenhouse gas emissions. The plan includes provisions that ensure that a healthy environment remains available for future generations in our city.

The comprehensive plan has been updated based on residential and employment targets that align with Vision 2040. The plan identifies the targeted number of housing units in the city for the year 2035.

The comprehensive plan addresses each of the policy areas in Vision 2040. Comprehensive plan policies address habitat protection, water conservation, air quality, and climate change. Environmentally friendly development techniques, such as low-impact development are supported. The plan calls for compact urban development and includes development standards for mixed use development. The housing element commits to expanding housing production at all income levels to meet the diverse needs of both current and future residents. Economic development policies focus on development of designated commercial centers, and support a distinctive community character and high quality of life as key economic development drivers. The transportation element advances cleaner and more sustainable mobility, with provisions for complete streets, alternatives to driving alone and community health. Transportation planning is coordinated with neighboring jurisdictions, including level-of-service standards and concurrency provisions. Public service policies emphasize sustainability and conservation. The comprehensive plan also addresses local implementation actions in Vision 2040, such as co-location of public facilities and housing targets.

Citizen Participation

An active public participation program was an essential part of the 2015 comprehensive plan re-write. The goals of public outreach were to:

- Encourage participation among a wide range of citizens
- Obtain meaningful, productive and substantive input to the content of the comprehensive plan
- Communicate to participants how their input affects decisions
- Engage the public in resolving conflicts among competing interests
- Build a framework that encourages a sustained dialog
- Evaluation and document participation throughout the life of the project

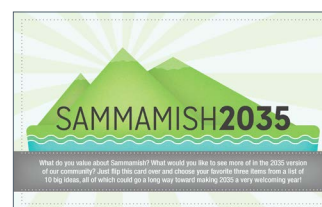
In order to achieve these goals, the City undertook a wide variety of activities. Major components of the City's outreach program included:

1. Traveling Exhibit and Materials. Traveling materials were intended to reach out to community members who may be interested in the comprehensive plan, but not able to attend traditional public meetings or workshops. Materials included:

- **Tabletop Display.** Early in the planning process, traveling tabletop display was developed to describe the Comprehensive Plan rewrite, what it is, why it matters to City residents and inviting input. The tabletop display was circulated through multiple venues in the City, including the library, coffee shops, grocery stores, the Arts Fair, the Farmers' Market, and City Hall. City staff and Planning Commissioners typically accompanied the display in order to answer questions and engage directly with citizens about issues of interest.
- **Postcard/questionnaire.** During the visioning process, a postcard/questionnaire was developed to engage citizens in questions about their preferences for the future of the community. Staff took the questionnaire to local activity areas and events, such as the South Sammamish Park & Ride, grocery stores and the Nightmare at Beaver Lake.
- **Posters.** As the Planning Commission was developing preliminary recommendations, a series of posters were prepared and posted on a rotating basis throughout the City. Posters described each draft element, the "big ideas" contained in each draft element and invited input on these issues. Each poster also included a QR code for easier



Traveling tabletop display



PICK THE TOP THREE MOST IMPORTANT IDEAS FOR SAMMAMISH IN 2035

<input type="checkbox"/> Lots of recreational opportunities	<input type="checkbox"/> More connections between our neighborhoods
<input type="checkbox"/> Small town atmosphere	<input type="checkbox"/> A sustainable city
<input type="checkbox"/> Plenty of places to shop, eat out at, watch movies and other recreational activities	<input type="checkbox"/> A green city – lots of trees and natural features
<input type="checkbox"/> More roads to and from the City	<input type="checkbox"/> Neighborhoods that look mostly like they do right now
<input type="checkbox"/> A variety of types of housing	<input type="checkbox"/> What did we miss?

YOUR OPINION MATTERS!
To be notified about surveys on important topics, print your email address here.

Postcards posed questions about potential future priorities and asked citizens to select their top three priorities

connection to the City’s website. Posters were displayed at many of the same venues described above, including the Farmers Market, library, retail centers and City Hall.

- Project brochure. A project brochure provided basic project information and invited input in the planning process. The brochure was used at multiple venues.

“Big ideas” from each draft element were described on a series of posters displayed at various venues and events

Additional information about some of these outreach activities can be found in the City of Sammamish Community Profile (2014).

SAMMAMISH COMPREHENSIVE PLAN REWRITE LAND USE draft element

The City of Sammamish is looking to the future through our Comprehensive Plan. We are preparing new chapters to guide decisions on land use, transportation, housing, capital facilities and other important areas. As we work on these different subjects, we would like your feedback!

This poster describes the major themes of the Land Use Element. Themes that focus on sustainability and healthy communities are indicated with this icon. Please see links to the complete Element and contact information at the bottom of this poster.

Provide for planned population & employment growth

Establish land use designations, densities and intensities that will provide for planned growth while maintaining the City's character. Propose land use designations, are largely the same as established in the current Comprehensive Plan.

Maintain and enhance community character

Preserve and enhance the quality and character of the City's residential neighborhoods, ensure that public facilities support and strengthen community character, maintain a harmonious relationship with the natural environment, provide a sense of place through complementary and compatible development character.

Promote a healthy community

Support a land use pattern that promotes community health through opportunities for walking and bicycling, provides access to healthy foods and promotes a sense of community.

What do you think? Interested in more?

Do you agree with these ideas? What else would you suggest? Would you like more information?

Please see the complete Draft Land Use Element at <http://www.sammamish.com/development/comprehensiveplanrewrite> to share your thoughts and find more information about the Comprehensive Plan Review.

SAMMAMISH2035
Sammamish2035@sammamish.wa.gov

City of Sammamish, Community Development Department
801 228th Avenue SE, Sammamish, WA, 98075
Sign up for Comprehensive Plan Alerts: [Sign Up](#)
Visit the City's homepage and click [here](#)

SAMMAMISH COMPREHENSIVE PLAN REWRITE ENVIRONMENT & CONSERVATION draft element

Over the past year, the City of Sammamish has been working on updating the Comprehensive Plan to guide decisions on land use, transportation, housing, capital facilities, and other important areas. The Planning Commission is getting ready to make their recommendation to the City Council on the Draft Plan. Your feedback is invited!

This poster describes the major themes of the Environment and Conservation Element. Each major theme focuses on sustainability and healthy communities, as indicated with this icon. Please see links to the complete Element and contact information at the bottom of this poster.

Serve as a leader in environmental stewardship

Promote an integrated approach to protect and enhance the natural environment, work in coordination with others to enhance the environment, promote and lead education and improvement programs, and work to ensure the health and well-being of the community being impacted.

Protect people, property & the environment from current & future hazards

Minimize risk to people, property and the environment through limits to development in hazard areas and measures to enhance risk, such as restoration of existing vegetation and enhancement of flood storage and conveyance functions. Consider future hazards, such as impacts of climate change and act as a regional leader in promoting community resiliency through climate change adaptation strategies.

Protect & enhance the quality of our natural environment

Preserve, protect and enhance all aspects of the natural environment, including wetland areas, plant and animal habitat, water quality and quantity, and air quality. Preserve and enhance the City's tree canopy. Support measures to increase the sustainability and efficiency of building practices.

What do you think? Interested in more?

Do you agree with these ideas? What else would you suggest? Would you like more information?

Please see the complete Draft Environment and Conservation Element at <http://www.sammamish.com/development/comprehensiveplanrewrite> to share your thoughts and find more information about the Comprehensive Plan Review.

SAMMAMISH2035
Sammamish2035@sammamish.wa.gov

City of Sammamish, Community Development Department
801 228th Avenue SE, Sammamish, WA, 98075
Sign up for Comprehensive Plan Alerts: [Sign Up](#)
Visit the City's homepage and click [here](#)

SAMMAMISH COMPREHENSIVE PLAN REWRITE HOUSING draft element

Over the past year, the City of Sammamish has been working on updating the Comprehensive Plan to guide decisions on land use, transportation, housing, capital facilities, and other important areas. The Planning Commission is getting ready to make their recommendation to the City Council on the Draft Plan. Your feedback is invited!

This poster describes the major themes of the Draft Housing Element. Themes that focus on sustainability and healthy communities are indicated with this icon. Please see links to the complete Element and contact information at the bottom of this poster.

Promote attractive & vibrant neighborhoods

Make sure that new development is compatible with neighborhood character and support investment in neighborhoods to preserve character.

Make sure our residential areas can accommodate planned future growth

Provide for a variety of residential densities, including mixed use in the town center, smaller housing types, accessory dwelling units, infill development, and energy efficient housing choices.

Provide for a range of housing opportunities

Provide incentives and other measures to support a range of affordable housing, ownership and rental opportunities and housing for people with special needs.

What do you think? Interested in more?

Do you agree with these ideas? What else would you suggest? Would you like more information?

Please see the complete Draft Housing Element at <http://www.sammamish.com/development/comprehensiveplanrewrite> to share your thoughts and find more information about the Comprehensive Plan Review.

SAMMAMISH2035
Sammamish2035@sammamish.wa.gov

City of Sammamish, Community Development Department
801 228th Avenue SE, Sammamish, WA, 98075
Sign up for Comprehensive Plan Alerts: [Sign Up](#)
Visit the City's homepage and click [here](#)

SAMMAMISH COMPREHENSIVE PLAN REWRITE UTILITIES draft element

Over the past year, the City of Sammamish has been working on updating the Comprehensive Plan to guide decisions on land use, transportation, housing, capital facilities, and other important areas. The Planning Commission is getting ready to make their recommendation to the City Council on the Draft Plan. Your feedback is invited!

This poster describes the major themes of the Draft Utilities Element. Themes that focus on sustainability and healthy communities are indicated with this icon. Please see links to the complete Element and contact information at the bottom of this poster.

Support utility services to accommodate existing & projected growth

Support timely maintenance and expansion of services to meet anticipated demand for services, coordinate services with the City's Comprehensive Plan.

Encourage utility service design that is consistent with community character

Prevent the undergrounding of utilities where feasible, encourage aesthetically compatible design, and minimize visual impacts of accommodation facilities.

Encourage measures to conserve energy & protect water quality

Promote barriers to the use of alternative energy sources, encourage opportunities to become more energy independent, support renewable energy production, promote water conservation and support a long-term strategy for phased conversion to sanitary sewers.

What do you think? Interested in more?

Do you agree with these ideas? What else would you suggest? Would you like more information?

Please see the complete Draft Utilities Element at <http://www.sammamish.com/development/comprehensiveplanrewrite> to share your thoughts and find more information about the Comprehensive Plan Review.

SAMMAMISH2035
Sammamish2035@sammamish.wa.gov

City of Sammamish, Community Development Department
801 228th Avenue SE, Sammamish, WA, 98075
Sign up for Comprehensive Plan Alerts: [Sign Up](#)
Visit the City's homepage and click [here](#)

SAMMAMISH COMPREHENSIVE PLAN REWRITE SHORELINE & PROS draft elements

Over the past year, the City of Sammamish has been working on updating the Comprehensive Plan to guide decisions on land use, transportation, housing, capital facilities, and other important areas. The Planning Commission is getting ready to make their recommendation to the City Council on the Draft Plan. Your feedback is invited!

This poster describes the Shoreline and Parks, Recreation and Open Space Draft Elements. These elements incorporate existing adopted City policy for shoreline areas and parks and changes to the policies are not anticipated. Each Element is briefly summarized below. Both elements focus on sustainability and healthy communities, as indicated with this icon.

Shoreline Element

The Shoreline Element is based on the City's Shoreline Master Program which was prepared in a multi-year process that includes significant public review and was ultimately adopted by the City and approved by the Washington Department of Ecology.

The Element provides long range policy guidance and supports effective reasonable regulations for development, use and restoration of Sammamish's shorelines. It applies to the shoreline area generally consisting of 200 feet above the shoreline edge, around Lake Sammamish, Pink Lake and Beaver Lake. Shoreline goals and policies address archaeological, historical and cultural resources, recreational public access, public recreation, land uses, shoreline restoration and enhancement, transportation and public facilities.

Parks, Recreation & Open Space Element

The goals and objectives for the Draft Element are based on the City's Parks, Recreation and Open Space (PROS) Plan which was adopted in 2012. Following an extensive public review process, consistent with the City's adopted PROS Plan, the Draft Element addresses parks, recreation and open space, athletic fields, and recreation facilities. The goals and objectives are intended to promote high quality facilities accessible to all city residents.

Interested in more?

Please see the complete Draft Shoreline and Parks, Recreation and Open Space elements at <http://www.sammamish.com/development/comprehensiveplanrewrite> to share your thoughts and find more information about the Comprehensive Plan Review.

SAMMAMISH2035
Sammamish2035@sammamish.wa.gov

City of Sammamish, Community Development Department
801 228th Avenue SE, Sammamish, WA, 98075
Sign up for Comprehensive Plan Alerts: [Sign Up](#)
Visit the City's homepage and click [here](#)

SAMMAMISH COMPREHENSIVE PLAN REWRITE Health and SUSTAINABILITY draft framework

Over the past year, the City of Sammamish has been working on updating the Comprehensive Plan to guide decisions on land use, transportation, housing, capital facilities, and other important areas. The Planning Commission is getting ready to make their recommendation to the City Council on the Draft Plan. Your feedback is invited!

The Health & Sustainability Framework is not a separate element of the Comprehensive Plan. Instead, it provides a framework of principles that guide goals and policies and ensure that sustainability is considered throughout the entire Comprehensive Plan. This poster describes the major themes of the Framework. Each major theme focuses on sustainability and healthy communities, as indicated with this icon. Please see links to the complete Framework and contact information at the bottom of this poster.

Create & protect healthy habitat

Include goals and policies that protect the natural environment. Consider wildlife habitat, energy conservation, clean water, water quality and quantity and other elements of the natural environment.

Provide a culture of inclusiveness & citizen involvement

Provide for inviting community gathering spaces, effective outreach methods, and a connected land use pattern.

Support a local economy that provides economic growth opportunities

Support sustainable economic vitality through programs to promote community businesses, innovation and environmentally responsible practices.

What do you think? Interested in more?

Do you agree with these ideas? What else would you suggest? Would you like more information?

Please see the complete Draft Health & Sustainability Framework at <http://www.sammamish.com/development/comprehensiveplanrewrite> to share your thoughts and find more information about the Comprehensive Plan Review.

SAMMAMISH2035
Sammamish2035@sammamish.wa.gov

City of Sammamish, Community Development Department
801 228th Avenue SE, Sammamish, WA, 98075
Sign up for Comprehensive Plan Alerts: [Sign Up](#)
Visit the City's homepage and click [here](#)



Project
brochure

2. **Speaker's Bureau.** Using content based on the traveling exhibit, the speaker's bureau was used to present information about the Comprehensive Plan rewrite at regular meetings of boards, commissions and community organizations. The presentations were an important opportunity for providing accurate and timely information to members of the community. Materials used at speaking events included a slide presentation and project brochure.



3. **Web page.** The City's web page was used to describe the Comprehensive Plan rewrite purpose, process and opportunities to participate. Background materials and draft comprehensive plan elements were posted on an ongoing basis and comments were invited. Web visitors could also sign up on an email alert list.

4. **Email alerts.** Email alerts containing project updates, alerting citizens of major events, and inviting comment on draft work products were sent out on an ongoing basis over the course of the project. An estimated 1,000 email addresses are included on this list.

5. **On-line Survey.** The website was used to survey citizens about a future vision statement and key issues/concerns related to each element of the comprehensive plan. Questions were timed so that responses could be provided to the Planning Commission as they were reviewing the element that pertained to the questions. Survey questions were not designed as a statistically significant research tool, but just as another indication of public opinion and opportunity for interested parties to engage in the process.



A large map of the city invited passers-by to find their home on the map at popular public venues to build awareness of the comprehensive plan and encourage community engagement

Youth provide feedback
about their vision for
Sammamish in the future



6. Outreach to Schools. City staff met with middle and senior high school students at four different schools and the City's Youth Board to explain the planning process to students and solicit feedback on student perspective on important City issues and future vision. At each session, staff led an interactive exercise designed to identify the issues that were most important to the students.

7. Community Open Houses. Informal and interactive open houses were held at two different times to invite comments on preliminary plan goals and policies. Information about the key issues and direction of the plan were displayed and participants were invited to provide verbal or written comment. Invitations to these workshops were sent to the email alert list, printed in the City newsletter, posted to the website and printed in the newspaper.

8. Planning Commission meetings. Between late 2013 and adoption of the Comprehensive Plan in 2015, the Planning Commission met approximately 30 times to review information, discuss policy issues and make recommendations on policy direction. All meetings were open to the public and public comment was invited. Planning Commission meeting materials were also posted on the City's website.

Framework for Citizen Participation

Going forward, active citizen participation remains a vital component of the City's planning process. The framework for citizen participation is shown below.

- CP.1 Encourage and facilitate user-friendly public participation in community decision-making.
- CP.2 Consider the interests of the entire community in making decisions.
- CP.3 Encourage and emphasize open communication between all parties when considering planning issues.
- CP.4 Incorporate a variety of public outreach approaches to oversee major amendments to the Comprehensive Plan.
- CP.5 Share information with the public about planning and development processes, how they interrelate, and how to provide effective input.
- CP.6 Consider the interests of present and future residents over the length of the planning period when making decisions.

Amending the Comprehensive Plan

Comprehensive plans are dynamic living documents that require regular review and revision to ensure that they respond to changing needs of the community and respond to new federal or state law.

The city's Development Code and Town Center Development Code (Sammamish Municipal Code Title 21A and 21B) is a major implementation tool for the Comprehensive Plan. The Development Code specifies the kinds of uses that are permitted in each zone and sets standards for all new development and re-development. Other parts of the Sammamish Municipal Code – Land Division, Surface Water Management, Public Works and Transportation, among others – play an important role in implementing the Comprehensive Plan.

The Comprehensive Plan also guides the location and sizing of infrastructure and other capital facilities, the placement of facility enhancements (decorative street lighting, for example) that affect community character, and the implementation of operational activities (recreational and cultural programming, for example) that affect community health, safety and character.

Visit www.sammamish.us for the most current version of the City's maps and GIS data.

As noted before, comprehensive plan goals and policies provide guidance, but are intentionally written broadly to allow for flexibility in their future implementation. The City's approach to review and amendment to the Comprehensive Plan is described in the goals and policies below.

Framework for Implementing and Amending the Comprehensive Plan

Monitoring key indicators will allow the City to track progress on Comprehensive Plan implementation and effectiveness of policies in order to ensure that policies remain current and relevant.

- IA.1 Consistent with GMA requirements, develop and document a strategy for implementation of the Comprehensive Plan, including a proposed schedule and priorities.
- IA.2 Maintain the Comprehensive Plan to ensure that changing conditions, including changes in the community and changes to regional, state and federal policies and regulations are monitored and reflected in the plan.
- IA.3 Consider proposed Comprehensive Plan Amendments concurrently so that the cumulative effect of the proposals can be determined. The City may consider some amendments outside of the normal review cycle as authorized in the Growth Management Act. All proposed Comprehensive Plan Amendments should include the following elements:
 - a A detailed statement of what is proposed to be changed and why,
 - b A statement of anticipated impacts of the change, including geographic area affected and issues presented,
 - c A demonstration of why existing Comprehensive Plan guidance should not continue in effect or why existing criteria no longer apply,
 - d A statement of how the amendment complies with the Growth Management Act's goals and specific requirements,
 - e A statement of how the amendment complies with regional and/or county goals and policies,
 - f A statement of how the amendment complies with the Sammamish Vision Statement,
 - g A statement of how functional plans and capital improvement programs support the change, and
 - h Public review of the recommended change, necessary implementation (including area zoning if appropriate) and alternatives.

- IA.4 Ensure proposed Comprehensive Plan policy amendments are accompanied by any related and required implementing actions.
- IA.5 Implement a public participation strategy appropriate for each Comprehensive Plan amendment cycle, as established in the Citizen Participation Framework
- IA.6 Ensure that the Comprehensive Plan, development regulations, City and other agency functional plans and budgets are mutually consistent and reinforce each other.

