

# Operator Manual



**CROWN**

**PTH**

# Protect Yourself

## BEFORE YOU USE THE TRUCK

Remove all packing material and inspect the truck for shipping damage. File any claim with the delivery carrier immediately.

## WARNING

Do not operate this truck until you have been trained and authorized by your employer. Inspect your truck. Make sure it is in working order. Read and obey all warnings and instructions located on the truck and in this Operator Manual.

It is recommended to only transport loads that are placed on pallets or skids.

Do not travel with forks (with load) above 200 mm (8 inches).

**This truck does not have brakes. A truck with a load could be hard to stop. In an emergency quickly lower the load to the floor to help you stop the truck.**

Keep arms, hands, legs and feet away from the load, linkages, and all moving parts.

## CAUTION

No riders and No riding. Your pallet truck is not a scooter.

Never overload your truck.

Do not move your truck over objects on the floor, or over holes that could cause the truck to tip.

Be careful on dock boards and around docks or other dropoffs. Make sure you are safe. Don't use your pallet truck on a grade, ramp or incline.

Make sure your load is evenly distributed and centered over the forks. **Never handle unstable or unsafe loads.**

Make certain elevators and dock boards have enough capacity to carry the truck, the load and you.

Do not operate the PTHS0 PS in any area where there is a risk of explosion.

### Note:

Pull your truck rather than push it. You'll have better control.

Do not pick up a load with one fork or just the tips of the forks.

Before lowering make certain the area under the load is clear.

Avoid sudden movements.

## 1 Protect Yourself

# Your Hand Pallet Scissor Lift Truck

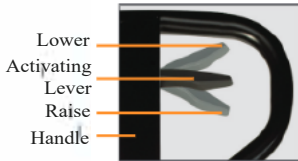
## INSPECT YOUR TRUCK BEFORE STARTING WORK

- Check that the forks and scissors are secure and not bent, cracked or badly worn.  
**Keep your hands and feet away from all moving parts.**
- See that all wheels are in good condition.
- Make certain the handle and raise/lower lever work smoothly.



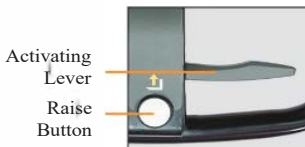
Additional checks for the PTHS0 PS:

- Inspect for hydraulic leaks.
- Check hydraulic fluid level.
- Make certain the emergency disconnect button works.
- Check the battery, charger, and cables for wear or damage.



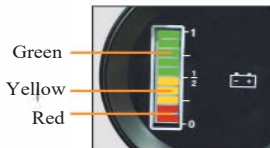
## OPERATING INSTRUCTIONS

- To raise, push the raise/lower lever to the lowest position. Pump the handle until the forks are at the desired height.
- To move the truck, place the lever in the neutral position. Do not travel with forks (with load) above 200 mm (8 inches).
- To lower, pull the lever to the highest position. The farther you move the lever, the faster the forks will lower.



## TO RAISE WITH POWER ASSIST (PTHS0PS)

- Lift the emergency disconnect button, push the raise/lower lever to the lowest position and press the raise button on the handle.
- Push the emergency disconnect button down if power raise does not work properly.



## BATTERY FUEL GAUGE

The top green light indicates the battery is fully charged.  
A flashing red light indicates the battery needs to be charged.  
Two flashing red lights indicate the battery is almost "empty" and power lift will not work.

## CHARGING THE BATTERY

- Make certain the outlet voltage is the same as specified on the data plate. Beware of electrical shock in wet or humid conditions.
- The charger will show an orange light while charging and a green light when fully charged.
- When you're not using your truck press the emergency disconnect button to reduce battery drain.



50 S • PS SERIES



New Bremen, Ohio 45869 U.S.A. © 2015 PF19419 Rev. 11/15 Printed in U.S.A.