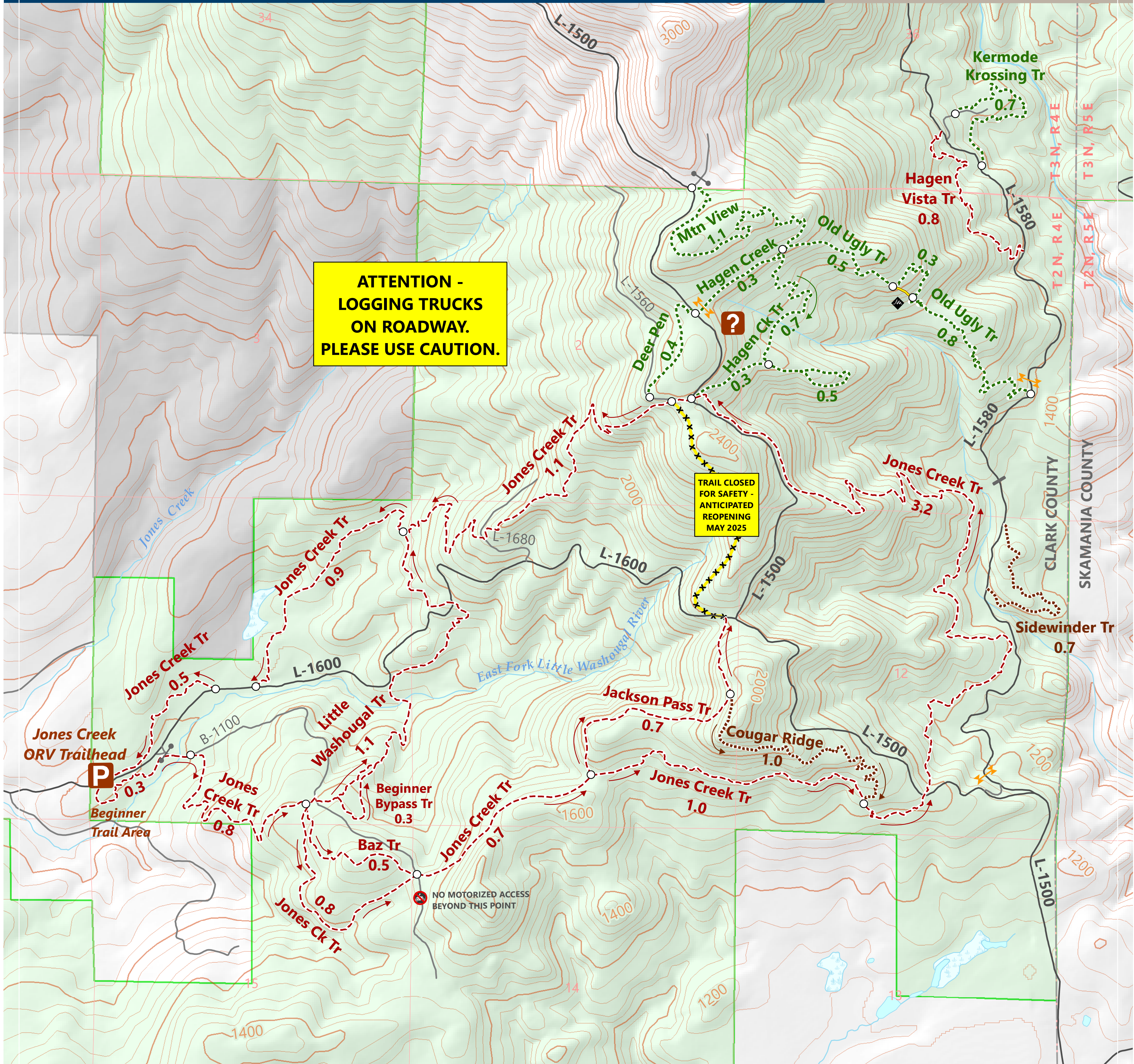
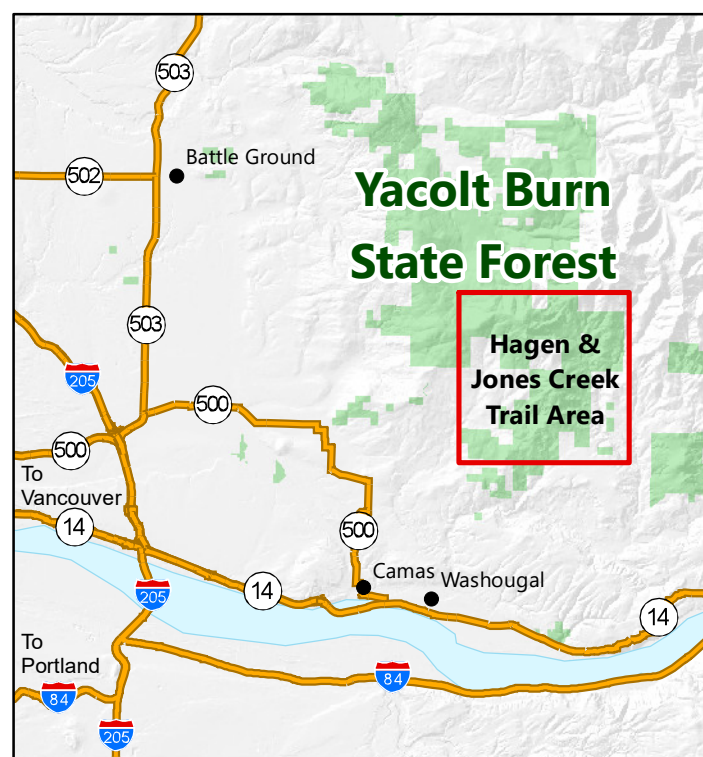


Jones Creek Trail System

Yacolt Burn State Forest Motorized Trails



0 1/4 1/2 1 Miles
1:12,000 Contour Interval 40 feet



- P Parking or Trailhead
 - ? Information
 - Challenge Trail
 - Mileage Marker
 - Road Block
 - Closed Gate
 - Seasonal Gate / 4x4 Filter
 - DNR-Managed Lands
 - Municipal or County Watershed
 - Temporary Trail Closure
 - 4x4/ATV/Motorcycle
 - ATV/Motorcycle
 - Motorcycle Only
 - Challenge Trail (4x4/ATV/Motorcycle)
- Other gates, not shown on the map, are normally open. However, they may be closed at any time to facilitate specific work projects.

Note to map users: Extreme care was used during compilation of this map to ensure accuracy. However, due to changes in ownership and the need to rely on outside sources of information, the Department of Natural Resources cannot accept responsibility for errors or omissions. Therefore, there are no warranties which accompany this material.



To Download Map:



dnr.wa.gov