





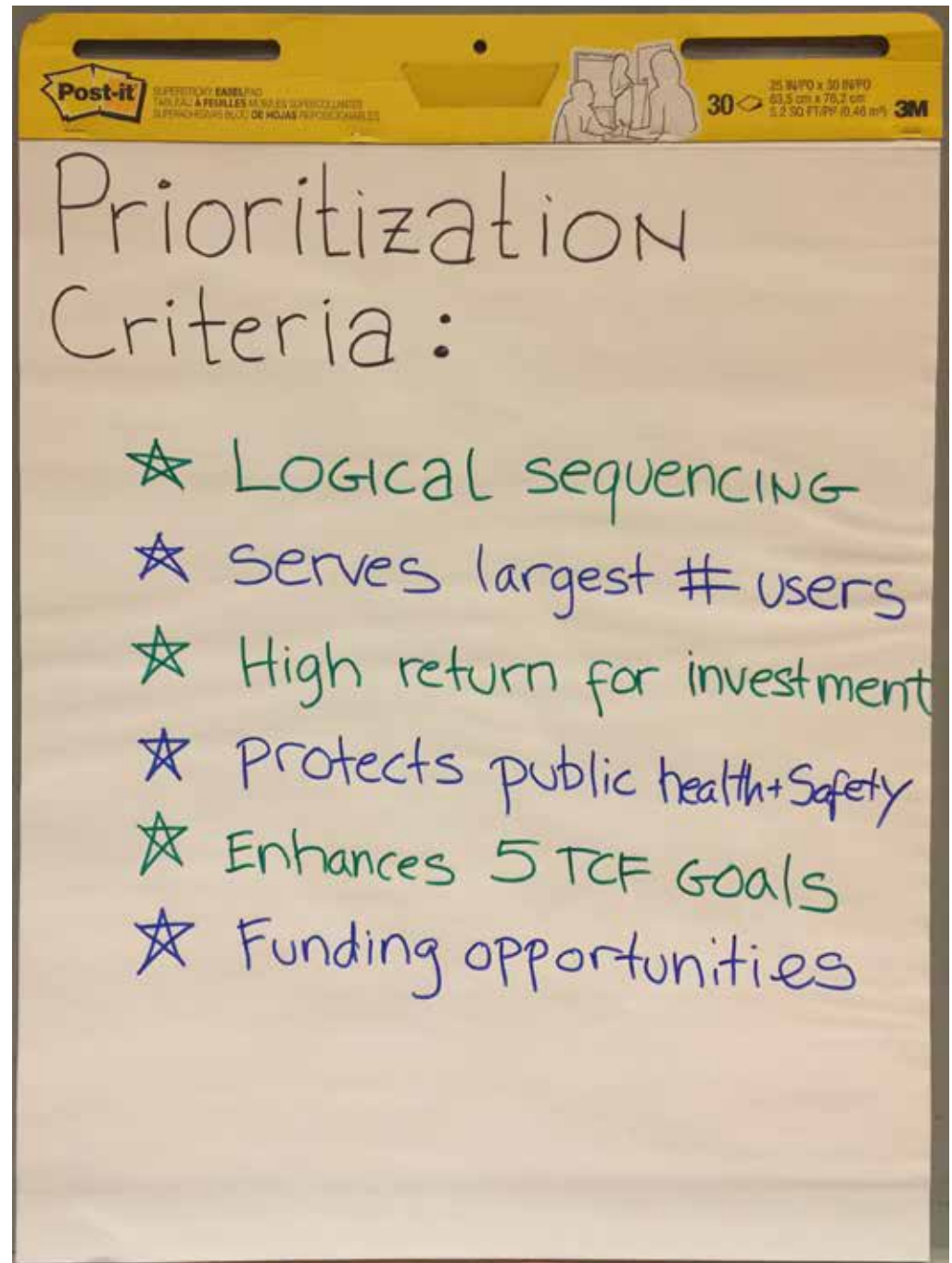
Teanaway Community Forest

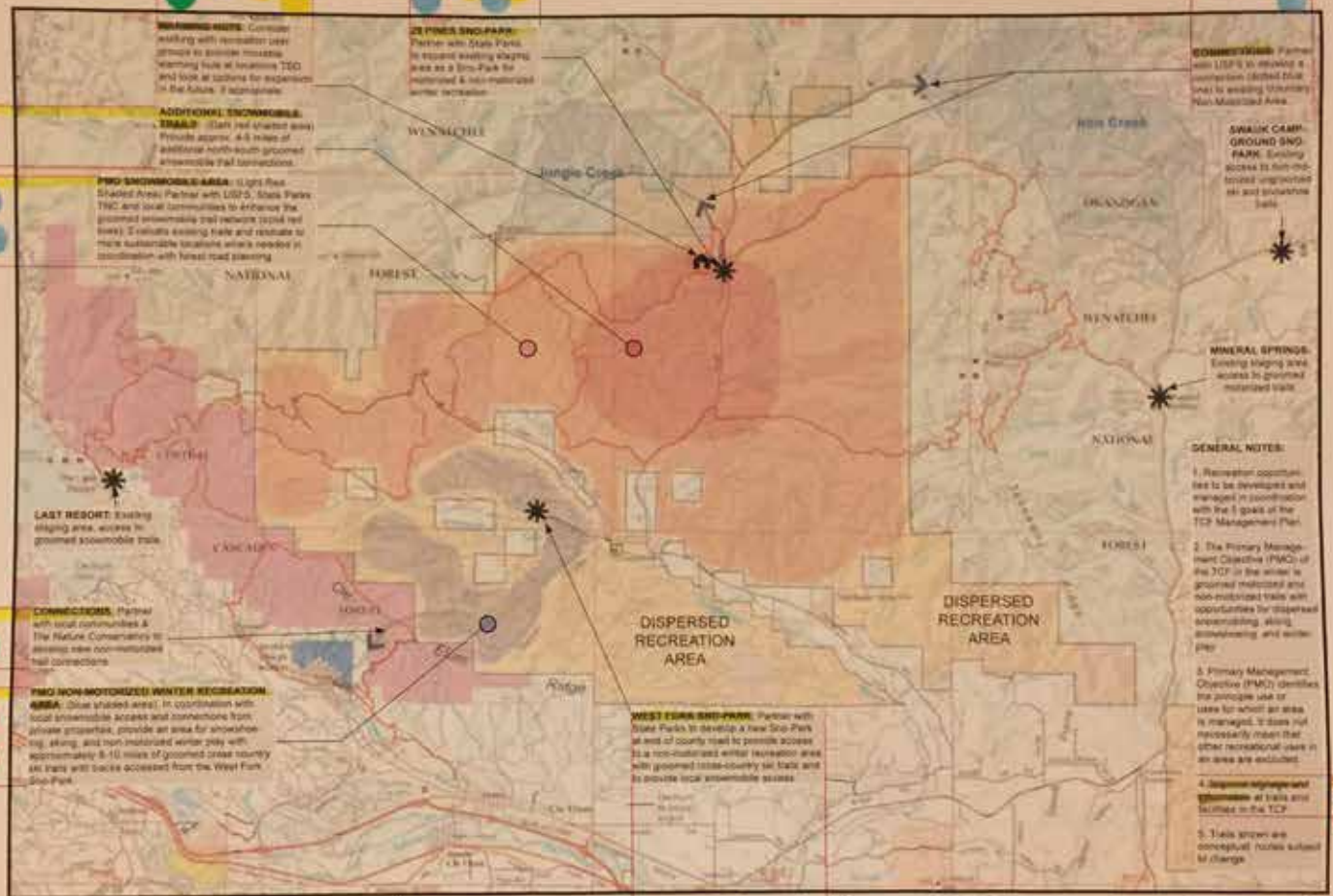
March 8, 2018 Meeting
Recreation Planning Committee

Prioritization DOT EXERCISE

(Winter and Summer Recreation)

-  Priority 1
-  Priority 2
-  Priority 3
-  Priority 4





**Teanaway Community Forest
Winter Recreation Concepts**
2008 2010 DRAFT TRAILS AND FACILITIES SHOWN
 ARE CONCEPTS FOR DISCUSSION PURPOSES ONLY

KEY

- PMO Snowmobile Area with groomed trails
- PMO Non-motorized winter recreation area with groomed cross-country ski trails
- Groomed snowmobile trails to be evaluated and resurveyed where needed
- Snowmobile trail sections to be resurveyed
- Non-motorized connections for skiing and snowshoeing

Winnatchee National Forest
 Consider working with recreation user groups to provide possible warming huts at locations TEO and look at options for expansion in the future. 2 snowshoes.

WEST FORK SNO-PARK
 Partner with State Parks to expand existing ski area as a Sno-Park for motorized & non-motorized winter recreation.

ADDITIONAL SNOWMOBILE TRAILS
 (Dark red shaded area)
 Trails approx. 4.5 miles of additional north-south groomed snowmobile trail connections.

PMO SNOWMOBILE AREA
 (Light Pink Shaded Area) Partner with USFS, State Parks, TNC and local communities to enhance the groomed snowmobile trail network (dark red lines). Evaluate existing trails and resurvey to mark sustainable locations where needed in coordination with forest road planning.

LAST RESORT
 Existing staging area, works to groomed snowmobile trails.

CONNECTIONS
 Partner with local communities & The Nature Conservancy to assess site opportunities and connections.

PMO NON-MOTORIZED WINTER RECREATION AREA
 (Blue shaded area). In coordination with local snowmobile access and connections from private properties, provide an area for snowshoeing, skiing, and non-motorized winter play with approximately 8-10 miles of groomed cross-country ski trails with access from the West Fork Sno-Park.

WEST FORK SNO-PARK
 Partner with State Parks to develop a New Sno-Park at end of county road to provide access to a non-motorized winter recreation area with groomed cross-country ski trails and to provide local snowmobile access.

CONNECTIONS
 Partner with USFS to develop a connection (dotted blue line) to existing (blue line) Non-Motorized Area.

SWAIK CAMP GROUND SNO-PARK
 Existing access to non-motorized groomed ski and snowshoe trails.

MINERAL SPRINGS
 Existing staging area access to groomed snowmobile trails.

- GENERAL NOTES:**
1. Recreation opportunities to be developed and managed in coordination with the 3 goals of the TCP Management Plan.
 2. The Primary Management Objective (PMO) of the TCP in the winter is groomed, motorized and non-motorized trails with opportunities for dispersed snowshoeing and winter play.
 3. Primary Management Objective (PMO) identifies the priority use or uses for which an area is managed. It does not necessarily mean that other recreational uses in an area are excluded.
 4. Dispersed recreational opportunities at trails and facilities in the TCP.
 5. Trails shown are conceptual routes subject to change.



PRIORITIZATION KEY

- PHASE 1 - 7 stickers
- PHASE 2 - 7 stickers
- PHASE 3 - 7 stickers
- PHASE 4 - 7 stickers
- Blank - Long term

30 total trails
 Summer + Winter

**MARCH 8 COMMITTEE MEETING
 DOT EXERCISE
 (Winter Recreation)**

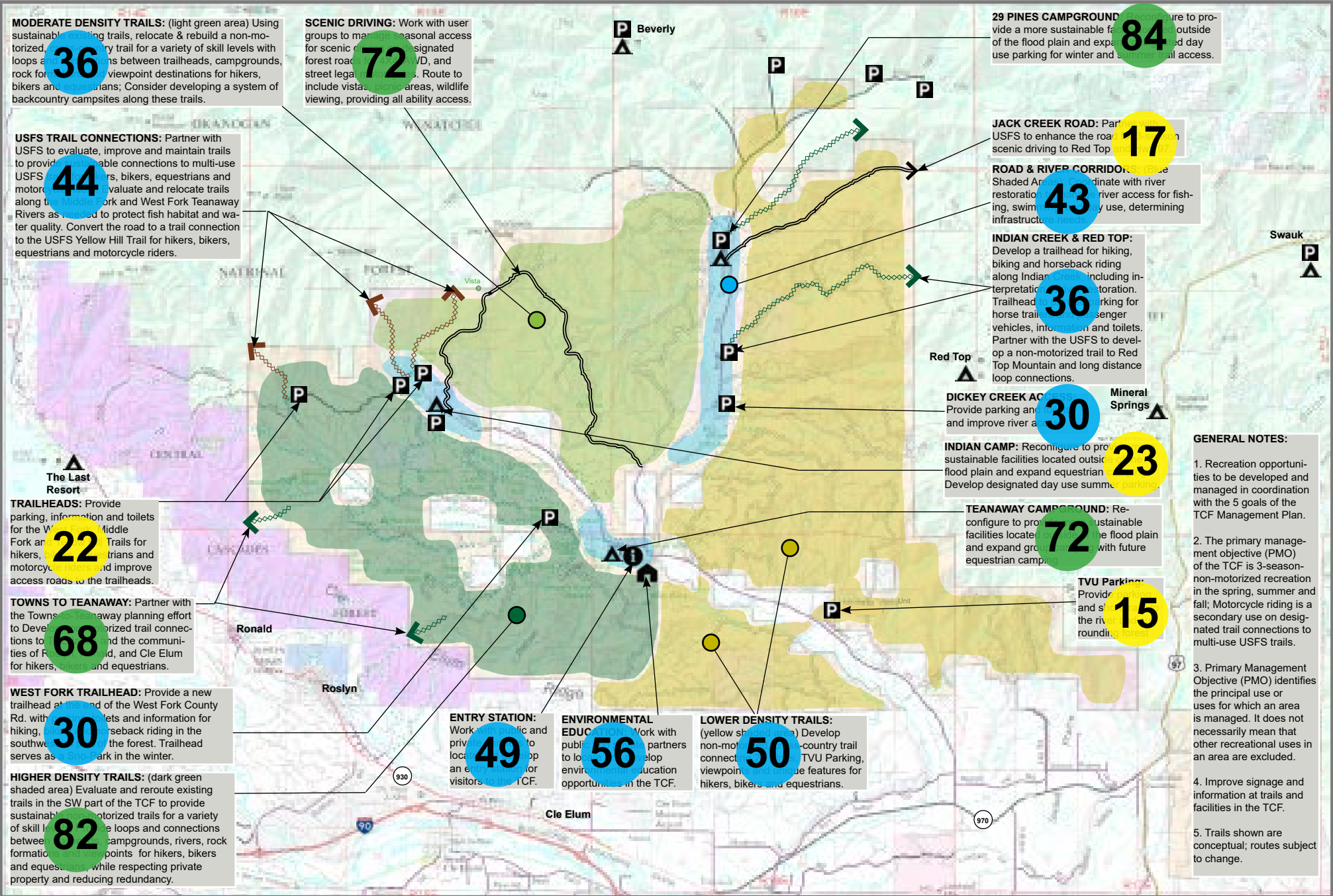
Dot Exercise - SCORING

March 8, 2018 Committee Meeting

Project	Red Dots (8 points)	No. Dots	Red Sub T	Green Dots (4 points)	No. Dots	Green Sub T	Blue Dots (2 points)	No. Dots	Blue Sub T	Yellow Dots (1 point)	No. Dots	Yellow Sub T	Total Points	Phase
Summer Map														
Moderate Density Trails	8	1	8	4	4	16	2	5	10	1	2	2	36	II
USFS Trail connections	8	4	32	4	0	0	2	6	12	1	0	0	44	II
USFS Trail Trailheads	8	1	8	4	2	8	2	3	6	1	0	0	22	III
Towns to Teanaway (Summer)	8	7	56	4	3	12	2	0	0	1	0	0	68	I
West Fork Trailhead	8	1	8	4	5	20	2	1	2	1	0	0	30	II
Higher Density Trails	8	9	72	4	2	8	2	1	2	1	0	0	82	I
Entry Station	8	5	40	4	2	8	2	0	0	1	1	1	49	II
Environmental Education	8	4	32	4	3	12	2	5	10	1	2	2	56	II
Lower Density Trails	8	0	0	4	9	36	2	5	10	1	4	4	50	II
TVU Parking	8	0	0	4	1	4	2	3	6	1	5	5	15	III
Teanaway Campground	8	9	72	4	0	0	2	0	0	1	0	0	72	I
Indian Camp	8	1	8	4	3	12	2	0	0	1	3	3	23	III
Dickey Creek Access	8	1	8	4	5	20	2	0	0	1	2	2	30	II
Indian Creek & Red Top	8	1	8	4	4	16	2	6	12	1	0	0	36	II
Road & River corridors	8	3	24	4	3	12	2	3	6	1	1	1	43	II
Jack Creek Road	8	1	8	4	1	4	2	2	4	1	1	1	17	III
29 Pines Campground	8	10	80	4	1	4	2	0	0	1	0	0	84	I
Scenic Driving Loops	8	5	40	4	4	16	2	4	8	1	8	8	72	I
Winter Map														
Additional Snowmobile Trails	8	1	8	4	1	4	2	3	6	1	1	1	19	III
PMO Snowmobile Area	8	0	0	4	0	0	2	7	14	1	4	4	18	III
Towns to Teanaway (Non-Moto Winter)	8	0	0	4	5	20	2	1	2	1	1	1	23	III
PMO Non-Motorized Winter Area	8	5	40	4	3	12	2	2	4	1	1	1	57	I
West Fork Sno-Park	8	5	40	4	4	16	2	3	6	1	2	2	64	I
Information & Signs	8	3	24	4	8	32	2	1	2	1	1	1	59	I
Connections to USFS Non-Moto Areas	8	0	0	4	4	16	2	2	4	1	7	7	27	III
29 Pines Sno-Park	8	9	72	4	0	0	2	3	6	1	3	3	81	I
Warming Huts	8	1	8	4	5	20	2	3	6	1	8	8	42	II

Note: 4305 Road Connection, Jack Ridge Trail, and Liars Prairie Connection have been taken off of projects list and map because of feasibility and easement issues that were discussed during the meeting.

9 Phase I
10 Phase II
8 Phase III



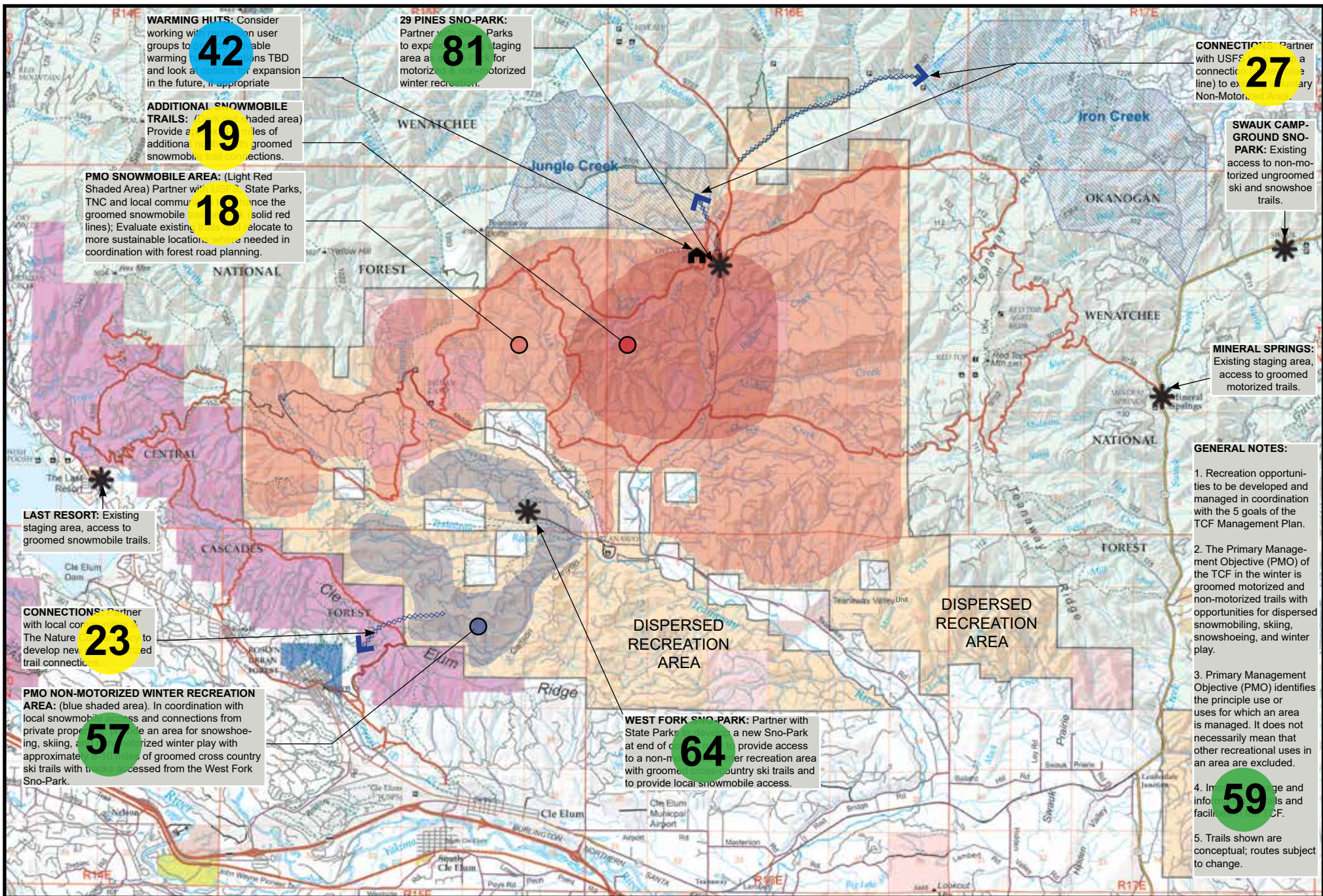
March 8, 2018 Committee Meeting
DOT EXERCISE RESULTS
 POINTS AND PHASING
 Summer Recreation

KEY

- Non-motorized trails for hiking, biking and horseback riding
- Multi-Use trails for hiking, biking, horse & motorcycles
- Scenic driving roads, seasonal access
- Higher Density Trails
- Moderate Density Trails
- Lower Density Trails
- River and Road Corridor

Phase 1 **Phase 2** **Phase 3**

Phase 1: Green circle
 Phase 2: Blue circle
 Phase 3: Yellow circle



March 8, 2018 Committee Meeting
DOT EXERCISE RESULTS
 POINTS AND PHASING
 Winter Recreation

KEY

- PMO Snowmobile Area with groomed trails.
- PMO Non-motorized winter recreation area with groomed cross-country ski trails.
- Groomed snowmobile trails to be evaluated and rerouted where needed
- Snowmobile trail sections to be rerouted
- Non-motorized connections for skiing and snow shoeing

Phase 1 **Phase 2** **Phase 3**

Green circle, Blue circle, Yellow circle

