

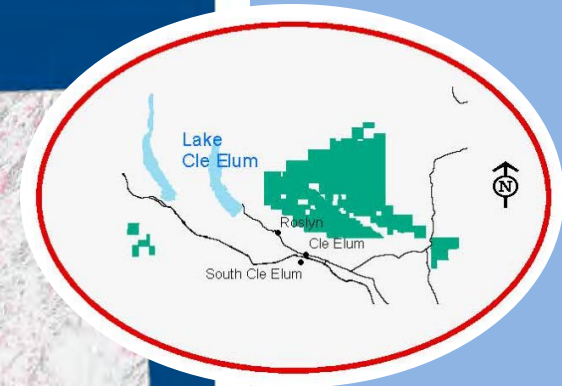
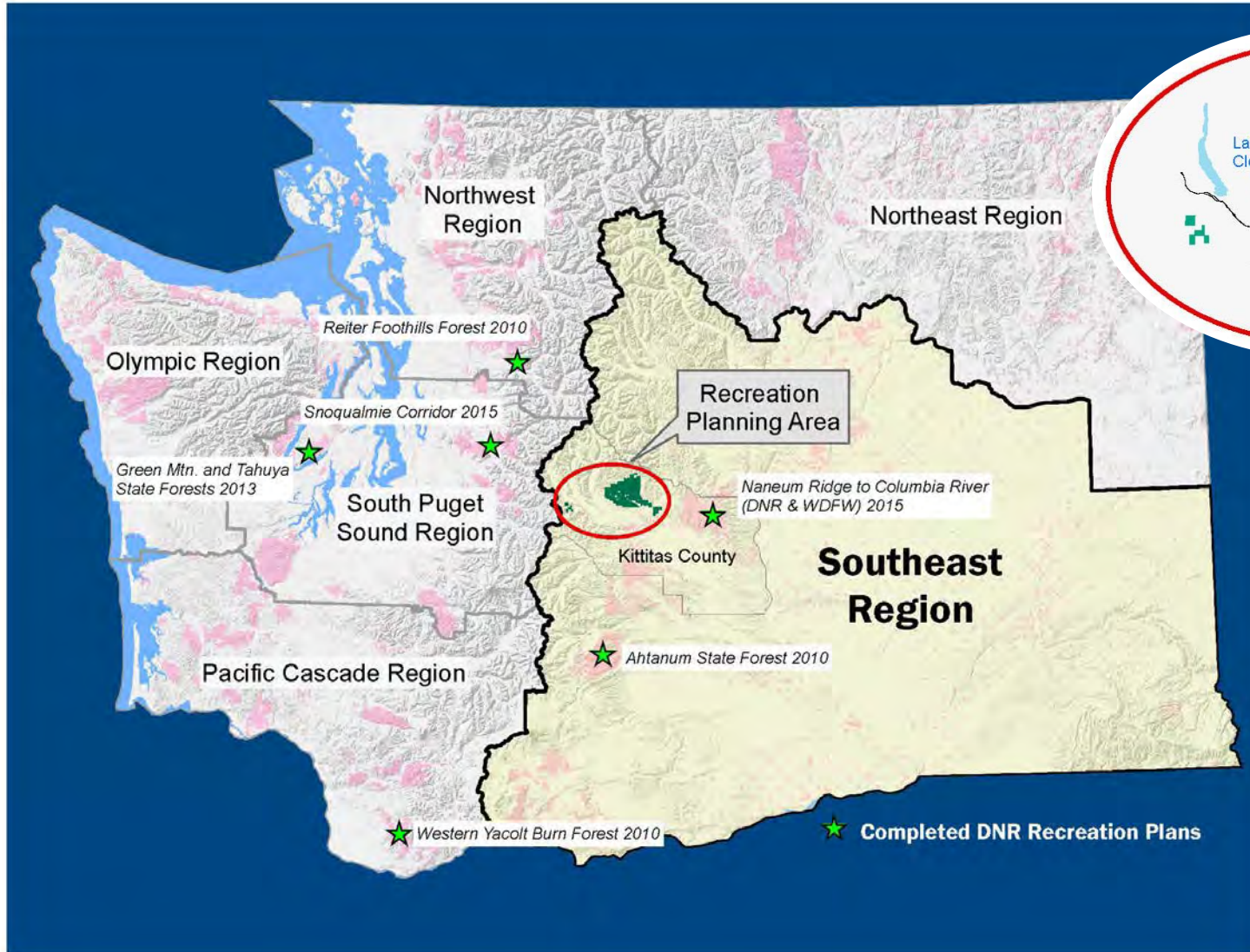
Teanaway Community Forest Recreation Planning



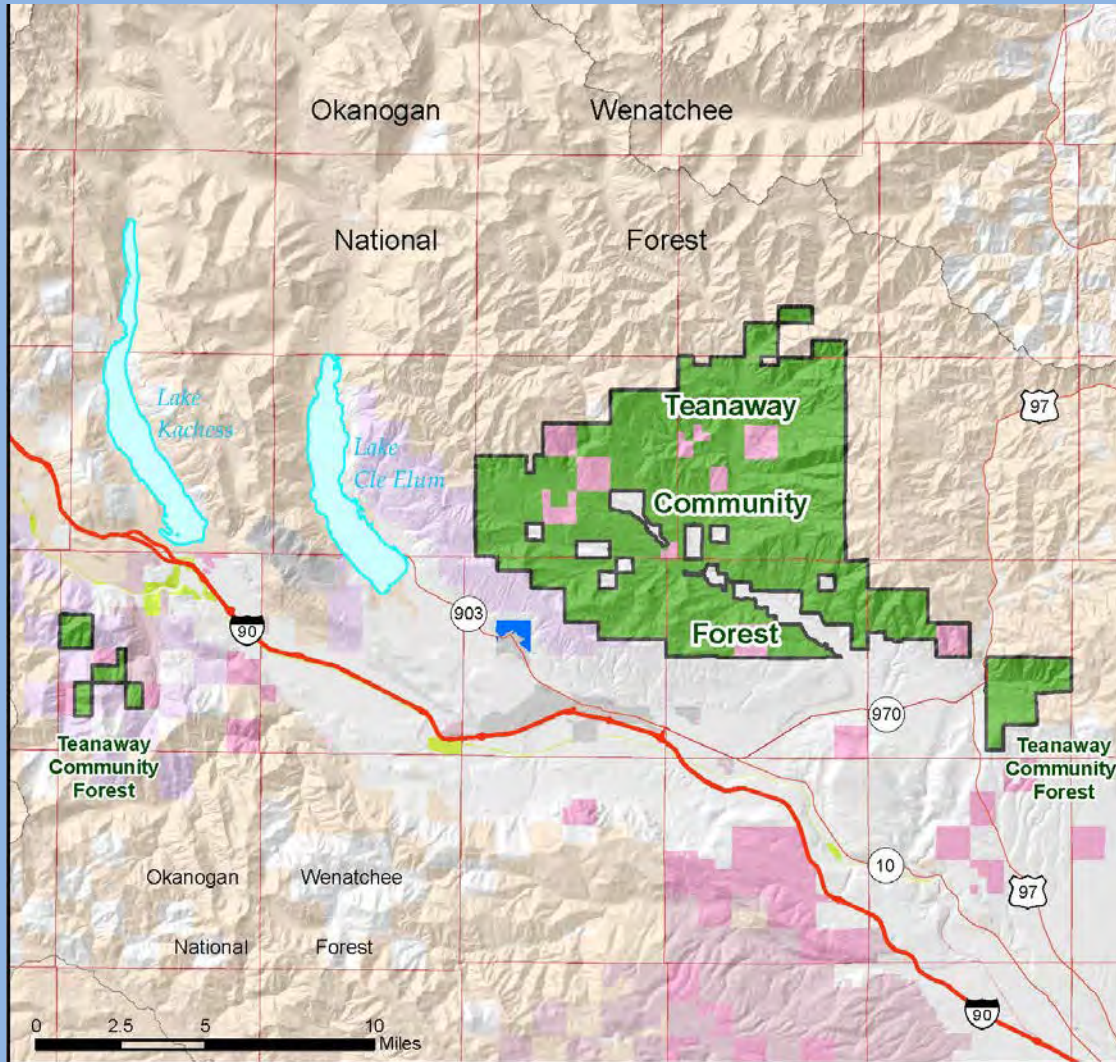
Context of the Recreation Planning Area



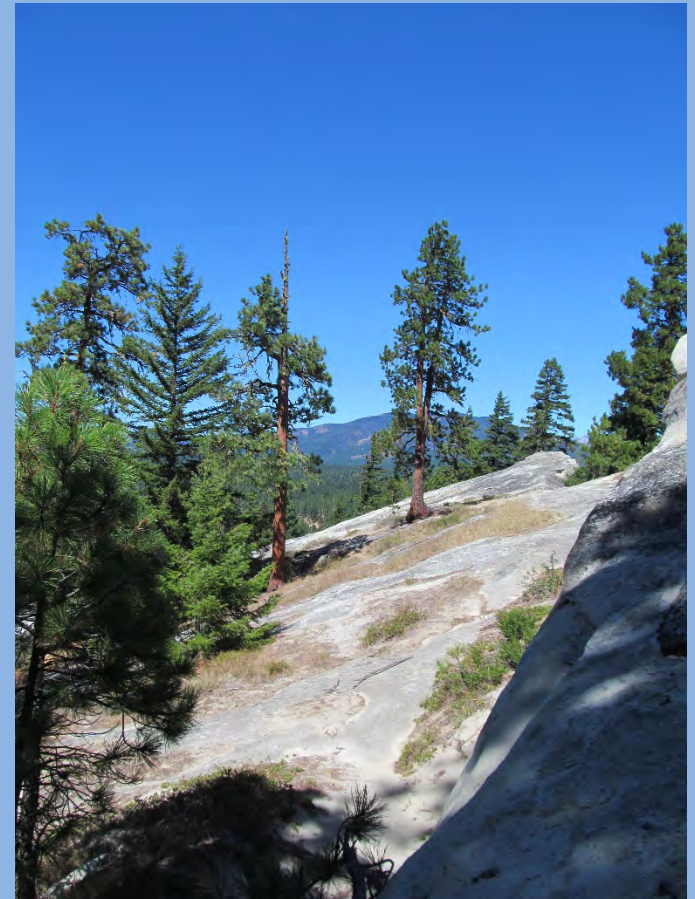
Teanaway Community Forest



Planning Area Map

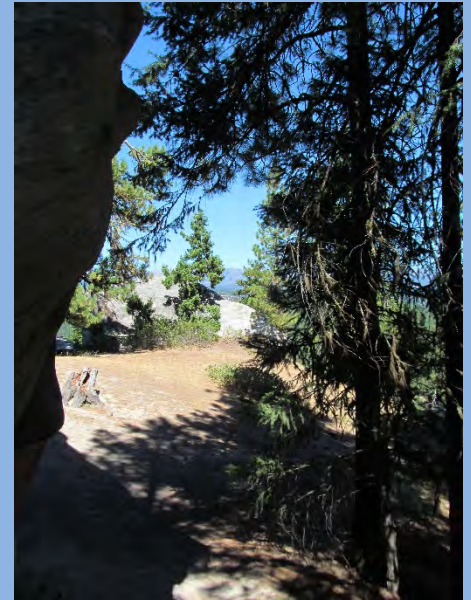


Overview of the Recreation Planning Process



Purpose of Planning

- Develop objectives for managing recreation for next 10-15 years
- Determine what types of recreation will be provided in the Community Forest and where
- Identify opportunities for connections across the landscape
- Identify partnerships and volunteer opportunities
- Establish priorities for implementing the plan



Management Plan

Recreation Objectives

- Develop a recreation plan for the forest
- Evaluate motorcycle use within the recreation planning process
- Provide a sustainable network of safe, enjoyable recreational trails
- Provide recreation opportunities and facilities that are consistent with watershed protection
- Maintain existing partnerships and establish new collaborations between public agencies, user groups, and citizen volunteers
- Establish a consistent enforcement and education presence



Planning Process

- Seven Phases
- TCF Advisory Committee
- Land Suitability
- Typical process = ~ 24 months

Phase 1	PRE-PLANNING Determine the need and scope, project team, stakeholder involvement plan, and data collection needs
Phase 2	INVENTORY/ LAND SUITABILITY Determine the land suitability and planning context for the project
Phase 3	RECREATION INVENTORY/ PUBLIC INVOLVEMENT Determine public issues and concerns, hold public meetings, collect recreation field data, user surveys
Phase 4	ASSESSMENT Determine the 'BIG IDEA', or management concept for the planning area (what are we going to do where?)
Phase 5	ALTERNATIVE(S) Determine and describe the preferred alternative for the project (how and to what degree we provide recreation?)
Phase 6	SEPA & COMMUNICATIONS SEPA is conducted, plan is edited and formatted for publication
Phase 7	ADOPTION Plan is adopted by the agency

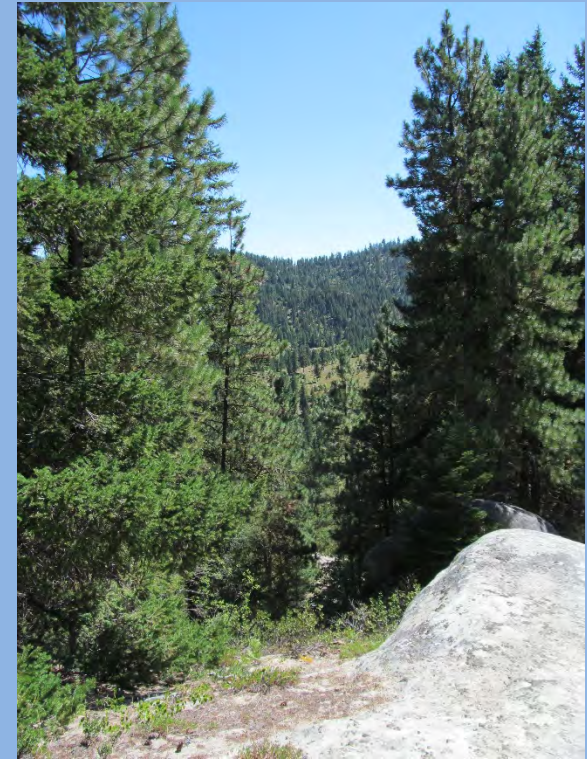
Planning Goals

Teaway Specific:

- To maintain and where possible expand recreational opportunities consistent with watershed protection, for activities such as hiking, fishing, hunting, horseback riding, camping, birding, and snowmobiling.

General:

- Resource protection
- High-quality recreation experience
- Public safety



Typical Planning Process

Recreation Planning Process		Year 1 Months 1-6	Year 1 Months 7-12	Year 2 Months 13-18	Year 2 Months 19-24
Phase 1	PRE-PLANNING Determine the need and scope, project team, stakeholder involvement plan, establish project website and determine data collection needs	[Activity bar spanning all months]			
Phase 2	LAND SUITABILITY ANALYSIS Determine the land suitability and planning context for the project: Biological, Soils/Geology, Management Modules	[Activity bar spanning all months]			
Phase 3	PUBLIC INVOLVEMENT/ INVENTORY Determine public issues and concerns, hold public meetings, collect recreation field data, user surveys, recreation planning committee (rpc), rpc field visits	[Activity bar spanning all months]			
Phase 4	ASSESSMENT & CONCEPTS Synthesize issues and land suitability data. Determine preliminary management concepts for recreation	[Activity bar spanning all months]			
Phase 5	CONCEPT & PLAN WRITING Finalize and describe a recommended recreation management concept, develop strategies and objectives, prioritize implementation and phasing of projects	[Activity bar spanning all months]			
Phase 6	SEPA & COMMUNICATIONS Non-Project SEPA is conducted, plan is edited and formatted for publication	[Activity bar spanning all months]			
Phase 7	ADOPTION Plan is adopted by the agency	[Activity bar spanning all months]			

Recreation Planning Committee

Data Gathering

Biological Data
Soils/ Geology Data
Management Data

Field Visits
Field Inventory of
Current Use

Public Input
Recreation Trends
User Survey
Adjacent Land Uses

Assessment

Land Suitability
Analysis

Field Visits

Issue Sorting
from:

Survey Results
Public Meeting
Committee Input
On-Going Public Input

Evaluate Costs of Capital
Development & Maintenance

Recommendations

Committee Brainstorming

Preliminary Recommendations

Develop/Review Draft
Recreation Concept Plans

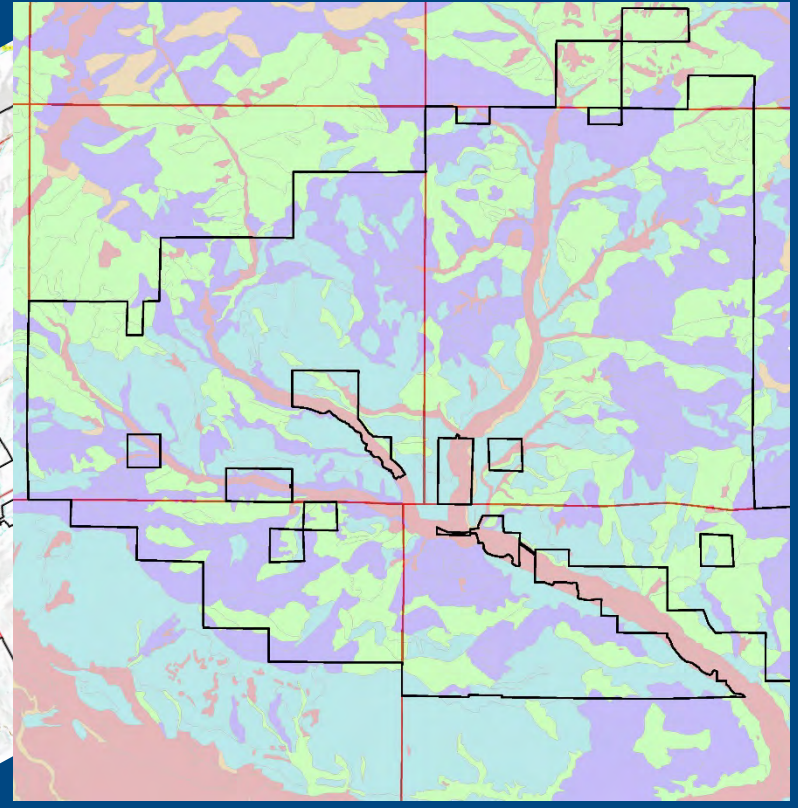
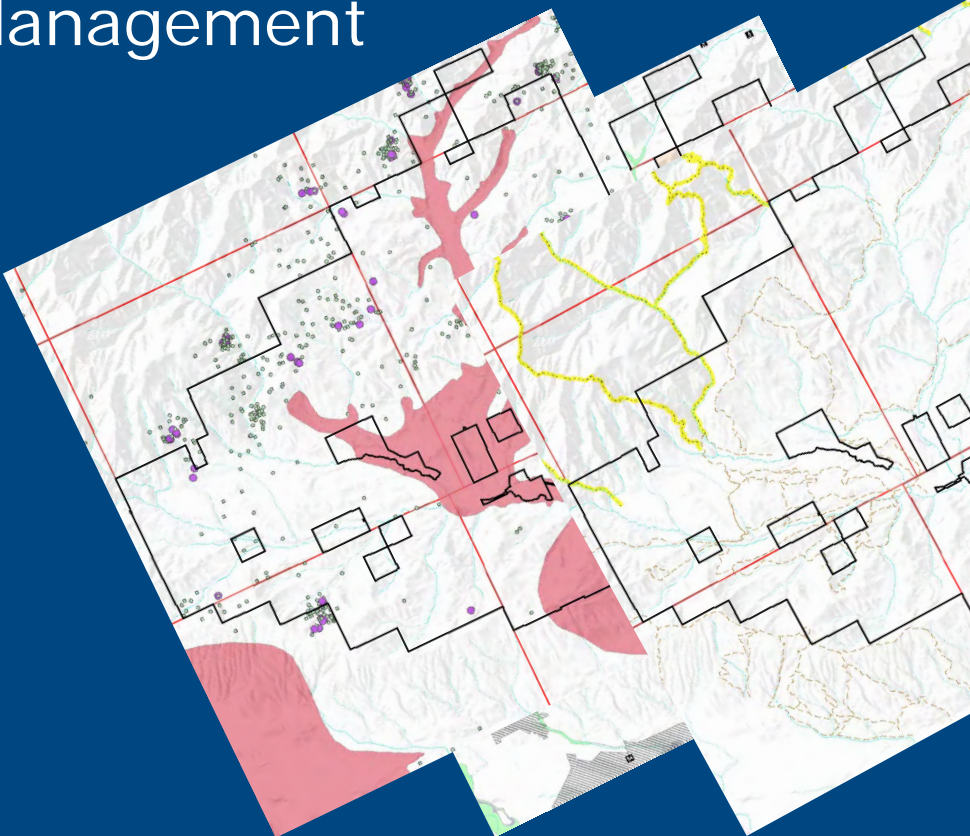
Prioritize Implementation Timeline

Final Concept Plan
Committee Recommendation

Recreation Land Suitability

Biology
Soils
Geology
Management

Maps guide recreation planning efforts



Teanaway Community Forest Recreation Planning

