



Connecting People and Places

PRESENTED BY
Darcy Batura



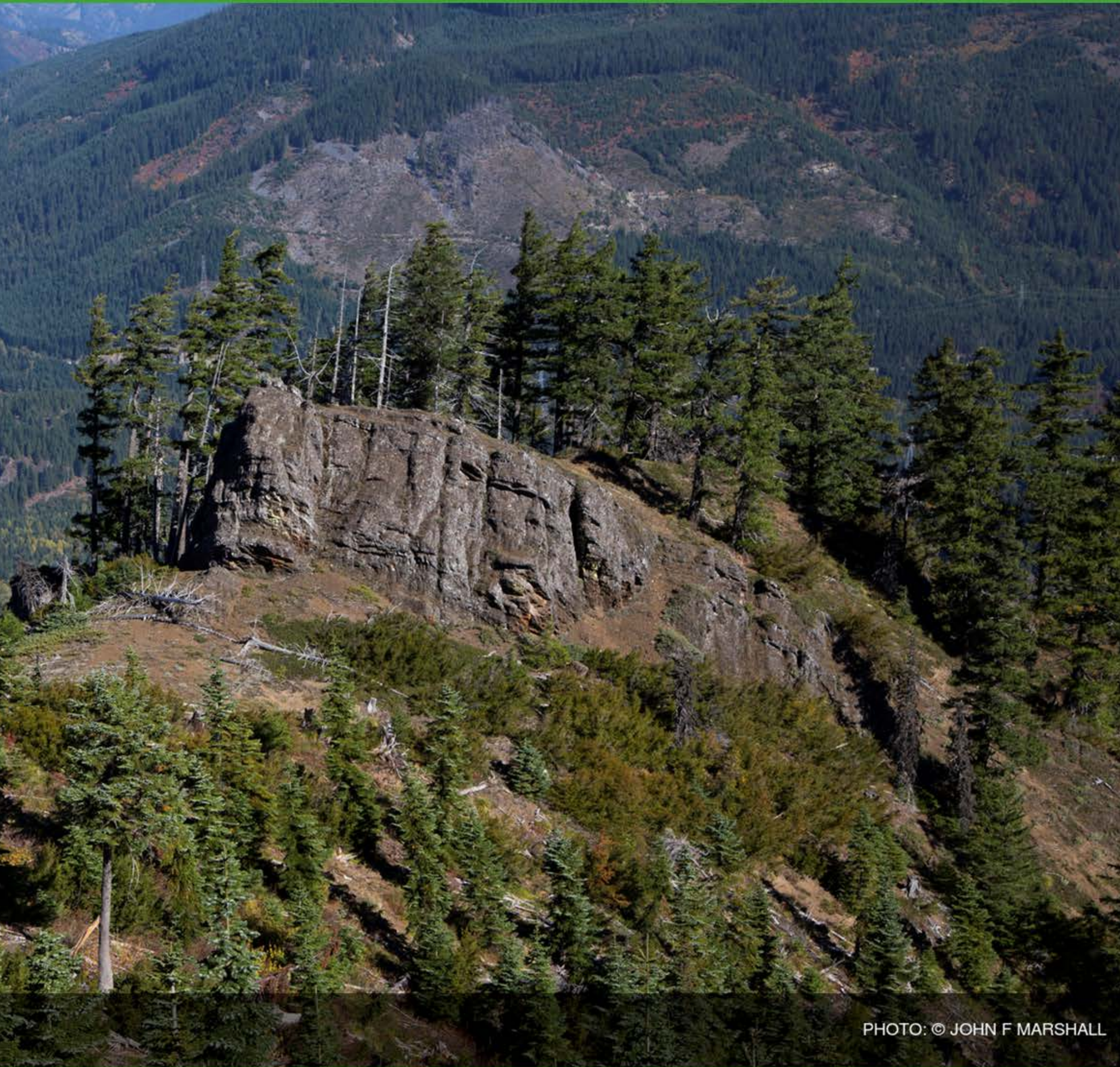


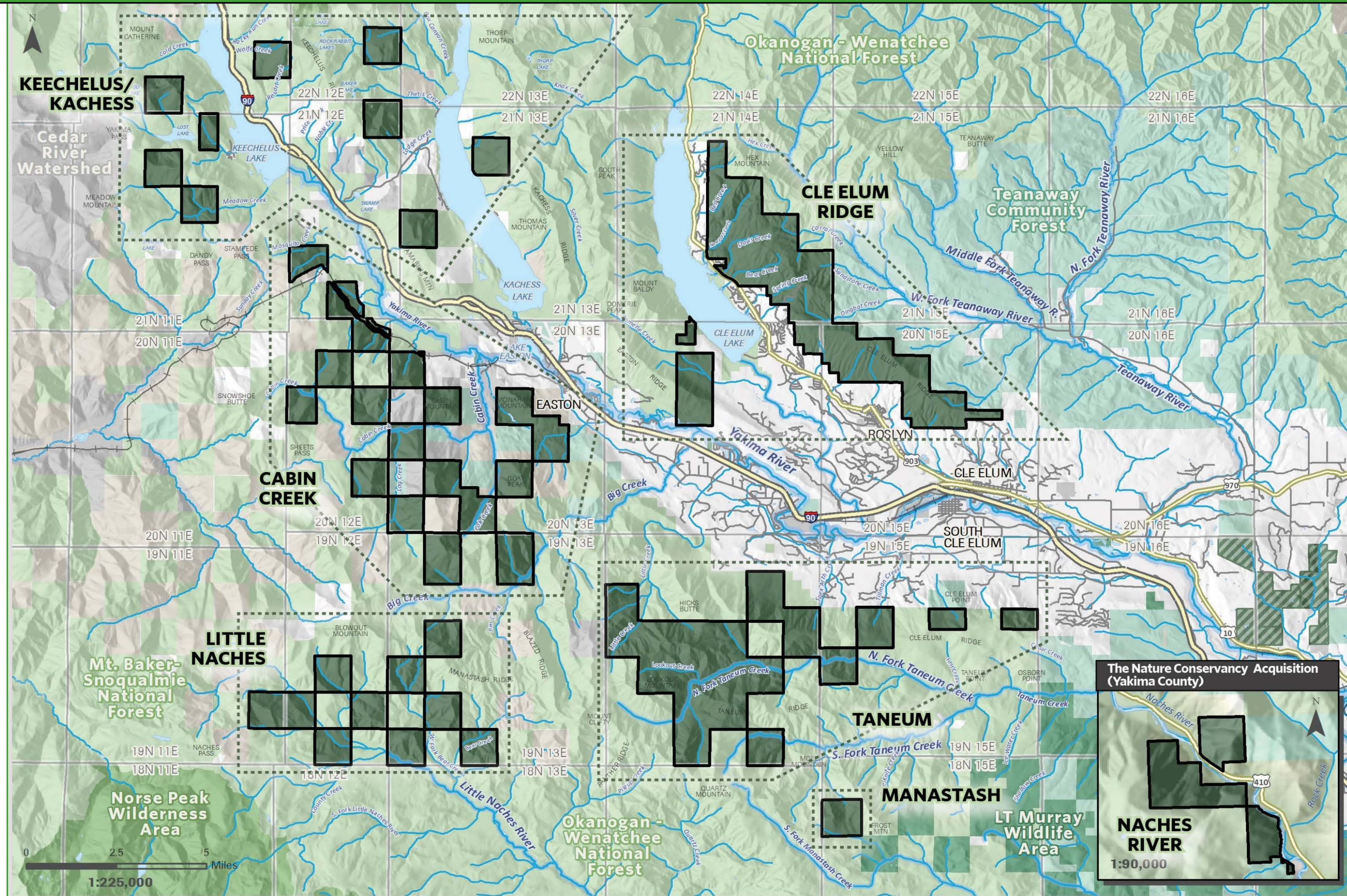
PHOTO: © JOHN F MARSHALL

Central Cascades Acquisition

47,921 acres of Kittitas County forestland

Largest acquisition for The Nature Conservancy in Washington.

Land Ownership in the Central Cascades



MAP LEGEND

- The Nature Conservancy Property
- Nature Conservancy Property Blocks
- The Nature Conservancy Conservation Easement
- National Wilderness
- National Forest
- Washington Dept. of Fish & Wildlife
- Washington Dept. of Natural Resources
- Other Public Lands
- Other Private Lands
- Township
- Interstate
- U.S. Forest Service Road
- Other Road
- Railroad
- Rivers and Creeks

November 13, 2015
 Data Sources:
 Kittitas County, WA Dept. of
 Natural Resources, The Nature
 Conservancy, ESRI
 Map: Erica Sloniker
 The Nature Conservancy



Significance of Acquisition:

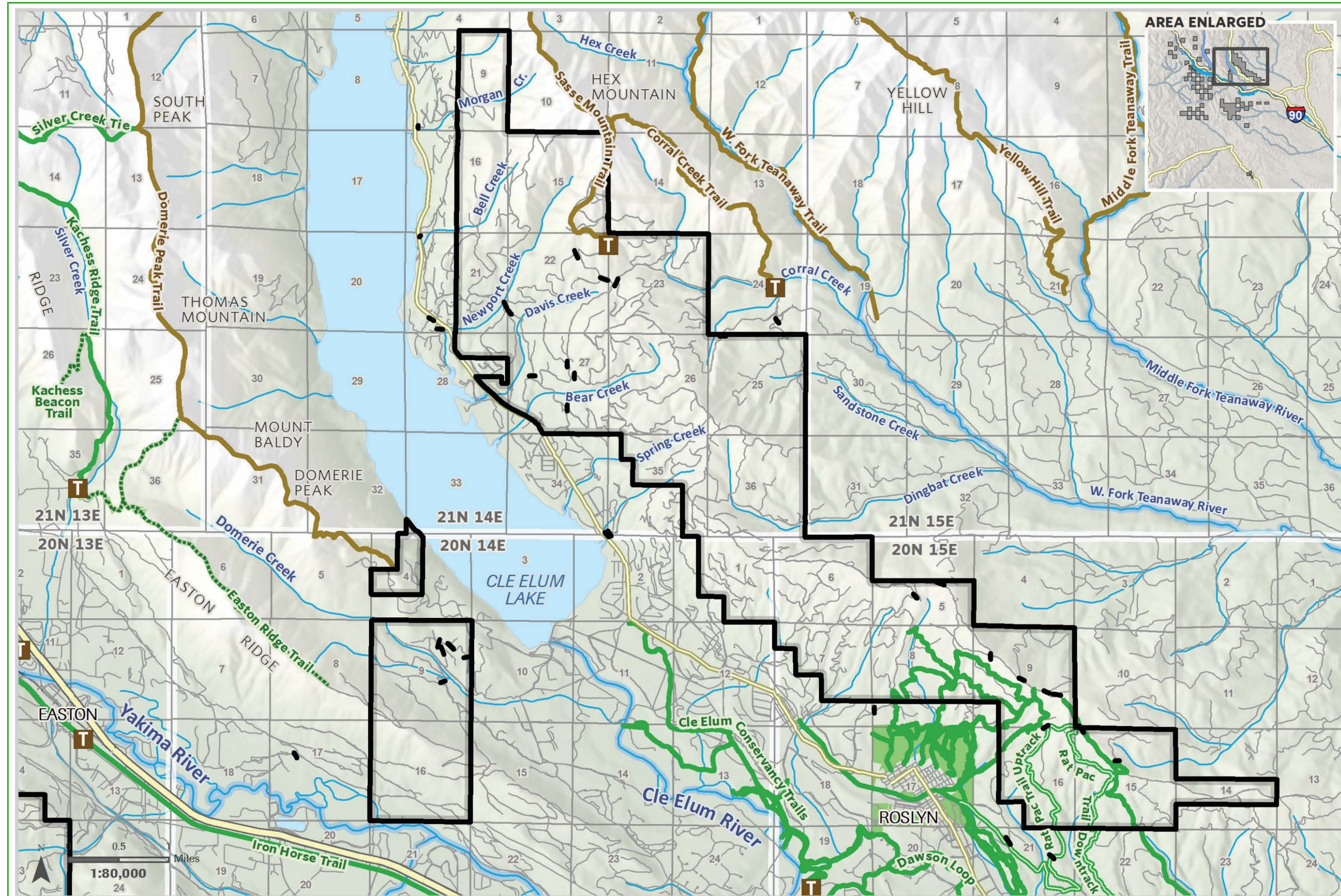
- Protects wildlife habitat, forests, recreation and clean water.
- Protects the headwaters of the Yakima Basin and its productive farmlands.
- Supports critical habitat for a range of threatened and endangered species.



Guiding Principles

1. Conservation is our primary goal.
2. To improve forest health, we will focus on addressing the primary threats.
3. We will use best scientific thinking and we will manage adaptively.
4. Active management is necessary for improving forest and landscape health.
5. Landscape health cannot be accomplished on a single ownership.
6. Appropriately managed recreation can be consistent with conservation.
7. We will prioritize our management actions considering timing and resources.
8. We will use local resources as much as possible to support the local economy.
9. Sustainable solutions will come through dialogue with partners and local community members.

Summer Trails: Cle Elum Ridge



MAP LEGEND

The Nature Conservancy Property

Motorcycling & Non-motorized Use Trail

Non-motorized Use Trail
For use information visit:
www.fs.fed.us, www.ci.roslyn.wa.us,
www.roslyntrails.com

Rat Pac Mountain Bike Trail
Hikers permitted.
Horses permitted on the uptrack.

Hiking Only Trail

Trailhead Parking

Gate or Barrier

Roslyn Urban Forest

Interstate/Highway

Other Road

Rivers and Creeks

Township

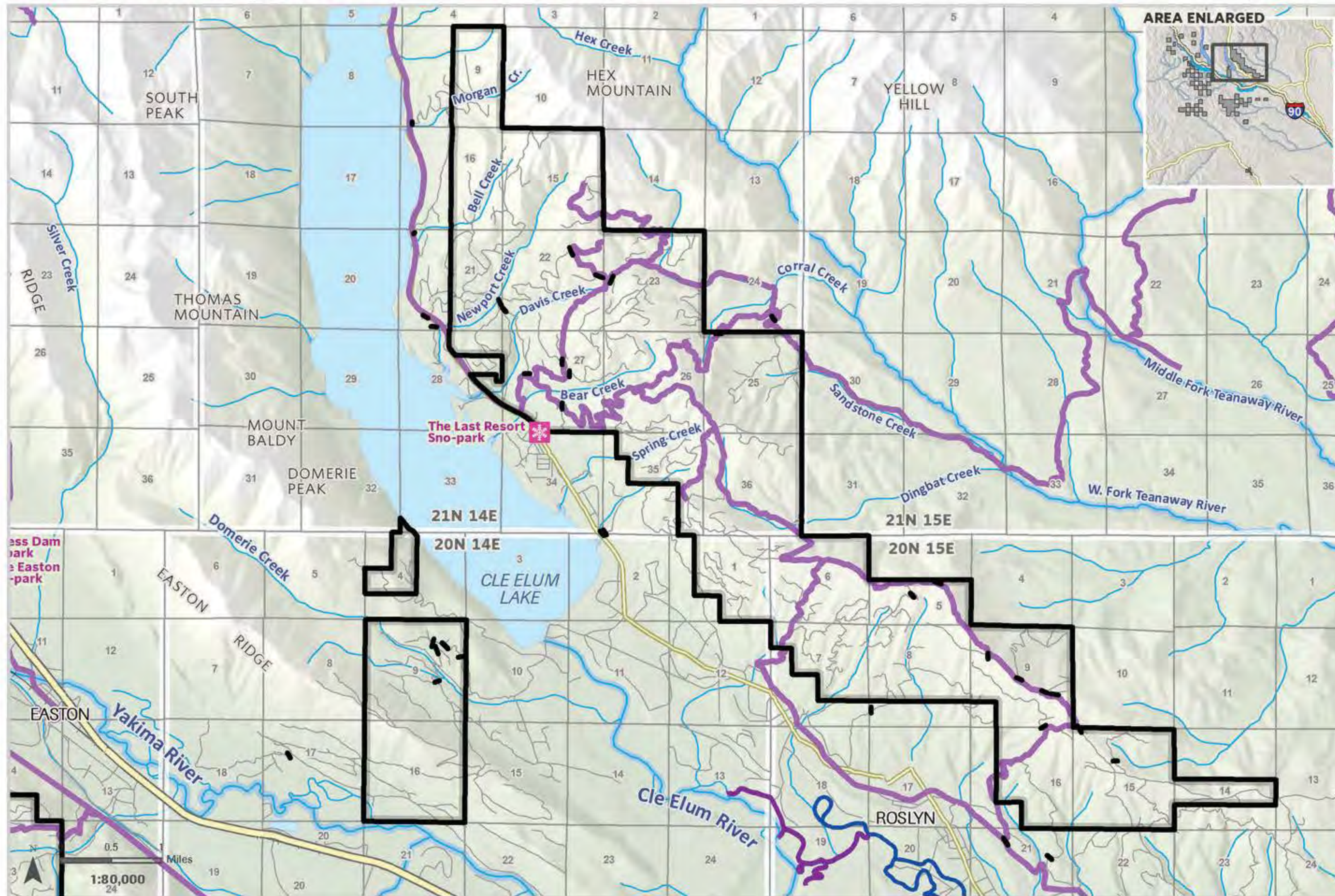
Section

October 29, 2015

Data Sources:
Trails - Washington Hometown

Check trail designations before recreating. Trails shown use best available data.

Winter Trails: Cle Elum Ridge



MAP LEGEND

The Nature Conservancy Property

Snowmobile and Non-motorized Use Trail
 Snowshoe Trail
 Cross Country Ski Trail

Motorized Sno-park
 Gate or Barrier

Township
 Section

Interstate
 Other Road
 Rivers and Creeks

November 16, 2015

Data Sources:
 Trails - Washington State Parks
 Check trail designations before recreating. Trails shown use best available data.

Land Use and Access Policies

Non-motorized use

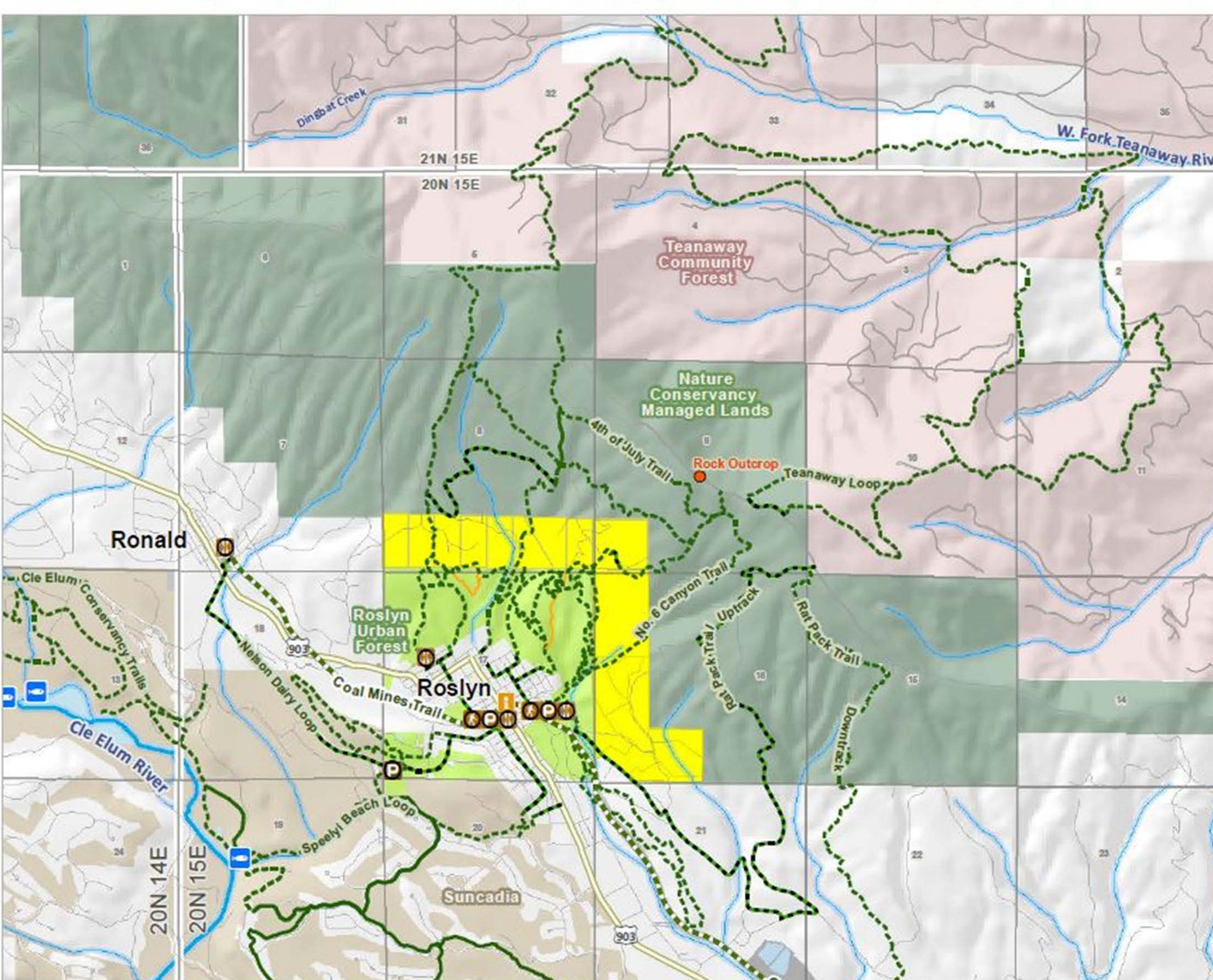
- Permitted on all lands, throughout the year, unless otherwise posted.
- Stay on roads and trails unless the activity involves cross country travel.
- Mountain bikes must stay on designated trails.

Motorized use

- Roads on the Cle Elum Ridge are closed to Motorized use, other than FS roads 4305 and 4305-118.
- Access is prohibited beyond a closed road or trail, even if a gate or sign has been vandalized.
- Snowmobiles/bikes are permitted to travel cross country with adequate snow cover.



TOWN TO TEANAWAY: REGIONAL TRAILS SYSTEM



Connecting People & Places

- Partnering with KCPRD No. 1
- Trail from Roslyn to the top of Cle Elum Ridge
- Popular recreation area with unauthorized, unsustainable routes causing resource damage and conflicts
- Formalize connection with the Teanaway Community Forest
- Acquisition subcommittee

Illegal Use on the Cle Elum Ridge....

- Repeated trespass from ORV users
- Firewood theft
- Possible hunter trespass
- Direct property damage (poaching, erosion, etc.)

TNC Response:

- Media outreach
- Working with the sheriff to cite trespassers
- Developing agreement with the sheriff's office
- Exploring enforcement contract with WDFW
- Notifying law enforcement about trouble areas

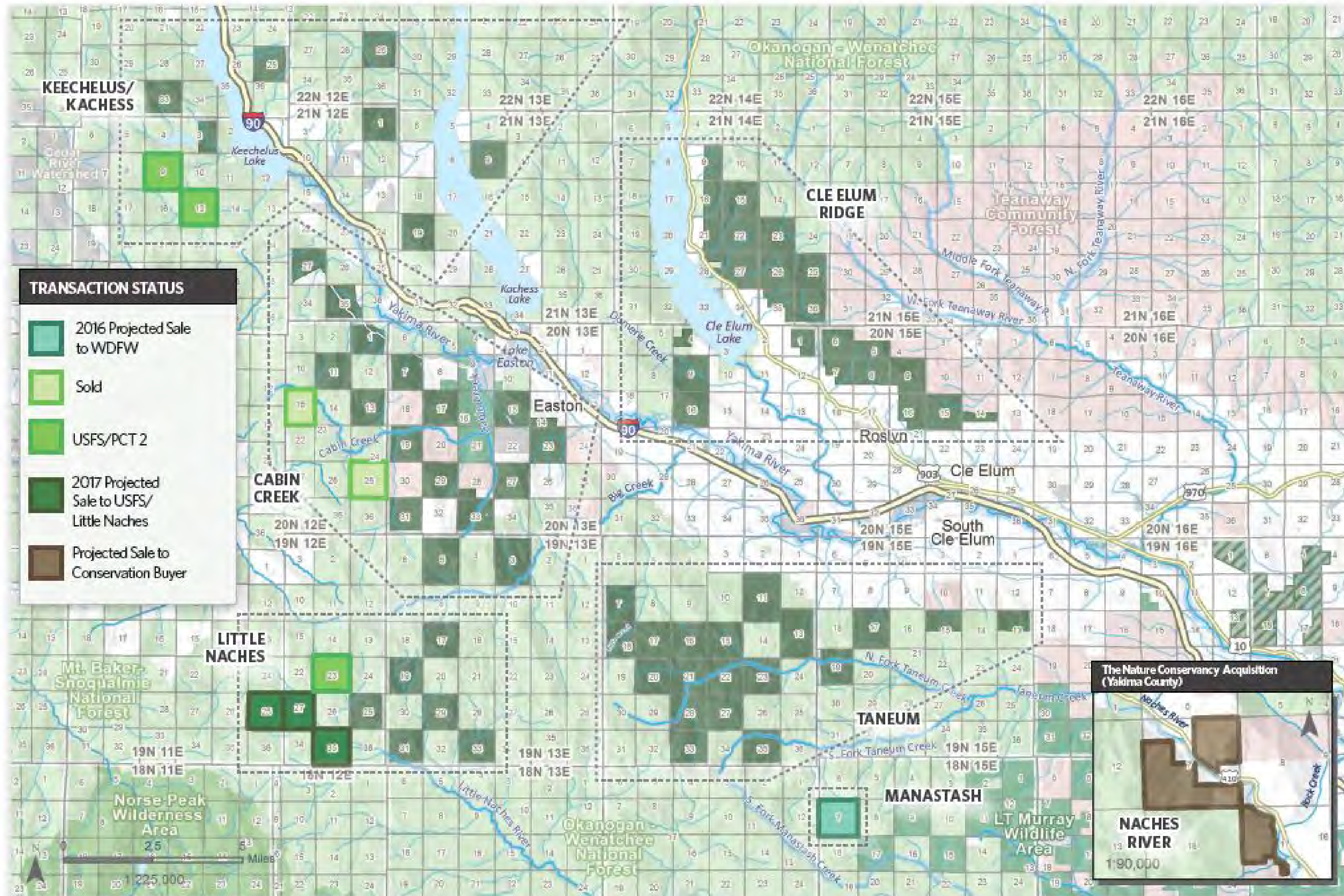









Single Track on Cle Elum Ridge

- Motorized Use is prohibited on Cle Elum Ridge – Interim Policy
- Permanent policy must consider outcomes of the Teanaway Rec Planning Process
- If single track is permitted in Teanaway adjacent to TNC land, proposals for a single motorized route would be considered.
 - Proposals must include:
 - ✓ Consistency with Guiding Principals
 - ✓ Plan for Monitoring and Maintenance
 - ✓ Strategy for Addressing Problems
- TNC is in the conservation business, not the recreation management business

DISPOSITION TRANSACTIONS STATUS



TRANSACTION STATUS

-  2016 Projected Sale to WDFW
-  Sold
-  USFS/PCT 2
-  2017 Projected Sale to USFS/Little Naches
-  Projected Sale to Conservation Buyer

The Nature Conservancy Acquisition (Yakima County)

MAP LEGEND

-  The Nature Conservancy Property
-  Nature Conservancy Property Blocks

-  The Nature Conservancy Conservation Easement
-  National Wilderness
-  National Forest

-  Washington Dept. of Fish & Wildlife
-  Washington Dept. of Natural Resources
-  Other Public Lands

-  Other Private Lands
-  Township

-  Interstate/Highway
-  Rivers and Creeks

September 30, 2016

Map: Erica Sloniker
The Nature Conservancy

Get Involved

Contact us:

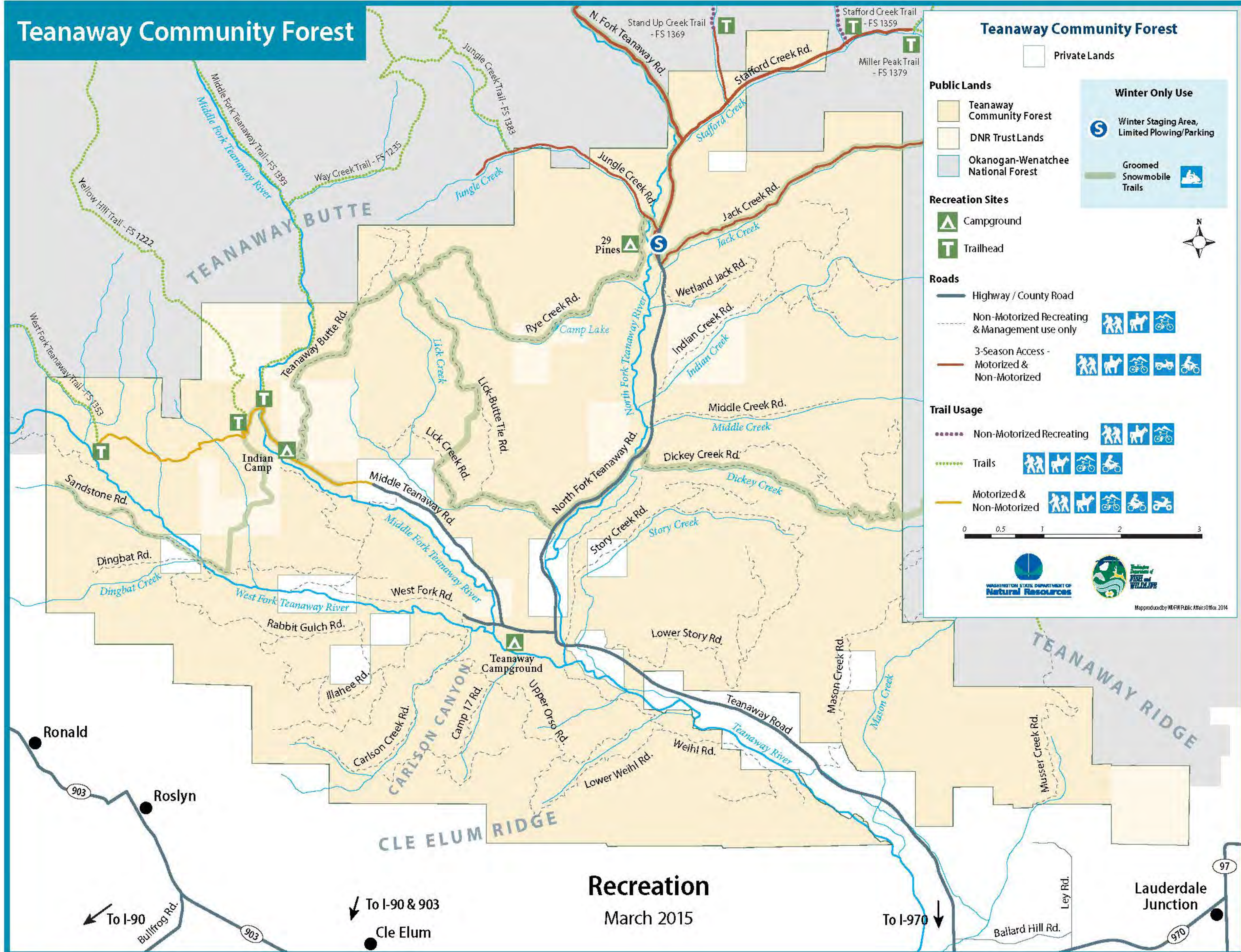
- Darcy Batura, Central Cascades Community Coordinator
 - Darcy.Batura@tnc.org / 509-852-2508
- Brian Mize, Central Cascades Field Forester
 - Brian.mize@tnc.org / 509-248-2238

Learn more about our work in the Central Cascades:
www.washingtonnature.org/centralcascades

For information about volunteer opportunities:
www.washingtonnature.org/volunteer



Teanaway Community Forest



Teanaway Community Forest

Private Lands

Public Lands

- Teanaway Community Forest
- DNR Trust Lands
- Okanogan-Wenatchee National Forest

Winter Only Use

- Winter Staging Area, Limited Plowing/Parking
- Groomed Snowmobile Trails

Recreation Sites

- Campground
- Trailhead

Roads

- Highway / County Road
- Non-Motorized Recreating & Management use only
- 3-Season Access - Motorized & Non-Motorized

Trail Usage

- Non-Motorized Recreating
- Trails
- Motorized & Non-Motorized

0 0.5 1 2 3

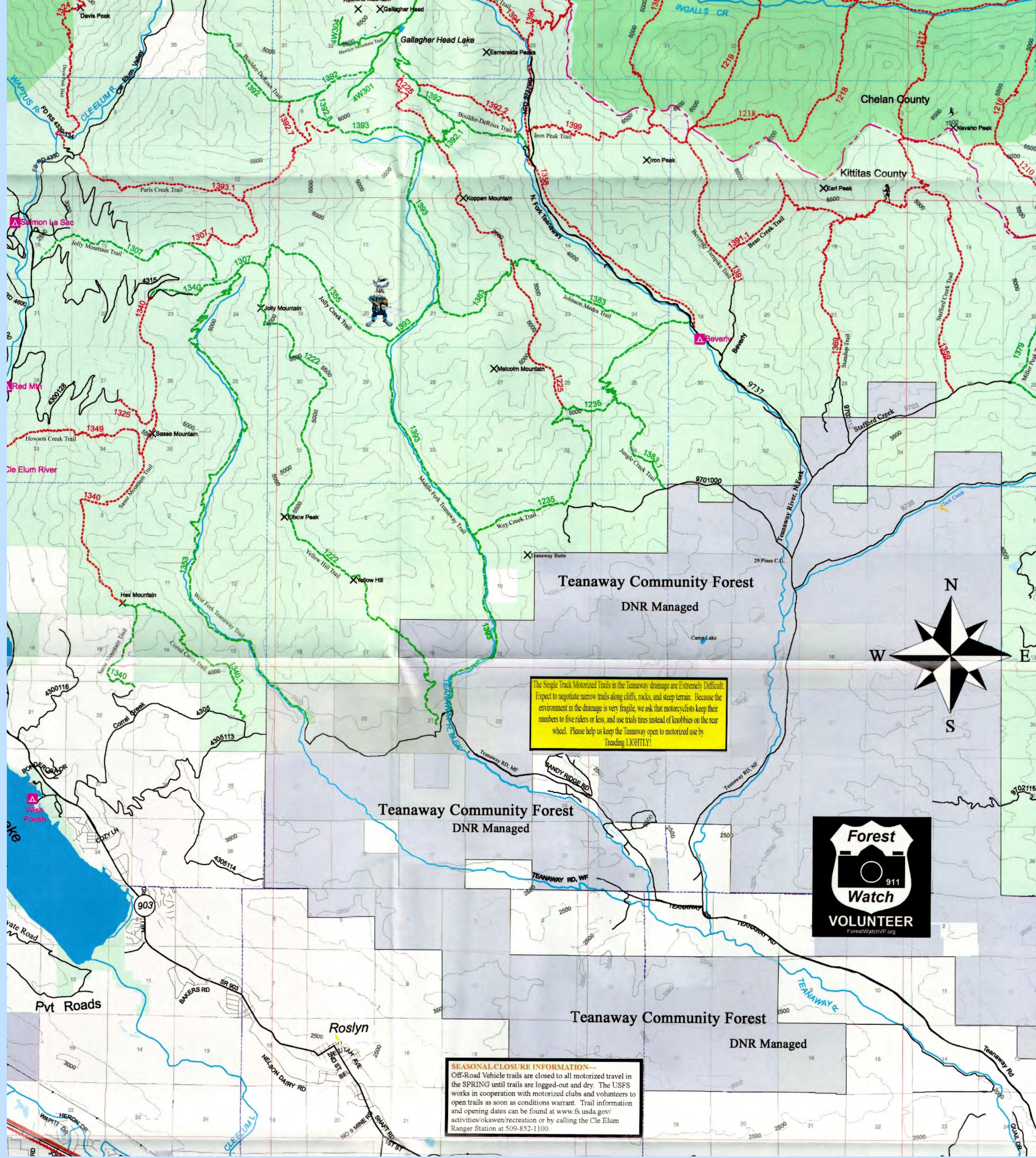
WASHINGTON STATE DEPARTMENT OF Natural Resources
 WASHINGTON STATE DEPARTMENT OF FOREST and WILDLIFE

Map produced by WDFW Public Affairs Office, 2014

Recreation
March 2015

To I-90
 To I-90 & 903
 Cle Elum

To I-970
 Lauderdale Junction



The Single Track Motorized Trails in the Teanaway drainage are Extremely Difficult. Expect to negotiate narrow trails along cliffs, rocks, and steep terrain. Because the environment in the drainage is very fragile, we ask that motorcyclists keep their numbers to five riders or less, and use trails tires instead of knobby tires on the rear wheel. Please help us keep the Teanaway open to motorized use by *Treading LIGHTLY!*

SEASONAL CLOSURE INFORMATION
Off-Road Vehicle trails are closed to all motorized travel in the SPRING until trails are logged-out and dry. The USFS works in cooperation with motorized clubs and volunteers to open trails as soon as conditions warrant. Trail information and opening dates can be found at www.fs.usda.gov/activities-okawen/recreation or by calling the Cle Elum Ranger Station at 509-852-1100.



