

MODERATE DENSITY TRAILS: (light green area) Using sustainable existing trails, relocate & rebuild a non-motorized, cross-country trail for a variety of skill levels with loops and connections between trailheads, campgrounds, rock formations and viewpoint destinations for hikers, bikers and equestrians; Consider developing a system of backcountry campsites along this trail.

SCENIC DRIVING LOOP: Work with user groups to manage seasonal access for scenic driving on designated primitive forest roads for high clearance 4X4, AWD, and street legal motorcycles. Route to include vistas, picnic areas, wildlife viewing, providing all ability access. Final location T.B.D.

USFS TRAIL CONNECTIONS: Partner with USFS to evaluate, improve, and maintain trails to provide sustainable connections to multi-use USFS trails for hikers, bikers, equestrians and motorcycle riders. Evaluate and relocate trails along the Middle Fork and West Fork Teanaway Rivers to protect fish habitat and water quality. Convert the road to a trail connection to the USFS Yellow Hill Trail for hikers, bikers, equestrians and motorcycle riders.

29 PINES CAMPGROUND: Reconfigure to provide a more sustainable facility located outside of the flood plain and expand designated day use parking for winter and summer trail access.

JACK CREEK ROAD: Partner with USFS to enhance the road for 3-season scenic driving to Red Top and Hwy 97.

ROAD & RIVER CORRIDORS: (Blue Shaded Areas): Coordinate with river restoration to manage river access for fishing, swimming, and day use, determining infrastructure needs.

INDIAN CREEK TRAILHEAD & TRAIL: Develop a trailhead for hiking, biking and horseback riding along Indian Creek and provide opportunities for interpretation of river restoration. Trailhead to provide parking for horse trailers and passenger vehicles, infor-

RED TOP: Partner with the USFS to develop a non-motorized trail connection to Red Top Mountain and long distance loop connections.

DICKEY CREEK ACCESS: Provide parking and toilets and improve river access

INDIAN CAMP: Reconfigure to provide more sustainable facilities located outside of the flood plain and expand equestrian camping. Develop designated day use summer parking.

TEANAWAY CAMPGROUND: Reconfigure to provide more sustainable facilities located outside of the flood plain and expand group camping with future equestrian camping

TVU: Provide parking and short trails to the river and surrounding forest

TRAILHEADS FOR USFS TRAIL CONNECTIONS: Provide parking, information and toilets for the West Fork, Middle Fork and Yellow Hill Trails for hikers, bikers, equestrians and motorcycle riders and improve access roads to the trailheads.

TOWNS TO TEANAWAY: Partner with the Towns-to-Teanaway planning effort to Develop non-motorized trail connections to TNC lands and the communities of Roslyn, Ronald, and Cle Elum for hikers, bikers and equestrians.

WEST FORK TRAILHEAD: Provide a new trailhead at the end of the West Fork County Rd. with parking, toilets and information for hiking, biking and horseback riding in the southwestern part of the forest. Trailhead serves as a Sno-Park in the winter.

HIGHER DENSITY TRAILS: (dark green shaded area) Evaluate and reroute existing trails in the SW part of the TCF to provide sustainable non-motorized trails for a variety of skill levels. Provide loops and connections between trailheads, campgrounds, rivers, rock formations and viewpoints for hikers, bikers and equestrians, while respecting private property and reducing redundancy.

ENTRY STATION: Work with public and private partners to locate and develop an entry station for visitors to the TCF.

ENVIRONMENTAL EDUCATION: Work with public and private partners to locate and develop environmental education opportunities in the TCF.

LOWER DENSITY TRAILS: (yellow shaded area) Develop a non-motorized, cross-country trail connecting 29 Pines, TVU Parking, viewpoints and unique features for hikers, bikers and equestrians. Consider developing a system of backcountry campsites along this trail.

GENERAL NOTES:

1. Recreation opportunities to be developed and managed in coordination with the 5 goals of the TCF Management Plan.
2. The primary management objective (PMO) of the TCF is 3-season non-motorized recreation in the spring, summer and fall; Motorcycle riding is a secondary use on designated trail connections to multi-use USFS trails.
3. Primary Management Objective (PMO) identifies the principal use or uses for which an area is managed. It does not necessarily mean that other recreational uses in an area are excluded.
4. Improve signage and information at trails and facilities in the TCF.
5. Trails shown are conceptual; routes subject to change.

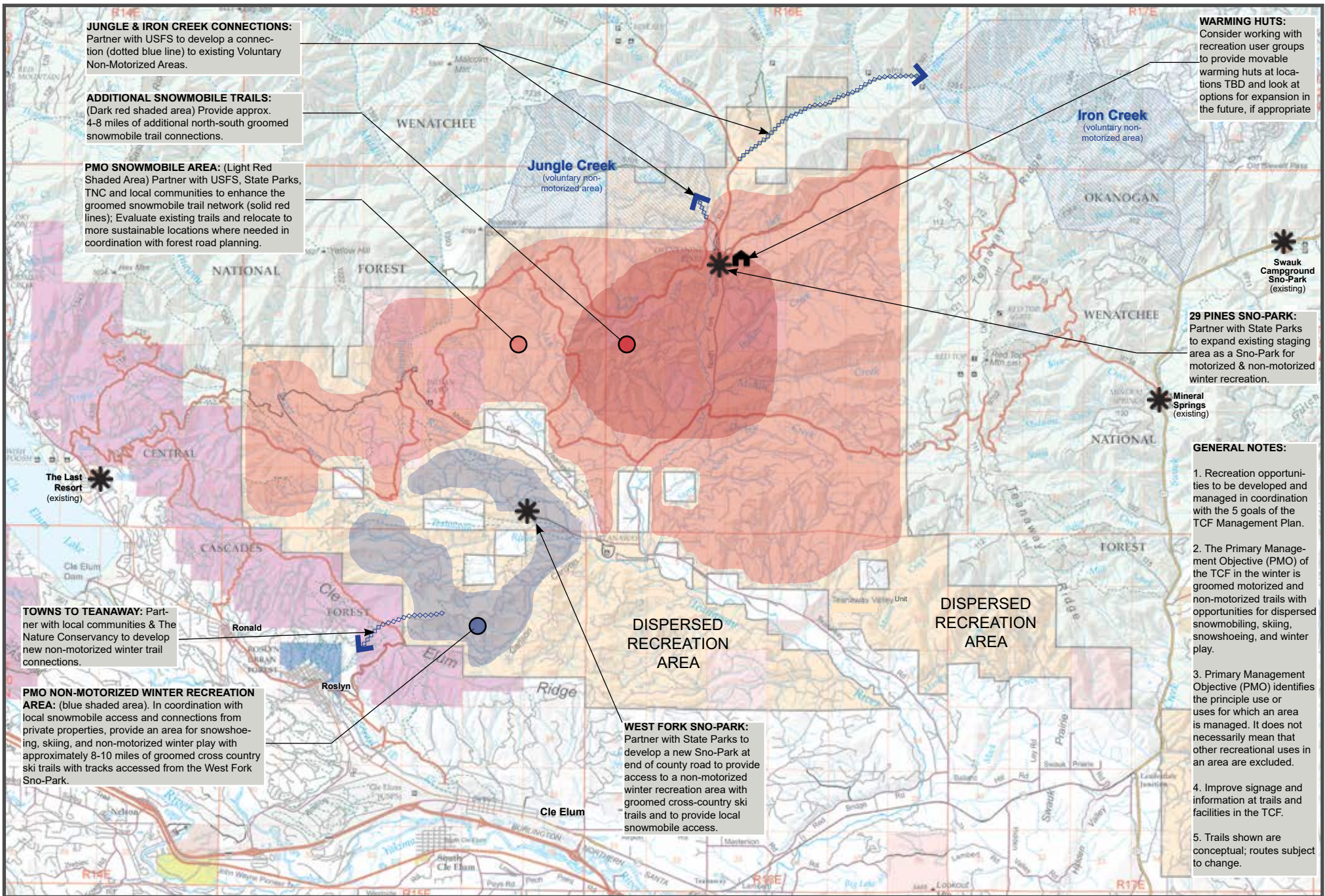
Teanaway Community Forest Summer Recreation Concepts

3/30/2018 DRAFT-TRAILS AND FACILITIES SHOWN ARE CONCEPTS FOR DISCUSSION PURPOSES ONLY

KEY

- Non-motorized trails for hiking, biking and horseback riding
- Multi-Use trails for hiking, biking, horse & motorcycles
- Scenic driving roads, seasonal access
- Higher Density Trails
- Moderate Density Trails
- Lower Density Trails
- River and Road Corridor





JUNGLE & IRON CREEK CONNECTIONS:
Partner with USFS to develop a connection (dotted blue line) to existing Voluntary Non-Motorized Areas.

ADDITIONAL SNOWMOBILE TRAILS:
(Dark red shaded area) Provide approx. 4-8 miles of additional north-south groomed snowmobile trail connections.

PMO SNOWMOBILE AREA: (Light Red Shaded Area) Partner with USFS, State Parks, TNC and local communities to enhance the groomed snowmobile trail network (solid red lines); Evaluate existing trails and relocate to more sustainable locations where needed in coordination with forest road planning.

WARMING HUTS:
Consider working with recreation user groups to provide movable warming huts at locations TBD and look at options for expansion in the future, if appropriate

Iron Creek
(voluntary non-motorized area)

Jungle Creek
(voluntary non-motorized area)

Swauk Campground Sno-Park
(existing)

29 PINES SNO-PARK:
Partner with State Parks to expand existing staging area as a Sno-Park for motorized & non-motorized winter recreation.

Mineral Springs
(existing)

GENERAL NOTES:

1. Recreation opportunities to be developed and managed in coordination with the 5 goals of the TCF Management Plan.
2. The Primary Management Objective (PMO) of the TCF in the winter is groomed motorized and non-motorized trails with opportunities for dispersed snowmobiling, skiing, snowshoeing, and winter play.
3. Primary Management Objective (PMO) identifies the principle use or uses for which an area is managed. It does not necessarily mean that other recreational uses in an area are excluded.
4. Improve signage and information at trails and facilities in the TCF.
5. Trails shown are conceptual; routes subject to change.

The Last Resort
(existing)

TOWNS TO TEANAWAY: Partner with local communities & The Nature Conservancy to develop new non-motorized winter trail connections.





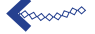
PMO NON-MOTORIZED WINTER RECREATION AREA: (blue shaded area). In coordination with local snowmobile access and connections from private properties, provide an area for snowshoeing, skiing, and non-motorized winter play with approximately 8-10 miles of groomed cross country ski trails with tracks accessed from the West Fork Sno-Park.

DISPERSED RECREATION AREA

DISPERSED RECREATION AREA

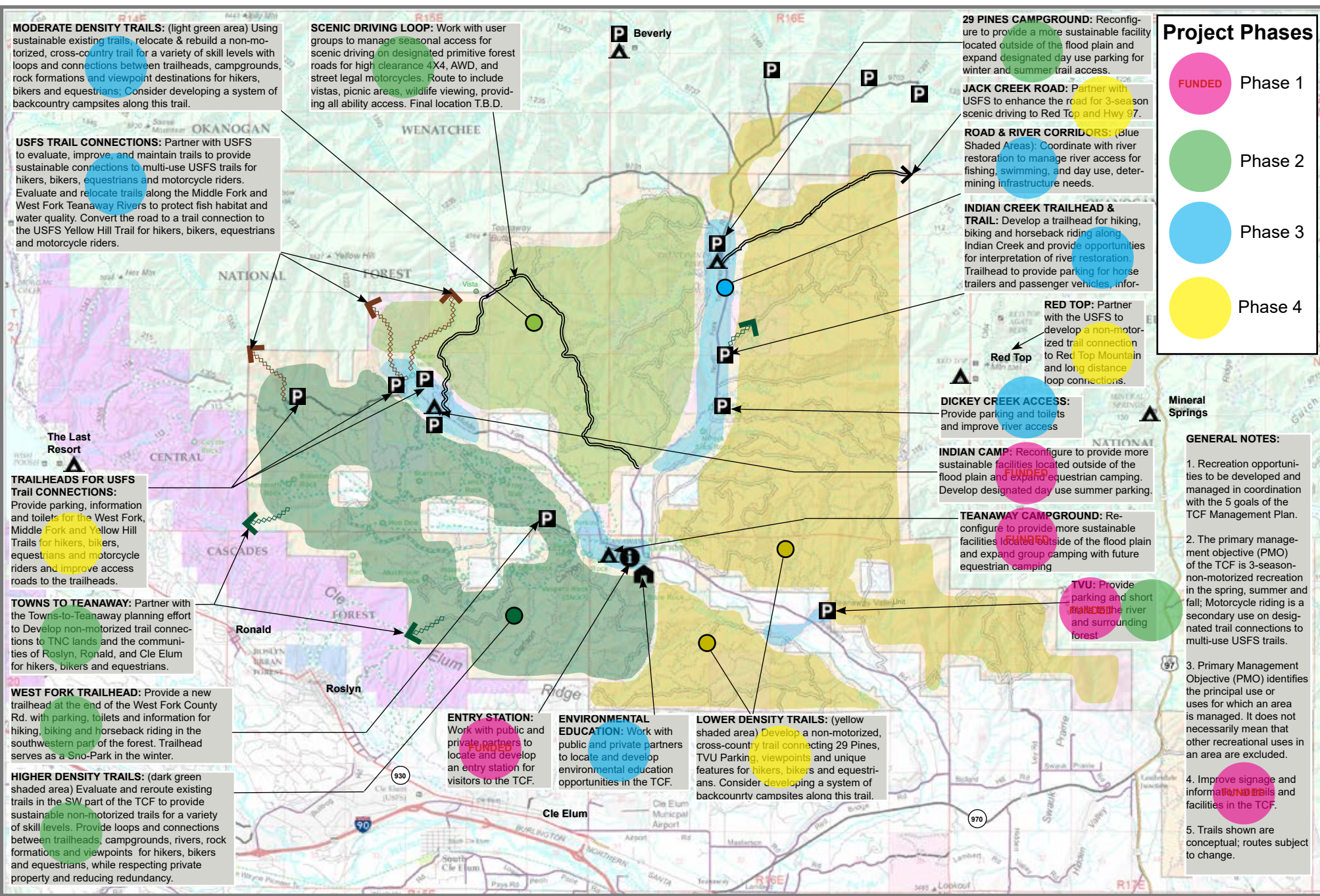
WEST FORK SNO-PARK:
Partner with State Parks to develop a new Sno-Park at end of county road to provide access to a non-motorized winter recreation area with groomed cross-country ski trails and to provide local snowmobile access.

KEY

-  PMO Snowmobile Area with groomed trails.
-  PMO Non-motorized winter recreation area with groomed cross-country ski trails.
-  Groomed snowmobile trails to be evaluated and rerouted where needed
-  Snowmobile trail sections to be rerouted
-  Non-motorized connections for skiing and snow shoeing

**Teanaway Community Forest
Winter Recreation Concepts**
*03/30/218 DRAFT-TRAILS AND FACILITIES SHOWN
ARE CONCEPTS FOR DISCUSSION PURPOSES ONLY*





Project Phases

- FUNDING Phase 1
- Phase 2
- Phase 3
- Phase 4

- ### GENERAL NOTES:
1. Recreation opportunities to be developed and managed in coordination with the 5 goals of the TCF Management Plan.
 2. The primary management objective (PMO) of the TCF is 3-season non-motorized recreation in the spring, summer and fall; Motorcycle riding is a secondary use on designated trail connections to multi-use USFS trails.
 3. Primary Management Objective (PMO) identifies the principal use or uses for which an area is managed. It does not necessarily mean that other recreational uses in an area are excluded.
 4. Improve signage and inform **ROADS** and facilities in the TCF.
 5. Trails shown are conceptual; routes subject to change.

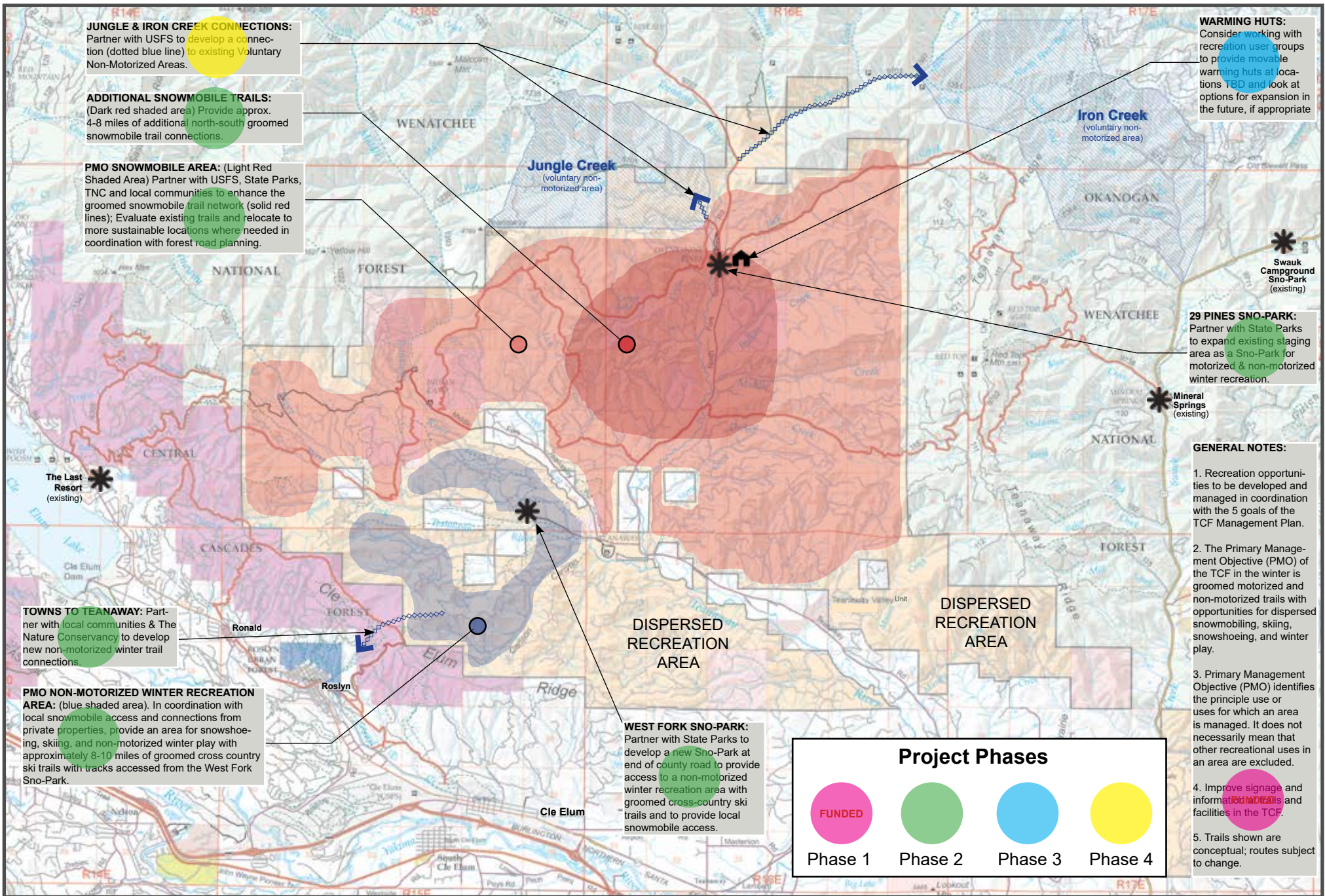
Teanaway Community Forest Summer Recreation Concepts

*3/30/2018 DRAFT-TRAILS AND FACILITIES SHOWN
ARE CONCEPTS FOR DISCUSSION PURPOSES ONLY*

KEY

	Non-motorized trails for hiking, biking and horseback riding		Higher Density Trails
	Multi-Use trails for hiking, biking, horse & motorcycles		Moderate Density Trails
	Scenic driving roads, seasonal access		Lower Density Trails
			River and Road Corridor





Teanaway Community Forest Winter Recreation Concepts

03/30/218 DRAFT-TRAILS AND FACILITIES SHOWN ARE CONCEPTS FOR DISCUSSION PURPOSES ONLY