

# Chapman Lake | Funded for Transfer in the 2023-25 Biennium

---

<b>Receiving Agency:</b>	Washington Department of Fish and Wildlife (WDFW)
<b>Acres:</b>	542
<b>County:</b>	Spokane County
<b>Trust:</b>	Common School (Trust 03)
<b>Proposed Use:</b>	Wildlife habitat, recreation
<b>Transfer Type:</b>	Fee
<b>Estimated Value:</b>	\$1,000,000

---

## Characteristics and Location

The parcel is located in southern Spokane County, south of Cheney and the Turnbull National Wildlife Refuge. The parcel includes the southern portion of Chapman Lake.

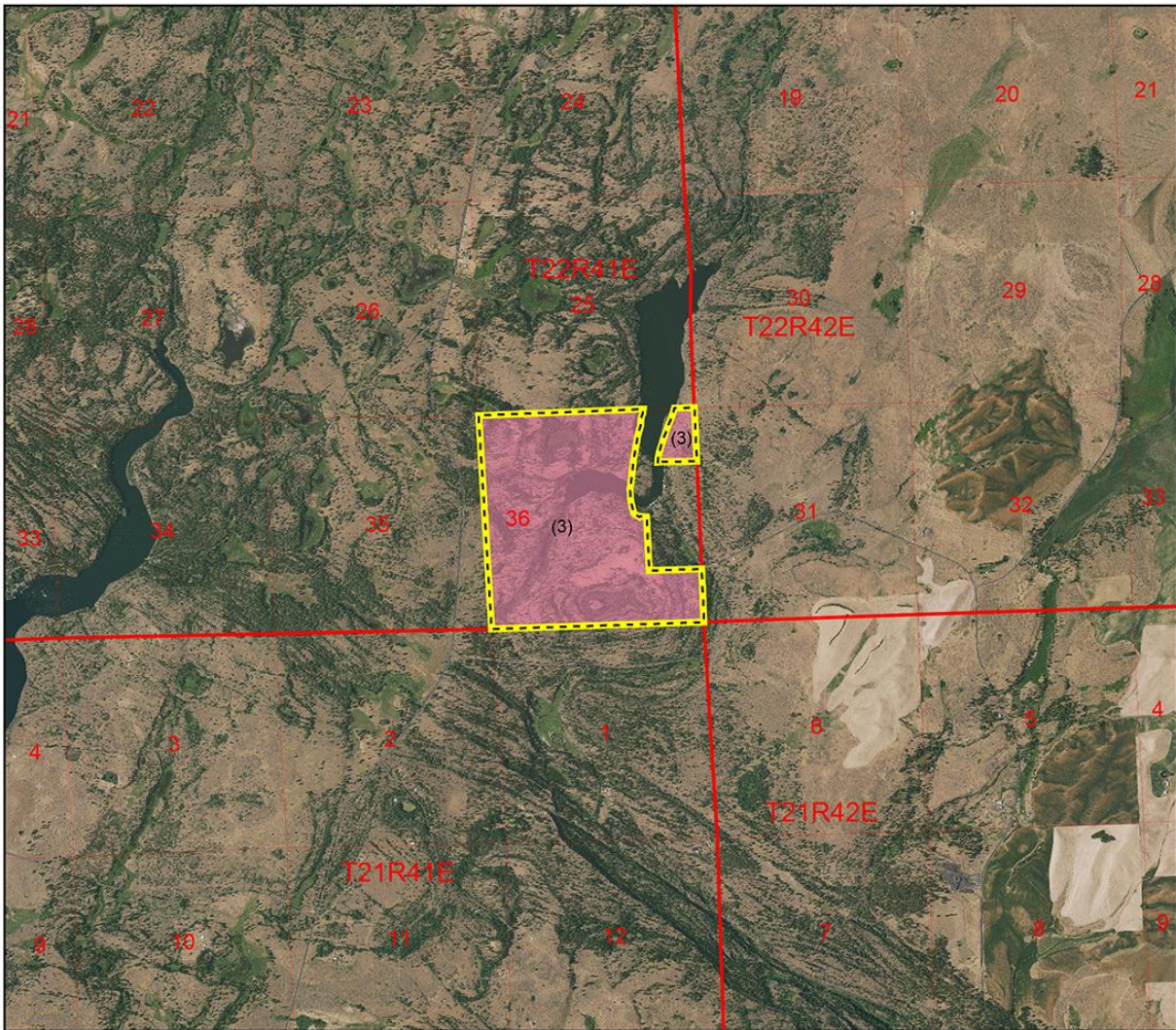
## Why is this Transfer in the Trust's Best Interests?

- ✓ **This parcel has limited potential for revenue generation.** The parcel is too sparsely forested for timber harvest, its soils and topography are not suitable for agriculture, it offers low potential for grazing revenue, it is too small for industrial-scale solar power generation, and it is located too close to the 20,000-acre Turnbull National Wildlife Refuge for wind power generation. DNR currently does not have water rights for this parcel.
- ✓ **The parcel has high ecological values,** including wildlife habitat and support for wildlife migration to and from the nearby wildlife refuge. Chapman Lake and riparian areas to the south are used by bald eagles in the fall and by waterfowl in the fall and winter, until the lake freezes. Numerous species of wildlife are known to utilize the area, including whitetail and mule deer, elk, coyotes, and wolves.
- ✓ **The transfer would restore public access to Chapman Lake,** which historically has been a productive and popular lake for fishing and other public water uses. This site is approximately 15 miles from the greater Spokane area.

## Legal Description

Portion of Section 36, Township 22 North, Range 41 East, W.M., Spokane County, Washington

# Chapman Lake | Map



### DNR-Managed Trust Lands

- State Forest Transfer (1)
- State Forest Purchase (2)
- Common School (3)
- Agricultural School (4)
- University - Transferred (5)
- CEP and RI (6)
- Capitol Grant (7)
- Normal School (8)
- Scientific School (10)
- University - Original (11)
- Community Forest Trust (48)
- NAP / NRCA (74/75)
- Other DNR-Managed Lands

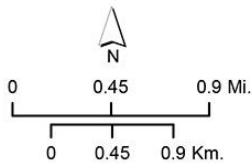
### Located In

Spokane County, Washington



### Transfer Parcel(s)

Boundaries may vary at time of transfer.



### Area of Detail



WASHINGTON STATE DEPARTMENT OF  
**NATURAL RESOURCES**

Disclaimer: Extreme care was used during the compilation of this map to ensure accuracy. However, due to changes in ownership and the need to rely on outside information, the Department of Natural Resources cannot accept responsibility for errors or omissions, and therefore, there are no warranties which accompany this material.

csny490\_20220531\_\\dnr\divisions\FR\_DATA\forest\_info\_2\gis\projects\adhoc\_requests\20220510\_tlt\_2022\mxds\tlt\_2022\_mapbook.mxd