



# **STATUS OF THE NORTHERN SPOTTED OWL IN WASHINGTON**

**Joseph B. Buchanan  
Washington Department of Fish & Wildlife  
Wildlife Diversity Division  
February 2016**



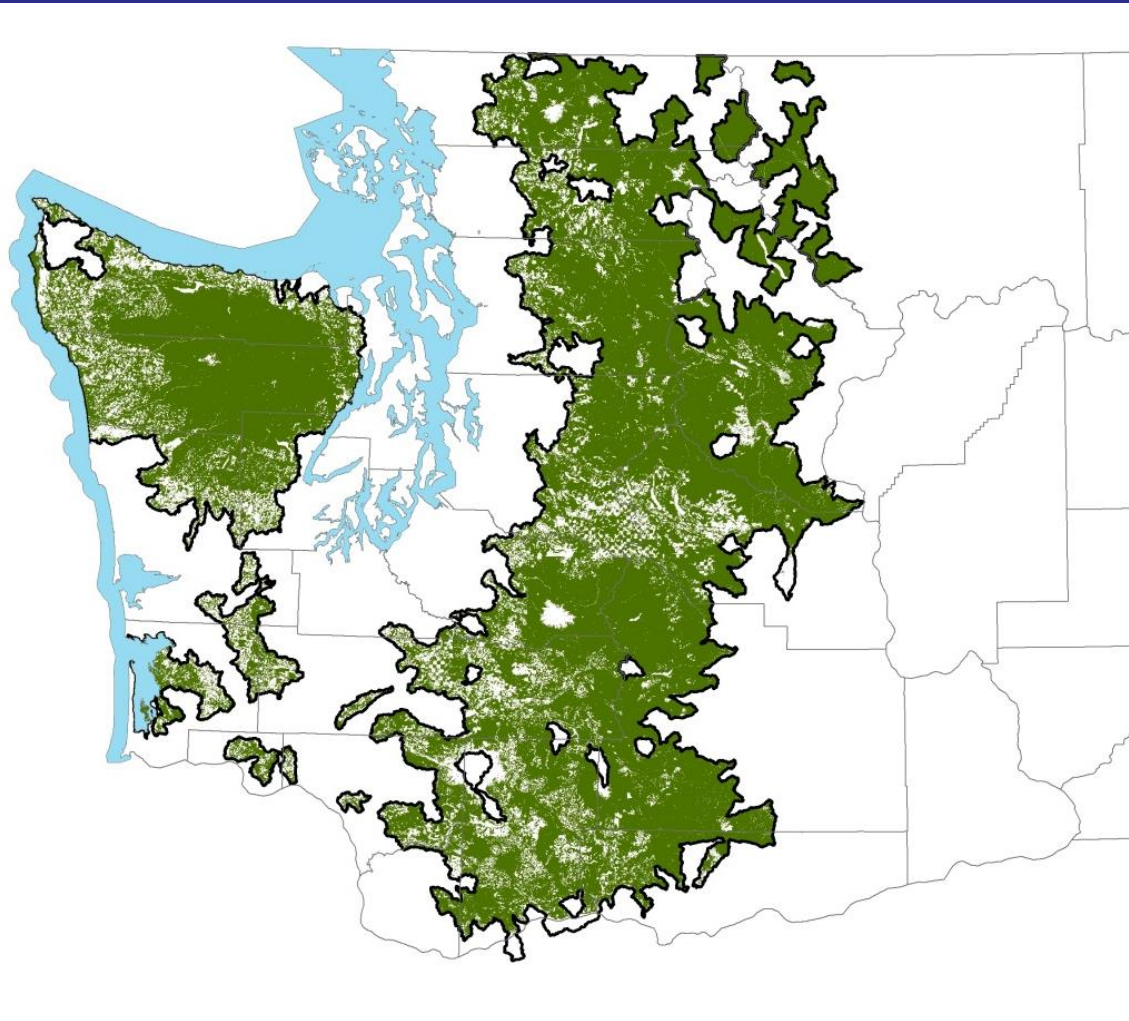
# Listing Status

- 1988: designated as endangered by Fish & Wildlife Commission
- 1990: ESA listed as threatened
  - Loss & degradation of habitat
- Periodic Status Review presented to Fish & Wildlife Commission in January 2016
- Decision by Fish & Wildlife Commission expected March 2016





# General distribution in WA





# Home Range

- WA home ranges are largest documented
- Olympic Peninsula: median home range = **14,232 acres** (~4,411 - 27,298 acres), or a 2.7-mile radius circle
- Cascade Range: 1.8-mile radius circle



# Habitat

- Nesting, roosting, foraging & dispersal
- Structurally complex mature and old forest
  - Large snags & downed wood, multiple canopy layers, moderate to high canopy closure
  - Mistletoe important habitat feature in the eastern Cascades





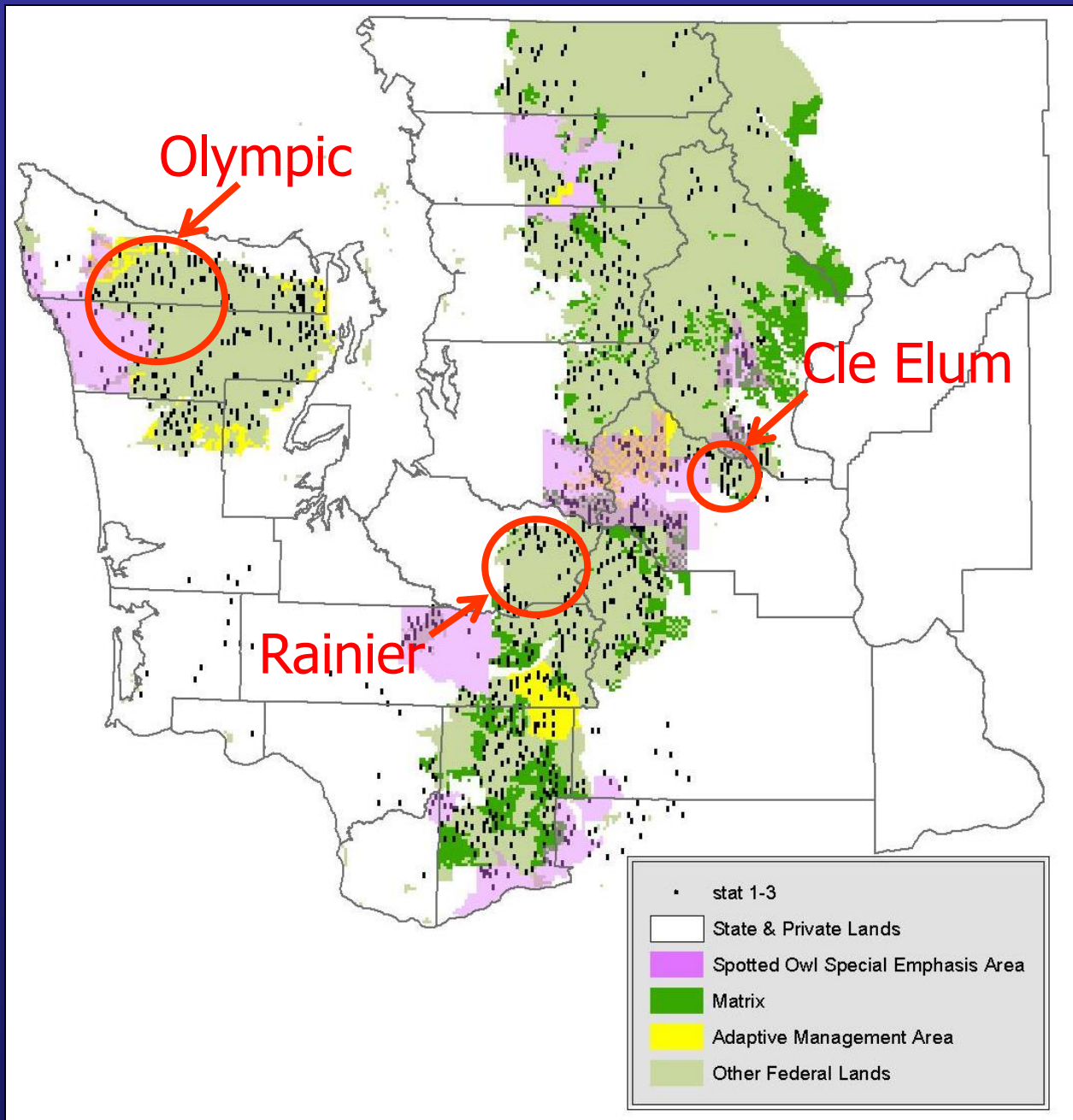
# Limiting Factors

- Habitat loss
  - Harvest
  - Fire
  - Windthrow
  - Insects/disease
- Other factors:
  - Barred Owls
  - Predation
  - Weather
  - Disease (e.g. West Nile Virus)



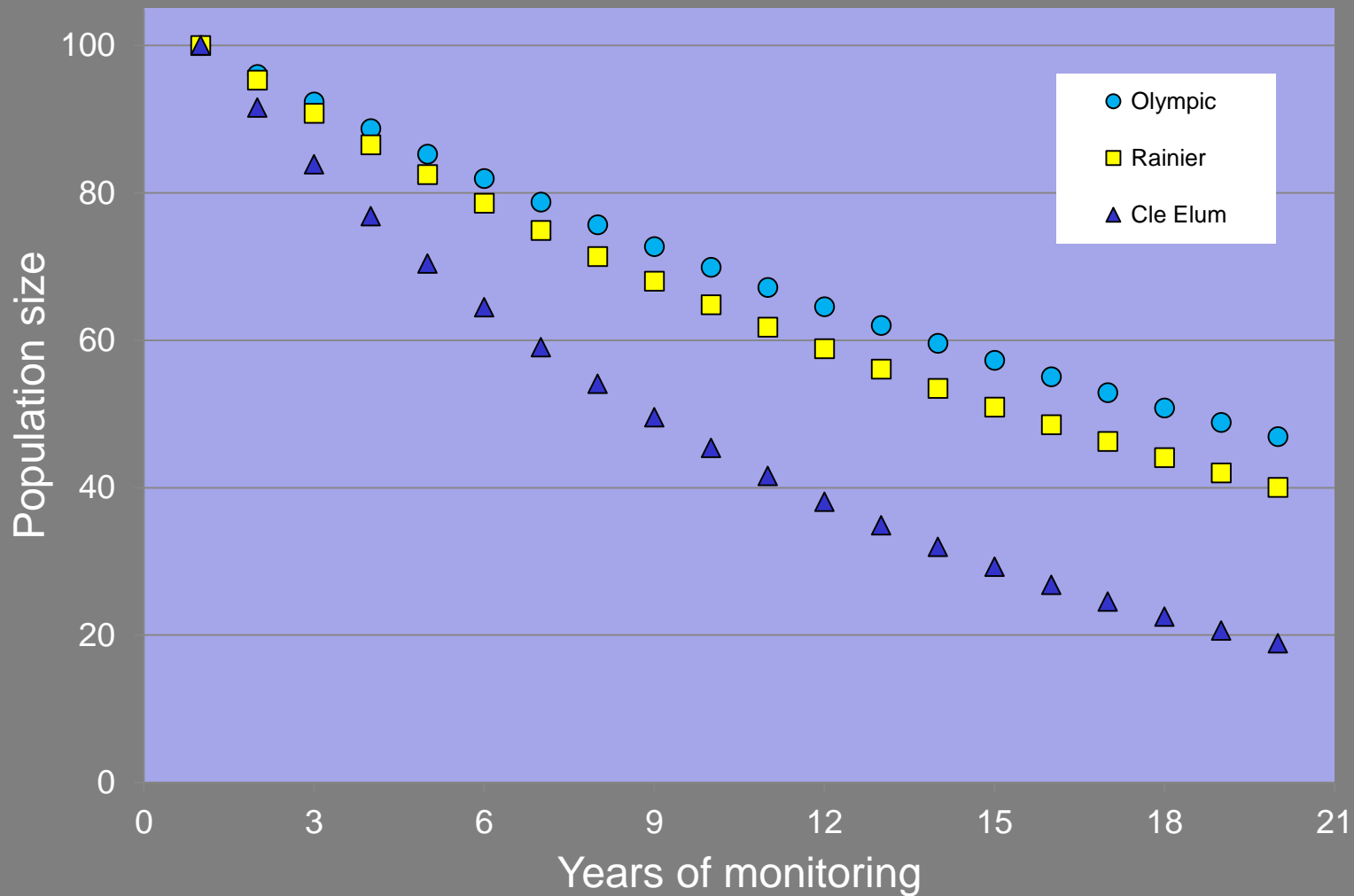
# Population Status

- NSO populations declining in 7 of 11 study areas range-wide (Dugger et al. 2016)
- Declines most substantial in WA and N. OR
- Three demography study areas in WA:
  - Cle Elum rate of change: -8.4% / year
  - Olympic rate of change: -3.9% / year
  - Rainier rate of change: -4.7% / year





# Rate of Change in Washington Study Areas



# Summary

- NSO populations continue to decline in WA; WDFW recommended **no change** in status of NSO (endangered)
- Recovery requires a continued focus from all conservation partners on minimizing threats and implementing conservation actions including incentive-based programs



Questions?



Photographs: Jared Hobbs, Tracy Fleming