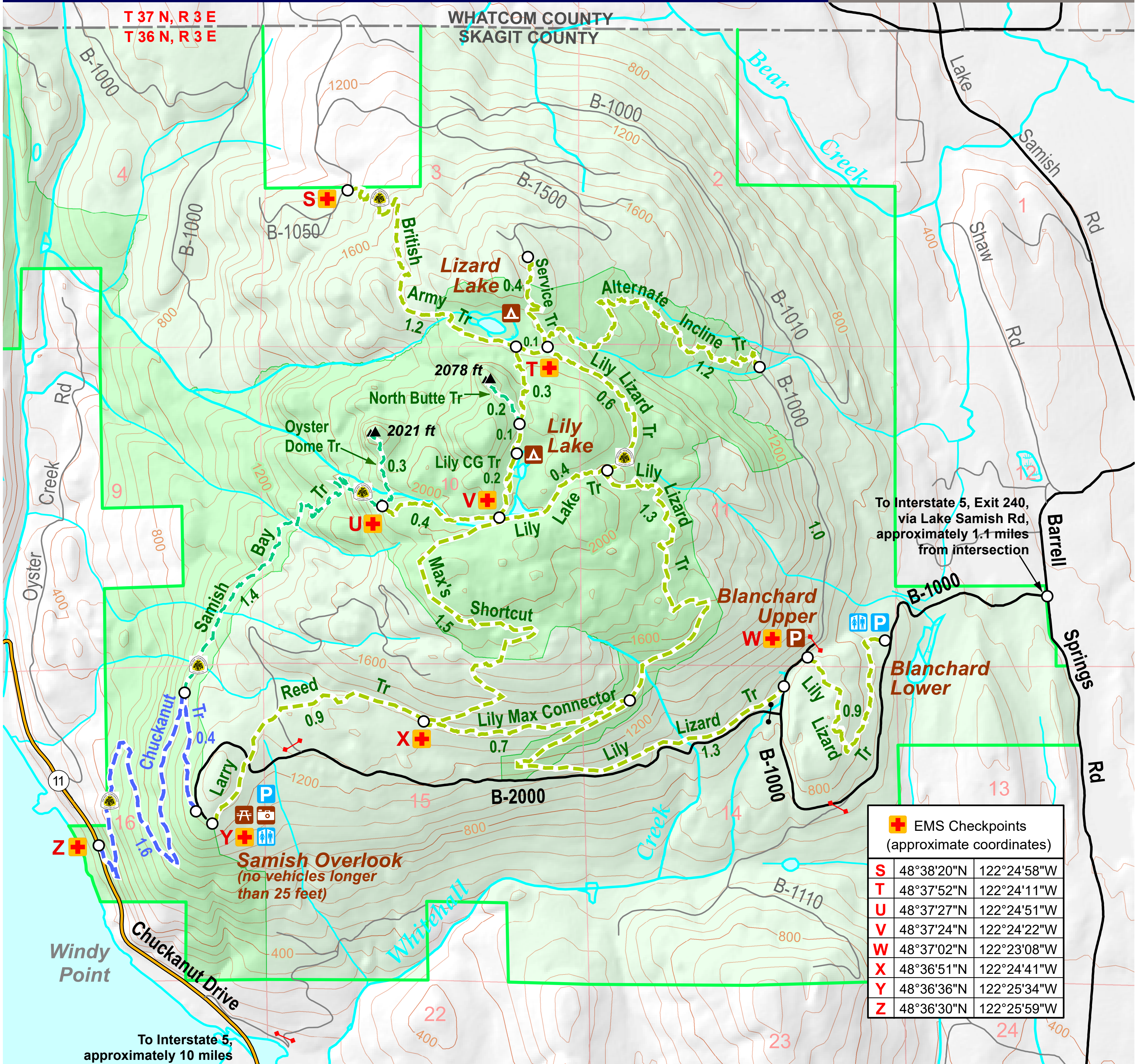


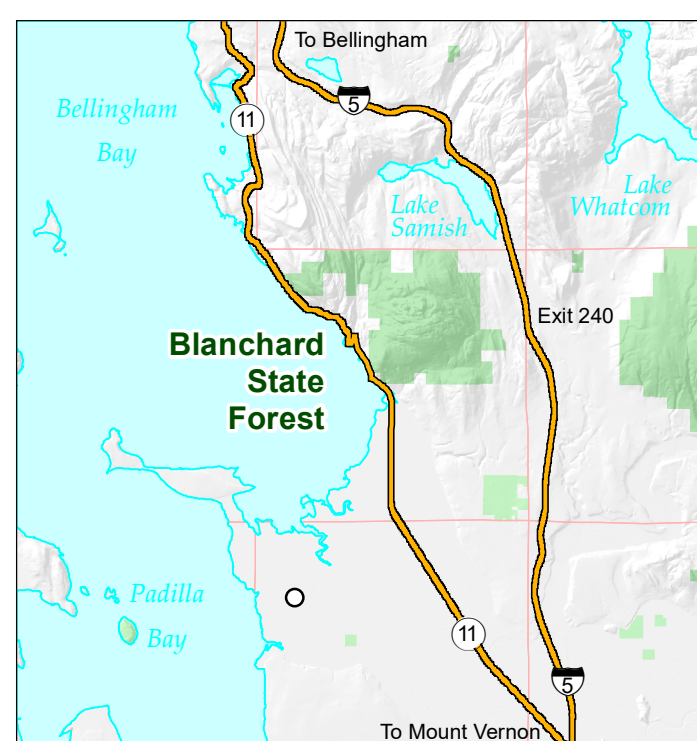
Blanchard Trail System

Blanchard
State
Forest



0 1/4 1/2 1 1 1/2 2 Miles

1 : 12,000 Contour Interval 80 feet



- Blanchard State Forest
- Blanchard core
- Viewpoint
- Campground
- Day Use Area
- Parking / Trailhead (Blue denotes Accessible)
- Accessible Toilet
- Trail is part of Pacific Northwest Nat'l Scenic Trail
- Hike / Horse / Mountain Bike
- Hike / Mountain Bike
- Hike Only
- Trail Mileage
- Interstate or State Route
- Primary Forest Road
- Secondary Forest Road
- Gate: Closed; Open



Produced by: DNR's Recreation Section; Northwest Region; and Communications & Outreach; May 2019

Note to map users: Extreme care was used during compilation of this map to ensure accuracy. However, due to changes in ownership and the need to rely on outside sources of information, the Department of Natural Resources cannot accept responsibility for errors or omissions. Therefore, there are no warranties which accompany this material.

dnr.wa.gov/MobileMaps