

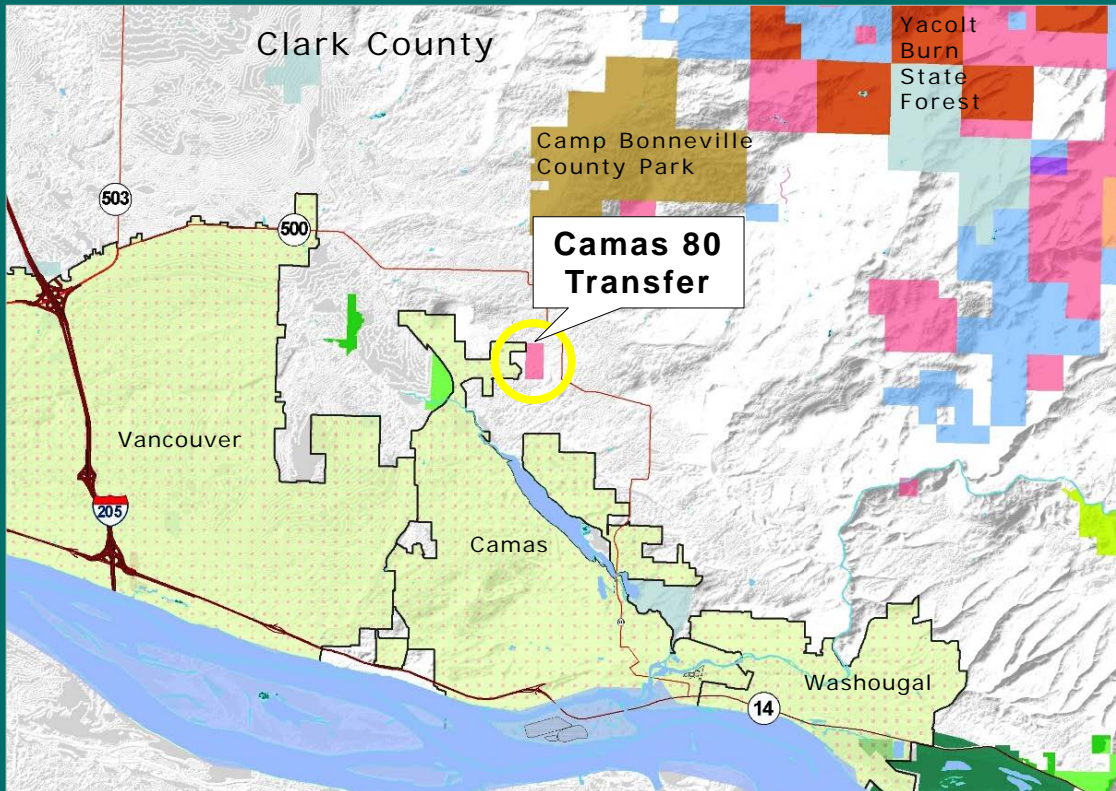
Camas 80 Transfer

02-092945

Clark County



Camas 80 Transfer

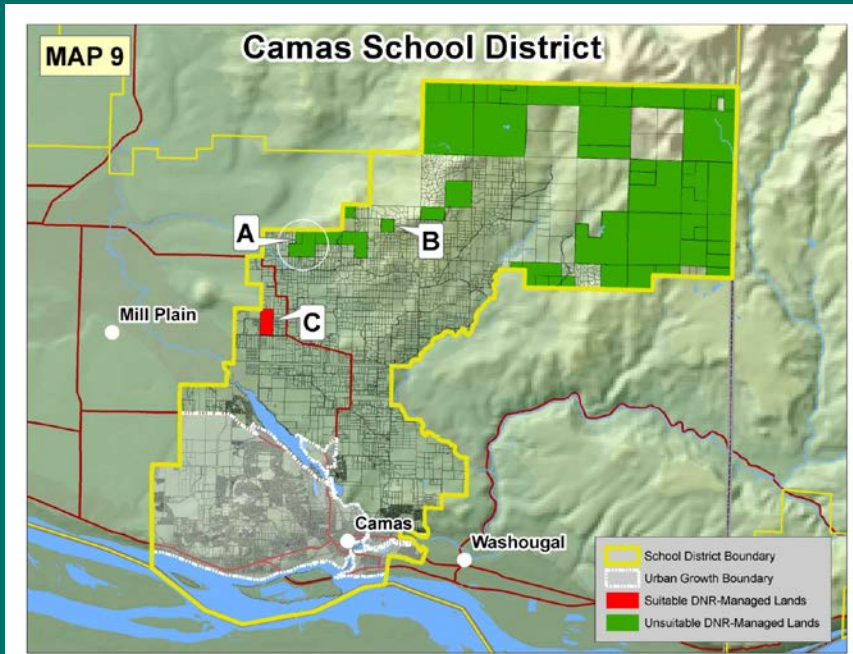


Located in
Clark County

Transfer to the
Camas School
District

School District
Request – Also
in Legislative
Study

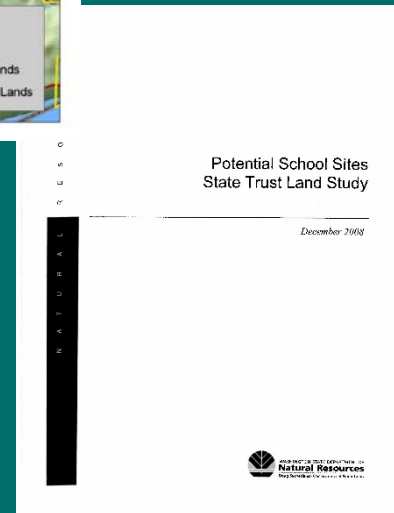
Camas 80 Transfer



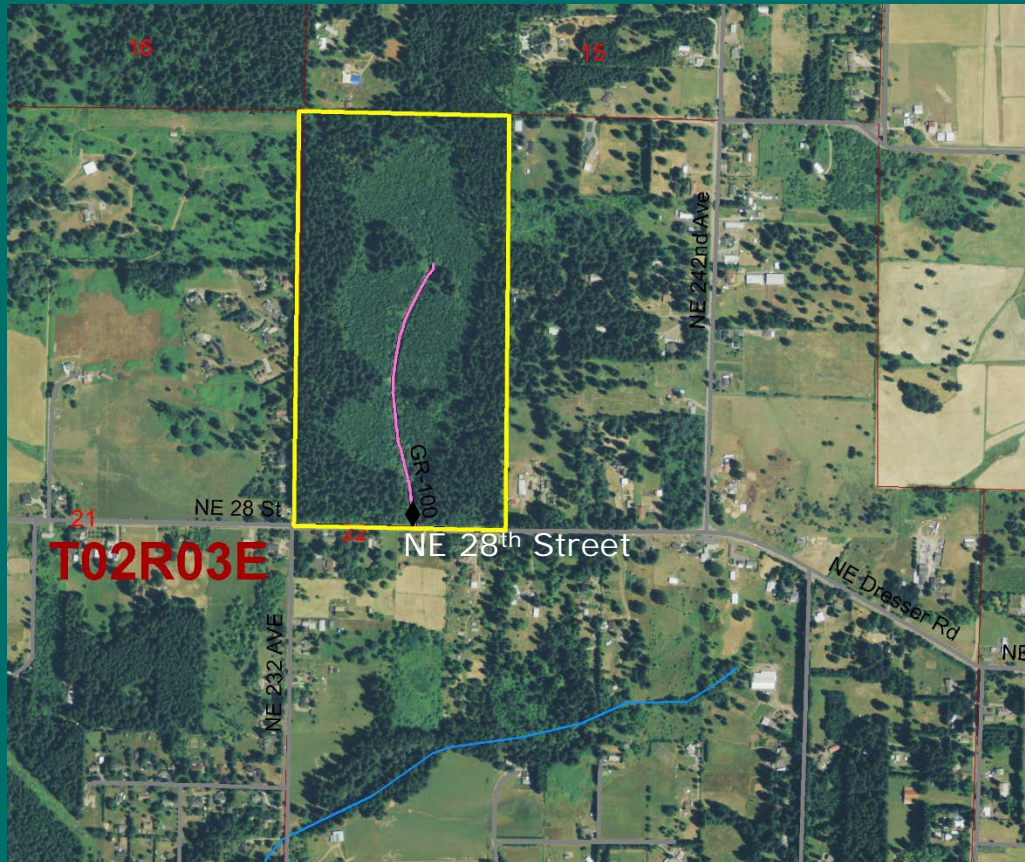
Parcel C –
Desired Parcel

2009 Leg. Study

Potential School
Sites – State
Trust Land Study



Camas 80 Transfer



Common School
Trust – S.22

County Road –
NE 28th

Gently Sloping

Harvested in
2000

Camas 80 Transfer



Road Frontage
NE 28th



Young Stands –
15 year old

Second Growth -
Timber

Camas 80 Transfer

Appraised Value of Transfer Property

	Land Value	Timber Value	Total Value
Camas 80	\$ 520,000	\$ 610,000	\$ 1,130,000
81.05 acres	\$ 6,416/acre	\$ 7,526/acre	\$13,942/acre
Total	\$ 520,000	\$ 610,000	\$1,130,000

Distribution of Funds

100% to Real Property Replacement Account

Camas 80 Transfer



DNR Photo



WASHINGTON STATE DEPARTMENT OF
Natural Resources

Peter Goldmark - Commissioner of Public Lands