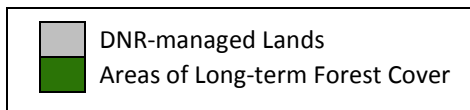
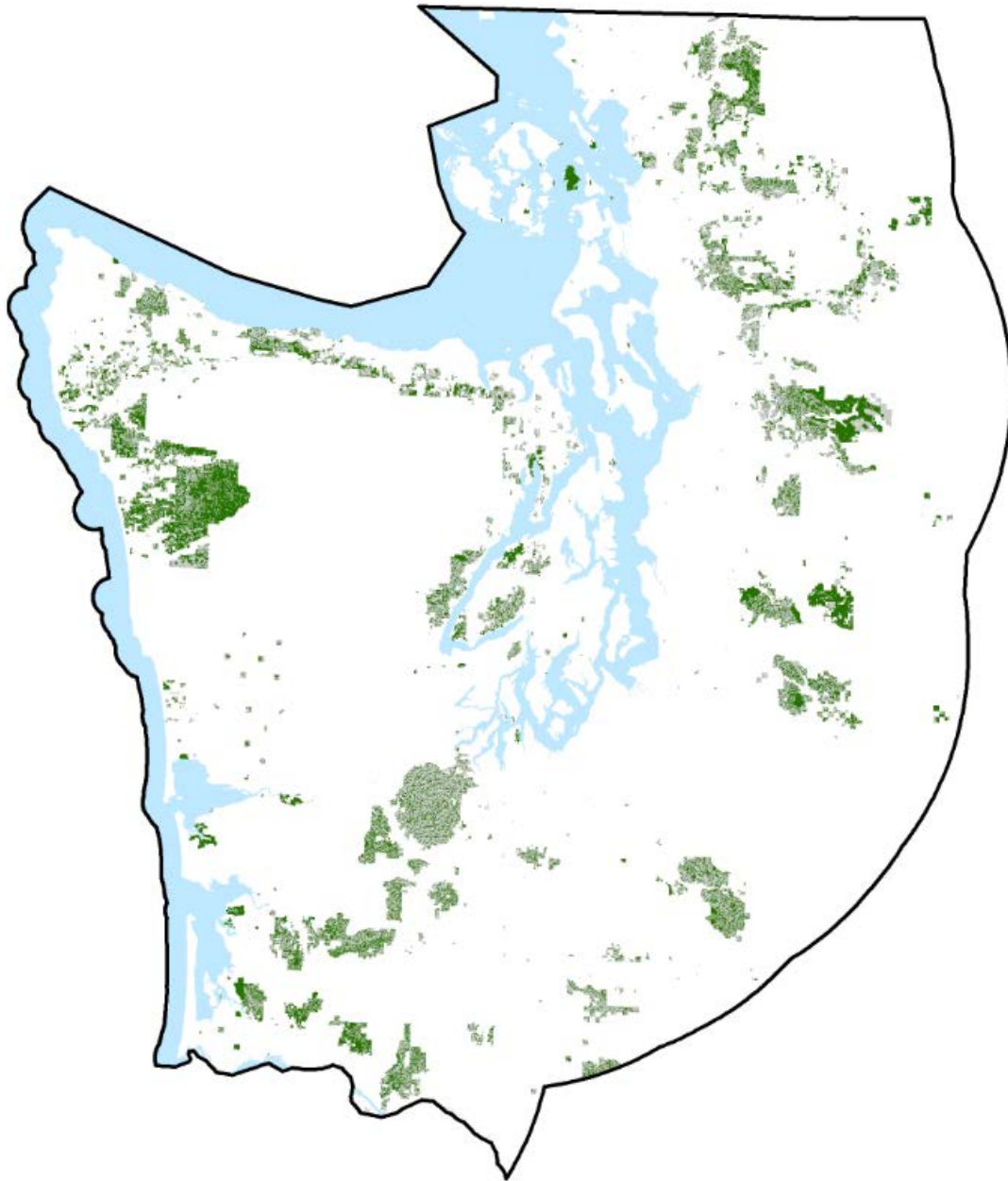




Marbled Murrelet Long-term Conservation Strategy for Forested State Trust Lands in Western Washington

Proposed Alternative A: No Action

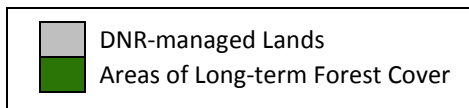
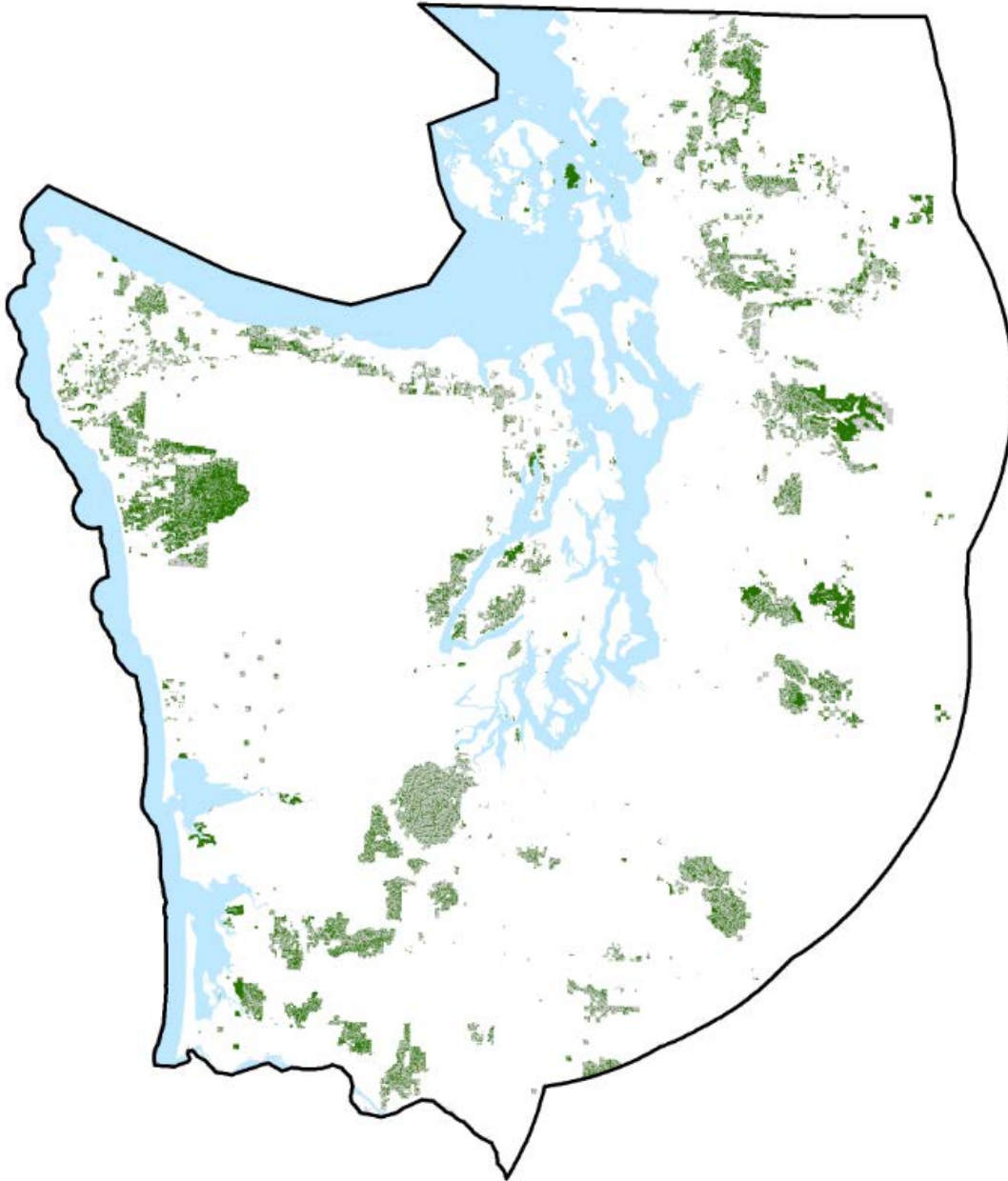




WASHINGTON STATE DEPARTMENT OF
Natural Resources
Peter Goldmark - Commissioner of Public Lands

Marbled Murrelet Long-term Conservation Strategy for Forested State Trust Lands in Western Washington

Proposed Alternative B

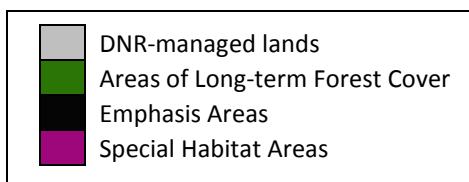
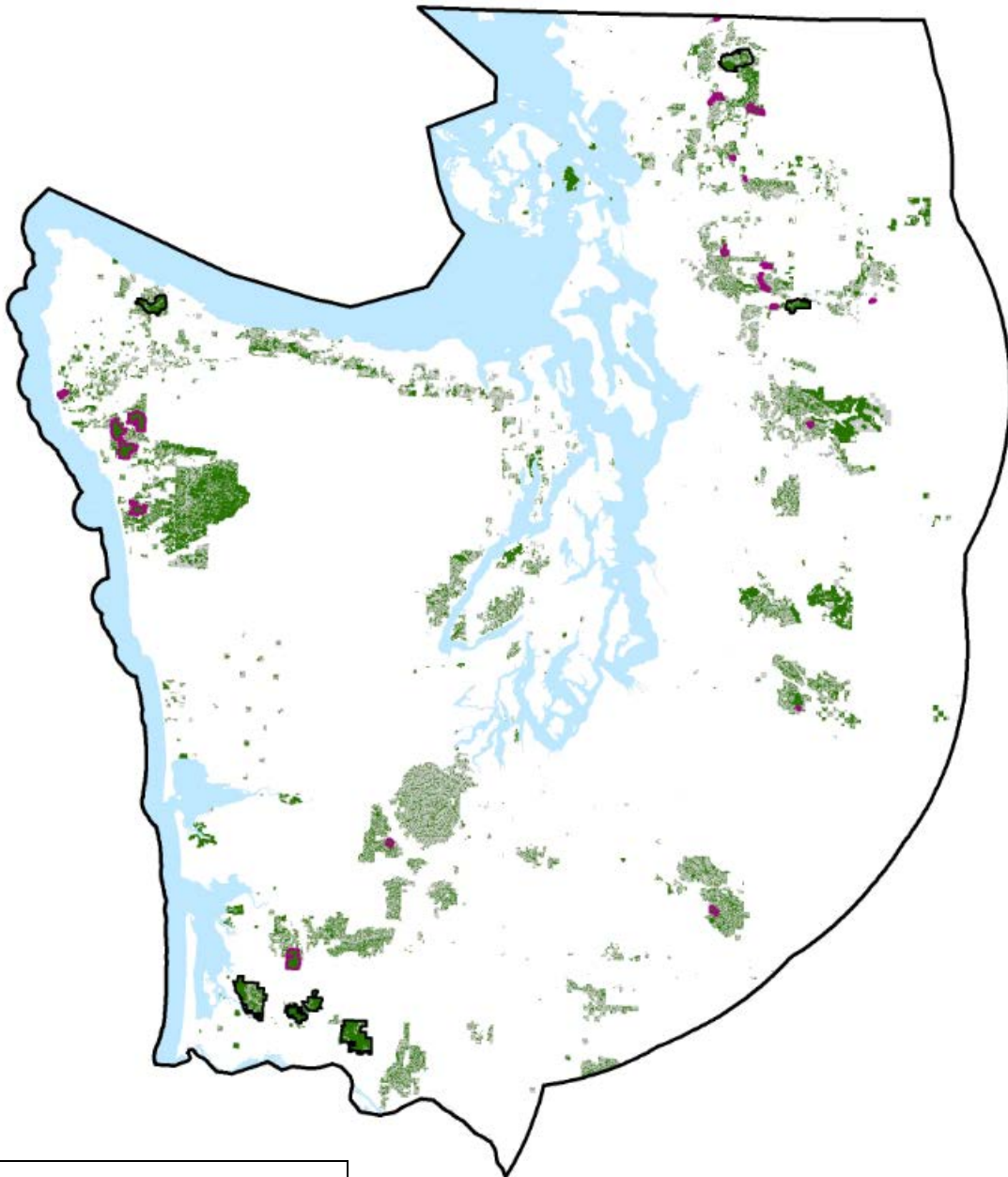




Marbled Murrelet Long-term Conservation Strategy

for Forested State Trust Lands in Western Washington

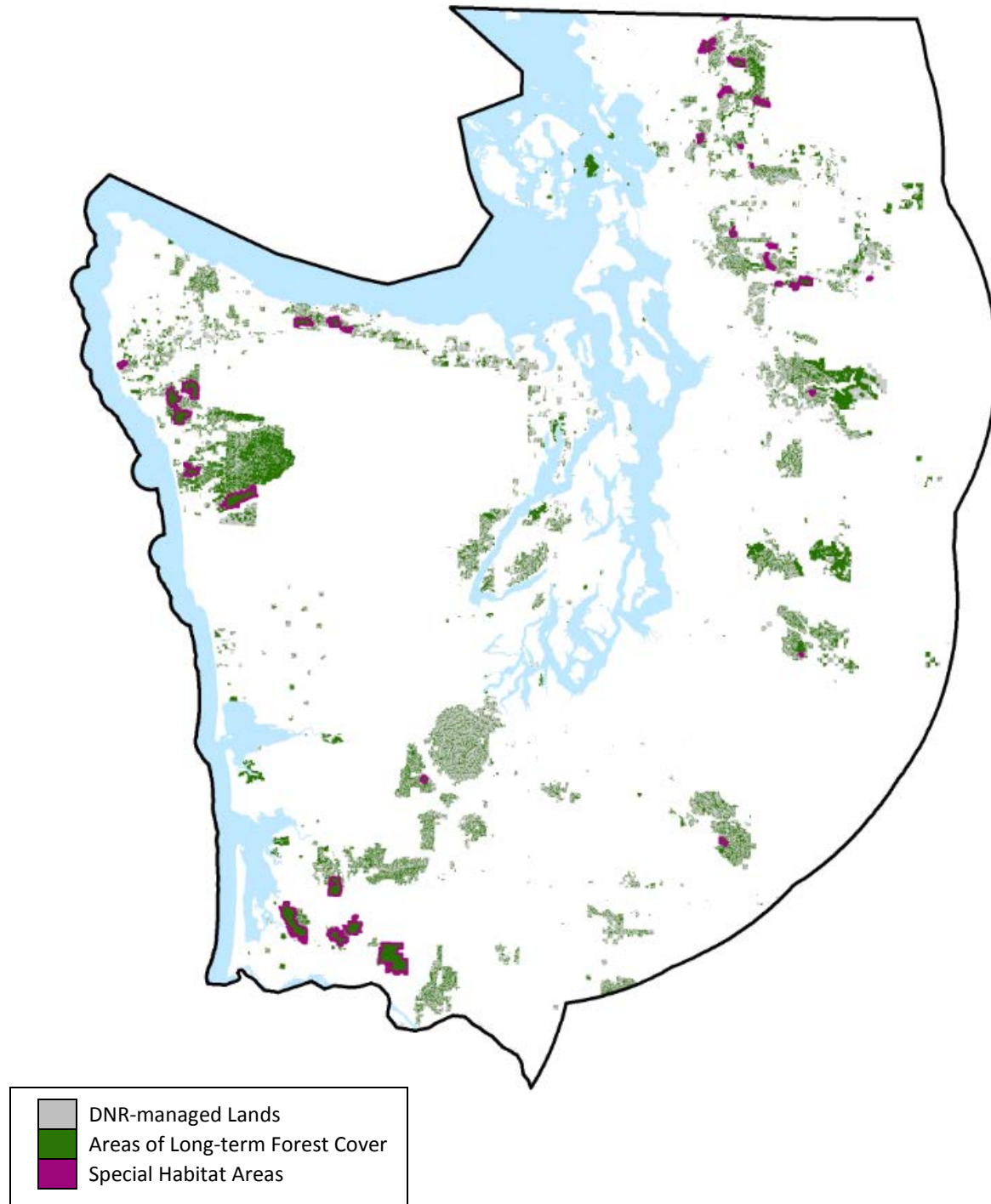
Proposed Alternative C





Marbled Murrelet Long-term Conservation Strategy for Forested State Trust Lands in Western Washington

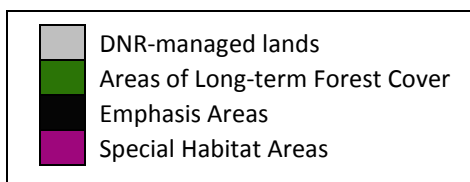
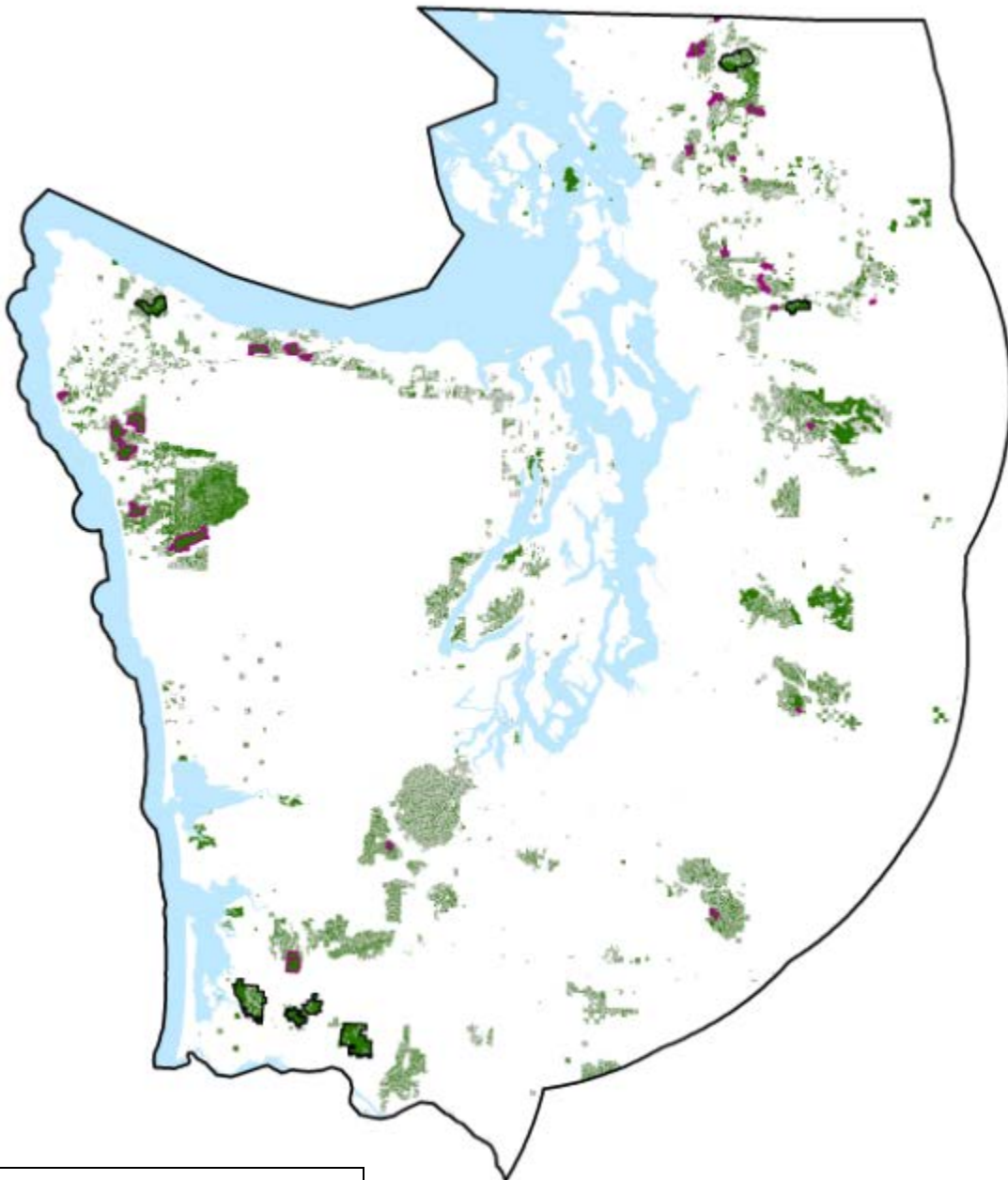
Proposed Alternative D





Marbled Murrelet Long-term Conservation Strategy for Forested State Trust Lands in Western Washington

Proposed Alternative E





Marbled Murrelet Long-term Conservation Strategy

for Forested State Trust Lands in Western Washington

Proposed Alternative F

